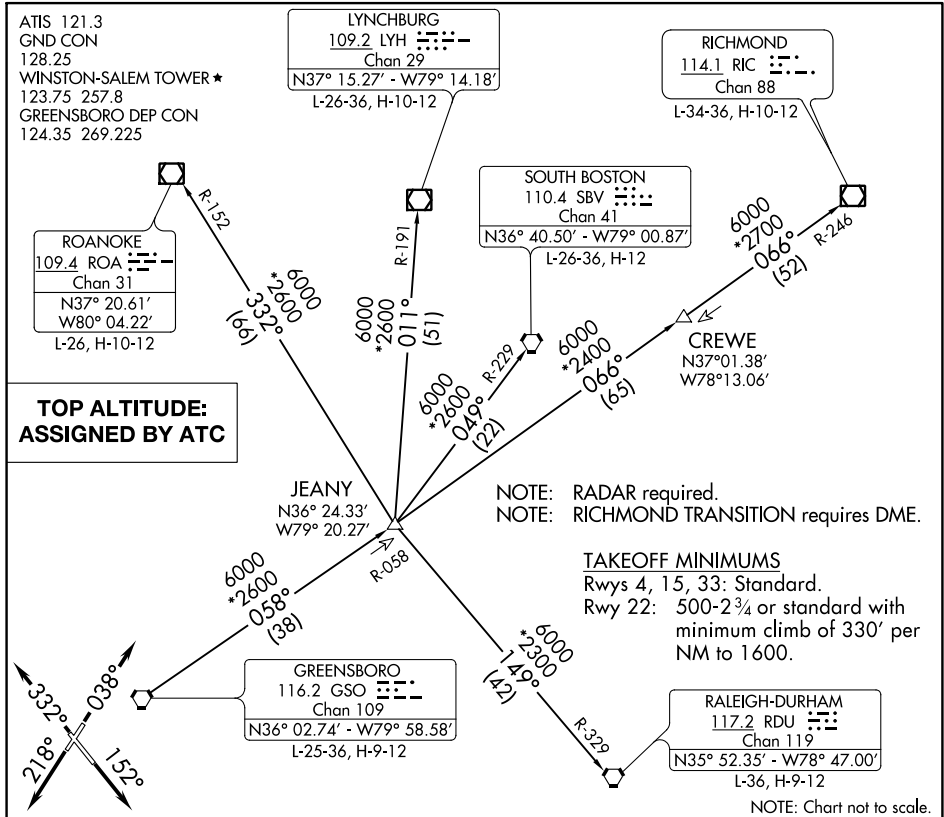


QUAKER SEVEN DEPARTURE



SE-2, 22 APR 2021 to 20 MAY 2021

SE-2, 22 APR 2021 to 20 MAY 2021

DEPARTURE ROUTE DESCRIPTION

- TAKEOFF RUNWAY 4: Climb heading 038°, thence. . .
- TAKEOFF RUNWAY 15: Climb heading 152°, thence. . .
- TAKEOFF RUNWAY 22: Climb heading 218°, thence. . .
- TAKEOFF RUNWAY 33: Climb heading 332°, thence. . .
- . . . maintain altitude assigned by ATC. RADAR vectors will be provided to intercept assigned radial associated with the issued transition, or if no transition assigned, RADAR vectors will be provided to the appropriate fix. Expect requested altitude/flight level 10 minutes after departure.
- LYNCHBURG TRANSITION (QUAK7.LYH): From over GSO VORTAC on GSO R-058 to JEANY INT then on LYH R-191 to LYH VOR/DME.
- RALEIGH/DURHAM TRANSITION (QUAK7.RDU): From over GSO VORTAC on GSO R-058 to JEANY INT then on RDU R-329 to RDU VORTAC.
- RICHMOND TRANSITION (QUAK7.RIC): From over GSO VORTAC on GSO R-058 to JEANY INT then on GSO R-058 and RIC R-246 to RIC VOR/DME.
- ROANOKE TRANSITION (QUAK7.ROA): From over GSO VORTAC on GSO R-058 to JEANY INT then on ROA R-152 to ROA VOR/DME.
- SOUTH BOSTON TRANSITION (QUAK7.SBV): From over GSO VORTAC on GSO R-058 to JEANY INT then on SBV R-229 to SBV VORTAC.

TRIAD NINE DEPARTURE

AL-463 (FAA)

SMITH REYNOLDS (INT)
WINSTON-SALEM, NORTH CAROLINA

ATIS
121.3
GND CON
128.25
WINSTON-SALEM TOWER ★
123.75 (CTAF) 257.8
GREENSBORO DEP CON
124.35 269.225

YADKI
N36°22.89'
W80°55.15'

BOTTM
N36°34.09'
W80°46.82'

**TOP ALTITUDE:
ASSIGNED BY ATC**

GREENSBORO
116.2 GSO
Chan 109
N36°02.74'-W79°58.58'

BARRETT'S MOUNTAIN
110.8 BZM
Chan 45
N35°52.13'-W81°14.43'

BOLTT
N35°37.48'
W80°11.07'

CARWN
N35°32.63'
W80°25.73'

LIBERTY
113.0 LIB
Chan 77
N35°48.70'-W79°36.76'

CLINE
N34°55.45'
W80°08.61'
L-25-36

NOTE: RADAR and DME required.

TAKEOFF MINIMUMS

Rwys 4, 15, 33: Standard.

Rwy 22: 500-2¾ or standard with minimum climb of 330' per NM to 1600.

NOTE: Chart not to scale.

DEPARTURE ROUTE DESCRIPTION

TAKEOFF RUNWAY 4: Climb heading 038°, thence . . .

TAKEOFF RUNWAY 15: Climb heading 152°, thence . . .

TAKEOFF RUNWAY 22: Climb heading 218°, thence . . .

TAKEOFF RUNWAY 33: Climb heading 332°, thence . . .

. . . maintain altitude assigned by ATC. Expect vector to intercept assigned radial associated with the issued transition. Proceed via the depicted radial to the transition fix, thence as filed. If no transition assigned, expect vector to the appropriate fix. Expect requested altitude/flight level ten (10) minutes after departure.

BOTTM TRANSITION (TRI9.BOTTM): Expect vector to intercept GSO R-312 to BOTTM.

CARWN TRANSITION (TRI9.CARWN): Expect vector to intercept GSO R-205 to BOLTT, then on LIB R-251 to CARWN.

CLINE TRANSITION (TRI9.CLINE): Expect vector to intercept GSO R-190 to CLINE.

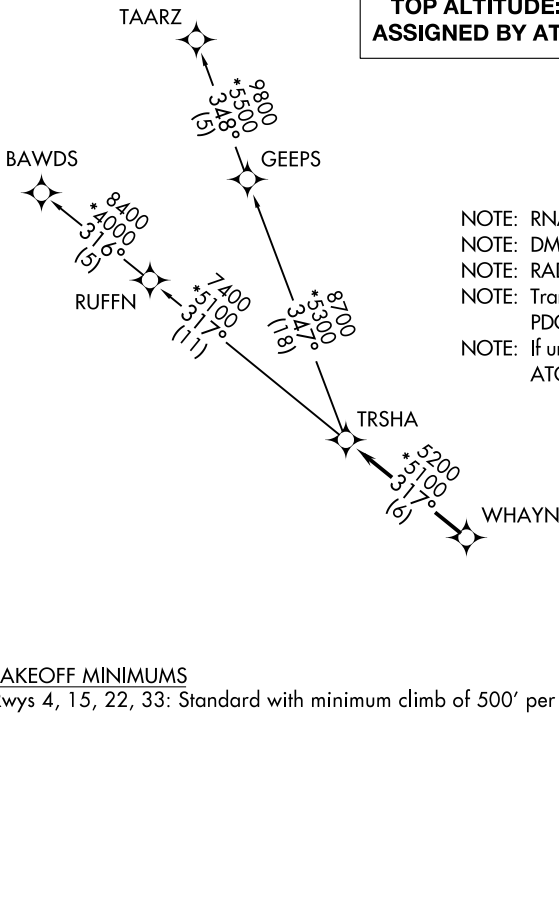
YADKI TRANSITION (TRI9.YADKI): Expect vector to intercept GSO R-297 to YADKI.

TRSHA ONE DEPARTURE (RNAV)

WINSTON-SALEM, NORTH CAROLINA

**TOP ALTITUDE:
ASSIGNED BY ATC**

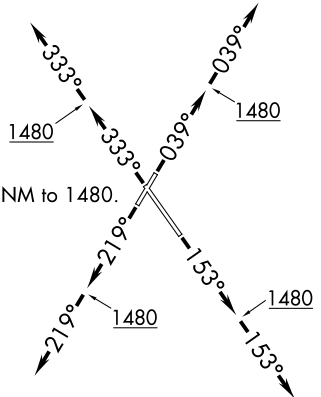
ATIS 121.3
GND CON 128.25
WINSTON-SALEM TOWER ★ 123.75 257.8
GREENSBORO DEP CON 124.35 269.225



- NOTE: RNAV 1.
- NOTE: DME/DME/IRU or GPS required.
- NOTE: RADAR required.
- NOTE: Transponder code will be issued via PDC or Greensboro CLNC DEL.
- NOTE: If unable to accept climb rates, advise ATC on initial contact.

TAKEOFF MINIMUMS

Rwys 4, 15, 22, 33: Standard with minimum climb of 500' per NM to 1480.



NOTE: Chart not to scale.

DEPARTURE ROUTE DESCRIPTION

- TAKEOFF RWY 4:** Climb heading 039° to 1480, then on heading 039°. Thence. . . .
- TAKEOFF RWY 15:** Climb heading 153° to 1480, then on heading 153°. Thence. . . .
- TAKEOFF RWY 22:** Climb heading 219° to 1480, then on heading 219°. Thence. . . .
- TAKEOFF RWY 33:** Climb heading 333° to 1480, then on heading 333°. Thence. . . .

. . . . expect RADAR vectors to WHAYN, then on track 317° to TRSHA, then on assigned transition. Maintain altitude assigned by ATC. Expect clearance to filed altitude within ten (10) minutes after departure.

BAWDS TRANSITION (TRSHA1.BAWDS)

TAARZ TRANSITION (TRSHA1.TAARZ)

TRSHA ONE DEPARTURE (RNAV)

(TRSHA1.TRSHA) 05JAN17

WINSTON-SALEM, NORTH CAROLINA
SMITH REYNOLDS (INT)

SE-2, 22 APR 2021 to 20 MAY 2021

SE-2, 22 APR 2021 to 20 MAY 2021