

WAAS CH 63213 W18A	APP CRS 183°	Rwy Idg 4550 TDZE 36 Apt Elev 37
--	------------------------	---

RNAV (GPS) RWY 18

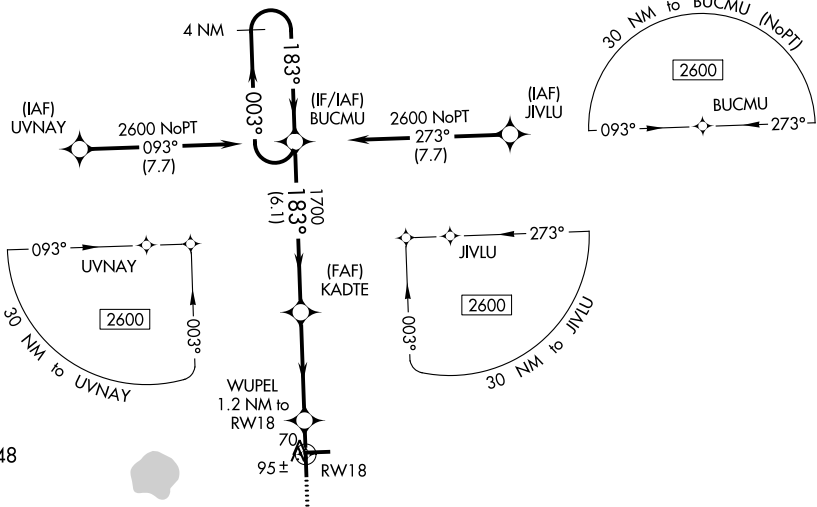
IMMOKALEE RGNL (IMM)

RNP APCH.

▼ For uncompensated Baro-VNAV systems, LNAV/VNAV NA below 0°C (32°F) or above 54°C (130°F).

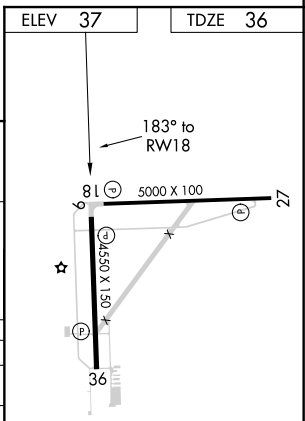
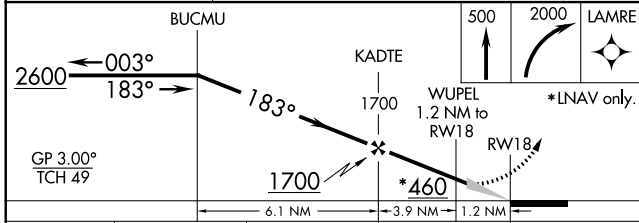
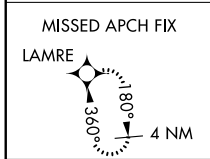
MISSED APPROACH: Climb to 500 then climbing right turn to 2000 direct LAMRE and hold.

AWOS-3 118.525	FORT MYERS APP CON ★ 124.125 371.85	CTAF 122.9
--------------------------	---	----------------------



▲ 1248

▲ 609



CATEGORY	A	B	C	D
LPV DA		286-1	250 (300-1)	
LNAV/VNAV DA		286-1	250 (300-1)	
LNAV MDA		360-1	324 (400-1)	
C CIRCLING	500-1 463 (500-1)	640-1 603 (700-1)	640-1 ¼ 603 (700-1¼)	680-2 643 (700-2)

REIL Rwys 9, 18, 27, and 36
MIRL Rwys 9-27 and 18-36

SE-3, 11 AUG 2022 to 08 SEP 2022

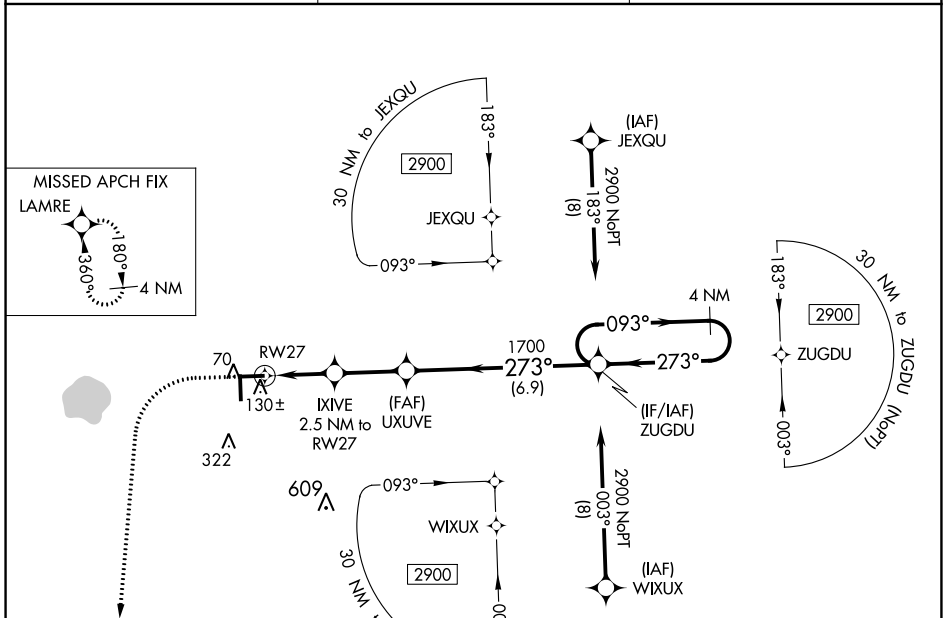
SE-3, 11 AUG 2022 to 08 SEP 2022

WAAS CH 69613 W27A	APP CRS 273°	Rwy Idg TDZE Apt Elev	5000 35 37
---------------------------------	------------------------	-----------------------------	---------------------------------------

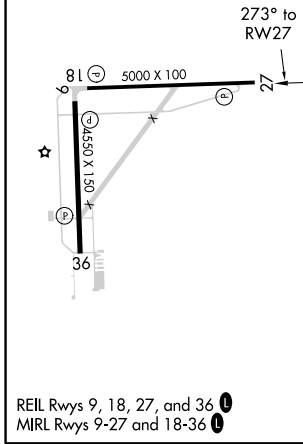
RNAV (GPS) RWY 27

IMMOKALEE RGNL (IMM)

RNP APCH.		MISSED APPROACH: Climb to 500 then climbing left turn to 2000 direct LAMRE and hold.
For uncompensated Baro-VNAV systems, LNAV/VNAV NA below 0°C (32°F) or above 54°C (130°F).		
AWOS-3 118.525	FORT MYERS APP CON ★ 124.125 371.85	CTAF 122.9



ELEV 37	TDZE 35
---------	---------



	500	2000	LAMRE
	*LNAV only.		
	IXIVE 2.5 NM to RW27	UXUVE 1700	ZUGDU 4 NM Holding Pattern
	RW27	273°	093°
	0.9 NM	1.6 NM	2.6 NM
	0.9 NM	1.6 NM	6.9 NM
	880	1700	2900
	GP 3.00° TCH 53		
CATEGORY	A	B	C
LPV DA		285-1	250 (300-1)
LNAV/VNAV DA		311-1	276 (300-1)
LNAV MDA		380-1	345 (400-1)
CIRCLING	500-1 463 (500-1)	640-1 603 (700-1)	640-1 3/4 603 (700-1 3/4)
			680-2 643 (700-2)

SE-3, 11 AUG 2022 to 08 SEP 2022

SE-3, 11 AUG 2022 to 08 SEP 2022

WAAS CH 73013 W36A	APP CRS 003°	Rwy Idg 4550 TDZE 34 Apt Elev 37
--	------------------------	---

RNAV (GPS) RWY 36

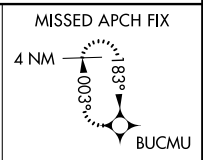
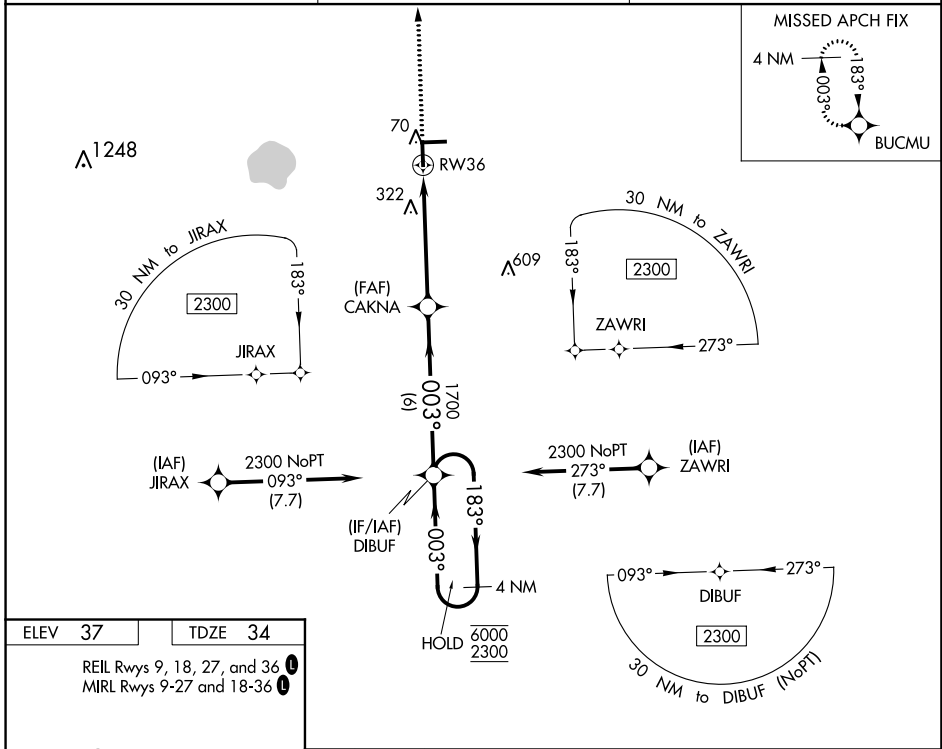
IMMOKALEE RGNL (IMIM)

RNP APCH-GPS.

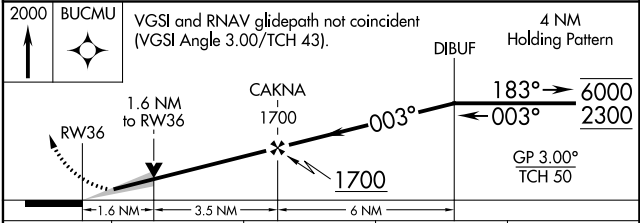
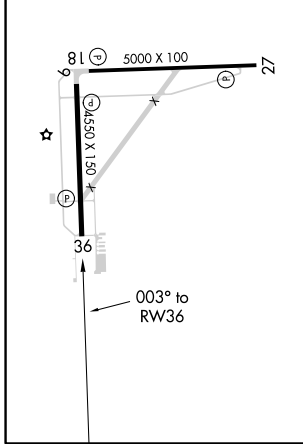
▽ For uncompensated Baro-VNAV systems, LNAV/VNAV
▲ NA below 0°C or above 54°C.

MISSED APPROACH: Climb to 2000 direct BUCMU and hold.

AWOS-3 118.525	FORT MYERS APP CON ★ 124.125 371.85	CTAF 122.9 ①
--------------------------	---	-------------------------------



ELEV 37	TDZE 34
REIL Rwy 9, 18, 27, and 36 ①	
MIRL Rwy 9-27 and 18-36 ②	



CATEGORY	A	B	C	D
LPV DA		284-1	250 (300-1)	
LNAV/VNAV DA		303-1	269 (300-1)	
LNAV MDA	580-1	546 (600-1)	580-1½	546 (600-1½)
① CIRCLING	580-1 543 (600-1)	640-1 603 (700-1)	640-1¾ 603 (700-1¾)	680-2 643 (700-2)

SE-3, 11 AUG 2022 to 08 SEP 2022

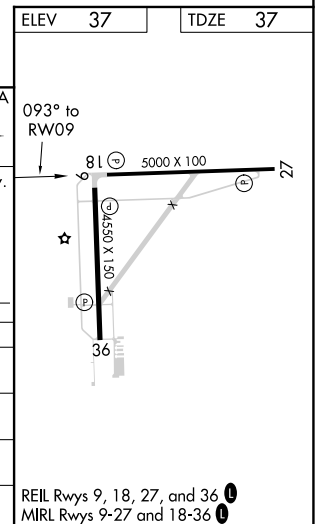
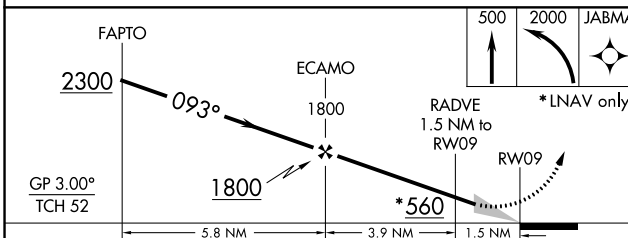
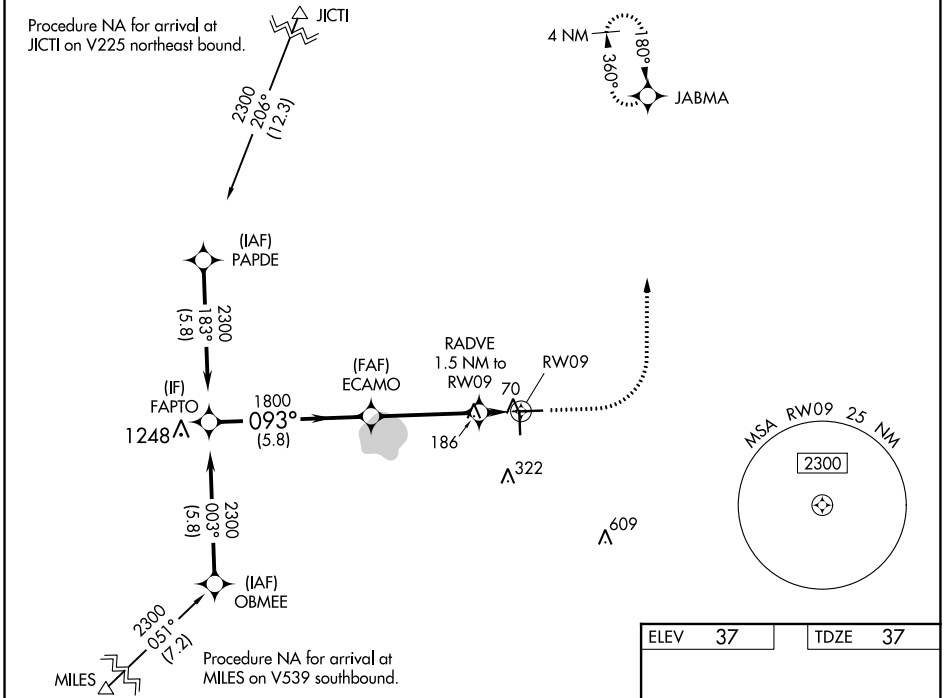
SE-3, 11 AUG 2022 to 08 SEP 2022

WAAS CH 99713 W09A	APP CRS 093°	Rwy Idg TDZE Apt Elev	5000 37 37
--	------------------------	-----------------------------	---------------------------------------

RNAV (GPS) RWY 9

IMMOKALEE RGNL (IMM)

RNP APCH.		MISSED APPROACH: Climb to 500 then climbing left turn to 2000 direct JABMA and hold.
▼ For uncompensated Baro-VNAV systems, LNAV/VNAV NA below 0°C (32°F) or above 54°C (130°F).		
AWOS-3 118.525	FORT MYERS APP CON ★ 124.125 371.85	CTAF 122.9 0



CATEGORY	A	B	C	D
LPV DA		287-1	250 (300-1)	
LNAV/VNAV DA		287-1	250 (300-1)	
LNAV MDA	440-1	403 (500-1)	440-1½	403 (500-1½)
CIRCLING	500-1 463 (500-1)	640-1 603 (700-1)	640-1¾ 603 (700-1¾)	680-2 643 (700-2)

SE-3, 11 AUG 2022 to 08 SEP 2022

SE-3, 11 AUG 2022 to 08 SEP 2022