

WAAS CH 72912 W 24A	APP CRS 246°	Rwy Idg TDZE Apt Elev	3801 635 635
---	------------------------	-----------------------------	---

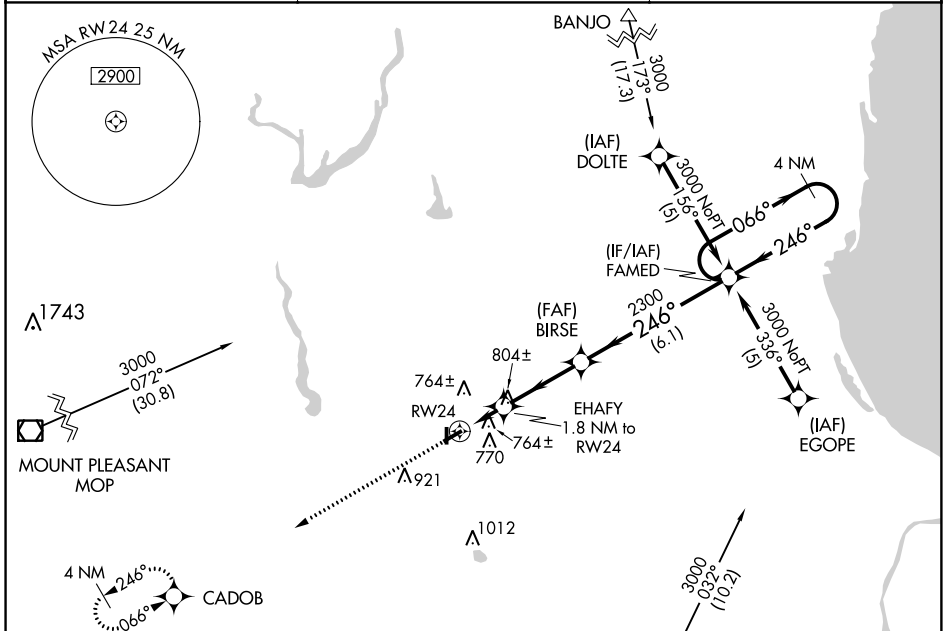
RNAV (GPS) RWY 24

JACK BARSTOW (IKW)

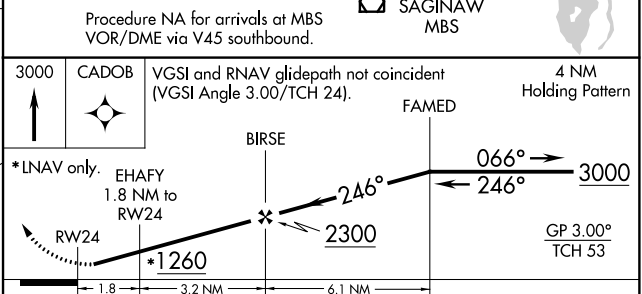
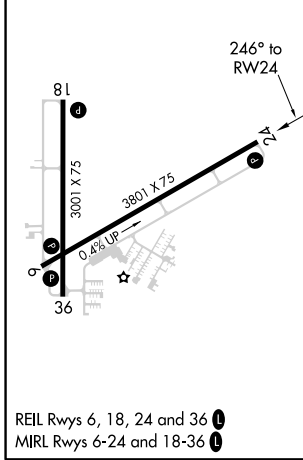
⚠ Baro-VNAV NA when using MBS Intl altimeter setting. For uncompensated Baro-VNAV systems, LNAV/VNAV NA below -16°C (4°F) or above 54°C (130°F). DME/DME RNP-0.3 NA. Rwy 24 helicopter visibility reduction below 3/4 SM NA. When local altimeter setting not received, use MBS Intl altimeter setting and increase all DA 31 feet and all MDA 40 feet and all LPV visibility 1/4 mile. Circling Rwy 18, 36 NA at night.

MISSED APPROACH:
Climb to 3000 direct CADOB and hold.

AWOS-3 119.525	SAGINAW APP CON ★ 126.45 235.625	UNICOM 122.8 (CTAF) ①
--------------------------	--	---------------------------------



ELEV 635	TDZE 635
-----------------	-----------------



CATEGORY	A	B	C	D
LPV DA	1021-1¼	386 (400-1¼)		NA
LNAV/VNAV DA	1068-1½	433 (500-1½)		NA
LNAV MDA	1060-1	425 (500-1)	1060-1¼ 425 (500-1¼)	NA
CIRCLING	1120-1	485 (500-1)	1120-1½ 485 (500-1½)	NA

EC-1, 01 FEB 2018 to 01 MAR 2018

EC-1, 01 FEB 2018 to 01 MAR 2018

APP CRS	Rwy Idg	3801
066°	TDZE	628
	Apt Elev	635

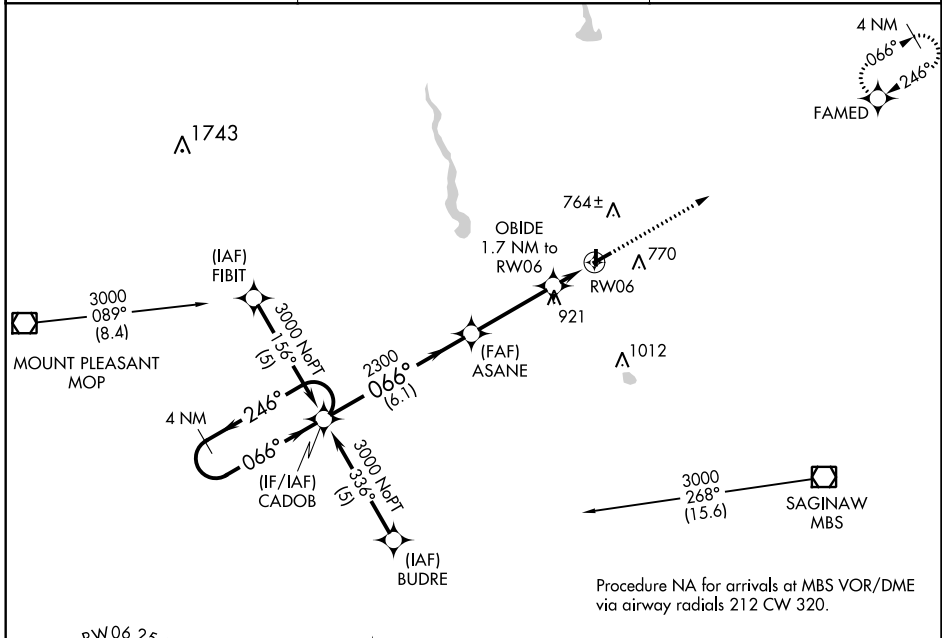
RNAV (GPS) RWY 6

JACK BARSTOW (IKW)

▽ DME/DME RNP-0.3 NA. Rwy 24 helicopter visibility reduction below ¼ SM NA.
▲ When local altimeter setting not received, use MBS Intl altimeter setting and increase all MDA 40 feet and LNAV Cat C visibility ¼ mile. Circling Rwy 18, 36 NA at night.

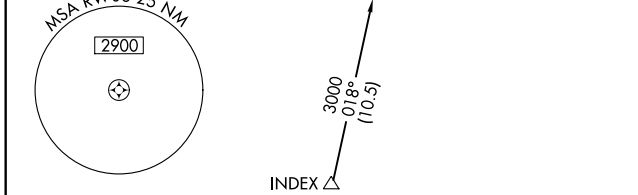
MISSED APPROACH: Climb to 3000 direct FAMED and hold.

AWOS-3 119.525	SAGINAW APP CON ★ 126.45 235.625	UNICOM 122.8 (CTAF) 0
--------------------------	--	---------------------------------

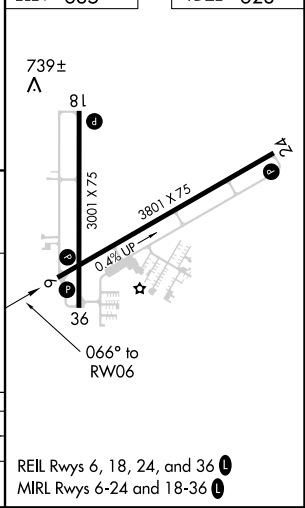
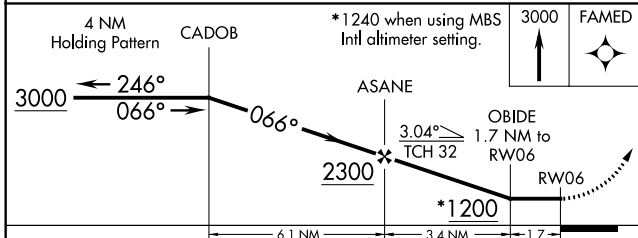


EC-1, 01 FEB 2018 to 01 MAR 2018

EC-1, 01 FEB 2018 to 01 MAR 2018



Procedure NA for arrivals at MBS VOR/DME via airway radials 212 CW 320.



CATEGORY	A	B	C	D
LNAV MDA	1000-1 372 (400-1)			NA
CIRCLING	1120-1	485 (500-1)	1120-1½ 485 (500-1½)	NA

REIL Rwy 6, 18, 24, and 36 0
 MIRL Rwy 6-24 and 18-36 0

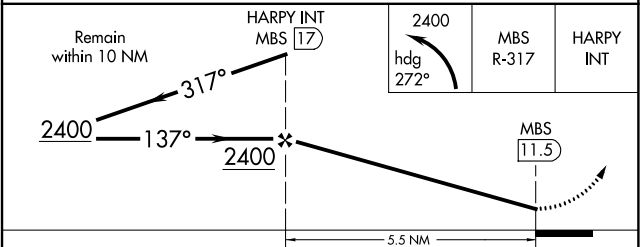
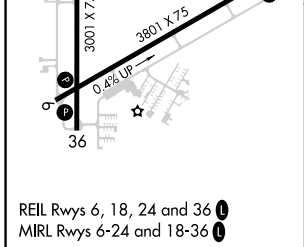
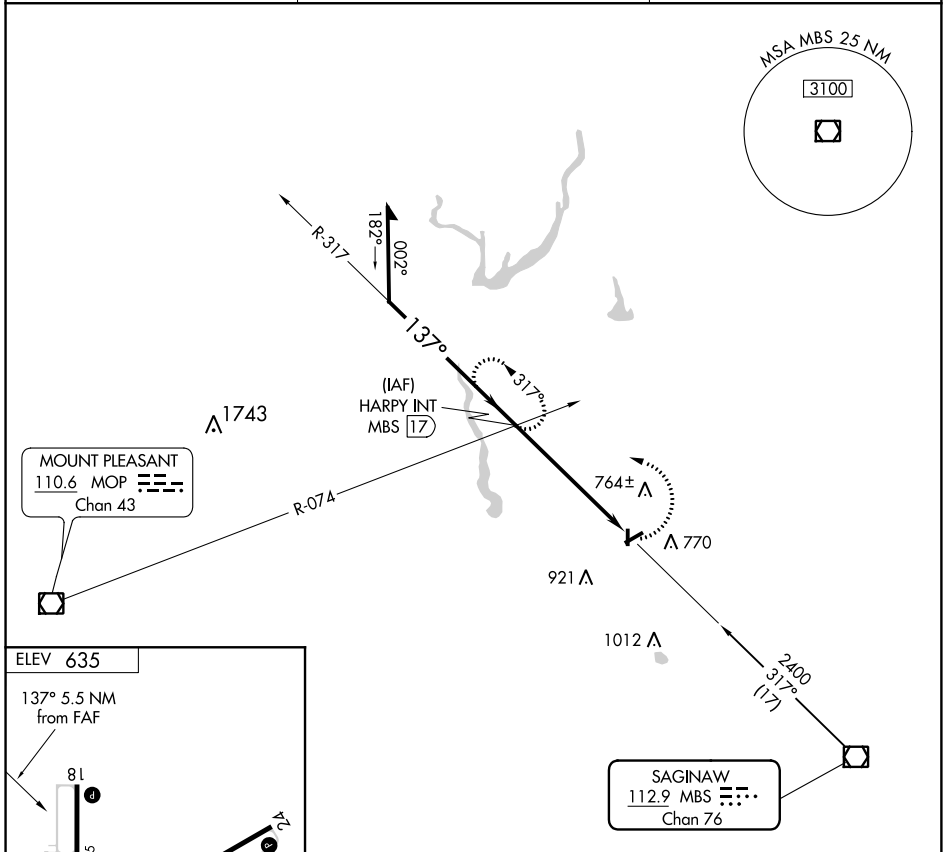
VOR/DME MBS 112.9 Chan 76	APP CRS 137°	Rwy Idg TDZE Apt Elev 635	N/A N/A
--	------------------------	--	--------------------------

VOR-A
JACK BARSTOW (IKW)

⚠ When local altimeter setting not received, use MBS Intl altimeter setting and increase all MDA 40 feet. Circling Rwy 18, 36 NA at night.
⚠ Rwy 18, 36 helicopter visibility reduction below 1 SM NA.

MISSED APPROACH: Climbing left turn to 2400 via heading 272° and MBS VOR/DME R-317 to HARPY INT/17 DME and hold.

AWOS-3 119.525	SAGINAW APP CON ★ 126.45 235.625	UNICOM 122.8 (CTAF) 0
--------------------------	--	---------------------------------



FAF to MAP 5.5 NM							
Knots	60	90	120	150	180		
Min:Sec	5:30	3:40	2:45	2:12	1:50		
CATEGORY	A		B		C	D	
CIRCLING	1140-1		505 (600-1)		1140-1½	505 (600-1½)	NA