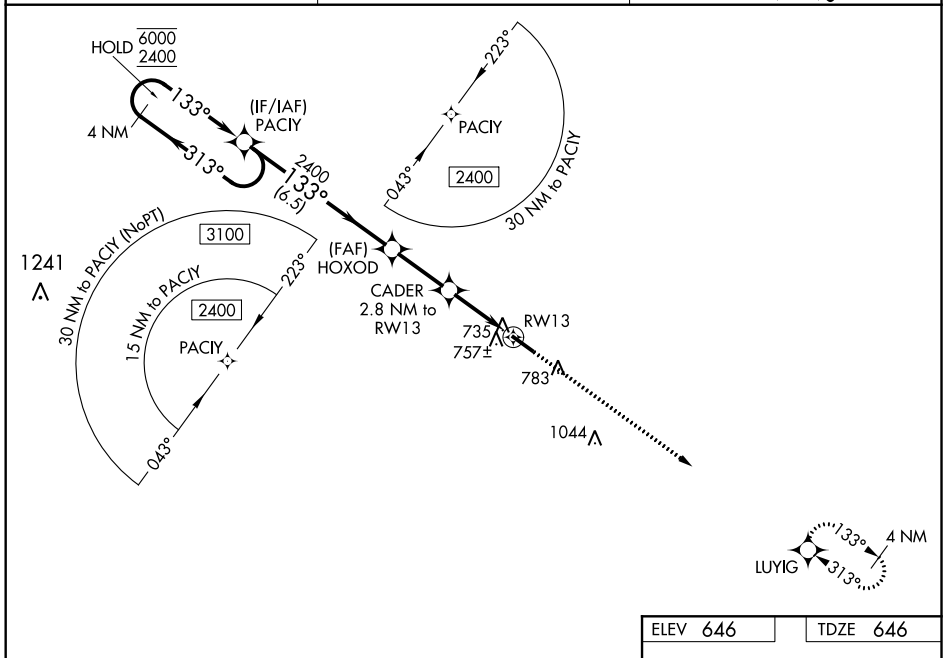


WAAS CH <b>62809</b> <b>W13A</b>	APP CRS <b>133°</b>	Rwy Idg <b>5020</b> TDZE <b>646</b> Apt Elev <b>646</b>
--	------------------------	---

# RNAV (GPS) RWY 13

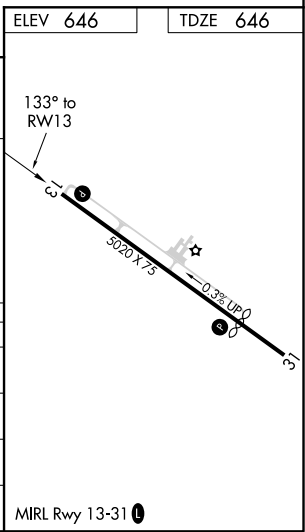
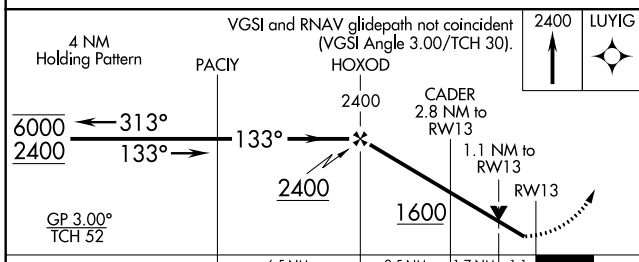
WASHINGTON/WILKES COUNTY (IIY)

RNP APCH-GPS.		MISSED APPROACH: Climb to 2400 direct LUYIG and hold.
AWOS-3 <b>118.375</b>	AUGUSTA APP CON★ <b>126.8 270.3</b>	UNICOM <b>122.7 (CTAF) 0</b>



SE-4, 19 MAY 2022 to 16 JUN 2022

SE-4, 19 MAY 2022 to 16 JUN 2022



CATEGORY	A	B	C	D
LPV DA	958-7/8	312 (400-7/8)		NA
RNAV/VNAV DA	907-7/8	261 (300-7/8)		NA
RNAV MDA	1020-1	374 (400-1)		NA
<b>C</b> CIRCLING	1080-1 434 (500-1)	1100-1 454 (500-1)	1100-1½ 454 (500-1½)	NA

MIRL Rwy 13-31 0

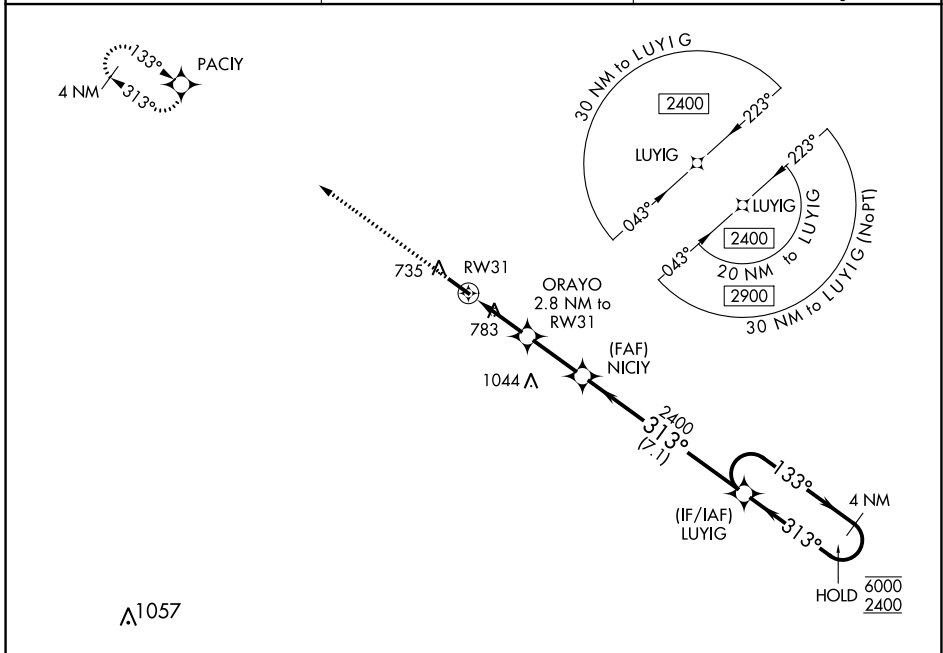
WAAS CH <b>45609</b> <b>W31A</b>	APP CRS <b>313°</b>	Rwy Idg <b>4020</b> TDZE <b>640</b> Apt Elev <b>646</b>
--	------------------------	---

# RNAV (GPS) RWY 31

WASHINGTON/WILKES COUNTY (IIY)

RNP APCH - GPS.	<p>▼ Rwy 31 helicopter visibility reduction below 3/4 SM NA. ▲ For uncompensated Baro-VNAV systems, LNAV/VNAV NA below -16°C or above 54°C.</p>	<p>MISSED APPROACH: Climb to 2400 direct PACIY and hold.</p>
-----------------	---	--

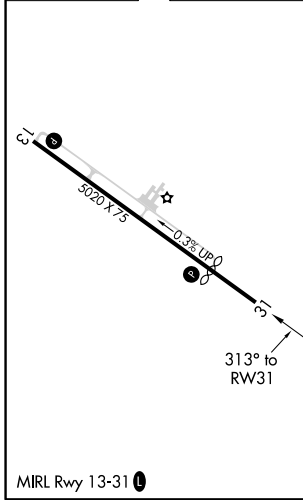
AWOS-3 <b>118.375</b>	AUGUSTA APP CON* <b>126.8 270.3</b>	UNICOM <b>122.7 (CTAF) 0</b>
--------------------------	--	---------------------------------



SE-4, 19 MAY 2022 to 16 JUN 2022

SE-4, 19 MAY 2022 to 16 JUN 2022

ELEV <b>646</b>	TDZE <b>640</b>
-----------------	-----------------



2400	PACIY	VGSI and RNAV glidepath not coincident (VGSI Angle 3.00/TCH 32).			
		ORAYO 2.8 NM to RW31	NICY 2400	LUYIG	4 NM Holding Pattern
		1.2 NM to RW31			133° → 6000 ← 313° 2400
		RW31			GP 3.10° TCH 55
		1.2 NM	1.6 NM	2.4 NM	7.1 NM
CATEGORY		A	B	C	D
LPV DA		891-3/4		251 (300-3/4)	NA
LNAV/VNAV DA		910-7/8		270 (300-7/8)	NA
LNAV MDA		1040-1	400 (400-1)	1040-1 1/8 400 (400-1 1/8)	NA
CIRCLING		1080-1 434 (500-1)	1100-1 454 (500-1)	1100-1 1/2 454 (500-1 1/2)	NA