

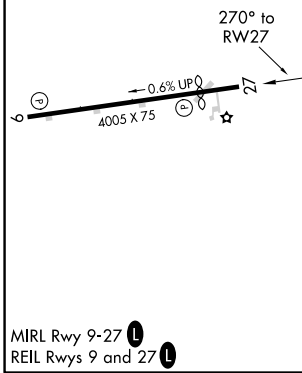
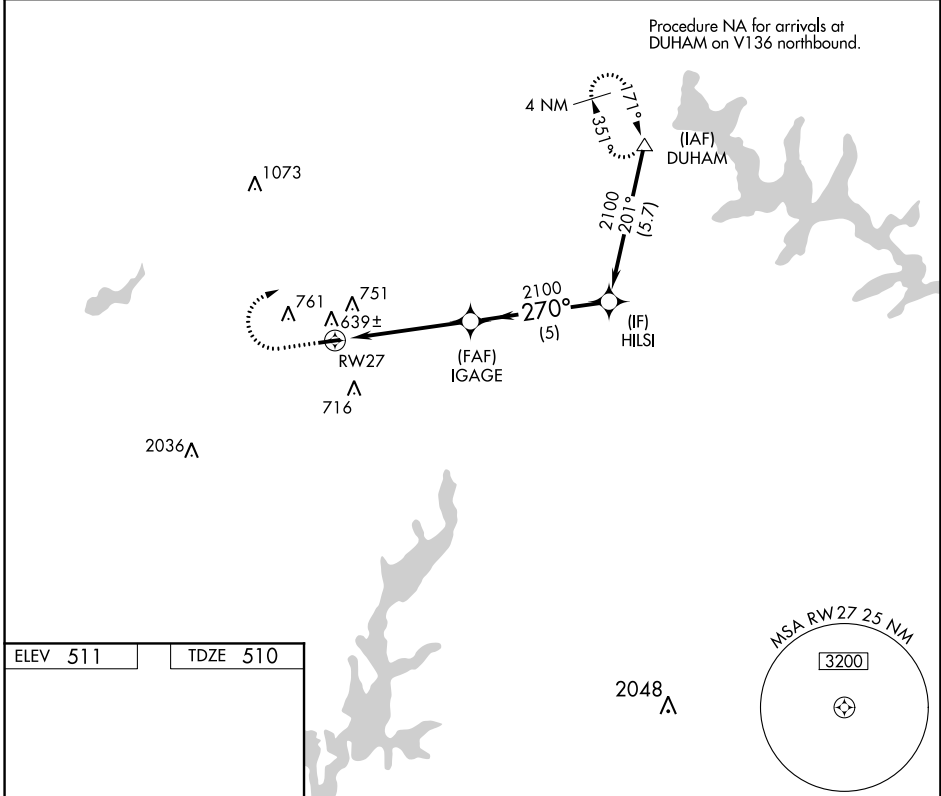
APP CRS <b>270°</b>	Rwy Idg <b>3275</b>
	TDZE <b>510</b>
	Apt Elev <b>511</b>

# RNAV (GPS) RWY 27

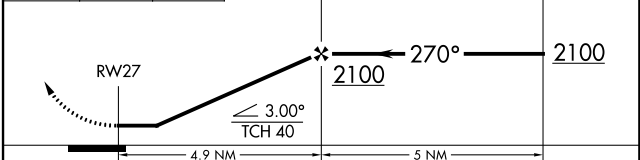
HORACE WILLIAMS (IGX)

**▼** DME/DME RNP-0.3 NA. Rwy 9, 27 helicopter visibility reduction below 1 SM NA. Procedure NA at night. **MISSED APPROACH:** Climb to 1300 then climbing right turn to 2200 direct DUHAM and hold.

ASOS <b>134.575</b>	RALEIGH APP CON <b>132.35 256.9</b>	CLNC DEL <b>126.5</b>	UNICOM <b>123.0 (CTAF) 0</b>
------------------------	--	--------------------------	---------------------------------



1300	2200	DUHAM	VGSI and descent angles not coincident (VGSI Angle 4.00/TCH 23).
------	------	-------	--



CATEGORY	A	B	C	D
LNAV MDA	920-1	410 (500-1)	920-1¼	410 (500-1¼)
CIRCLING	1100-1 589 (600-1)	1120-1 609 (700-1)	1120-1¾ 609 (700-1¾)	1120-2 609 (700-2)

SE-2: 07 DEC 2017 to 04 JAN 2018

SE-2: 07 DEC 2017 to 04 JAN 2018

APP CRS	Rwy Idg	<b>4005</b>
<b>090°</b>	TDZE	<b>511</b>
	Apt Elev	<b>511</b>

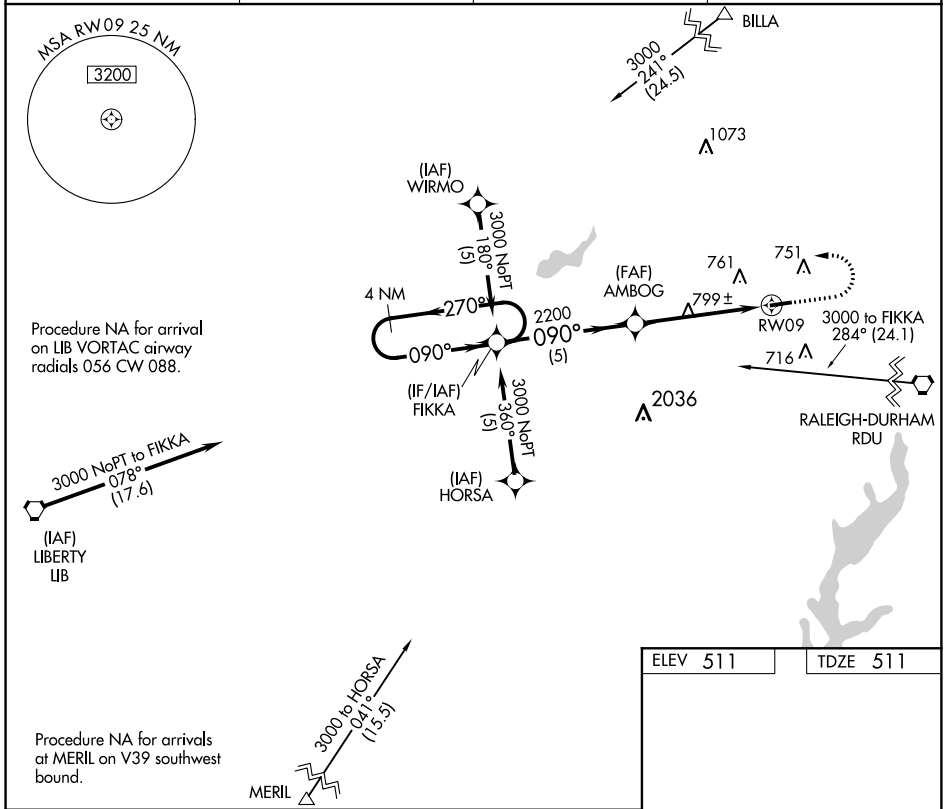
# RNAV (GPS) RWY 9

HORACE WILLIAMS (IGX)

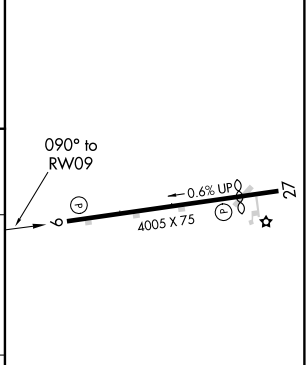
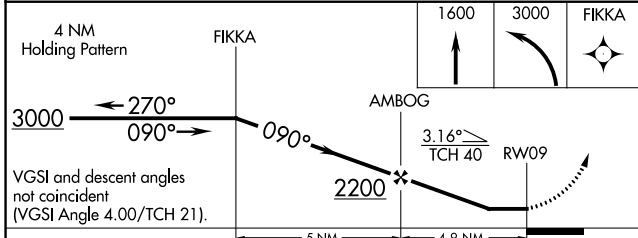
**▼** DME/DME RNP-0.3 NA. Rwy 9, 27 helicopter visibility reduction below 1 SM NA. Procedure NA at night.

MISSED APPROACH: Climb to 1600 then climbing left turn to 3000 direct FIKKA and hold.

ASOS	RALEIGH APP CON	CLNC DEL	UNICOM
<b>134.575</b>	<b>132.35 256.9</b>	<b>126.5</b>	<b>123.0 (CTAF) 0</b>



ELEV 511	TDZE 511
----------	----------



CATEGORY	A	B	C	D
LNVA MDA	1060-1	549 (600-1)	1060-1½	549 (600-1½)
CIRCLING	1100-1 589 (600-1)	1120-1 609 (700-1)	1120-1½ 609 (700-1½)	1120-2 609 (700-2)

SE-2: 07 DEC 2017 to 04 JAN 2018

SE-2: 07 DEC 2017 to 04 JAN 2018

VORTAC RDU <b>117.2</b> Chan <b>119</b>	APP CRS <b>290°</b>	Rwy Idg TDZE Apt Elev	<b>3275</b> <b>510</b> <b>511</b>
---	------------------------	-----------------------------	---

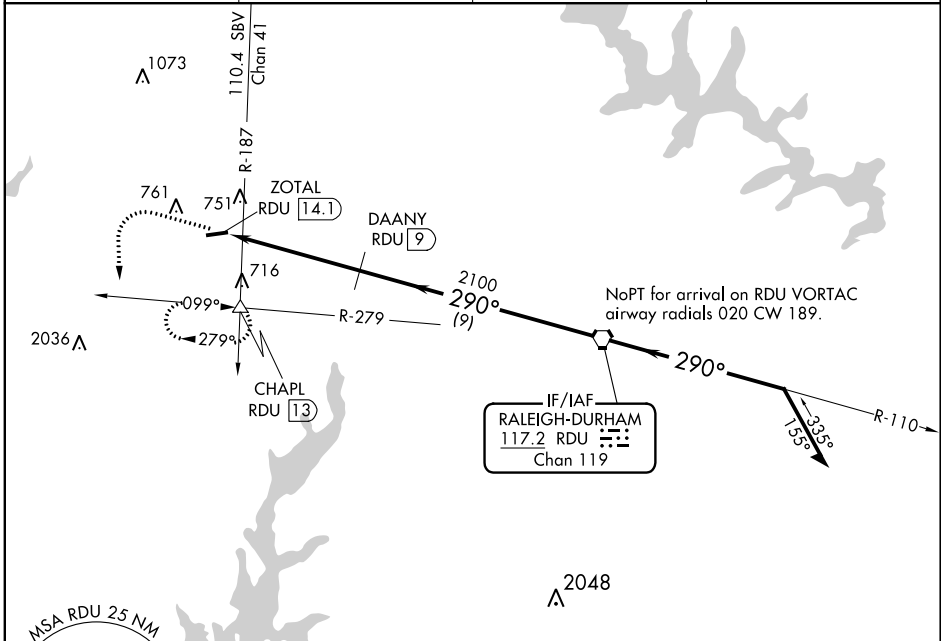
# VOR RWY 27

HORACE WILLIAMS (IGX)

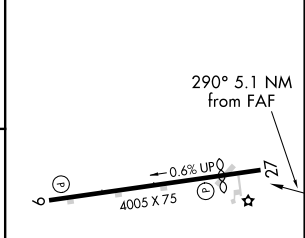
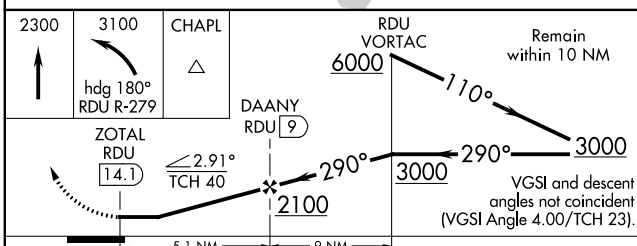
Procedure NA at night. Rwy 9, 27 helicopter visibility reduction below 1 SM NA. DME required.

MISSED APPROACH: Climb to 2300 then climbing left turn to 3100 on heading 180° and on RDU VORTAC R-279 to CHAPL INT/RDU 13 DME and hold.

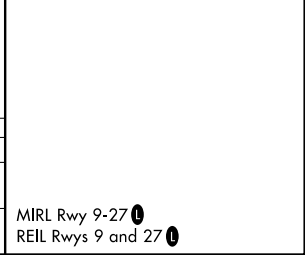
ASOS <b>134.575</b>	RALEIGH APP CON <b>132.35 256.9</b>	CLNC DEL <b>126.5</b>	UNICOM <b>123.0 (CTAF)</b>
------------------------	--	--------------------------	-------------------------------



ELEV 511	TDZE 510
----------	----------



CATEGORY	A	B	C	D
S-27	1060-1	568 (600-1)	1060-1 $\frac{5}{8}$	568 (600-1 $\frac{5}{8}$ )
CIRCLING	1100-1 589 (600-1)	1120-1 609 (700-1)	1120-1 $\frac{3}{4}$ 609 (700-1 $\frac{3}{4}$ )	1120-2 609 (700-2)



SE-2: 07 DEC 2017 to 04 JAN 2018

SE-2: 07 DEC 2017 to 04 JAN 2018