

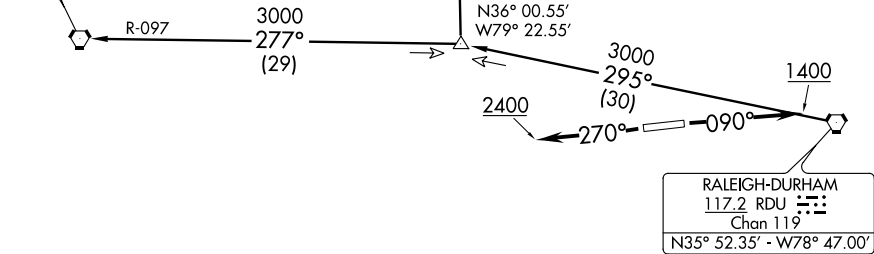
# BLUE DEVIL FIVE DEPARTURE

RALEIGH CLNC DEL  
120.1  
RALEIGH DEP CON  
132.35 256.9  
ASOS  
134.575

GREENSBORO  
116.2 GSO  
Chan 109  
N36° 02.74' - W79° 58.58'  
L-25-36, H-9-12

DANVILLE  
113.1 DAN  
N36° 34.13' - W79° 20.20'  
L-26-36

TAKEOFF MINIMUMS  
Rwys 9, 27: Standard.



NOTE: RADAR required.  
NOTE: Turbojets NA.

NOTE: Chart not to scale.

## DEPARTURE ROUTE DESCRIPTION

TAKEOFF RWY 9: Climb heading 090° to 1400, thence....

TAKEOFF RWY 27: Climb heading 270° to 2400, thence....

....or as assigned for vectors to assigned transition. Expect clearance to filed altitude/flight level ten minutes after departure.

DANVILLE TRANSITION (BLUE5.DAN): From over RDU VORTAC via RDU R-295 to JAYRR INT then via DAN R-189 to DAN VOR.

GREENSBORO TRANSITION (BLUE5.GSO): From over RDU VORTAC via RDU R-295 to JAYRR INT then via GSO R-097 to GSO VORTAC.