

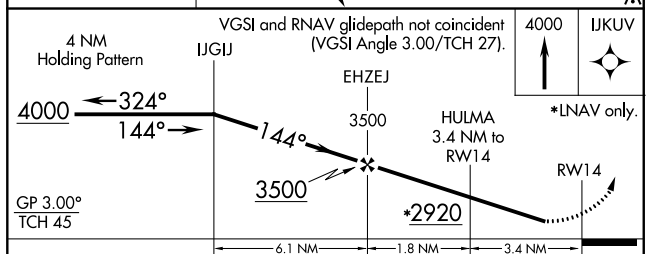
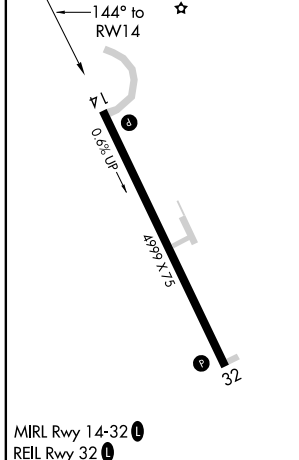
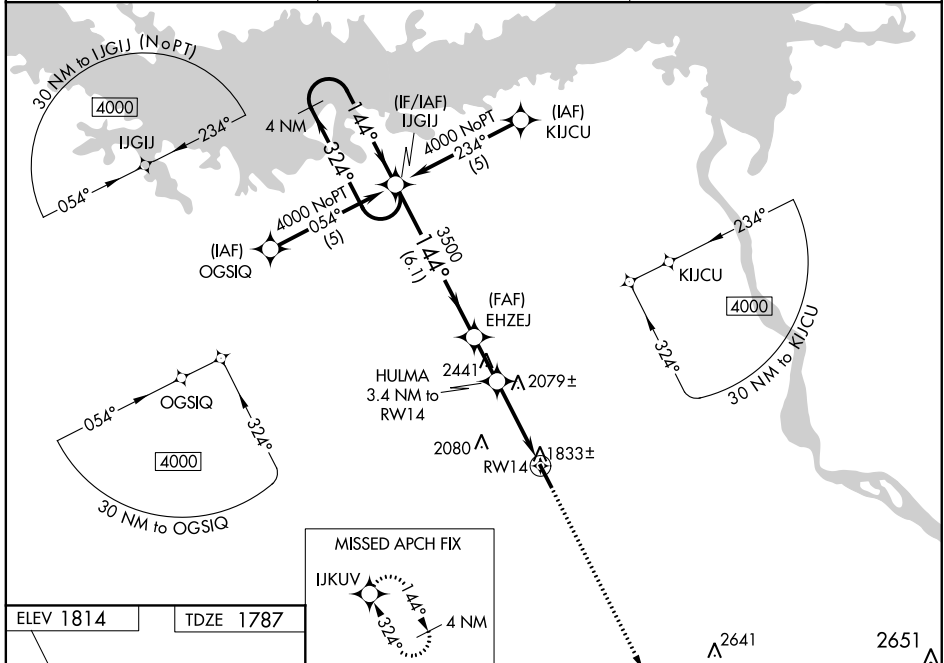
WAAS CH <b>48818</b> <b>W14A</b>	APP CRS <b>144°</b>	Rwy Idg <b>4999</b> TDZE <b>1787</b> Apt Elev <b>1814</b>
--	------------------------	---

# RNAV (GPS) RWY 14

MERCER COUNTY RGNL (HZE)

RNP APCH.	When local altimeter setting not received, use Bismarck altimeter setting. Rwy 14 helicopter visibility reduction below 1 SM NA. For uncompensated Baro-VNAV systems, LNAV/VNAV NA below -18°C or above 54°C. Baro-VNAV NA when using Bismarck altimeter setting. When VGSI inoperative, procedure NA at night.	MISSED APPROACH: Climb to 4000 direct IKUV and hold.
-----------	---	---

AWOS-3PT <b>118.675</b>	MINNEAPOLIS CENTER <b>124.25 236.825</b>	UNICOM <b>122.8 (CTAF) 0</b>
----------------------------	---	---------------------------------



CATEGORY	A	B	C	D
LPV DA	2165-1¼	378 (400-1¼)		NA
LNAV/VNAV DA	2231-1½	444 (500-1½)		NA
LNAV MDA	2460-1	673 (700-1)	2460-2 673 (700-2)	NA
CIRCLING	2460-1	646 (700-1)	2460-2 646 (700-2)	NA

NC-1, 15 JUL 2021 to 12 AUG 2021

NC-1, 15 JUL 2021 to 12 AUG 2021

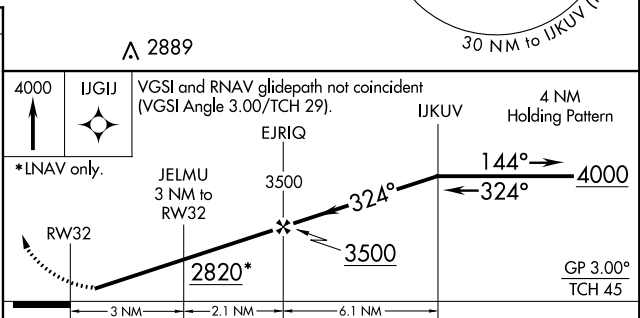
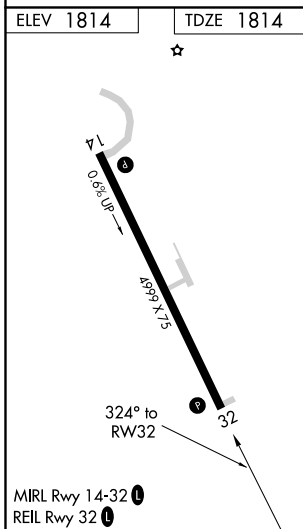
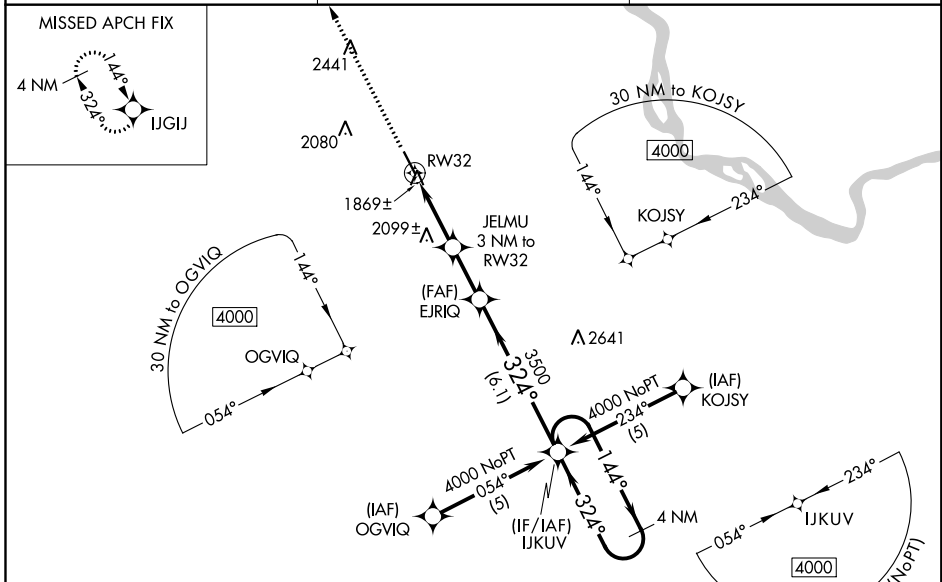
WAAS CH <b>53318</b> W32A	APP CRS <b>324°</b>	Rwy Idg <b>4999</b> TDZE <b>1814</b> Apt Elev <b>1814</b>
---------------------------------	------------------------	---

# RNAV (GPS) RWY 32

MERCER COUNTY RGNL (HZE)

RNP APCH.	When VGSI inoperative, procedure NA at night. Rwy 14 helicopter visibility reduction below 1 SM NA. When local altimeter setting not received, use Bismarck altimeter setting. For uncompensated Baro-VNAV systems, LNAV/VNAV NA below -18°C or above 54°C. Baro-VNAV NA when using Bismarck altimeter setting.	MISSED APPROACH: Climb to 4000 direct IJGIJ and hold.
-----------	---	---

AWOS-3PT <b>118.675</b>	MINNEAPOLIS CENTER <b>124.25 236.825</b>	UNICOM <b>122.8 (CTAF) 0</b>
----------------------------	---	---------------------------------



CATEGORY	A	B	C	D
LPV DA	2192-1¼		378 (400-1¼)	NA
LNAV/VNAV DA	2352-2		538 (600-2)	NA
LNAV MDA	2480-1	666 (700-1)	2480-1¼ 666 (700-1¼)	NA
CIRCLING	2480-1	666 (700-1)	2480-1¼ 666 (700-1¼)	NA

NC-1, 15 JUL 2021 to 12 AUG 2021

NC-1, 15 JUL 2021 to 12 AUG 2021