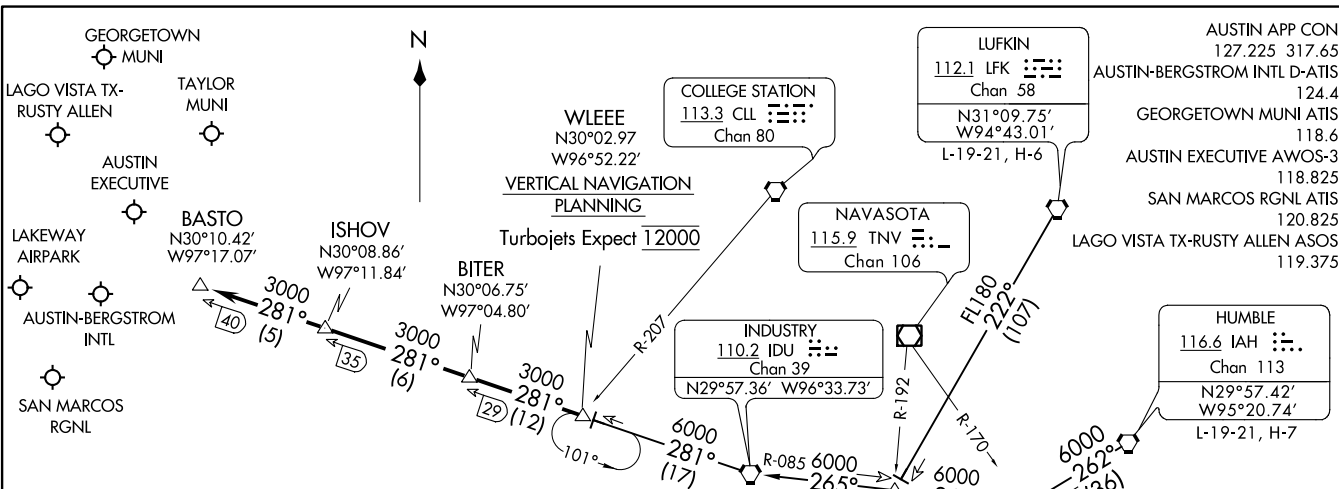


BITER NINE ARRIVAL  
(WLEEE.BITER9) 25APR19



(WLEEE.BITER9) 19115  
BITER NINE ARRIVAL

AL-556 (FAA)

AUSTIN, TEXAS

**ARRIVAL ROUTE DESCRIPTION**

**HUMBLE TRANSITION (IAH.BITER9):** From over IAH VORTAC on IAH R-262 to SHYNR INT, then on IDU R-085 to IDU VORTAC, then on IDU R-281 to WLEEE INT. Thence . . . .

**INDUSTRY TRANSITION (IDU.BITER9):** From over IDU VORTAC on IDU R-281 to WLEEE INT. Thence . . . .

**LUFKIN TRANSITION (LFK.BITER9):** From over LFK VORTAC on LFK R-222 to BOCCK INT, then on IDU R-085 to IDU VORTAC, then on IDU R-281 to WLEEE INT. Thence . . . .

. . . . From over WLEEE on IDU R-281 to BITER, then on IDU R-281 to ISHOV, then on IDU R-281 to BASTO. Expect vectors to final approach course at or prior to BASTO.

- NOTE: RADAR required.
- NOTE: DME required.
- NOTE: DME/DME/IRU or GPS equipped aircraft must file the WLEEE (RNAV) or POTRR (RNAV) STAR.

NOTE: Chart not to scale.

AUSTIN, TEXAS

# BLEWE FOUR ARRIVAL

AUSTIN, TEXAS

AUSTIN APP CON  
127.225 317.65  
AUSTIN-BERGSTROM INTL D-ATIS  
124.4  
AUSTIN EXECUTIVE AWOS-3  
118.825  
SAN MARCOS RGNL ATIS  
120.825  
LAGO VISTA TX-RUSTY ALLEN ASOS  
119.375

WACO  
115.3 ACT   
Chan 100  
N31°39.74'-W97°16.14'  
L-19, H-6

MAVERICK  
113.1 TTT   
Chan 78  
L-17, H-6

WINDU  
N31°31.83'  
W97°04.95'  
L-19, H-6-7

GOOCH SPRINGS  
112.5 AGJ   
Chan 72  
L-19, H-6

BLEWE  
N31°12.46'  
W97°12.54'

SEWZY  
N30°48.80'  
W97°21.74'  
VERTICAL NAVIGATION  
PLANNING

CENTEX  
112.8 CWK   
Chan 75  
N30°22.71'-W97°31.79'  
L-19-21, H-6

LAGO VISTA TX-  
RUSTY ALLEN

Expect 13000  
TAYLOR  
MUNI

AUSTIN  
EXECUTIVE

LAKEWAY  
AIRPARK

AUSTIN-BERGSTROM  
INTL

SAN MARCOS MUNI

- NOTE: RADAR required.
- NOTE: DME required.
- NOTE: DME/DME/IRU or GPS equipped turbojet and turboprop aircraft must file the SEWZY (RNAV) or MSTLO (RNAV) STAR.

NOTE: Chart not to scale.

## ARRIVAL ROUTE DESCRIPTION

WACO TRANSITION (ACT.BLEWE4): From over ACT VORTAC on ACT R-165 to BLEWE INT. Thence . . .

WINDU TRANSITION (WINDU.BLEWE4): From over WINDU INT on CWK R-012 to BLEWE INT. Thence . . .

. . . From over BLEWE on CWK R-012 to SEWZY, then on CWK R-012 to CWK VORTAC. Expect vectors to final approach course at or prior to CWK VORTAC.

SC-3, 10 OCT 2019 to 07 NOV 2019

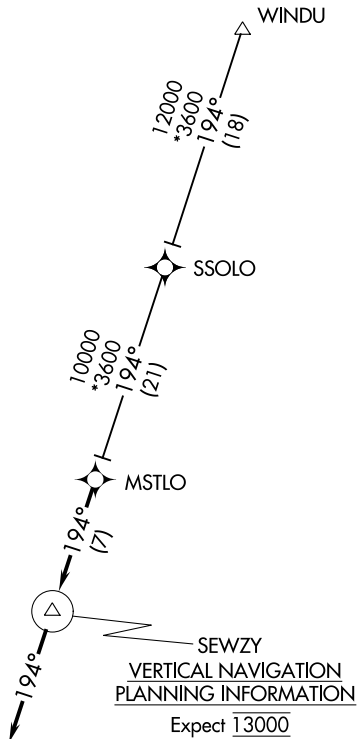
SC-3, 10 OCT 2019 to 07 NOV 2019

# MSTLO THREE ARRIVAL (RNAV)

AUSTIN, TEXAS

AUSTIN APP CON  
 127.225 317.65  
 GEORGETOWN MUNI ATIS  
 118.6  
 SAN MARCOS RGNL ATIS  
 120.825  
 AUSTIN EXECUTIVE AWOS-3  
 118.825

- NOTE: RADAR required.
- NOTE: RNAV 1.
- NOTE: DME/DME/IRU or GPS required.
- NOTE: Turbojet and turboprop aircraft only.



NOTE: Chart not to scale.

## ARRIVAL ROUTE DESCRIPTION

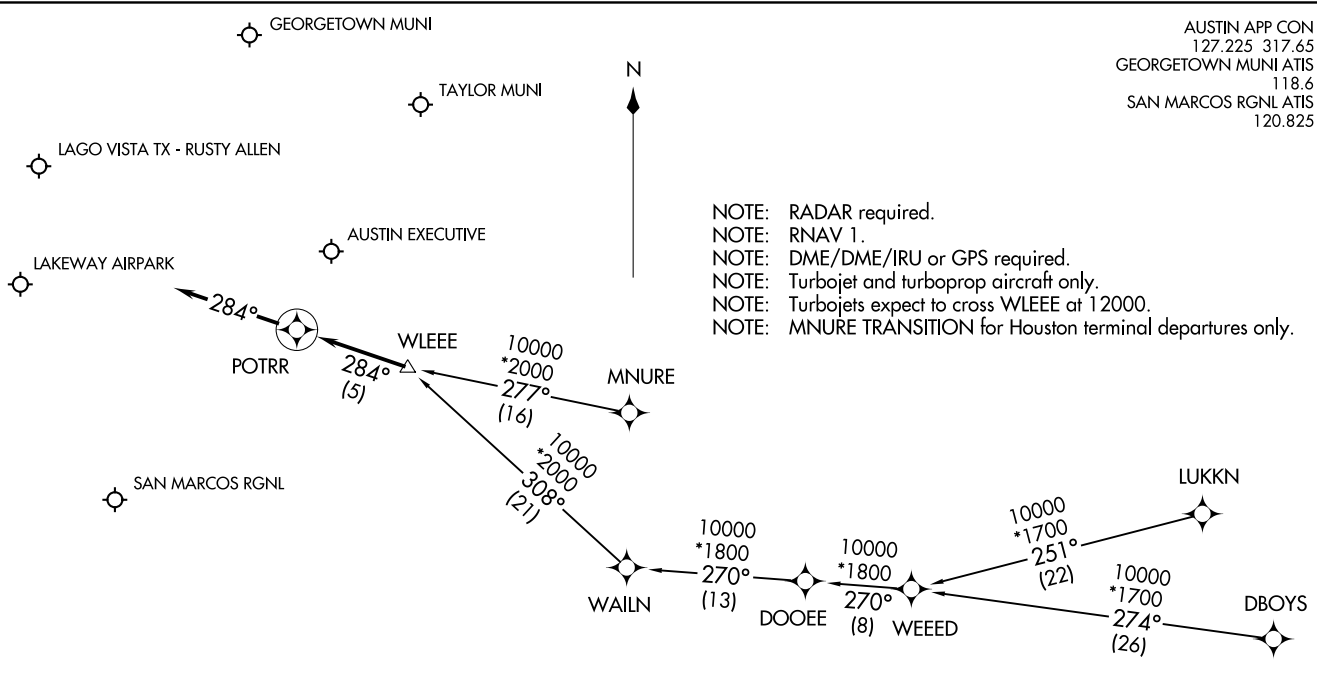
SSOLO TRANSITION (SSOLO.MSTLO3)  
WINDU TRANSITION (WINDU.MSTLO3)

LANDING ALL AIRPORTS: From MSTLO on track 194° to SEWZY, then on track 194°. Expect RADAR vectors to final approach course.

POTRR ONE ARRIVAL (RNAV)  
(WLEEE.POTRR1) 07DEC17

(WLEEE.POTRR1) 18256  
POTRR ONE ARRIVAL (RNAV)

AUSTIN APP CON  
127.225 317.65  
GEORGETOWN MUNI ATIS  
118.6  
SAN MARCOS RGNL ATIS  
120.825



- NOTE: RADAR required.
- NOTE: RNAV 1.
- NOTE: DME/DME/IRU or GPS required.
- NOTE: Turbojet and turboprop aircraft only.
- NOTE: Turbojets expect to cross WLEEE at 12000.
- NOTE: MNURE TRANSITION for Houston terminal departures only.

AL-5891 (FAA)

ARRIVAL ROUTE DESCRIPTION

- DBOYS TRANSITION (DBOYS.POTRR1)
- LUKKN TRANSITION (LUKKN.POTRR1)
- MNURE TRANSITION (MNURE.POTRR1)
- WEEED TRANSITION (WEEED.POTRR1)

LANDING ALL AIRPORTS: From WLEEE on track 284° to POTRR, then on track 284°. Expect RADAR vectors to final approach course.

AUSTIN, TEXAS

AUSTIN, TEXAS