

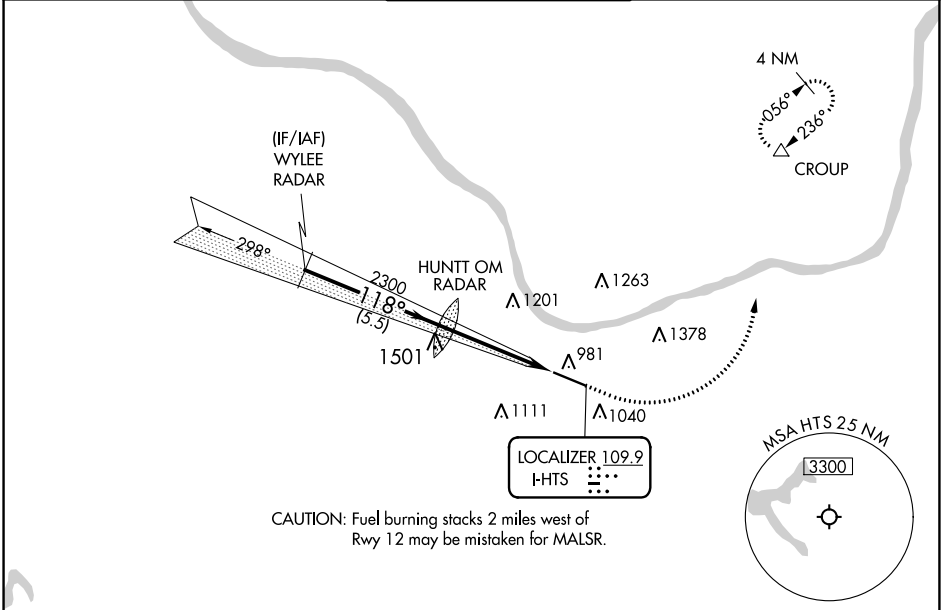
LOC I-HTS 109.9	APP CRS 118°	Rwy Idg TDZE Apt Elev	6516 828 828
---------------------------	------------------------	-----------------------------	---

ILS or LOC RWY 12

TRI-STATE/MILTON J FERGUSON FLD (HTS)

RNAV-1 GPS required. RADAR required.	MALSR	MISSED APPROACH: Climb to 1700 then climbing left turn to 3000 direct CROUP and hold.
⚠ ** RVR 1800 authorized with use of FD or AP or HUD to DA. ASR		

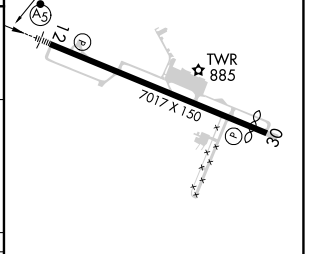
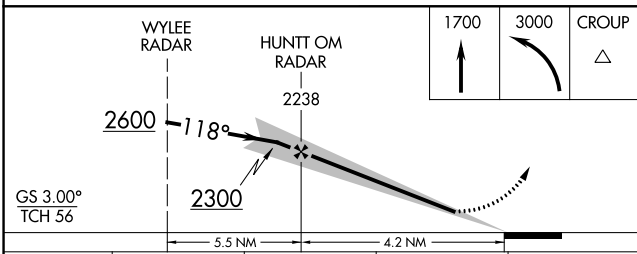
ATIS 125.2	HUNTINGTON APP CON 119.75 270.1	HUNTINGTON TOWER 118.5 270.1	GND CON 121.9	CLNC DEL 118.05
----------------------	---	--	-------------------------	---------------------------



NE-4, 19 MAY 2022 to 16 JUN 2022

NE-4, 19 MAY 2022 to 16 JUN 2022

ELEV 828	D	TDZE 828
----------	----------	----------



CATEGORY	A	B	C	D
S-ILS 12**	1028/24		200 (200-½)	
S-LOC 12	1380/24	552 (600-½)	1380/60	552 (600-1¼)
C CIRCLING	1380-1	552 (600-1)	1520-2 692 (700-2)	1820-3 992 (1000-2)

REIL Rwy 30	
HIRL Rwy 12-30	
FAF to MAP 4.2 NM	
Knots	60 90 120 150 180
Min:Sec	4:12 2:48 2:06 1:41 1:24

LOC I-TUU 108.7	APP CRS 298°	Rwy ldg 6516	TDZE 828
		Apt Elev 828	

ILS or LOC RWY 30

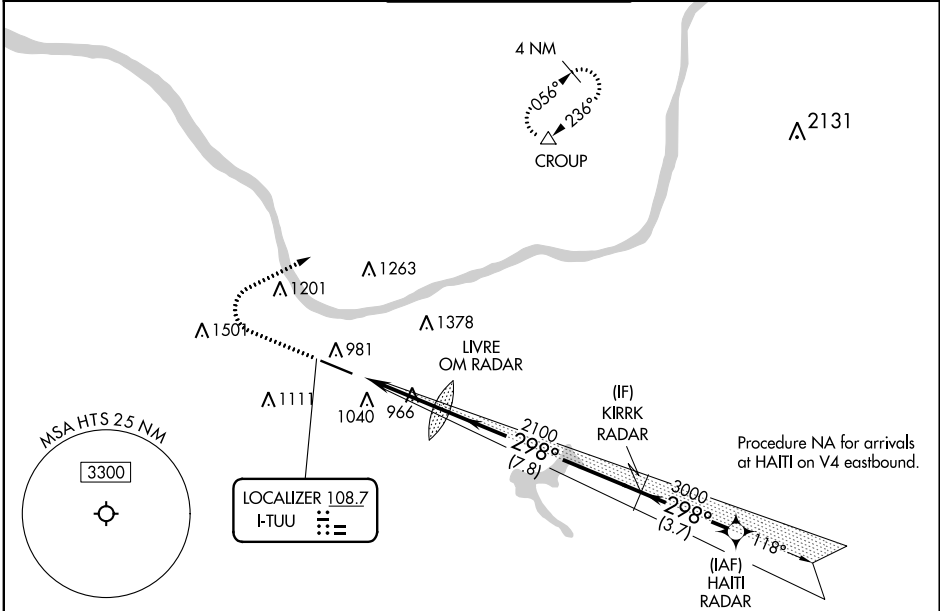
TRI-STATE/MILTON J FERGUSON FLD (HTS)

RNAV 1-GPS required. RADAR required.

▼
▲
ASR

MISSED APPROACH: Climb to 1700 then climbing right turn to 3000 direct CROUP and hold.

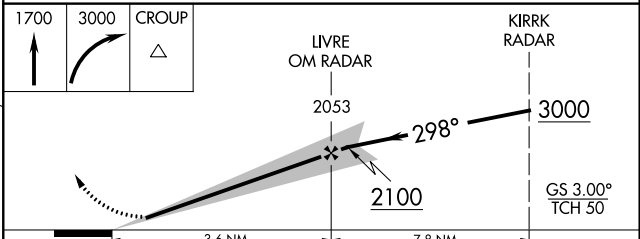
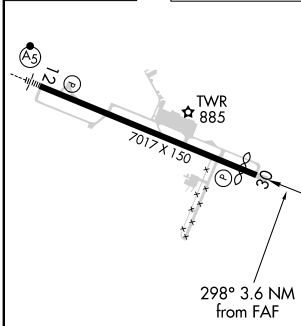
ATIS 125.2	HUNTINGTON APP CON 119.75 270.1	HUNTINGTON TOWER 118.5 270.1	GND CON 121.9	CLNC DEL 118.05
----------------------	---	--	-------------------------	---------------------------



NE-4, 19 MAY 2022 to 16 JUN 2022

NE-4, 19 MAY 2022 to 16 JUN 2022

ELEV 828	D	TDZE 828
----------	----------	----------



	3.6 NM		7.8 NM	
CATEGORY	A	B	C	D
S-ILS 30	1028- ³ / ₄		200 (200- ³ / ₄)	
S-LOC 30	1220-1	392 (400-1)	1220-1 ¹ / ₈	392 (400-1 ¹ / ₈)
<input checked="" type="checkbox"/> CIRCLING	1320-1 492 (500-1)	1380-1 552 (600-1)	1520-2 692 (700-2)	1820-3 992 (1000-3)

REIL Rwy 30
HIRL Rwy 12-30

FAF to MAP 3.6 NM

Knots	60	90	120	150	180
Min:Sec	3:36	2:24	1:48	1:26	1:12

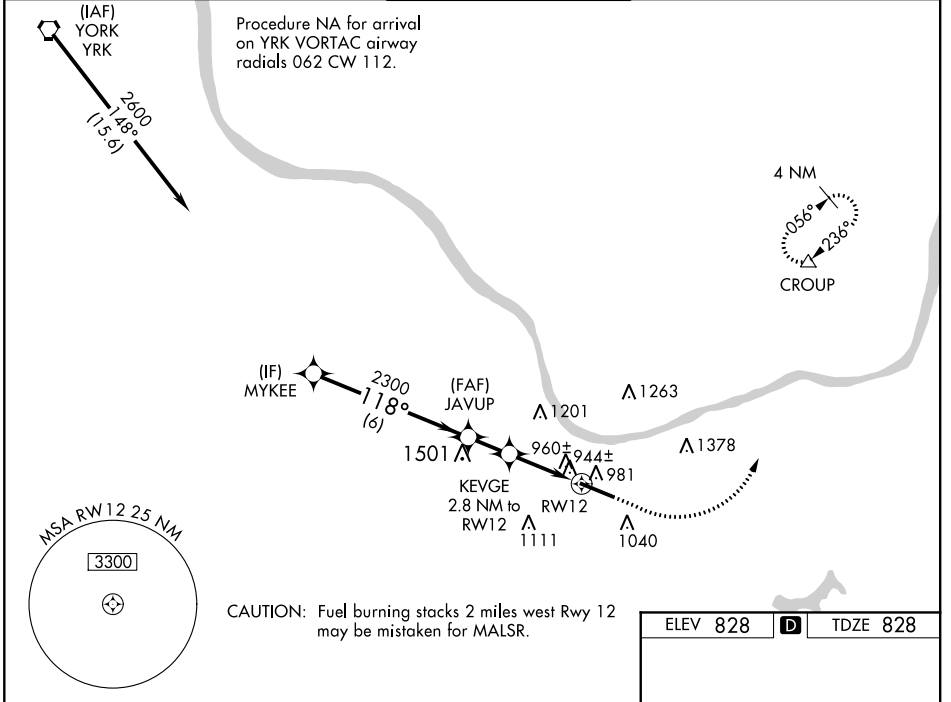
ILS or LOC RWY 30

WAAS CH 45699 W12A	APP CRS 118°	Rwy Idg TDZE Apt Elev	6516 828 828
--	------------------------	-----------------------------	---

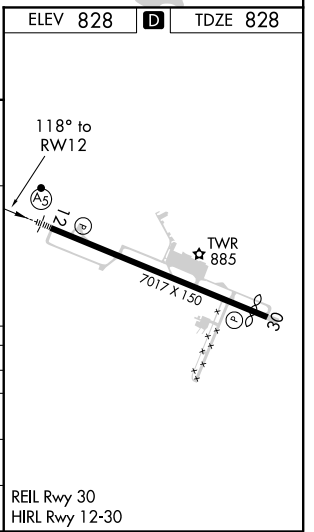
RNAV (GPS) RWY 12

TRI-STATE/MILTON J FERGUSON FLD (HTS)

RNP APCH.		MALSR		MISSED APPROACH: Climb to 1700 then climbing left turn to 3000 direct CROUP and hold.	
<p>▽ For inoperative ALS, increase LNAV/VNAV all Cats visibility to RVR 4500, LNAV Cat A/B to RVR 5500, Cat C/D to RVR 6000. For uncompensated Baro-VNAV systems, LNAV/VNAV NA below -16°C or above 38°C. Rwy 12 helicopter visibility reduction below ¾ SM NA. Inoperative table does not apply to LPV.</p>					
ATIS 125.2	HUNTINGTON APP CON 119.75 270.1	HUNTINGTON TOWER 118.5 270.1	GND CON 121.9	CLNC DEL 118.05	



	1700	3000	CROUP
	↑	↪	△
	*LNAV only.		
MYKEE	JAVUP	KEVGE	
2600	2300	2.8 NM to RWY12	
GP 3.00°	118°	*1.1 NM to RWY12	
TCH 56	2300	*1760	
	6 NM	1.7 NM	1.1 NM
CATEGORY	A	B	C
LPV DA		1028/40	200 (200-¾)
LNAV/VNAV DA		1126/40	298 (300-¾)
LNAV MDA		1220/40	392 (400-¾)
CIRCLING	1340-1 512 (600-1)	1380-1 552 (600-1)	1520-2 692 (700-2)



NE-4, 19 MAY 2022 to 16 JUN 2022

NE-4, 19 MAY 2022 to 16 JUN 2022

WAAS CH 66017 W30A	APP CRS 298°	Rwy Idg TDZE Apt Elev	6516 828 828
--	------------------------	-----------------------------	---

RNAV (GPS) RWY 30

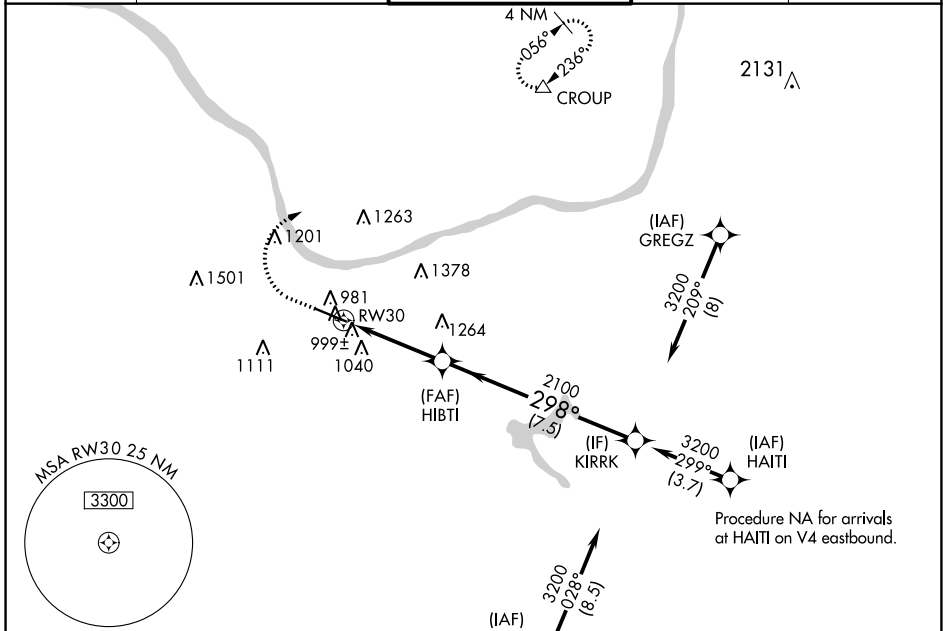
TRI-STATE/MILTON J FERGUSON FLD (HTS)

RNP APCH.

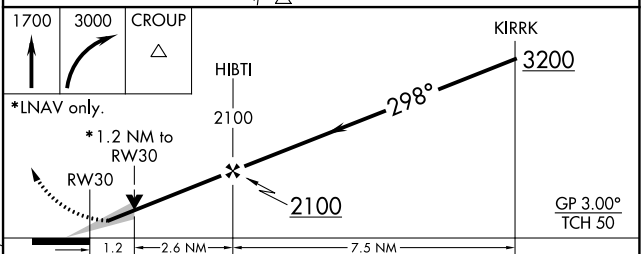
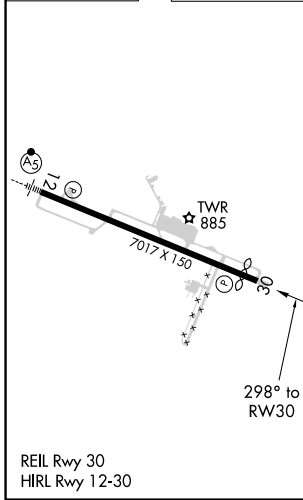
ASR For uncompensated Baro-VNAV systems, LNAV/VNAV NA below -18°C or above 54°C.

MISSED APPROACH: Climb to 1700 then climbing right turn to 3000 direct CROUP and hold.

ATIS 125.2	HUNTINGTON APP CON 119.75 270.1	HUNTINGTON TOWER 118.5 270.1	GND CON 121.9	CLNC DEL 118.05
----------------------	---	--	-------------------------	---------------------------



ELEV 828	D	TDZE 828
----------	----------	----------



CATEGORY	A	B	C	D
LPV DA		1028- ³ / ₄	200 (200- ³ / ₄)	
LNAV/VNAV DA		1180-1	352 (400-1)	
LNAV MDA	1260-1	432 (500-1)	1260-1 ¹ / ₄	432 (500-1 ¹ / ₄)
C CIRCLING	1320-1 492 (500-1)	1380-1 552 (600-1)	1520-2 692 (700-2)	1820-3 992 (1000-3)

NE-4, 19 MAY 2022 to 16 JUN 2022

NE-4, 19 MAY 2022 to 16 JUN 2022