

LOC I-HSP 108.7	APP CRS 247°	Rwy Idg 5600 TDZE 3773 Apt Elev 3793
---------------------------	------------------------	---

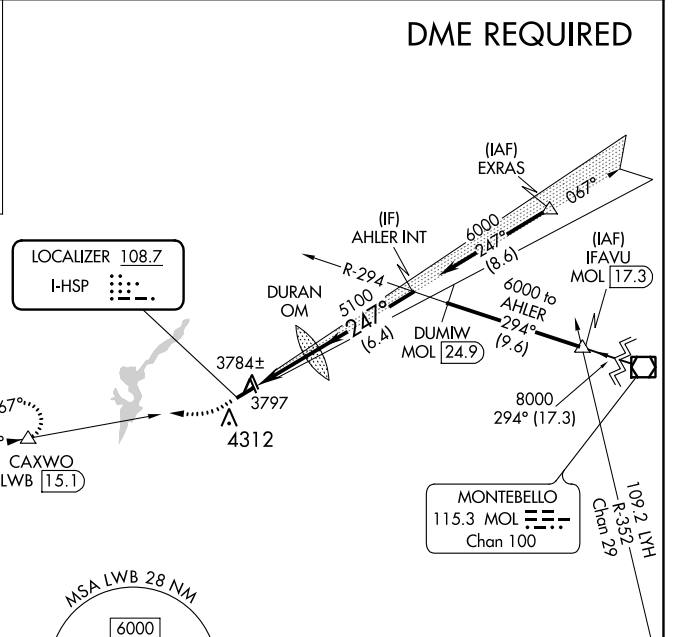
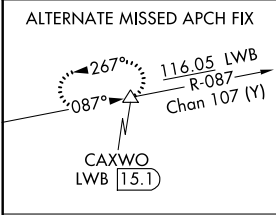
ILS or LOC RWY 25

INGALLS FIELD (HSP)

NA Circling NA southeast of Rwy 7-25. When local altimeter setting not received, procedure NA.

MISSED APPROACH: Climb to 4400 then climbing right turn to 5600 on LWB VOR/DME R-087 to CAXWO/LWB 15.1 DME and hold.

AWOS-3 118.8	WASHINGTON CENTER 134.4 353.9	UNICOM 123.0 (CTAF) 0
------------------------	---	---------------------------------



ELEV 3793	TDZE 3773
------------------	------------------

247° 3.7 NM from FAF

3780 Δ

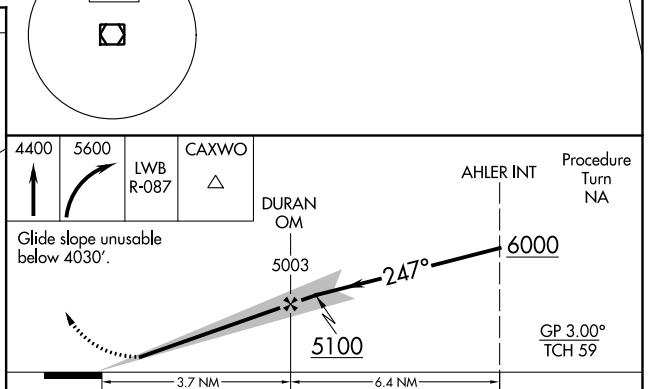
3825 \star

3833 Δ

5600 X 100

0.5% UP

5% Δ



REIL Rwy 25 Δ

HIRL Rwy 7-25 Δ

FAF to MAP 3.7 NM

Knots	60	90	120	150	180
Min:Sec	3:42	2:28	1:51	1:29	1:14

CATEGORY	A	B	C	D
S-ILS 25	4088-1 315 (300-1)			
S-LOC 25	4240-1	467 (500-1)	4240-1 $\frac{1}{4}$ 467 (500-1 $\frac{1}{4}$)	4240-1 $\frac{1}{2}$ 467 (500-1 $\frac{1}{2}$)
CIRCLING	4440-1	647 (700-1)	4480-2 687 (700-2)	4480-2 $\frac{1}{4}$ 687 (700-2 $\frac{1}{4}$)

NE-3, 01 MAR 2018 to 29 MAR 2018

NE-3, 01 MAR 2018 to 29 MAR 2018

WAAS CH 53713 W25A	APP CRS 247°	Rwy Idg TDZE Apt Elev	5600 3773 3793
--	------------------------	-----------------------------	---

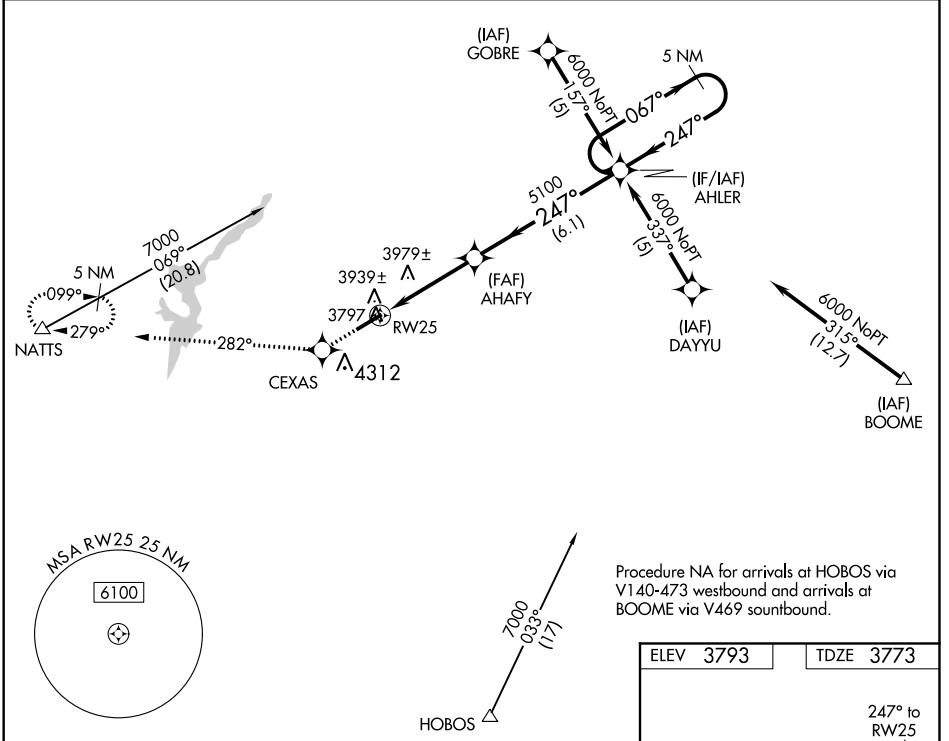
RNAV (GPS) RWY 25

INGALLS FIELD (HSP)

▼ Circling NA SE of Rwy 7-25. Baro-VNAV NA.
▲ DME/DME RNP-0.3 NA.
 When local altimeter setting not received, procedure NA.

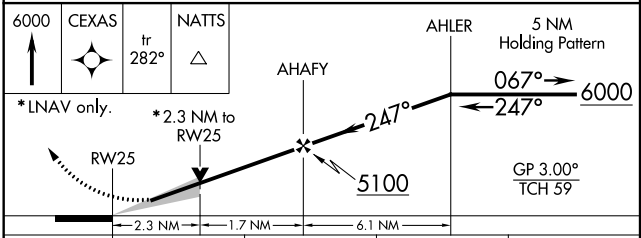
MISSED APPROACH: Climb to 6000 direct CEXAS and via track 282° to NATTS and hold.

AWOS-3 118.8	WASHINGTON CENTER 134.4 353.9	UNICOM 123.0 (CTAF) 0
------------------------	---	---------------------------------



NE-3, 01 MAR 2018 to 29 MAR 2018

NE-3, 01 MAR 2018 to 29 MAR 2018



CATEGORY	A	B	C	D
LPV DA	4164-1¼ 391 (400-1¼)			
LNAV/VNAV DA	4309-2 536 (600-2)			
LNAV MDA	4560-1 787 (800-1)	4560-1¼ 787 (800-1¼)	4560-2¼ 787 (800-2¼)	4560-2½ 787 (800-2½)
CIRCLING	4560-1 767 (800-1)	4560-1¼ 767 (800-1¼)	4560-2¼ 767 (800-2¼)	4560-2½ 767 (800-2½)

ELEV 3793	TDZE 3773
-----------	-----------

REIL Rwy 25 0
 HIRL Rwy 7-25 0

WAAS CH 86813 W07A	APP CRS 067°	Rwy Idg TDZE Apt Elev	5600 3793 3793
--	------------------------	-----------------------------	---

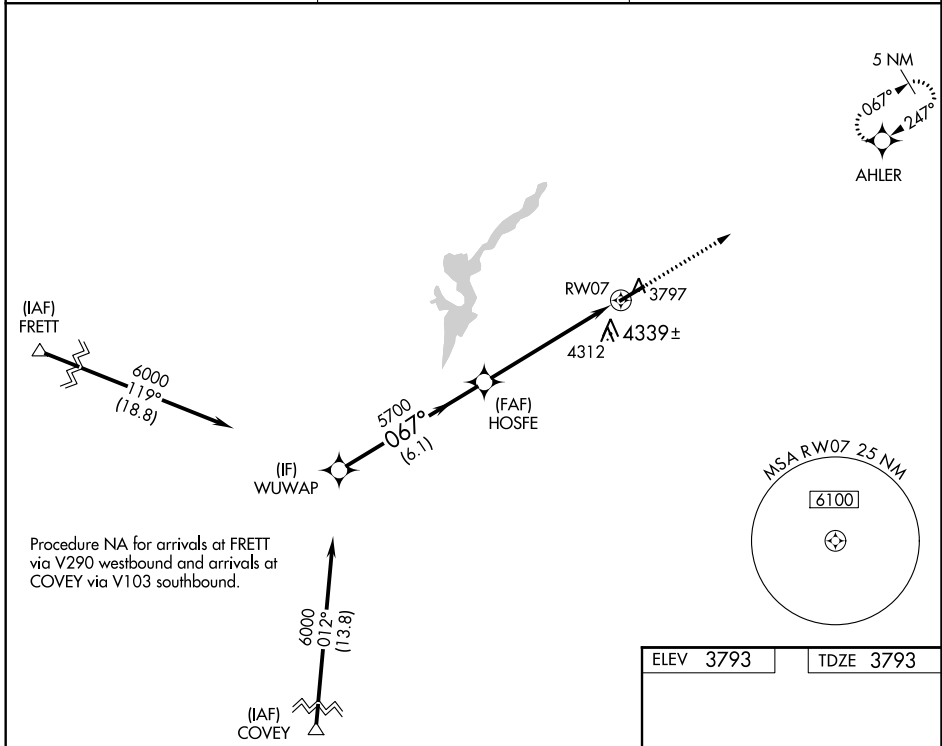
RNAV (GPS) RWY 7

INGALLS FIELD (HSP)

⚠ Circling NA southeast of Rwy 7-25. Baro-VNAV NA.
⚠ DME/DME RNP-0.3 NA. Visibility reduction by helicopters NA.
 When local altimeter setting not received, procedure NA.

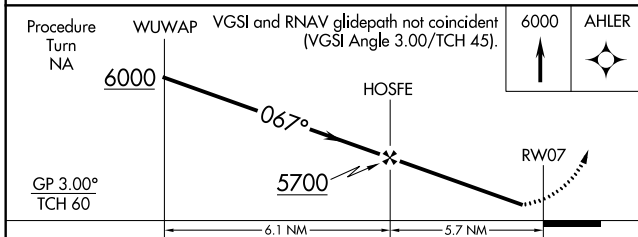
MISSED APPROACH: Climb to 6000 direct AHLER and hold.

AWOS-3 118.8	WASHINGTON CENTER 134.4 353.9	UNICOM 123.0 (CTAF) 0
------------------------	---	---------------------------------

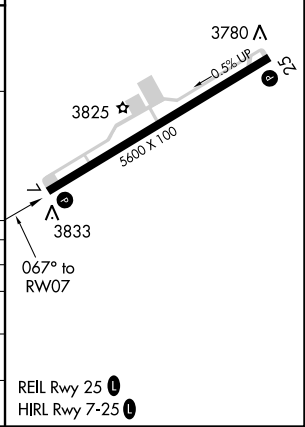


NE-3, 01 MAR 2018 to 29 MAR 2018

NE-3, 01 MAR 2018 to 29 MAR 2018



ELEV 3793	TDZE 3793
-----------	-----------



CATEGORY	A	B	C	D
LPV DA	4143-1¼		350 (400-1¼)	
LNNAV/VNAV DA	4619-3		826 (900-3)	
LNNAV MDA	4700-1¼ 907 (1000-1¼)		4700-2¾ 907 (1000-2¾)	4700-3 907 (1000-3)
CIRCLING	4700-1¼ 907 (1000-1¼)		4700-2¾ 907 (1000-2¾)	4700-3 907 (1000-3)