

LOC/DME I-HON 110.3 Chan 40	APP CRS 121°	Rwy Idg 7201 TDZE 1289 Apt Elev 1289
---	------------------------	---

ILS or LOC RWY 12

HURON RGNL (HON)

RNAV 1-GPS or RADAR required for procedure entry. ADF required.
From HUMSO and WEDEM: RNAV-1 GPS required.

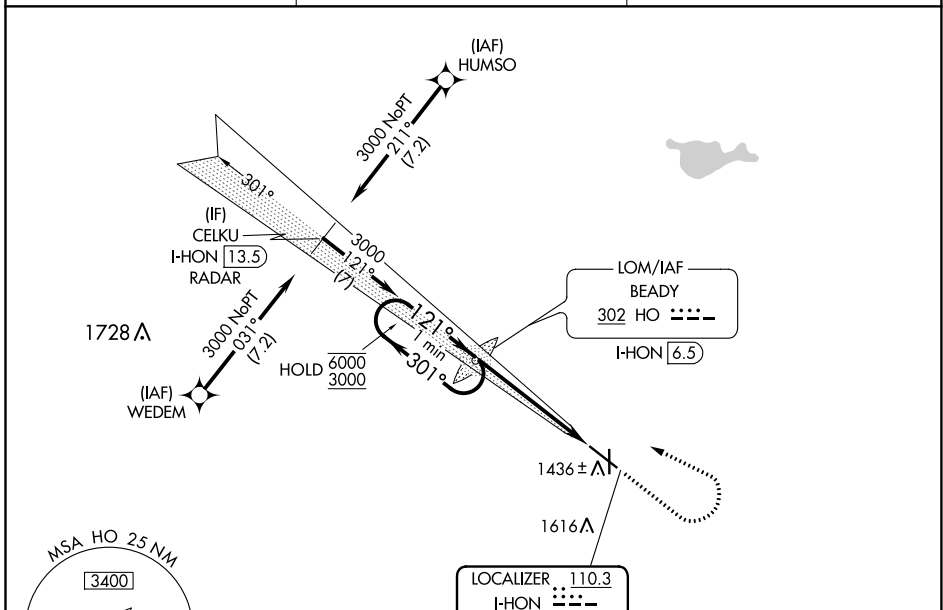
MALSRL

MISSED APPROACH: Climb to 3000 then left turn direct BEADY LOM and hold.

⚠ Circling Rwy 18, 36 NA at night. For inop ALS, increase S-LOC 12 Cat C/D to 1 3/8 SM.

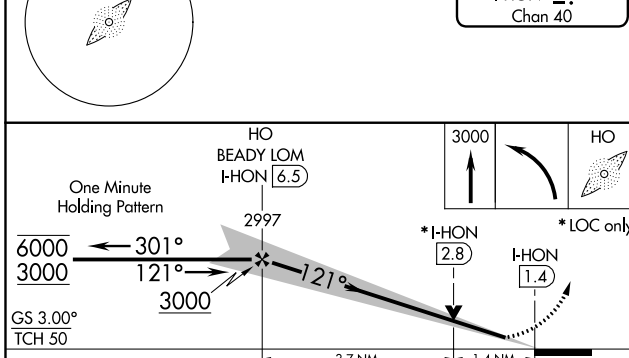


ASOS 118,125	MINNEAPOLIS CENTER 126,25 339,8	UNICOM 123,0 (CTAF) Ⓛ
------------------------	---	---------------------------------



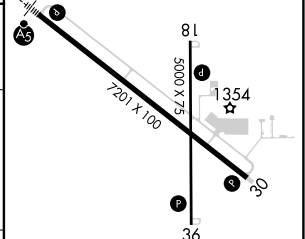
NC-1, 08 SEP 2022 to 06 OCT 2022

NC-1, 08 SEP 2022 to 06 OCT 2022



ELEV 1289	TDZE 1289
121° 5.1 NM from FAF	HIRL Rwy 12-30 Ⓛ
	MIRL Rwy 18-36 Ⓛ
	REIL Rwys 18, 30 and 36 Ⓛ

CATEGORY	A	B	C	D
S-ILS 12	1489-1/2 200 (200-1/2)			
S-LOC 12	1780-1/2	491 (500-1/2)	1780-1	491 (500-1)
C CIRCLING	1820-1	531 (600-1)	1920-1 3/4	1980-2 1/4
			631 (700-1 3/4)	691 (700-2 1/4)



FAF to MAP 5.1 NM					
Knots	60	90	120	150	180
Min:Sec	5:06	3:24	2:33	2:02	1:42

LOC/DME I-HON 110.3 Chan 40	APP CRS 301°	Rwy Idg TDZE Apt Elev	7201 1286 1289
---	------------------------	-----------------------------	---

LOC BC RWY 30

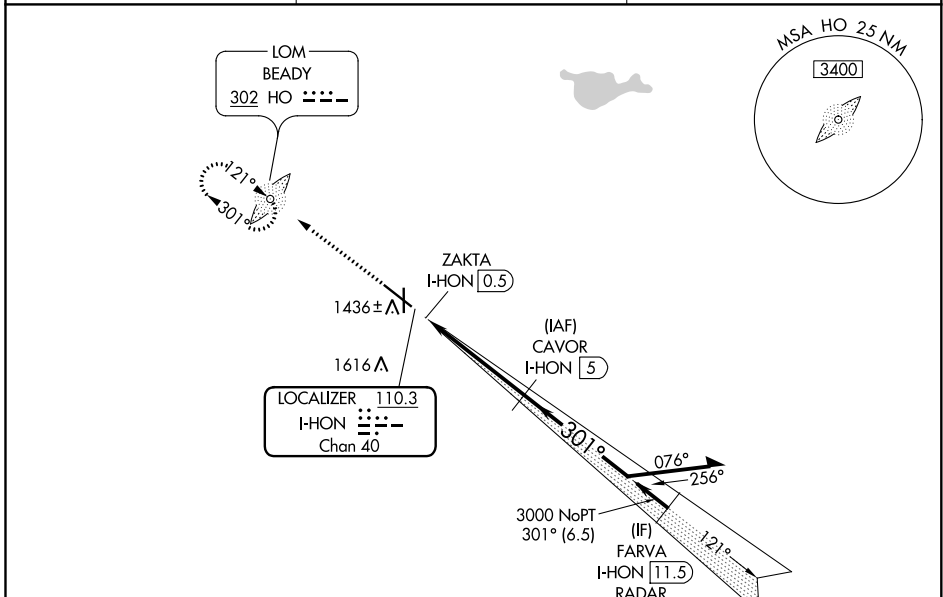
HURON RGNL (HON)

RADAR required for procedure entry. DME and ADF required.

▼ Circling Rwy 18, 36 NA at night.
▲ Rwy 30 helicopter visibility reduction below ¾ SM NA.

MISSED APPROACH: Climb to 3000 direct BEADY LOM and hold.

ASOS 118.125	MINNEAPOLIS CENTER 126.25 339.8	UNICOM 123.0 (CTAF) 0
------------------------	---	---------------------------------

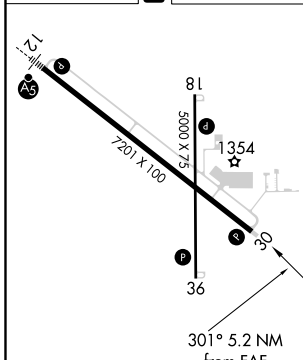


NC-1, 08 SEP 2022 to 06 OCT 2022

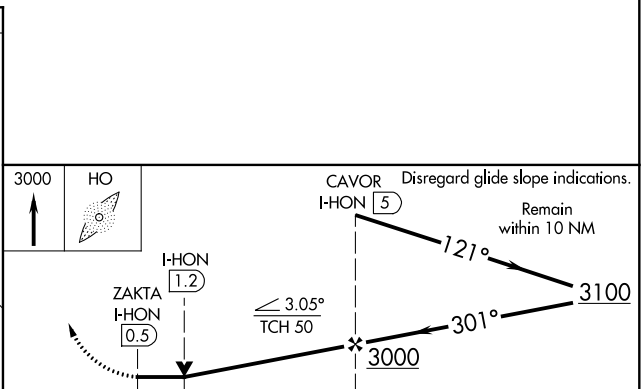
NC-1, 08 SEP 2022 to 06 OCT 2022

BACK COURSE ▲ 2176

ELEV 1289	D	TDZE 1286
-----------	----------	-----------



HIRL Rwy 12-30 0
MIRL Rwy 18-36 0
REIL Rws 18, 30 and 36 0



CATEGORY	A	B	C	D
S-30	1760-1 474 (500-1)		1760-1¾ 474 (500-1¾)	
C CIRCLING	1820-1 531 (600-1)		1920-1¾ 631 (700-1¾)	1980-2¼ 691 (700-2¼)

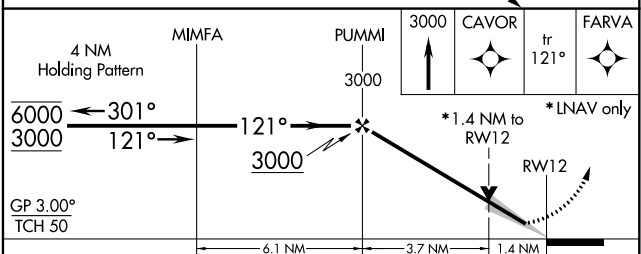
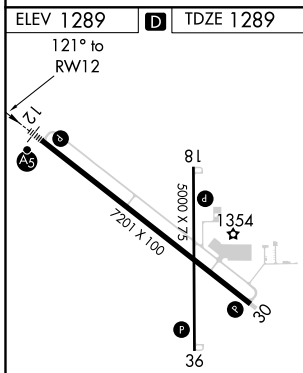
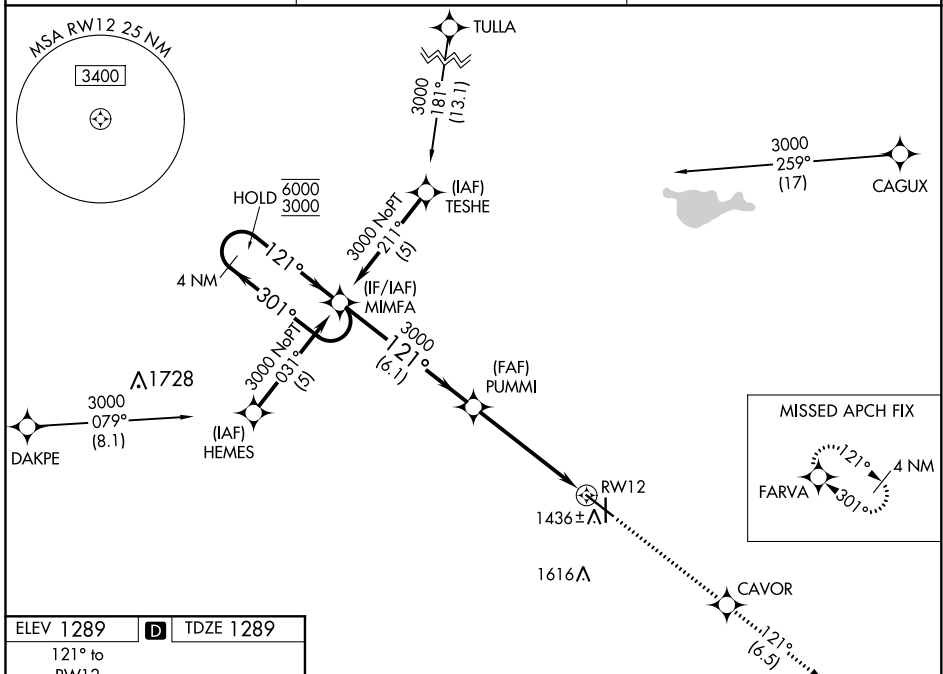
WAAS CH 70314 W12A	APP CRS 121°	Rwy Idg TDZE Apt Elev	7201 1289 1289
--	------------------------	-----------------------------	---

RNAV (GPS) RWY 12

HURON RGNL (HON)

RNP APCH.	MALSR	MISSED APPROACH: Climb to 3000 direct CAVOR and on track 121° to FARVA and hold.
<p>⚠ Circling Rwy 18, 36 NA at night. For uncompensated Baro-VNAV systems, LNAV/VNAV NA below -17°C or above 54°C. For inop ALS, increase LNAV/VNAV all CATs visibility to 1½ SM and LNAV Cat C/D to 1¾ SM.</p>		

ASOS 118.125	MINNEAPOLIS CENTER 126.25 339.8	UNICOM 123.0 (CTAF) 0
------------------------	---	---------------------------------



CATEGORY	A	B	C	D
LPV DA	1489-½ 200 (200-½)			
LNAV/VNAV DA	1699-¾ 410 (500-¾)			
LNAV MDA	1780-½ 491 (500-½)	1780-1 491 (500-1)		
C CIRCLING	1820-1 531 (600-1)	1920-1¾ 631 (700-1¾)		1980-2¼ 691 (700-2¼)

HIRL Rwy 12-30
MIRL Rwy 18-36
REIL Rwy 18, 30 and 36

HURON, SOUTH DAKOTA
Orig-B 25FEB21

44°23'N-98°14'W

RNAV (GPS) RWY 12

NC-1, 08 SEP 2022 to 06 OCT 2022

NC-1, 08 SEP 2022 to 06 OCT 2022

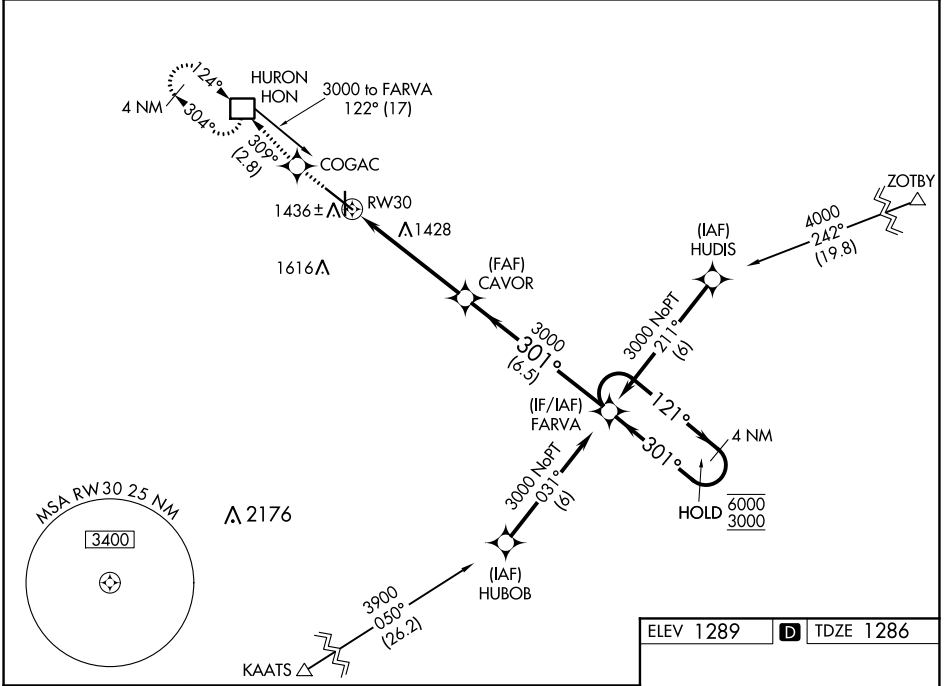
WAAS CH 77514 W30A	APP CRS 301°	Rwy Idg 7201
		TDZE 1286
		Apt Elev 1289

RNAV (GPS) RWY 30

HURON RGNL (HON)

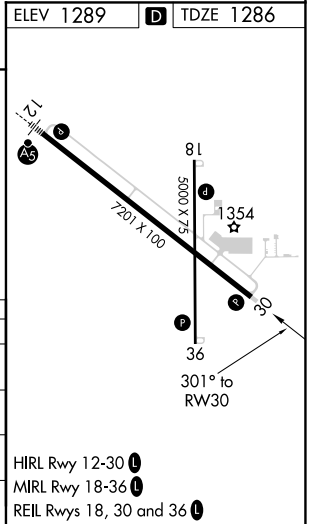
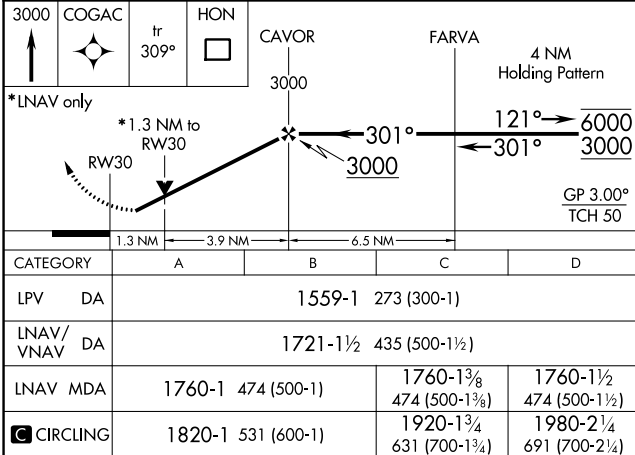
RNP APCH.	MISSED APPROACH: Climb to 3000 direct COGAC and on track 309° to HON DME and hold.
<p>▼ Circling Rwy 18, 36 NA at night. Rwy 30 helicopter visibility reduction below 3/4 SM NA. For uncompensated Baro-VNAV systems, LNAV/VNAV NA below -17°C or above 54°C.</p>	

ASOS 118.125	MINNEAPOLIS CENTER 126.25 339.8	UNICOM 123.0 (CTAF) 0
------------------------	---	---------------------------------



NC-1, 08 SEP 2022 to 06 OCT 2022

NC-1, 08 SEP 2022 to 06 OCT 2022



- HIRL Rwy 12-30 0
- MIRL Rwy 18-36 0
- REIL Rws 18, 30 and 36 0