

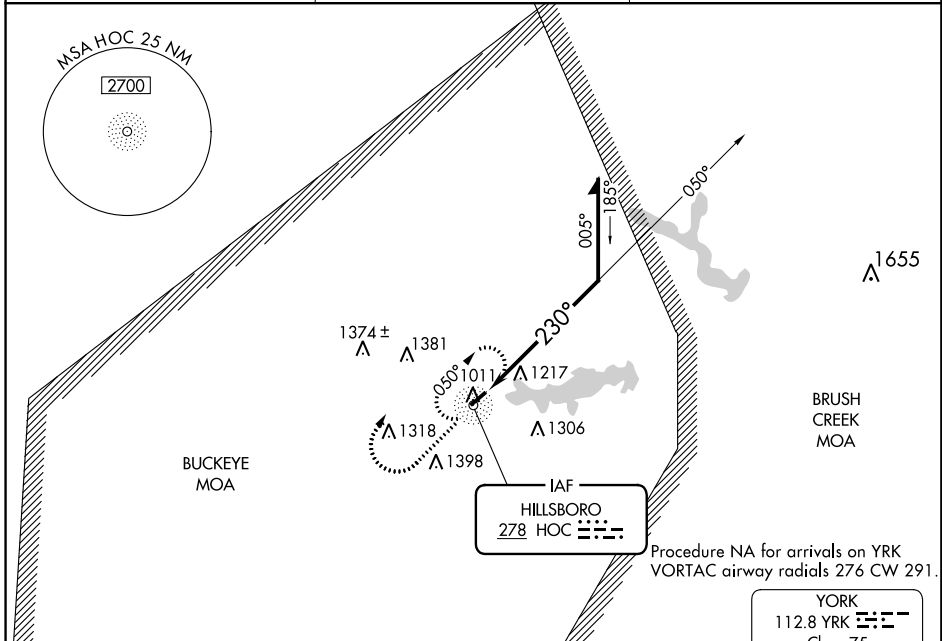
NDB HOC <b>278</b>	APP CRS <b>230°</b>	Rwy Idg TDZE Apt Elev	<b>3520</b> <b>969</b> <b>977</b>
-----------------------	------------------------	-----------------------------	---

**NDB RWY 23**  
HIGHLAND COUNTY (HOC)

**⚠ NA** When local altimeter setting not received; use Wilmington Air Park altimeter setting and increase all MDA 60 feet, and increase S-23/Circling Cat C visibility 1/2 mile. When VGSI inop; Straight-in/Circling Rwy 23 procedure NA at night. Circling to Rwy 05 NA at night.

**MISSED APPROACH:** Climb to 2800 then right turn direct HOC NDB and hold.

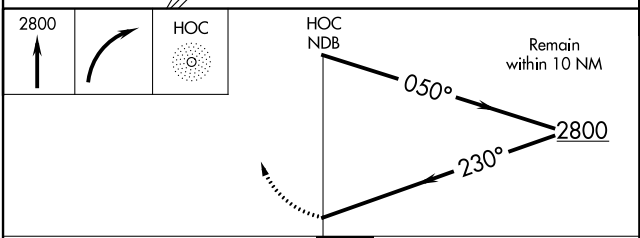
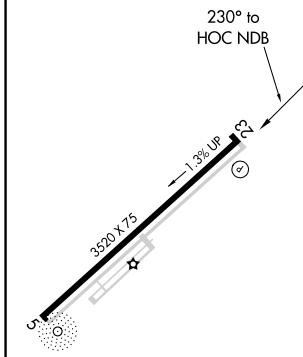
AWOS-3 <b>118.175</b>	INDIANAPOLIS CENTER <b>135.575 290.5</b>	UNICOM <b>123.05 (CTAF) 0</b>
--------------------------	---	----------------------------------



EC-2, 19 JUL 2018 to 16 AUG 2018

EC-2, 19 JUL 2018 to 16 AUG 2018

ELEV 977	TDZE 969
----------	----------



CATEGORY	A	B	C	D
S-23	1680-1 711 (800-1)	1680-1¼ 711 (800-1¼)	1680-2 711 (800-2)	NA
CIRCLING	1680-1 703 (800-1)	1680-1¼ 703 (800-1¼)	1680-2 703 (800-2)	NA

WAAS CH <b>97630</b> <b>W23A</b>	APP CRS <b>234°</b>	Rwy Idg TDZE <b>969</b> Apt Elev <b>977</b>	<b>3520</b>
--	------------------------	---	-------------

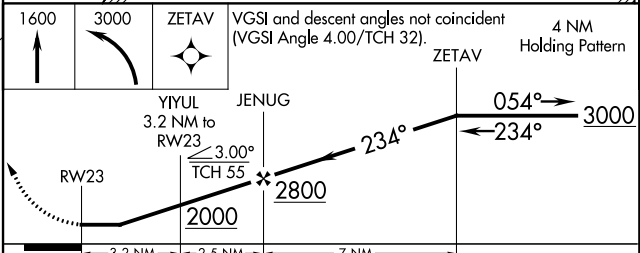
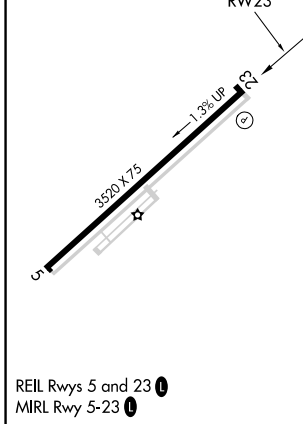
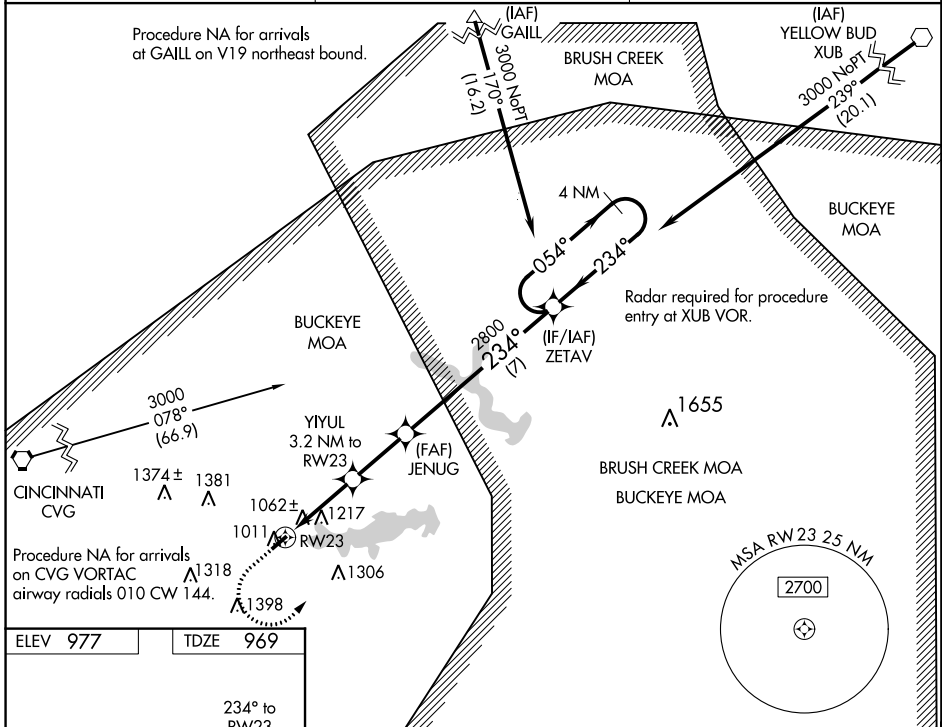
# RNAV (GPS) RWY 23

HIGHLAND COUNTY (HOC)

**⚠** DME/DME RNP-0.3 NA. Visibility reduction by helicopters NA. When local altimeter setting not received, use Wilmington Air Park altimeter setting and increase all MDA 60 feet; increase LNAV Cat C,D visibility 1/8 mile, increase LP Cat C,D visibility 1/4 mile, and increase Circling Cat C visibility 1/8 mile. When VGSi inop, Straight-in/Circling Rwy 23 procedure NA at night. Circling to Rwy 05 NA at night.

**MISSED APPROACH:** Climb to 1600 then climbing left turn to 3000 direct ZETAV and hold.

AWOS-3 <b>118.175</b>	INDIANAPOLIS CENTER <b>135.575 290.5</b>	UNICOM <b>123.05 (CTAF) 0</b>
--------------------------	---	----------------------------------



CATEGORY	A	B	C	D
LP MDA	1320-1	351 (400-1)	1320-1 1/8	351 (400-1 1/8)
LNAV MDA	1480-1	511 (600-1)	1480-1 1/8	511 (600-1 1/8)
CIRCLING	1500-1 523 (600-1)	1520-1 543 (600-1)	1520-1 1/8 543 (600-1 1/8)	1540-2 563 (600-2)

EC-2, 19 JUL 2018 to 16 AUG 2018

EC-2, 19 JUL 2018 to 16 AUG 2018