

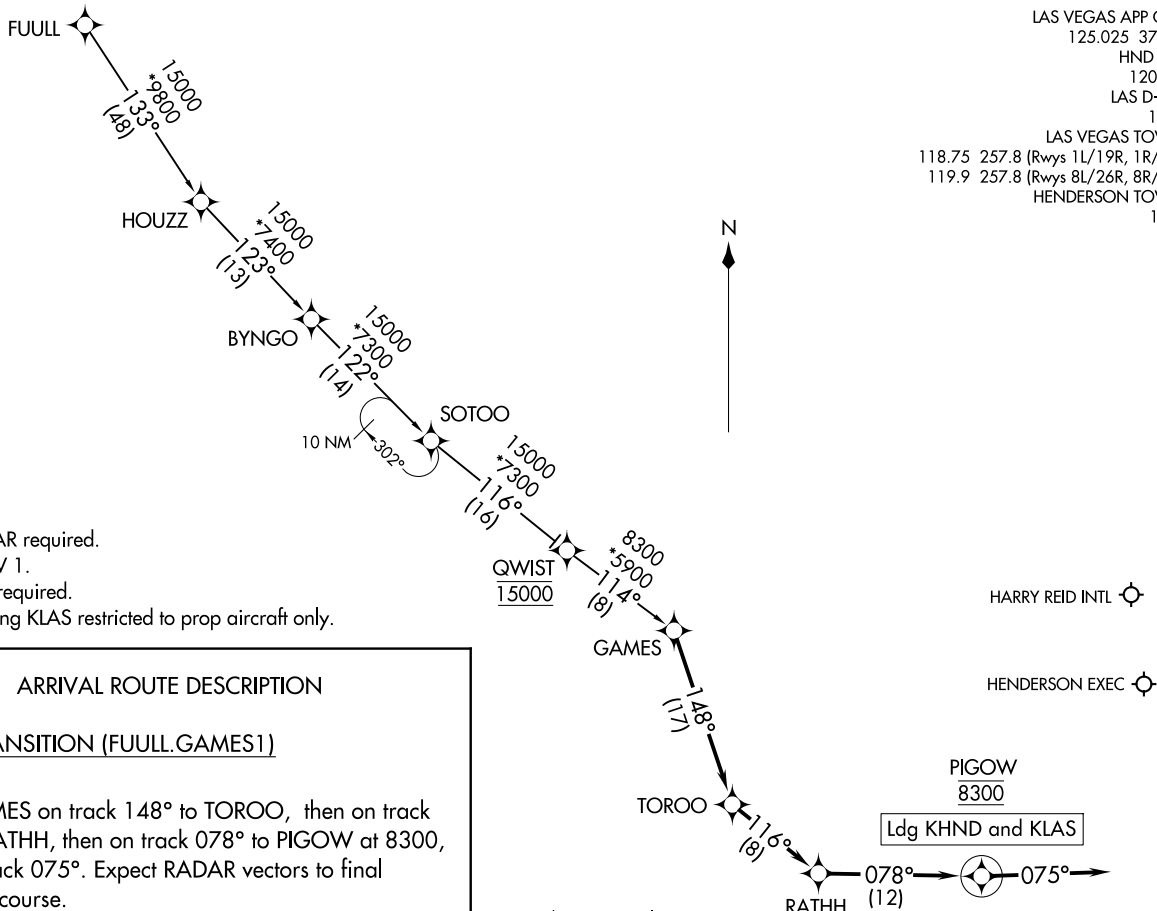
GAMES ONE ARRIVAL (RNAV)
 (GAMES.GAMES1) 25FEB21

(GAMES.GAMES1) 21168
 GAMES ONE ARRIVAL (RNAV)

AL-662 (FAA)

LAS VEGAS, NEVADA

LAS VEGAS APP CON
 125.025 379.15
 HND ATIS
 120.775
 LAS D-ATIS
 132.4
 LAS VEGAS TOWER
 118.75 257.8 (Rwys 1L/19R, 1R/19L)
 119.9 257.8 (Rwys 8L/26R, 8R/26L)
 HENDERSON TOWER*
 125.1



NOTE: RADAR required.
 NOTE: RNAV 1.
 NOTE: GPS required.
 NOTE: Landing KLAS restricted to prop aircraft only.

ARRIVAL ROUTE DESCRIPTION

FUULL TRANSITION (FUULL.GAMES1)

From GAMES on track 148° to TOROO, then on track 116° to RATHH, then on track 078° to PIGOW at 8300, then on track 075°. Expect RADAR vectors to final approach course.

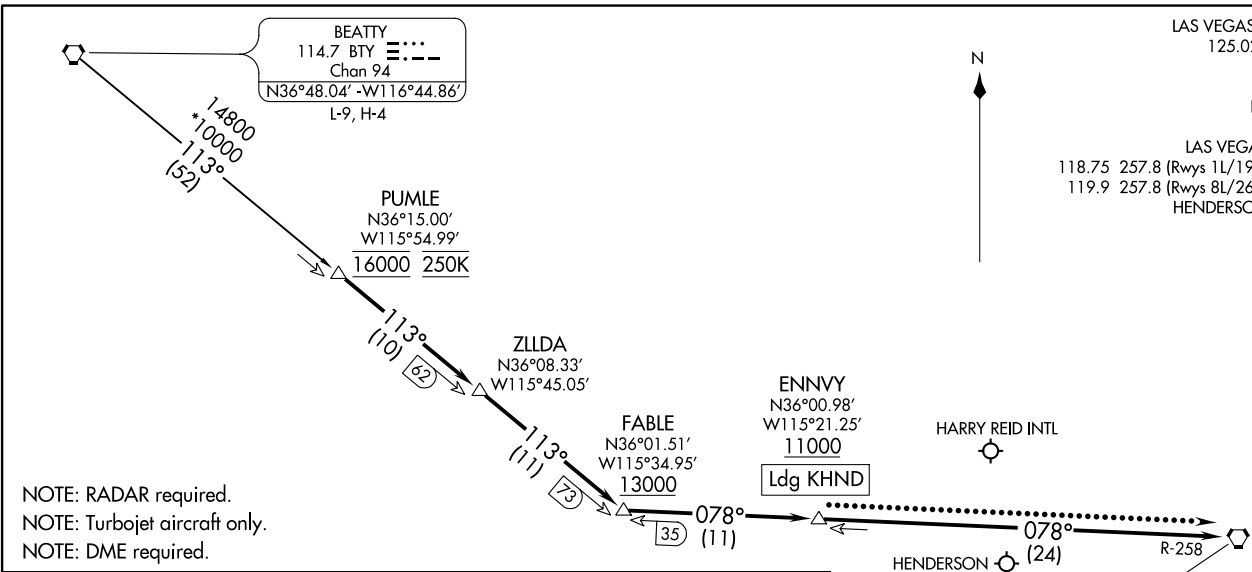
NOTE: Chart not to scale.

LAS VEGAS, NEVADA

PUMLE ONE ARRIVAL
(PUMLE:PUMLE1) 25FEB21

(PUMLE:PUMLE1) 21168
PUMLE ONE ARRIVAL

LAS VEGAS APP CON
125.025 379.15
HND ATIS
120.775
LAS D-ATIS
132.4
LAS VEGAS TOWER
118.75 257.8 (Rwys 1L/19R, 1R/19L)
119.9 257.8 (Rwys 8L/26R, 8R/26L)
HENDERSON TOWER*
125.1



NOTE: RADAR required.
NOTE: Turbojet aircraft only.
NOTE: DME required.

ARRIVAL ROUTE DESCRIPTION

BEATTY TRANSITION (BTY.PUMLE1): From over BTY VORTAC on BTY R-113 to PUMLE, thence. . . .

. . . . From PUMLE on BTY R-113 to cross FABLE at or above 13000, then on BLD R-258 to cross ENNVY at or above 11000, then to BLD VORTAC and cross at 8000. Thence. . . .

LANDING KLAS: From over BLD VORTAC expect RADAR vectors for all runways.

LANDING KHND: From over ENNVY expect RADAR vectors to airport.

LOST COMMUNICATIONS: After ENNVY proceed direct BLD VORTAC and hold. Maintain 8000 or last assigned altitude whichever is greater.

NOTE: Chart not to scale.

AL-662 (FAA)

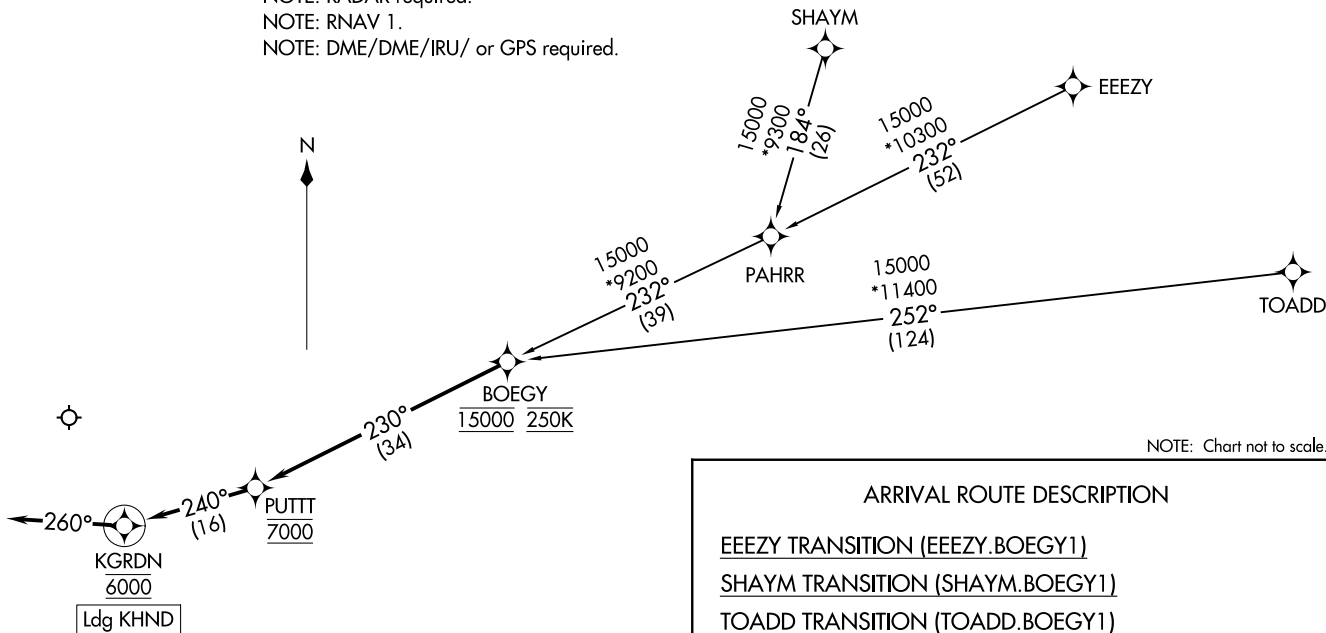
LAS VEGAS, NEVADA

LAS VEGAS, NEVADA

BOEGY ONE ARRIVAL (RNAV)
(BOEGY, BOEGY1) 25FEB21

LAS VEGAS APP CON
125.475 307.25
ATIS
120.775
HENDERSON TOWER ★
125.1

NOTE: RADAR required.
NOTE: RNAV 1.
NOTE: DME/DME/IRU/ or GPS required.



NOTE: Chart not to scale.

ARRIVAL ROUTE DESCRIPTION

- EEEZY TRANSITION (EEEZY.BOEGY1)
- SHAYM TRANSITION (SHAYM.BOEGY1)
- TOADD TRANSITION (TOADD.BOEGY1)

From BOEGY on track 230° to cross PUTTT at 7000, then on track 240° to cross KGRDN at 6000, then on track 260°. Expect RADAR vectors to final approach course.

(BOEGY, BOEGY1) 21336
BOEGY ONE ARRIVAL (RNAV) AL-6514 (FAA)

HENDERSON EXEC (HND)
LAS VEGAS, NEVADA

LAS VEGAS, NEVADA
HENDERSON EXEC (HND)

LAS VEGAS APP CON
 125.475 307.25
 HND ATIS
 120.775
 VGT ATIS
 118.05
 HENDERSON TOWER *
 125.1
 NORTH LAS VEGAS TOWER *
 125.7 360.75

NORTH LAS VEGAS

HENDERSON EXEC

NTND0
7000

Ldg KHND, KVGT

KEEKO
7200

KONNG
10000 250K

TETRS
13000

10000
*7900
291°
(46)

BYSEN
FL240

FL240
270°
(34)

GUILE

MISEN
13000
*6500
081°
(25)

LINCK

13000
*9200
064°
(41)

ZELMA
15000
13000
*7400
012°
(29)

JOTNU
15000
*6900
030°
(18)

TWENTYNINE PALMS
TNP

NOTE: RADAR required.
 NOTE: RNAV 1.
 NOTE: DME/DME/IRU/ or GPS required.
 NOTE: TNP transition: for non-GPS equipped aircraft
 IPL and TNP DMEs must be operational.

NOTE: Chart not to scale.

ARRIVAL ROUTE DESCRIPTION

GUILE TRANSITION (GUILE.NTND01)

MISEN TRANSITION (MISEN.NTND01)

TWENTYNINE PALMS TRANSITION (TNP.NTND01)

LANDING KHND/KVGT: From KONNG on track 328° to cross KEEKO at or above 7200, then on track 328° to cross NTND0 at 7000, then on track 304°. Expect RADAR vectors to final approach course.

SW-4, 02 DEC 2021 to 30 DEC 2021

SW-4, 02 DEC 2021 to 30 DEC 2021