

**DEPARTURE ROUTE DESCRIPTION**

**TAKEOFF RUNWAY 17R:** Climb on heading 168° to intercept course 199° to CAVER, then on track 160° to DAWNI, then on track 099° to CAPTA, then on track 073° to BAWLD, then on track 052° to cross ACSIN at or above 13000, thence. . . .

**TAKEOFF RUNWAY 35L:** Climb on heading 348° to intercept course 073° to cross KITEE at 6000, then on track 148° to JAMIA, then on track 082° to SCAMR, then on track 082° to cross ACSIN at or above 13000, thence. . . .

. . . .on assigned transition, maintain FL190, expect filed altitude 10 minutes after departure.

CIRQS TRANSITION (AC SIN5.CIRQS)

DOVE CREEK TRANSITION (AC SIN5.DVC)

VERKN TRANSITION (AC SIN5.VERKN)

**TOP ALTITUDE:  
FL190**

ATIS 120.775  
GND CON 127.8  
HENDERSON TOWER \* 125.1 (CTAF)  
LAS VEGAS DEP CON 118.4

NOTE: GPS required.  
NOTE: RNAV 1.  
NOTE: Do not exceed 200K until leaving 6000.

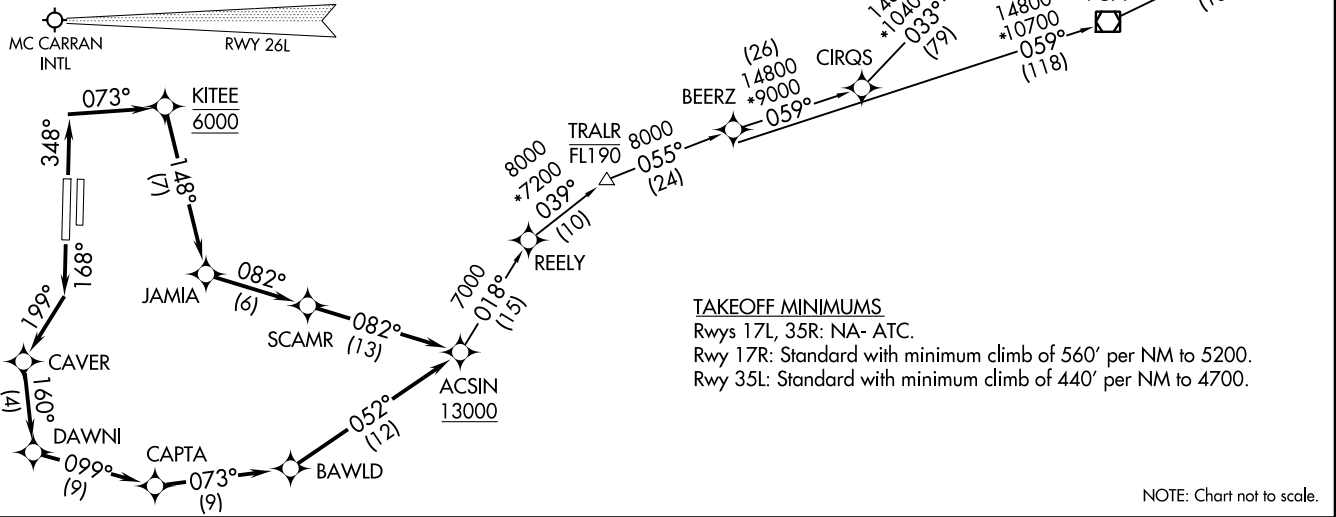


AC SIN FIVE DEPARTURE (RNAV)  
(AC SIN5.AC SIN) 07/DECI7

(AC SIN5.AC SIN) 17341  
AC SIN FIVE DEPARTURE (RNAV)

AL-6514 (FAA)

HENDERSON EXECUTIVE (HND)  
LAS VEGAS, NEVADA



TAKEOFF MINIMUMS

Rwys 17L, 35R: NA-ATC.

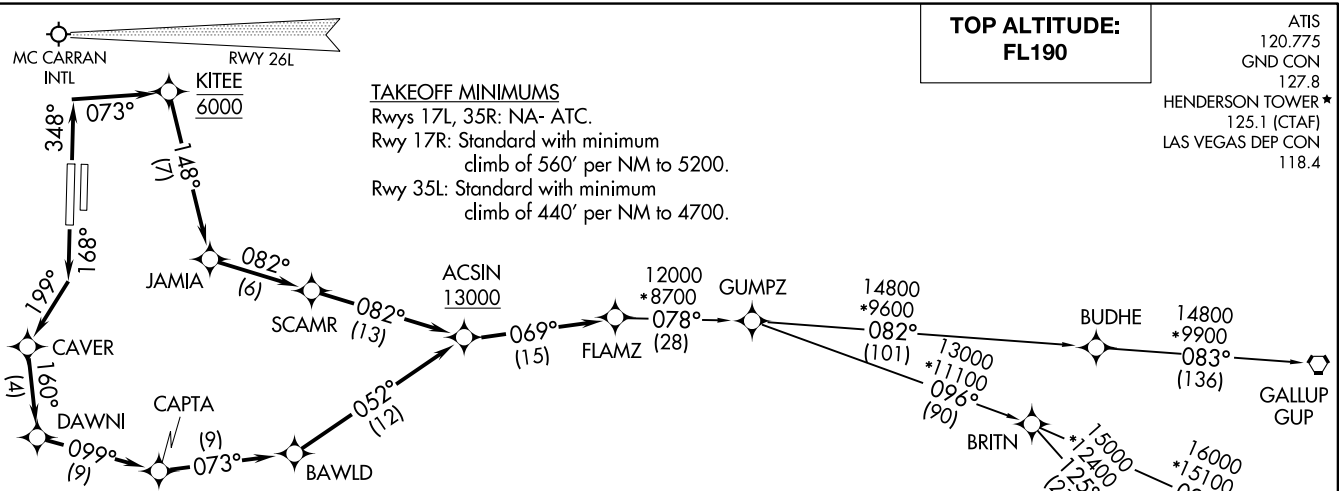
Rwy 17R: Standard with minimum climb of 560' per NM to 5200.

Rwy 35L: Standard with minimum climb of 440' per NM to 4700.

NOTE: Chart not to scale.

HENDERSON EXECUTIVE (HND)  
LAS VEGAS, NEVADA

FLAMZ FIVE DEPARTURE (RNAV)  
(FLAMZ5, FLAMZ) 07DEC17



**TOP ALTITUDE:  
FL190**

ATIS 120.775  
GND CON 127.8  
HENDERSON TOWER \* 125.1 (CTAF)  
LAS VEGAS DEP CON 118.4

**TAKEOFF MINIMUMS**  
Rwys 17L, 35R: NA- ATC.  
Rwy 17R: Standard with minimum climb of 560' per NM to 5200.  
Rwy 35L: Standard with minimum climb of 440' per NM to 4700.

(FLAMZ5, FLAMZ) 17341  
FLAMZ FIVE DEPARTURE (RNAV)

**DEPARTURE ROUTE DESCRIPTION**

**TAKEOFF RUNWAY 17R:** Climb heading 168° to intercept course 199° to CAVER, then on track 160° to DAWNI, then on track 099° to CAPTA, then on track 073° to BAWLD, then on track 052° to cross ACSIN at or above 13000, then on track 069° to FLAMZ, thence. . . .

**TAKEOFF RUNWAY 35L:** Climb heading 348° to intercept course 073° to cross KITEE at 6000, then on track 148° to JAMIA, then on track 082° to SCAMR, then on track 082° to cross ACSIN at or above 13000, then on track 069° to FLAMZ, thence. . . .

. . . .via transition. Maintain FL190, expect filed altitude 10 minutes after departure.

- FLAGSTAFF TRANSITION (FLAMZ5.FLG)
- GALLUP TRANSITION (FLAMZ5.GUP)
- WINSLOW TRANSITION (FLAMZ5.INW)

NOTE: GPS required.  
NOTE: RNAV 1.



NOTE: Chart not to scale.

AL-6514 (FAA)

HENDERSON EXECUTIVE (HND)  
LAS VEGAS, NEVADA

LAS VEGAS, NEVADA  
HENDERSON EXECUTIVE (HND)

(PALLY5.PALLY) 17341

# PALLY FIVE DEPARTURE (RNAV)

AL-6514 (FAA)

HENDERSON EXECUTIVE (HND)  
LAS VEGAS, NEVADA

**TOP ALTITUDE:  
FL190**

MC CARRAN INTL



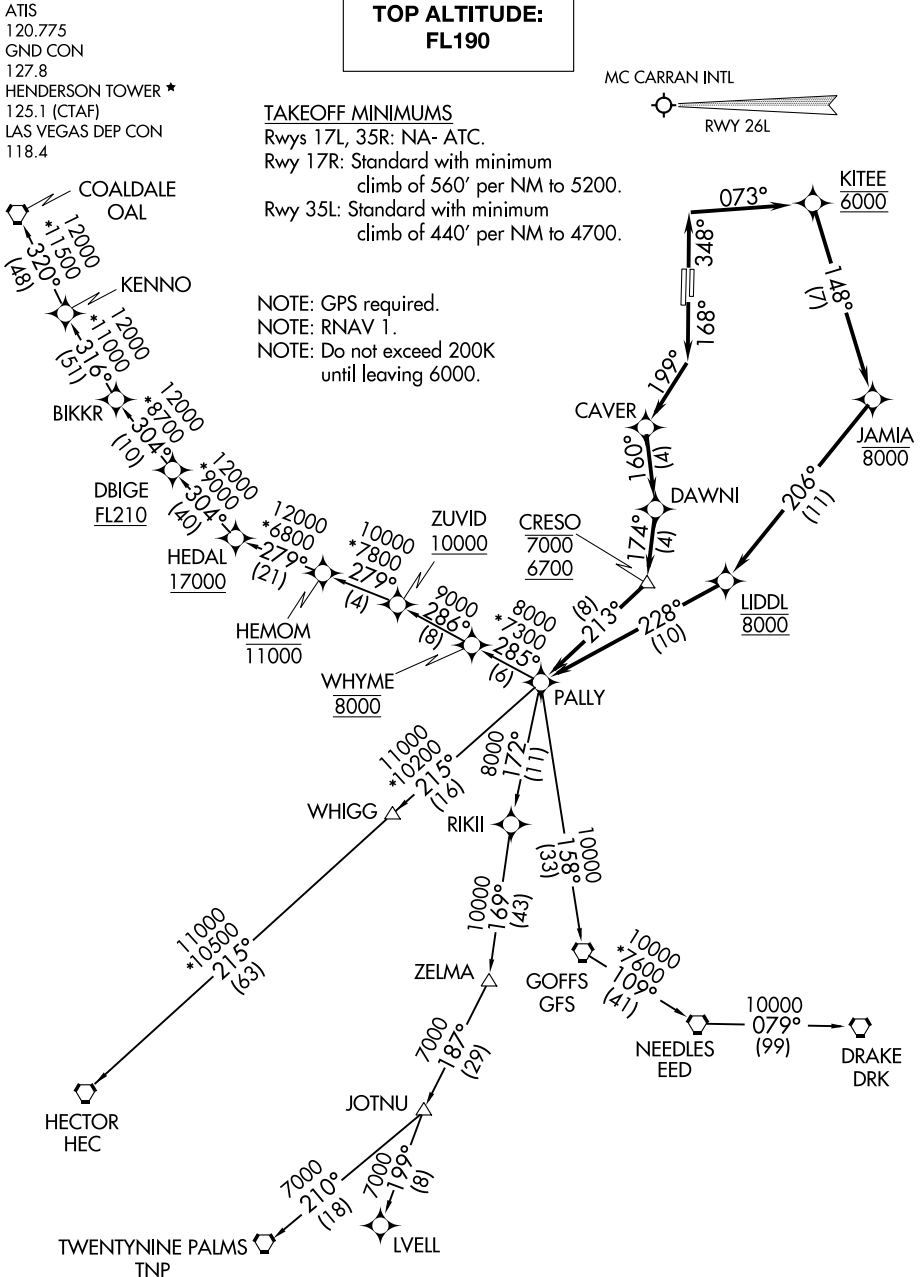
### TAKEOFF MINIMUMS

Rwys 17L, 35R: NA- ATC.

Rwy 17R: Standard with minimum climb of 560' per NM to 5200.

Rwy 35L: Standard with minimum climb of 440' per NM to 4700.

NOTE: GPS required.  
NOTE: RNAV 1.  
NOTE: Do not exceed 200K until leaving 6000.



SW-4, 29 MAR 2018 to 26 APR 2018

SW-4, 29 MAR 2018 to 26 APR 2018

(NARRATIVE ON FOLLOWING PAGE)

NOTE: Chart not to scale.

# PALLY FIVE DEPARTURE (RNAV)

(PALLY5.PALLY) 07DEC17

LAS VEGAS, NEVADA  
HENDERSON EXECUTIVE (HND)



DEPARTURE ROUTE DESCRIPTION

TAKEOFF RUNWAY 17R: Climb on heading 168° to intercept course 199° to CAVER, then on track 160° to DAWNII, then on track 174° to cross CRESO at or below 7000 and at or above 6700, then on track 213° to PALLY, thence. . . .

TAKEOFF RUNWAY 35L: Climb on heading 348° to intercept course 073° to cross KITEE at 6000, then on track 148° to cross JAMIA at or below 8000, then on track 206° to cross LIDDL at 8000, then on track 228° to PALLY, thence. . . .

. . . .on assigned transition, maintain FL190, expect filed altitude 10 minutes after departure.

COALDALE TRANSITION (PALLY5.OAL)

DRAKE TRANSITION (PALLY5.DRK)

HECTOR TRANSITION (PALLY5.HEC)

KENNO TRANSITION (PALLY5.KENNO)

LVELL TRANSITION (PALLY5.LVELL)

RIKII TRANSITION (PALLY5.RIKII)

TWENTYNINE PALMS TRANSITION (PALLY5.TNP)

WHIGG TRANSITION (PALLY5.WHIGG)

SW-4, 29 MAR 2018 to 26 APR 2018

SW-4, 29 MAR 2018 to 26 APR 2018