

WAAS CH 86815 W27A	APP CRS 271°	Rwy Idg TDZE Apt Elev	5000 529 529
--	------------------------	-----------------------------	---

RNAV (GPS) RWY 27

HUNTINGBURG (HNB)

⚠ For uncompensated Baro-VNAV systems, LNAV/VNAV NA below -16°C (4°F) or above 47°C (116°F). DME/DME RNP-0.3 NA.
⚠ VDP and Baro-VNAV NA when using Evansville altimeter setting. When local altimeter setting not received, use Evansville altimeter setting and increase all DA 85 feet and all MDA 100 feet, increase LPV and LNAV/VNAV all Cats and LNAV Cats C and D visibility ¼ mile.

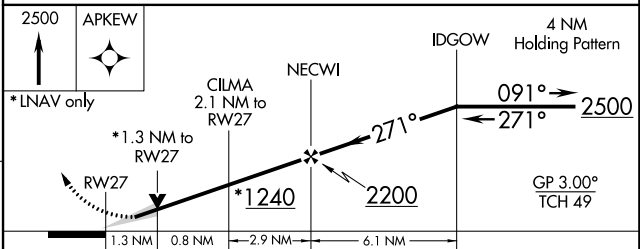
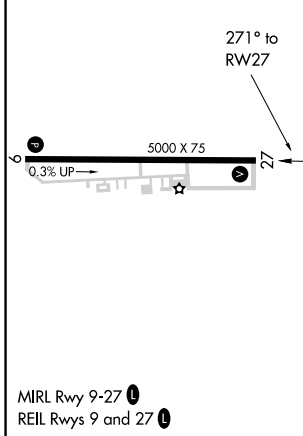
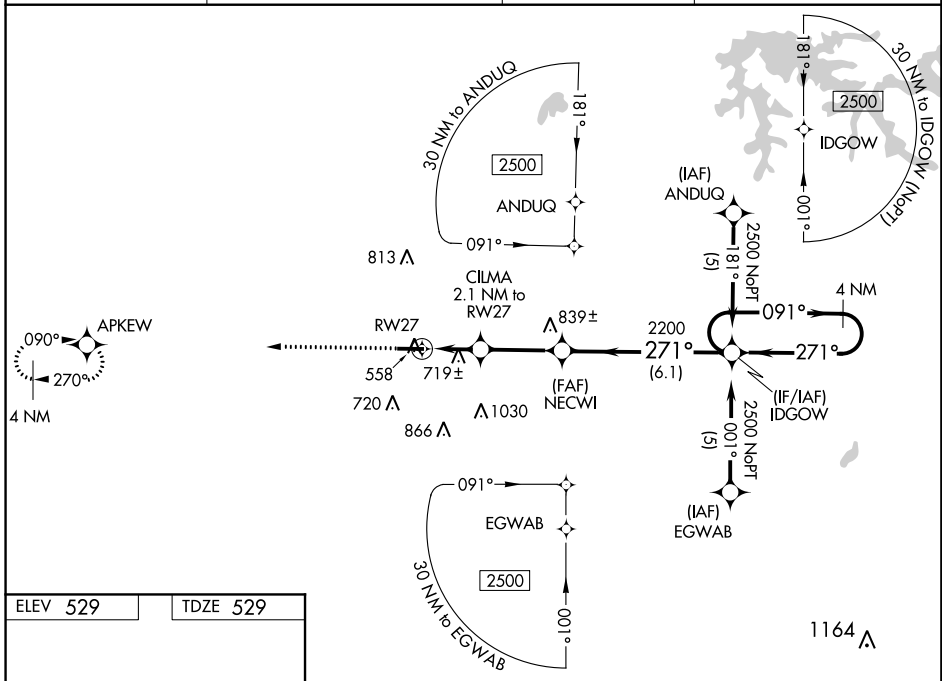
MISSED APPROACH: Climb to 2500 direct APKEW and hold.

AWOS-3PT
118.250

EVANSVILLE APP CON ★
124.025 290.9

CLNC DEL
118.8

UNICOM
122.8 (CTAF) 0



CATEGORY	A	B	C	D
LPV DA	812-1		283 (300-1)	
LNAV/VNAV DA	1038-1¾ 509 (600-1¾)			
LNAV MDA	980-1	451 (500-1)	980-1¼ 451 (500-1¼)	980-1½ 451 (500-1½)
CIRCLING	1000-1 471 (500-1)	1020-1 491 (500-1)	1020-1½ 491 (500-1½)	1080-2 551 (600-2)

EC-2: 01 FEB 2018 to 01 MAR 2018

EC-2: 01 FEB 2018 to 01 MAR 2018

WAAS CH 49207 W09A	APP CRS 091°	Rwy Idg TDZE Apt Elev	5000 524 529
--	------------------------	-----------------------------	---

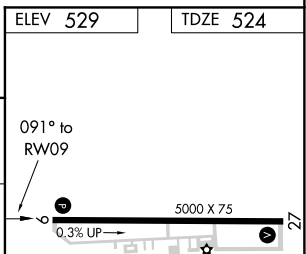
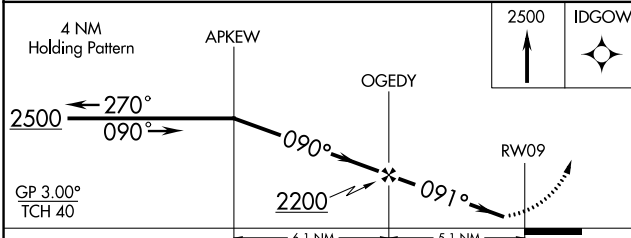
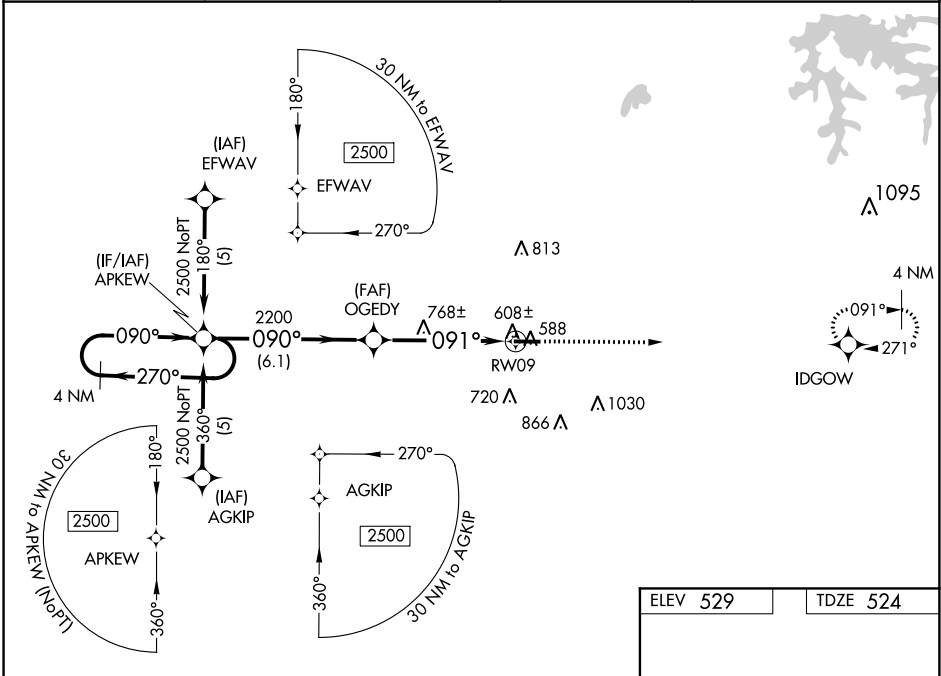
RNAV (GPS) RWY 9

HUNTINGBURG (HNB)

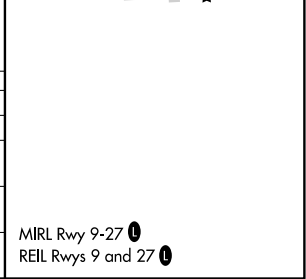
⚠ For uncompensated Baro-VNAV systems, LNAV/VNAV NA below -16°C (4°F) or above 47°C (116°F). DME/DME RNP-0.3 NA. Visibility reduction by helicopters NA.
⚠ Baro-VNAV NA when using Evansville altimeter setting.
 When local altimeter setting not received, use Evansville altimeter setting and increase all DA 85 feet and all MDA 100 feet, increase LPV and LNAV/VNAV all Cats, and LNAV Cats C and D visibility ¼ mile.

MISSED APPROACH: Climb to 2500 direct IDGOW and hold.

AWOS-3PT 118.250	EVANSVILLE APP CON ★ 124.025 290.9	CLNC DEL 118.8	UNICOM 122.8 (CTAF) 0
----------------------------	--	--------------------------	---------------------------------



CATEGORY	A	B	C	D
LPV DA		845-1¼	321 (400-1¼)	
LNAV/VNAV DA		878-1¼	354 (400-1¼)	
LNAV MDA	1020-1	496 (500-1)	1020-1¼ 496 (500-1¼)	1020-1½ 496 (500-1½)
CIRCLING	1020-1	491 (500-1)	1020-1½ 491 (500-1½)	1080-2 551 (600-2)



EC-2. 01 FEB 2018 to 01 MAR 2018

EC-2. 01 FEB 2018 to 01 MAR 2018