

WAAS CH <b>86815</b> <b>W27A</b>	APP CRS <b>271°</b>	Rwy Idg TDZE Apt Elev	<b>5000</b> <b>529</b> <b>529</b>
--	------------------------	-----------------------------	---

# RNAV (GPS) RWY 27

HUNTINGBURG (HNB)

**⚠** For uncompensated Baro-VNAV systems, LNAV/VNAV NA below -16°C (4°F) or above 47°C (116°F). DME/DME RNP-0.3 NA.  
**⚠** VDP and Baro-VNAV NA when using Evansville altimeter setting. When local altimeter setting not received, use Evansville altimeter setting and increase all DA 85 feet and all MDA 100 feet, increase LPV and LNAV/VNAV all Cats and LNAV Cats C and D visibility ¼ mile.

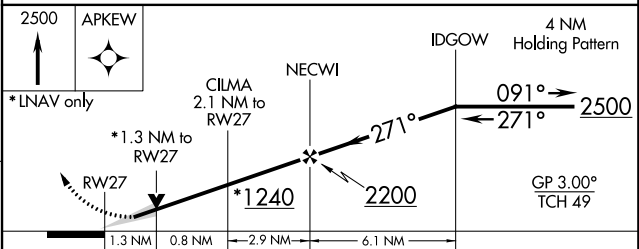
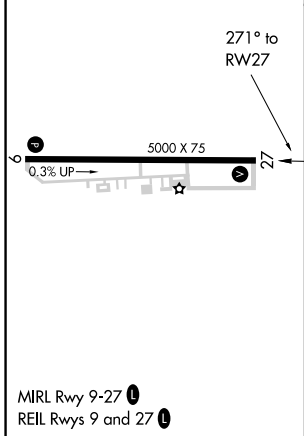
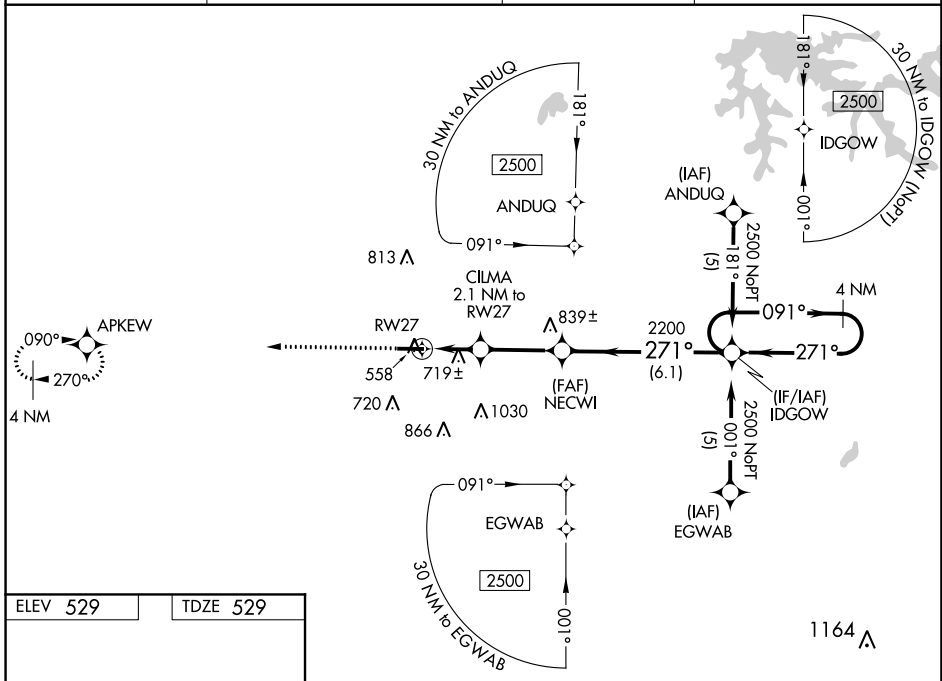
MISSED APPROACH: Climb to 2500 direct APKEW and hold.

AWOS-3PT  
**118.250**

EVANSVILLE APP CON ★  
**124.025 290.9**

CLNC DEL  
**118.8**

UNICOM  
**122.8 (CTAF) 0**



CATEGORY	A	B	C	D
LPV DA	812-1 283 (300-1)			
LNAV/VNAV DA	1038-1¼ 509 (600-1¼)			
LNAV MDA	980-1	451 (500-1)	980-1¼ 451 (500-1¼)	980-1½ 451 (500-1½)
CIRCLING	1000-1 471 (500-1)	1020-1 491 (500-1)	1020-1½ 491 (500-1½)	1080-2 551 (600-2)

WAAS CH <b>49207</b> <b>W09A</b>	APP CRS <b>091°</b>	Rwy Idg TDZE Apt Elev	<b>5000</b> <b>524</b> <b>529</b>
--	------------------------	-----------------------------	---

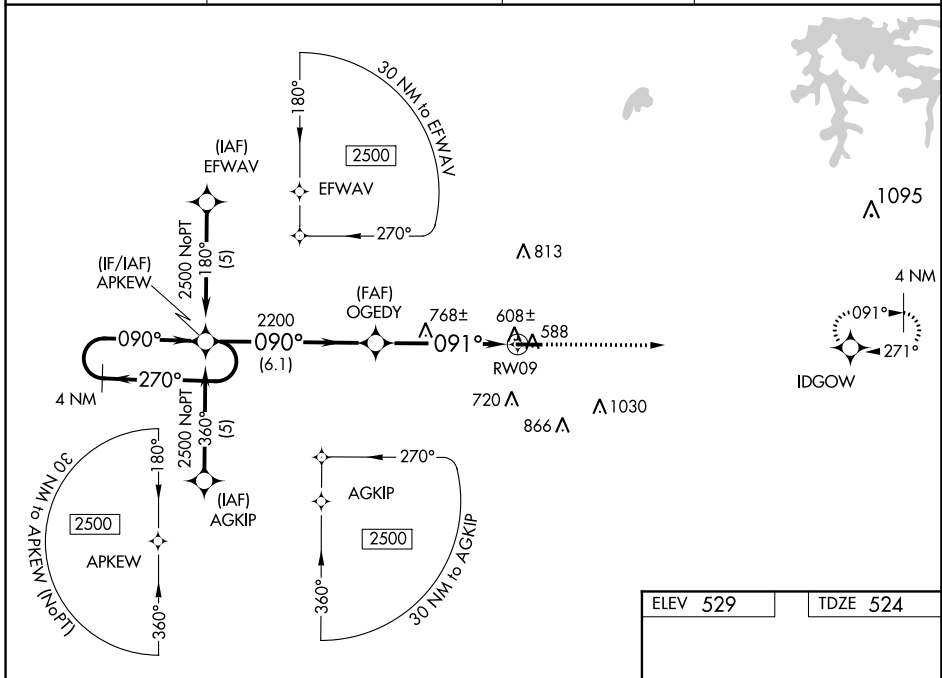
# RNAV (GPS) RWY 9

HUNTINGBURG (HNB)

**⚠** For uncompensated Baro-VNAV systems, LNAV/VNAV NA below -16°C (4°F) or above 47°C (116°F). DME/DME RNP-0.3 NA. Visibility reduction by helicopters NA.  
**⚠** Baro-VNAV NA when using Evansville altimeter setting.  
 When local altimeter setting not received, use Evansville altimeter setting and increase all DA 85 feet and all MDA 100 feet, increase LPV and LNAV/VNAV all Cats, and LNAV Cats C and D visibility ¼ mile.

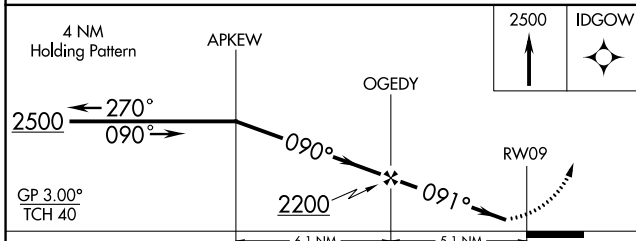
MISSED APPROACH: Climb to 2500 direct IDGOW and hold.

AWOS-3PT <b>118.250</b>	EVANSVILLE APP CON ★ <b>124.025 290.9</b>	CLNC DEL <b>118.8</b>	UNICOM <b>122.8 (CTAF) 0</b>
----------------------------	--	--------------------------	---------------------------------

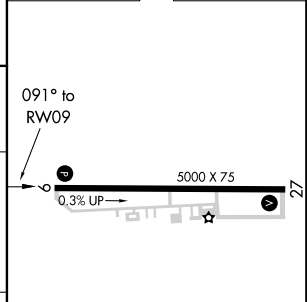


EC-2, 04 JAN 2018 to 01 FEB 2018

EC-2, 04 JAN 2018 to 01 FEB 2018



ELEV 529	TDZE 524
----------	----------



CATEGORY	A	B	C	D
LPV DA		845-1¼	321 (400-1¼)	
LNAV/VNAV DA		878-1¼	354 (400-1¼)	
LNAV MDA	1020-1	496 (500-1)	1020-1¼	1020-1½
			496 (500-1¼)	496 (500-1½)
CIRCLING	1020-1	491 (500-1)	1020-1½	1080-2
			491 (500-1½)	551 (600-2)

MIRL Rwy 9-27 0  
REIL Rwy 9 and 27 0



NAME ALTERNATE MINIMUMS

**CIRCLEVILLE, OH**

PICKAWAY COUNTY  
MEMORIAL (CYO).....RNAV (GPS) Rwy 1  
RNAV (GPS) Rwy 19  
VOR Rwy 19

NA when local weather not available.

**CLEVELAND, OH**

BURKE  
LAKEFRONT (BKL)..... ILS or LOC Rwy 24R  
NA when control tower closed.

CLEVELAND -  
HOPKINS INTL (CLE).....ILS or LOC Rwy 6L  
ILS or LOC Rwy 6R  
ILS or LOC Rwy 24L  
ILS or LOC Rwy 24R  
ILS or LOC Rwy 28

ILS, Categories A, B, C, D, 700-2.

CUYAHOGA  
COUNTY (CGF).....ILS or LOC Rwy 24  
RNAV (GPS) Rwy 6  
RNAV (GPS) Rwy 24

NA when local weather not available.

**COLUMBUS, IN**

COLUMBUS MUNI (BAK).....ILS Rwy 23<sup>1</sup>  
RNAV (GPS) Rwy 5<sup>2</sup>  
RNAV (GPS) Rwy 14<sup>2</sup>  
RNAV (GPS) Rwy 23<sup>2</sup>  
RNAV (GPS) Rwy 32<sup>2</sup>

<sup>1</sup>NA when control tower closed.

<sup>2</sup>NA when local weather not available.

**COLUMBUS, OH**

BOLTON FIELD (TZR).....ILS or LOC Rwy 4<sup>1</sup>  
NDB Rwy 4<sup>1</sup>  
RNAV (GPS) Rwy 4  
RNAV (GPS) Rwy 22

NA when local weather not available.

<sup>1</sup>NA when control tower closed.

NAME ALTERNATE MINIMUMS

**COLUMBUS, OH (CON'T)**

JOHN GLENN COLUMBUS  
INTL (CMH).....ILS or LOC Rwy 10L<sup>1</sup>  
ILS or LOC Rwy 10R<sup>2</sup>  
ILS or LOC Rwy 28L<sup>4</sup>  
ILS or LOC Rwy 28R<sup>2</sup>  
RNAV (GPS) Y Rwy 10L<sup>5</sup>  
RNAV (GPS) Y Rwy 10R<sup>5</sup>  
RNAV (GPS) Y Rwy 28L<sup>3</sup>  
RNAV (GPS) Y Rwy 28R<sup>5</sup>

<sup>1</sup>ILS, LOC, Categories A, B, 900-2; Category C, 900-2 $\frac{3}{4}$ ; Category D, 900-3.

<sup>2</sup>ILS, Categories A, B, 700-2; Category C, 800-2; Category D, 800-2 $\frac{1}{4}$ ; LOC, Category D, 800-2 $\frac{1}{4}$ .

<sup>3</sup>Category D, 800-2 $\frac{3}{4}$ .

<sup>4</sup>ILS, Categories A, B, 800-2; Category C, 800-2 $\frac{1}{4}$ ; Category D, 800-2 $\frac{1}{2}$ ; LOC Category C, 800-2 $\frac{1}{4}$ ; Category D, 800-2 $\frac{1}{2}$ .

<sup>5</sup>Category D, 800-2 $\frac{1}{4}$ .

OHIO STATE  
UNIVERSITY (OSU).....ILS or LOC Rwy 9R<sup>1</sup>  
NDB Rwy 9R<sup>1</sup>  
RNAV (GPS) Rwy 9R  
RNAV (GPS) Rwy 27L

NA when local weather not available.

<sup>1</sup>NA when control tower closed.

RICKENBACKER  
INTL (LCK).....ILS or LOC Rwy 5L  
ILS or LOC Rwy 5R  
ILS or LOC Rwy 23L  
RNAV (GPS) Rwy 5L  
RNAV (GPS) Rwy 5R  
RNAV (GPS) Rwy 23L  
RNAV (GPS) Rwy 23R

NA when local weather not available.

**CRAWFORDSVILLE, IN**

CRAWFORDSVILLE  
MUNI (CFJ).....RNAV (GPS) Rwy 4  
RNAV (GPS) Rwy 22

NA when local weather not available.

Category D, 800-2 $\frac{1}{4}$ .

**DAYTON, OH**

DAYTON-WRIGHT  
BROTHERS (MGY).....RNAV (GPS) Rwy 2  
RNAV (GPS) Rwy 20

NA when local weather not available.

Category D, 800-2 $\frac{1}{4}$ .

04 JAN 2018 to 01 FEB 2018

04 JAN 2018 to 01 FEB 2018

NAME ALTERNATE MINIMUMS

**DAYTON, OH (CON'T)**

JAMES M COX DAYTON  
INTL (DAY).....**ILS or LOC Rwy 6L**  
**ILS or LOC Rwy 24L**  
**ILS or LOC Rwy 24R**

ILS, Category D, 700-2.

**DEFIANCE, OH**

DEFIANCE  
MEMORIAL (DFI).....**RNAV (GPS) Rwy 12**  
NA when local weather not available.

**ELKHART, IN**

ELKHART MUNI (EKM).....**ILS or LOC Rwy 27<sup>1</sup>**  
**RNAV (GPS) Rwy 9<sup>2</sup>**  
**RNAV (GPS) Rwy 18<sup>2</sup>**  
**RNAV (GPS) Rwy 27<sup>2</sup>**  
**RNAV (GPS) Rwy 36<sup>2</sup>**  
**VOR Rwy 9<sup>2</sup>**

<sup>1</sup>ILS, NA when control tower closed. LOC, NA.

<sup>2</sup>NA when local weather not available.

**EVANSVILLE, IN**

EVANSVILLE  
RGNL (EVV).....**ILS or LOC Rwy 4<sup>1</sup>**  
**ILS or LOC Rwy 22<sup>2</sup>**  
**VOR Rwy 4**

NA when control tower closed.

<sup>1</sup>ILS, Categories A, B, 800-2; Category C, D, 800-2½;

<sup>2</sup>Categories A, B, C, D, 700-2.

**FINDLAY, OH**

FINDLAY (FDY).....**RNAV (GPS) Rwy 7**  
**RNAV (GPS) Rwy 18**  
**NAV (GPS) Rwy 25**  
**RNAV (GPS) Rwy 36**  
**VOR Rwy 7**

NA when local weather not available.

NAME ALTERNATE MINIMUMS

**FORT WAYNE, IN**

FORT WAYNE  
INTL (FWA).....**ILS or LOC Rwy 5<sup>1</sup>**  
**ILS or LOC Rwy 32<sup>1</sup>**  
**RADAR-1<sup>2</sup>**  
**RNAV (GPS) Rwy 5<sup>2</sup>**  
**RNAV (GPS) Rwy 14<sup>3</sup>**  
**RNAV (GPS) Rwy 23<sup>2</sup>**  
**RNAV (GPS) Rwy 32<sup>3</sup>**  
**VOR or TACAN Rwy 5<sup>4</sup>**  
**VOR or TACAN Rwy 14<sup>4</sup>**  
**VOR or TACAN Rwy 23<sup>2</sup>**

<sup>1</sup>ILS, Category C, 700-2; Category D, 800-2¼;

Category E, 800-2½; LOC, Category D, 800-2¼; Category E, 800-2½.

<sup>2</sup>Category D, 800-2¼, Category E, 800-2½.

<sup>3</sup>Category D, 800-2¼.

<sup>4</sup>Category E, 800-2½.

**FOSTORIA, OH**

FOSTORIA  
METROPOLITAN (FZI).....**RNAV (GPS) Rwy 9**  
NA when local weather not available.

**GARY, IN**

GARY/CHICAGO  
INTL (GYY).....**COPTER ILS or LOC Rwy 30<sup>1</sup>**  
**ILS or LOC Rwy 30<sup>14</sup>**  
**RNAV (GPS) Rwy 2<sup>23</sup>**  
**RNAV (GPS) Y Rwy 12<sup>23</sup>**  
**RNAV (GPS) Y Rwy 30<sup>23</sup>**  
**RNAV (GPS) Z Rwy 30<sup>2</sup>**

<sup>1</sup>NA when control tower closed.

<sup>2</sup>NA when local weather not available.

<sup>3</sup>Category C, 900-2¼; Category D, 900-2¾.

<sup>4</sup>ILS Categories A, B, 700-2; Category C, 900-2¼; Category D, 900-2¾; LOC Category C, 900-2¼; Category D, 900-2¾.

**GOSHEN, IN**

GOSHEN MUNI (GSH).....**RNAV (GPS) Rwy 9**  
**RNAV (GPS) Rwy 27**  
NA when local weather not available.

**HAMILTON, OH**

BUTLER COUNTY  
RGNL (HAO).....**ILS or LOC Rwy 29<sup>1</sup>**  
**RNAV (GPS) Rwy 11<sup>2</sup>**  
**RNAV (GPS) Rwy 29<sup>2</sup>**

NA when local weather not available.

<sup>1</sup>ILS, LOC, Categories A, B, 900-2; Category C, D, 900-2½.

<sup>2</sup>Category D, 800-2¼.

04 JAN 2018 to 01 FEB 2018

04 JAN 2018 to 01 FEB 2018

NAME ALTERNATE MINIMUMS

**HUNTINGBURG, IN**

HUNTINGBURG (HNB).....RNAV (GPS) Rwy 9  
RNAV (GPS) Rwy 27

NA when local weather not available.

**HUNTINGTON, IN**

HUNTINGTON  
MUNI (HHG).....NDB Rwy 9<sup>12</sup>  
RNAV (GPS) Rwy 9<sup>2</sup>  
RNAV (GPS) Rwy 27<sup>2</sup>  
VOR-A<sup>2</sup>

<sup>1</sup>NA when FBO closed.

<sup>2</sup>Category D, 800-2½.

**INDIANAPOLIS, IN**

EAGLE CREEK  
AIRPARK (EYE).....RNAV (GPS) Rwy 21  
VOR-A

NA when local weather not available.

INDIANAPOLIS

EXECUTIVE (TYQ).....RNAV (GPS) Rwy 18  
VOR Rwy 18

NA when local weather not available.

INDIANAPOLIS

INTL (IND).....ILS or LOC Rwy 5L<sup>1</sup>  
ILS or LOC Rwy 5R<sup>1</sup>  
ILS or LOC Rwy 14<sup>1</sup>  
ILS or LOC Rwy 23L<sup>1</sup>  
ILS or LOC Rwy 23R<sup>1</sup>  
ILS or LOC Rwy 32<sup>1</sup>  
RNAV (GPS) Y Rwy 5L<sup>2</sup>  
RNAV (GPS) Y Rwy 5R<sup>2</sup>  
RNAV (GPS) Y Rwy 14<sup>2</sup>  
RNAV (GPS) Y Rwy 23L<sup>2</sup>  
RNAV (GPS) Y Rwy 23R<sup>2</sup>  
RNAV (GPS) Y Rwy 32<sup>2</sup>

<sup>1</sup>ILS Categories A, B, C, 700-2; Category D, 800-2½; LOC Category D, 800-2½.

<sup>2</sup>Category D, 800-2½.

INDIANAPOLIS

RGNL (MQJ).....RNAV (GPS) Rwy 25  
NA when local weather not available.  
Category D, 800-2½.

INDY SOUTH

GREENWOOD (HFY).....RNAV (GPS) Rwy 1  
Category D, 1100-3.

**JEFFERSONVILLE, IN**

CLARK RGNL (JVY).....RNAV (GPS) Rwy 18  
NA when local weather not available.

NAME ALTERNATE MINIMUMS

**KENDALLVILLE, IN**

KENDALLVILLE  
MUNI (C62).....RNAV (GPS) Rwy 10  
RNAV (GPS) Rwy 28

NA when local weather not available.

**KNOX, IN**

STARKE COUNTY (OXI).....RNAV (GPS) Rwy 18  
VOR Rwy 18<sup>1</sup>

NA when local weather not available.

<sup>1</sup>Category D, 800-2½.

**KOKOMO, IN**

KOKOMO MUNI (OKK).....ILS or LOC Rwy 13  
RNAV (GPS) Rwy 5<sup>12</sup>  
RNAV (GPS) Rwy 14<sup>12</sup>  
RNAV (GPS) Rwy 23<sup>12</sup>  
RNAV (GPS) Rwy 32<sup>12</sup>  
VOR Rwy 32<sup>2</sup>

<sup>1</sup>NA when local weather not available.

<sup>2</sup>Category D, 900-2½.

<sup>3</sup>ILS, LOC, Category D, 900-2½.

**LAFAYETTE, IN**

PURDUE  
UNIVERSITY (LAF).....ILS or LOC Rwy 10<sup>1</sup>  
RNAV (GPS) Rwy 10<sup>34</sup>  
RNAV (GPS) Rwy 28<sup>34</sup>  
VOR-A<sup>25</sup>

<sup>1</sup>ILS, Category D, 800-2½. NA when control tower closed. LOC, NA.

<sup>2</sup>NA when control tower closed.

<sup>3</sup>Category D, 800-2½.

<sup>4</sup>NA when local weather not available.

<sup>5</sup>Category D, 800-2½.

**LANCASTER, OH**

FAIRFIELD  
COUNTY (LHQ).....RNAV (GPS) Rwy 2  
RNAV (GPS) Rwy 28

NA when local weather not available.

**LA PORTE, IN**

LA PORTE  
MUNI (PPO).....RNAV (GPS) Rwy 2  
RNAV (GPS) Rwy 20

NA when local weather not available.

Category C, 800-2½, Category D, 800-2½.

**LIMA, OH**

LIMA ALLEN  
COUNTY (AOH).....RNAV (GPS) Rwy 10  
RNAV (GPS) Rwy 28

NA when local weather not available.

04 JAN 2018 to 01 FEB 2018

04 JAN 2018 to 01 FEB 2018

NAME ALTERNATE MINIMUMS

**LOGANSPOUT, IN**

LOGANSPOUT/  
CASS COUNTY (GGP).....**VOR-A**  
NA when local weather not available.

**LORAIN/ELYRIA, OH**

LORAIN  
COUNTY RGNL (LPR).....**ILS or LOC Rwy 7<sup>1</sup>**  
**RNAV (GPS) Rwy 7**  
**VOR-A**

NA when local weather not available.  
<sup>1</sup>ILS, Categories C, D, 700-2.

**MADISON, IN**

MADISON MUNI (IMS).....**RNAV (GPS) Y Rwy 3**  
Category C, 1000-3.

**MANSFIELD, OH**

MANSFIELD  
LAHM RGNL (MFD).....**ILS or LOC Rwy 32<sup>13</sup>**  
**NDB Rwy 32<sup>1</sup>**  
**RADAR-1<sup>1</sup>**  
**RNAV (GPS) Rwy 5<sup>4</sup>**  
**RNAV (GPS) Rwy 14<sup>2</sup>**  
**RNAV (GPS) Rwy 23<sup>4</sup>**  
**RNAV (GPS) Rwy 32<sup>2</sup>**  
**VOR Rwy 14<sup>4</sup>**  
**VOR Rwy 32<sup>2</sup>**

<sup>1</sup>NA when control tower closed.  
<sup>2</sup>NA when local weather not available.  
<sup>3</sup>ILS, Category C, 800-2; Category D, 800-2¼;  
LOC, Category D, 800-2¼.  
<sup>4</sup>Category D, 800-2¼;

**MARION, IN**

MARION MUNI (MZZ).....**ILS or LOC Rwy 4**  
NA when local weather not available.

**MARION, OH**

MARION MUNI (MNN).....**RNAV (GPS) Rwy 7**  
**RNAV (GPS) Rwy 13**  
**RNAV (GPS) Rwy 25**  
**VOR-A**

NA when local weather not available.

**MARYSVILLE, OH**

UNION COUNTY (MRT).....**RNAV (GPS) Rwy 9**  
**RNAV (GPS) Rwy 27**  
NA when local weather not available.

**MIDDLETOWN, OH**

MIDDLETOWN REGIONAL/HOOK  
FIELD (MWO).....**NDB-A**  
**RNAV (GPS) Rwy 5<sup>1</sup>**  
**RNAV (GPS) Rwy 23<sup>1</sup>**

NA when local weather not available.  
<sup>1</sup>Category D, 1200-3.

NAME ALTERNATE MINIMUMS

**MOUNT VERNON, OH**

KNOX COUNTY (4I3).....**RNAV (GPS) Rwy 10**  
**RNAV (GPS) Rwy 28**  
**VOR-A**

NA when local weather not available.

**MONTICELLO, IN**

WHITE COUNTY (MCX).....**RNAV (GPS) Rwy 18**  
**RNAV (GPS) Rwy 36**

NA when local weather not available.  
Category C, 900-2½; Category D, 900-2¾.

**MUNCIE, IN**

DELAWARE  
COUNTY RGNL (MIE).....**ILS or LOC Rwy 32<sup>1</sup>**  
**RNAV (GPS) Rwy 3<sup>2</sup>**  
**RNAV (GPS) Rwy 14<sup>2</sup>**  
**RNAV (GPS) Rwy 20<sup>2</sup>**  
**RNAV (GPS) Rwy 21<sup>2</sup>**  
**RNAV (GPS) Rwy 32<sup>2</sup>**  
**VOR Rwy 14<sup>2</sup>**  
**VOR Rwy 20<sup>2</sup>**

<sup>1</sup>ILS, Category C, 700-2; Category D, 800-2½; LOC,  
Category D, 800-2½.  
<sup>2</sup>NA when local weather not available.

**NEW PHILADELPHIA, OH**

HARRY CLEVER  
FIELD (PHD).....**RNAV (GPS) Rwy 15<sup>1</sup>**  
**VOR-A<sup>23</sup>**

<sup>1</sup>Category C, 800-2¼.  
<sup>2</sup>Categories A, B, 900-2; Category C, 900-2½.  
<sup>3</sup>NA when local weather not available.

**NEWARK, OH**

NEWARK-HEATH (VTA).....**LOC Rwy 9<sup>1</sup>**  
**VOR-A<sup>2</sup>**  
**RNAV (GPS) Rwy 9<sup>3</sup>**  
**RNAV (GPS) Rwy 27<sup>4</sup>**

<sup>1</sup>Category D, 800-2¼.  
<sup>2</sup>Categories A, B, 1000-2; Categories C, D, 1000-3.  
<sup>3</sup>Category C, 900-2½; Category D, 900-2¾.  
<sup>4</sup>Categories A, B, 900-2; Category C, 900-2½;  
Category D, 900-2¾.

**PORT CLINTON, OH**

ERIE-OTTAWA  
INTL (PCW).....**RNAV (GPS) Rwy 9<sup>1</sup>**  
**RNAV (GPS) Rwy 27**

NA when local weather not available.  
<sup>1</sup>Category D, 1000-3.

04 JAN 2018 to 01 FEB 2018

04 JAN 2018 to 01 FEB 2018

## NAME ALTERNATE MINIMUMS

**RAVENNA, OH**

PORTAGE  
 COUNTY (POV).....RNAV (GPS) Rwy 9  
 RNAV (GPS) Rwy 27  
 VOR-A

NA when local weather not available.

**RENSELAER, IN**

JASPER  
 COUNTY (RZL).....RNAV (GPS) Rwy 18  
 RNAV (GPS) Rwy 36

NA when local weather not available.

**SHELBYVILLE, IN**

SHELBYVILLE  
 MUNI (GEZ).....RNAV (GPS) Rwy 1<sup>1</sup>  
 RNAV (GPS) Rwy 19<sup>1</sup>  
 VOR Rwy 19

<sup>1</sup>NA when local weather not available.  
 Category D, 800-2 $\frac{1}{4}$ .

**SOUTH BEND, IN**

SOUTH BEND  
 INTL (SBN).....ILS or LOC Rwy 9R<sup>1</sup>  
 ILS or LOC Rwy 27L<sup>1</sup>  
 RNAV (GPS) Rwy 36<sup>2</sup>  
 VOR Rwy 18<sup>1</sup>

<sup>1</sup>NA when control tower closed.  
<sup>2</sup>NA when local weather not available.

**SPRINGFIELD, OH**

SPRINGFIELD-BECKLEY  
 MUNI (SGH).....ILS or LOC Rwy 24<sup>12</sup>  
 RNAV (GPS) Rwy 6<sup>3</sup>  
 RNAV (GPS) Rwy 24<sup>3</sup>  
 VOR Rwy 6<sup>3</sup>

<sup>1</sup>NA when control tower closed.  
<sup>2</sup>ILS, LOC, Category E, 900-3.  
<sup>3</sup>NA when local weather not available.

**TERRE HAUTE, IN**

TERRE HAUTE INTL-  
 HULMAN FIELD (HUF).....ILS or LOC Rwy 5<sup>35</sup>  
 LOC BC Rwy 23<sup>1</sup>  
 RADAR-1<sup>24</sup>  
 RNAV (GPS) Rwy 5<sup>3</sup>  
 RNAV (GPS) Rwy 14<sup>3</sup>  
 RNAV (GPS) Rwy 23<sup>3</sup>  
 RNAV (GPS) Rwy 32<sup>3</sup>

<sup>1</sup>Category E, 800-2 $\frac{1}{4}$ .  
<sup>2</sup>NA when control tower closed.  
<sup>3</sup>NA when local weather not available.  
<sup>4</sup>Category D, 800-2 $\frac{1}{4}$ , Category E, 800-2 $\frac{1}{2}$ .  
<sup>5</sup>ILS, Category C, 700-2; Category D, 700-2 $\frac{1}{4}$ ;  
 LOC, Category D, 800-2 $\frac{1}{4}$ .

## NAME ALTERNATE MINIMUMS

**TOLEDO, OH**

TOLEDO  
 EXECUTIVE (TDZ).....RNAV (GPS) Rwy 4  
 RNAV (GPS) Rwy 32<sup>2</sup>  
 VOR Rwy 4<sup>1</sup>

NA when local weather not available.

<sup>1</sup>Categories A, B, 900-2; Category C, 900-2 $\frac{1}{2}$ ;  
 Category D, 900-2 $\frac{3}{4}$ .  
<sup>2</sup>Category D, 800-2 $\frac{1}{4}$ .

**TOLEDO**

EXPRESS (TOL).....ILS or LOC Rwy 7<sup>1</sup>  
 ILS or LOC Rwy 25<sup>23</sup>  
 RADAR-1<sup>4</sup>  
 RNAV (GPS) Rwy 7<sup>24</sup>  
 RNAV (GPS) Rwy 25<sup>4</sup>

<sup>1</sup>ILS, Category E, 800-2 $\frac{1}{2}$ .

<sup>2</sup>NA when local weather not available.

<sup>3</sup>ILS, Category C, 700-2; Category D, 800-2 $\frac{1}{4}$ ,  
 Category E, 800-2 $\frac{1}{2}$ ; LOC, Category D,  
 800-2  $\frac{1}{4}$ , Category E, 800-2 $\frac{1}{2}$ .

<sup>4</sup>Category E, 800-2 $\frac{1}{2}$ .

**URBANA, OH**

GRIMES FIELD (I74).....RNAV (GPS) Rwy 2  
 RNAV (GPS) Rwy 20

NA when local weather not available.

**VALPARAISO, IN**

PORTER COUNTY  
 RGNL (VPZ).....ILS Rwy 27<sup>1</sup>  
 RNAV (GPS) Rwy 9<sup>2</sup>  
 RNAV (GPS) Rwy 18<sup>2</sup>  
 RNAV (GPS) Rwy 27<sup>2</sup>

<sup>1</sup>LOC, NA.

<sup>2</sup>NA when local weather not available.

**VAN WERT, OH**

VAN WERT  
 COUNTY (VNW).....RNAV (GPS) Rwy 9  
 RNAV (GPS) Rwy 27

NA when local weather not available.

**WARSAW, IN**

WARSAW MUNI (ASW).....RNAV (GPS) Rwy 9  
 RNAV (GPS) Rwy 27  
 VOR Rwy 9

NA when local weather not available.

**WASHINGTON, IN**

DAVIESS  
 COUNTY (DCY).....RNAV (GPS) Rwy 18

NA when local weather not available.





**TAKEOFF MINIMUMS, (OBSTACLE) DEPARTURE PROCEDURES, AND  
DIVERSE VECTOR AREA (RADAR VECTORS)**  
INSTRUMENT APPROACH PROCEDURE CHARTS

17285

**IFR TAKEOFF MINIMUMS AND (OBSTACLE) DEPARTURE PROCEDURES**

Civil Airports and Selected Military Airports

ALL USERS: Airports that have Departure Procedures (DPs) designed specifically to assist pilots in avoiding obstacles during the climb to the minimum enroute altitude, and/or airports that have civil IFR takeoff minimums other than standard, are listed below. Takeoff Minimums and Departure Procedures apply to all runways unless otherwise specified. Altitudes, unless otherwise indicated, are minimum altitudes in MSL.

DPs specifically designed for obstacle avoidance are referred to as Obstacle Departure Procedures (ODPs) and are textually described below, or published separately as a graphic procedure. If the ODP is published as a graphic procedure, its name will be listed below, and it can be found in either this volume (civil), or the applicable military volume, as appropriate. Users will recognize graphic obstacle DPs by the term "(OBSTACLE)" included in the procedure title; e.g., TETON TWO (OBSTACLE). If not specifically assigned an ODP, SID, or radar vector as part of an IFR clearance, an ODP may be required to be flown for obstacle clearance, even though not specifically stated in the IFR clearance. When doing so in this manner, ATC should be informed when the ODP being used contains a specified route to be flown, restrictions before turning, and/or altitude restrictions.

Some ODPs, which are established solely for obstacle avoidance, require a climb in visual conditions to cross the airport, a fix, or a NAVAID in a specified direction, at or above a specified altitude. These procedures are called Visual Climb Over Airport (VCOA). To ensure safe and efficient operations, the pilot must verbally request approval from ATC to fly the VCOA when requesting their IFR clearance.

At some locations where an ODP has been established, a diverse vector area (DVA) may be created to allow radar vectors to be used in lieu of an ODP. DVA information will state that headings will be as assigned by ATC and climb gradients, when applicable, will be published immediately following the specified departure procedure.

Graphic DPs designed by ATC to standardize traffic flows, ensure aircraft separation and enhance capacity are referred to as "Standard Instrument Departures (SIDs)". SIDs also provide obstacle clearance and are published under the appropriate airport section. ATC clearance must be received prior to flying a SID.

CIVIL USERS NOTE: Title 14 Code of Federal Regulations Part 91 prescribes standard takeoff rules and establishes takeoff minimums for certain operators as follows: (1) For aircraft, other than helicopters, having two engines or less – one statute mile visibility. (2) For aircraft having more than two engines – one-half statute mile visibility. (3) For helicopters – one-half statute mile visibility. These standard minima apply in the absence of any different minima listed below.

MILITARY USERS NOTE: Civil (nonstandard) takeoff minima are published below. For military takeoff minima, refer to appropriate service directives.

NAME	TAKEOFF MINIMUMS	NAME	TAKEOFF MINIMUMS
------	------------------	------	------------------

**AKRON, OH**

AKRON-CANTON RGNL (CAK)  
TAKEOFF MINIMUMS AND (OBSTACLE)  
DEPARTURE PROCEDURES  
AMDT 6 10322 (FAA)

TAKEOFF OBSTACLE NOTES: **Rwy 1**, multiple trees beginning 2756' from DER, 447' left of centerline, up to 116' AGL/1316' MSL. Power lines beginning 3215' from DER, left and right of centerline, up to 80' AGL/1289' MSL. **Rwy 5**, multiple trees beginning 840' from DER, 550' right of centerline, up to 116' AGL/1336' MSL. Tree 577' from DER, 561' left of centerline, 46' AGL/1256' MSL. **Rwy 19**, trees beginning 1998' from DER, 817' left of centerline, up to 100' AGL/1290' MSL.

# TAKEOFF MINIMUMS, (OBSTACLE) DEPARTURE PROCEDURES, AND DIVERSE VECTOR AREA (RADAR VECTORS)

17285

## AKRON, OH (CON'T)

### AKRON FULTON INTL (AKR)

#### TAKEOFF MINIMUMS AND (OBSTACLE) DEPARTURE PROCEDURES

AMDT 2 14317 (FAA)

TAKEOFF MINIMUMS: **Rwy 1**, 300-1 or std. w/min. climb of 490' per NM to 1300. **Rwy 7**, 300-1½. or std. w/min. climb of 230' per NM to 1400 or alternatively, with standard takeoff minimums and a normal 200' per NM climb gradient, takeoff must occur no later than 1800' prior to DER. **Rwy 19**, 300-1 5/8 or std. w/min. climb of 400' per NM to 1400. **Rwy 25**, 300-1 5/8 or standard climb of 685' per NM to 1500.

DEPARTURE PROCEDURE: **Rwy 25**, climb heading 249° to 2600 before turning right.

TAKEOFF OBSTACLE NOTES: **Rwy 1**, trees, buildings, poles, antennas, and parking lots beginning 68' from DER, 236' left of centerline, up to 48' AGL/1085' MSL. Trees, poles, buildings and antennas beginning 793' from DER, 2' left of centerline, up to 99' AGL/1135' MSL. Trees, poles, buildings, vehicles on roads and parking lot beginning 286' from DER, 132' right of centerline, up to 78' AGL/1121' MSL. Trees, poles and buildings beginning 1481' from DER, 5' right of centerline, up to 99' AGL/1210' MSL. **Rwy 7**, rising terrain beginning 45' from DER, left and right of centerline, 1119' MSL. Vehicles on roads and parking lot, trees, fences, bushes and poles beginning 62' from DER, 10' right of centerline, up to 21' AGL/1127' MSL. Vehicles on road and parking lot, trees, fences, signs, buildings and poles beginning 1459' from DER, 4' right of centerline, up to 69' AGL/1258' MSL. Vehicles on roads, trees, fences and poles beginning 251' from DER, 318' left of centerline, up to 48' AGL/1134' MSL. Vehicles on roads, trees, fences, antennas and poles beginning 692' from DER, on centerline and left of centerline, up to 93' AGL/1213' MSL. **Rwy 19**, rising terrain beginning 3' from DER, left and right of centerline, up to 1183' MSL. Trees, poles, vehicles, fences, and goalpost beginning 119' from DER, 36' left of centerline, up to 30' AGL/1082' MSL. Trees, buildings, poles, vehicles, traffic lights and parking lots beginning 1019' from DER, 4' left of centerline, up to 83' AGL/1192' MSL. Trees, poles, and buildings beginning 3940' from DER, 1' left of centerline, up to 102' AGL/1260' MSL. Trees, buildings and lights beginning 681' from DER, 431' right of centerline, up to 70' AGL/1115' MSL. Trees, towers, lights, buildings, fences, poles and vehicles on road beginning 1690' from DER, 3' right of centerline, up to 99' AGL/1262' MSL. **Rwy 25**, rising terrain beginning 70' from DER, left and right of centerline, up to 1177' MSL. Railroad track with train beginning 66' from DER, crossing centerline right to left, 23' AGL/1096' MSL. Trees, fences and vehicles on roads beginning 53' from DER, 352' right of centerline, up to 71' AGL/1165' MSL. Trees, bushes, poles, lights, antennas, fences, vehicles on roads and parking lots beginning 1405' from DER, 5' right of centerline, up to 102' AGL/1229' MSL. Trees beginning 503' from DER, 375' left of centerline, up to 77' AGL/1157' MSL. Trees, bushes, poles, fences and vehicles on road beginning 1293' from DER, on centerline and left of centerline, up to 106' AGL/1227' MSL. Towers and antenna beginning 1.4 NM from DER, 216' left of centerline, up to 309' AGL/1343' MSL.

## ANDERSON, IN

### ANDERSON MUNI-DARLINGTON FIELD

#### (AID)

#### TAKEOFF MINIMUMS AND (OBSTACLE) DEPARTURE PROCEDURES

AMDT1 11069 (FAA)

TAKEOFF MINIMUMS: **Rwy 30**, 300-1¼ or std. w/min. climb of 220' per NM to 1200, or alternatively, with standard takeoff minimums and a normal 200' per NM climb gradient, takeoff must occur no later than 1500' prior to DER.

TAKEOFF OBSTACLE NOTES: **Rwy 12**, pole and trees beginning 509' from DER, 519' left of centerline, up to 100' AGL/1005' MSL. Trees beginning 1947' from DER, 446' right of centerline, up to 100' AGL/1010' MSL. Railroad 944' from DER, left and right of centerline, up to 23' AGL/945' MSL. **Rwy 18**, trees beginning 437' from DER, 169' left of centerline, up to 100' AGL/951' MSL. Trees beginning 440' from DER, 159' right of centerline, up to 100' AGL/1015' MSL. Vehicles on road beginning 373' from DER, left and right of centerline, up to 15' AGL/922' MSL. Terrain 417' from DER, 299' left of centerline, 0' AGL/918' MSL. **Rwy 30**, tower and trees beginning 1516' from DER, 519' left of centerline, up to 161' AGL/1057' MSL. Trees beginning 389' from DER, 344' right of centerline, up to 100' AGL/1009' MSL. Vehicles on road beginning 152' from DER, left and right of centerline, up to 15' AGL/884' MSL. **Rwy 36**, trees beginning 850' from DER, 133' left of centerline, up to 100' AGL/999' MSL. Building and trees beginning 277' from DER, 361' right of centerline, up to 100' AGL/1009' MSL. Vehicles on road beginning 165' from DER, left and right of centerline, up to 15' AGL/925' MSL.

## ASHLAND, OH

### ASHLAND COUNTY (3G4)

#### TAKEOFF MINIMUMS AND (OBSTACLE) DEPARTURE PROCEDURES

AMDT 3 10126 (FAA)

TAKEOFF OBSTACLE NOTES: **Rwy 1**, trees beginning 61' from DER, 194' right of centerline, up to 50' AGL/1249' MSL. **Rwy 19**, trees beginning 5' from DER, 167' left of centerline, up to 50' AGL/1259' MSL.

04 JAN 2018 to 01 FEB 2018

04 JAN 2018 to 01 FEB 2018

# TAKEOFF MINIMUMS, (OBSTACLE) DEPARTURE PROCEDURES, AND DIVERSE VECTOR AREA (RADAR VECTORS)

17285

EC-2

# TAKEOFF MINIMUMS, (OBSTACLE) DEPARTURE PROCEDURES, AND DIVERSE VECTOR AREA (RADAR VECTORS)

17285

## ASHTABULA, OH

NORTHEAST OHIO RGNL (HZY)

TAKEOFF MINIMUMS AND (OBSTACLE)

DEPARTURE PROCEDURES

AMDT 1 17285 (FAA)

TAKEOFF OBSTACLE NOTES: **Rwy 9**, tree 492' from DER, 507' left of centerline, 23' AGL/942' MSL. Tree 904' from DER, 708' left of centerline, 5' AGL/962' MSL. Tree 1187' from DER, 650' left of centerline, 14' AGL/966' MSL. Trees beginning 1259' from DER, 629' left of centerline, up to 40' AGL/967' MSL. Tree 1370' from DER, 739' left of centerline, 76' AGL/995' MSL. Trees beginning 1464' from DER, 619' left of centerline, up to 83' AGL/1002' MSL. Trees beginning 1613' from DER, 699' left of centerline, up to 90' AGL/1010' MSL. Trees beginning 1737' from DER, 575' left of centerline, up to 103' AGL/1023' MSL. Trees beginning 1778' from DER, 468' left of centerline, up to 105' AGL/1026' MSL. Tree 2099' from DER, 816' right of centerline, 49' AGL/981' MSL. Tree 2139' from DER, 748' right of centerline, 73' AGL/999' MSL. Trees beginning 2201' from DER, 169' right of centerline, up to 75' AGL/1003' MSL. **Rwy 27**, trees beginning 746' from DER, 646' right of centerline, up to 45' AGL/939' MSL. Pole 801' from DER, 484' left of centerline, 29' AGL/937' MSL. Pole 818' from DER, 645' left of centerline, 35' AGL/938' MSL. Trees beginning 1059' from DER, 678' right of centerline, up to 59' AGL/949' MSL. Trees beginning 1134' from DER, 646' right of centerline, up to 84' AGL/978' MSL. Trees beginning 1182' from DER, 740' left of centerline, up to 72' AGL/966' MSL. Trees beginning 1978' from DER, 546' right of centerline, up to 92' AGL/991' MSL. Tree 3418' from DER, 811' left of centerline, 97' AGL/995' MSL. Tree 3717' from DER, 1073' left of centerline, 105' AGL/1003' MSL

## ATHENS (ALBANY), OH

OHIO UNIVERSITY (UNI)

TAKEOFF MINIMUMS AND (OBSTACLE)

DEPARTURE PROCEDURES

ORIG-A 15204 (FAA)

TAKEOFF MINIMUMS: **Rwy 7**, 200-1 or std. w/ min. climb of 310' per NM to 1000. **Rwy 25**, 200-1 or std. w/ min. climb of 360' per NM to 1000.

TAKEOFF OBSTACLE NOTES: **Rwy 7**, trees beginning 4439' from DER, 1034' left of centerline, up to 100' AGL/933' MSL. Trees beginning 2869' from DER, 1171' right of centerline, up to 100' AGL/879' MSL. Vehicle abeam DER 451' left of centerline, 17' AGL/769' MSL. **Rwy 25**, trees beginning 3371' from DER, 425' left of centerline, up to 100' AGL/925' MSL. Trees beginning 1221' from DER, 624' right of centerline, up to 100' AGL/999' MSL.

## AUBURN, IN

DE KALB COUNTY (GWB)

TAKEOFF MINIMUMS AND (OBSTACLE)

DEPARTURE PROCEDURES

AMDT 1 06271 (FAA)

TAKEOFF OBSTACLE NOTES: **Rwy 9**, multiple trees beginning 428' from DER, 227' right of centerline, up to 100' AGL/979' MSL. **Rwy 27**, multiple trees beginning 83' from DER, 207' left of centerline, up to 100' AGL/939' MSL. Multiple tree beginning 1377' from DER, 316' right of centerline, up to 100' AGL/930' MSL.

## BARNESVILLE, OH

BARNESVILLE-BRADFIELD (6G5)

TAKEOFF MINIMUMS AND (OBSTACLE)

DEPARTURE PROCEDURES

ORIG 85297 (FAA)

TAKEOFF MINIMUMS: **Rwys 9, 27**, 300-1.

## BATAVIA, OH

CLERMONT COUNTY (I69)

TAKEOFF MINIMUMS AND (OBSTACLE)

DEPARTURE PROCEDURES

ORIG 12124 (FAA)

TAKEOFF OBSTACLE NOTES: **Rwy 4**, terrain 8' from DER, 311' left of centerline, 813' MSL. Trees beginning 89' from DER, left and right of centerline, up to 100' AGL/899' MSL. Fence 195' from DER, 276' left of centerline, up to 19' AGL/819' MSL. Vehicles on roadway beginning 237' from DER, left and right of centerline, up to 15' AGL/824' MSL. Windsock 408' from DER, 225' right of centerline, up to 24' AGL/824' MSL. **Rwy 22**, buildings 55' from DER, left and right of centerline, up to 22' AGL/862' MSL. Trees beginning 81' from DER, left and right of centerline, up to 100' AGL/967' MSL. Fences beginning 102' from DER, left and right of centerline, up to 17' AGL/857' MSL. Poles beginning 195' from DER, left and right of centerline, up to 45' AGL/885' MSL. Vehicles on roadway beginning 216' from DER, left and right of centerline, up to 15' AGL/866' MSL. Sign 441' from DER, 231' left of centerline, up to 19' AGL/859' MSL.

## BEDFORD, IN

VIRGIL I GRISSOM MUNI (BFR)

TAKEOFF MINIMUMS AND (OBSTACLE)

DEPARTURE PROCEDURES

ORIG 11265 (FAA)

TAKEOFF OBSTACLE NOTES: **Rwy 6**, trees beginning 321' from DER, left and right of centerline, up to 112' AGL/830' MSL. **Rwy 13**, trees beginning 78' from DER, left and right of centerline, up to 110' AGL/849' MSL. **Rwy 24**, trees beginning 534' from DER, left and right of centerline, up to 100' AGL/800' MSL. **Rwy 31**, trees beginning 27' from DER, left and right of centerline, up to 107' AGL/806' MSL.

## BELLEFONTAINE, OH

BELLEFONTAINE RGNL (EDJ)

TAKEOFF MINIMUMS AND (OBSTACLE)

DEPARTURE PROCEDURES

ORIG-A 12292 (FAA)

TAKEOFF MINIMUMS: **Rwy 7**, std. w/min. climb of 245' per NM to 2100.

DEPARTURE PROCEDURE: **Rwy 7**, climb heading 074° to 2100 before proceeding on course.

TAKEOFF OBSTACLE NOTES: **Rwy 7**, trees beginning 2172' from DER, 43' right of centerline, up to 99' AGL/1224' MSL. Trees beginning 2252' from DER, 77' left of centerline, up to 89' AGL/1228' MSL. **Rwy 25**, tree 508' from DER, 539' right of centerline, 35' AGL/1144' MSL. Ground 66' from DER, 494' right of centerline, 1107' MSL.

# TAKEOFF MINIMUMS, (OBSTACLE) DEPARTURE PROCEDURES, AND DIVERSE VECTOR AREA (RADAR VECTORS)

17285

EC-2

# TAKEOFF MINIMUMS, (OBSTACLE) DEPARTURE PROCEDURES, AND DIVERSE VECTOR AREA (RADAR VECTORS)

17285

## BLOOMINGTON, IN

MONROE COUNTY (BMG)  
TAKEOFF MINIMUMS AND (OBSTACLE)  
DEPARTURE PROCEDURES  
AMDT 6 11237 (FAA)

TAKEOFF MINIMUMS: **Rwy 24**, 300-1.  
TAKEOFF OBSTACLE NOTES: **Rwy 6**, poles and building beginning 424' from DER, 332' left of centerline, up to 29' AGL/874' MSL. Trees beginning 491' from DER, left and right of centerline, up to 72' AGL/972' MSL. Fence 181' from DER, 115' right of centerline, 6' AGL/846' MSL. Vehicle on road beginning 89' from DER, left and right of centerline, 15' AGL/862' MSL. **Rwy 17**, vehicle on road 187' from DER, 18' right of centerline, 15' AGL/850' MSL. Tree 1263' from DER, 625' right of centerline, 32' AGL/871' MSL. Bush 855' from DER, 594' left of centerline, 25' AGL/862' MSL. **Rwy 24**, trees and poles beginning 158' from DER, left and right of centerline, up to 85' AGL/1021' MSL. Fence 394' from DER, 72' left of centerline, 9' AGL/849' MSL. Buildings beginning 1990' from DER, 321' right of centerline, up to 25' AGL/952' MSL. Vehicle on road beginning 45' from DER, left and right of centerline, 15' AGL/945' MSL. **Rwy 35**, trees beginning 2119' from DER, 120' left and right of centerline, up to 85' AGL/975' MSL.

## BLUFFTON, OH

BLUFFTON (5G7)  
TAKEOFF MINIMUMS AND (OBSTACLE)  
DEPARTURE PROCEDURES  
AMDT 1A 15288 (FAA)

TAKEOFF OBSTACLE NOTES: **Rwy 5**, runway lights beginning 9' from DER, left and right of centerline, up to 3' AGL/848' MSL. Road and pole beginning 53' from DER, left and right of centerline, up to 42' AGL/889' MSL. Roads beginning 211' from DER, 330' right of centerline, up to 17' AGL/881' MSL. Poles, road and tree beginning 497' from DER, up to 100' AGL/883' MSL. Trees and poles beginning 1205' from DER, left and right of centerline, up to 100' AGL/911' MSL. **Rwy 23**, runway lights beginning 8' from DER, left and right of centerline, up to 4' AGL/852' MSL. Tree 91' from DER, 167' left of centerline, 100' AGL/853' MSL. Tree 298' from DER, 506' right of centerline, 100' AGL/866' MSL. Trees beginning 405' from DER, left and right of centerline, up to 100' AGL/900' MSL. Trees beginning 1007' from DER, left and right of centerline, up to 100' AGL/932' MSL.

## BOWLING GREEN, OH

WOOD COUNTY (1G0)  
TAKEOFF MINIMUMS AND (OBSTACLE)  
DEPARTURE PROCEDURES  
AMDT 3 07074 (FAA)

TAKEOFF MINIMUMS: **Rwy 18**, 300-1.  
TAKEOFF OBSTACLE NOTES: **Rwy 18**, building/tower 3581' from DER, 254' right of centerline, 141' AGL/841' MSL.

## BRAZIL, IN

BRAZIL CLAY COUNTY (0I2)  
TAKEOFF MINIMUMS AND (OBSTACLE)  
DEPARTURE PROCEDURES  
TAKEOFF MINIMUMS: **Rwys 9, 27**, 300-1.

## BRYAN, OH

WILLIAMS COUNTY (0G6)  
TAKEOFF MINIMUMS AND (OBSTACLE)  
DEPARTURE PROCEDURES  
ORIG 10154 (FAA)

TAKEOFF OBSTACLE NOTES: **Rwy 7**, vehicles on road beginning 49' from DER, from left to right of centerline, up to 15' AGL/734' MSL. Tree 160' from DER, 323' left of centerline 30' AGL/759' MSL. Trees beginning 324' from DER, 403' right of centerline, up to 101' AGL/829' MSL. **Rwy 25**, vehicles on road beginning 203' from DER, from right to left of centerline, up to 15' AGL/744' MSL. Pole 285' from DER, 329' right of centerline, 37' AGL/767' MSL. Trees beginning 2787' from DER, 769' right of centerline, up to 100' AGL/829' MSL.

## BUCYRUS, OH

PORT BUCYRUS-CRAWFORD COUNTY  
(17G)  
TAKEOFF MINIMUMS AND (OBSTACLE)  
DEPARTURE PROCEDURES  
AMDT 2 10322 (FAA)

TAKEOFF MINIMUMS: **Rwy 4**, 300-1½ or std. w/ min. climb of 297' per NM to 1300, or alternatively, with std. takeoff minimums and a normal 200' per NM climb gradient, takeoff must occur no later than 1400' prior to DER.

TAKEOFF OBSTACLE NOTES: **Rwy 4**, terrain 4' from DER, 484' right of centerline, up to 1008' MSL. Aircraft on ramp beginning 47' from DER, 289' right of centerline, up to 15' AGL/1019' MSL. Terrain beginning 93' from DER, 245' left of centerline, up to 1008' MSL. Vehicle on road beginning 107' from DER, 487' right of centerline, 15' AGL/1019' MSL. Trees 229' from DER, 261' left of centerline, up to 100' AGL/1099' MSL. Trees 2777' from DER, 1207' left of centerline, up to 100' AGL/1109' MSL. Trees 2933' from DER, 330' right of centerline, up to 100' AGL/1124' MSL. Tower 1.1 NM from DER, 1798' left of centerline, 165' AGL/1175' MSL. **Rwy 22**, buildings beginning 4' from DER, 352' right of centerline, up to 40' AGL/1044' MSL. Vehicle on road beginning 243' from DER, 552' left of centerline, 15' AGL/1019' MSL. Trees 426' from DER, 382' left of centerline, up to 100' AGL/1104' MSL. Trees 733' from DER, 466' right of centerline, up to 100' AGL/1099' MSL.

04 JAN 2018 to 01 FEB 2018

04 JAN 2018 to 01 FEB 2018

# TAKEOFF MINIMUMS, (OBSTACLE) DEPARTURE PROCEDURES, AND DIVERSE VECTOR AREA (RADAR VECTORS)

17285

EC-2

# TAKEOFF MINIMUMS, (OBSTACLE) DEPARTURE PROCEDURES, AND DIVERSE VECTOR AREA (RADAR VECTORS)

17285

## CADIZ, OH

HARRISON COUNTY (8G6)

TAKEOFF MINIMUMS AND (OBSTACLE)  
DEPARTURE PROCEDURES

AMDT 3 11125 (FAA)

TAKEOFF MINIMUMS: **Rwy 13,31**, 300-1.

TAKEOFF OBSTACLE NOTES: **Rwy 13**, trees beginning 503' from DER, 213' left and right of centerline, up to 100' AGL/1219' MSL. Power line 927' from DER, 718' left of centerline, 30' AGL/1196' MSL. **Rwy 31**, rising terrain beginning 966' from DER, 224' left and right of centerline, up to 1319' MSL.

## CALDWELL, OH

NOBLE COUNTY (I10)

TAKEOFF MINIMUMS AND (OBSTACLE)  
DEPARTURE PROCEDURES

AMDT 1 97146 (FAA)

TAKEOFF MINIMUMS: **Rwy 5, 23**, 400-1.

DEPARTURE PROCEDURE: **Rwy 23**, climb runway heading to 1500 before turning.

## CAMBRIDGE, OH

CAMBRIDGE MUNI (CDI)

TAKEOFF MINIMUMS AND (OBSTACLE)  
DEPARTURE PROCEDURES

AMDT 3 15064 (FAA)

TAKEOFF MINIMUMS: **Rwy 4**, 400-2 or std. w/min. climb of 397' per NM to 1400. **Rwy 22**, 300-1½ or std. w/min. climb of 685' per NM to 1100.

DEPARTURE PROCEDURE: **Rwy 4**, climb heading 040° to 1300 before turning left.

TAKEOFF OBSTACLE NOTES: **Rwy 4**, multiple trees beginning 161' from DER, 179' left of centerline, up to 51' AGL/849' MSL. Multiple trees beginning 672' from DER, 563' right of centerline, up to 62' AGL/860' MSL. Multiple poles beginning 301' from DER, 519' right of centerline, up to 31' AGL/973' MSL. Multiple towers beginning 794' from DER, 659' left of centerline, up to 43' AGL/835' MSL. Building 639' from DER, 386' right of centerline, 25' AGL/825' MSL. Multiple poles beginning 990' from DER, 26' left of centerline, up to 36' AGL/826' MSL. Multiple trees beginning 1147' from DER, 144' right of centerline, up to 74' AGL/872' MSL. Multiple trees beginning 1307' from DER, 2' left of centerline, up to 89' AGL/887' MSL. Multiple towers, poles beginning 1040' from DER, 336' right of centerline, up to 48' AGL/843' MSL. Multiple towers, poles beginning 1089' from DER, 613' left of centerline, up to 36' AGL/833' MSL. Sign 1029' from DER, 623' left of centerline. 35' AGL/832' MSL. Monument 1.5 NM from DER, 402' left of centerline, 120' AGL/1098' MSL. Multiple trees beginning 1.5 NM from DER, 738' right of centerline, up to 100' AGL/1126' MSL. Tower 2.8 NM from DER, 4400' left of centerline, 233' AGL/1106' MSL. **Rwy 22**, multiple trees beginning 204' from DER, 309' right of centerline, up to 100' AGL/931' MSL. Multiple poles beginning 366' from DER, 43' right of centerline, up to 35' AGL/834' MSL. NAVAID 300' from DER, 1' right of centerline, 9' AGL/807' MSL. Obstruction light on DME 477' from DER, 168' right of centerline, 19' AGL/817' MSL. Multiple trees beginning 1004' from DER, 395' left of centerline, up to 100' AGL/1023' MSL. Multiple poles beginning 1165' from DER, 93' left of centerline, up to 34' AGL/1021' MSL. Building 1272' from DER, 426' right of centerline, 21' AGL/881' MSL.

## CARROLLTON, OH

CARROLL COUNTY-TOLSON (TSO)

TAKEOFF MINIMUMS AND (OBSTACLE)  
DEPARTURE PROCEDURES

AMDT 4 99140 (FAA)

TAKEOFF MINIMUMS: **Rwy 7, 25**, 300-1.

TAKEOFF OBSTACLE NOTES: **Rwy 7**, 100' AGL trees 1800' from DER, 400' left of centerline. **Rwy 25**, 100' AGL trees 200' from DER, 400' left of centerline.

## CELINA, OH

LAKEFIELD (CQA)

TAKEOFF MINIMUMS AND (OBSTACLE)  
DEPARTURE PROCEDURES

AMDT 2 10042 (FAA)

TAKEOFF OBSTACLE NOTES: **Rwy 8**, trees beginning 782' from DER, 7' right of centerline, up to 100' AGL/969' MSL. Trees beginning 57' from DER, 130' left of centerline, up to 100' AGL/976' MSL. **Rwy 26**, vehicle 63' from DER, 469' right of centerline, 15' AGL/909' MSL. Poles beginning 127' from DER, 145' right of centerline, up to 51' AGL/941' MSL. Antenna 653' from DER, 498' right of centerline, 33' AGL/923' MSL. Trees beginning 1194' from DER, 319' right of centerline, up to 100' AGL/952' MSL.

## CHILLICOTHE, OH

ROSS COUNTY (RZT)

TAKEOFF MINIMUMS AND (OBSTACLE)  
DEPARTURE PROCEDURES

AMDT 3A 11321 (FAA)

TAKEOFF MINIMUMS: **Rwy 23**, 400-1 or std. with min. climb of 340' per NM to 1300.

DEPARTURE PROCEDURE: **Rwy 5**, climb runway heading to 1500 before turning right. **Rwy 23**, climb runway heading to 1500 before turning left.

04 JAN 2018 to 01 FEB 2018

04 JAN 2018 to 01 FEB 2018

# TAKEOFF MINIMUMS, (OBSTACLE) DEPARTURE PROCEDURES, AND DIVERSE VECTOR AREA (RADAR VECTORS)

17285

EC-2

**TAKEOFF MINIMUMS, (OBSTACLE) DEPARTURE PROCEDURES, AND  
DIVERSE VECTOR AREA (RADAR VECTORS)**

17285

**CINCINNATI, OH**

CINCINNATI MUNI AIRPORT-LUNKEN FIELD (LUK)  
TAKEOFF MINIMUMS AND (OBSTACLE) DEPARTURE  
PROCEDURES

AMDT 14 10098 (FAA)

TAKEOFF MINIMUMS: **Rwy 3L**, std. w/ min. climb of 392' per NM to 1000 or 400-2 w/ min. climb of 213' per NM to 1400 or 1700-2½ for climb in visual conditions. **Rwy 3R**, std. w/ min. climb of 355' per NM to 1000 or 400-2 w/ min. climb of 231' per NM to 1400 or 1700-2½ for climb in visual conditions. **Rwy 7**, std. w/ min. climb of 424' per NM to 1000 or 400-1¾ w/ min. climb of 205' per NM to 1300 or 1700-2½ for climb in visual conditions. **Rwy 21L**, std. w/ min. climb of 413' per NM to 1100 or 600-2¾ w/ min. climb of 228' per NM to 1300 or 1700-2½ for climb in visual conditions. **Rwy 21R**, std. w/ min. climb of 466' per NM to 1100 or 600-3 w/ min. climb of 223' per NM to 1300 or 1700-2½ for climb in visual conditions. **Rwy 25**, 600-2¾ w/ min. climb of 218' per NM to 1300 or 1700-2½ for climb in visual conditions.

DEPARTURE PROCEDURE: **Rwy 3L**, climb heading 027° to 1200 before proceeding on course. For climb in visual conditions: cross Cincinnati Muni Airport-Lunken Field at or above 2000 MSL before proceeding on course. **Rwy 3R**, climb heading 025° to 1400 before proceeding on course. For climb in visual conditions: cross Cincinnati Muni Airport-Lunken Field at or above 2000 MSL before proceeding on course. **Rwy 7**, climb heading 066° to 1300 before proceeding on course. For climb in visual conditions: cross Cincinnati Muni Airport-Lunken Field at or above 2000 MSL before proceeding on course. **Rwy 21L**, climb heading 205° to 1400 before proceeding on course. For climb in visual conditions: cross Cincinnati Muni Airport-Lunken Field at or above 2000 MSL before proceeding on course. **Rwy 21R**, climb heading 207° to 1500 before proceeding on course. For climb in visual conditions: cross Cincinnati Muni Airport-Lunken Field at or above 2000 MSL before proceeding on course. **Rwy 25**, climb heading 246° to 1900 before proceeding on course. For climb in visual conditions: cross Cincinnati Muni Airport-Lunken Field at or above 2000 MSL before proceeding on course.

TAKEOFF OBSTACLE NOTES: **Rwy 3L**, building and hangers beginning 305' from DER, 259' left of centerline, up to 41' AGL/521' MSL. Trees beginning 957' from DER, 144' right of centerline, up to 77' AGL/556' MSL. Trees 1.2 NM from DER, 2270' left of centerline, up to 97' AGL/866' MSL. Pole 1.6 NM from DER, 320' left of centerline, 68' AGL/797' MSL. **Rwy 3R**, trees beginning 1426' from DER, 196' left of centerline, up to 68' AGL/557' MSL. Trees beginning 840' from DER, 130' right of centerline, up to 83' AGL/572' MSL. Trees 1.3 NM from DER, 2393' left of centerline, up to 97' AGL/856' MSL. Pole 1.5 NM from DER, 2062' left of centerline, 68' AGL/797' MSL. **Rwy 7**, trees beginning 447' from DER, 68' left of centerline, up to 87' AGL/576' MSL. Trees beginning 664' from DER, 45' right of centerline, up to 88' AGL/575' MSL. Trees 4515' from DER, 1519' right of centerline, up to 81' AGL/720' MSL. Trees 1.3 NM from DER, 2088' right of centerline, up to 85' AGL/824' MSL. **Rwy 21R**, trees beginning 1444' from DER, 203' left of centerline, up to 66' AGL/555' MSL. Trees beginning 1073' from DER, 25' right of centerline, up to 79' AGL/568' MSL. Trees 1.1 NM from DER, 2262' right of centerline, up to 86' AGL/895' MSL. Tower 2.3 NM from DER, 527' left of centerline, 168' AGL/990' MSL. Trees 2.4 NM from DER, 1847' left of centerline, up to 71' AGL/890' MSL. **Rwy 21L**, trees beginning 122' from DER, 63' left of centerline, up to 118' AGL/597' MSL. Trees beginning 15' from DER, 248' right of centerline, up to 82' AGL/571' MSL. Trees 4581' from DER, 1503' left of centerline, up to 144' AGL/723' MSL. Tower 2 NM from DER, 2027' right of centerline, 168' AGL/990' MSL. Pole 2.2 NM from DER, 281' right of centerline, 78' AGL/841' MSL. **Rwy 25**, sign, pole, hangars, and trees beginning 177' from DER, 13' left of centerline, up to 86' AGL/575' MSL. Road, building, poles, and trees beginning 185' from DER, 5' right of centerline, up to 73' AGL/562' MSL. Tank 1.4 NM from DER, 1755' right of centerline, 210' AGL/1046' MSL. Tower 2.6 NM from DER, 2052' left of centerline, 158' AGL/885' MSL.

**CIRCLEVILLE, OH**

PICKAWAY COUNTY MEMORIAL  
(CYO)

TAKEOFF MINIMUMS AND (OBSTACLE)  
DEPARTURE PROCEDURES

ORIG 14317 (FAA)

DEPARTURE PROCEDURE: **Rwy 1**, climb heading 008° to 1300 before turning left.

TAKEOFF MINIMUMS: **Rwy 1**, vehicle on road beginning 7' from DER, 447' right of centerline, up to 15' AGL/697' MSL. Runway end identifier light with electrical system 41' from DER, 79' right of centerline, 5' AGL/687' MSL. Runway end identifier light with electrical system 42' from DER, 82' left of centerline, 3' AGL/687' MSL. Fence beginning 177' from DER, 250' left of centerline, up to 12' AGL/694' MSL. Poles beginning 345' from DER, 184' right of centerline, up to 42' AGL/721' MSL. Vehicle on road beginning 649' from DER, 16' left of centerline, up to 15' AGL/703' MSL. Pole 667' from DER, 521' left of centerline, 29' AGL/711' MSL. Tree 1887' from DER, 184' right of centerline, 54' AGL/740' MSL. Tree 2251' from DER, 189' left of centerline, 59' AGL/745' MSL. **Rwy 19**, terrain beginning 108' from DER, 267' right of centerline, up to 669' MSL. Trees beginning 261' from DER, 64' left of centerline, up to 100' AGL/755' MSL. Trees beginning 765' from DER, 99' right of centerline, up to 100' AGL/737' MSL.

04 JAN 2018 to 01 FEB 2018

04 JAN 2018 to 01 FEB 2018

**TAKEOFF MINIMUMS, (OBSTACLE) DEPARTURE PROCEDURES, AND  
DIVERSE VECTOR AREA (RADAR VECTORS)**

17285

EC-2

# TAKEOFF MINIMUMS, (OBSTACLE) DEPARTURE PROCEDURES, AND

17285

## DIVERSE VECTOR AREA (RADAR VECTORS)

### CLEVELAND, OH

#### BURKE LAKEFRONT (BKL)

##### TAKEOFF MINIMUMS AND (OBSTACLE) DEPARTURE PROCEDURES

###### AMDT 6 17285 (FAA)

TAKEOFF MINIMUMS: **Rwy 6L**, 300-1¼ or standard w/ min. climb of 439' per NM to 1000. **Rwy 6R**, 300-1½ or standard w/min. climb of 332' per NM to 1000. **Rwy 24L**, 400-1¾ or standard w/min. climb of 757' per NM to 1000. **Rwy 24R**, 200-1 or standard w/min. climb of 492' per NM to 900.

DEPARTURE PROCEDURE: **Rwy 6L/R**, climbing left turn to 2000 on heading 350° to intercept CXR VOR/DME R-286 to CRIBS intersection before proceeding on course.

**Rwy 24L/R**, climbing right turn to 2000 on heading 350° to intercept CXR VOR/DME R-286 to CRIBS intersection before proceeding on course.

TAKEOFF OBSTACLE NOTES: **Rwy 6L**, runway light 9' from DER, 54' left of centerline, 2' AGL/584' MSL. Runway light 9' from DER, 55' right of centerline, 2' AGL/584' MSL. Tree 842' from DER, 720' right of centerline, 622' MSL. Pole 964' from DER, 235' left of centerline, 24' AGL/618' MSL. Crane 969' from DER, 589' right of centerline, 73' AGL/641' MSL. Tree 2294' from DER, 265' right of centerline, 650' MSL. Pole 2303' from DER, 477' right of centerline, 81' AGL/664' MSL. Poles, tree beginning 2303' from DER, 222' right of centerline, up to 84' AGL/665' MSL. Poles, tree, T-L tower beginning 2326' from DER, 166' right of centerline, up to 92' AGL/678' MSL. Building 2680' from DER, 595' right of centerline, 113' AGL/701' MSL. Buildings, bridge beginning 2682' from DER, 597' right of centerline, up to 124' AGL/704' MSL. Tower 4989' from DER, 1758' right of centerline, 237' AGL/856' MSL. Tower 1.1 NM from DER, 1347' right of centerline, 150' AGL/758 MSL. **Rwy 6R**, sign, REIL beginning 27' from DER, 89' left of centerline, up to 4' AGL/585' MSL. REIL 41' from DER, 89' right of centerline, 3' AGL/585' MSL. Windsock 175' from DER, 242' left of centerline, 11' AGL/590' MSL. Pole 177' from DER, 241' left of centerline, 14' AGL/594' MSL. Pole 471' from DER, 612' right of centerline, 37' AGL/617' MSL. Poles, signs beginning 626' from DER, 595' right of centerline, up to 38' AGL/618' MSL. Poles beginning 1009' from DER, 569' right of centerline, up to 56' AGL/637' MSL. Pole 1874' from DER, 568' right of centerline, 71' AGL/651' MSL. Pole, dome beginning 1874' from DER, 569' right of centerline, up to 72' AGL/652' MSL. Pole 3098' from DER, 1282' right of centerline, 49' AGL/661' MSL. Pole 3372' from DER, 1289' right of centerline, 88' AGL/708' MSL. T-L towers, pole, buildings beginning 3720' from DER, 93' right of centerline, up to 93' AGL/714' MSL. Tower, poles, building beginning 4310' from DER, 170' right of centerline, up to 106' AGL/737' MSL. Towers, antennas beginning 1 NM from DER, 1255' right of centerline, up to 237' AGL/856' MSL.

### CLEVELAND, OH (CON'T)

#### BURKE LAKEFRONT (BKL) (CON'T)

**Rwy 24L**, poles beginning 8' from DER, 28' left of centerline, up to 1' AGL/581' MSL. Pole 9' from DER, 49' right of centerline, 1' AGL/581' MSL. Runway light 10' from DER, 29' left of centerline, 2' AGL/582' MSL. Runway light 10' from DER, 29' right of centerline, 2' AGL/582' MSL. Fence beginning 184' from DER, 451' left of centerline, up to 9' AGL/590' MSL. Building 197' from DER, 502' left of centerline, 27' AGL/610' MSL. Building, tank beginning 213' from DER, 411' left of centerline, up to 30' AGL/613' MSL. NAVAID 245' from DER, 499' right of centerline, 9' AGL/587' MSL. Pole 900' from DER, 621' left of centerline, 60' AGL/628' MSL. Crane, poles, ship beginning 1038' from DER, 38' left of centerline, up to 85' AGL/653' MSL. Pole 1319' from DER, 161' right of centerline, 64' AGL/632' MSL. Building 1685' from DER, 684' left of centerline, 166' AGL/740' MSL. Building 1727' from DER, 643' left of centerline, 169' AGL/741' MSL. Buildings, dome, pole, ship beginning 1748' from DER, 367' left of centerline, up to 167' AGL/745' MSL. Ship 2146' from DER, 90' right of centerline, 65' AGL/637' MSL. Windmill beginning 2340' from DER, 1119' left of centerline, up to 152' AGL/750' MSL. Building 2696' from DER, 845' left of centerline, 150' AGL/751' MSL. Stadium, buildings, cranes beginning 2977' from DER, 816' left of centerline, up to 162' AGL/764' MSL. Building, ship, crane, elevator, bridge, brdg superstructure beginning 5056' from DER, 207' left of centerline, up to 275' AGL/896' MSL. **Rwy 24R**, runway light 10' from DER, 55' right of centerline, 2' AGL/582' MSL. Runway light, sign beginning 10' from DER, 55' left of centerline, up to 2' AGL/582' MSL. Poles, ship beginning 1514' from DER, 338' left of centerline, up to 64' AGL/632' MSL. Pole, ship beginning 2324' from DER, 866' left of centerline, up to 86' AGL/654' MSL. Stadium, buildings, cranes beginning 2977' from DER, 816' left of centerline, up to 162' AGL/764' MSL. Crane 5727' from DER, 1699' right of centerline, 152' AGL/731' MSL.

### CLEVELAND-HOPKINS INTL (CLE)

#### TAKEOFF MINIMUMS AND (OBSTACLE) DEPARTURE PROCEDURES

##### AMDT 16 10322 (FAA)

DEPARTURE PROCEDURE: **Rwys 6L, 6R, 10**, climbing left turn to intercept DJB VOR/DME R-082 inbound to 2600 before proceeding on course.

TAKEOFF OBSTACLE NOTES: **Rwy 6R**, antenna 1056' from DER, 82' left of centerline, 45' AGL/820' MSL.

**Rwy 10**, trees, pole and tower beginning 1159' from DER, 656' right of centerline, up to 137' AGL/922' MSL. Signs beginning 1236' from DER, 717' left of centerline, up to 86' AGL/857' MSL. **Rwy 24R**, trees beginning 3652' from DER, 856' left of centerline, up to 100' AGL/870' MSL. Tower 2564' from DER, 1027' right of centerline, 191' AGL/870' MSL. **Rwy 24L**, trees and poles beginning 1903' from DER, 5' left of centerline, up to 89' AGL/849' MSL. **Rwy 28**, trees, antenna and road beginning 3' from DER, 304' left of centerline, up to 94' AGL/820' MSL. Tree 712' from DER, 117' right of centerline, 135' AGL/811' MSL.

04 JAN 2018 to 01 FEB 2018

04 JAN 2018 to 01 FEB 2018

# TAKEOFF MINIMUMS, (OBSTACLE) DEPARTURE PROCEDURES, AND

17285

## DIVERSE VECTOR AREA (RADAR VECTORS)

EC-2



# TAKEOFF MINIMUMS, (OBSTACLE) DEPARTURE PROCEDURES, AND DIVERSE VECTOR AREA (RADAR VECTORS)

17285

## CLEVELAND, OH (CON'T)

### CUYAHOGA COUNTY (CGF)

TAKEOFF MINIMUMS AND (OBSTACLE)  
DEPARTURE PROCEDURES  
AMDT 1 10322 (FAA)

TAKEOFF OBSTACLE NOTES: **Rwy 6**, trees beginning 2127' from DER, 33' right of centerline, up to 109' AGL/982' MSL. Tree 2595' from DER, 739' left of centerline, 93' AGL/947' MSL. **Rwy 24**, terrain 35' from DER, 447' left of centerline, 874' MSL. Trees beginning 755' from DER, 46' right of centerline, up to 82' AGL/975' MSL. Building 1179' from DER, 676' left of centerline, 34' AGL/917' MSL. Trees beginning 1784' from DER, 35' left of centerline, up to 92' AGL/985' MSL.

## COLUMBUS, OH (CON'T)

### OHIO STATE UNIVERSITY (OSU)

TAKEOFF MINIMUMS AND (OBSTACLE)  
DEPARTURE PROCEDURES  
ORIG 11069 (FAA)

TAKEOFF OBSTACLE NOTES: **Rwy 5**, trees beginning 1461' from DER, 48' left of centerline, up to 76' AGL/955' MSL. Trees beginning 1422' from DER, 157' right of centerline, up to 86' AGL/965' MSL. **Rwy 9L**, trees beginning 1017' from DER, 122' left of centerline, up to 86' AGL/965' MSL. Trees beginning 2001' from DER, 1015' right of centerline, up to 91' AGL/965' MSL. **Rwy 9R**, trees beginning 197' from DER, 325' left of centerline, up to 73' AGL/937' MSL. Trees beginning 973' from DER, 339' right of centerline, up to 103' AGL/957' MSL. **Rwy 14**, wind sock 371' from DER, 273' left of centerline, 10' AGL/909' MSL. Tree 1395' from DER, 872' left of centerline, 46' AGL/935' MSL. Tree 2071' from DER, 295' right of centerline, 95' AGL/974' MSL. **Rwy 23**, stacks beginning 681' from DER, 512' left of centerline, up to 64' AGL/963' MSL. Trees beginning 709' from DER, 321' left of centerline, up to 44' AGL/948' MSL. Elevator 1406' from DER, 469' left of centerline, 83' AGL/978' MSL. Trees beginning 1248' from DER, 68' right of centerline, up to 74' AGL/978' MSL. **Rwy 27R**, silos beginning 2476' from DER, 88' left of centerline, 61' AGL/971' MSL. **Rwy 32**, trees beginning 1616' from DER, 210' left of centerline, up to 99' AGL/1003' MSL.

## COLUMBUS, IN

### COLUMBUS MUNI (BAK)

TAKEOFF MINIMUMS AND (OBSTACLE)  
DEPARTURE PROCEDURES  
ORIG 08269 (FAA)

TAKEOFF OBSTACLE NOTES: **Rwy 14**, tree 1589' from DER, 306' right of centerline, 40' AGL/696' MSL.

## COLUMBUS, OH

### BOLTON FIELD (TZR)

TAKEOFF MINIMUMS AND (OBSTACLE)  
DEPARTURE PROCEDURES  
ORIG 09015 (FAA)

DEPARTURE PROCEDURE: **Rwy 4**, climb heading 037° to 1800 before turning east.

TAKEOFF OBSTACLE NOTES: **Rwy 4**, tree 1091' from DER, 770' left of centerline, 53' AGL/959' MSL. Tree 487' from DER, 356' right of centerline, 23' AGL/929' MSL. Tree 1317' from DER, 452' right of centerline, 42' AGL/948' MSL. Tree 1307' from DER, 50' left of centerline, 36' AGL/942' MSL. Tree 1927' from DER, 135' right of centerline, 49' AGL/955' MSL. **Rwy 22**, tree 1273' from DER, 720' right of centerline, 40' AGL/945' MSL. Tree 712' from DER, 662' right of centerline, 25' AGL/927' MSL. Tree 1411' from DER, 658' right of centerline 33' AGL/939' MSL.

## CONNERSVILLE, IN

### METTEL FIELD (CEV)

TAKEOFF MINIMUMS AND (OBSTACLE)  
DEPARTURE PROCEDURES  
AMDT 2 06271 (FAA)

TAKEOFF MINIMUMS: **Rwys 4, 22**, NA-VFR use only.  
DEPARTURE PROCEDURE: **Rwy 18**, climb via heading 185° to 1500 before proceeding on course.

TAKEOFF OBSTACLE NOTES: **Rwy 18**, railroad 311' from DER, 580' left of centerline, 23' AGL/882' MSL. Multiple trees beginning 2280' from DER, 100' left of centerline, up to 113' AGL/974' MSL. **Rwy 36**, road 120' from DER, 301' right of centerline, 15' AGL/884' MSL. Railroad 649' from DER, 578' right of centerline, 23' AGL/892' MSL. Multiple trees beginning 3400' from DER, on centerline, up to 92' AGL/959' MSL.

## JOHN GLENN COLUMBUS INTL (CMH)

TAKEOFF MINIMUMS AND (OBSTACLE)  
DEPARTURE PROCEDURES  
AMDT 7A 17229 (FAA)

DEPARTURE PROCEDURE: **Rwy 28L**, climb heading 281° to 2100 before turning southbound. **Rwy 28R**, climb heading 281° to 2000 before turning southbound.

TAKEOFF OBSTACLE NOTES: **Rwy 10L**, sign 23' from DER, 348' right of centerline, 3' AGL/813' MSL. Trees beginning 1308' from DER, 800' left of centerline, up to 79' AGL/869' MSL. Trees beginning 1721' from DER, 764' right of centerline, up to 88' AGL/878' MSL. **Rwy 10R**, aircraft on taxiway abeam DER, 290' right of centerline, up to 59' AGL/878' MSL. Sign 42' from DER, 159' left of centerline, 6' AGL/817' MSL. Poles and building beginning 934' from DER, 538' right of centerline, up to 42' AGL/852' MSL. Trees beginning 1319' from DER, 225' right of centerline, up to 116' AGL/886' MSL. **Rwy 28L**, building 42' from DER, 111' right of centerline, 6' AGL/810' MSL. Trees beginning 1563' from DER, 870' left of centerline, up to 93' AGL/902' MSL. **Rwy 28R**, tower 1260' from DER, 837' left of centerline, 75' AGL/875' MSL. Trees and poles beginning 1228' from DER, 624' right of centerline, up to 72' AGL/882' MSL. Light 5' from DER, 4' left of centerline, 1' AGL/815' MSL.

# TAKEOFF MINIMUMS, (OBSTACLE) DEPARTURE PROCEDURES, AND DIVERSE VECTOR AREA (RADAR VECTORS)

17285

EC-2

# TAKEOFF MINIMUMS, (OBSTACLE) DEPARTURE PROCEDURES, AND DIVERSE VECTOR AREA (RADAR VECTORS)

17285

## COSHOCTON, OH

RICHARD DOWNING (140)  
TAKEOFF MINIMUMS AND (OBSTACLE)  
DEPARTURE PROCEDURES  
AMDT 1A 16259 (FAA)

TAKEOFF MINIMUMS: **Rwys 4, 22**, 300-1.  
TAKEOFF OBSTACLE NOTES: **Rwy 4**, tree 87' from DER, 402' left of centerline, 981' MSL. Trees beginning 88' from DER, 460' left of centerline, up to 84' AGL/1040' MSL. Tree 90' from DER, 226' right of centerline, 983' MSL. Tree 628' from DER, 509' right of centerline, 1006' MSL. **Rwy 22**, trees beginning 2' from DER, 290' left of centerline, up to 988' MSL. Pole, wsk beginning 11' from DER, 57' right of centerline, up to 7' AGL/979' MSL. Trees beginning 179' from DER, 275' left of centerline, up to 84' AGL/999' MSL. Trees beginning 1033' from DER, 595' left of centerline, up to 1042' MSL. Tree 2420' from DER, 123' right of centerline, 96' AGL/1035' MSL. Tree 2442' from DER, 52' right of centerline, 104' AGL/1043' MSL. Trees beginning 2443' from DER, 21' right of centerline, up to 106' AGL/1050' MSL. Trees beginning 2496' from DER, 3' left of centerline, up to 103' AGL/1045' MSL. Trees beginning 2503' from DER, on centerline, up to 103' AGL/1054' MSL. Trees beginning 2550' from DER, 43' right of centerline, up to 105' AGL/1061' MSL.

## CRAWFORDSVILLE, IN

CRAWFORDSVILLE MU NI (CFJ)  
TAKEOFF MINIMUMS AND (OBSTACLE)  
DEPARTURE PROCEDURES  
AMDT 1 16315 (FAA)

TAKEOFF OBSTACLE NOTES: **Rwy 04**, poles beginning 805' from DER, 224' right of centerline, up to 27' AGL/829' MSL. Tree 2838' from DER, 256' right of centerline, 873' MSL. Poles, terrain, vehicle on road, tree beginning 41' from DER, 54' left of centerline, up to 30' AGL/834' MSL. Tree 822' from DER, 95' left of centerline, 841' MSL. Trees beginning 856' from DER, 123' left of centerline, up to 843' MSL. Trees beginning 957' from DER, 213' left of centerline, up to 849' MSL. Tree 1055' from DER, 283' left of centerline, 850' MSL. Tree 1229' from DER, 418' left of centerline, 853' MSL. Tree 1312' from DER, 168' left of centerline, 873' MSL. Trees beginning 1324' from DER, 268' left of centerline, up to 875' MSL. Trees beginning 1559' from DER, 283' left of centerline, up to 876' MSL. Trees beginning 1862' from DER, 219' left of centerline, up to 881' MSL. **Rwy 22**, tree 653' from DER, 618' right of centerline, 846' MSL. Trees beginning 789' from DER, 205' right of centerline, up to 852' MSL. Trees beginning 1059' from DER, 191' right of centerline, up to 857' MSL. Trees beginning 2797' from DER, 386' right of centerline, up to 879' MSL. Tree 328' from DER, 508' left of centerline, 815' MSL. Trees beginning 559' from DER, 176' left of centerline, up to 867' MSL.

## DAYTON, OH

DAYTON-WRIGHT BROTHERS (MGY)  
TAKEOFF MINIMUMS AND (OBSTACLE)  
DEPARTURE PROCEDURES  
AMDT 3A 16203 (FAA)

TAKEOFF OBSTACLE NOTES: **Rwy 2**, multiple trees and road beginning 440' from DER, 257' left of centerline, up to 100' AGL/1053' MSL. Multiple trees beginning 672' from DER, 17' right of centerline, up to 100' AGL/1017' MSL. **Rwy 20**, multiple trees beginning 189' from DER, 494' left of centerline, up to 100' AGL/1009' MSL. Multiple poles and trees beginning 323' from DER, 364' right of centerline, up to 100' AGL/1026' MSL. Building 1195' from DER, 512' right of centerline, 50' AGL/972' MSL.

## GREENE COUNTY-LEWIS A JACKSON RGNL (I19)

TAKEOFF MINIMUMS AND (OBSTACLE)  
DEPARTURE PROCEDURES  
AMDT 1 07074 (FAA)

TAKEOFF OBSTACLE NOTES: **Rwy 25**, multiple trees and tower beginning 469' from DER, 499' left of centerline, up to 96' AGL/998' MSL. Multiple trees and towers beginning 839' from DER, 460' right of centerline, up to 75' AGL/1005' MSL. **Rwy 7**, tree 1449' from DER, 592' right of centerline, 51' AGL/988' MSL.

## JAMES M COX DAYTON INTL (DAY)

TAKEOFF MINIMUMS AND (OBSTACLE)  
DEPARTURE PROCEDURES  
AMDT 4 17117 (FAA)

TAKEOFF MINIMUMS: **Rwy 18**, 300-1 or std. w/min. climb of 305 per NM to 1300.

TAKEOFF OBSTACLE NOTES: **Rwy 6R**, tower 3128' from DER, 1114' right of centerline, 140' AGL/1101' MSL. **Rwy 18**, trees beginning 1033' from DER, 77' right of centerline, up to 1048' MSL. Tree 1047' from DER, 38' left of centerline, 1039' MSL. Tree 1049' from DER, 326' left of centerline, 1040' MSL. Tree 1050' from DER, 437' left of centerline, 1041' MSL. Trees beginning 1051' from DER, 192' left of centerline, up to 1047' MSL. Wind indicator on building, steeple, pole, ant on building, tree beginning 1141' from DER, 195' left of centerline, up to 1049' MSL. Trees beginning 1378' from DER, 325' left of centerline, up to 1056' MSL. Trees beginning 1618' from DER, 244' left of centerline, up to 1060' MSL. Tree 1631' from DER, 558' right of centerline, 1054' MSL. Tree 1711' from DER, 185' left of centerline, 1066' MSL. Trees beginning 1785' from DER, 311' left of centerline, up to 1072' MSL. Trees beginning 1825' from DER, 210' left of centerline, up to 74' AGL/1079' MSL. Tree 1832' from DER, 563' right of centerline, 1060' MSL. Trees beginning 2013' from DER, 139' right of centerline, up to 1072' MSL. Trees beginning 2322' from DER, 958' right of centerline, up to 1073' MSL. Tree 2378' from DER, 916' left of centerline, 1089' MSL. Trees beginning 2379' from DER, 141' left of centerline, up to 96' AGL/1095' MSL. Tree 2574' from DER, 1075' right of centerline, 1094' MSL. Tree 2578' from DER, 1098' right of centerline, 89' AGL/1096' MSL. Trees beginning 2923' from DER, 412' left of centerline, up to 1098' MSL. Tank 4227' from DER, 1469' left of centerline, 184' AGL/1168' MSL. **Rwy 24L**, vehicles on road 200' from DER, crossing runway centerline, up to 15' AGL/1021' MSL. Tree 992' from DER, 522' left of centerline, 1049' MSL. Tree 1139' from DER, 740' left of centerline, 1056' MSL. Trees beginning 1722' from DER, 527' left of centerline, up to 1061' MSL. **Rwy 36**, airfield light beginning 5' from DER, 4' right of centerline, up to 2' AGL/992' MSL. Tree 1947' from DER, 939' left of centerline, 1040' MSL.

04 JAN 2018 to 01 FEB 2018

04 JAN 2018 to 01 FEB 2018

# TAKEOFF MINIMUMS, (OBSTACLE) DEPARTURE PROCEDURES, AND DIVERSE VECTOR AREA (RADAR VECTORS)

17285

EC-2

**TAKEOFF MINIMUMS, (OBSTACLE) DEPARTURE PROCEDURES, AND  
DIVERSE VECTOR AREA (RADAR VECTORS)**

17285

**DEFIANCE, OH**

**DEFIANCE MEMORIAL (DFI)**  
TAKEOFF MINIMUMS AND (OBSTACLE)  
DEPARTURE PROCEDURES  
ORIG 11069 (FAA)

TAKEOFF OBSTACLE NOTES: **Rwy 12**, trees beginning 398' from DER, 155' right of centerline, up to 50' AGL/749' MSL. Terrain beginning 62' from DER, 1' right of centerline, up to 706' MSL. Vehicle on road 833' from DER, 286' left of centerline, up to 15' AGL/724' MSL. **Rwy 30**, trees and power lines beginning 527' from DER, beginning 246' left to right of centerline, up to 50' AGL/759' MSL. Vehicle on road beginning 527' from DER, 246' left to right of centerline, up to 15' AGL/724' MSL. Terrain beginning 36' from DER, 17' right of centerline, up to 712' MSL. Terrain beginning 116' from DER, 353' left of centerline, up to 712' MSL.

**DELAWARE, OH**

**DELAWARE MUNI-JIM MOORE FIELD  
(DLZ)**

TAKEOFF MINIMUMS AND (OBSTACLE)  
DEPARTURE PROCEDURES  
AMDT 1 17005 (FAA)

TAKEOFF OBSTACLE NOTES: **Rwy 10**, tree 884' from DER, 717' left of centerline, 1014' MSL. Transmission line/tower 1179' from DER, 289' right of centerline, 48' AGL/987' MSL. Tree 1808' from DER, 506' left of centerline, 996' MSL. **Rwy 28**, windsock 7' from DER, 443' right of centerline, 9' AGL/950' MSL. Ground 35' from DER, 189' left of centerline, 950' MSL. Transmission line/tower 992' from DER, 699' left of centerline, 61' AGL/1005' MSL. Transmission line/tower 987' from DER, 599' left of centerline, 45' AGL/987' MSL. Transmission line/tower 1126' from DER, 695' right of centerline, 45' AGL/988' MSL. Tree 1233' from DER, 742' right of centerline, 990' MSL.

**EAST LIVERPOOL, OH**

**COLUMBIANA COUNTY (02G)**  
TAKEOFF MINIMUMS AND (OBSTACLE)  
DEPARTURE PROCEDURES  
AMDT 2A 17229 (FAA)

TAKEOFF MINIMUMS: **Rwy 25**, 600-1/4 or std. w/min. climb gradient of 445' per NM to 1700.  
DEPARTURE PROCEDURE: **Rwy 25**, climb heading of 249° to 1700 before turning right.

TAKEOFF OBSTACLE NOTES: **Rwy 7**, trees beginning abeam DER, 392' left of centerline, up to 71' AGL/1224' MSL. Tree 156' from DER, 449' right of centerline, 1205' MSL. Trees beginning 164' from DER, 11' left of centerline, up to 101' AGL/1231' MSL. Trees beginning 182' from DER, 75' right of centerline, up to 1218' MSL. Trees beginning 1892' from DER, 635' right of centerline, up to 1219' MSL. Tree 2212' from DER, 850' right of centerline, 1221' MSL. Tree 2338' from DER, 840' right of centerline, 1224' MSL. Tree 2859' from DER, 506' left of centerline, 1236' MSL. **Rwy 25**, ground 7' from DER, 401' right of centerline, 1152' MSL. Ground beginning 104' from DER, 297' right of centerline, up to 1159' MSL. Ground 118' from DER, 256' left of centerline, 1148' MSL. Trees beginning 141' from DER, 28' left of centerline, up to 82' AGL/1226' MSL. Trees beginning 899' from DER, 84' right of centerline, up to 1220' MSL. Tree 3443' from DER, 611' right of centerline, 1240' MSL. Tree 3499' from DER, 359' right of centerline, 1242' MSL. Tree 3531' from DER, 1397' right of centerline, 1247' MSL. Tree 3533' from DER, 935' right of centerline, 1276' MSL. Trees beginning 3535' from DER, 161' right of centerline, up to 1287' MSL. Trees beginning 3653' from DER, 391' right of centerline, up to 1288' MSL. Trees beginning 3701' from DER, 61' right of centerline, up to 1290' MSL. Trees beginning 3748' from DER, 231' right of centerline, up to 1315' MSL. Tree 3748' from DER, 891' right of centerline, 1298' MSL. Trees beginning 3801' from DER, 44' right of centerline, up to 1322' MSL. Trees beginning 3854' from DER, 358' right of centerline, up to 1332' MSL. Tree, ground beginning 3907' from DER, 282' right of centerline, up to 1350' MSL. Trees beginning 4863' from DER, 804' left of centerline, up to 1279' MSL. Trees beginning 5051' from DER, 651' left of centerline, up to 1292' MSL. Trees beginning 5174' from DER, 546' left of centerline, up to 1296' MSL. Trees beginning 5280' from DER, 328' left of centerline, up to 1311' MSL. Trees beginning 5491' from DER, 59' left of centerline, up to 1316' MSL. Trees beginning 5860' from DER, 639' right of centerline, up to 1353' MSL. Trees beginning 5860' from DER, 120' right of centerline, up to 1355' MSL. Trees beginning 5966' from DER, 1071' right of centerline, up to 1356' MSL. Trees beginning 6019' from DER, 795' right of centerline, up to 1357' MSL. Trees beginning 6072' from DER, 15' right of centerline, up to 1364' MSL. Trees beginning 6072' from DER, 203' right of centerline, up to 1365' MSL. Trees beginning 1 NM from DER, 26' right of centerline, up to 1389' MSL. Trees beginning 1 NM from DER, 25' left of centerline, up to 1325' MSL. Trees beginning 1 NM from DER, 332' right of centerline, up to 1393' MSL. Trees beginning 1 NM from DER, 84' right of centerline, up to 1406' MSL. Tree, ground beginning 1 NM from DER, 430' right of centerline, up to 76' AGL/1418' MSL. Trees beginning 1 NM from DER, 943' right of centerline, up to 1416' MSL. Transmission tower, tree, ground beginning 1.1 NM from DER, 687' right of centerline, up to 122' AGL/1450' MSL. Tree 1.4 NM from DER, 2655' left of centerline, 1359' MSL. Tree 1.4 NM from DER, 2747' left of centerline, 1360' MSL.

04 JAN 2018 to 01 FEB 2018

04 JAN 2018 to 01 FEB 2018

**TAKEOFF MINIMUMS, (OBSTACLE) DEPARTURE PROCEDURES, AND  
DIVERSE VECTOR AREA (RADAR VECTORS)**

17285

L10

EC-2

**TAKEOFF MINIMUMS, (OBSTACLE) DEPARTURE PROCEDURES, AND  
DIVERSE VECTOR AREA (RADAR VECTORS)**

17285

**ELKHART, IN****ELKHART MUNI (EKM)**

**TAKEOFF MINIMUMS AND (OBSTACLE)  
DEPARTURE PROCEDURES  
ORIG 11265 (FAA)**

**TAKEOFF OBSTACLE NOTES:** **Rwy 9**, trees beginning 2039' from DER, 768' right of centerline, up to 68' AGL/845' MSL. Trees beginning 2649' from DER, 774' left of centerline, up to 90' AGL/867' MSL. **Rwy 18**, trees and spire beginning 592' from DER, 63' right of centerline, up to 63' AGL/835' MSL. Trees beginning 508' from DER, 87' left of centerline, up to 71' AGL/843' MSL. **Rwy 27**, trees beginning 1195' from DER, 241' right of centerline, up to 90' AGL/861' MSL. Trees beginning 1714' from DER, 49' left of centerline, up to 89' AGL/860' MSL. **Rwy 36**, tree and building beginning 845' from DER, 212' right of centerline, up to 58' AGL/836' MSL. Trees beginning 1193' from DER, 240' left of centerline, up to 61' AGL/839' MSL.

**ELYRIA, OH****ELYRIA (1G1)**

**TAKEOFF MINIMUMS AND (OBSTACLE)  
DEPARTURE PROCEDURES**

**TAKEOFF OBSTACLE NOTES:** **Rwy 9**, road 1198' from DER, 275' left of centerline, 15' AGL/774' MSL. Tree 2077' from DER, 778' right of centerline, 100' AGL/859' MSL. **Rwy 27**, tree 68' from DER, 237' left of centerline, 100' AGL/859' MSL. Tree 527' from DER, 454' right of centerline, 100' AGL/854' MSL.

**EVANSVILLE, IN****EVANSVILLE RGNL (EVV)**

**TAKEOFF MINIMUMS AND (OBSTACLE)  
DEPARTURE PROCEDURES  
AMDT 9 14289 (FAA)**

**TAKEOFF MINIMUMS:** **Rwy 9**, 300-1 or std. w/min. climb of 650' per NM to 700. **Rwy 27**, 300-1½ or std. w/min. climb of 402' per NM to 800. **Rwy 36**, 300-1½ or std. w/min. climb of 615' per NM to 700.

**TAKEOFF OBSTACLE NOTES:** **Rwy 9**, fence 293' from DER, 294' right of centerline, 9' AGL/399' MSL. Train on railroad tracks and vehicles on roadway beginning 610' from DER, 291' right of centerline, up to 23' AGL/424' MSL. Building 1446' from DER, 84' right of centerline, 37' AGL/445' MSL. Trees and vehicles on roadway beginning 2070' from DER, 905' right of centerline, up to 100' AGL/583' MSL. Trees beginning 3093' from DER, 385' left of centerline, up to 91' AGL/516' MSL. Trees beginning 4145' from DER, 1575' right of centerline, up to 100' AGL/509' MSL. **Rwy 18**, electrical system 10' from DER, 80' right of centerline, 13' AGL/396' MSL. Vehicles on roadway beginning 265' from DER, left and right of centerline, up to 15' AGL/398' MSL. Trains on railroad tracks beginning 328' from DER, 17' left of centerline, up to 23' AGL/412' MSL. Buildings beginning 560' from DER, 137' right of centerline, up to 53' AGL/447' MSL. Trees beginning 1595' from DER, 162' left of centerline, up to 51' AGL/433' MSL. Tower 4136' from DER, 1569' left of centerline, 132' AGL/513' MSL. **Rwy 22**, weather sensor 141' from DER, 458' left of centerline, 18' AGL/458' MSL. GS building 146' from DER, 401' left of centerline, 10' AGL/392' MSL. Tower 165' from DER, 399' left of centerline, 45' AGL/429' MSL. Aircraft on taxiway beginning 1305' from DER, 833' right of centerline, up to 70' AGL/452' MSL. **Rwy 27**, vehicles on roadway and trains on railroad tracks beginning 295' from DER, left and right of centerline, up to 23' AGL/407' MSL. Sign 389' from DER, 228' right of centerline, 21' AGL/401' MSL. Pole and trees beginning 710' from DER, left and right of centerline, up to 102' AGL/559' MSL. Trees beginning 4114' from DER, left and right of centerline, up to 124' AGL/617' MSL. Towers beginning 1.3 NM from DER, 1157' left of centerline, up to 181' AGL/649' MSL. Trees beginning 1.33 NM from DER, 442' left of centerline, up to 112' AGL/610' MSL. **Rwy 36**, trees beginning 1389' from DER, 702' left of centerline, up to 100' AGL/539' MSL. Trees beginning 2160' from DER, 479' right of centerline, up to 105' AGL/567' MSL. Trees beginning 4224' from DER, 1025' right of centerline, up to 110' AGL/597' MSL. Trees beginning 6131' from DER, 1152' right of centerline, up to 126' AGL/618' MSL. Trees beginning 1.1 NM from DER, 1556' right of centerline, up to 100' AGL/579' MSL.

04 JAN 2018 to 01 FEB 2018

04 JAN 2018 to 01 FEB 2018

**TAKEOFF MINIMUMS, (OBSTACLE) DEPARTURE PROCEDURES, AND  
DIVERSE VECTOR AREA (RADAR VECTORS)**

17285

EC-2

# TAKEOFF MINIMUMS, (OBSTACLE) DEPARTURE PROCEDURES, AND DIVERSE VECTOR AREA (RADAR VECTORS)

17285

## FINDLAY, OH

### FINDLAY (FDY)

TAKEOFF MINIMUMS AND (OBSTACLE)  
DEPARTURE PROCEDURES  
ORIG 07242 (FAA)

TAKEOFF OBSTACLE NOTES: **Rwy 7**, road 210' from DER, on runway centerline, 15' AGL/824' MSL. Multiple trees beginning 210' from DER, 111' right of centerline, up to 81' AGL/885' MSL. Building 2498' from DER, 878' right of centerline, 113' AGL/921' MSL. **Rwy 18**, tree 2786' from DER, 151' left of centerline, 72' AGL/876' MSL. **Rwy 25**, multiple elevators beginning 1825' from DER, 727' right of centerline, 78' AGL/869' MSL. Tree 4566' from DER, 687' right of centerline, 100' AGL/909' MSL. **Rwy 36**, pole 1192' from DER, 742' right of centerline, 36' AGL/835' MSL. Tree 1560' from DER, 499' left of centerline, 53' AGL/847' MSL.

## FORT WAYNE, IN

### FORT WAYNE INTL (FWA)

TAKEOFF MINIMUMS AND (OBSTACLE)  
DEPARTURE PROCEDURES  
AMDT 3 15260 (FAA)

TAKEOFF OBSTACLE NOTES: **Rwy 5**, lighted structures beginning 9' from DER, left and right of centerline, up to 3' AGL/800' MSL. Fence and trees beginning 152' from DER, 521' right of centerline, up to 42' AGL/842' MSL. Railroad 834' from DER, 582' right of centerline, 23' AGL/820' MSL. Trees beginning 927' from DER, 499' left of centerline, 40' AGL/836' MSL. **Rwy 9**, lighted structures beginning 11' from DER, left and right of centerline, up to 2' AGL/794' MSL. Pole 86' from DER, 442' right of centerline, 28' AGL/820' MSL. Pole 380' from DER, 505' right of centerline, 32' AGL/822' MSL. Tower 3124' from DER, 1109' left of centerline, 111' AGL/910' MSL. **Rwy 14**, lighted structures beginning 9' from DER, left and right of centerline, up to 2' AGL/797' MSL. Tree 1079' from DER, 667' left of centerline, 23' AGL/825' MSL. **Rwy 23**, lighted structures beginning 8' from DER, left and right of centerline, up to 2' AGL/815' MSL. **Rwy 27**, lighted structures beginning 9' from DER, 48' left of centerline, up to 2' AGL/800' MSL. fences beginning 28' from DER, 470' right of centerline, up to 6' AGL/804' MSL. Tower 194' from DER, 523' left of centerline, 19' AGL/809' MSL. Obstruction light 370' from DER, 230' left of centerline, 14' AGL/812' MSL. Trees beginning 3587' from DER, left and right of centerline, up to 104' AGL/910' MSL. **Rwy 32**, lighted structures beginning 9' from DER, left and right of centerline, up to 2' AGL/803' MSL. Trees beginning 3672' from DER, 611' left of centerline, up to 100' AGL/901' MSL.

## FORT WAYNE, IN (CON'T)

### SMITH FIELD (SMD)

TAKEOFF MINIMUMS AND (OBSTACLE)  
DEPARTURE PROCEDURES  
AMDT 5 10322 (FAA)

TAKEOFF MINIMUMS: **Rwy 23**, 800-3 or std. with a min. climb of 420' per NM to 1900.  
DEPARTURE PROCEDURE: **Rwy 13**, climb on heading between 313° CW to 185° from DER or climb on heading between 313° CW to 133° from DER to 2700 before proceeding on course or min. climb of 250' per NM to 2000 for all other courses. **Rwy 23**, climb on heading 236° to 1900 before proceeding on course. **Rwy 31**, climb on heading between 313° CW to 133° from DER or climb on heading between 250° CW to 313° from DER to 2700 before proceeding on course or min. climb of 250' per NM to 1900 for all other courses.

TAKEOFF OBSTACLE NOTES: **Rwy 5**, vehicle on road 465' from DER, on centerline, 15' AGL/844' MSL. Trees, light poles, flag poles, power poles, buildings, bus garages and cell tower beginning 345' from DER, 34' right of centerline, up to 153' AGL/974' MSL. Trees, buildings and light poles beginning 234' from DER, 11' left of centerline, up to 72' AGL/896' MSL. **Rwy 13**, vehicle on road 458' from DER, on centerline, 15' AGL/842' MSL. Trees, houses and light pole beginning 21' from DER, 38' right of centerline, up to 100' AGL/929' MSL. Trees, buildings, power poles, hanger, terminal, light pole and flag pole beginning 330' from DER, 25' left of centerline, up to 128' AGL/936' MSL. **Rwy 23**, power poles, light poles, trees, building, house and shed beginning 469' from DER, 6' right of centerline, up to 82' AGL/909' MSL. Trees, houses and light poles beginning 193' from DER, 43' left of centerline, up to 81' AGL/906' MSL. **Rwy 31**, trees, buildings, power poles, garages, light pole and antenna beginning 237' from DER, 30' right of centerline, up to 95' AGL/936' MSL. Trees and vert tank beginning 488' from DER, 202' left of centerline, up to 73' AGL/910' MSL.

## FOSTORIA, OH

### FOSTORIA METROPOLITAN (FZI)

TAKEOFF MINIMUMS AND (OBSTACLE)  
DEPARTURE PROCEDURES  
AMDT 1 10154 (FAA)

TAKEOFF OBSTACLE NOTES: **Rwy 9**, trees beginning 343' from DER, 584' left of centerline, up to 74' AGL/823' MSL. Trees beginning 26' from DER, 277' right of centerline, up to 75' AGL/820' MSL. **Rwy 27**, trees beginning 938' from DER, 342' left of centerline, up to 100' AGL/859' MSL. Trees beginning 379' from DER, 444' right of centerline, up to 64' AGL/806' MSL. Building 2' from DER, 500' left of centerline, 8' AGL/758' MSL. Building 262' from DER, 523' right of centerline, 34' AGL/776' MSL. SILO 292' from DER, 376' right of centerline, 36' AGL/778' MSL. Pole 898' from DER, 413' right of centerline, 39' AGL/778' MSL. Power pole 961' from DER, 562' right of centerline, 48' AGL/790' MSL.

04 JAN 2018 to 01 FEB 2018

04 JAN 2018 to 01 FEB 2018

# TAKEOFF MINIMUMS, (OBSTACLE) DEPARTURE PROCEDURES, AND DIVERSE VECTOR AREA (RADAR VECTORS)

17285

EC-2

# TAKEOFF MINIMUMS, (OBSTACLE) DEPARTURE PROCEDURES, AND DIVERSE VECTOR AREA (RADAR VECTORS)

17285

## FRANKFORT, IN

### FRANKFORT MUNI (FKR)

TAKEOFF MINIMUMS AND (OBSTACLE)  
DEPARTURE PROCEDURES  
ORIG 10154 (FAA)

TAKEOFF OBSTACLE NOTES: **Rwy 4**, vehicles on highway, beginning 148' from DER, left to right of centerline, 17' AGL/894' MSL. Building 442' from DER, 601' right of centerline, 40' AGL/897' MSL. Building 606' from DER, 373' left of centerline, 40' AGL/917' MSL. Plant 3169' from DER, 712' right of centerline, 87' AGL/942' MSL. **Rwy 9**, crops 389' from DER, left to right of centerline, 10' AGL/872' MSL. **Rwy 22**, crops 200' from DER, left to right of centerline, 10' AGL/867' MSL. Vehicles on roadway beginning 369' from DER, 583' right of centerline, 17' AGL/876' MSL. **Rwy 27**, crops 299' from DER, left to right of centerline, 10' AGL/867' MSL. Vehicles on roadway 743' from DER, left and right of centerline, 17' AGL/876' MSL.

## FREMONT, OH

### FREMONT (14G)

TAKEOFF MINIMUMS AND (OBSTACLE)  
DEPARTURE PROCEDURES  
AMDT 2 09295 (FAA)

TAKEOFF MINIMUMS: **Rwys 18,36**, NA-Environmental. TAKEOFF OBSTACLE NOTES: **Rwy 9**, train 268' from DER, 516' right of centerline, 23' AGL/677' MSL. Trees beginning 3269' from DER, 1265' right of centerline, up to 100' AGL/754' MSL. Multiple trees and buildings beginning 320' from DER, left and right of centerline, up to 100' AGL/749' MSL. **Rwy 27**, road 65' from DER, 4' right of centerline, 15' AGL/669' MSL. Trees beginning 2230' from DER, 834' left of centerline, up to 100' AGL/754' MSL.

## SANDUSKY COUNTY RGNL (S24)

TAKEOFF MINIMUMS AND (OBSTACLE)  
DEPARTURE PROCEDURES  
ORIG 11237 (FAA)

TAKEOFF OBSTACLE NOTES: **Rwy 6**, REILS 39' from DER, 93' right of centerline, 8' AGL/659' MSL. REILS 39' from DER, 93' left of centerline, 7' AGL/658' MSL. Trees beginning 796' from DER, 709' left of centerline, up to 91' AGL/737' MSL. **Rwy 24**, REILS 41' from DER, 94' right of centerline, 7' AGL/668' MSL. REILS 41' from DER, 93' left of centerline, 7' AGL/668' MSL. Trees beginning 1569' from DER, left and right of centerline, up to 145' AGL/786' MSL.

## FRENCH LICK, IN

### FRENCH LICK MUNI (FRH)

TAKEOFF MINIMUMS AND (OBSTACLE)  
DEPARTURE PROCEDURES  
ORIG 08101 (FAA)

TAKEOFF OBSTACLE NOTES: **Rwy 8**, Terrain 59' from DER, 86' left of centerline, 0' AGL/799' MSL. Trees beginning 184' from DER, 391' left of centerline, up to 100' AGL/889' MSL. Trees beginning 215' from DER, 148' right of centerline, up to 100' AGL/849' MSL. **Rwy 26**, Trees beginning 429' from DER, 90' left of centerline, up to 100' AGL/849' MSL. Trees beginning 580' from DER, 57' right of centerline, up to 100' AGL/909' MSL.

## GALION, OH

### GALION MUNI (GQQ)

TAKEOFF MINIMUMS AND (OBSTACLE)  
DEPARTURE PROCEDURES  
ORIG 11237 (FAA)

TAKEOFF OBSTACLE NOTES: **Rwy 5**, trees beginning 354' from DER, 335' right of centerline, up to 50' AGL/1269' MSL. **Rwy 23**, vehicles on road beginning 0' from DER, 348' right of centerline, up to 15' AGL/1244' MSL. Vehicles on road beginning 0' from DER, 362' left of centerline, up to 17' AGL/1236' MSL. Train and power lines 0' from DER, 351' left of centerline, up to 30' AGL/1252' MSL. Trees beginning 341' from DER, right and left of centerline, up to 50' AGL/1279' MSL.

## GALLIPOLIS, OH

### GALLIA-MEIGS RGNL (GAS)

TAKEOFF MINIMUMS AND (OBSTACLE)  
DEPARTURE PROCEDURES  
AMDT 2A 07270 (FAA)

TAKEOFF MINIMUMS: **Rwy 5**, 500-1. **Rwy 23**, 800-3 or std. w/ min. climb of 331' per NM to 1700. DEPARTURE PROCEDURE: **Rwy 5**, climb straight ahead to 2100 before proceeding on course. **Rwy 23**, climb via 215° track to 1500 before proceeding on course.

## GARY, IN

### GARY/CHICAGO INTL (GY)

TAKEOFF MINIMUMS AND (OBSTACLE)  
DEPARTURE PROCEDURES  
AMDT 8 15176 (FAA)

TAKEOFF MINIMUMS: **Rwy 2**, 300-1½ or std. with min. climb of 323' per NM to 900. DEPARTURE PROCEDURE: **Rwy 20**, climb heading 203° to 1300 before proceeding on course. TAKEOFF OBSTACLE NOTES: **Rwy 2**, tree, pole, building and vehicles on road beginning 554' from DER, 264' right of centerline, up to 26' AGL/617' MSL. Tower 3432' from DER, 1125' right of centerline, 120' AGL/708' MSL. Stacks and towers beginning 4434' from DER, 1004' right of centerline, up to 201' AGL/791' MSL. Tree 1489' from DER, 236' left of centerline, 56' AGL/647' MSL. Towers beginning 4598' from DER, 1080' left of centerline, up to 139' AGL/731' MSL. Stacks and tower beginning 5921' from DER, 460' left of centerline, up to 236' AGL/823' MSL. Vehicles on road 571' from DER, on runway centerline, 15' AGL/605' MSL. **Rwy 12**, trees and poles beginning 790' from DER, 221' right of centerline, up to 86' AGL/685' MSL. trees beginning 1617' from DER, 743' left of centerline, up to 65' AGL/656' MSL. Towers beginning 4246' from DER, 444' left of centerline, up to 105' AGL/700' MSL. **Rwy 20**, trees and poles beginning 651' from DER, 108' right of centerline, up to 96' AGL/685' MSL. Trees, poles and vehicles on road beginning 884' from DER, 26' left of centerline, up to 63' AGL/658' MSL. Vehicles on road 1048' from DER, on runway centerline, 17' AGL/631' MSL. **Rwy 30**, tree and poles beginning 2021' from DER, 390' right of centerline, up to 105' AGL/710' MSL. Terrain 137' from DER, 351' left of centerline, 22' AGL/612' MSL. Poles and road sign beginning 1263' from DER, 60' left of centerline, up to 49' AGL/638' MSL.

04 JAN 2018 to 01 FEB 2018

04 JAN 2018 to 01 FEB 2018

# TAKEOFF MINIMUMS, (OBSTACLE) DEPARTURE PROCEDURES, AND DIVERSE VECTOR AREA (RADAR VECTORS)

17285

EC-2

# TAKEOFF MINIMUMS, (OBSTACLE) DEPARTURE PROCEDURES, AND DIVERSE VECTOR AREA (RADAR VECTORS)

17285

## GEORGETOWN, OH

BROWN COUNTY (GEO)

TAKEOFF MINIMUMS AND (OBSTACLE)  
DEPARTURE PROCEDURES  
AMDT 2 10238 (FAA)

TAKEOFF OBSTACLE NOTES: **Rwy 18**, vehicle on road beginning 430' from DER, 116' right of centerline, up to 15' AGL/974' MSL. Vehicle on road beginning 400' from DER, 155' left of centerline, up to 15' AGL/974' MSL. **Rwy 36**, trees 328' from DER, 232' right of centerline, up to 100' AGL/1059' MSL. Trees 301' from DER, 452' left of centerline, up to 100' AGL, 1069' MSL.

## GOSHEN, IN

GOSHEN MUNI (GSH)

TAKEOFF MINIMUMS AND (OBSTACLE)  
DEPARTURE PROCEDURES  
ORIG 08157 (FAA)

TAKEOFF OBSTACLE NOTES: **Rwy 5**, Transmission tower, 4050' from DER, 1247' right of centerline, 116' AGL/941' MSL. **Rwy 9**, Post 42' from DER, 251' right of centerline, 12' AGL/831' MSL. Pole 1030' from DER, 619' right of centerline, 37' AGL/862' MSL. Pole 986' from DER, 465' left of centerline, 30' AGL/855' MSL. Trees beginning 2493' from DER, 515' left of centerline, up to 100' AGL/966' MSL. **Rwy 23**, Daymarker 95' from DER, 85' right of centerline, 4' AGL/818' MSL. Terrain 3' from DER, 42' left of centerline, 0' AGL/821' MSL. Sign 47' from DER, 500' left of centerline, 3' AGL/822' MSL. Terrain 61' from DER, 418' left of centerline, 0' AGL/821' MSL. Road & vehicle 933' from DER, 736' left of centerline, 17' AGL/841' MSL. **Rwy 27**, Trees beginning 2173' from DER, 210' right of centerline, up to 100' AGL/914' MSL. Trees beginning 2072' from DER, 124' left of centerline, up to 100' AGL/914' MSL.

## GREENCASTLE, IN

PUTNAM COUNTY RGNL (GPC)

TAKEOFF MINIMUMS AND (OBSTACLE)  
DEPARTURE PROCEDURES  
AMDT 1 17005 (FAA)

TAKEOFF OBSTACLE NOTES: **Rwy 18**, grd 91' from DER, 299' left of centerline, 817' MSL. Fence 113' from DER, 306' left of centerline, 3' AGL/822' MSL. Fence 199' from DER, 307' left of centerline, 7' AGL/825' MSL. Trees, poles, and bldgs beginning 538' from DER, 373' right of centerline, up to 873' MSL. Tree 997' from DER, 266' left of centerline, 855' MSL. Tree 1015' from DER, 360' left of centerline, 859' MSL. Tree 2728' from DER, 1049' right of centerline, 894' MSL. **Rwy 36**, grd 4' from DER, 486' right of centerline, 850' MSL. Trees beginning 656' from DER, 596' right of centerline, up to 910' MSL. Trees and bldg beginning 1269' from DER, 206' right of centerline, up to 912' MSL. Trees, spire, and bldg beginning 1861' from DER, 217' right of centerline, up to 67' AGL/918' MSL. Tree 1862' from DER, 535' left of centerline, 42' AGL/889' MSL. Trees beginning 2227' from DER, 199' left of centerline, up to 64' AGL/912' MSL. Tree and bldg beginning 2334' from DER, 18' left of centerline, up to 913' MSL.

## GREENSBURG, IN

GREENSBURG MUNI (I34)

TAKEOFF MINIMUMS AND (OBSTACLE)  
DEPARTURE PROCEDURES  
AMDT 1A 09099 (FAA)  
TAKEOFF MINIMUMS: **Rwy 36**, 300-1.

## GRIFFITH, IN

GRIFFITH - MERRILLVILLE (05C)

TAKEOFF MINIMUMS AND (OBSTACLE)  
DEPARTURE PROCEDURES  
AMDT 4 07074 (FAA)

TAKEOFF MINIMUMS: **Rwy 8**, 300-1 or std. w/ min. climb of 502' per NM to 1000.  
TAKEOFF OBSTACLE NOTES: **Rwy 8**, multiple trees, and poles beginning 5' from DER, 165' left of centerline, up to 100' AGL/744' MSL. Tower 4170' from DER, 1386' left of centerline, 259' AGL/900' MSL. Multiple trees, and poles beginning 125' from DER, 68' right of centerline, up to 100' AGL/744' MSL. **Rwy 26**, multiple poles, trees, and building beginning 146' from DER, 21' right of centerline, up to 100' AGL/744' MSL. Multiple trees, and poles beginning 25' from DER, 84' left of centerline, up to 100' AGL/744' MSL.

## HAMILTON, OH

BUTLER COUNTY RGNL (HAO)

TAKEOFF MINIMUMS AND (OBSTACLE)  
DEPARTURE PROCEDURES  
AMDT 4 11069 (FAA)

TAKEOFF MINIMUMS: **Rwy 11**, 800-3 or std. w/min. climb of 240' per NM to 1700. **Rwy 29**, 300-1 or std. w/min. climb of 480' per NM to 900.  
DEPARTURE PROCEDURE: **Rwy 11**, climb heading 115° to 1700 before proceeding on course.  
TAKEOFF OBSTACLE NOTES: **Rwy 11**, trees beginning 940' from DER, 129' right of centerline, up to 67' AGL/717' MSL. Poles beginning 2963' from DER, 168' left of centerline, up to 61' AGL/711' MSL. **Rwy 29**, bush 155' from DER, 277' right of centerline, 7' AGL/641' MSL. Building 533' from DER, 375' left of centerline, 37' AGL/657' MSL. Antenna 748' from DER, 526' left of centerline, 61' AGL/690' MSL. Trees beginning 964' from DER, 104' right of centerline, up to 65' AGL/814' MSL. Trees beginning 1123' from DER, 59' left of centerline, up to 69' AGL/721' MSL. Vehicle on road 1947' from DER, 418' right of centerline, 15' AGL/703' MSL. Pole 2218' from DER, 421' right of centerline, 12' AGL/721' MSL. Buildings beginning 2283' from DER, 479' right of centerline, up to 24' AGL/724' MSL.

## HARRISON, OH

CINCINNATI WEST (I67)

TAKEOFF MINIMUMS AND (OBSTACLE)  
DEPARTURE PROCEDURES  
AMDT 2 07186 (FAA)

TAKEOFF MINIMUMS: **Rwy 1**, 500-3 or std. w/ min. climb of 385' per NM to 1200. **Rwys 9, 27**, NA-obstacles. **Rwy 19**, 500-3 or std. w/ min. climb of 253' per NM to 1300.  
TAKEOFF OBSTACLE NOTES: **Rwy 1**, multiple trees beginning 5364' from DER, 180' right of centerline, up to 100' AGL/915' MSL. Multiple trees beginning 5596' from DER, 1180' left of centerline up to 100' AGL/909' MSL. Multiple trees beginning 1.5 NM from DER, 2293' left of centerline, up to 200' AGL/849' MSL. **Rwy 19**, road 23' from DER, on centerline, 15' AGL/599' MSL.

# TAKEOFF MINIMUMS, (OBSTACLE) DEPARTURE PROCEDURES, AND DIVERSE VECTOR AREA (RADAR VECTORS)

17285

EC-2

04 JAN 2018 to 01 FEB 2018

04 JAN 2018 to 01 FEB 2018

# TAKEOFF MINIMUMS, (OBSTACLE) DEPARTURE PROCEDURES, AND DIVERSE VECTOR AREA (RADAR VECTORS)

17285

## HILLSBORO, OH

### HIGHLAND COUNTY (HOC)

#### TAKEOFF MINIMUMS AND (OBSTACLE) DEPARTURE PROCEDURES

AMDT 3 13234 (FAA)

TAKEOFF MINIMUMS: **Rwy 5**, 300-1½ or std. w/min.  
climb of 281' per NM to 1300.

TAKEOFF OBSTACLE NOTES: **Rwy 5**, trees beginning 21' from DER, 308' left of centerline, up to 83' AGL/1023' MSL. Trees beginning 105' from DER, 323' right of centerline, up to 83' AGL/1023' MSL. Trees beginning 1170' from DER, 41' left of centerline, up to 112' AGL/1012' MSL. Trees beginning 1271' from DER, 13' right of centerline, up to 122' AGL/1022' MSL. Trees beginning 4653' from DER, 32' right of centerline, up to 102' AGL/1062' MSL. Tree 7395' from DER, 2474' right of centerline, 119' AGL/1199' MSL. **Rwy 23**, trees beginning 49' from DER, 427' left of centerline, up to 12' AGL/999' MSL. Pole 191' from DER, 344' left of centerline, 49' AGL/1009' MSL.

## HUNTINGBURG, IN

### HUNTINGBURG (HNB)

#### TAKEOFF MINIMUMS AND (OBSTACLE) DEPARTURE PROCEDURES

AMDT 9 3001.1.

## HUNTINGTON, IN

### HUNTINGTON MUNI (HHG)

#### TAKEOFF MINIMUMS AND (OBSTACLE) DEPARTURE PROCEDURES

AMDT 2 17145 (FAA)

TAKEOFF OBSTACLE NOTES: **Rwy 9**, tree 2' from DER, 324' right of centerline, 854' MSL. Pole 47' from DER, 198' left, 23' AGL/812' MSL. Trees beginning 291' from DER, 9' left of centerline, up to 882' MSL. Trees beginning 745' from DER, 3' right of centerline, up to 838' MSL. Trees beginning 888', 17' right of centerline, up to 848' MSL. Trees beginning 1006' from DER, 189' left of centerline, up to 892' MSL. Trees beginning 1141' from DER, 36' right of centerline, up to 866' MSL. Tree 2112' from DER, 510' right of centerline, 872' MSL. **Rwy 27**, tree 113' from DER, 498' left of centerline, 855' MSL. Trees, bushes, vehicles on road, and poles beginning 159' from DER, 21' left of centerline, up to 875' MSL. Pole 267' from DER, 82' right of centerline, 8' AGL/814' MSL. Building 269' from DER, 519' right of centerline, 20' AGL/826' MSL. Pole, and trees beginning 457' from DER, 26' right of centerline, up to 41' AGL/846' MSL. Trees, and pole beginning 833' from DER, 1' right of centerline, up to 851' MSL. Tree 2727' from DER, 815' right of centerline, 900' MSL.

## INDIANAPOLIS, IN

### EAGLE CREEK AIRPARK (EYE)

#### TAKEOFF MINIMUMS AND (OBSTACLE) DEPARTURE PROCEDURES

AMDT 3 16091 (FAA)

DEPARTURE PROCEDURE: **Rwy 3**, climb heading 031° to 2100 before turning on course.

TAKEOFF OBSTACLE NOTES: **Rwy 3**, pole 507' from DER, 631' left of centerline, 38' AGL/860' MSL. Building 859' from DER, 524' right of centerline, 35' AGL/851' MSL. Trees beginning 2015' from DER, 583' left of centerline, up to 87' AGL/904' MSL. **Rwy 21**, airport beacon 10' from DER, 464' left of centerline, 54' AGL/867' MSL. Pole 167' from DER, 385' left of centerline, 33' AGL/848' MSL. Vehicles on road 310' from DER, right and left of centerline, up to 15' AGL/833' MSL. Building 363' from DER, 258' left of centerline, 14' AGL/828' MSL. Trees beginning 677' from DER, 267' right of centerline, up to 89' AGL/901' MSL. Poles and power lines beginning 699' from DER, 451' left of centerline, up to 38' AGL/849' MSL. Trees beginning 1623' from DER, 57' left of centerline, up to 90' AGL/890' MSL.

## GREENWOOD MUNI (HFY)

#### TAKEOFF MINIMUMS AND (OBSTACLE) DEPARTURE PROCEDURES

AMDT 4A 16091 (FAA)

TAKEOFF MINIMUMS: **Rwy 19**, 300-1 or std. w/min. climb of 484' per NM to 1200.

DEPARTURE PROCEDURE: **Rwy 1**, climb heading 010° to 1500 before turning right.

TAKEOFF OBSTACLE NOTES: **Rwy 1**, poles beginning 425' from DER, 224' left of centerline, up to 46' AGL/864' MSL. Building 458' from DER, 409' right of centerline, 40' AGL/858' MSL. Vehicles on road 725' from DER, right and left of centerline, up to 15' AGL/840' MSL. Poles and power lines beginning 1162' from DER, 483' right of centerline, up to 70' AGL/893' MSL. Tree 1174' from DER, 512' left of centerline, 46' AGL/864' MSL. Trees beginning 1930' from DER, 393' left of centerline, up to 89' AGL/899' MSL. Trees beginning 2463' from DER, 376' right of centerline, up to 77' AGL/898' MSL. Tree 2965' from DER, 328' left of centerline, 89' AGL/896' MSL. **Rwy 19**, trees beginning 1068' from DER, 288' left of centerline, up to 58' AGL/914' MSL. Trees beginning 1477' from DER, 379' right of centerline, up to 98' AGL/923' MSL. Tank 4034' from DER, 71' right of centerline, 120' AGL/985' MSL.

## HENRICKS COUNTY-GORDON GRAHAM FLD (2R2)

#### TAKEOFF MINIMUMS AND (OBSTACLE) DEPARTURE PROCEDURES

ORIG 08157 (FAA)

TAKEOFF OBSTACLE NOTES: **Rwy 18**, Pole 746' from DER, on centerline, 60' AGL/919' MSL, trees 2091' from DER, 625' left of centerline, 100' AGL/949' MSL. **Rwy 36**, Trees 1302' from DER, 648' right of centerline, 100' AGL/1009' MSL. Tree 3529' from DER, 788' right of centerline, 100' AGL/1009' MSL. Tree 5244' from DER, 1005' left of centerline, 100' AGL/1029' MSL.

# TAKEOFF MINIMUMS, (OBSTACLE) DEPARTURE PROCEDURES, AND DIVERSE VECTOR AREA (RADAR VECTORS)

17285

EC-2



# TAKEOFF MINIMUMS, (OBSTACLE) DEPARTURE PROCEDURES, AND DIVERSE VECTOR AREA (RADAR VECTORS)

17285

## INDIANAPOLIS, IN (CON'T)

INDIANAPOLIS EXECUTIVE (TYQ)  
TAKEOFF MINIMUMS AND (OBSTACLE)  
DEPARTURE PROCEDURES  
AMDT 1 11293 (FAA)

TAKEOFF OBSTACLE NOTES: **Rwy 18**, tree 1870' from DER, 524' left of centerline, 52' AGL/971' MSL. **Rwy 36**, poles 1115' from DER, 321' left of centerline, 33' AGL/958' MSL. Multiple trees beginning 1257' from DER, 320' right of centerline, up to 80' AGL/999' MSL. Multiple trees beginning 2266' from DER, left and right of centerline, up to 126' AGL/1035' MSL.

## INDIANAPOLIS INTL (IND)

TAKEOFF MINIMUMS AND (OBSTACLE)  
DEPARTURE PROCEDURES  
ORIG 07018 (FAA)

TAKEOFF OBSTACLE NOTES: **Rwy 5R**, tower 3756' from DER, 1048' left of centerline, 111' AGL/901' MSL. Rod on obstruction light dome 3765' from DER, 1076' left of centerline, 107' AGL/901' MSL. **Rwy 5L**, rod on obstruction light MCWV tower 5052' from DER, 140' right of centerline, 129' AGL/923' MSL. Tower 5073' from DER, 93' right of centerline, 128' AGL/923' MSL. **Rwy 23R**, tree 5159' from DER, 1144' right of centerline, 101' AGL/870' MSL. Tree 3295' from DER, 948' right of centerline, 78' AGL/822' MSL. **Rwy 32**, antenna 2370' from DER, 755' right of centerline, 70' AGL/849' MSL. Tree 2244' from DER, 707' right of centerline, 66' AGL/845' MSL.

## INDIANAPOLIS METROPOLITAN (UMP)

TAKEOFF MINIMUMS AND (OBSTACLE)  
DEPARTURE PROCEDURES  
AMDT 3 11125 (FAA)

TAKEOFF MINIMUMS: **Rwy 15**, NA-Obstacles.  
DEPARTURE PROCEDURE: **Rwy 33**, climb heading 329° to 1400 before turning left.  
TAKEOFF OBSTACLE NOTES: **Rwy 33**, vehicles on road 367' from DER, crossing left and right of centerline, up to 15' AGL/799' MSL. Trees beginning 682' from DER, 69' right of centerline, up to 100' AGL/879' MSL. Trees beginning 1805 from DER, 648' left of centerline, up to 100' AGL/874' MSL.

## INDIANAPOLIS RGNL (MQJ)

TAKEOFF MINIMUMS AND (OBSTACLE)  
DEPARTURE PROCEDURES  
AMDT 3 12264 (FAA)

TAKEOFF MINIMUMS: **Rwy 34**, 300-1 or std. w/min. climb of 347' per NM to 1100.  
DEPARTURE PROCEDURE: **Rwy 25**, climb heading 270° to 2000 before turning left.  
TAKEOFF OBSTACLE NOTES: **Rwy 7**, airplane on taxiway, 177' from DER, 518' left of centerline, up to 17' AGL/871' MSL. Trees beginning 4074' from DER, 434' left of centerline, up to 100' AGL/969' MSL. Trees beginning 4626' from DER, 837' right of centerline, up to 100' AGL/979' MSL. **Rwy 16**, airplane on taxiway, 183' from DER, 479' right of centerline, up to 17' AGL/871' MSL. Pole 234' from DER, 550' right of centerline, 6' AGL/864' MSL. Trees beginning 1634' from DER, 666' left of centerline, up to 78' AGL/929' MSL. **Rwy 25**, trees beginning 2347' from DER, 927' left of centerline, up to 100' AGL/969' MSL. **Rwy 34**, trees beginning 1309' from DER, 7' left of centerline, up to 98' AGL/954' MSL. Pole 1587' from DER, 295' left of centerline, 41' AGL/900' MSL. Trees beginning 3099' from DER, 1043' right of centerline, up to 86' AGL/960' MSL. Antennas and towers beginning 3682' from DER, 1364' right of centerline, up to 167' AGL/1022' MSL.

## JACKSON, OH

JAMES A. RHODES (I43)  
TAKEOFF MINIMUMS AND (OBSTACLE)  
DEPARTURE PROCEDURES  
AMDT 4 07354 (FAA)

TAKEOFF MINIMUMS: **Rwy 1**, 300-2. **Rwy 19**, 300-1½.  
DEPARTURE PROCEDURE: **Rwy 1**, climb heading 010° to 1500 before turning left.  
TAKEOFF OBSTACLE NOTES: **Rwy 1**, car on road 475' from DER, on centerline, 15' AGL/754' MSL. Trees 2570' from DER, 613' left of centerline, 100' AGL/936' MSL. Trees 2810' from DER, 1243' left of centerline, 100' AGL/989' MSL. Trees 1.1 NM from DER, 1355' right of centerline, 100' AGL/949' MSL. Tank 1.4 NM from DER, 1870' left of centerline, 112' AGL/1008' MSL. Rising terrain beginning 1320' from DER, 316' left of centerline, up to 889' MSL. **Rwy 19**, pole 1137' from DER, 114' left of centerline, 39' AGL/779' MSL. Trees 1869' from DER, 138' right of centerline, 100' AGL/840' MSL. Trees 2349' from DER, 103' right of centerline, 100' AGL/899' MSL. Rising terrain beginning 386' from DER, 587' right of centerline, up to 989' MSL.

## JEFFERSONVILLE, IN

CLARK RGNL (JVY)  
TAKEOFF MINIMUMS AND (OBSTACLE)  
DEPARTURE PROCEDURES  
AMDT 2 10266 (FAA)

DEPARTURE PROCEDURE: **Rwy 14**, climb heading 140° to 1300 before turning west. **Rwy 18**, climb heading 182° to 1500 before turning west. **Rwy 32**, climb heading 335° to 1900 before turning west. **Rwy 36**, climb heading 002° to 1600 before turning west.  
TAKEOFF OBSTACLE NOTES: **Rwy 14**, sign 22' from DER, 88' right of centerline, 22' AGL/465' MSL. Tree 262' from DER, 361' left of centerline, 77' AGL/527' MSL. Trees beginning 499' from DER, 175' left of centerline, up to 93' AGL/543' MSL. Trees beginning 596' from DER, 175' right of centerline, up to 96' AGL/536' MSL. Transmission tower and tree beginning 1668' from DER, 306' left of centerline, up to 89' AGL/569' MSL. Tree and transmission towers 1942' from DER, 98' right of centerline, 145' AGL/603' MSL. **Rwy 18**, tree 262' from DER, 524' left of centerline, 60' AGL/490' MSL. Trees beginning 301' from DER, 474' right of centerline, up to 65' AGL/495' MSL. Trees and transmission towers beginning 626' from DER, 105' left of centerline, up to 146' AGL/605' MSL. Trees and light pole beginning 764' from DER, 154' right of centerline, up to 150' AGL/603' MSL. Trees beginning 1375' from DER, 35' left of centerline, up to 121' AGL/551' MSL. Trees beginning 1720' from DER, 28' right of centerline, up to 99' AGL/559' MSL. Transmission towers and catenary beginning 4640' from DER, up to 120' AGL/600' MSL. **Rwy 32**, sign 19' from DER, 87' left of centerline, 14' AGL/474' MSL. Trees beginning 192' from DER, 324' right of centerline, up to 76' AGL/546' MSL. Tree 385' from DER, 269' left of centerline, 61' AGL/531' MSL. Building 559' from DER, 165' right of centerline, 25' AGL/485' MSL. Pole and tree 1026' from DER, 25' left of centerline, up to 47' AGL/507' MSL. Tree 1053' from DER, 510' left of centerline, 90' AGL/560' MSL. Tree 2052' from DER, 12' left of centerline, 99' AGL/569' MSL. **Rwy 36**, tree 1736' from DER, 909' right of centerline, 73' AGL/533' MSL.

04 JAN 2018 to 01 FEB 2018

04 JAN 2018 to 01 FEB 2018

# TAKEOFF MINIMUMS, (OBSTACLE) DEPARTURE PROCEDURES, AND DIVERSE VECTOR AREA (RADAR VECTORS)

17285

EC-2

# TAKEOFF MINIMUMS, (OBSTACLE) DEPARTURE PROCEDURES, AND DIVERSE VECTOR AREA (RADAR VECTORS)

17285

## KENDALLVILLE, IN

KENDALLVILLE MUNI (C62)  
TAKEOFF MINIMUMS AND (OBSTACLE)  
DEPARTURE PROCEDURES  
AMDT 2 86016 (FAA)  
DEPARTURE PROCEDURE: **Rwys 10, 28**, climb  
runway heading to 1500 before turning south.

## KENT, OH

KENT STATE UNIV (1G3)  
TAKEOFF MINIMUMS AND (OBSTACLE)  
DEPARTURE PROCEDURES  
ORIG 12152 (FAA)  
TAKEOFF OBSTACLE NOTES: **Rwy 1**, trees,  
transmission poles, and a chimney beginning 72' from  
DER, 369' right of centerline, up to 69' AGL/1179'  
MSL. Trees and a transmission pole beginning 394'  
from DER, 249' left of centerline, up to 97' AGL/1203'  
MSL. **Rwy 19**, vehicles on road, poles, and a tree  
beginning 331' from DER, 325' left of centerline, up to  
42' AGL/1144' MSL. Trees and a building beginning  
61' from DER, 412' from centerline, up to 81'  
AGL/1185' MSL. Trees beginning 1240' from DER, left  
and right of centerline, up to 109' AGL/1218' MSL.

## KENTLAND, IN

KENTLAND MUNI (501)  
TAKEOFF MINIMUMS AND (OBSTACLE)  
DEPARTURE PROCEDURES  
AMDT 1 17257  
DEPARTURE PROCEDURE: **Rwy 27**, climb heading  
260° to 1100' before proceeding on course.  
TAKEOFF OBSTACLE NOTES: **Rwy 9**, vehicle on road  
486' from DER, crossing centerline, 715' MSL/15'  
AGL. Trees beginning 571' from DER, 116' right of  
centerline, up to 770' MSL/70' AGL. **Rwy 27**, trees,  
building, pole beginning 533' from DER, 146' right of  
centerline, up to 765' MSL. Pole beginning 746' from  
DER, 25' left of centerline, up to 23' AGL/723' MSL.  
Pole beginning 925' from DER, 130' left of centerline,  
up to 27' AGL/724' MSL. Tree 1215' from DER, 450'  
left of centerline, 733' MSL.

## KENTON, OH

HARDIN COUNTY (195)  
TAKEOFF MINIMUMS AND (OBSTACLE)  
DEPARTURE PROCEDURES  
AMDT 3 11013 (FAA)  
TAKEOFF OBSTACLE NOTES: **Rwy 4**, trees, buildings,  
antenna on building, light poles, and flag poles  
beginning 31' from DER, 240' left of centerline, up to  
29' AGL/1027' MSL. Sign 103' from DER, 204' right of  
centerline, 8' AGL/1012' MSL. Trees beginning 877'  
from DER, left and right of centerline, up to 103'  
AGL/1093' MSL. **Rwy 22**, trees and buildings  
beginning 7' from DER, 484' left of centerline, up to 77'  
AGL/1103' MSL. Trees beginning 179' from DER, 51'  
right of centerline, up to 108' AGL/1122' MSL. Trees  
beginning 1345' from DER, left and right of centerline,  
up to 115' AGL/1158' MSL.

## KNOX, IN

STARKE COUNTY (OXI)  
TAKEOFF MINIMUMS AND (OBSTACLE)  
DEPARTURE PROCEDURES  
ORIG 08269 (FAA)  
TAKEOFF MINIMUMS: **Rwys 9, 27**, NA-Environmental.  
TAKEOFF OBSTACLE NOTES: **Rwy 36**, tree 1234' from  
DER, 477' left of centerline, 35' AGL/715' MSL. **Rwy 18**,  
trees beginning 2442' from DER, 135' right of centerline,  
up to 86' AGL/769' MSL. Tree 21' from DER, 449' left of  
centerline, 5' AGL/668' MSL.

## KOKOMO, IN

KOKOMO MUNI (OKK)  
TAKEOFF MINIMUMS AND (OBSTACLE)  
DEPARTURE PROCEDURES  
AMDT 1 16175 (FAA)  
TAKEOFF OBSTACLE NOTES: **Rwy 5**, sign 20' from DER,  
210' left of centerline, 3' AGL/821' MSL. Trees beginning  
501' from DER, 361' right of centerline, up to 57' AGL/870'  
MSL. Tree 640' from DER, 466' left of centerline, 20'  
AGL/835' MSL. Pole 642' from DER, 653' left of  
centerline, 843' MSL. Buildings beginning 908' from DER,  
706' left of centerline, up to 37' AGL/856' MSL. Pole 971'  
from DER, 610' left of centerline, up to 39' AGL/858' MSL.  
Trees, poles beginning 1042' from DER, 609' left of  
centerline, up to 48' AGL/870' MSL. Elevator 1835' from  
DER, 361' right of centerline, 41' AGL/867' MSL. Trees  
beginning 3730' from DER, 1373' left of centerline, up to  
928' MSL. Trees beginning 3747' from DER, 1245' left of  
centerline, up to 936' MSL. **Rwy 14**, tree, bush beginning  
6' from DER, 196' left of centerline, up to 31' AGL/849'  
MSL. Tree, fence, vertical structure beginning 53' from  
DER, 153' right of centerline, up to 9' AGL/831' MSL.  
Bush, fence beginning 116' from DER, 297' right of  
centerline, up to 842' MSL. Building 2117' from DER, 488'  
left of centerline, 58' AGL/880' MSL. Building, elevator  
beginning 2120' from DER, 485' left of centerline, up to  
885' MSL. Tree 2181' from DER, 215' left of centerline, 64'  
AGL/890' MSL. Trees beginning 2186' from DER, 213' left  
of centerline, up to 77' AGL/904' MSL. Tree 2945' from  
DER, 1073' right of centerline, 899' MSL. **Rwy 32**, post 0'  
from DER, 149' right of centerline, 4' AGL/828' MSL.  
Buildings beginning 133' from DER, 493' right of  
centerline, up to 15' AGL/837' MSL. Buildings beginning  
155' from DER, 490' right of centerline, up to 20' AGL/843'  
MSL. Poles beginning 706' from DER, 520' right of  
centerline, up to 49' AGL/873' MSL. Buildings, elevator,  
trees beginning 1592' from DER, 414' left of centerline, up  
to 68' AGL/889' MSL. Tree 4804' from DER, 500' left of  
centerline, 121' AGL/949' MSL.

04 JAN 2018 to 01 FEB 2018

04 JAN 2018 to 01 FEB 2018

# TAKEOFF MINIMUMS, (OBSTACLE) DEPARTURE PROCEDURES, AND DIVERSE VECTOR AREA (RADAR VECTORS)

17285

EC-2

# TAKEOFF MINIMUMS, (OBSTACLE) DEPARTURE PROCEDURES, AND DIVERSE VECTOR AREA (RADAR VECTORS)

17285

## LA PORTE, IN

### LA PORTE MUNI (PPO)

TAKEOFF MINIMUMS AND (OBSTACLE)  
DEPARTURE PROCEDURES  
AMDT 2 07186 (FAA)

TAKEOFF OBSTACLE NOTES: **Rwy 14**, power line beginning 4937' from DER, 670' right of centerline, 150' AGL/934' MSL. **Rwy 20**, power line beginning 3978' from DER, 1566' left of centerline, 150' AGL/959' MSL.

## LAFAYETTE, IN

### PURDUE UNIVERSITY (LAF)

TAKEOFF MINIMUMS AND (OBSTACLE)  
DEPARTURE PROCEDURES  
AMDT 1 07130 (FAA)

TAKEOFF MINIMUMS: **Rwy 5**, 300-1¼ or std. w/ min. climb of 342' per NM to 1000. **Rwy 23**, 400-2¼ or std. w/ min. climb of 220' per NM to 1100.

TAKEOFF OBSTACLE NOTES: **Rwy 5**, multiple trees and buildings beginning 290' from DER, 33' right of centerline, up to 167' AGL/782' MSL. Multiple trees, buildings, and antennas beginning 45' from DER, 25' left of centerline, up to 227' AGL/850' MSL. **Rwy 10**, multiple trees beginning 1230' from DER, 394' right of centerline, up to 80' AGL/639' MSL. Antenna 258' from DER, 323' left of centerline, 14' AGL/613' MSL. **Rwy 23**, rod on obstruction light tower 1.9 NM from DER, 272' left of centerline, 314' AGL/915' MSL. Tree 90' from DER, 235' left of centerline, 34' AGL/613' MSL. **Rwy 28**, multiple trees beginning 397' from DER, 461' left of centerline, up to 57' AGL/656' MSL. Tree 3382' from DER, 973' right of centerline, 68' AGL/697' MSL.

## LANCASTER, OH

### FAIRFIELD COUNTY (LHQ)

TAKEOFF MINIMUMS AND (OBSTACLE)  
DEPARTURE PROCEDURES  
AMDT 2 13346 (FAA)

TAKEOFF MINIMUMS: **Rwy 10**, 400-2 or std. w/min. climb of 310' per NM to 1400.

DEPARTURE PROCEDURE: **Rwy 10**, climb heading 100° to 1600 before proceeding on course.

TAKEOFF OBSTACLE NOTES: **Rwy 10**, trees beginning 1571' from DER, 647' right of centerline, up to 56' AGL/927' MSL. Trees beginning 1617' from DER, 509' left of centerline, up to 89' AGL/974' MSL. Trees beginning 2131' from DER, 460' right of centerline, up to 74' AGL/945' MSL. Trees beginning 5480' from DER, 173' right of centerline, up to 76' AGL/1037' MSL. Trees beginning 1.1 NM from DER, 724' left of centerline, up to 84' AGL/1061' MSL. Tree 1.9 NM from DER, 1990' right of centerline, 100' AGL/1259' MSL. **Rwy 28**, trees beginning 738' from DER, 315' left of centerline, up to 77' AGL/912' MSL. Trees 1509' from DER, 97' right of centerline, up to 76' AGL/897' MSL. Trees beginning 1906' from DER, 358' right of centerline, up to 107' AGL/942' MSL. Silo 2230' from DER, 267' left of centerline, 60' AGL/915' MSL.

## LEBANON, OH

### LEBANON-WARREN COUNTY (I68)

TAKEOFF MINIMUMS AND (OBSTACLE)  
DEPARTURE PROCEDURES  
AMDT 1 12264 (FAA)

TAKEOFF OBSTACLE NOTES: **Rwy 1**, terrain and tree beginning 36' from DER, 320' left of centerline, up to 50' AGL/958' MSL. Trees beginning 1084' from DER, left and right of centerline, up to 65' AGL/955' MSL. Trees beginning 1510' from DER, left and right of centerline, up to 80' AGL/986' MSL. Trees beginning 2001' from DER, 83' left of centerline, up to 100' AGL/1015' MSL. **Rwy 19**, vehicles on roadway beginning abeam the DER, left and right of centerline, up to 15' AGL/901' MSL. Terrain beginning 32' from DER, left and right of centerline, up to 886' MSL. Buildings 74' from DER, 425' right of centerline, up to 15' AGL/892' MSL. Trees 252' from DER, 359' right of centerline, up to 60' AGL/948' MSL. Trees beginning 1089' from DER, 179' left of centerline, up to 55' AGL/952' MSL. Trees beginning 1804' from DER, left and right of centerline, up to 85' AGL/960' MSL.

## LIMA, OH

### LIMA ALLEN COUNTY (AOH)

TAKEOFF MINIMUMS AND (OBSTACLE)  
DEPARTURE PROCEDURES  
AMDT 1 10042 (FAA)

TAKEOFF MINIMUMS: **Rwys 14, 32**, NA-Environmental. TAKEOFF OBSTACLE NOTES: **Rwy 10**, bush beginning 162' from DER, 310' right of centerline, up to 4' AGL/983' MSL. **Rwy 28**, multiple trees beginning 1343' from DER, 160' right of centerline, up to 71' AGL/1015' MSL.

## LOGANSPORT, IN

### LOGANSPORT/CASS COUNTY (GGP)

TAKEOFF MINIMUMS AND (OBSTACLE)  
DEPARTURE PROCEDURES  
AMDT 1 11125 (FAA)

TAKEOFF OBSTACLE NOTES: **Rwy 9**, tree 2218' from DER, 489' right of centerline, 65' AGL/794' MSL. **Rwy 27**, power poles beginning 925' from DER, 334' left of centerline, 40' AGL/773' MSL. Tree 2042' from DER, 143' left of centerline, 72' AGL/801' MSL. Power poles beginning 639' from DER, 332' right of centerline, 40' AGL/767' MSL.

## LONDON, OH

### MADISON COUNTY (UYF)

TAKEOFF MINIMUMS AND (OBSTACLE)  
DEPARTURE PROCEDURES  
ORIG 90347 (FAA)

TAKEOFF MINIMUMS: **Rwy 27**, 300-1.

# TAKEOFF MINIMUMS, (OBSTACLE) DEPARTURE PROCEDURES, AND DIVERSE VECTOR AREA (RADAR VECTORS)

17285

EC-2

# TAKEOFF MINIMUMS, (OBSTACLE) DEPARTURE PROCEDURES, AND DIVERSE VECTOR AREA (RADAR VECTORS)

17285

## LORAIN/ELYRIA, OH

LORAIN COUNTY RGNL (LPR)  
TAKEOFF MINIMUMS AND (OBSTACLE)  
DEPARTURE PROCEDURES  
ORIG 06159 (FAA)

TAKEOFF OBSTACLE NOTES: **Rwy 7**, multiple trees beginning 973' from DER, 293' right of centerline, up to 75' AGL/865' MSL. Multiple trees beginning 839' from DER, 636' left of centerline, up to 47' AGL/836' MSL. **Rwy 25**, bush 583' from DER, 468' right of centerline, 10' AGL/809' MSL. Tree 1587' from DER, 698' left of centerline, 44' AGL/838' MSL. Tree 2277' from DER, 435' right of centerline, 58' AGL/854' MSL.

## MADISON, IN

MADISON MUNI (IMS)  
TAKEOFF MINIMUMS AND (OBSTACLE)  
DEPARTURE PROCEDURES  
AMDT 2 08213(FAA)

TAKEOFF OBSTACLE NOTES: **Rwy 3**, Vehicle on road 625' from DER, on centerline, 15' AGL/844' MSL. Antenna on building and trees beginning 170' from DER, 432' left of centerline, up to 85' AGL/904' MSL. Poles and trees beginning 526' from DER, 64' right of centerline, up to 130' AGL/959' MSL. **Rwy 21**, Vehicle on road 575' from DER, on centerline, 15' AGL/824' MSL. Trees and poles beginning 285' from DER, 16' left of centerline, up to 157' AGL/947' MSL. Trees and pole beginning 116' from DER, 1' right of centerline, up to 123' AGL/912' MSL.

## MANSFIELD, OH

MANSFIELD LAHM RGNL (MFD)  
TAKEOFF MINIMUMS AND (OBSTACLE)  
DEPARTURE PROCEDURES  
ORIG 09071 (FAA)

TAKEOFF OBSTACLE NOTES: **Rwy 5**, trees 1337' from DER, 209' right of centerline, 78' AGL/1318' MSL. Trees 1494' from DER, 410' left of centerline, 80' AGL/1330' MSL. **Rwy 32**, trees 2399' from DER, 868' right of centerline, 90' AGL/1310' MSL.

## MARION, IN

MARION MUNI (MZZ)  
TAKEOFF MINIMUMS AND (OBSTACLE)  
DEPARTURE PROCEDURES  
ORIG 02164 (FAA)

TAKEOFF OBSTACLE NOTES: **Rwy 4**, trees 938' from DER, 696' right of centerline, 67' AGL/914' MSL. **Rwy 15**, trees 627' from DER, 263' right of centerline, 82' AGL/929' MSL. **Rwy 22**, trees 1144' from DER, 783' left of centerline, 89' AGL/936' MSL. **Rwy 33**, trees 1005' from DER, 728' left of centerline, 99' AGL/946' MSL.

## MARION, OH

MARION MUNI (MNN)  
TAKEOFF MINIMUMS AND (OBSTACLE)  
DEPARTURE PROCEDURES  
ORIG 07242 (FAA)

DEPARTURE PROCEDURE: **Rwy 25**, climb heading 245° to 1600 before turning right.  
TAKEOFF OBSTACLE NOTES: **Rwy 7**, trees 3283' from DER, 273' left of centerline, up to 89' AGL/1088' MSL. Multiple trees beginning 36' from DER, 280' right of centerline, up to 43' AGL/1033' MSL. **Rwy 13**, trees 512' from DER, 277' left of centerline, up to 100' AGL/1089' MSL. Road 491' from DER, 15' AGL/1004' MSL. **Rwy 25**, obstruction light on antenna 419' from DER, 407' left of centerline, up to 13' AGL/1008' MSL. Road 434' from DER, 15' AGL/1004' MSL. **Rwy 31**, trees 2186' from DER, up to 100' AGL/1089' MSL. Road 355' from DER, 485' left of centerline, 15' AGL/1004' MSL.

## MARYSVILLE, OH

UNION COUNTY (MRT)  
TAKEOFF MINIMUMS AND (OBSTACLE)  
DEPARTURE PROCEDURES  
AMDT 2 89320 (FAA)  
TAKEOFF MINIMUMS: **Rwy 9**, 300-1.

## MEDINA, OH

MEDINA MUNI (1G5)  
TAKEOFF MINIMUMS AND (OBSTACLE)  
DEPARTURE PROCEDURES  
AMDT 4 10322 (FAA)

TAKEOFF OBSTACLE NOTES: **Rwy 1**, vehicle on road 534' from DER, on centerline 15' AGL/1214' MSL. Trees beginning 562' from DER, 588' left of centerline, up to 100' AGL/1279' MSL. Trees beginning 1925' from DER on centerline, up to 100' AGL/1319' MSL. **Rwy 9**, trees beginning 305' from DER, 396' right of centerline, up to 100' AGL/1249' MSL. Tower 3626' from DER, 533' left of centerline, 189' AGL/1321' MSL. **Rwy 19**, trees beginning at DER, 112' left of centerline, up to 100' AGL/1289' MSL. Trees beginning 1490' from DER, 150' right of centerline, up to 100' AGL/1289' MSL. **Rwy 27**, trees beginning at DER, 345' left of centerline, up to 100' AGL/1319' MSL. Trees beginning at DER, 366' right of centerline, up to 100' AGL/1279' MSL. Vehicle on road 501' from DER, on centerline, 15' AGL/1184' MSL.

## MICHIGAN CITY, IN

MICHIGAN CITY MUNI-PHILLIPS FIELD (MGC)  
TAKEOFF MINIMUMS AND (OBSTACLE)  
DEPARTURE PROCEDURES  
AMDT 2 10266 (FAA)  
DEPARTURE PROCEDURE: **Rwy 20**, climb heading 203° to 1200 before turning left.  
TAKEOFF OBSTACLE NOTES: **Rwy 2**, vehicle on road beginning 97' from DER, 191' left of centerline, up to 15' AGL/654' MSL. Vehicle on road 374' from DER, 555' right of centerline, 15' AGL/674' MSL. Trees beginning 169' from DER, left and right of centerline, up to 50' AGL/709' MSL. **Rwy 20**, trees beginning at DER, 181' right of centerline, up to 50' AGL/709' MSL. Vehicles on road 208' from DER, left and right of centerline, 17' AGL/676' MSL. Trees beginning 1418' from DER, left and right of centerline, up to 50' AGL/719' MSL.

04 JAN 2018 to 01 FEB 2018

04 JAN 2018 to 01 FEB 2018

# TAKEOFF MINIMUMS, (OBSTACLE) DEPARTURE PROCEDURES, AND DIVERSE VECTOR AREA (RADAR VECTORS)

17285

EC-2

# TAKEOFF MINIMUMS, (OBSTACLE) DEPARTURE PROCEDURES, AND DIVERSE VECTOR AREA (RADAR VECTORS)

17285

## MIDDLEFIELD, OH

GEAUGA COUNTY (7G8)

TAKEOFF MINIMUMS AND (OBSTACLE)  
DEPARTURE PROCEDURES  
AMDT 3 06159 (FAA)

TAKEOFF OBSTACLE NOTES: **Rwy 11**, railroad 331' from DER, 315' left of centerline, 23' AGL/1182' MSL. Trees 3144' from DER, 671' left of centerline, 100' AGL/1249' MSL. **Rwy 29**, railroad 349' from DER, 521' left of centerline, 23' AGL/1212' MSL. Multiple buildings 993' from DER, 294' right of centerline, 40' AGL/1239' MSL. Trees 1875' from DER, 791' right of centerline, 100' AGL/1319' MSL. Tank 2251' from DER, 578' right of centerline, 125' AGL/1315' MSL.

## MIDDLETOWN, OH

MIDDLETOWN RGNL/HOOK FIELD

(MWO)

TAKEOFF MINIMUMS AND (OBSTACLE)  
DEPARTURE PROCEDURES  
AMDT 2 12264 (FAA)

TAKEOFF MINIMUMS: **Rwys 8, 26**, NA -environmental. **Rwy 23**, 300-1¼ or std. w/min. climb of 880' per NM to 1000.

DEPARTURE PROCEDURE: **Rwy 5**, climb heading 053° to 1500' before proceeding on course. **Rwy 23**, climb heading 233° to 1300' before proceeding on course.

TAKEOFF OBSTACLE NOTES: **Rwy 5**, vehicles on roadway 17' from DER, left and right of centerline, up to 15' AGL/669' MSL. Terrain 106' from DER, 447' left of centerline, 661' MSL. Terrain 335' from DER, 395' left of centerline, 659' MSL. Trees beginning 676' from DER, left and right of centerline, up to 126' AGL/766' MSL. Poles beginning 1003' from DER, 259' right of centerline, up to 55' AGL/695' MSL. **Rwy 23**, trees 1119' from DER, 76' right of centerline, 109' AGL/739' MSL. Tower 1794' from DER, 603' left of centerline, 63' AGL/703' MSL. Stack 1997' from DER, 961' left of centerline, 205' AGL/855' MSL. Tree 1930' from DER, 903' left of centerline, 109' AGL/749' MSL.

## MILLERSBURG, OH

HOLMES COUNTY (10G)

TAKEOFF MINIMUMS AND (OBSTACLE)  
DEPARTURE PROCEDURES  
AMDT 2 15232 (FAA)

TAKEOFF MINIMUMS: **Rwy 9, 27**, 300-1.  
TAKEOFF OBSTACLE NOTES: **Rwy 9**, bushes 136' from DER, 235 left of centerline, up to 25' AGL/1200' MSL. **Rwy 27**, trees beginning 212' from DER, 443' right of center line, up to 100' AGL/1287' MSL. Trees and poles beginning 1220' from DER, 158' right of centerline, up to 100' AGL/1315' MSL. Trees and buildings beginning 1116' from DER, 272' left of centerline, up to 100' AGL/1337' MSL.

## MONTICELLO, IN

WHITE COUNTY (MCX)

TAKEOFF MINIMUMS AND (OBSTACLE)  
DEPARTURE PROCEDURES  
AMDT 3 16315 (FAA)

TAKEOFF MINIMUMS: **Rwy 36**, 600-3 or std. w/min. climb of 265' per NM to 1400.

TAKEOFF OBSTACLE NOTES: **Rwy 18**, trees beginning 23' from DER, 309' left of centerline, up to 739' MSL. Trees beginning 35' from DER, 296' right of centerline, 731' MSL. Trees and pole beginning 51' from DER, 16' right of centerline, up to 744' MSL. Trees and building beginning 436' from DER, 3' left of centerline, up to 757' MSL. Trees beginning 1284' from DER, 11' left of centerline, up to 775' MSL. Trees beginning 1961' from DER, 27' right of centerline, up to 753' MSL. **Rwy 36**, tree 983' from DER, 571' right of centerline, 754' MSL. Tower 1.7 NM from DER, 1101' right of centerline, 292' AGL/973' MSL. Tower 2.5 NM from DER, 4185' left of centerline, 420' AGL/1134' MSL.

## MT. GILEAD, OH

MORROW COUNTY (419)

TAKEOFF MINIMUMS AND (OBSTACLE)  
DEPARTURE PROCEDURES  
AMDT 2 10322

TAKEOFF OBSTACLE NOTES: **Rwy 10**, trees 858' from DER, 331' right of centerline, 100' AGL/1189' MSL. Trees 963' from DER, 380' left of centerline, 100' AGL/1189' MSL. **Rwy 28**, trees beginning 877' from DER, 302' right of centerline, up to 100' AGL/1159' MSL. Trees 324' from DER, 494' right of centerline, 100' AGL/1169' MSL. Vehicles on road beginning 228' from DER, extending from 542' right to 674' left of centerline up to 15' AGL/1084' MSL.

## MT. VERNON, OH

KNOX COUNTY (413)

TAKEOFF MINIMUMS AND (OBSTACLE)  
DEPARTURE PROCEDURES  
ORIG 09015 (FAA)

TAKEOFF OBSTACLE NOTES: **Rwy 28**, trees 2121' from DER, 361' right of centerline, 47' AGL/1246' MSL.

## MUNCIE, IN

DELAWARE COUNTY RGNL (MIE)

TAKEOFF MINIMUMS AND (OBSTACLE)  
DEPARTURE PROCEDURES  
AMDT 4A 13346 (FAA)

TAKEOFF OBSTACLE NOTES: **Rwy 3**, pole 717' from DER, 596' right of centerline, 19' AGL/954' MSL. Trees beginning 771' from DER, 413' right of centerline, up to 56' AGL/991' MSL. Trees beginning 2463' from DER, 44' left of centerline, up to 76' AGL/1007' MSL. Towers and pole 3802' from DER, 702' left of centerline, up to 121' AGL/1049' MSL. **Rwy 14**, trees beginning 2062' from DER, 1005' right of centerline, up to 68' AGL/1013' MSL. **Rwy 21**, rising terrain beginning 6' from DER, 304' right of centerline, up to 943' MSL. Flag pole 851' from DER, 627' left of centerline, 25' AGL/962' MSL. Building 941' from DER, 670' left of centerline, 32' AGL/969' MSL. Trees beginning 946' from DER, 39' left of centerline, up to 81' AGL/1033' MSL. Trees beginning 1119' from DER, 207' right of centerline, up to 96' AGL/1032' MSL. **Rwy 32**, trees and bushes beginning 86' from DER, 447' left of centerline, up to 17' AGL/940' MSL.

04 JAN 2018 to 01 FEB 2018

04 JAN 2018 to 01 FEB 2018

# TAKEOFF MINIMUMS, (OBSTACLE) DEPARTURE PROCEDURES, AND DIVERSE VECTOR AREA (RADAR VECTORS)

17285

EC-2

**TAKEOFF MINIMUMS, (OBSTACLE) DEPARTURE PROCEDURES, AND  
DIVERSE VECTOR AREA (RADAR VECTORS)**

17285

**NAPOLEON, OH**

HENRY COUNTY (7W5)

TAKEOFF MINIMUMS AND (OBSTACLE)  
DEPARTURE PROCEDURES  
ORIG 10322 (FAA)

TAKEOFF OBSTACLE NOTES: **Rwy 10**, trees 1128' from DER, 774' left of centerline, 100' AGL/784' MSL. Trees 1910' from DER, 419' right of centerline, 100' AGL/784' MSL. **Rwy 28**, vehicle on road 270' from DER, on centerline, 15' AGL/699' MSL. Trees 575' from DER, 427' right of centerline, 100' AGL/784' MSL. Trees 2140' from DER, 389' left of centerline, 100' AGL/789' MSL. Trees 3167' from DER, 390' right of centerline, 100' AGL/784' MSL.

**NAPPANEE, IN**

NAPPANEE MUNI (C03)

TAKEOFF MINIMUMS AND (OBSTACLE)  
DEPARTURE PROCEDURES  
AMDT 1 81036 (FAA)

TAKEOFF MINIMUMS: **Rwy 9**, 300-1.

**NEW CASTLE, IN**

NEW CASTLE-HENRY CO MUNI (UWL)

TAKEOFF MINIMUMS AND (OBSTACLE)  
DEPARTURE PROCEDURES  
ORIG 12068 (FAA)

TAKEOFF OBSTACLE NOTES: **Rwy 9**, vehicle on road 80' from DER, left and right of centerline, 15' AGL/1103' MSL. Trees beginning 2089' from DER, left and right of centerline, up to 97' AGL/1186' MSL. **Rwy 27**, vehicle on road 197' from DER, left and right of centerline, 15' AGL/1088' MSL. Building 751' from DER, 35' left of centerline, 29' AGL/1098' MSL. Trees beginning 371' from DER, 487' left of centerline, up to 57' AGL/1136' MSL.

**NEW LEXINGTON, OH**

PERRY COUNTY (I86)

TAKEOFF MINIMUMS AND (OBSTACLE)  
DEPARTURE PROCEDURES  
ORIG 84243 (FAA)

TAKEOFF MINIMUMS: **Rwys 8, 26**, 300-1.

**NEW PHILADELPHIA, OH**

HARRY CLEVER FIELD (PHD)

TAKEOFF MINIMUMS AND (OBSTACLE)  
DEPARTURE PROCEDURES  
AMDT 3 11293 (FAA)

TAKEOFF MINIMUMS: **Rwys 11, 29**, NA - Environmental. **Rwy 14**, 500-2½ or std. with a min. climb to 420' per NM to 1500. **Rwy 32**, std. w/min. climb of 210' per NM to 1500.

DEPARTURE PROCEDURE: **Rwy14**, climb heading 147° to 1500 before turning. **Rwy 32**, climb heading 327° to 1600 before turning.

TAKEOFF OBSTACLE NOTES: **Rwy 14**, poles beginning 194' from DER, 431' left of centerline, up to 56' AGL/935' MSL. Vehicle on road beginning 240' from DER, 146' left of centerline, up to 15' AGL/902' MSL. Rising terrain and trees beginning 320' from DER, 37' left of centerline, up to 100' AGL/1319' MSL. Siren 383' from DER, 584' left of centerline, 81' AGL/940' MSL. Tower 3659' from DER, 9' left of centerline, 124' AGL/983' MSL. Vehicle on road beginning 78' from DER, 45' right of centerline, up to 15' AGL/904' MSL. Trees beginning 79' from DER, 13' right of centerline, up to 100' AGL/972' MSL. Poles beginning 678' from DER, 3' right of centerline, up to 61' AGL/920' MSL. **Rwy 32**, trees beginning 41' from DER, 64' left of centerline, up to 100' AGL/965' MSL. Vehicle on road beginning 108' from DER, 26' left of centerline, up to 15' AGL/914' MSL. Headstone 142' from DER, 272' left of centerline, 6' AGL/900' MSL. Building 167' from DER, 511' left of centerline, 34' AGL/928' MSL. OL on pole 261' from DER, 213' left of centerline, 37' AGL/931' MSL. Vehicle on road beginning 12' from DER, 28' right of centerline, up to 15' AGL/914' MSL. Rising terrain and trees beginning 36' from DER, 22' right of centerline, up to 100' AGL/984' MSL. Fence 83' from DER, 217' right of centerline, 6' AGL/900' MSL. Poles beginning 502' from DER, 368' right of centerline, up to 28' AGL/924' MSL. Tower 2.6 NM from DER, 2107' right of centerline, 406' AGL/1319' MSL.

**NEWARK, OH**

NEWARK-HEATH (VTA)

TAKEOFF MINIMUMS AND (OBSTACLE)  
DEPARTURE PROCEDURES  
AMDT 2 08213 (FAA)

TAKEOFF MINIMUMS: **Rwy 9**, 600-3 or std. w/ min. climb of 354' per NM to 1800.

DEPARTURE PROCEDURE: **Rwy 9**, climb heading 093° to 1800 before proceeding on course.

TAKEOFF OBSTACLE NOTES: **Rwy 9**, Vehicle road 306' from DER, 164' right of centerline, 15' AGL/894' MSL. Trees beginning 2.2 NM from DER, 1906' right of centerline, 100' AGL/1159' MSL.

04 JAN 2018 to 01 FEB 2018

04 JAN 2018 to 01 FEB 2018

**TAKEOFF MINIMUMS, (OBSTACLE) DEPARTURE PROCEDURES, AND  
DIVERSE VECTOR AREA (RADAR VECTORS)**

17285

EC-2

# TAKEOFF MINIMUMS, (OBSTACLE) DEPARTURE PROCEDURES, AND DIVERSE VECTOR AREA (RADAR VECTORS)

17285

## NORTH VERNON, IN

### NORTH VERNON (OVO)

TAKEOFF MINIMUMS AND (OBSTACLE)  
DEPARTURE PROCEDURES  
ORIG 09239 (FAA)

TAKEOFF OBSTACLE NOTES: **Rwy 5**, tree 1866' from DER, 690' left of centerline, 62' AGL/821' MSL. Tree 428' from DER, 516' right of centerline, 22' AGL/781' MSL. **Rwy 15**, fence beginning 259' from DER, crossing left to right, 11' AGL/765' MSL. Trees beginning 469' from DER, 100' left of centerline, up to 115' AGL/864' MSL. Tree 1509' from DER, 472' right of centerline, 59' AGL/818' MSL. **Rwy 23**, trees beginning 1856' from DER, 94' left of centerline, up to 93' AGL/842' MSL. Tree 3348' from DER 675' right of centerline, 97' AGL/846' MSL. **Rwy 33**, fence beginning 304' from DER, 138' left of centerline, 11' AGL/761' MSL. Tree 2592' from DER, 596' left of centerline, 90' AGL/839' MSL. Power pole 751' from DER, 102' right of centerline, 25' AGL/774' MSL.

## NORWALK, OH

### NORWALK-HURON COUNTY (5A1)

TAKEOFF MINIMUMS AND (OBSTACLE)  
DEPARTURE PROCEDURES  
AMDT 1 83286 (FAA)  
TAKEOFF MINIMUMS: **Rwys 10, 28**, 300-1.

## OTTAWA, OH

### PUTNAM COUNTY (OWX)

TAKEOFF MINIMUMS AND (OBSTACLE)  
DEPARTURE PROCEDURES  
ORIG 09239 (FAA)  
TAKEOFF OBSTACLE NOTES: **Rwy 9**, trees 1342' from DER, 578' right of centerline, 100' AGL/854' MSL. Tree 1978' from DER, 5' left of centerline, 50' AGL/814' MSL. **Rwy 27**, road 1' from DER, 219' right of centerline, 15' AGL/768' MSL. Multiple trees and pole beginning 1606' from DER, 303' left of centerline, up to 100' AGL/854' MSL.

## OXFORD, OH

### MIAMI UNIVERSITY (OXD)

TAKEOFF MINIMUMS AND (OBSTACLE)  
DEPARTURE PROCEDURES  
AMDT 2 12152 (FAA)

TAKEOFF OBSTACLE NOTES: **Rwy 5**, trees beginning 314' from DER, left and right of centerline, up to 100' AGL/1129' MSL. Vehicles on roadway beginning 320' from DER, 282' right of centerline, up to 15' AGL/1044' MSL. Poles beginning 695' from DER, 209' left of centerline, up to 35' AGL/1061' MSL. Rod on building 764' from DER, 501' left of centerline, 33' AGL/1060' MSL. Light poles beginning 966' from DER, 518' right of centerline, up to 70' AGL/1084' MSL. **Rwy 23**, vehicles on roadway beginning 136' from DER, left and right of centerline, up to 15' AGL/1054' MSL. Poles beginning 139' from DER, 178' left of centerline, up to 33' AGL/1072' MSL. Trees beginning 256' from DER, left and right of centerline, up to 100' AGL/1149' MSL. Buildings beginning 269' from DER, left and right of centerline, up to 33' AGL/1068' MSL. Chimney 327' from DER, 432' left of centerline, 34' AGL/ 1070' MSL. Antenna 1076' from DER, 243' left of centerline, 43' AGL/1 073' MSL.

## PAINESVILLE, OH

### CONCORD AIRPARK (2G1)

TAKEOFF MINIMUMS AND (OBSTACLE)  
DEPARTURE PROCEDURES  
AMDT 3 10322 (FAA)

TAKEOFF MINIMUMS: **Rwy 20**, 400-2¾ or std. w/ a min. climb of 400' per NM to 1500.  
DEPARTURE PROCEDURE: **Rwy 20**, climb heading 209° to 1500 before proceeding on course.  
TAKEOFF OBSTACLE NOTES: **Rwy 2**, trees beginning 336' from DER, 42' left of centerline, up to 100' AGL/1039' MSL. Trees beginning 1064' from DER, 217' right of centerline, up to 100' AGL/1039' MSL. **Rwy 20**, trees beginning 131' from DER, left and right of centerline, up to 100' AGL/1220' MSL. Tower 1.2 NM from DER, 2020' right of centerline, 114' AGL/1223' MSL.

## PERU, IN

### PERU MUNI (I76)

TAKEOFF MINIMUMS AND (OBSTACLE)  
DEPARTURE PROCEDURES  
AMDT 3 07018 (FAA)

TAKEOFF OBSTACLE NOTES: **Rwy 1**, multiple trees beginning 2201' from DER, 321' left of centerline, 100' AGL/879' MSL. Road plus vehicle beginning 407' from DER, 1524' right of centerline, 15' AGL/794' MSL. Trees beginning 1656' from DER, 815' right of centerline, 100' AGL/879' MSL. **Rwy 19**, multiple trees beginning 44' from DER, 204' left of centerline, 100' AGL/869' MSL. Multiple trees beginning 588' from DER, 134' right of centerline, 100' AGL/859' MSL.

## PHILLIPSBURG, OH

### PHILLIPSBURG (317)

TAKEOFF MINIMUMS AND (OBSTACLE)  
DEPARTURE PROCEDURES  
TAKEOFF MINIMUMS: **Rwy 21**, 300-1.

## PIQUA, OH

### PIQUA AIRPORT-HARTZELL FIELD (I17)

TAKEOFF MINIMUMS AND (OBSTACLE)  
DEPARTURE PROCEDURES  
ORIG 11293 (FAA)

TAKEOFF OBSTACLE NOTES: **Rwy 8**, tree 2006' from DER, 515' left of centerline, 76' AGL/1062' MSL. **Rwy 26**, vehicles on roadway, beginning 347' from DER, 578' left of centerline, up to 15' AGL/1024' MSL. Trees and grain bin beginning 61' from DER, 321' left of centerline, up to 100' AGL/1119' MSL.

## PLYMOUTH, IN

### PLYMOUTH MUNI (C65)

TAKEOFF MINIMUMS AND (OBSTACLE)  
DEPARTURE PROCEDURES  
ORIG 74199 (FAA)  
TAKEOFF MINIMUMS: **Rwys 10, 28**, 300-1.

# TAKEOFF MINIMUMS, (OBSTACLE) DEPARTURE PROCEDURES, AND DIVERSE VECTOR AREA (RADAR VECTORS)

17285

EC-2

# TAKEOFF MINIMUMS, (OBSTACLE) DEPARTURE PROCEDURES, AND DIVERSE VECTOR AREA (RADAR VECTORS)

17285

## PORT CLINTON, OH

### ERIE-OTTAWA INTL (PCW)

TAKEOFF MINIMUMS AND (OBSTACLE)

DEPARTURE PROCEDURES

AMDT 6A 15316 (FAA)

TAKEOFF MINIMUMS: **Rwy 27**, std. w/ min. climb of 250' per NM to 1600 or 1000-2½ for climb in visual conditions.DEPARTURE PROCEDURE: **Rwy 27**, for climb in visual conditions: cross Carl R Keller Field at or above 1400 MSL before proceeding on course.

TAKEOFF OBSTACLE NOTES: **Rwy 9**, multiple trees and poles beginning 417' from DER, 398' left of centerline, up to 78' AGL/668' MSL. Multiple trees and poles beginning 407' from DER, 550' right of centerline, up to 67' AGL/657' MSL. **Rwy 18**, multiple trees beginning 626' from DER, 424' left of centerline, up to 100' AGL/684' MSL. Trees 511' from DER, 471' right of centerline, 100' AGL/684' MSL. Vehicles on road 475' from DER, 31' right of centerline, 15' AGL/604' MSL. **Rwy 27**, multiple trees beginning 1210' from DER, 176' left of centerline, up to 65' AGL/650' MSL. Pole 1066' from DER, 609' right of centerline, 35' AGL/620' MSL. Multiple trees beginning 2558' from DER, 311' right of centerline, up to 91' AGL/676' MSL. **Rwy 36**, trees 558' from DER, 406' left of centerline, 100' AGL/684' MSL. Trees 770' from DER, 564' right of centerline, 100' AGL/679' MSL. Trees 5097' from DER, 1661' right of centerline, 100' AGL/719' MSL.

## PORTLAND, IN

### PORTLAND MUNI (PLD)

TAKEOFF MINIMUMS AND (OBSTACLE)

DEPARTURE PROCEDURES

ORIG-A 13234 (FAA)

TAKEOFF OBSTACLE NOTES: **Rwy 9**, poles, trees and fence beginning 29' from DER, 348' right of centerline, up to 53' AGL/979' MSL. Poles and trees beginning 102' from DER, 514' left of centerline, up to 51' AGL/972' MSL. Trees and poles beginning 1026' from DER, 80' right of centerline, up to 71' AGL/994' MSL. Trees and poles beginning 1036' from DER, 12' left of centerline, up to 46' AGL/972' MSL. Trees beginning 2044' from DER, 47' right of centerline, up to 113' AGL/1035' MSL. Trees beginning 2797' from DER, 15' left of centerline, up to 104' AGL/1027' MSL. **Rwy 27**, Trees beginning 262' from DER, 317' left of centerline, up to 28' AGL/932' MSL. Trees 293' from DER, 474' right of centerline, 16' AGL/922' MSL. Building 1124' from DER, 617' right of centerline, 32' AGL/942' MSL.

## PORTSMOUTH, OH

### GREATHER PORTSMOUTH RGNL (PMH)

TAKEOFF MINIMUMS AND (OBSTACLE)

DEPARTURE PROCEDURES

AMDT 3 12152 (FAA)

TAKEOFF MINIMUMS: **Rwy 18**, 300-1¼ or std. w/min. climb of 257' per NM to 1100.DEPARTURE PROCEDURE: **Rwy 18**, climb heading 170° to 1300 before proceeding on course.

TAKEOFF OBSTACLE NOTES: **Rwy 18**, trees beginning 4' from DER, 290' left of centerline, up to 100' AGL/721' MSL. Trees beginning 678' from DER, 495' right of centerline, up to 100' AGL/931' MSL. **Rwy 36**, trees beginning 1' from DER, 180' left of centerline, up to 100' AGL/780' MSL. Trees beginning 687' from DER, 388' right of centerline, up to 100' AGL/710' MSL.

## RAVENNA, OH

### PORTAGE COUNTY (POV)

TAKEOFF MINIMUMS AND (OBSTACLE)

DEPARTURE PROCEDURES

ORIG 10322 (FAA)

TAKEOFF OBSTACLE NOTES: **Rwy 9**, power poles and road 19' from DER, 368' left of centerline, up to 35' AGL/1238' MSL. Power pole 413' from DER, 549' right of centerline, 35' AGL/1218' MSL. **Rwy 27**, tree 751' from DER, 148' right of centerline, 56' AGL/1226' MSL. Pole 105' from DER, 523' right of centerline, 35' AGL/1200' MSL. Power poles 357' from DER, 408' left of centerline, up to 35' AGL/1244' MSL.

## RENSSSLAER, IN

### JASPER COUNTY (RZL)

TAKEOFF MINIMUMS AND (OBSTACLE)

DEPARTURE PROCEDURES

AMDT 1 88014 (FAA)

TAKEOFF MINIMUMS: **Rwys 9, 18, 27, 36, 300-1**. DEPARTURE PROCEDURE: **Rwys 9, 18, 27, 36**, climb to 1100 on runway heading before proceeding on course.

## RICHMOND, IN

### RICHMOND MUNI (RID)

TAKEOFF MINIMUMS AND (OBSTACLE)

DEPARTURE PROCEDURES

ORIG 09183 (FAA)

TAKEOFF MINIMUMS: **Rwys 10, 28**, NA-Environmental.

TAKEOFF OBSTACLE NOTES: **Rwy 15**, tree 2970' from DER, 198' right of centerline, 86' AGL/1226' MSL. **Rwy 24**, road and antenna beginning 298' from DER, 7' right of centerline, up to 22' AGL/1156' MSL. Trees beginning 1185' from DER, 529' left of centerline, up to 40' AGL/1174' MSL. Obstruction light on localizer 300' from DER, on centerline, 8' AGL/1142' MSL. **Rwy 33**, trees beginning 515' from DER, 283' right of centerline, up to 48' AGL/1175' MSL. Antenna and trees beginning 1041' from DER, 141' left of centerline, up to 71' AGL/1198' MSL.

## ROCHESTER, IN

### FULTON COUNTY (RCR)

TAKEOFF MINIMUMS AND (OBSTACLE)

DEPARTURE PROCEDURES

ORIG 08269 (FAA)

TAKEOFF OBSTACLE NOTES: **Rwy 11**, terrain 469' right of centerline, 797' MSL. Trees beginning 619' from DER, 181' right of centerline, up to 105' AGL/894' MSL. Trees beginning 2534' from DER, 27' left of centerline, up to 97' AGL/886' MSL. **Rwy 29**, pole 1' from DER, 480' left of centerline, 28' AGL/817' MSL. Pole 195' from DER, 460' left of centerline, 28' AGL/817' MSL. Pole 524' from DER, 503' left of centerline, 33' AGL/823' MSL. Vehicle on road 578' from DER, 100' left of centerline, 15' AGL/804' MSL. Vent on building 890' from DER, 262' left of centerline, 23' AGL/812' MSL. Trees beginning 614' from DER, 355' left of centerline, up to 87' AGL/876' MSL. Vent on building 229' from DER, 525' right of centerline, 40' AGL/829' MSL. Pole 843' from DER, 94' right of centerline, 23' AGL/812' MSL. Trees beginning 883' from DER, 152' right of centerline, up to 103' AGL/892' MSL.

# TAKEOFF MINIMUMS, (OBSTACLE) DEPARTURE PROCEDURES, AND DIVERSE VECTOR AREA (RADAR VECTORS)

17285

EC-2

04 JAN 2018 to 01 FEB 2018

04 JAN 2018 to 01 FEB 2018



# TAKEOFF MINIMUMS, (OBSTACLE) DEPARTURE PROCEDURES, AND DIVERSE VECTOR AREA (RADAR VECTORS)

17285

## ST. CLAIRSVILLE, OH

### ALDERMAN (2P7)

TAKEOFF MINIMUMS AND (OBSTACLE)

DEPARTURE PROCEDURES

AMDT 3 10350 (FAA)

TAKEOFF MINIMUMS: **Rwy 1**, 300-1¼ or std. w/ min. climb of 395' per NM to 1800. **Rwy 19**, 500-3 or std. w/ min. climb of 244' per NM to 1800.

DEPARTURE PROCEDURE: **Rwy 1**, Climb heading 013° to 1800 before turning right. **Rwy 19**, Climb heading 193° to 1800 before proceeding on course.

TAKEOFF OBSTACLE NOTES: **Rwy 1**, trees 49' from DER, 170' left of centerline, up to 90' AGL/1269' MSL. Trees 179' from DER, 53' left of centerline, up to 90' AGL/1249' MSL. Trees 210' from DER, 37' right of centerline, up to 90' AGL/1249' MSL. **Rwy 19**, trees 141' from DER, 138' left of centerline, up to 90' AGL/1229' MSL. Trees 154' from DER, 168' right of centerline. Up to 90' AGL/1249' MSL. Trees 385' from DER, 34' right of centerline, up to 90' AGL/1229' MSL. Trees 1764' from DER, 958' right of centerline, up to 90' AGL/1309' MSL.

## SALEM, OH

### SALEM AIRPARK, INC (38D)

TAKEOFF MINIMUMS AND (OBSTACLE)

DEPARTURE PROCEDURES

AMDT 1 97058 (FAA)

DEPARTURE PROCEDURE: **Rwys 10, 28**, climb runway heading to 2200 before turning south.

## SEBRING, OH

### TRI-CITY (3G6)

TAKEOFF MINIMUMS AND (OBSTACLE)

DEPARTURE PROCEDURES

ORIG 76036 (FAA)

DEPARTURE PROCEDURE: **Rwys 17, 35**, climb runway heading to 3000 before turning east.

## SEYMOUR, IN

### FREEMAN MUNI (SER)

TAKEOFF MINIMUMS AND (OBSTACLE)

DEPARTURE PROCEDURES

ORIG 07130 (FAA)

DEPARTURE PROCEDURE: **Rwy 5**, climb heading 046° to 1100 before turning left. **Rwy 14**, climb heading 136° to 1100 before turning right.

TAKEOFF OBSTACLE NOTES: **Rwy 5**, multiple trees beginning 845' from DER, 523' left of centerline, up to 90' AGL/669' MSL. Multiple towers beginning 2870' from DER, 1231' left of centerline, up to 73' AGL/657' MSL. Multiple trees beginning 1035' from DER, 691' right of centerline, up to 73' AGL/652' MSL. **Rwy 14**, multiple trees beginning 2285' from DER, 309' right of centerline, up to 78' AGL/657' MSL. **Rwy 32**, multiple trees beginning 2339' from DER, 383' left of centerline, up to 63' AGL/662' MSL.

## SHELBY, OH

### SHELBY COMMUNITY (12G)

TAKEOFF MINIMUMS AND (OBSTACLE)

DEPARTURE PROCEDURES

AMDT 2 12096 (FAA)

TAKEOFF OBSTACLE NOTES: **Rwy 18**, trees beginning 9' from DER, 171' left of centerline, up to 100' AGL/1219' MSL. Vehicles beginning 24' from DER, 303' left of centerline, up to 15' AGL/1134' MSL. Trees beginning 338' from DER, 447' right of centerline, up to 100' AGL/1229' MSL. Transmission line beginning 2127' from DER, 170' left and right of centerline, up to 91' AGL/1200' MSL. **Rwy 36**, vehicles beginning 30' from DER, left and right of centerline, up to 17' AGL/1136' MSL. Buildings beginning 63' from DER, left and right of centerline, up to 53' AGL/1172' MSL. Trees beginning 561' from DER, 85' left of centerline, up to 100' AGL/1209' MSL. Grain silos beginning 1799' from DER, 225' right of centerline, up to 100' AGL/1229' MSL.

## SHELBYVILLE, IN

### SHELBYVILLE MUNI (GEZ)

TAKEOFF MINIMUMS AND (OBSTACLE)

DEPARTURE PROCEDURES

AMDT 5 11293 (FAA)

TAKEOFF MINIMUMS: **Rwys 9,27**, NA-Environmental. TAKEOFF OBSTACLE NOTES: **Rwy 1**, trees 1111' from DER, 753' right of centerline, 69' AGL/869' MSL. **Rwy 19**, trees 2180' from DER, 261' right of centerline, 100' AGL/899' MSL. Trees 2696' from DER, 498' left of centerline, 100' AGL/899' MSL.

## SIDNEY, OH

### SIDNEY MUNI (SCA)

TAKEOFF MINIMUMS AND (OBSTACLE)

DEPARTURE PROCEDURES

AMDT 3 14037 (FAA)

TAKEOFF OBSTACLE NOTES: **Rwy 5**, trees beginning 1695' from DER, 686' right of centerline, up to 100' AGL/1149' MSL. Power poles beginning 2125' from DER, crossing centerline, up to 100' AGL/1149' MSL. Trees beginning 3071' from DER, 402' right of centerline, up to 100' AGL/1149' MSL. Tree 3247' from DER, 894' left of centerline, 100' AGL/1149' MSL. Trees beginning 3723' from DER, 208' left of centerline, up to 100' AGL/1149' MSL. **Rwy 10**, terrain beginning 26' from DER, 72' right of centerline, up to 1048' MSL. Terrain beginning 36' from DER, 109' left of centerline, up to 1048' MSL. Tree 834' from DER, 238' left of centerline, 49' AGL/1100' MSL. Trees beginning 1060' from DER, 492' right of centerline, up to 100' AGL/1154' MSL. Trees beginning 3577' from DER, 48' right of centerline, up to 90' AGL/1141' MSL. **Rwy 23**, vehicles and aircraft on ramp beginning at DER, 138' left of centerline, up to 15' AGL/1054' MSL. Trees beginning at DER, 308' left of centerline, up to 100' AGL/1149' MSL. Vehicles on road beginning 110' from DER, crossing centerline, up to 15' AGL/1054' MSL. Trees beginning 902' from DER, crossing centerline, up to 100' AGL/1149' MSL. **Rwy 28**, sign 5' from DER, 56' left of centerline, 2' AGL/1041' MSL. Trees beginning 1261' from DER, 405' right of centerline, up to 71' AGL/1102' MSL. Trees beginning 1658' from DER, crossing centerline, up to 93' AGL/1114' MSL.

04 JAN 2018 to 01 FEB 2018

04 JAN 2018 to 01 FEB 2018

# TAKEOFF MINIMUMS, (OBSTACLE) DEPARTURE PROCEDURES, AND DIVERSE VECTOR AREA (RADAR VECTORS)

17285

EC-2


**TAKEOFF MINIMUMS, (OBSTACLE) DEPARTURE PROCEDURES, AND**


17285

**DIVERSE VECTOR AREA (RADAR VECTORS)****SOUTH BEND, IN****SOUTH BEND (SBN)**

TAKEOFF MINIMUMS AND (OBSTACLE)

DEPARTURE PROCEDURES

AMDT 9 09239 (FAA)

TAKEOFF MINIMUMS: **Rwy 27R**, 300-1¼ or std. w/ min. climb of 240' per NM to 1100. Alternatively, with standard TAKEOFF minimums and a normal 200'/NM climb gradient, TAKEOFF must occur no later than 1800' prior to DER.

DEPARTURE PROCEDURE: **Rwy 9R**, climb heading 092° to 2000 before turning South. **Rwy 18**, climb heading 182° to 2000 before turning East.

TAKEOFF OBSTACLE NOTES: **Rwy 9L**, tree 1226' from DER, 367' left of centerline, 60' AGL/831' MSL. Tree 1332' from DER, 93' right of centerline, 50' AGL/822' MSL. Transmission tower 2159' from DER, 392' left of centerline, 117' AGL/872' MSL. **Rwy 18**, power line and fence 199' from DER, left and right of centerline, up to 20' AGL/775' MSL. Multiple trees and poles beginning 684' from DER, from 829' left to 720' right of centerline, up to 80' AGL/849' MSL. **Rwy 27L**, light pole 665' from DER, 479' left of centerline, 22' AGL/810' MSL. Trees beginning 1190' from DER, from 948' left to 900' right of centerline, up to 100' AGL/923' MSL. **Rwy 27R**, tree 207' from DER, 502' right of centerline, 60' AGL/849' MSL. Tree 1541' from DER, 93' left of centerline, 60' AGL/850' MSL. Transmission tower 5542' from DER, 1922' right of centerline, 100' AGL/954' MSL. **Rwy 36**, terrain 98' from DER, 390' left of centerline, 803' MSL. Barricade 130' from DER, 418' left of centerline, 10' AGL/807' MSL. Trees beginning 340' from DER, 332' right of centerline, up to 36' AGL/815' MSL. Tree 2726' from DER, 443' left of centerline, 60' AGL/867' MSL.

**SPRINGFIELD, OH****SPRINGFIELD-BECKLEY MUNI (SGH)**

TAKEOFF MINIMUMS AND (OBSTACLE)

DEPARTURE PROCEDURES

ORIG 08157 (FAA)

TAKEOFF OBSTACLE NOTES: **Rwy 6**, Trees beginning 642' from DER, 664' left of centerline, up to 96' AGL/1133' MSL. Tree 66' from DER, 514' right of centerline, 27' AGL/1064' MSL. **Rwy 15**, Multiple trees beginning 1357' from DER, 160' left of centerline, up to 86' AGL/1127' MSL. Tree 1763' from DER, 410' right of centerline, 51' AGL/1092' MSL. **Rwy 24**, Trees beginning 1387' from DER, 66' left of centerline, up to 58' AGL/1109' MSL. Windsock 1' from DER, 228' right of centerline, 20' AGL/1071' MSL. **Rwy 33**, Tree 183' from DER, 438' right of centerline, 24' AGL/1066' MSL.

**STEUBENVILLE, OH****JEFFERSON COUNTY AIRPARK (2G2)**

TAKEOFF MINIMUMS AND (OBSTACLE)

DEPARTURE PROCEDURES

AMDT 2 16315 (FAA)

TAKEOFF MINIMUMS: **Rwy 32**, 300-1¼ or std. w/min. climb of 280' per NM to 1600.

DEPARTURE PROCEDURE: **Rwy 14**, climb on heading 142° to 2100 before turning left.

TAKEOFF OBSTACLE NOTES: **Rwy 14**, tree 32' from DER, 500' right of centerline, 73' AGL/1240' MSL. Tree 58' from DER, 448' right of centerline, 71' AGL/1245' MSL. Trees beginning 113' from DER, 329' left of centerline, up to 43' AGL/1207' MSL. Trees, beginning 162' from DER, 210' right of centerline, up to 74' AGL/1251' MSL. Trees, beginning 196' from DER, 186' left of centerline, up to 60' AGL/1208' MSL. Trees, beginning 221' from DER, 184' left of centerline, up to 54' AGL/1209' MSL. Trees, beginning 240' from DER, 24' right of centerline, up to 96' AGL/1258' MSL. Tree 376' from DER, 513' left of centerline, 96' AGL/1235' MSL.

**Rwy 32**, tree, bush, beginning 0' from DER, 334' left of centerline, up to 59' AGL/1244' MSL. Tree, ground, bush, beginning 113' from DER, 392' left of centerline, up to 67' AGL/1246' MSL. Ant 1.3 NM from DER, 760' left of centerline, 193' AGL/1405' MSL. Tower 1.3 NM from DER, 764' left of centerline, 199' AGL/1411' MSL.

**SULLIVAN, IN****SULLIVAN COUNTY (SIV)**

TAKEOFF MINIMUMS AND (OBSTACLE)

DEPARTURE PROCEDURES

AMDT 1 99364 (FAA)

TAKEOFF MINIMUMS: **Rwys 18, 36**, 200-1 or std. with a min. climb of 320' per NM to 1800.

DEPARTURE PROCEDURE: **Rwy 18**, climb runway heading to 1500 before turning west on course.

**Rwys 18,36**, climb runway heading to 1800 before turning east on course.

**TELL CITY, IN****PERRY COUNTY MUNI (TEL)**

TAKEOFF MINIMUMS AND (OBSTACLE)



DEPARTURE PROCEDURES

AMDT 2 11237 (FAA)

TAKEOFF OBSTACLE NOTES: **Rwy 13**, fence, terrain, buildings, and trees beginning 8' from DER, 131' left of centerline, up to 49' AGL/ 740' MSL. Terrain, trees, and poles beginning 93' from DER, 19' right of centerline, up to 30' AGL/750' MSL. **Rwy 31**, trees, terrain, and pole beginning 125' from DER, 141' left of centerline, up to 25' AGL/702' MSL. Trees, terrain, and tower beginning 68' from DER, 64' right of centerline, up to 56' AGL/ 648' MSL.

04 JAN 2018 to 01 FEB 2018

04 JAN 2018 to 01 FEB 2018


**TAKEOFF MINIMUMS, (OBSTACLE) DEPARTURE PROCEDURES, AND**


17285

**DIVERSE VECTOR AREA (RADAR VECTORS)**

L25

EC-2

# TAKEOFF MINIMUMS, (OBSTACLE) DEPARTURE PROCEDURES, AND DIVERSE VECTOR AREA (RADAR VECTORS)

17285

## TERRE HAUTE, IN

### SKY KING (313)

TAKEOFF MINIMUMS AND (OBSTACLE)  
DEPARTURE PROCEDURES

AMDT 4 16147 (FAA)

TAKEOFF MINIMUMS: **Rwys 18 ,36**, NA -  
Environmental.

DEPARTURE PROCEDURE: **Rwy 26**, climb heading  
268° to 1300 before turning left.

TAKEOFF OBSTACLE NOTES: **Rwy 8**, multiple power  
lines beginning 34' from DER, left and right of centerline,  
up to 30' AGL/529' MSL. Vehicle on road beginning 54'  
from DER, left and right of centerline, up to 15' AGL/519'  
MSL. Fence beginning 33' from DER, left and right of  
centerline, up to 6' AGL/505' MSL. Multiple buildings  
beginning 167' from DER, left and right of centerline, up  
to 20' AGL/519' MSL. Trees beginning 122' from DER,  
left and right of centerline, up to 60' AGL/589' MSL.

**Rwy 26**, trees beginning abeam DER, 235' right of  
centerline, up to 60' AGL/559' MSL. Trees beginning  
abeam DER, 382' left of centerline, up to 60' AGL/539'  
MSL. Trees beginning 1057' from DER, 47' left of  
centerline, up to 60' AGL/539' MSL.

## TERRE HAUTE INTL-HULMAN FIELD

### (HUF)

TAKEOFF MINIMUMS AND (OBSTACLE)  
DEPARTURE PROCEDURES

ORIG 08213 (FAA)

TAKEOFF OBSTACLE NOTES: **Rwy 5**, Terrain beginning  
118' from DER, left and right of centerline, 0' AGL/591'  
MSL. Floodlight 967' from DER, 673' right of centerline,  
32' AGL/621' MSL. Trees beginning 2019' from DER,  
317' left of centerline, up to 100' AGL/689' MSL. Tree  
3340' from DER, 533' right of centerline, 79' AGL/668'  
MSL. **Rwy 14**, trees beginning 1266' from DER, 570' left  
of centerline, up to 100' AGL/689' MSL. Trees beginning  
1,520' from DER 462' right of centerline, up to 100'  
AGL/689' MSL. Power lines 3084' from DER, left and  
right of centerline, 98' AGL/682' MSL. **Rwy 18**, terrain  
beginning 84' from DER, left and right of centerline, 0'  
AGL/581' MSL. Trees beginning 3040' from DER, 192'  
left of centerline, up to 66' AGL/655' MSL. **Rwy 23**,  
trees beginning 412' from DER, 537' left of centerline,  
up to 34' AGL/593' MSL. Tree 1201' from DER, 376'  
right of centerline, 38' AGL/607' MSL. **Rwy 32**, trees  
and a pole beginning 397' from DER, 308' left of  
centerline, up to 82' AGL/651' MSL. Tree 1195' from  
DER 544' left of centerline, 68' AGL/637' MSL. Trees  
beginning 2597' from DER, 340' right of centerline, up to  
100' AGL/669' MSL. **Rwy 36**, trees beginning 1580'  
from DER, 120' right of centerline, up to 100' AGL/669'  
MSL. Trees beginning 2475' from DER, 153' left of  
centerline, up to 102' AGL/671' MSL.

## TIFFIN, OH

### SENECA COUNTY(16G)

TAKEOFF MINIMUMS AND (OBSTACLE)  
DEPARTURE PROCEDURES

AMDT 2 09183 (FAA)

TAKEOFF OBSTACLE NOTES: **Rwy 6**, multiple trees and  
buildings beginning 2' from DER, 186' right of centerline,  
up to 98' AGL/868' MSL. Antenna 129' from DER, 438'  
left of centerline, 66' AGL/836' MSL. Pole 408' from DER,  
477' left of centerline, 39' AGL/809' MSL. Vehicle on road  
501' from DER, 414' left of centerline, 26' AGL/796' MSL.  
Trees 2421' from DER, 207' left of centerline, 83'  
AGL/853' MSL. **Rwy 24**, multiple trees beginning 27'  
from DER, 280' left of centerline, up to 124' AGL/904'  
MSL. Building 1291' from DER, 528' left of centerline, 44'  
AGL/824' MSL. Multiple trees beginning 1071' from DER,  
337' right of centerline, up to 92' AGL/872' MSL. Pole  
1460' from DER, 562' right of centerline, 48' AGL/828'  
MSL.

## TOLEDO, OH

### TOLEDO EXECUTIVE (TDZ)

TAKEOFF MINIMUMS AND (OBSTACLE)  
DEPARTURE PROCEDURES

AMDT 2A 07326 (FAA)

TAKEOFF MINIMUMS: **Rwys 14, 22, 32**, 300-1. **Rwy 4**,  
2100-2 or std. with a min. climb of 300' per NM to 2100.

DEPARTURE PROCEDURE: **Rwys 14, 22, 32**, climb  
runway heading to 2000 before turning.

TAKEOFF OBSTACLE NOTES: **Rwy 14**, tree 789' from  
DER, 249' left of centerline, 61' AGL/685' MSL.

## TOLEDO EXPRESS (TOL)

TAKEOFF MINIMUMS AND (OBSTACLE)  
DEPARTURE PROCEDURES

AMDT 2 89040 (FAA)

TAKEOFF MINIMUMS: **Rwy 16**, 300-1 or std. with a min.  
climb of 260' per NM to 1000'.

DEPARTURE PROCEDURE: **Rwy 25**, climb runway  
heading to 1100' before turning.

## UPPER SANDUSKY, OH

### WYANDOT COUNTY (56D)

TAKEOFF MINIMUMS AND (OBSTACLE)  
DEPARTURE PROCEDURES

ORIG 80150 (FAA)

TAKEOFF MINIMUMS: **Rwy 36**, 300-1.

## URBANA, OH

### GRIMES FIELD (174)

TAKEOFF MINIMUMS AND (OBSTACLE)  
DEPARTURE PROCEDURES

AMDT 1 10266 (FAA)

TAKEOFF OBSTACLE NOTES: **Rwy 2**, numerous trees  
beginning 995' from DER, 6' left of centerline, up to 100'  
AGL/1152' MSL. Numerous trees beginning from 2106'  
from DER, 327' right of centerline, up to 100' AGL/1140'  
MSL. Numerous power poles 1204' from DER, 654' right  
of centerline, 55' AGL/1125' MSL. **Rwy 20**, numerous  
trees beginning 5' from DER, 487' left of centerline, up to  
100' AGL/1111' MSL. Tank 5459' from DER, 1062' left of  
centerline, 170' AGL/1195' MSL. Numerous trees  
beginning 672' from DER, 92' right of centerline, up to  
100' AGL/1120' MSL.

# TAKEOFF MINIMUMS, (OBSTACLE) DEPARTURE PROCEDURES, AND DIVERSE VECTOR AREA (RADAR VECTORS)

17285

EC-2

04 JAN 2018 to 01 FEB 2018

04 JAN 2018 to 01 FEB 2018

# TAKEOFF MINIMUMS, (OBSTACLE) DEPARTURE PROCEDURES, AND DIVERSE VECTOR AREA (RADAR VECTORS)

17285

## VALPARAISO, IN

PORTER COUNTY RGNL (VPZ)  
TAKEOFF MINIMUMS AND (OBSTACLE)  
DEPARTURE PROCEDURES  
ORIG 08045 (FAA)

TAKEOFF OBSTACLE NOTES: **Rwy 9**, Tree 51' from DER, 350' right of centerline, 100' AGL/874' MSL. Tree 1219' from DER, 775' left of centerline, 57' AGL/807' MSL. **Rwy 18**, Tower and multiple trees beginning 140' from DER, 157' right of centerline, up to 100' AGL/865' MSL. Trees 143' from DER, 71' left of centerline, 100' AGL/865' MSL. **Rwy 27**, Multiple trees, 1038' from DER, 308' left of centerline, up to 68' AGL/828' MSL. Sign, 1847' from DER, 263' right of centerline, 49' AGL/817' MSL. **Rwy 36**, Trees 105' from DER, 99' right of centerline, 100' AGL/895' MSL. Trees 108' from DER, 129' left of centerline, 100' AGL/874' MSL.

## VAN WERT, OH

VAN WERT COUNTY (VNW)  
TAKEOFF MINIMUMS AND (OBSTACLE)  
DEPARTURE PROCEDURES  
AMDT 3 09015 (FAA)

TAKEOFF MINIMUMS: **Rwy 9**, 300-1¼ or std. w/ min. climb of 306' per NM to 1100. **Rwys 18, 36**, NA-Environmental.  
TAKEOFF OBSTACLE NOTES: **Rwy 9**, tower 6084' from DER, 1963' left of centerline, 170' AGL/955' MSL.

## VERSAILLES, OH

DARKE COUNTY (VES)  
TAKEOFF MINIMUMS AND (OBSTACLE)  
DEPARTURE PROCEDURES  
AMDT 2A 10154 (FAA)

TAKEOFF OBSTACLE NOTES: **Rwy 9**, trees 149' from DER, 353' left of centerline up to 50' AGL/1085' MSL. Tower 320' from DER, 326' left of centerline, 30' AGL/1033' MSL. Vehicle on road, 434' from DER, on centerline, 15' AGL/1019' MSL. **Rwy 27**, vehicle on road, 373' from DER, on centerline, 15' AGL/1019' MSL.

## WABASH, IN

WABASH MUNI (IWH)  
TAKEOFF MINIMUMS AND (OBSTACLE)  
DEPARTURE PROCEDURES  
ORIG 15344 (FAA)

TAKEOFF OBSTACLE NOTES: **Rwy 9**, trees beginning 194' from DER, left and right of centerline, up to 110' AGL/910' MSL. **Rwy 18**: trees beginning 310' from DER, 128' left of centerline, up to 83' AGL/873' MSL. **Rwy 27**, poles and power line beginning 484' from DER, left and right of centerline, up to 44' AGL/840' MSL. Vehicles on road beginning 502' from DER, left and right of centerline, up to 15' AGL/813' MSL. Tree 517' from DER, 618' left of centerline, 77' AGL/871' MSL. Trees beginning 624' from DER, left and right of centerline, up to 64' AGL/855' MSL. Poles and power line beginning 1613' from DER, left and right of centerline, up to 48' AGL/853' MSL. **Rwy 36**, buildings beginning 31' from DER, 272' left of centerline, up to 25' AGL/815' MSL. Trees beginning 459' from DER, left and right of centerline, up to 70' AGL/876' MSL. Vehicles on road 469' from DER, left and right of centerline, up to 15' AGL/804' MSL.

## WADSWORTH, OH

WADSWORTH MUNI (3G3)  
TAKEOFF MINIMUMS AND (OBSTACLE)  
DEPARTURE PROCEDURES  
AMDT 1 08101 (FAA)

TAKEOFF MINIMUMS: **Rwy 2**, std. w/ min. climb of 412' per NM to 1700, or 600-2 ½ with minimum climb of 289' per NM to 1900, or 1100-2½ for climb in visual conditions. **Rwy 10**, std. w/ min. climb of 585' per NM to 1800, or 700-3 with minimum climb of 340' per NM to 1800, or 1100-2½ for climb in visual conditions.  
**Rwy 20**, 300-1¼ or std. w/ min. climb of 336' per NM to 1300. **Rwy 28**, 400-2½ or std. w/ min. climb of 457' per NM to 1500.

DEPARTURE PROCEDURE: **Rwy 2**, for climb in visual conditions: cross Wadsworth Muni airport at or above 1900 MSL before proceeding on course. **Rwy 10**, for climb in visual conditions: cross Wadsworth Muni airport at or above 1900 MSL before proceeding on course. **Rwy 28**, climb heading 277° to 1600 before proceeding on course.

TAKEOFF OBSTACLE NOTES: **Rwy 2**, vehicle on road 23' from DER, 404' right of centerline, 15' AGL/994' MSL. Power line 1425' from DER, left and right of centerline, 40' AGL/1029' MSL. Trees beginning 2947' from DER, 80' left of centerline, up to 100' AGL/1129' MSL. Trees beginning 4490' from DER, 119' right of centerline, up to 100' AGL/1249' MSL. **Rwy 10**, trees beginning 2813' from DER, 245' right of centerline, up to 100' AGL/1289' MSL. Trees beginning 1659' from DER, 56' left of centerline, up to 100' AGL/1319' MSL. **Rwy 20**, vehicle on road 289' from DER, left and right of centerline, 15' AGL/994' MSL. Trees beginning 389' from DER, 194' left of centerline, up to 100' AGL/1079' MSL. Trees beginning 1921' from DER, 605' right of centerline, up to 100' AGL/1099' MSL. **Rwy 28**, building 249' from DER, 530' right of centerline, 24' AGL/989' MSL. Trees beginning 169' from DER, 198' left of centerline, up to 100' AGL/1079' MSL. Trees beginning 3698' from DER, 9' right of centerline, up to 100' AGL/1299' MSL.

## WAPAKONETA, OH

NEIL ARMSTRONG (AXV)  
TAKEOFF MINIMUMS AND (OBSTACLE)  
DEPARTURE PROCEDURES  
AMDT 2 08213 (FAA)

TAKEOFF OBSTACLE NOTES: **Rwy 8**, vehicle on road, 1' from DER, 403' right of centerline, 15' AGL/926' MSL. Fence 70' from DER, 222' right of centerline, 6' AGL/919' MSL. Fence 149' from DER, 270' left of centerline, 8' AGL/921' MSL. Obstruction light on pole, 348' from DER, 239' left of centerline, 15' AGL/928' MSL. Building, 614' from DER, 463' left of centerline, 15' AGL/929' MSL. Trees beginning 2385' from DER, 51' left of centerline, up to 101' AGL/1014' MSL. Trees beginning 2263' from DER, 268' right of centerline, up to 75' AGL/988' MSL. **Rwy 26**, obstruction light on DME, 401' from DER, 268' right of centerline, 9' AGL/922' MSL. Trees beginning 496' from DER, 51' right of centerline, up to 83' AGL/996' MSL. Trees beginning 563' from DER, 120' left of centerline, up to 72' AGL/985' MSL. Pole 620' from DER, 332' left of centerline, 25' AGL/938' MSL. Stack, 3021' from DER, 577' left of centerline, 125' AGL/1035' MSL. Tower, 3265' from DER, 729' right of centerline, 149' AGL/1050' MSL.

# TAKEOFF MINIMUMS, (OBSTACLE) DEPARTURE PROCEDURES, AND DIVERSE VECTOR AREA (RADAR VECTORS)

17285

L27

EC-2

04 JAN 2018 to 01 FEB 2018

04 JAN 2018 to 01 FEB 2018

# TAKEOFF MINIMUMS, (OBSTACLE) DEPARTURE PROCEDURES, AND DIVERSE VECTOR AREA (RADAR VECTORS)

17285

## WARSAW, IN

### WARSAW MUNI (ASW)

#### TAKEOFF MINIMUMS AND (OBSTACLE) DEPARTURE PROCEDURES

AMDT 2 10266 (FAA)

TAKEOFF MINIMUMS: **Rwy 9**, 300-1¼ or std. w/min. climb of 242' per NM to 1100, or alternatively, with standard takeoff minimums and a normal 200' per NM climb gradient, takeoff must occur no later than 2000' prior to DER.

TAKEOFF OBSTACLE NOTES: **Rwy 9**, multiple trees beginning 1369' from DER, 176' left of centerline, up to 68' AGL/908' MSL. Vehicles on road, 185' from DER, 264' left of centerline, 15' AGL/866' MSL. Obstruction light on tower, 5640' from DER, 105' left of centerline, 171' AGL/1020' MSL. Vehicles on road, 182' from DER, 22' right of centerline, 15' AGL/865' MSL. **Rwy 18**, tree 1276' from DER, 298' right of centerline, 65' AGL/905' MSL. **Rwy 27**, tree 1127' from DER, 521' right of centerline, 37' AGL/877' MSL. **Rwy 36**, vehicles on road 505' from DER, on centerline, 15' AGL/864' MSL. Trees beginning 1768' from DER, 32' left of centerline, up to 100' AGL/929' MSL. Tree 1666' from DER, 569' right of centerline, 100' AGL/929' MSL.

## WASHINGTON, IN

### DAVISS COUNTY (DCY)

#### TAKEOFF MINIMUMS AND (OBSTACLE) DEPARTURE PROCEDURES

ORIG 84045 (FAA)

TAKEOFF MINIMUMS: **Rwy 18**, 300-1.

## WASHINGTON COURT HOUSE, OH

### FAYETTE COUNTY (I23)

#### TAKEOFF MINIMUMS AND (OBSTACLE) DEPARTURE PROCEDURES

AMDT 2 07354 (FAA)

TAKEOFF MINIMUMS: **Rwy 5**, 300-1¼ or std. w/min. climb of 268' per NM to 1400.

TAKEOFF OBSTACLE NOTES: **Rwy 5**, train on railroad tracks 384' from DER, 243' right of centerline, 23' AGL/997' MSL. Terrain 81' from DER, 184' left of centerline, 0' AGL/978' MSL. Silo 8848' from DER, 772' right of centerline, 238' AGL/1213' MSL. **Rwy 23**, train on railroad tracks 509' from DER, 257' left of centerline, 23' AGL/1003' MSL.

## WAUSEON, OH

### FULTON COUNTY (USE)

#### TAKEOFF MINIMUMS AND (OBSTACLE) DEPARTURE PROCEDURES

AMDT 1A 17229 (FAA)

TAKEOFF MINIMUMS: **Rwys 18, 36**, NA - Environmental. TAKEOFF OBSTACLE NOTES: **Rwy 9**, antenna, building beginning 1137' from DER, 637' left of centerline, up to 808' MSL. Trees beginning 1309' from DER, 414' right of centerline, up to 840' MSL. Trees beginning 1371' from DER, 562' right of centerline, up to 80' AGL/848' MSL. Tree 1455' from DER, 543' right of centerline, 83' AGL/850' MSL. Trees beginning 1569' from DER, 635' right of centerline, up to 90' AGL/854' MSL. Trees beginning 2161' from DER, 4' left of centerline, up to 111' AGL/876' MSL. **Rwy 27**, building 11' from DER, 460' left of centerline, 799' MSL. Pole 26' from DER, 487' left of centerline, 808' MSL. Antenna, building, road, tree, flagpole, tk, pole beginning 88' from DER, 47' left of centerline, up to 45' AGL/824' MSL. Trees beginning 3976' from DER, 170' left of centerline, up to 889' MSL.

## WAVERLY, OH

### PIKE COUNTY (EOP)

#### TAKEOFF MINIMUMS AND (OBSTACLE) DEPARTURE PROCEDURES

AMDT 1 15036 (FAA)

TAKEOFF OBSTACLE NOTES: **Rwy 7**, REILs 39' from DER, 78' left and 75' right of centerline, 2' AGL/663' MSL. Fence at DER, 434' right of centerline, 6' AGL/668' MSL. Fence beginning 88' from DER, 462' left of centerline, 9' AGL/671' MSL. Buildings beginning 602' from DER, 437' right of centerline, up to 21' AGL/680' MSL. Trees beginning 237' from DER, 162' left of centerline, up to 100' AGL/752' MSL. Trees beginning 95' from DER, 286' right of centerline, up to 100' AGL/736' MSL. **Rwy 25**, REILs 40' from DER, 79' left and 78' right of centerline, 2' AGL/662' MSL. Antenna, poles, and vehicle on road beginning 55' from DER, 223' left of centerline, up to 46' AGL/705' MSL. Trees, poles, fence, and vehicle on road beginning 79' from DER, 200' right of centerline, up to 100' AGL/739' MSL. Vehicles on road beginning 487' from DER, crossing centerline, up to 15' AGL/674' MSL. Trees beginning 666' from DER, 444' right of centerline, up to 100' AGL/726' MSL. Trees beginning 596' from DER, 267' left of centerline, up to 100' AGL/728' MSL. Trees beginning 1422' from DER, crossing centerline, up to 115' AGL/769' MSL.

## WEST UNION, OH

### ALEXANDER SALAMON (AMT)

#### TAKEOFF MINIMUMS AND (OBSTACLE) DEPARTURE PROCEDURES

AMDT 1 90347 (FAA)

TAKEOFF MINIMUMS: **Rwys 5, 23**, 300-1.DEPARTURE PROCEDURE: **Rwys 5, 23**, climb straight ahead to 1700 before turning west.

# TAKEOFF MINIMUMS, (OBSTACLE) DEPARTURE PROCEDURES, AND DIVERSE VECTOR AREA (RADAR VECTORS)

17285

EC-2

04 JAN 2018 to 01 FEB 2018

04 JAN 2018 to 01 FEB 2018

# TAKEOFF MINIMUMS, (OBSTACLE) DEPARTURE PROCEDURES, AND DIVERSE VECTOR AREA (RADAR VECTORS)

17285

## WILLARD, OH

WILLARD (8G1)

TAKEOFF MINIMUMS AND (OBSTACLE)

DEPARTURE PROCEDURES

AMDT 1 81134 (FAA)

TAKEOFF MINIMUMS: **Rwys 10, 28**, 300-1.DEPARTURE PROCEDURE: **Rwys 10, 28**, climb  
runway heading to 1500 before proceeding on course.

## WILLOUGHBY, OH

WILLOUGHBY LOST NATION MUNI (LNN)

TAKEOFF MINIMUMS AND (OBSTACLE)

DEPARTURE PROCEDURES

AMDT 3 10322 (FAA)

DEPARTURE PROCEDURE: **Rwy 10**, climb heading  
099° to 1600 before turning right. **Rwy 23**, climb  
heading 233° to 1400 before turning right. **Rwy 28**,  
climb heading 279° to 1400 before turning left.TAKEOFF OBSTACLE NOTES: **Rwy 5**, trees beginning  
47' from DER, 93' right of centerline, up to 109'  
AGL/726' MSL. Fence 530' from DER, 244' right of  
centerline, 16' AGL/633' MSL. Trees beginning 1079'  
from DER, 150' left of centerline, up to 120' AGL/737'  
MSL. Pole 2129' from DER, 428' right of centerline, 56'  
AGL/677' MSL.**Rwy 10**, trees and poles beginning 602' from DER,  
63' right of centerline, up to 109' AGL/730' MSL. Trees  
and poles beginning 608' from DER, 67' left of  
centerline, up to 117' AGL/731' MSL. **Rwy 23**, light on  
hangar 201' from DER, 534' right of centerline, 32'  
AGL/672' MSL. Trees, poles and buildings beginning  
294' from DER, 87' right of centerline, up to 85'  
AGL/722' MSL. Trees beginning 1660' from DER, 164'  
left of centerline, up to 77' AGL/714' MSL. **Rwy 28**,  
light on hangar 877' from DER, 539' left of centerline,  
32' AGL/672' MSL. Building 881' from DER, 665' left of  
centerline, 32' AGL/672' MSL. Pole 988' from DER,  
533' right of centerline, 31' AGL/661' MSL. Building  
1101' from DER, 337' right of centerline, 35' AGL/661'  
MSL. Trees beginning 1177' from DER, 395' right of  
centerline, up to 75' AGL/705' MSL. Trees beginning  
1179' from DER, 200' left of centerline, up to 80'  
AGL/717' MSL.

## WILMINGTON, OH

WILMINGTON AIR PARK (ILN)

TAKEOFF MINIMUMS AND (OBSTACLE)

DEPARTURE PROCEDURES

ORIG 09239 (FAA)

TAKEOFF OBSTACLE NOTES: **Rwy 4L**, tree 1032' from  
DER, 644' right of centerline, 35' AGL/1114' MSL. **Rwy**  
**22L**, tree 2437' from DER, 468' left of centerline, 100'  
AGL/1134' MSL.

CLINTON FIELD (I66)

TAKEOFF MINIMUMS AND (OBSTACLE)

DEPARTURE PROCEDURES

AMDT 2 07186 (FAA)

TAKEOFF MINIMUMS: **Rwy 3**, 300-1¼ or std. w/ a min.  
climb of 224' per NM to 1300', or alternatively, w/ std.  
takeoff minimums and a normal 200'/NM climb gradient,  
takeoff must occur no later than 1700' prior to DER.TAKEOFF OBSTACLE NOTES: **Rwy 3**, multiple trees  
beginning 76' from DER, 76' right of centerline, up to 88'  
AGL/1137' MSL. Multiple trees beginning 279' from  
DER, 140' left of centerline, up to 96' AGL/1105' MSL.  
Water tank 1 NM from DER, 554' left of centerline, 176'  
AGL/1205' MSL. **Rwy 21**, multiple trees beginning 187'  
from DER, 509' right of centerline, up to 87' AGL/1111'  
MSL. Multiple trees beginning 243' from DER, 214' left of  
centerline, up to 77' AGL/1086' MSL.

## WINAMAC, IN

ARENS FIELD (RWN)

TAKEOFF MINIMUMS AND (OBSTACLE)

DEPARTURE PROCEDURES

ORIG 11293 (FAA)

TAKEOFF MINIMUMS: **Rwy 9**, 300-1½ or std. w/min.  
climb of 225' per NM to 1000, or alternatively, with  
standard takeoff minimums and a normal 200' per NM  
climb gradient, takeoff must occur no later than 1700'  
prior to DERTAKEOFF OBSTACLE NOTES: **Rwy 9**, hangar 6' from  
DER, 409' left of centerline, 25' AGL/731' MSL. Tower  
1.1 NM from DER, 117' left of centerline, 182' AGL/895'  
MSL.

## WINCHESTER, IN

RANDOLPH COUNTY (I22)

TAKEOFF MINIMUMS AND (OBSTACLE)

DEPARTURE PROCEDURES

ORIG 11069 (FAA)

TAKEOFF OBSTACLE NOTES: **Rwy 8**, power poles  
beginning 503' from DER, 433' right of centerline, up to  
26' AGL/1155' MSL. Trees 1013' from DER, 586' right of  
centerline, 38' AGL/1167' MSL. Trees beginning 3523'  
from DER, 112' right of centerline, up to 101' AGL/1220'  
MSL. Tree 1745' from DER, 718' left of centerline, 61'  
AGL/1180' MSL. **Rwy 26**, trees and power pole  
beginning 389' from DER, 461' right of centerline, up to  
59' AGL/1178' MSL. Barn and silo beginning 590' from  
DER, 360' right of centerline, up to 32' AGL/1151' MSL.  
Tree 479' from DER, 571' left of centerline, 23' AGL/  
1142' MSL. Power poles, antenna, and barn beginning  
913' from DER, 444' left of centerline, up to 34' AGL/  
1153' MSL. Tree and antenna beginning 1023' from  
DER, 424' left of centerline, up to 43' AGL/1162' MSL.

04 JAN 2018 to 01 FEB 2018

04 JAN 2018 to 01 FEB 2018

# TAKEOFF MINIMUMS, (OBSTACLE) DEPARTURE PROCEDURES, AND DIVERSE VECTOR AREA (RADAR VECTORS)

17285

EC-2


**TAKEOFF MINIMUMS, (OBSTACLE) DEPARTURE PROCEDURES, AND**

  
**DIVERSE VECTOR AREA (RADAR VECTORS)**

17285

**WOODSFIELD, OH**

MONROE COUNTY (4G5)  
 TAKEOFF MINIMUMS AND (OBSTACLE)  
 DEPARTURE PROCEDURES  
 AMDT 2 91150 (FAA)  
 TAKEOFF MINIMUMS: **Rwy 25**, 300-1.

**WOOSTER, OH**

WAYNE COUNTY (BJJ)  
 TAKEOFF MINIMUMS AND (OBSTACLE)  
 DEPARTURE PROCEDURES  
 AMDT 1 98169 (FAA)  
 TAKEOFF MINIMUMS: **Rwy 28**, 300-1.

**WRIGHT-PATTERSON AFB (KFFO)**

DAYTON, OH  
 TAKEOFF MINIMUMS AND (OBSTACLE)  
 DEPARTURE PROCEDURES  
 09295

**Rwy 5R, 200-1½\*****Rwy 23R, 400-2¾\*\*****Rwy 23L, 400-2¾\*\*\***

\* Or standard with minimum climb of 240ft/NM to 1100'.

\*\* Or standard with minimum climb of 260ft/NM to 1300'.

\*\*\* Or standard with minimum climb of 210ft/NM to 1300'.

**Rwy 5R**, Climb on track 050° until reaching 1100'.  
 TAKEOFF OBSTACLE NOTES: **Rwy 23L**: 43' AGL  
 VORTAC, 850' from DER, 662' right of centerline.

**Rwy 5L**: Up to 105' AGL tree line beginning 3000'  
 from DER, 700' right of centerline to 5100' from  
 DER, 1300' left of centerline.

**YOUNGSTOWN, OH**

YOUNGSTOWN ELSER METRO (4G4)  
 TAKEOFF MINIMUMS AND (OBSTACLE)  
 DEPARTURE PROCEDURES  
 AMDT 1A 15036 (FAA)

TAKEOFF MINIMUMS: **Rwy 10**, 300-1¾ or std. w/ min.  
 climb of 237' per NM to 1500. **Rwy 28**, 300-2½ or std.  
 w/min. climb of 463' per NM to 1300.

DEPARTURE PROCEDURE: **Rwy 10**, climb heading  
 098° to 2000 before proceeding on course. **Rwy 28**,  
 climb heading 278° to 1700 before turning right.

TAKEOFF OBSTACLE NOTES: **Rwy 10**, vehicle on  
 road 200' from DER, on centerline, 15' AGL/1104'  
 MSL. Hangar and trees beginning 34' from DER, 203'  
 right of centerline, up to 100' AGL/1189' MSL. Trees  
 and tower beginning 283' from DER, 322' left of  
 centerline, up to 138' AGL/1332' MSL. **Rwy 28**, trees  
 on centerline, beginning 3380' from DER, up to 100'  
 AGL/1209' MSL. Trees beginning at DER, 222' right of  
 centerline, up to 100' AGL/1119' MSL. Trees beginning  
 at DER, 191' left of centerline, up to 100' AGL/1119'  
 MSL.

**YOUNGSTOWN-WARREN, OH**

YOUNGSTOWN-WARREN RGNL (YNG)  
 TAKEOFF MINIMUMS AND (OBSTACLE)  
 DEPARTURE PROCEDURES  
 AMDT 4 90207 (FAA)  
 TAKEOFF MINIMUMS: **Rwy 23**, 300-1.

**ZANESVILLE, OH**

ZANESVILLE MUNI (ZZV)  
 TAKEOFF MINIMUMS AND (OBSTACLE)  
 DEPARTURE PROCEDURES  
 ORIG 03359 (FAA)  
 TAKEOFF OBSTACLE NOTES: **Rwy 22**, tree 303' from  
 DER, 427' left of centerline, 948' MSL. Tree 182' from  
 DER, 350' right of centerline, 942' MSL. **Rwy 34**, tree  
 2370' from DER, 189' left of centerline, 968' MSL. Tree  
 2309' from DER, 388' left of centerline, 962' MSL.

04 JAN 2018 to 01 FEB 2018

04 JAN 2018 to 01 FEB 2018


**TAKEOFF MINIMUMS, (OBSTACLE) DEPARTURE PROCEDURES, AND**

  
**DIVERSE VECTOR AREA (RADAR VECTORS)**

17285

EC-2