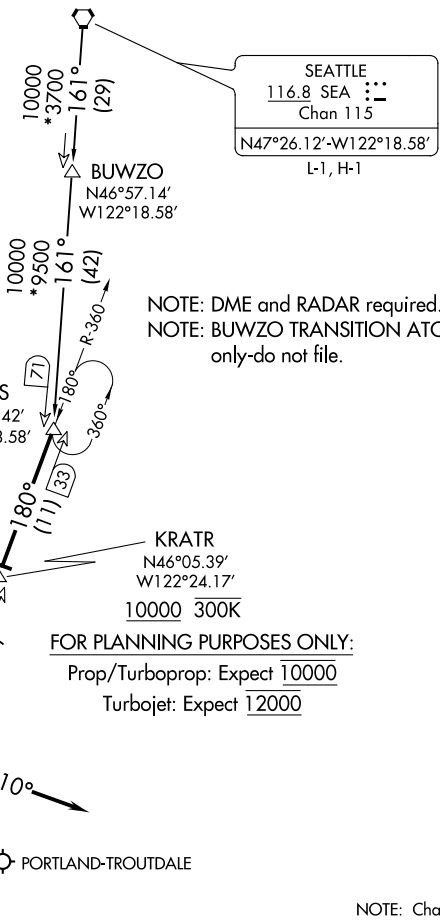


(HELNS.HELNS6) 20198
HELNS SIX ARRIVAL

AL-330 (FAA)

PORTLAND, OREGON

PORTLAND APP CON
 124.35 299.2
 HIO ATIS
 127.65
 PDX D-ATIS
 128.35 269.9



SEATTLE
 116.8 SEA
 Chan 115
 N47°26.12'-W122°18.58'
 L-1, H-1

NOTE: DME and RADAR required.
 NOTE: BUWZO TRANSITION ATC assigned
 only-do not file.

BATTLE GROUND
 116.6 BTG
 Chan 113
 N45°44.87'-W122°35.49'

KRATR
 N46°05.39'
 W122°24.17'
 10000 300K

FOR PLANNING PURPOSES ONLY:
 Prop/Turboprop: Expect 10000
 Turbojet: Expect 12000

Ldg all airports

PORTLAND-HILLSBORO
 PORTLAND INTL
 PORTLAND-TROUTDALE
 AURORA STATE

NOTE: Chart not to scale.

ARRIVAL ROUTE DESCRIPTION

BUWZO TRANSITION (BUWZO.HELNS6): From over BUWZO via SEA R-161 to HELNS. Thence. . . .

SEATTLE TRANSITION (SEA.HELNS6): From over SEA VORTAC via SEA R-161 to HELNS. Thence. . . .

. . . . from over HELNS on BTG VORTAC R-360 to cross KRATR at or above 10000, then as depicted to cross BTG VORTAC at or above 7000.

LANDING EAST: From BTG VORTAC heading 280°, expect RADAR vectors to final approach course.

LANDING WEST: From BTG VORTAC heading 110°, expect RADAR vectors to final approach course.

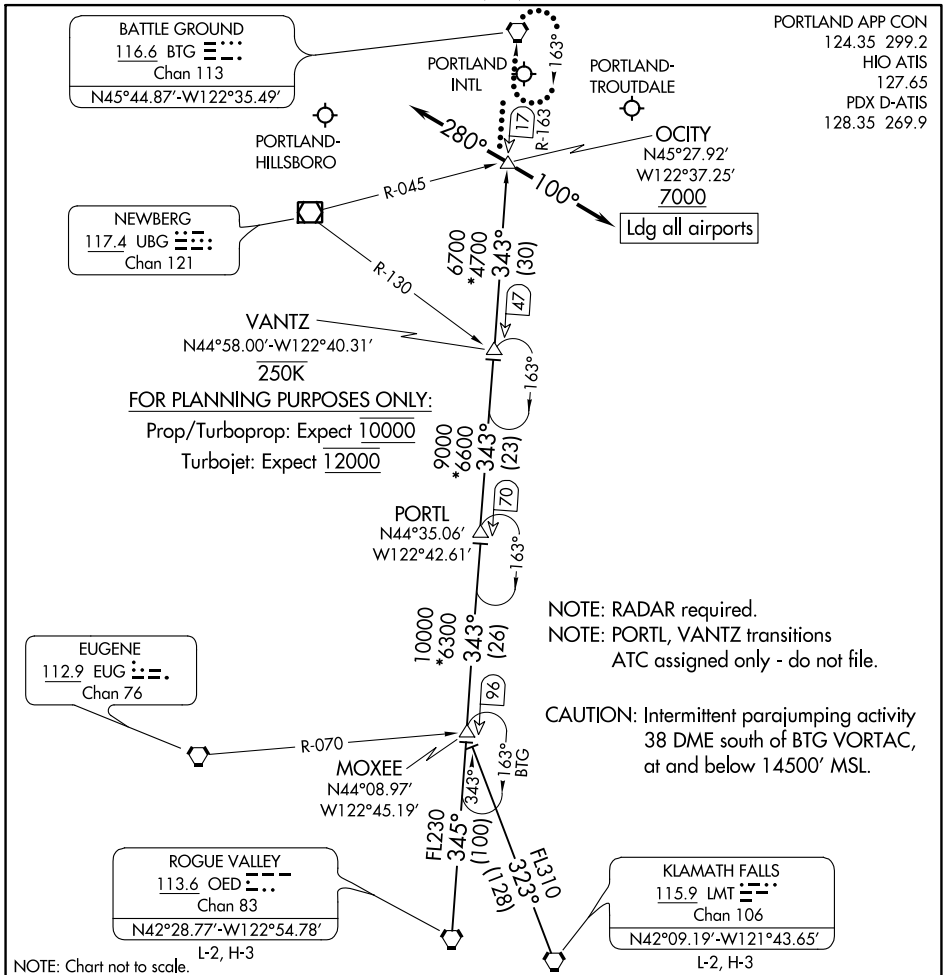
HELNS SIX ARRIVAL
 (HELNS.HELNS6) 29MAR18

PORTLAND, OREGON

NW-1, 04 NOV 2021 to 02 DEC 2021

NW-1, 04 NOV 2021 to 02 DEC 2021

OCITY THREE ARRIVAL



NW-1, 04 NOV 2021 to 02 DEC 2021

NW-1, 04 NOV 2021 to 02 DEC 2021

ARRIVAL ROUTE DESCRIPTION

- KLAMATH FALLS TRANSITION (LMT.OCITY3):** From over LMT VORTAC on LMT R-323 to MOXEE, then on BTG R-163 to OCITY. Thence. . .
- MOXEE TRANSITION (MOXEE.OCITY3):** From over MOXEE on BTG R-163 to OCITY. Thence. . .
- ROGUE VALLEY TRANSITION (OED.OCITY3):** From over OED VORTAC on OED R-345 to MOXEE, then on BTG R-163 to OCITY. Thence. . .
- PORTL TRANSITION (PORTL.OCITY3):** From over PORTL on BTG R -163 to OCITY. Thence. . .
- VANTZ TRANSITION (VANTZ.OCITY3):** From over VANTZ on BTG R-163 to OCITY. Thence. . .
- LANDING EAST:** From OCITY heading 280°, expect RADAR vectors to final approach course.
- LANDING WEST:** From OCITY heading 100°, expect RADAR vectors to final approach course.
- LOST COMMUNICATIONS:** After OCITY, proceed direct BTG VORTAC and hold.

OCITY THREE ARRIVAL