

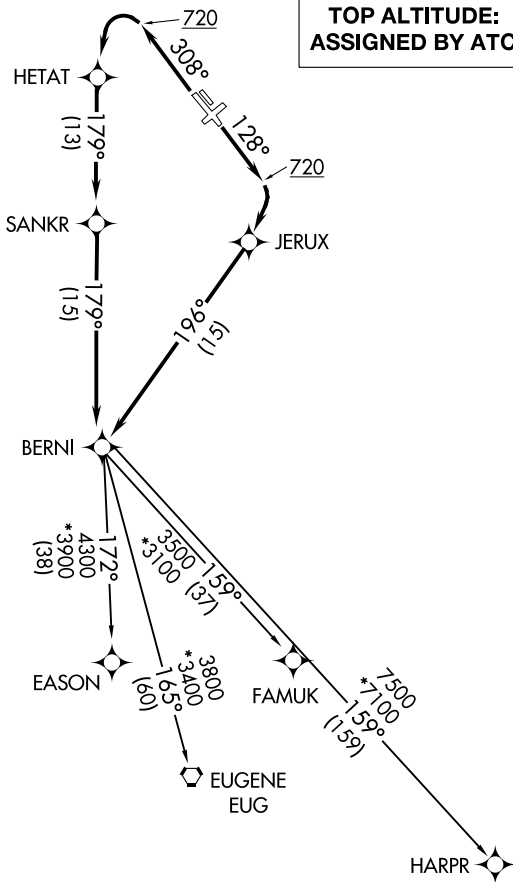
(BERNI3.BERNI) 18032

BERNI THREE DEPARTURE (RNAV) AL-5063 (FAA)

PORTLAND-HILLSBORO (HIO)
PORTLAND, OREGON

ATIS
127.65
GND CON
121.7
HILLSBORO TOWER *
119.3 (CTAF) 239.3
PORTLAND DEP CON
126.0 269.175

**TOP ALTITUDE:
ASSIGNED BY ATC**



NOTE: GPS required.
NOTE: RNAV 1.
NOTE: RADAR required.
NOTE: Turbojet aircraft only.

TAKEOFF MINIMUMS

Rwys 2, 13L, 20, 31R: NA-ATC.
Rwys 13R, 31L: Standard with minimum
climb of 500' per NM
to 720.

NOTE: Chart not to scale.

NW-1, 21 MAY 2020 to 18 JUN 2020

NW-1, 21 MAY 2020 to 18 JUN 2020

DEPARTURE ROUTE DESCRIPTION

TAKEOFF RUNWAY 13R: Climb heading 128° to 720, then climbing right turn direct JERUX, then on track 196° to BERNI, thence . . .

TAKEOFF RUNWAY 31L: Climb heading 308° to 720, then climbing left turn direct HETAT, then on track 179° to SANKR, then on track 179° to BERNI, thence . . .

. . . on (transition). Maintain assigned altitude. Expect filed altitude 10 minutes after departure.

EASON TRANSITION (BERNI3.EASON)

EUGENE TRANSITION (BERNI3.EUG)

FAMUK TRANSITION (BERNI3.FAMUK)

HARPR TRANSITION (BERNI3.HARPR)

BERNI THREE DEPARTURE (RNAV)

(BERNI3.BERNI) 01FEB18

PORTLAND, OREGON
PORTLAND-HILLSBORO (HIO)

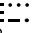
(CANBY2.CANBY) 18032

CANBY TWO DEPARTURE

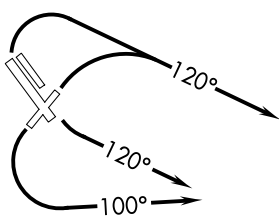
AL-5063 (FAA)

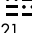
PORTLAND-HILLSBORO (HIO)
PORTLAND, OREGON

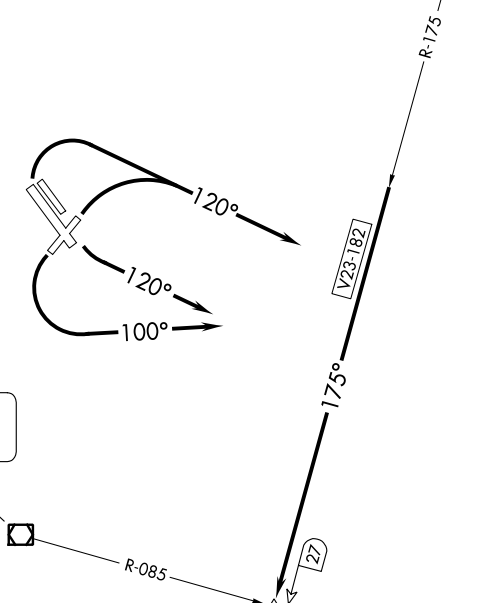
ATIS
127.65
GND CON
121.7
HILLSBORO TOWER ★
119.3 (CTAF) 239.3
PORTLAND DEP CON
126.0 269.175

BATTLEGROUND
116.6 BTG 
Chan 113

**TOP ALTITUDE:
ASSIGNED BY ATC**



NEWBERG
117.4 UBG 
Chan 121



CANBY
N45°18.63'
W122°45.89'
L-1

NW-1, 21 MAY 2020 to 18 JUN 2020

NW-1, 21 MAY 2020 to 18 JUN 2020

TAKEOFF MINIMUMS

- Rwys 2: Standard with minimum climb of 305' per NM to 2700.
- Rwys 13L/R: Standard with minimum climb of 235' per NM to 1500.
- Rwy 20: Standard.
- Rwys 31L/R: Standard with minimum climb of 280' per NM to 2700.

NOTE: Chart not to scale.



DEPARTURE ROUTE DESCRIPTION

TAKEOFF RUNWAYS 2, 31L/R: Climbing right turn heading 120°, thence. . . .

TAKEOFF RUNWAYS 13L/R: Climbing left turn heading 120°, thence. . . .

TAKEOFF RUNWAY 20: Climbing left turn heading 100°, thence. . . .

. . . .intercept BTG VORTAC R-175 to CANBY. Then on assigned route.

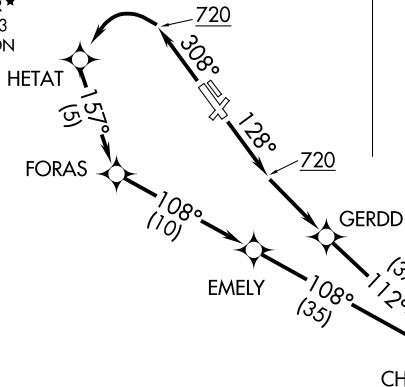
Maintain ATC assigned altitude.

CANBY TWO DEPARTURE
(CANBY2.CANBY) 01FEB18

PORTLAND, OREGON
PORTLAND-HILLSBORO (HIO)

CHISM FOUR DEPARTURE (RNAV)
(CHISM4.CHISM) 01 FEB 18

ATIS
127.65
GND CON
121.7
HILLSBORO TOWER *
119.3 (CTAF) 239.3
PORTLAND DEP CON
126.0 269.175



DEPARTURE ROUTE DESCRIPTION

TAKEOFF RUNWAY 13R: Climb heading 128° to 720, then climbing left turn direct GERDD, then on depicted route to CHISM, thence
TAKEOFF RUNWAY 31L: Climb heading 308° to 720, then climbing left turn direct HETAT, then on depicted route to CHISM, thence
. . . . on (Transition). Maintain assigned altitude. Expect filed altitude 10 minutes after departure.

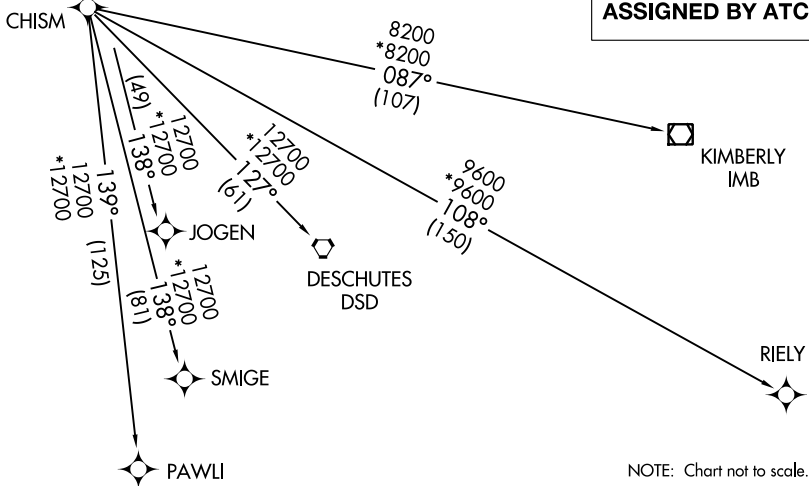
- DESCHUTES TRANSITION (CHISM4.DSD)
- JOGEN TRANSITION (CHISM4.JOGEN)
- KIMBERLY TRANSITION (CHISM4.IMB)
- PAWLI TRANSITION (CHISM4.PAWLI)
- RIELY TRANSITION (CHISM4.RIELY)
- SMIGE TRANSITION (CHISM4.SMIGE)

**TOP ALTITUDE:
ASSIGNED BY ATC**

NOTE: GPS required.
NOTE: RNAV 1.
NOTE: RADAR required.
NOTE: Turbojet aircraft only.

TAKEOFF MINIMUMS

Rwys 2, 13L, 20, 31R: NA - ATC.
Rwys 13R, 31L: Standard with minimum climb of 500' per NM to 720.



NOTE: Chart not to scale.

PORTLAND, OREGON
PORTLAND-HILLSBORO (H10)

(CHISM4.CHISM) 18032
CHISM FOUR DEPARTURE (RNAV)

AL-5063 (FAA)

PORTLAND-HILLSBORO (H10)
PORTLAND, OREGON

(FARM7.UBG) 18032

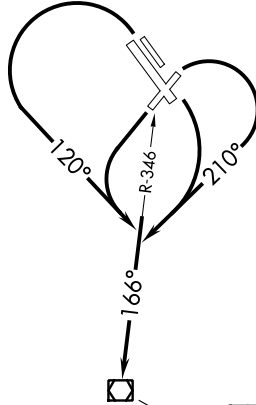
FARMINGTON SEVEN DEPARTURE

AL-5063 (FAA)

PORTLAND-HILLSBORO (HIO)
PORTLAND, OREGON

ATIS
127.65
GND CON
121.7
HILLSBORO TOWER *
119.3 (CTAF) 239.3
PORTLAND DEP CON
126.0 269.175

**TOP ALTITUDE:
ASSIGNED BY ATC**



NEWBERG	
117.4 UBG	
Chan 121	
N45°21.19' W122°58.69'	
L-1, H-1	

TAKEOFF MINIMUMS

- Rwy 2: Standard with minimum climb of 305' per NM to 2700.
- Rwys 13L/R: Standard with minimum climb of 235' per NM to 1500.
- Rwy 20: Standard.
- Rwys 31L/R: Standard with minimum climb of 240' per NM to 600.

NOTE: Chart not to scale.



DEPARTURE ROUTE DESCRIPTION

TAKEOFF RUNWAYS 2, 13L/R: Climbing right turn heading 210°, thence

TAKEOFF RUNWAYS 20, 31L/R: Climbing left turn heading 120°, thence

. . . . intercept UBG VOR/DME R-346 to UBG VOR/DME. Thence on assigned route.

Maintain ATC assigned altitude.

FARMINGTON SEVEN DEPARTURE

(FARM7.UBG) 01FEB18

PORTLAND, OREGON
PORTLAND-HILLSBORO (HIO)

NW-1, 21 MAY 2020 to 18 JUN 2020

NW-1, 21 MAY 2020 to 18 JUN 2020

(SCAPO7.SCAPO) 18032

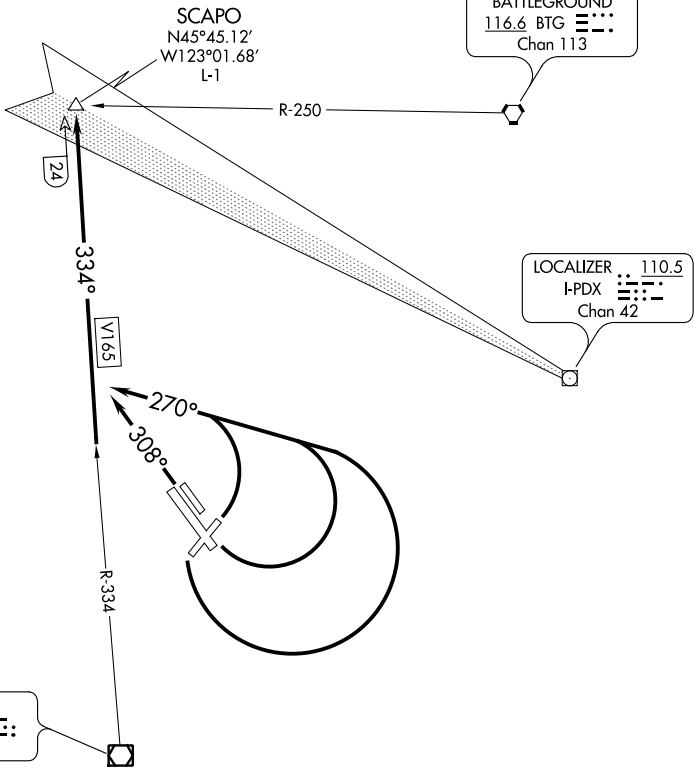
SCAPO SEVEN DEPARTURE

AL-5063 (FAA)

PORTLAND-HILLSBORO (HIO)
PORTLAND, OREGON

ATIS
127.65
GND CON
121.7
HILLSBORO TOWER *
119.3 (CTAF) 239.3
PORTLAND DEP CON
126.0 269.175

**TOP ALTITUDE:
ASSIGNED BY ATC**



TAKEOFF MINIMUMS

- Rwy 2: Standard with minimum climb of 235' per NM to 2000.
- Rwys 13L/R: Standard with minimum climb of 305' per NM to 2700.
- Rwy 20: Standard.
- Rwys 31L/R: Standard with minimum climb of 240' per NM to 600.

NOTE: Chart not to scale.



DEPARTURE ROUTE DESCRIPTION

TAKEOFF RUNWAYS 2, 13L/R, 20: Climbing left turn heading 270°, thence

TAKEOFF RUNWAYS 31L/R: Climb heading 308°, thence

. . . . intercept UBG VOR/DME R-334 to SCAPO. Then on assigned route.
Maintain ATC assigned altitude.

SCAPO SEVEN DEPARTURE

(SCAPO7.SCAPO) 01FEB18

PORTLAND, OREGON
PORTLAND-HILLSBORO (HIO)

NW-1, 21 MAY 2020 to 18 JUN 2020

NW-1, 21 MAY 2020 to 18 JUN 2020