

WAAS CH <b>77622</b> <b>W15A</b>	APP CRS <b>148°</b>	Rwy ldg TDZE Apt Elev	<b>4000</b> <b>1061</b> <b>1062</b>
--	------------------------	-----------------------------	---

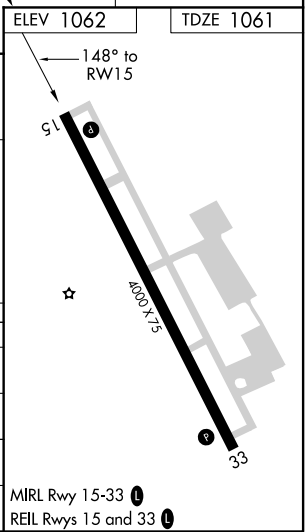
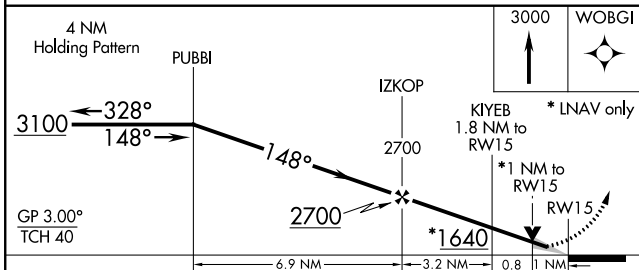
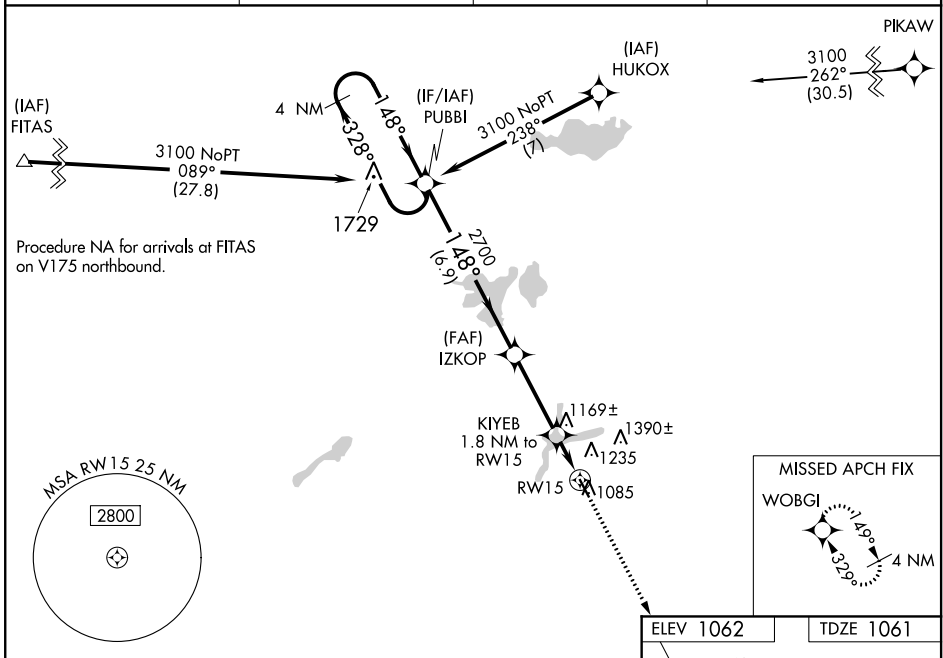
# RNAV (GPS) RWY 15

HUTCHINSON MUNI-BUTLER FIELD (HCD)

**⚠** Baro-VNAV NA when using Glencoe altimeter setting. For uncompensated Baro-VNAV systems, LNAV/VNAV NA below -17°C (2°F) or above 34°C (130°F). DME/DME RNP-0.3 NA. VDP NA with Glencoe altimeter setting. When local altimeter setting not received, use Glencoe altimeter setting and increase all DA 43 feet and LPV and LNAV/VNAV all Cats visibility 1/8 mile; increase all MDA 60 feet and LNAV Cat C visibility 1/4 mile.

**MISSED APPROACH:** Climb to 3000 direct WOBGI and hold.

AWOS-3 <b>118.525</b>	MINNEAPOLIS CENTER <b>127.1 290.2</b>	GCO <b>121.725</b>	UNICOM <b>122.8 (CTAF)</b> <b>0</b>
--------------------------	--	-----------------------	--



CATEGORY	A	B	C	D
LPV DA	1311-7/8	250 (300-7/8)		NA
LNAV/VNAV DA	1328-7/8	267 (300-7/8)		NA
LNAV MDA	1420-1	359 (400-1)		NA
CIRCLING	1540-1	478 (500-1)	1740-2 678 (700-2)	NA

NC-1, 02 DEC 2021 to 30 DEC 2021

NC-1, 02 DEC 2021 to 30 DEC 2021

WAAS CH <b>86322</b> <b>W33A</b>	APP CRS <b>329°</b>	Rwy Idg TDZE Apt Elev	<b>4000</b> <b>1062</b> <b>1062</b>
--	------------------------	-----------------------------	---

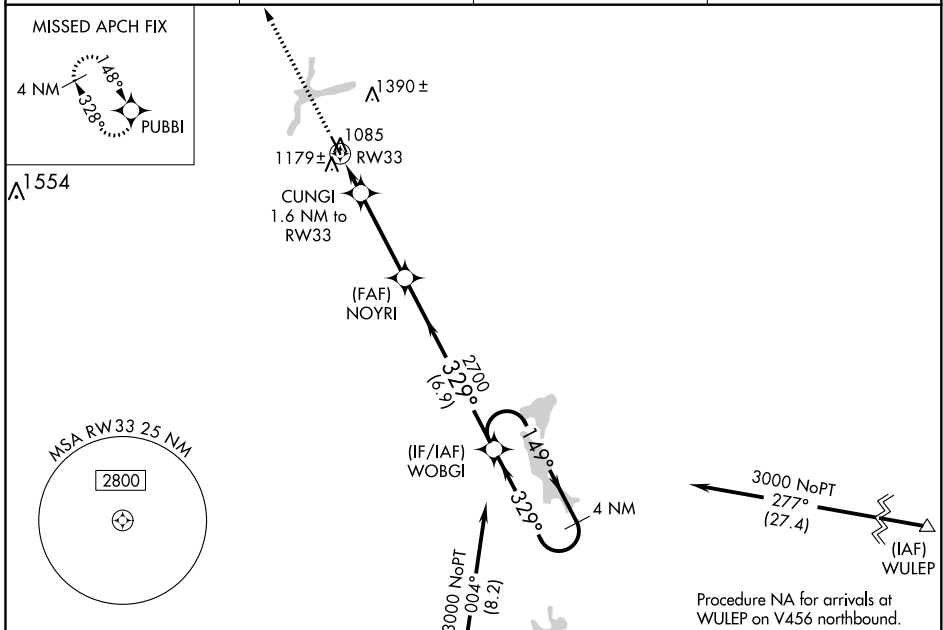
# RNAV (GPS) RWY 33

HUTCHINSON MUNI-BUTLER FIELD (HCD)

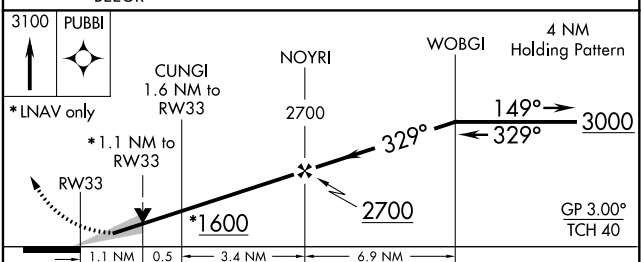
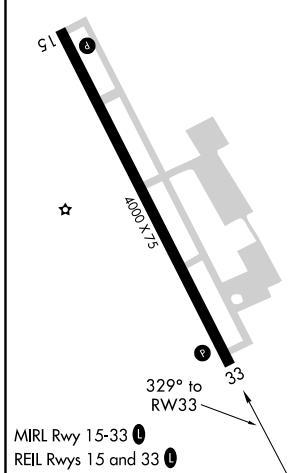
**▽** For uncompensated Baro-VNAV systems, LNAV/VNAV NA below -17°C (2°F) or above 54°C (130°F). DME/DME RNP-0.3 NA.

MISSED APPROACH: Climb to 3100 direct PUBBI and hold.

AWOS-3 <b>118.525</b>	MINNEAPOLIS CENTER <b>127.1 290.2</b>	GCO <b>121.725</b>	UNICOM <b>122.8 (CTAF) 0</b>
--------------------------	--	-----------------------	---------------------------------



ELEV 1062	TDZE 1062
-----------	-----------



CATEGORY	A	B	C	D
LPV DA	1312-1 250 (300-1)			NA
LNAV/VNAV DA	1349-1 287 (300-1)			NA
LNAV MDA	1440-1 378 (400-1)			NA
CIRCLING	1540-1	478 (500-1)	1740-2 678 (700-2)	NA

NC-1, 02 DEC 2021 to 30 DEC 2021

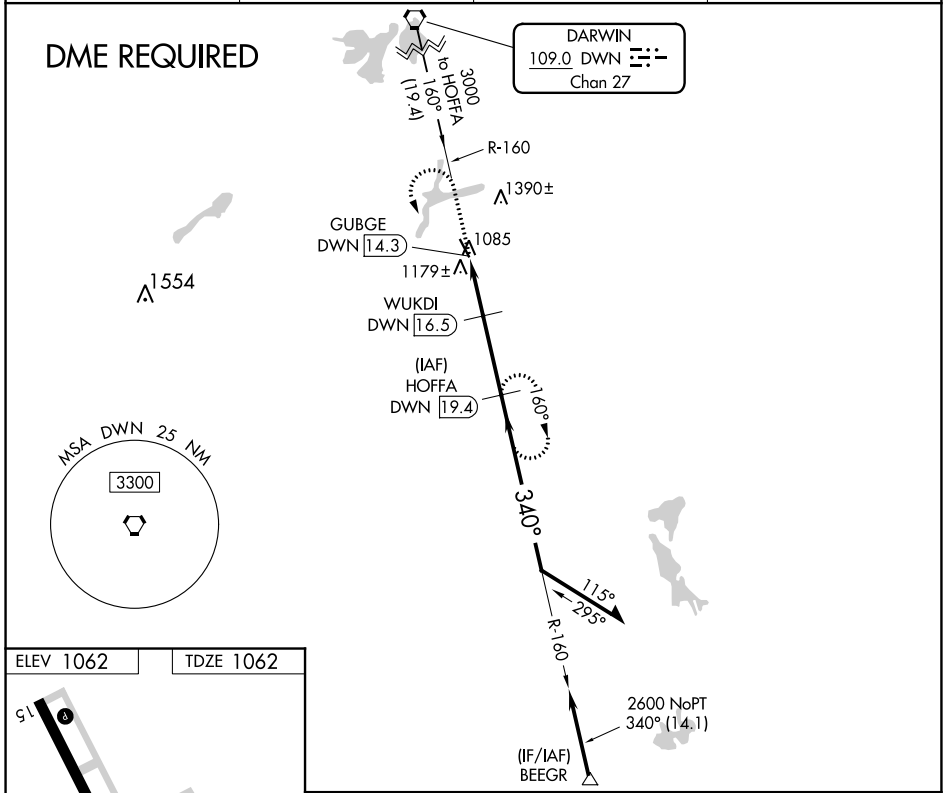
NC-1, 02 DEC 2021 to 30 DEC 2021

VORTAC DWN <b>109.0</b> Chan 27	APP CRS <b>340°</b>	Rwy Idg TDZE Apt Elev	<b>4000</b> <b>1062</b> <b>1062</b>
---------------------------------------	------------------------	-----------------------------	---

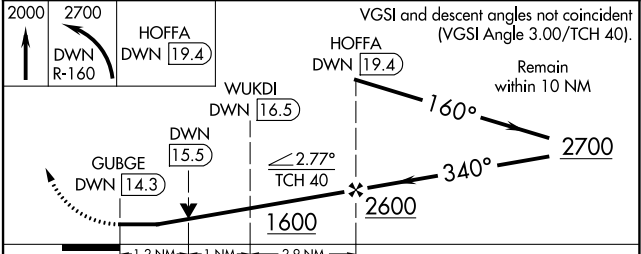
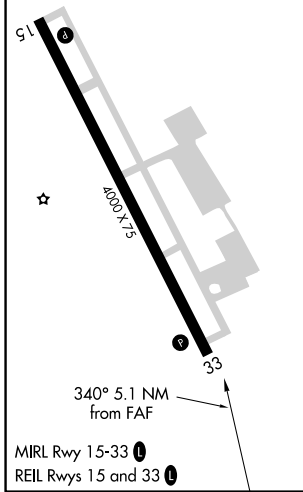
# VOR RWY 33

HUTCHINSON MUNI-BUTLER FIELD (HCD)

<p>▼ DME required.</p>		<p>MISSED APPROACH: Climb to 2000 then climbing left turn to 2700 on DWN VORTAC R-160 to HOFFA/19.4 DME and hold.</p>	
AWOS-3 <b>118.525</b>	MINNEAPOLIS CENTER <b>127.1 290.2</b>	GCO <b>121.725</b>	UNICOM <b>122.8 (CTAF) 0</b>



ELEV 1062	TDZE 1062
-----------	-----------



CATEGORY	A	B	C	D
S-33	1460-1	398 (400-1)	1460-1 1/8 398 (400-1 1/8)	NA
CIRCLING	1540-1	478 (500-1)	1740-2 678 (700-2)	NA

NC-1, 02 DEC 2021 to 30 DEC 2021

NC-1, 02 DEC 2021 to 30 DEC 2021