

|  |                        |                             |   |
|--|------------------------|-----------------------------|---|
| WAAS<br>CH <b>45918</b><br><b>W13A</b> | APP CRS<br><b>128°</b> | Rwy Idg<br>TDZE<br>Apt Elev | <b>5003</b><br><b>661</b><br><b>663</b> |
|--|------------------------|-----------------------------|---|

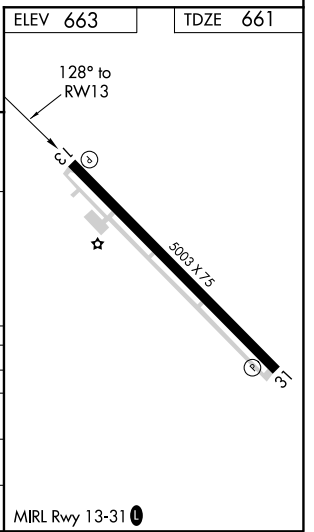
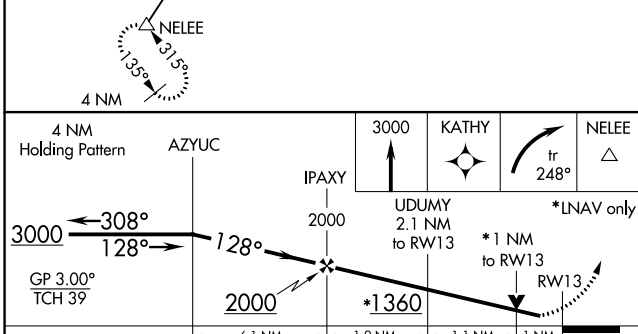
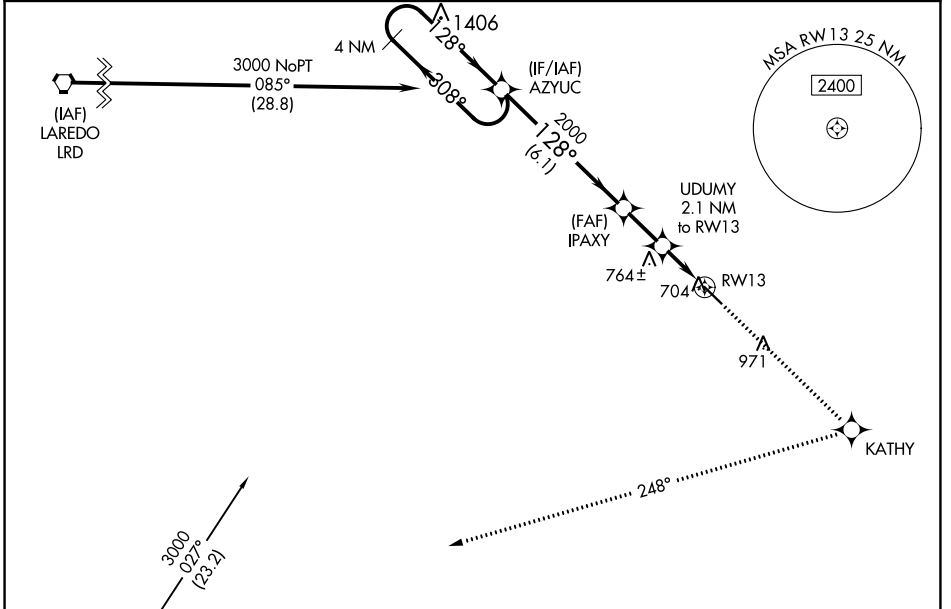
# RNAV (GPS) RWY 13

JIM HOGG COUNTY (HBV)

**⚠** Baro-VNAV NA when using Laredo altimeter setting. For uncompensated Baro-VNAV systems, LNAV/VNAV NA below -16°C (4°F) or above 54°C (130°F). DME/DME RNP-0.3 NA.  
**⚠** Visibility reduction by helicopters NA. When local altimeter setting not received, use Laredo altimeter setting: increase LPV DA to 1026 feet and all visibilities ¼ SM; increase LNAV/VNAV DA to 1089 feet and all visibilities ½ SM; increase all MDAs 120 feet and increase LNAV Cat C and Circling Cat C visibility ¼ SM. VDP NA with Laredo altimeter setting.

**MISSED APPROACH:** Climb to 3000 direct KATHY and right turn on track 248° to NELEE and hold

|                          |                                      |                                 |
|--------------------------|--------------------------------------|---------------------------------|
| AWOS-3<br><b>118.075</b> | HOUSTON CENTER<br><b>127.8 307.2</b> | UNICOM<br><b>122.8 (CTAF) 0</b> |
|--------------------------|--------------------------------------|---------------------------------|



| CATEGORY     | A                     | B                     | C                       | D  |
|--------------|-----------------------|-----------------------|-------------------------|----|
| LPV DA       | 911-1                 | 250 (300-1)           |                         | NA |
| LNAV/VNAV DA | 974-1                 | 313 (400-1)           |                         | NA |
| LNAV MDA     | 1020-1                | 359 (400-1)           |                         | NA |
| CIRCLING     | 1040-1<br>377 (400-1) | 1120-1<br>457 (500-1) | 1280-1¾<br>617 (700-1¾) | NA |

SC-3, 07 OCT 2021 to 04 NOV 2021

SC-3, 07 OCT 2021 to 04 NOV 2021