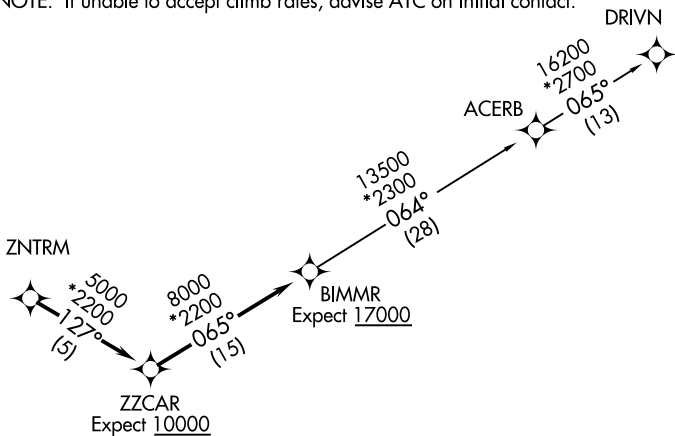


# BIMMR TWO DEPARTURE (RNAV)

**TOP ALTITUDE:  
3000**

AWOS-3  
127.325  
CLNC DEL  
121.4  
GND CON  
121.4  
DONALDSON TOWER ★  
133.325 269.25  
UNICOM  
122.7  
GREER DEP CON ★  
118.8 270.275

- NOTE: Do not exceed 250K until advised by ATC.
- NOTE: For turbojets only.
- NOTE: RNAV 1.
- NOTE: RADAR required.
- NOTE: DME/DME/IRU or GPS required.
- NOTE: If unable to accept climb rates, advise ATC on initial contact.



### TAKEOFF MINIMUMS

Rwy 23: Standard.

Rwy 5: 300-1¾ or standard with minimum climb of 220' per NM to 1300, or alternatively, with standard takeoff minimums and a normal 200' per NM climb gradient, takeoff must occur no later than 1800' prior to DER.

NOTE: Chart not to scale.



### DEPARTURE ROUTE DESCRIPTION

TAKEOFF ALL RUNWAYS: Climb on assigned heading for RADAR vectors to ZNTRM, then on depicted route to BIMMR, thence. . . .

. . . on assigned transition. Maintain 3000. Expect clearance to filed altitude within 10 minutes after departure.

ACERB TRANSITION (BIMMR2.ACERB)

DRIVN TRANSITION (BIMMR2.DRIVN)

# BIMMR TWO DEPARTURE (RNAV)

# BWALL TWO DEPARTURE (RNAV)

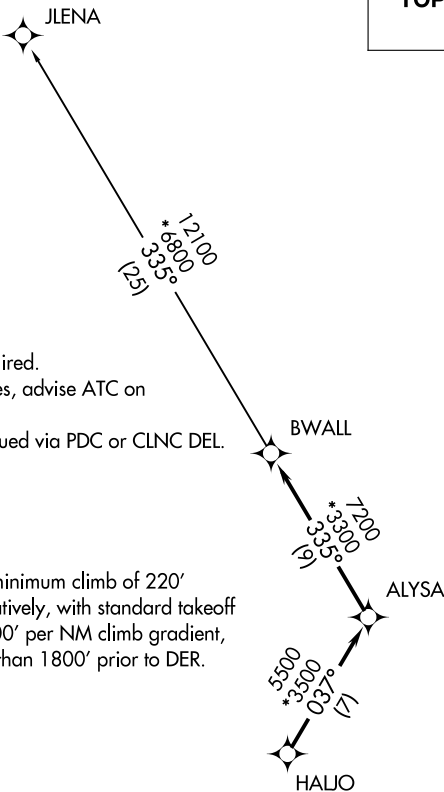
**TOP ALTITUDE:  
3000**

AWOS-3  
127.325  
CLNC DEL  
121.4  
GND CON  
121.4  
DONALDSON TOWER ★  
133.325 269.25  
UNICOM  
122.7  
GREER DEP CON ★  
118.8 270.275

- NOTE: For turbojets only.
- NOTE: RNAV 1.
- NOTE: RADAR required.
- NOTE: DME/DME/IRU or GPS required.
- NOTE: If unable to accept climb rates, advise ATC on initial contact.
- NOTE: Transponder code will be issued via PDC or CLNC DEL.

### TAKEOFF MINIMUMS

- Rwy 23: Standard.
- Rwy 5: 300-1 $\frac{3}{4}$  or standard with minimum climb of 220' per NM to 1300, or alternatively, with standard takeoff minimums and a normal 200' per NM climb gradient, takeoff must occur no later than 1800' prior to DER.



NOTE: Chart not to scale.



### DEPARTURE ROUTE DESCRIPTION

TAKEOFF ALL RUNWAYS: Climb on assigned heading for RADAR vectors to HALJO, then on depicted route to BWALL, thence. . . .

. . . .on JLENA transition. Maintain 3000. Expect clearance to filed altitude within 10 minutes after departure.

JLENA TRANSITION (BWALL2.JLENA)