

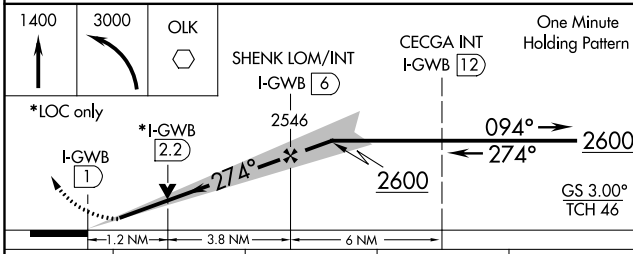
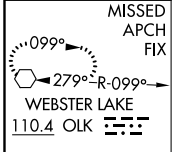
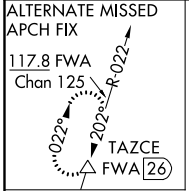
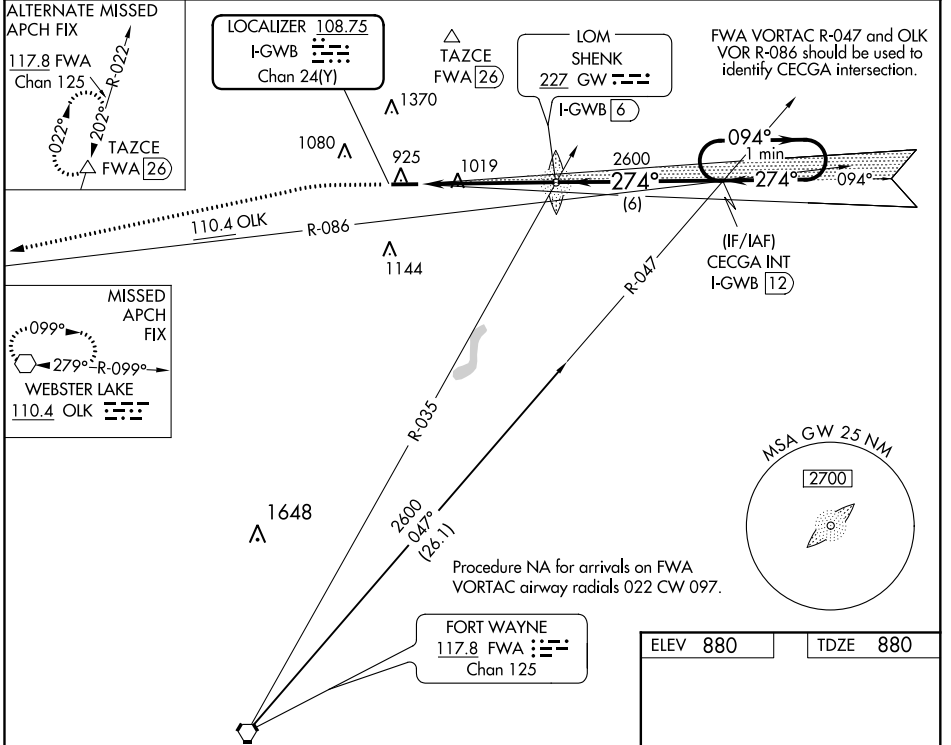
LOC/DME I-GWB 108.75 Chan 24(Y)	APP CRS 274°	Rwy Idg TDZE Apt Elev 5000 880 880
--	------------------------	--

I LS or LOC RWY 27

DE KALB COUNTY (GWB)

NA	MALS MISSED APPROACH: Climb to 1400 then climbing left turn to 3000 direct OLK VOR and hold.
----	---

AWOS-3 124.15	FORT WAYNE APP CON 127.2 284.6	CLNC DEL 126.6	UNICOM 123.0 (CTAF)
-------------------------	--	--------------------------	-------------------------------



ELEV 880	TDZE 880
REIL Rwys 9 and 27	MIRL Rwy 9-27
FAF to MAP 5 NM	
Knots	60 90 120 150 180
Min:Sec	5:00 3:20 2:30 2:00 1:40

CATEGORY	A	B	C	D
S-ILS 27	1080-1/2		200 (200-1/2)	
S-LOC 27	1320-1/2 440 (500-1/2)	1320-3/4 440 (500-3/4)	1320-1 440 (500-1)	
CIRCLING	1320-1 440 (500-1)	1560-1 680 (700-1)	1720-2 1/2 840 (900-2 1/2)	1720-2 3/4 840 (900-2 3/4)

EC-2, 03 DEC 2020 to 31 DEC 2020

EC-2, 03 DEC 2020 to 31 DEC 2020

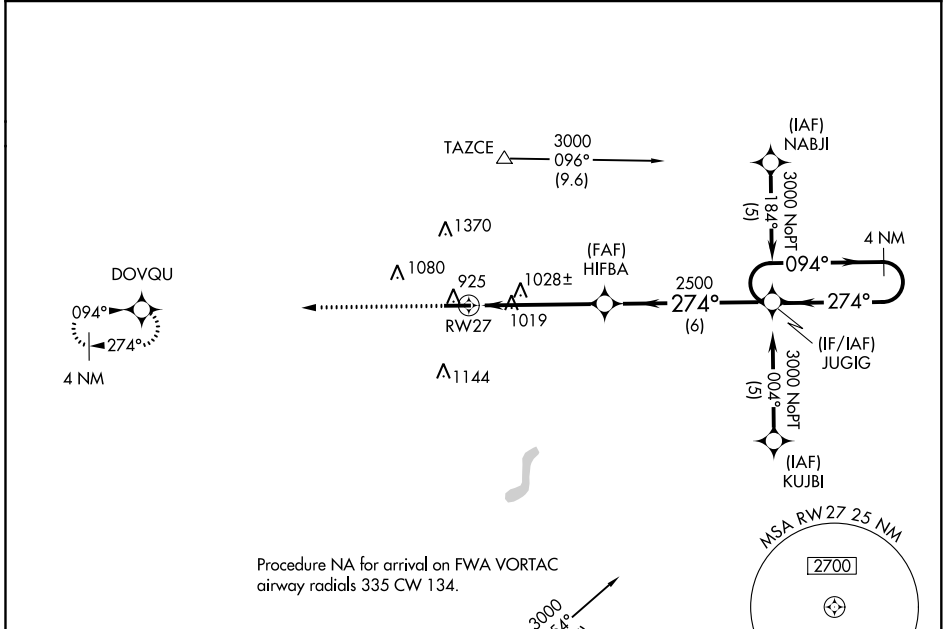
WAAS CH 86401 W27A	APP CRS 274°	Rwy Idg 5000 TDZE 880 Apt Elev 880
--	------------------------	---

RNAV (GPS) RWY 27

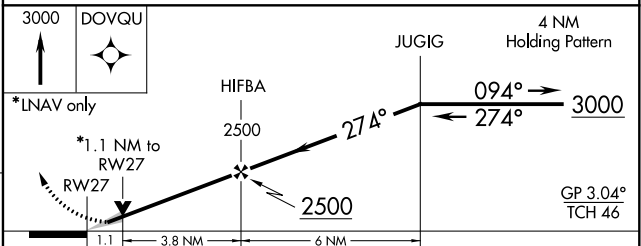
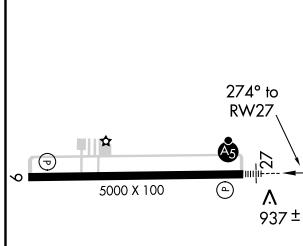
DE KALB COUNTY (GWB)

For uncompensated Baro-VNAV systems, LNAV/VNAV NA below -16°C (4°F) or above 54°C (130°F). DME/DME RNP-0.3 NA.	MALSR MISSED APPROACH: Climb to 3000 direct DOVQU and hold.
--	--

AWOS-3 124.15	FORT WAYNE APP CON 127.2 284.6	CLNC DEL 126.6	UNICOM 123.0 (CTAF)
-------------------------	--	--------------------------	-------------------------------



ELEV 880	TDZE 880
----------	----------



CATEGORY	A	B	C	D
LPV DA	1130-1/2 250 (300-1/2)			
LNAV/VNAV DA	1207-5/8 327 (400-5/8)			
LNAV MDA	1280-1/2 400 (400-1/2)	1280-3/4 400 (400-3/4)		
CIRCLING	1320-1 440 (500-1)	1560-1 680 (700-1)	1720-2 1/2 840 (900-2 1/2)	1720-2 3/4 840 (900-2 3/4)

EC-2, 03 DEC 2020 to 31 DEC 2020

EC-2, 03 DEC 2020 to 31 DEC 2020

WAAS CH 40201 W09A	APP CRS 094°	Rwy Idg 5000 TDZE 880 Apt Elev 880
--	------------------------	---

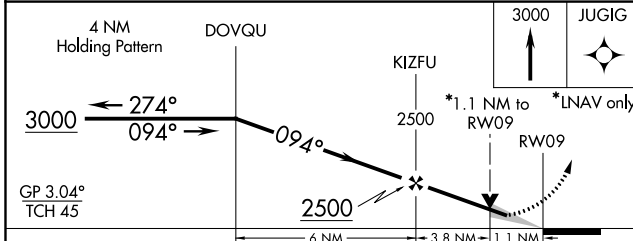
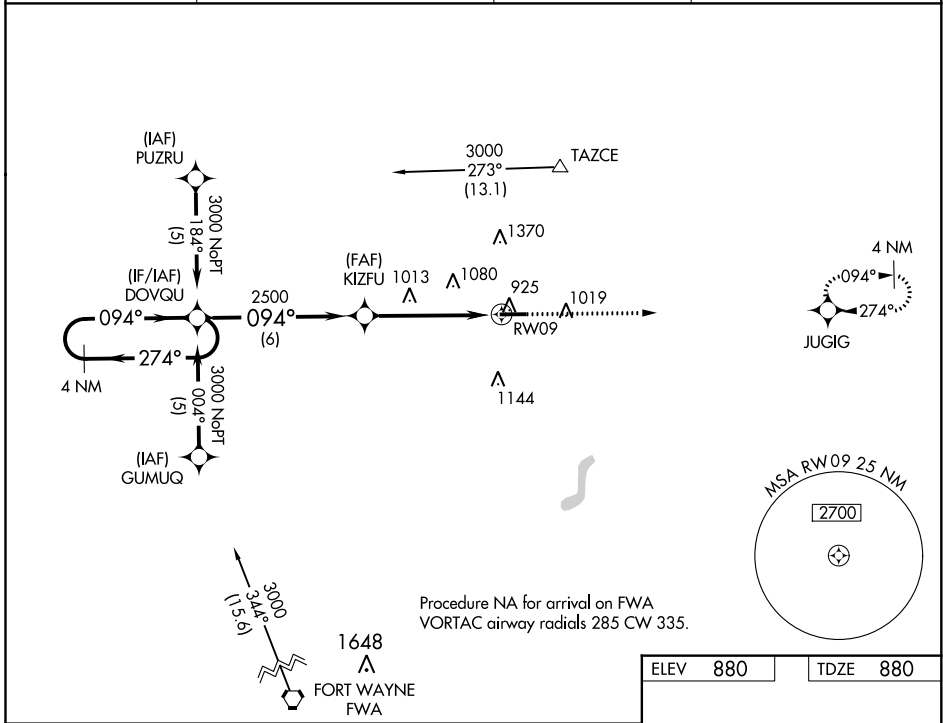
RNAV (GPS) RWY 9

DE KALB COUNTY (GWB)

▼ For uncompensated Baro-VNAV systems, LNAV/VNAV below -16°C (4°F) or above 54°C (130°F).
▲ DME/DME RNP-0.3 NA.

MISSED APPROACH:
Climb to 3000 direct
JUGIG and hold.

AWOS-3 124.15	FORT WAYNE APP CON 127.2 284.6	CLNC DEL 126.6	UNICOM 123.0 (CTAF) 0
-------------------------	--	--------------------------	---------------------------------



ELEV 880	TDZE 880
<p>REIL Rwy 9 and 27 0 MIRL Rwy 9-27 0</p>	

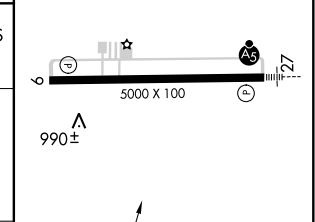
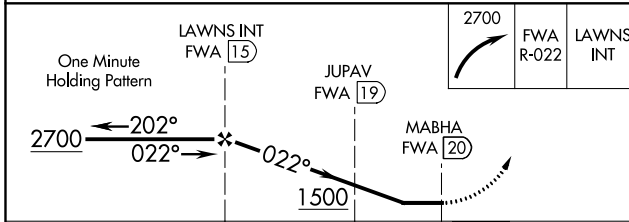
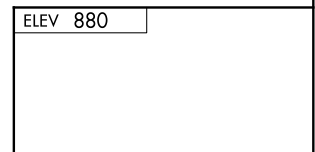
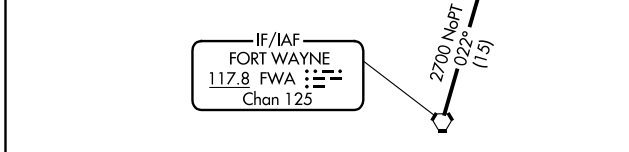
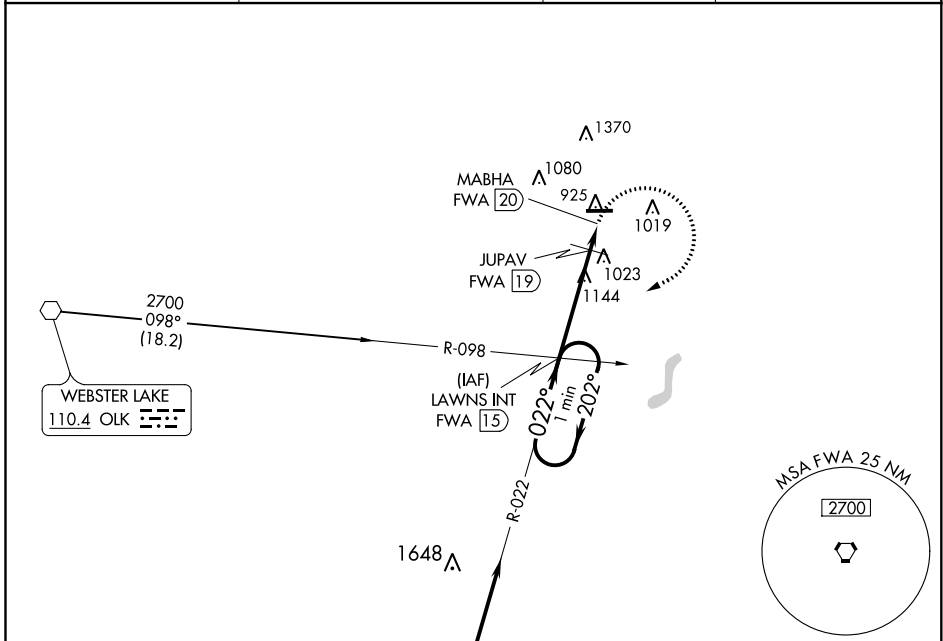
EC-2, 03 DEC 2020 to 31 DEC 2020

EC-2, 03 DEC 2020 to 31 DEC 2020

VORTAC FWA 117.8 Chan 125	APP CRS 022°	Rwy Idg TDZE N/A Apt Elev 880
--	------------------------	---

VOR-A
DE KALB COUNTY (GWB)

		MISSED APPROACH: Climbing right turn to 2700 on FWA R-022 to LAWNS INT/FWA 15 DME and hold.	
AWOS-3 124.15	FORT WAYNE APP CON 127.2 284.6	CLNC DEL 126.6	UNICOM 123.0 (CTAF)



CATEGORY	A	B	C	D
CIRCLING	1500-1 620 (700-1)	1560-1 680 (700-1)	1720-2½ 840 (900-2½)	1720-2¾ 840 (900-2¾)
JUPAV FIX MINIMUMS				
CIRCLING	1360-1 480 (500-1)	1560-1 680 (700-1)	1720-2½ 840 (900-2½)	1720-2¾ 840 (900-2¾)

FAF to MAP 5 NM					
Knots	60	90	120	150	180
Min:Sec	5:00	3:20	2:30	2:00	1:40

EC-2, 03 DEC 2020 to 31 DEC 2020

EC-2, 03 DEC 2020 to 31 DEC 2020

INSTRUMENT APPROACH PROCEDURE CHARTS

A IFR ALTERNATE AIRPORT MINIMUMS

Standard alternate minimums for non-precision approaches and approaches with vertical guidance [NDB, VOR, LOC, TACAN, LDA, SDF, VOR/DME, ASR, RNAV (GPS) or RNAV (RNP)] are 800-2. Standard alternate minimums for precision approaches (ILS, PAR, or GLS) are 600-2. Airports within this geographical area that require alternate minimums other than standard or alternate minimums with restrictions are listed below. NA - means alternate minimums are not authorized due to unmonitored facility, absence of weather reporting service, or lack of adequate navigation coverage. Civil pilots see FAR 91. IFR Alternate Minimums: Ceiling and Visibility Minimums not applicable to USA/USN/USAF. Pilots must review the IFR Alternate Minimums Notes for alternate airfield suitability.

AKRON, OH
AKRON FULTON
INTL (AKR).....**LOC Rwy 25**
NDB Rwy 25
RNAV (GPS) Rwy 25

Category D, 800-2½.

ANDERSON, IN
ANDERSON MUNI-DARLINGTON
FIELD (AID).....**ILS or LOC Rwy 30¹²**
NDB Rwy 30¹
RNAV (GPS) Rwy 30³

¹NA when control tower closed.
²ILS, Categories C, D, 700-2.
³NA when local weather not available.

ATHENS/ALBANY, OH
OHIO
UNIVERSITY (UNI).....**RNAV (GPS) Rwy 7**
RNAV (GPS) Rwy 25

Category D, 800-2¼.

AUBURN, IN
DE KALB
COUNTY (GWB).....**RNAV (GPS) Rwy 9**
RNAV (GPS) Rwy 27
VOR-A

Category C, 900-2½; Category D, 900-2¼.

BATAVIA, OH
CLERMONT
COUNTY (169).....**RNAV (GPS) Rwy 4**
RNAV (GPS) Rwy 22
VOR-B

NA when local weather not available.

BEDFORD, IN
VIRGIL I. GRISSOM
MUNI (BFR).....**RNAV (GPS) Rwy 13**
NA when local weather not available.

BELLEFONTAINE, OH
BELLEFONTAINE
RGNL (EDJ).....**VOR Rwy 7**
NA when local weather not available.

BLOOMINGTON, IN
MONROE
COUNTY (BMG).....**ILS or LOC/DME Rwy 35**
RNAV (GPS) Rwy 17
RNAV (GPS) Rwy 24
RNAV (GPS) Rwy 35
VOR Rwy 17
VOR/DME Rwy 6

NA when local weather not available.

CAMBRIDGE, OH
CAMBRIDGE MUNI (CDI).....**RNAV (GPS) Rwy 4**
RNAV (GPS) Rwy 22

NA when local weather not available.
Category C, 1100-3.

CHILLICOTHE, OH
ROSS COUNTY (RZT).....**RNAV (GPS) Rwy 23**
NA when local weather not available.
Category D, 800-2¼.

CINCINNATI, OH
CINCINNATI MUNI AIRPORT-LUNKEN
FIELD (LUK).....**ILS or LOC Rwy 21L¹²**
LOC BC Rwy 3R¹⁶
RNAV (GPS) Rwy 3R³
RNAV (GPS) Rwy 21L⁴
RNAV (GPS) Rwy 25⁵

NA when local weather not available.
¹NA when control tower closed.
²LOC, Category B, 900-2; Category C, 900-2½; Category D, 1000-3.
³Categories A, B, 900-2; Category C, 900-2½; Category D, 900-2¼.
⁴Categories A, B, 900-2¼; Category C, 900-2½; Category D, 900-2¼.
⁵Categories A, B, C, 900-2½; Category D, 900-2¼.
⁶Categories A, B, 900-2; Category C, 900-2½; Category D, 1000-3.

03 DEC 2020 to 31 DEC 2020

03 DEC 2020 to 31 DEC 2020

NAME ALTERNATE MINIMUMS

CIRCLEVILLE, OH

PICKAWAY COUNTY
MEMORIAL (CYO).....RNAV (GPS) Rwy 1
RNAV (GPS) Rwy 19
VOR Rwy 19

NA when local weather not available.

CLEVELAND, OH

BURKE
LAKEFRONT (BKL).....ILS or LOC Rwy 24R¹
RNAV (GPS) Rwy 24R²

¹NA when control tower closed.

²Categories A, B, 1100-2; Categories C, D, 1100-3.

CUYAHOGA

COUNTY (CGF).....ILS or LOC Rwy 24¹
RNAV (GPS) Rwy 6²
RNAV (GPS) Rwy 24³

¹LOC, Category D, 800-2½.

²Category D, 800-2¼.

³Category D, 800-2½.

COLUMBUS, IN

COLUMBUS
MUNI (BAK).....RNAV (GPS) Rwy 5
RNAV (GPS) Rwy 14¹
RNAV (GPS) Rwy 23
RNAV (GPS) Rwy 32

NA when local weather not available.

¹Category D, 800-2½.

COLUMBUS, OH

BOLTON FIELD (TZR).....ILS or LOC Rwy 4¹²
NDB Rwy 4¹
RNAV (GPS) Rwy 22²

¹NA when control tower closed.

²NA when local weather not available.

JOHN GLENN COLUMBUS

INTL (CMH).....ILS or LOC Rwy 10L¹
ILS or LOC Rwy 10R²
ILS or LOC Rwy 28L⁴
ILS or LOC Rwy 28R²
RNAV (GPS) Y Rwy 10L⁵
RNAV (GPS) Y Rwy 10R⁵
RNAV (GPS) Y Rwy 28L³
RNAV (GPS) Y Rwy 28R⁵

¹ILS, LOC, Categories A, B, 900-2; Category C, 900-2¾; Category D, 900-3.

²ILS, Categories A, B, 700-2; Category C, 800-2; Category D, 800-2¼; LOC, Category D, 800-2¼.

³Category D, 800-2¾.

⁴ILS, Categories A, B, 800-2; Category C, 800-2¼; Category D, 800-2½; LOC Category C, 800-2¼; Category D, 800-2½.

⁵Category D, 800-2¼.

NAME ALTERNATE MINIMUMS

COLUMBUS, OH (CON'T)

OHIO STATE
UNIVERSITY (OSU).....ILS or LOC Rwy 9R¹
NDB Rwy 9R¹
RNAV (GPS) Rwy 9R
RNAV (GPS) Rwy 27L

NA when local weather not available.

¹NA when control tower closed.

RICKENBACKER

INTL (LCK).....ILS or LOC Rwy 5L
ILS or LOC Rwy 23L
RNAV (GPS) Rwy 5L
RNAV (GPS) Rwy 5R
RNAV (GPS) Rwy 23L
RNAV (GPS) Rwy 23R

NA when local weather not available.

CRAWFORDSVILLE, IN

CRAWFORDSVILLE
RGNL (CFJ).....RNAV (GPS) Rwy 4
RNAV (GPS) Rwy 22

NA when local weather not available.

Category D, 800-2¼.

DAYTON, OH

DAYTON-WRIGHT
BROTHERS (MGY).....RNAV (GPS) Rwy 2
RNAV (GPS) Rwy 20

NA when local weather not available.

Category D, 800-2¼.

JAMES M COX DAYTON

INTL (DAY).....ILS or LOC Rwy 6L
ILS, Category D, 700-2.

DEFIANCE, OH

DEFIANCE
MEMORIAL (DFI).....RNAV (GPS) Rwy 12

Category D, 800-2¼.

ELKHART, IN

ELKHART
MUNI (EKM).....ILS or LOC Rwy 27¹
RNAV (GPS) Rwy 9²
RNAV (GPS) Rwy 18²
RNAV (GPS) Rwy 27²
RNAV (GPS) Rwy 36²
VOR Rwy 9²

¹ILS, NA when control tower closed. LOC, NA.

²NA when local weather not available.

EVANSVILLE, IN

EVANSVILLE
RGNL (EVV).....ILS or LOC Rwy 4¹
ILS or LOC Rwy 22²

NA when control tower closed.

¹ILS, Categories A, B, 800-2; Categories C, D, 800-2½; LOC, Categories C, D, 800-2½.

²ILS, Categories A, B, C, D, 700-2.

03 DEC 2020 to 31 DEC 2020

03 DEC 2020 to 31 DEC 2020

NAME ALTERNATE MINIMUMS

FINDLAY, OH

FINDLAY (FDY).....VOR Rwy 7
NA when local weather not available.

FORT WAYNE, IN

FORT WAYNE
INTL (FWA).....ILS or LOC Rwy 5¹
ILS or LOC Rwy 32²
RADAR-1³
RNAV (GPS) Rwy 5³
RNAV (GPS) Rwy 14⁴
RNAV (GPS) Rwy 23³
RNAV (GPS) Rwy 32⁴
VOR or TACAN Rwy 5³
VOR or TACAN Rwy 14³
VOR or TACAN Rwy 23³

¹ILS, Category C, 700-2; Category D, 800-2 $\frac{1}{4}$;
Category E, 800-2 $\frac{1}{2}$; LOC, Category D,
800-2 $\frac{1}{4}$; Category E, 800-2 $\frac{1}{2}$.
²LOC, Category D, 800-2 $\frac{1}{4}$, Category E, 800-2 $\frac{1}{2}$.
³Category D, 800-2 $\frac{1}{4}$, Category E, 800-2 $\frac{1}{2}$.
⁴Category D, 800-2 $\frac{1}{4}$.

SMITH FIELD (SMD).....RNAV (GPS) Rwy 5
Categories A, B, 1100-2; Category C, 1200-3.

FOSTORIA, OH

FOSTORIA
METROPOLITAN (FZI).....RNAV (GPS) Rwy 9
NA when local weather not available.

FRENCH LICK, IN

FRENCH LICK
MUNI (FRH).....RNAV (GPS) Rwy 8
RNAV (GPS) Rwy 26
Category D, 800-2 $\frac{1}{4}$.

GARY, IN

GARY/CHICAGO
INTL (GY).....COPTER ILS or LOC Rwy 30¹
ILS or LOC Rwy 30¹⁴
RNAV (GPS) Rwy 2²³
RNAV (GPS) Y Rwy 12³
RNAV (GPS) Y Rwy 30²³
RNAV (RNP) Z Rwy 30²

¹NA when control tower closed.
²NA when local weather not available.
³Category C, 900-2 $\frac{1}{4}$; Category D, 900-2 $\frac{3}{4}$.
⁴ILS Categories A, B, 700-2; Category C, 900-2 $\frac{1}{4}$;
Category D, 900-2 $\frac{3}{4}$; LOC Category C, 900-2 $\frac{1}{4}$;
Category D, 900-2 $\frac{3}{4}$.

GOSHEN, IN

GOSHEN MUNI (GSH).....RNAV (GPS) Rwy 9
RNAV (GPS) Rwy 27
NA when local weather not available.

NAME ALTERNATE MINIMUMS

HAMILTON, OH

BUTLER COUNTY RGNL-HOGAN
FIELD (HAO).....ILS or LOC Rwy 29¹²
RNAV (GPS) Rwy 11³
RNAV (GPS) Rwy 29³

¹NA when local weather not available.
²LOC, Categories A, B, 900-2;
Category C, 900-2 $\frac{1}{2}$; Category D, 1200-3.
³Category D, 1200-3.

HUNTINGBURG, IN

HUNTINGBURG (HNB).....RNAV (GPS) Rwy 9
RNAV (GPS) Rwy 27
NA when local weather not available.

HUNTINGTON, IN

HUNTINGTON
MUNI (HHG).....RNAV (GPS) Rwy 9
RNAV (GPS) Rwy 27
VOR-A
Category D, 800-2 $\frac{1}{4}$.

INDIANAPOLIS, IN

EAGLE CREEK
AIRPARK (EYE).....RNAV (GPS) Rwy 21
VOR-A
NA when local weather not available.

INDIANAPOLIS

EXECUTIVE (TYQ).....RNAV (GPS) Rwy 18
VOR Rwy 18
NA when local weather not available.

INDIANAPOLIS

INTL (IND).....ILS or LOC Rwy 5L¹
ILS or LOC Rwy 5R¹
ILS or LOC Rwy 14¹
ILS or LOC Rwy 23L¹
ILS or LOC Rwy 23R¹
ILS or LOC Rwy 32¹
RNAV (GPS) Y Rwy 5L²
RNAV (GPS) Y Rwy 5R²
RNAV (GPS) Y Rwy 14²
RNAV (GPS) Y Rwy 23L²
RNAV (GPS) Y Rwy 23R²
RNAV (GPS) Y Rwy 32²

¹ILS Categories A, B, C, 700-2; Category D, 800-
2 $\frac{1}{2}$; LOC Category D, 800-2 $\frac{1}{2}$.
²Category D, 800-2 $\frac{1}{2}$.

INDIANAPOLIS

RGNL (MQJ).....RNAV (GPS) Rwy 16
RNAV (GPS) Rwy 25¹
Category D, 800-2 $\frac{1}{4}$.
¹NA when local weather not available.

INDY SOUTH

GREENWOOD (HFY).....RNAV (GPS) Rwy 1
Category D, 1100-3.

03 DEC 2020 to 31 DEC 2020

03 DEC 2020 to 31 DEC 2020

NAME ALTERNATE MINIMUMS

JEFFERSONVILLE, IN

CLARK RGNL (JVY).....RNAV (GPS) Rwy 18
NA when local weather not available.

KENDALLVILLE, IN

KENDALLVILLE
MUNI (C62).....RNAV (GPS) Rwy 10
RNAV (GPS) Rwy 28
NA when local weather not available.

KNOX, IN

STARKE COUNTY (OXI).....RNAV (GPS) Rwy 18
NA when local weather not available.

KOKOMO, IN

KOKOMO MUNI (OKK).....ILS or LOC Rwy 23¹³
RNAV (GPS) Rwy 5¹²
RNAV (GPS) Rwy 14¹²
RNAV (GPS) Rwy 23¹²
RNAV (GPS) Rwy 32¹²
VOR Rwy 32²

¹NA when local weather not available.

²Category D, 900-2½.

³ILS, LOC, Category D, 900-2½.

LAFAYETTE, IN

PURDUE
UNIVERSITY (LAF).....ILS or LOC Rwy 10¹
RNAV (GPS) Rwy 10³⁴
RNAV (GPS) Rwy 28³⁴
VOR-A²⁵

¹ILS, Category D, 800-2¼. NA when control tower closed. LOC, NA.

²NA when control tower closed.

³Category D, 800-2¼.

⁴NA when local weather not available.

⁵Category D, 800-2¼.

LANCASTER, OH

FAIRFIELD
COUNTY (LHQ).....RNAV (GPS) Rwy 2
RNAV (GPS) Rwy 28
NA when local weather not available.

LA PORTE, IN

LA PORTE
MUNI (PPO).....RNAV (GPS) Rwy 2
RNAV (GPS) Rwy 20
NA when local weather not available.
Category C, 800-2¼, Category D, 800-2½.

LIMA, OH

LIMA ALLEN
COUNTY (AOH).....RNAV (GPS) Rwy 10
RNAV (GPS) Rwy 28
NA when local weather not available.

NAME ALTERNATE MINIMUMS

LOGANSPORT, IN

LOGANSPORT/
CASS COUNTY (GGP).....VOR-A
NA when local weather not available.

LORAIN/ELYRIA, OH

LORAIN COUNTY
RGNL (LPR).....ILS or LOC Rwy 7¹
VOR-A
NA when local weather not available.
¹ILS, Categories C, D, 700-2.

MADISON, IN

MADISON MUNI (IMS).....RNAV (GPS) Y Rwy 3
Category C, 1000-3.

MANSFIELD, OH

MANSFIELD LAHM
RGNL (MFD).....ILS or LOC Rwy 32¹³
NDB Rwy 32⁴
RNAV (GPS) Rwy 5⁴
RNAV (GPS) Rwy 14²
RNAV (GPS) Rwy 23⁴
RNAV (GPS) Rwy 32²
VOR Rwy 14⁴
VOR Rwy 32⁴

¹NA when control tower closed.

²NA when local weather not available.

³LOC, Category D, 800-2¼.

⁴Category D, 800-2¼;

MARION, OH

MARION MUNI (MNN).....RNAV (GPS) Rwy 7
RNAV (GPS) Rwy 13
RNAV (GPS) Rwy 25
VOR-A

NA when local weather not available.

MARYSVILLE, OH

UNION COUNTY (MRT).....RNAV (GPS) Rwy 9
RNAV (GPS) Rwy 27
NA when local weather not available.

MICHIGAN CITY, IN

MICHIGAN CITY MUNI-PHILLIPS
FIELD (MGC).....RNAV (GPS) Rwy 20
Category C, 900-2½.

MIDDLETOWN, OH

MIDDLETOWN RGNL/HOOK
FIELD (MWO).....RNAV (GPS) Rwy 5
RNAV (GPS) Rwy 23
NA when local weather not available.
Category D, 1200-3.

03 DEC 2020 to 31 DEC 2020

03 DEC 2020 to 31 DEC 2020

NAME ALTERNATE MINIMUMS

MOUNT VERNON, OH

KNOX
 COUNTY (413).....RNAV (GPS) Rwy 10
 NA when local weather not available.

MONTICELLO, IN

WHITE
 COUNTY (MCX).....RNAV (GPS) Rwy 18
 RNAV (GPS) Rwy 36
 NA when local weather not available.
 Category C, 900-2½; Category D, 900-2¼.

MUNCIE, IN

DELAWARE
 COUNTY RGNL (MIE).....ILS or LOC Rwy 32¹
 RNAV (GPS) Rwy 3²
 RNAV (GPS) Rwy 14²
 RNAV (GPS) Rwy 21²
 RNAV (GPS) Rwy 32²
 VOR Rwy 14²
 VOR Rwy 21²

¹ILS, Category C, 700-2; Category D, 800-2½;
 LOC, Category D, 800-2½.
²NA when local weather not available.

NEW PHILADELPHIA, OH

HARRY CLEVER
 FIELD (PHD).....VOR-A
 Categories A, B, 900-2; Category C, 900-2½.

NEWARK, OH

NEWARK-HEATH (VTA).....LOC Rwy 9¹
 RNAV (GPS) Rwy 9¹
 RNAV (GPS) Rwy 27²
 VOR-A³

¹Category C, 900-2½; Category D, 900-2¼.
²Categories A, B, 900-2; Category C, 900-2½;
 Category D, 900-2¼.
³Categories A, B, 1100-2; Categories C, D, 1100-3.

PORT CLINTON, OH

ERIE-OTTAWA
 INTL (PCW).....RNAV (GPS) Rwy 9¹
 RNAV (GPS) Rwy 27
 NA when local weather not available.
¹Category D, 1000-3.

RAVENNA, OH

PORTAGE
 COUNTY (POV).....RNAV (GPS) Rwy 9
 RNAV (GPS) Rwy 27
 VOR-A
 NA when local weather not available.

RENSELAER, IN

JASPER
 COUNTY (RZL).....RNAV (GPS) Rwy 18
 RNAV (GPS) Rwy 36
 NA when local weather not available.

NAME ALTERNATE MINIMUMS

SHELBYVILLE, IN

SHELBYVILLE
 MUNI (GEZ).....RNAV (GPS) Rwy 1¹
 RNAV (GPS) Rwy 19¹
 VOR Rwy 19

Category D, 800-2¼.
¹NA when local weather not available.

SOUTH BEND, IN

SOUTH BEND
 INTL (SBN).....ILS or LOC Rwy 9R¹
 ILS or LOC Rwy 27L¹²
 RNAV (GPS) Rwy 9L³
 RNAV (GPS) Rwy 9R³
 RNAV (GPS) Rwy 18³
 RNAV (GPS) Rwy 27L³
 RNAV (GPS) Rwy 27R³
 RNAV (GPS) Rwy 36⁴
 VOR Rwy 18³

¹NA when control tower closed.
²LOC, Category D, 800-2¼.
³Category D, 800-2¼.
⁴NA when local weather not available.

SPRINGFIELD, OH

SPRINGFIELD-BECKLEY
 MUNI (SGH).....RNAV (GPS) Rwy 6
 RNAV (GPS) Rwy 24
 NA when local weather not available.

TERRE HAUTE, IN

TERRE HAUTE
 RGNL (HUF).....ILS or LOC Rwy 5¹
 RADAR-1²³
 RNAV (GPS) Rwy 5⁴
 RNAV (GPS) Rwy 14⁴
 RNAV (GPS) Rwy 23⁴
 RNAV (GPS) Rwy 32⁴
 VOR Rwy 5⁴
 VOR Rwy 23⁴

¹LOC, NA when local weather not available.
²Category E, 800-2½.
³NA when control tower closed.
⁴NA when local weather not available.

TOLEDO, OH

TOLEDO
 EXECUTIVE (TDZ).....RNAV (GPS) Rwy 4
 RNAV (GPS) Rwy 32
 NA when local weather not available.
 Category D, 800-2¼.

NAME ALTERNATE MINIMUMS

TOLEDO, OH (CON'T)

EUGENE F KRANZ TOLEDO
EXPRESS (TOL).....**ILS Z or LOC Z Rwy 7¹²**
ILS Z or LOC Z Rwy 25³⁴
RADAR-1⁵
RNAV (GPS) Rwy 7⁵
RNAV (GPS) Rwy 16⁶
RNAV (GPS) Rwy 25⁵
RNAV (GPS) Rwy 34⁶

- ¹ILS, NA when local weather not available.
- ²ILS, NA when control tower closed.
- ³NA when local weather not available.
- ⁴LOC, Category D, 800-2¼; Category E, 800-2½.
- ⁵Category D, 800-2¼, Category E, 800-2½.
- ⁶Category D, 800-2¼.

URBANA, OH

GRIMES FIELD (174).....**RNAV (GPS) Rwy 2**
RNAV (GPS) Rwy 20
VOR-A

NA when local weather not available.

VALPARAISO, IN

PORTER COUNTY
RGNL (VPZ).....**ILS Rwy 27¹**
RNAV (GPS) Rwy 18²
RNAV (GPS) Rwy 27²

- ¹LOC, NA.
- ²NA when local weather not available.

VAN WERT, OH

VAN WERT
COUNTY (VNW).....**RNAV (GPS) Rwy 9**
RNAV (GPS) Rwy 27

NA when local weather not available.

WARSAW, IN

WARSAW MUNI (ASW).....**RNAV (GPS) Rwy 9**
RNAV (GPS) Rwy 27
VOR Rwy 9

NA when local weather not available.

WASHINGTON, IN

DAVIESS
COUNTY (DCY).....**RNAV (GPS) Rwy 18**

NA when local weather not available.

WILLOUGHBY, OH

LAKE COUNTY
EXECUTIVE (LNN).....**RNAV (GPS) Rwy 5¹**
RNAV (GPS) Rwy 10²
RNAV (GPS) Rwy 23
RNAV (GPS) Rwy 28

- NA when local weather not available.
- ¹Categories A, B, 900-2; Category C, 900-2½.
- ²Categories A, B, 1000-2; Category C, 1000-2¼.

NAME ALTERNATE MINIMUMS

WILMINGTON, OH

WILMINGTON
AIR PARK (ILN).....**ILS or LOC Rwy 4L¹²**
ILS or LOC Rwy 4R²³
ILS or LOC Rwy 22L²³
ILS or LOC Rwy 22R¹⁴⁵
RNAV (GPS) Rwy 22R¹

- ¹NA when local weather not available.
- ²ILS, Category D, 700-2.
- ³NA when control tower closed except for operators with approved weather reporting service.
- ⁴NA when control tower closed.
- ⁵LOC, Category C, 800-2¼; Category D, 800-2½.

WOOSTER, OH

WAYNE COUNTY (BJJ).....**RNAV (GPS) Rwy 10**
RNAV (GPS) Rwy 28
VOR Rwy 10¹

- NA when local weather not available.
- ¹Category D, 800-2¼.

YOUNGSTOWN-WARREN, OH

YOUNGSTOWN-WARREN
RGNL (YNG).....**RADAR-1**

NA when Youngstown approach control closed.

ZANESVILLE, OH

ZANESVILLE
MUNI (ZZV).....**RNAV (GPS) Rwy 4¹**
RNAV (GPS) Rwy 22¹
VOR Rwy 4¹
VOR Rwy 22²

- NA when local weather not available.
- ¹Category D, 800-2¼.
- ²Categories A, B, 900-2; Category C, 900-2½; Category D, 900-2¾.