

NDB GUY <b>275</b>	APP CRS <b>177°</b>	Rwy Idg <b>5904</b>
		TDZE <b>3125</b>
		Apt Elev <b>3125</b>

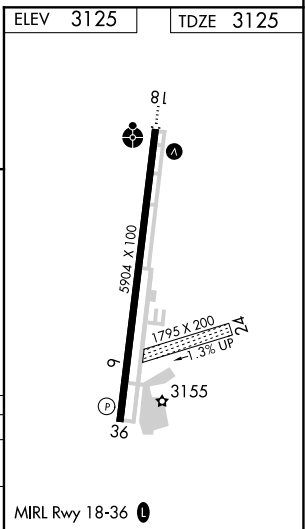
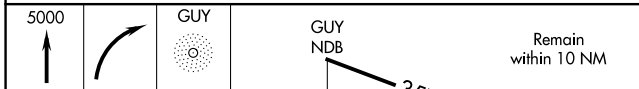
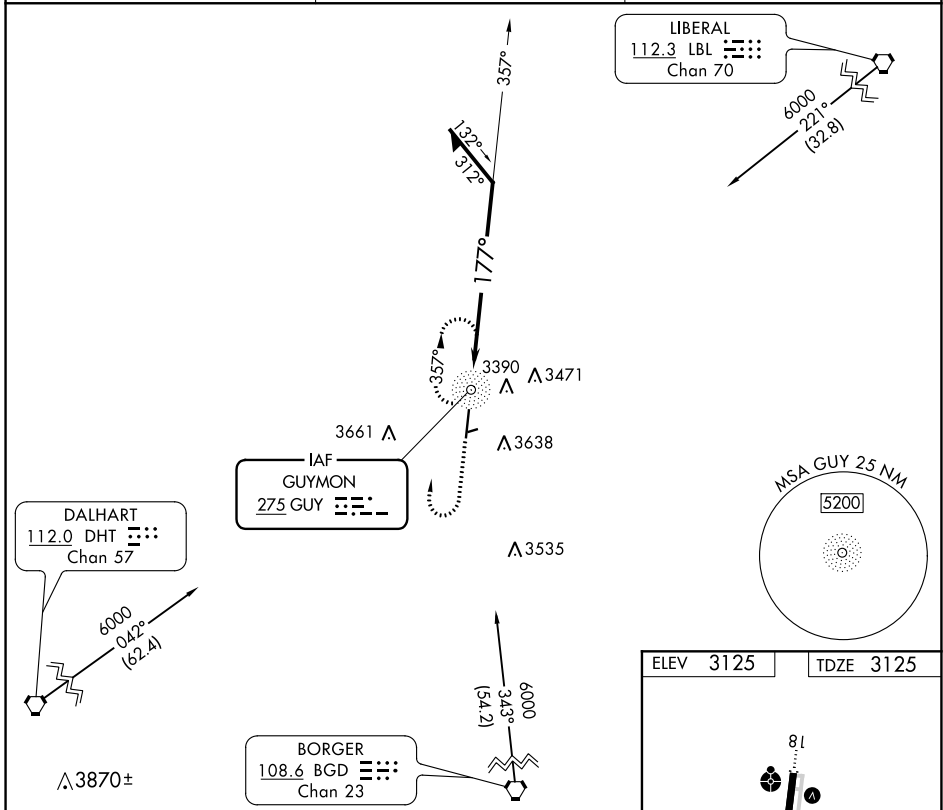
# NDB RWY 18

GUYMON MUNI (GUY)

**▽** Circling NA east of Rwy 18-36. When local altimeter setting not received, use Liberal altimeter setting and increase all MDA 120 feet, increase S-18 Cat A visibility ¼ SM; increase Circling Cats A and C ¼ SM. Circling NA to Rwy 6 and 24.

**ODALS** **MISSED APPROACH:** Climb to 5000 then right turn direct GUY NDB and hold.

ASOS <b>119.925</b>	KANSAS CITY CENTER <b>134.0 257.865</b>	UNICOM <b>122.7 (CTAF) 0</b>
------------------------	--	---------------------------------



CATEGORY	A	B	C	D
S-18	3900-1 775 (800-1)	3900-1¼ 775 (800-1¼)	3900-2½ 775 (800-2½)	NA
CIRCLING	3900-1 775 (800-1)	3900-1¼ 775 (800-1¼)	3900-2½ 775 (800-2½)	NA

SC-1, 17 JUN 2021 to 15 JUL 2021

SC-1, 17 JUN 2021 to 15 JUL 2021

WAAS CH <b>82625</b> <b>W18A</b>	APP CRS <b>177°</b>	Rwy Idg TDZE <b>3125</b> Apt Elev <b>3125</b>
--	------------------------	---

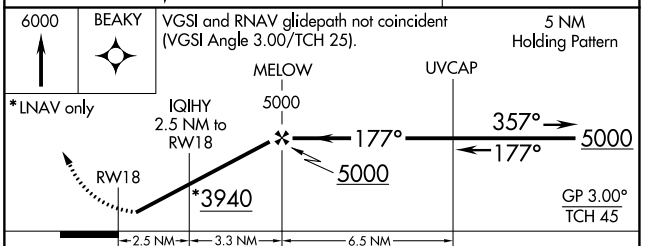
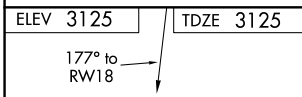
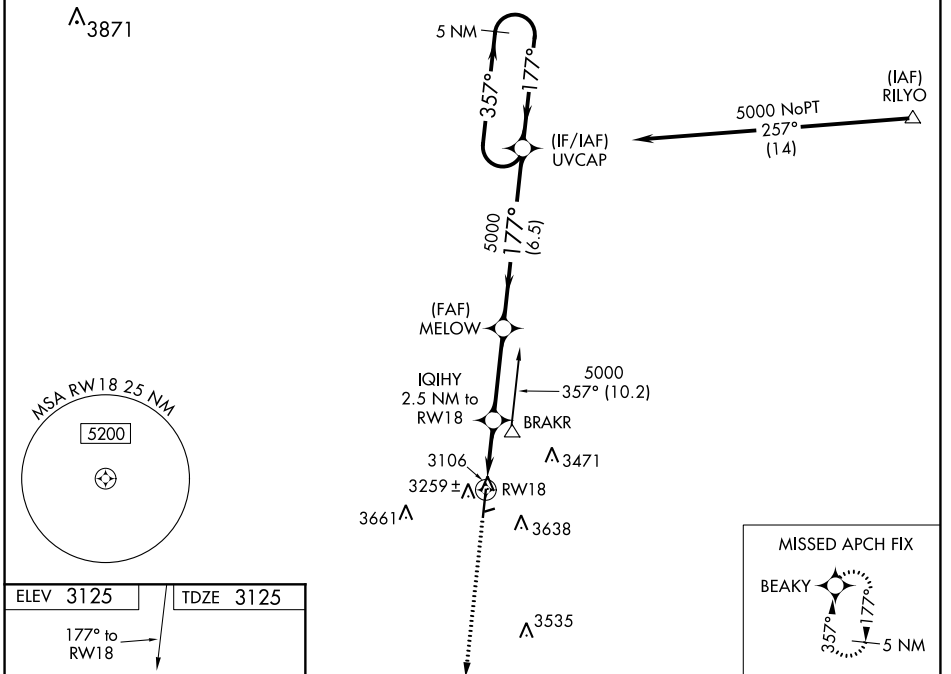
# RNAV (GPS) RWY 18

GUYMON MUNI (GUY)

**⚠** Baro-VNAV NA when using Liberal altimeter setting. For uncompensated Baro-VNAV systems, LNAV/VNAV NA below -21°C (-5°F) or above 54°C (130°F). When VGSI inop, Straight-in/ Circling Rwy 18 procedure NA at night. Circling NA East of Rwy 18-36. DME/DME RNP-0.3 NA. Visibility reduction by helicopters NA. When local altimeter not received, use Liberal altimeter setting and increase all DA 113 feet and all MDA 120 feet, increase LPV all Cats visibility ¼ mile, increase LNAV/VNAV all Cats and LNAV Cat C visibility ⅓ mile. Circling NA to Rwy's 6 and 24.

**ODALS**  
**MISSED APPROACH:**  
Climb to 6000 direct BEAKY and hold.

ASOS <b>119.925</b>	KANSAS CITY CENTER <b>134.0 257.865</b>	UNICOM <b>122.7 (CTAF)</b> <b>📻</b>
------------------------	--	--



CATEGORY	A	B	C	D
LPV DA		3375-1	250 (300-1)	NA
LNAV/VNAV DA		3451-1	326 (400-1)	NA
LNAV MDA		3520-1	395 (400-1)	NA
CIRCLING	3580-1	455 (500-1)	3580-1½ 455 (500-1½)	NA

SC-1, 17 JUN 2021 to 15 JUL 2021

SC-1, 17 JUN 2021 to 15 JUL 2021

WAAS CH <b>50525</b> <b>W36A</b>	APP CRS <b>357°</b>	Rwy Idg 5904 TDZE 3125 Apt Elev 3125
--	------------------------	---

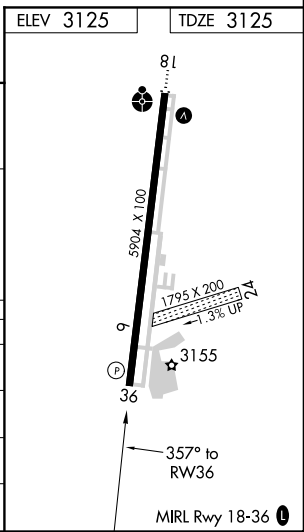
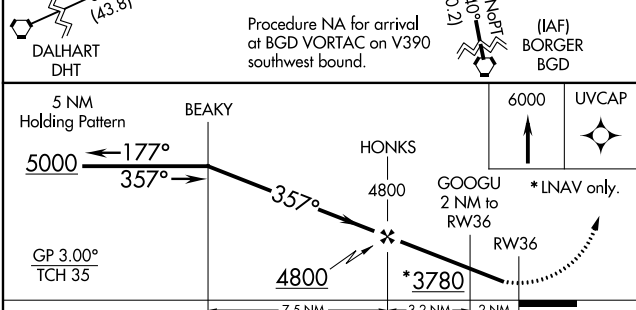
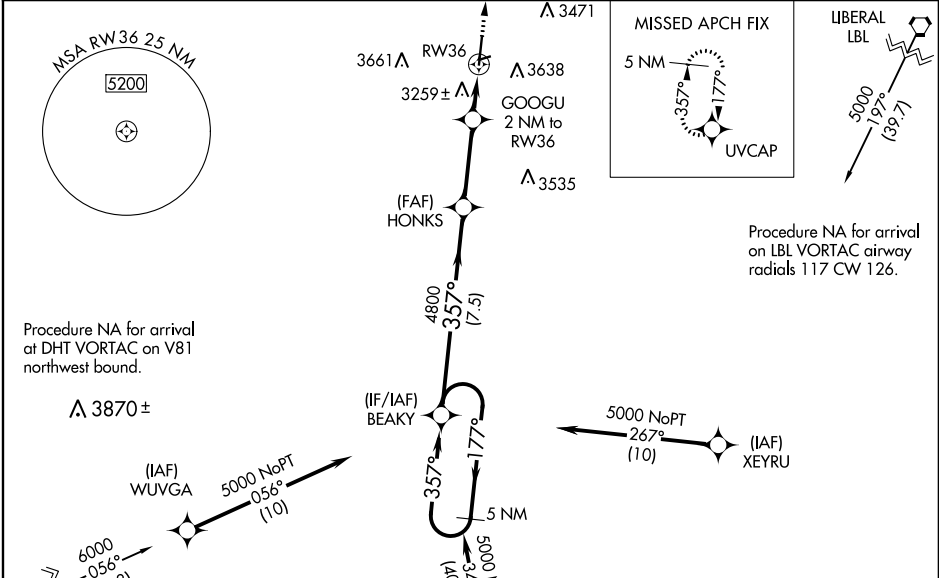
# RNAV (GPS) RWY 36

GUYMON MUNI (GUY)

**⚠** Baro-VNAV NA when using Liberal altimeter setting. For uncompensated Baro-VNAV systems, LNAV/VNAV NA below -21°C (-5°F) or above 54°C (130°F). When VGSi inop, Straight-in/Circling Rwy 36 procedure NA at night. Circling NA East of Rwy 18-36. DME/DME RNP-0.3 NA. Visibility reduction by helicopters NA. When local altimeter not received, use Liberal altimeter setting and increase all DA 113 feet and all MDA 120 feet, increase LPV all Cats visibility ¼ mile, increase LNAV/VNAV all Cats and LNAV Cat C visibility ⅓ mile. Circling NA to Rwy 6 and 24.

**MISSED APPROACH:**  
Climb to 6000 direct UVCAP and hold.

ASOS <b>119.925</b>	KANSAS CITY CENTER <b>134.0 257.865</b>	UNICOM <b>122.7 (CTAF)</b>
------------------------	--	-------------------------------



CATEGORY	A	B	C	D
LPV DA	3375-1 250 (300-1)			NA
LNAV/VNAV DA	3584-1 5/8 459 (500-1 5/8)			NA
LNAV MDA	3520-1 395 (400-1)		3520-1 1/8 395 (400-1 1/8)	NA
CIRCLING	3580-1 455 (500-1)		3580-1 1/2 455 (500-1 1/2)	NA

SC-1, 17 JUN 2021 to 15 JUL 2021

SC-1, 17 JUN 2021 to 15 JUL 2021