

APP CRS	Rwy Idg	<b>2599</b>
<b>210°</b>	TDZE	<b>2559</b>
	Apt Elev	<b>2559</b>

# RNAV (GPS) RWY 21

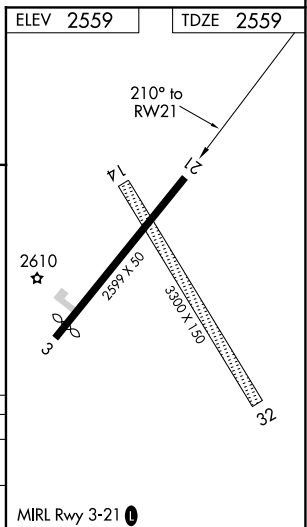
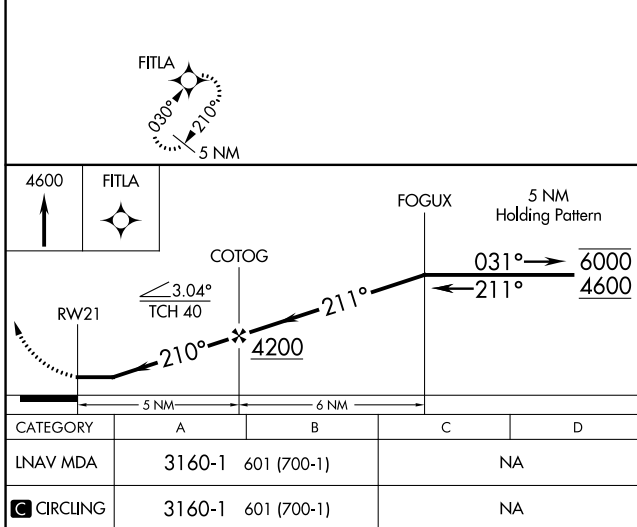
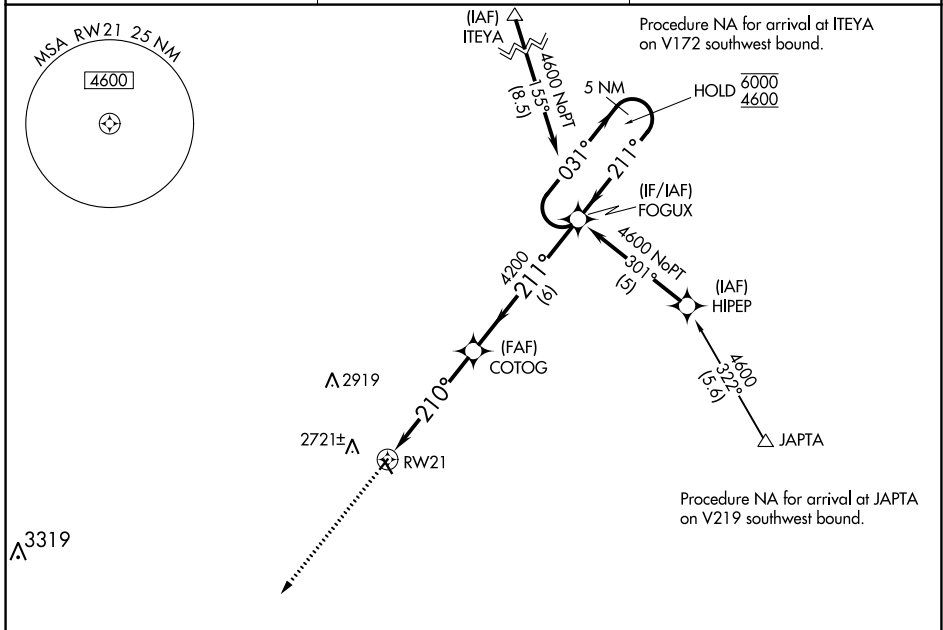
GOTHENBURG MUNI (GTE)

RNP APCH:

**▼** Circling NA to Rwy 14 and 32. Procedure NA at night. Rwy 21 helicopter visibility reduction below 1 SM NA. Use Lexington altimeter setting; when not received, use North Platte altimeter setting and increase all MDA 40 feet.

**MISSED APPROACH:** Climb to 4600 direct FITLA and hold.

LXN AWOS-3	DENVER CENTER	UNICOM
<b>121.025</b>	<b>132.7 226.675</b>	<b>122.8 (CTAF) 0</b>



NC-2, 03 DEC 2020 to 31 DEC 2020

NC-2, 03 DEC 2020 to 31 DEC 2020

# RNAV (GPS) RWY 3

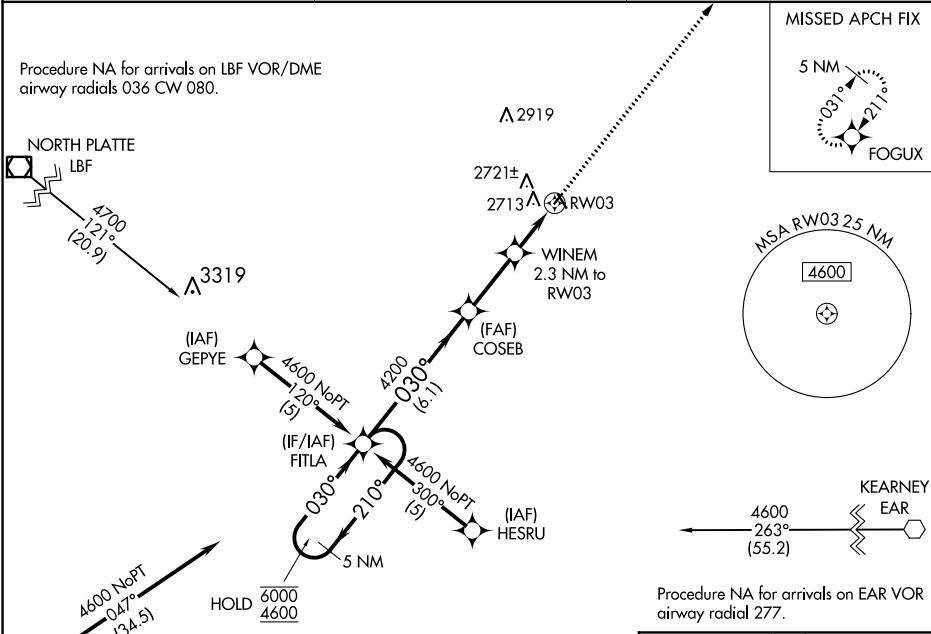
GOTHENBURG MUNI (GTE)

APP CRS	Rwy Idg	<b>2529</b>
<b>030°</b>	TDZE	<b>2559</b>
	Apt Elev	<b>2559</b>

RNP APCH:  
 ⚠ NA Circling NA to Rwy 14 and 32. Procedure NA at night. Rwy 3 helicopter visibility reduction below 1 SM NA. Use Lexington altimeter setting; when not received, use North Platte altimeter setting and increase all MDA 40 feet.

MISSED APPROACH: Climb to 4600 direct FOGUX and hold.

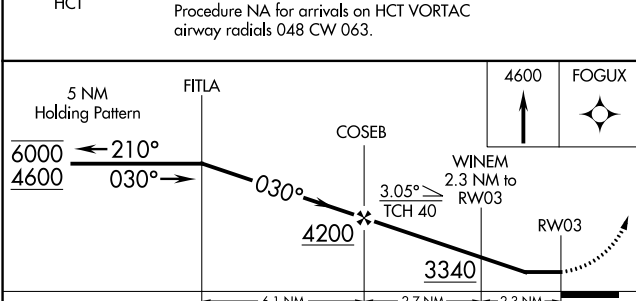
LXN AWO3-3 <b>121.025</b>	DENVER CENTER <b>132.7 226.675</b>	UNICOM <b>122.8 (CTAF) 0</b>
------------------------------	---------------------------------------	---------------------------------



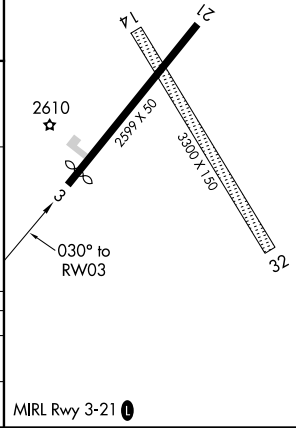
NC-2, 03 DEC 2020 to 31 DEC 2020

NC-2, 03 DEC 2020 to 31 DEC 2020

ELEV	<b>2559</b>	TDZE	<b>2559</b>
------	-------------	------	-------------



ELEV	<b>2559</b>	TDZE	<b>2559</b>
------	-------------	------	-------------



CATEGORY	A	B	C	D
LNVA MDA	3080-1	521 (600-1)		NA
<b>C</b> CIRCLING	3140-1 581 (600-1)	3180-1 621 (700-1)		NA

VOR OZB <b>109.0</b>	APP CRS <b>287°</b>	Rwy Idg TDZE Apt Elev <b>N/A</b> <b>2559</b>
-------------------------	------------------------	---

# VOR-A

GOTHENBURG MUNI (GTE)

**NA** Circling NA to Rwys 14 and 32. Procedure NA at night. Use Lexington altimeter setting; when not received, use North Platte altimeter setting and increase all MDA 40 feet.

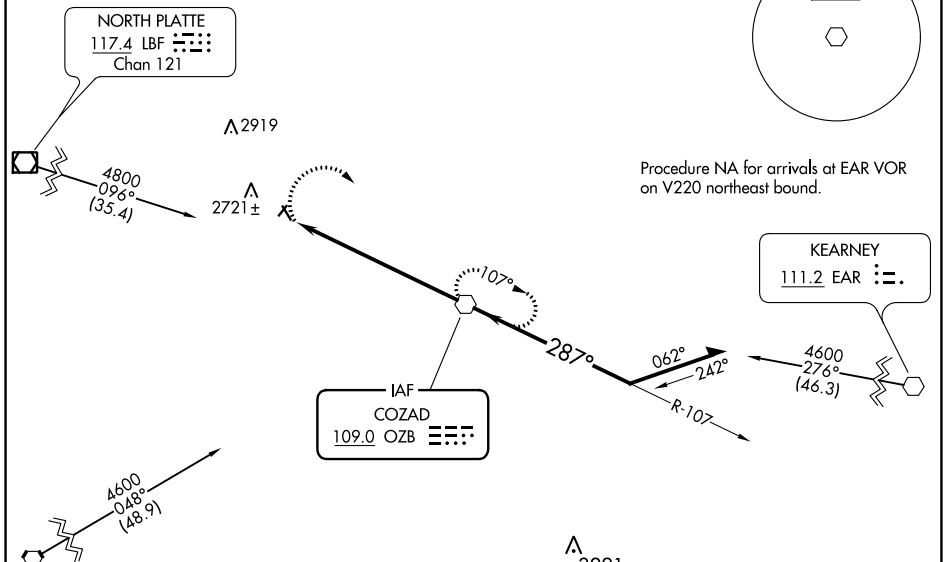
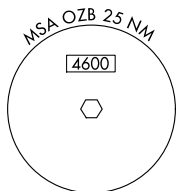
**MISSED APPROACH:** Climbing right turn to 4300 direct OZB VOR and hold.

LXN AWOS-3  
**121.025**

DENVER CENTER  
**132.7 226.675**

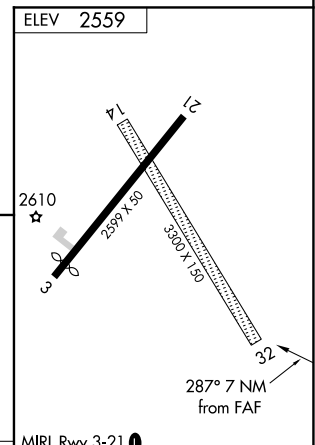
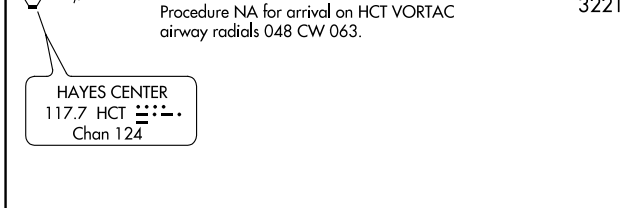
UNICOM  
**122.8 (CTAF)**

Procedure NA for arrival on LBF VOR/DME airway radials 062 CW 080.



NC-2, 03 DEC 2020 to 31 DEC 2020

NC-2, 03 DEC 2020 to 31 DEC 2020



4300 OZB	3500 OZB VOR	4600
Remain within 10 NM	107°	287°
7 NM	3500	4600

CATEGORY	A	B	C	D
<b>CIRCLING</b>	3120-1 561 (600-1)	3180-1 621 (700-1)	NA	

FAF to MAP 7 NM					
Knots	60	90	120	150	180
Min:Sec	7:00	4:40	3:30	2:48	2:20

# VOR-A