

APP CRS	Rwy Idg	2599
210°	TDZE	2559
	Apt Elev	2559

RNAV (GPS) RWY 21

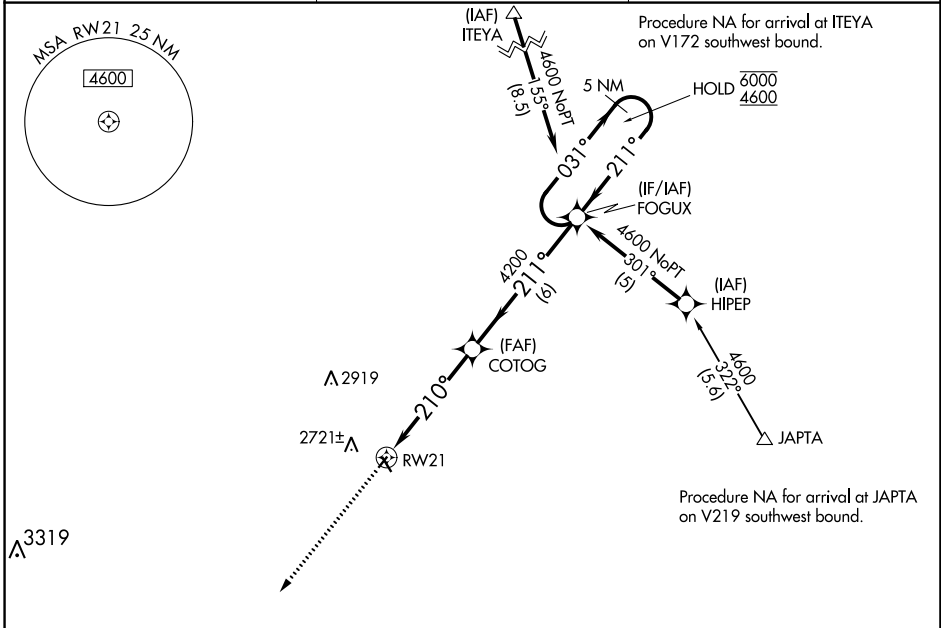
GOTHENBURG MUNI (GTE)

RNP APCH:

▼ Circling NA to Rwy 14 and 32. Procedure NA at night. Rwy 21 helicopter visibility reduction below 1 SM NA. Use Lexington altimeter setting; when not received, use North Platte altimeter setting and increase all MDA 40 feet.

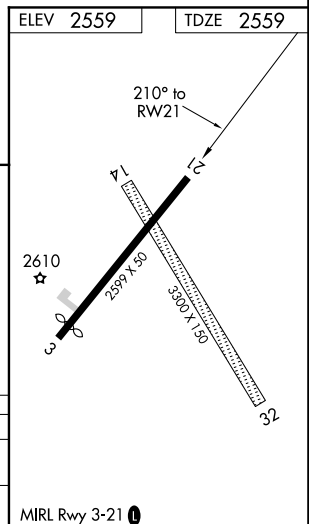
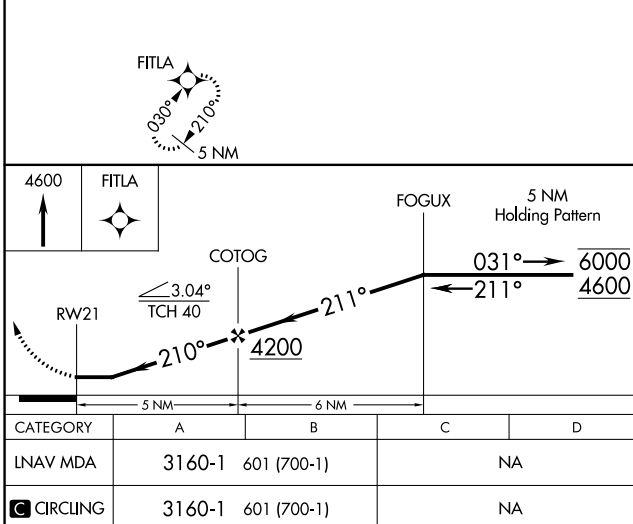
MISSED APPROACH: Climb to 4600 direct FITLA and hold.

LXN AWOS-3	DENVER CENTER	UNICOM
121.025	132.7 226.675	122.8 (CTAF) 0



NC-2, 03 DEC 2020 to 31 DEC 2020

NC-2, 03 DEC 2020 to 31 DEC 2020



RNAV (GPS) RWY 3

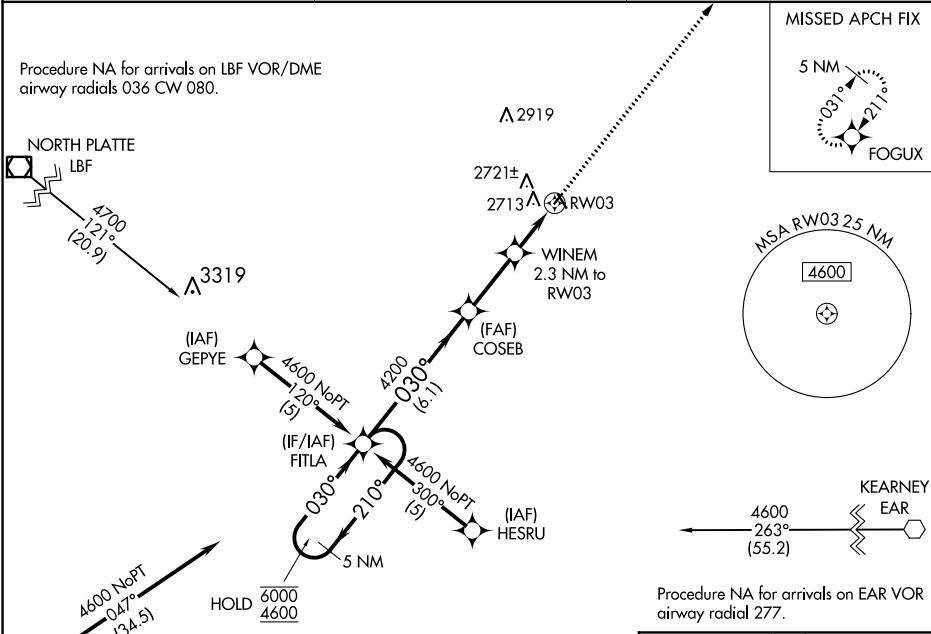
GOTHENBURG MUNI (GTE)

APP CRS	Rwy Idg	2529
030°	TDZE	2559
	Apt Elev	2559

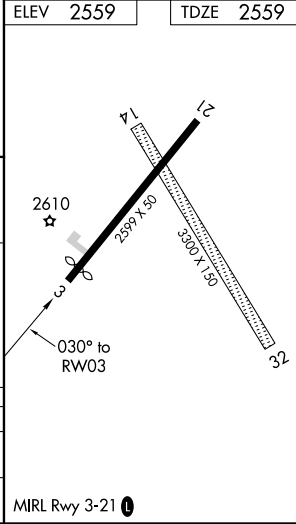
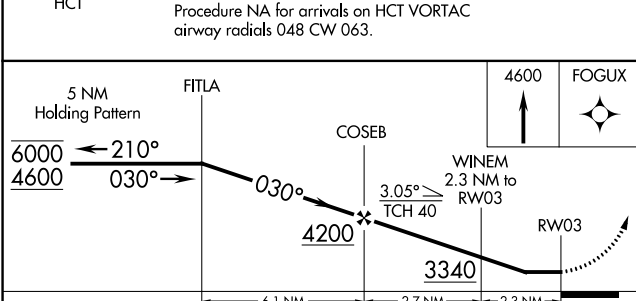
RNP APCH.
 ⚠ NA Circling NA to Rwy 14 and 32. Procedure NA at night. Rwy 3 helicopter visibility reduction below 1 SM NA. Use Lexington altimeter setting; when not received, use North Platte altimeter setting and increase all MDA 40 feet.

MISSED APPROACH: Climb to 4600 direct FOGUX and hold.

LXN AWO3-3 121.025	DENVER CENTER 132.7 226.675	UNICOM 122.8 (CTAF) 0
------------------------------	---------------------------------------	---------------------------------



ELEV	2559	TDZE	2559
------	-------------	------	-------------



CATEGORY	A	B	C	D
LNAV MDA	3080-1	521 (600-1)		NA
C CIRCLING	3140-1 581 (600-1)	3180-1 621 (700-1)		NA

NC-2, 03 DEC 2020 to 31 DEC 2020

NC-2, 03 DEC 2020 to 31 DEC 2020

VOR OZB 109.0	APP CRS 287°	Rwy Idg TDZE Apt Elev N/A N/A 2559
-------------------------	------------------------	--

VOR-A

GOTHENBURG MUNI (GTE)

NA Circling NA to Rwys 14 and 32. Procedure NA at night. Use Lexington altimeter setting; when not received, use North Platte altimeter setting and increase all MDA 40 feet.

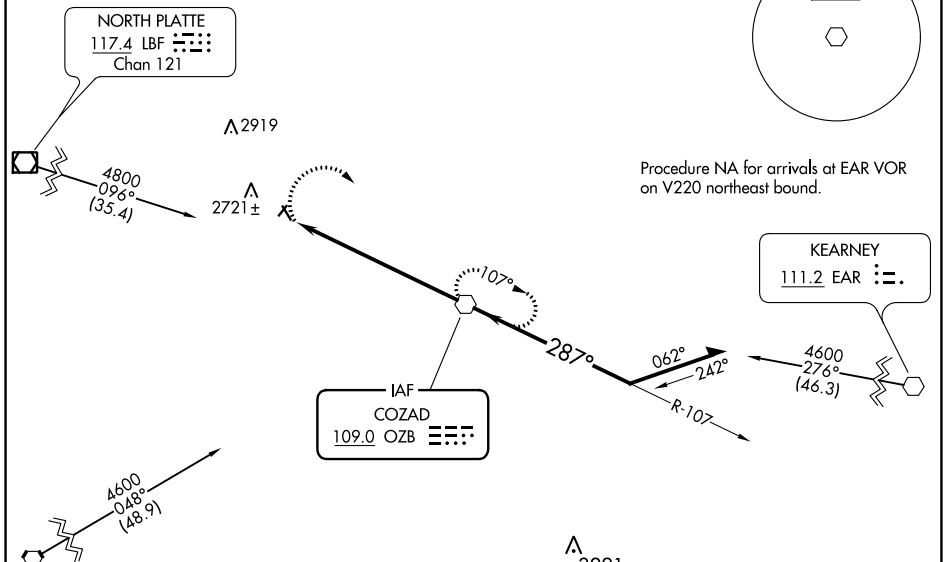
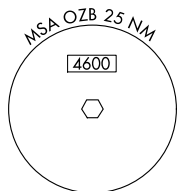
MISSED APPROACH: Climbing right turn to 4300 direct OZB VOR and hold.

LXN AWOS-3
121.025

DENVER CENTER
132.7 226.675

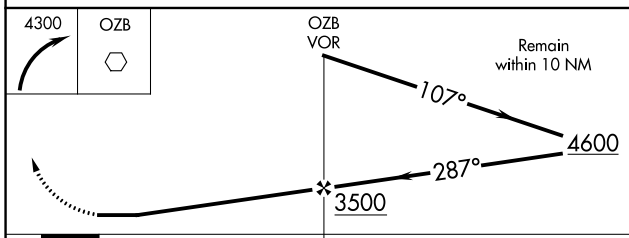
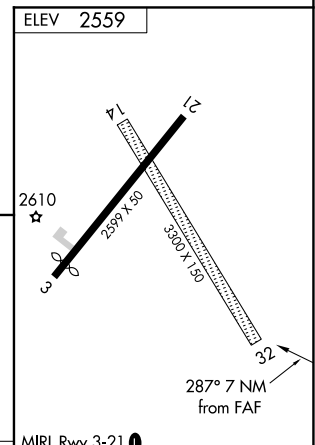
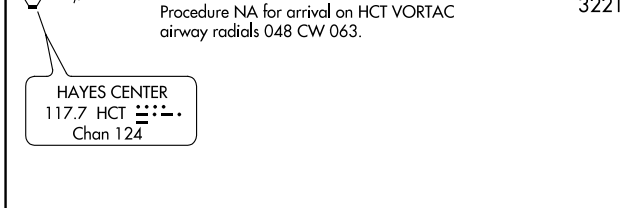
UNICOM
122.8 (CTAF)

Procedure NA for arrival on LBF VOR/DME airway radials 062 CW 080.



NC-2, 03 DEC 2020 to 31 DEC 2020

NC-2, 03 DEC 2020 to 31 DEC 2020



CATEGORY	A	B	C	D
CIRCLING	3120-1 561 (600-1)	3180-1 621 (700-1)	NA	

FAF to MAP 7 NM					
Knots	60	90	120	150	180
Min:Sec	7:00	4:40	3:30	2:48	2:20

VOR-A