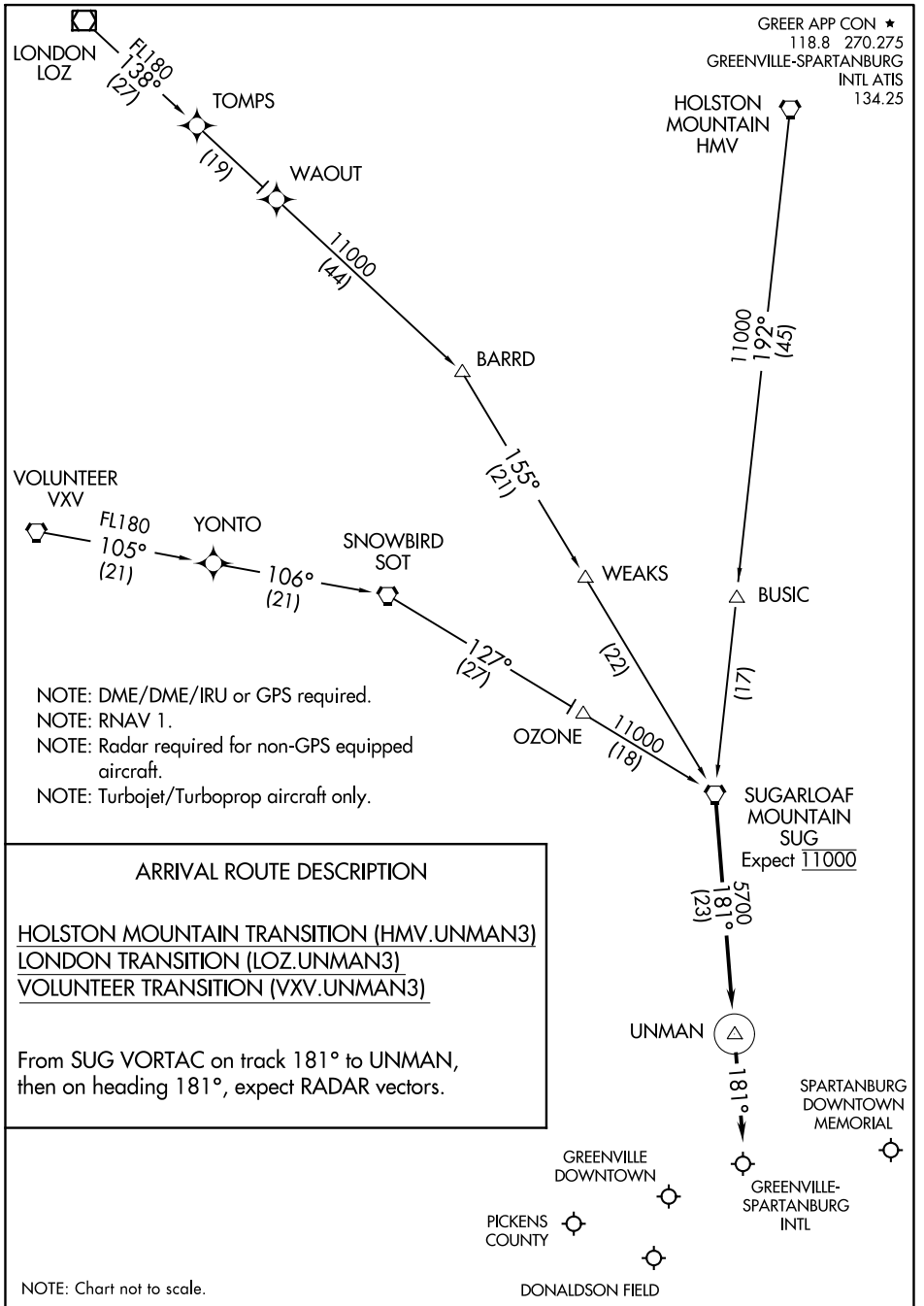


(UNMAN.UNMAN3) 16259

UNMAN THREE ARRIVAL (RNAV) ST-179 (FAA)

GREENVILLE, SOUTH CAROLINA



ARRIVAL ROUTE DESCRIPTION

- HOLSTON MOUNTAIN TRANSITION (HMV.UNMAN3)
- LONDON TRANSITION (LOZ.UNMAN3)
- VOLUNTEER TRANSITION (VXV.UNMAN3)

From SUG VORTAC on track 181° to UNMAN, then on heading 181°, expect RADAR vectors.

NOTE: Chart not to scale.

UNMAN THREE ARRIVAL (RNAV)

GREENVILLE, SOUTH CAROLINA

(UNMAN.UNMAN3) 15SEP16

SE-2: 29 MAR 2018 to 26 APR 2018

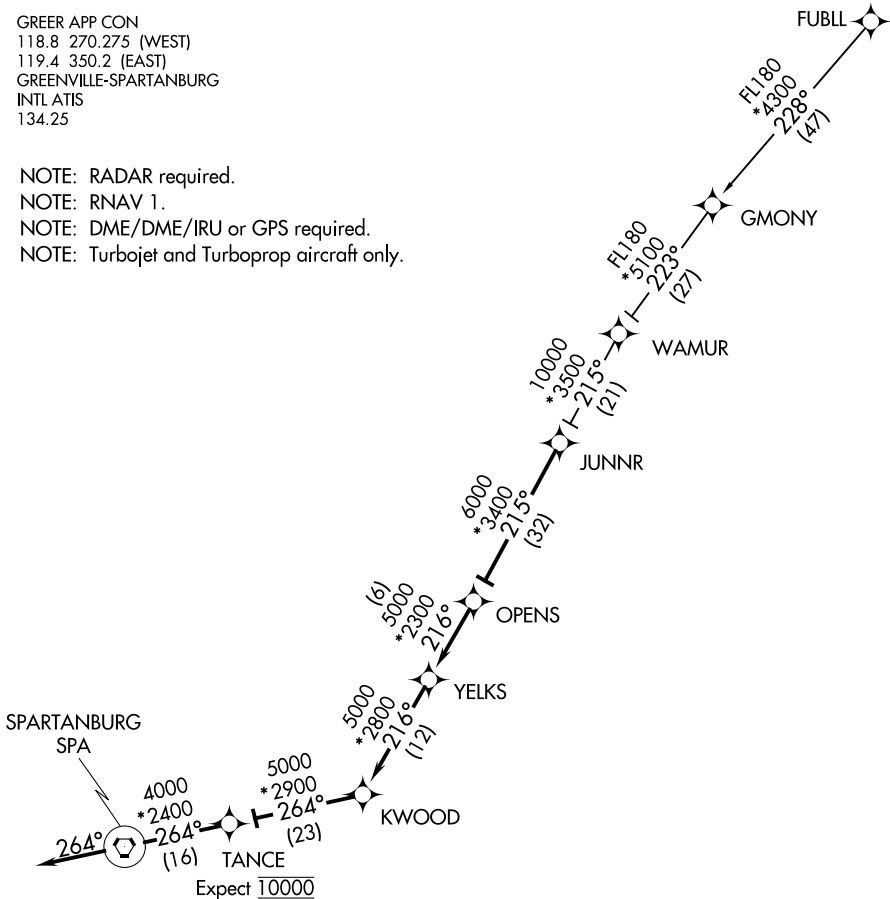
SE-2: 29 MAR 2018 to 26 APR 2018

JUNNR TWO ARRIVAL (RNAV)

GREER, SOUTH CAROLINA

GREER APP CON
118.8 270.275 (WEST)
119.4 350.2 (EAST)
GREENVILLE-SPARTANBURG
INTL ATIS
134.25

- NOTE: RADAR required.
- NOTE: RNAV 1.
- NOTE: DME/DME/IRU or GPS required.
- NOTE: Turbojet and Turboprop aircraft only.



Expect 10000

- GREENVILLE SPARTANBURG INTL
- GREENVILLE DOWNTOWN
- DONALDSON FIELD
- SPARTANBURG DOWNTOWN MEMORIAL

NOTE: Chart not to scale.

ARRIVAL ROUTE DESCRIPTION

FUBLL TRANSITION (FUBLL.JUNNR2):

From JUNNR on track 215° to OPENS, then on track 216° to YELKS, then on track 216° to KWOOD, then on track 264° to TANCE, then on track 264° to SPA VORTAC, then on heading 264° or as assigned by ATC. Expect RADAR vectors to final approach course.

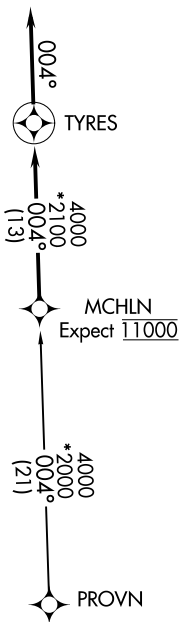
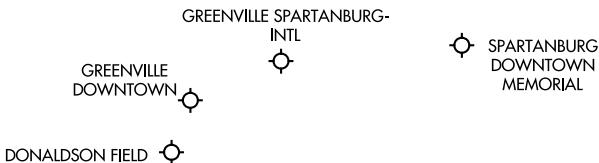
JUNNR TWO ARRIVAL (RNAV)

GREER, SOUTH CAROLINA

MCHLN ONE ARRIVAL (RNAV)

GREER, SOUTH CAROLINA

GREER APP CON
118.8 270.275 (WEST)
119.4 350.2 (EAST)
GREENVILLE-SPARTANBURG INTL ATIS
134.25



- NOTE: RADAR required.
- NOTE: RNAV 1.
- NOTE: DME/DME/IRU or GPS required.
- NOTE: Turbojet and Turboprop aircraft only.

NOTE: Chart not to scale.

ARRIVAL ROUTE DESCRIPTION

PROVN TRANSITION (PROVN.MCHLN1)

From MCHLN on track 004° to TYRES, then on heading 004°. Expect RADAR vectors to final approach course.

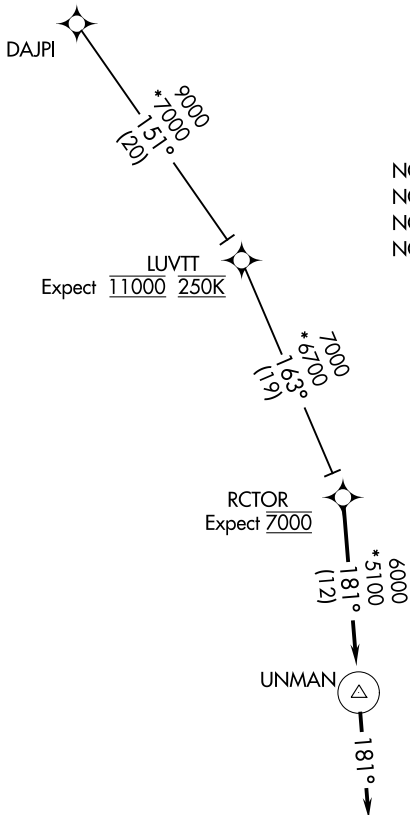
SE-2: 29 MAR 2018 to 26 APR 2018

SE-2: 29 MAR 2018 to 26 APR 2018

RCTOR ONE ARRIVAL (RNAV)

GREER, SOUTH CAROLINA

GREER APP CON
118.8 270.275 (WEST)
119.4 350.2 (EAST)
GREENVILLE-SPARTANBURG INTL ATIS
134.25



- NOTE: RADAR required.
- NOTE: RNAV 1.
- NOTE: DME/DME/IRU or GPS required.
- NOTE: Turbojet and Turboprop aircraft only.

Expect 11000 250K

RCTOR
Expect 7000

NOTE: Chart not to scale.

ARRIVAL ROUTE DESCRIPTION

DAJPI TRANSITION (DAJPI.RCTOR1)

From RCTOR on track 181° to UNMAN, then on heading 181°.
Expect RADAR vectors to final approach course.

SE-2: 29 MAR 2018 to 26 APR 2018

SE-2: 29 MAR 2018 to 26 APR 2018

WORKS ONE ARRIVAL (RNAV)
(WORKS.WORXS1) 05JAN17

(WORKS.WORXS1) 17005
WORKS ONE ARRIVAL (RNAV)

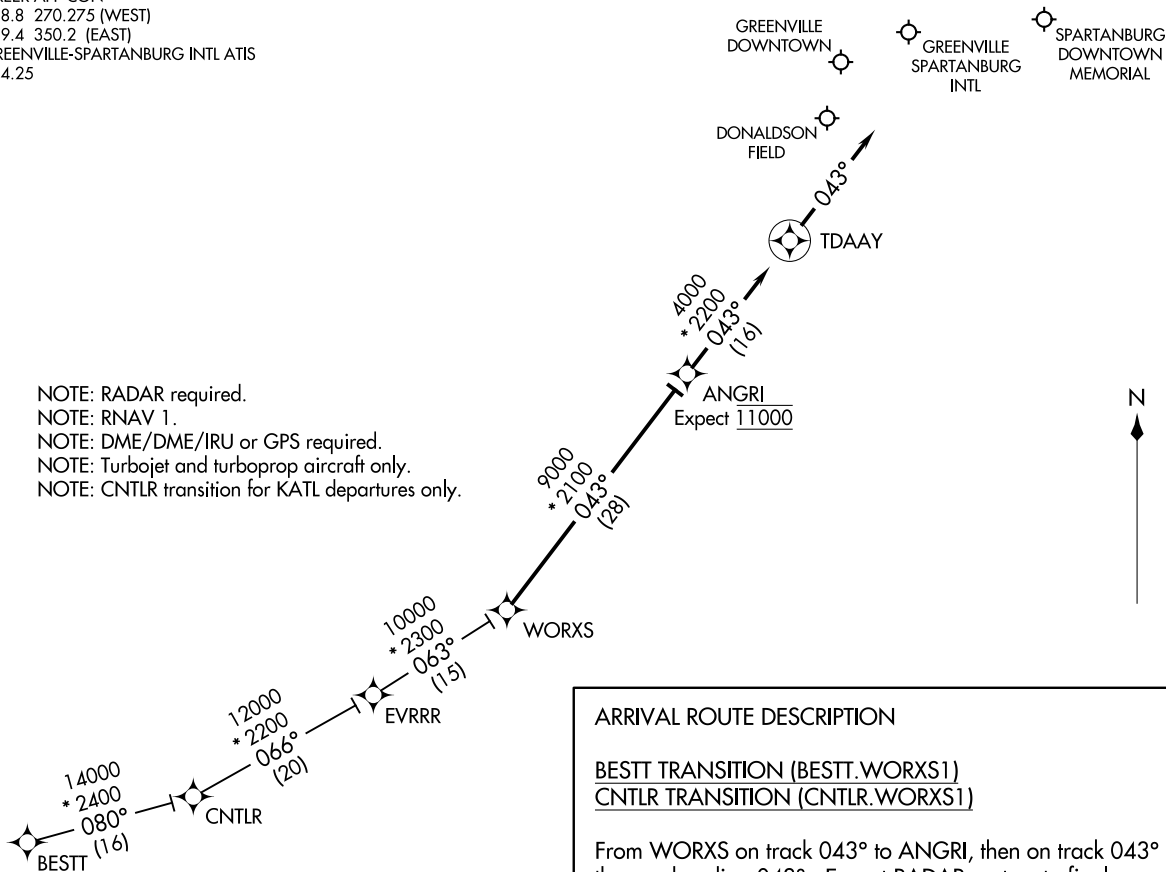
ST-5124 (FAA)

GREER, SOUTH CAROLINA

GREER, SOUTH CAROLINA

GREER APP CON
118.8 270.275 (WEST)
119.4 350.2 (EAST)
GREENVILLE-SPARTANBURG INTL ATIS
134.25

NOTE: RADAR required.
NOTE: RNAV 1.
NOTE: DME/DME/IRU or GPS required.
NOTE: Turbojet and turboprop aircraft only.
NOTE: CNTLR transition for KATL departures only.



ARRIVAL ROUTE DESCRIPTION

BESTT TRANSITION (BESTT.WORXS1)
CNTLR TRANSITION (CNTLR.WORXS1)

From WORXS on track 043° to ANGRI, then on track 043° to TDAAY, then on heading 043°. Expect RADAR vectors to final approach course.

NOTE: Chart not to scale.