

WAAS CH <b>56308</b> <b>W16A</b>	APP CRS <b>158°</b>	Rwy Idg TDZE Apt Elev	<b>5001</b> <b>1069</b> <b>1069</b>
--	------------------------	-----------------------------	---

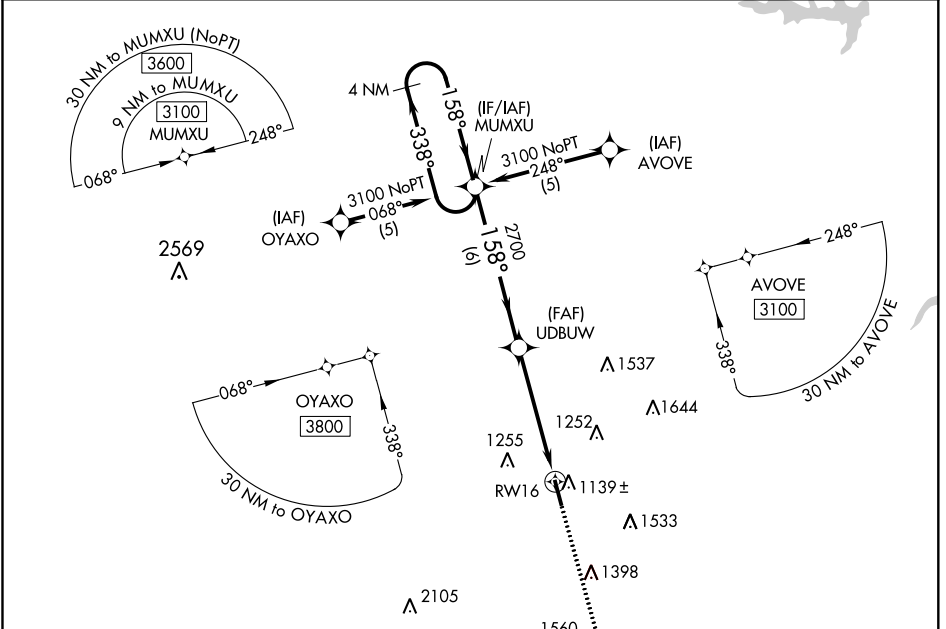
# RNAV (GPS) RWY 16

GUTHRIE-EDMOND RGNL (GOK)

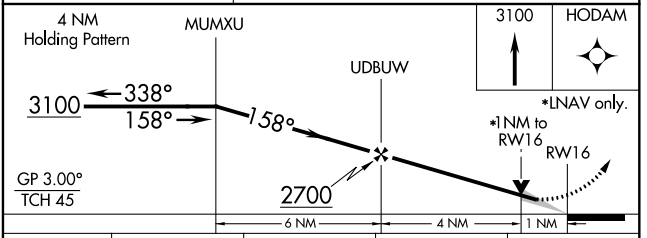
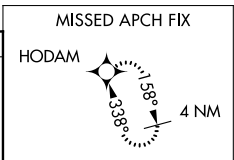
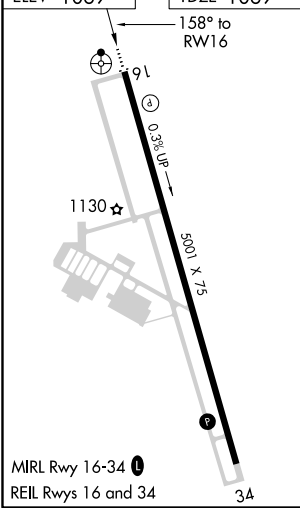
**⚠** DME/DME RNP-0.3 NA. VDP NA when using Will Rogers World altimeter setting. When local altimeter setting not received, use Will Rogers World altimeter setting and increase DA/MDA 100 feet and LPV all Cats visibility ¼ mile.

**ODALS** MISSED APPROACH: Climb to 3100 direct HODAM and hold.

ASOS <b>133,975</b>	OKE CITY APP CON <b>124.2 336.4</b>	UNICOM <b>122.8 (CTAF)</b>
------------------------	--	-------------------------------



ELEV 1069	TDZE 1069
-----------	-----------



CATEGORY	A	B	C	D
LPV DA	1319-1	250 (300-1)		NA
LNAV MDA	1420-1	351 (400-1)		NA
CIRCLING	1540-1	471 (500-1)		NA

SC-1, 05 NOV 2020 to 03 DEC 2020

SC-1, 05 NOV 2020 to 03 DEC 2020

WAAS CH <b>56607</b> <b>W34A</b>	APP CRS <b>338°</b>	Rwy Idg TDZE Apt Elev	<b>5001</b> <b>1069</b> <b>1069</b>
--	------------------------	-----------------------------	---

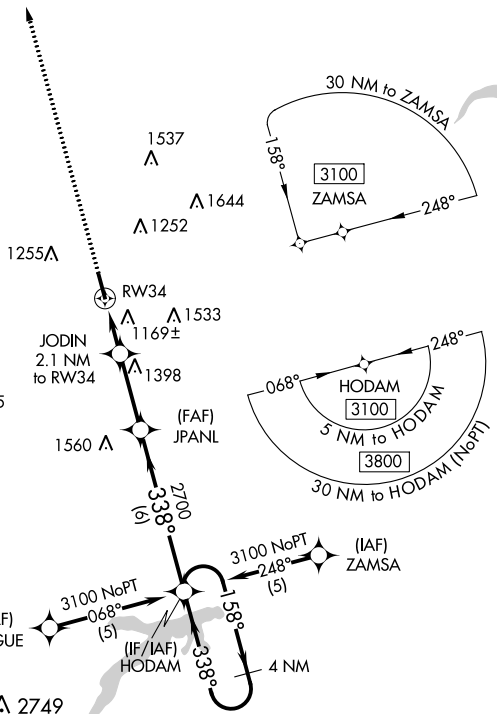
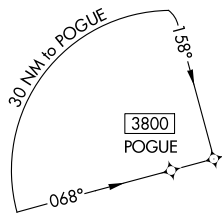
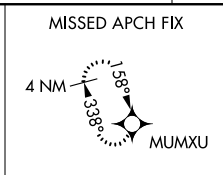
# RNAV (GPS) RWY 34

GUTHRIE-EDMOND RGNL (GOK)

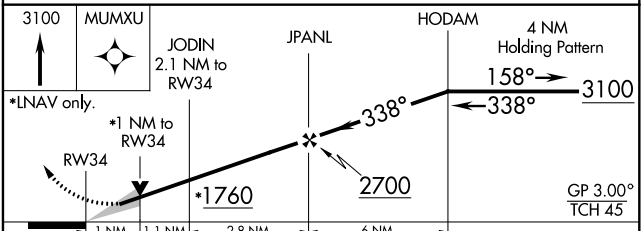
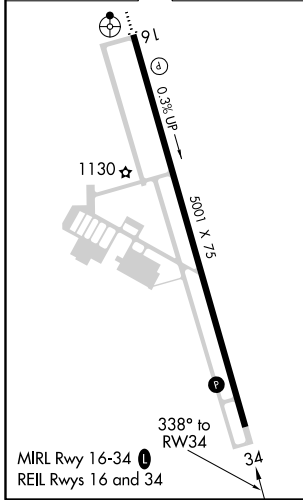
**▽** DME/DME RNP-0.3 NA. VDP NA when using Will Rogers World altimeter setting. When local altimeter setting not received, use Will Rogers World altimeter setting and increase DA/MDA 100 feet and LPV all Cats visibility ¼ mile.

**▲** MISSED APPROACH: Climb to 3100 direct MUMXU and hold.

ASOS <b>133.975</b>	OKE CITY APP CON <b>124.2 336.4</b>	UNICOM <b>122.8</b> (CTAF) <b>1</b>
------------------------	--	--



ELEV 1069	TDZE 1069
-----------	-----------



CATEGORY	A	B	C	D
LPV DA	1319-1	250 (300-1)		NA
LNAV MDA	1420-1	351 (400-1)		NA
CIRCLING	1540-1	471 (500-1)		NA