

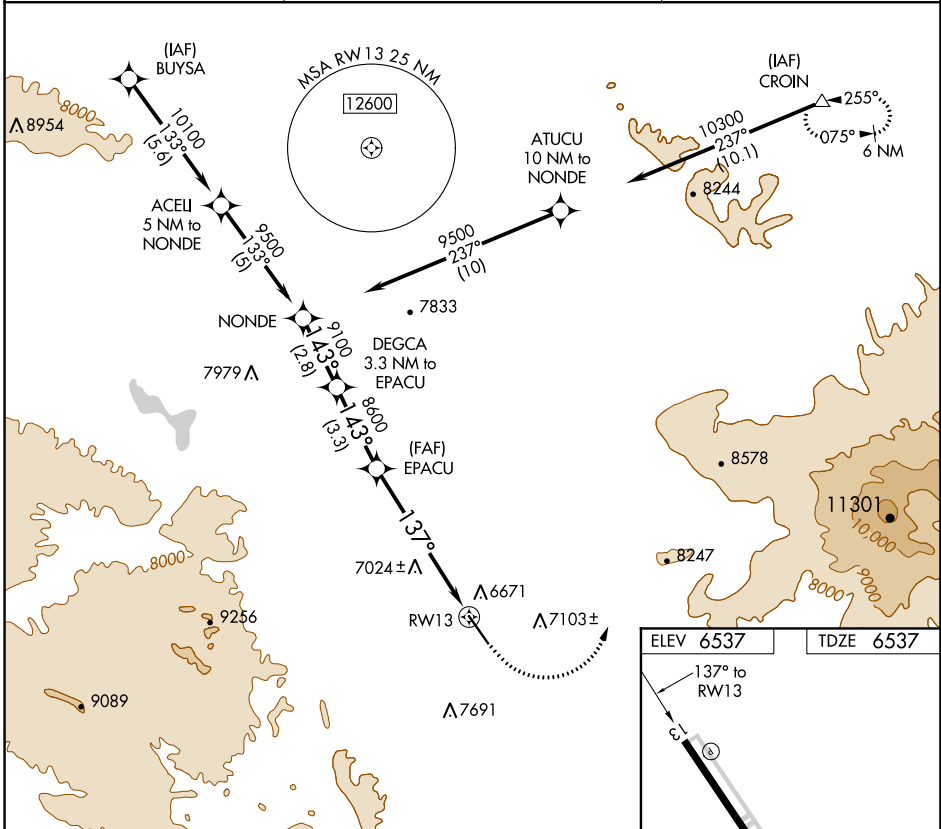
APP CRS	Rwy Idg	7172
137°	TDZE	6537
	Apt Elev	6537

RNAV (GPS) RWY 13

GRANTS-MILAN MUNI (GNT)

RNP APCH.	MISSED APPROACH: Climb to 8000, then climbing left turn to 10400 direct CROIN WP and hold.
<p>▼ NA</p> <p>If local altimeter setting not received, procedure NA. Rwy 13 helicopter visibility reduction below 3/4 SM NA.</p>	

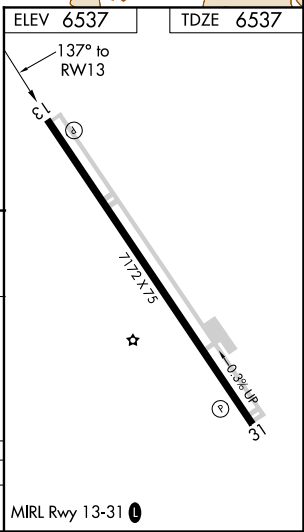
AWOS-3PT 118.3	ALBUQUERQUE CENTER 124.325 288.25	UNICOM 122.8 (CTAF)
--------------------------	---	-------------------------------



SW-1, 02 DEC 2021 to 30 DEC 2021

SW-1, 02 DEC 2021 to 30 DEC 2021

NONDE	DEGCA 3.3 NM to EPACU	EPACU	RWY13	CROIN
9500	9100	8600		
143°	137°	137°		
2.8 NM	3.3 NM	3.7 NM	2.5 NM	
Procedure Turn NA		8000 10400 CROIN		
Procedure Turn NA		TCH 40 2.5 NM to RWY13		
CATEGORY	A	B	C	D
LNAV MDA	7380-1 843 (900-1)	7380-1 1/4 843 (900-1 1/4)	7380-2 1/2 843 (900-2 1/2)	NA



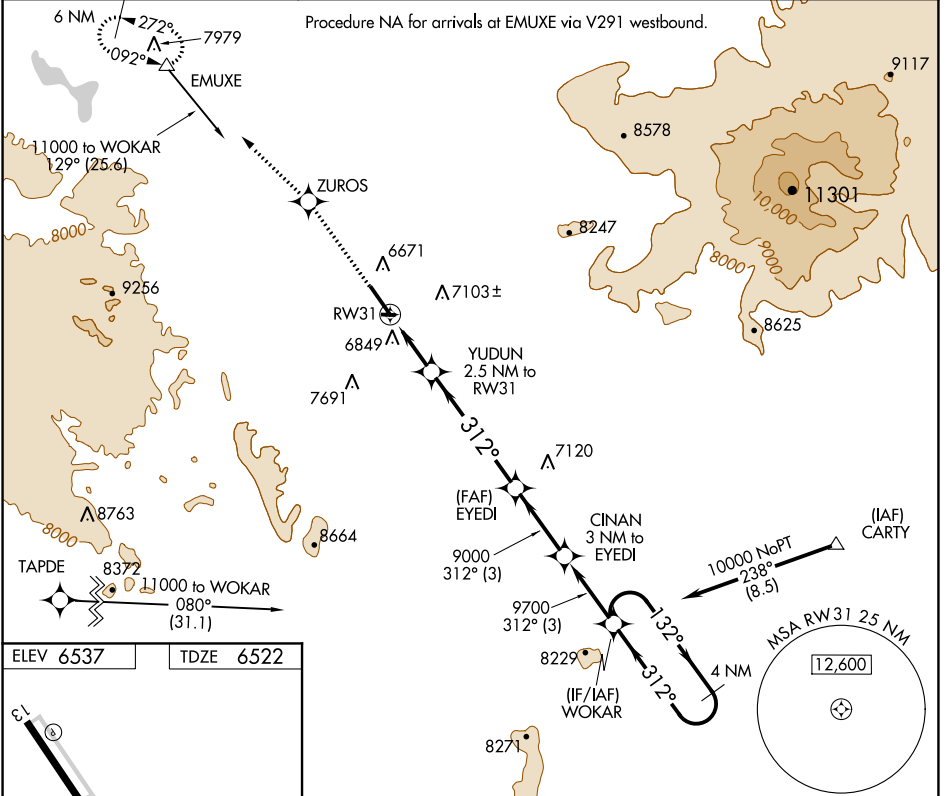
APP CRS 312°	Rwy Idg 7172
	TDZE 6522
	Apt Elev 6537

RNAV (GPS) RWY 31

GRANTS-MILAN MUNI (GNT)

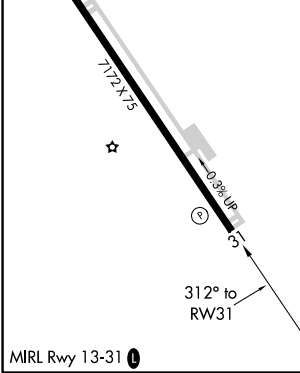
GPS or RNP-0.3 required. DME/DME RNP-0.3 NA.	MISSED APPROACH: Climb to 11000 direct ZUROS WP and left turn via 302° track to EMUXE WP and hold.
NA Circling not authorized east of Rwys 13-31.	

AWOS-3PT 118.3	ALBUQUERQUE CENTER 124.325 288.25	UNICOM 122.8 (CTAF)
--------------------------	---	-------------------------------



SW-1, 02 DEC 2021 to 30 DEC 2021

SW-1, 02 DEC 2021 to 30 DEC 2021



11000	ZUROS	EMUXE	4 NM Holding Pattern	
			CINAN 3 NM to EYEDI	WOKAR
	1.7 NM to RW31	YUDUN 2.5 NM to RW31	EYEDI	WOKAR
		3.00° TCH 40	9700	10000
	1.7	0.8	5.1 NM	3 NM
CATEGORY	A	B	C	D
RNAV MDA	7100-1	578 (600-1)	7100-1½ 578 (600-1½)	NA
CIRCLING	7200-1 663 (700-1)	7480-1¼ 943 (1000-1¼)	8000-3 1463 (1500-3)	NA