

GRAND JUNCTION SEVEN DEPARTURE

ATIS
118.55
GND CON
121.7 257.8
GRAND JUNCTION TOWER*
118.1 257.8
DENVER DEP CON*
119.7 317.4
UNICOM
122.95

TOP ALTITUDE:
6000

MEEKER
115.2 EKR
Chan 99

SQUAT
N39°18.64'
W108°13.36'
L-9
12000

RED TABLE
113.0 DBL
Chan 77

GRAND JUNCTION
112.4 JNC
Chan 71
N39°03.57'-W108°47.55'

PACES
N39°09.95'
W108°16.73'
L-9
13000

HONKR
N39°01.47'
W108°25.90'
11000

DIRDY
N38°55.80'
W107°30.91'
L-9, H-3

BRICK
N38°44.99'
W108°17.36'
L-9

NOTE: BRICK and DIRDY TRANSITIONS:
DME required.

TAKEOFF MINIMUMS

Rwy 4: NA - Obstacles.

Rwy 22: NA - Obstacles, facility reception (JNC VOR/DME).

Rwy 11: Standard with minimum climb of 300' per NM to 9300.

Rwy 29: Standard with minimum climb of 300' per NM to 8300.

NOTE: Chart not to scale.

DEPARTURE ROUTE DESCRIPTION

TAKEOFF RUNWAY 11: Climb heading 112° to 6000, then climbing right turn direct JNC VOR/DME, thence. . . .

TAKEOFF RUNWAY 29: Climb heading 292° to 6000, then climbing left turn direct JNC VOR/DME, thence. . . .

. . . . on transition/route.

BRICK TRANSITION (JNC7.BRICK): From over JNC VOR/DME via JNC R-113 to BRICK/JNC 30 DME.

DIRDY TRANSITION (JNC7.DIRDY): From over JNC VOR/DME via JNC R-082 to DIRDY INT/JNC 60 DME.

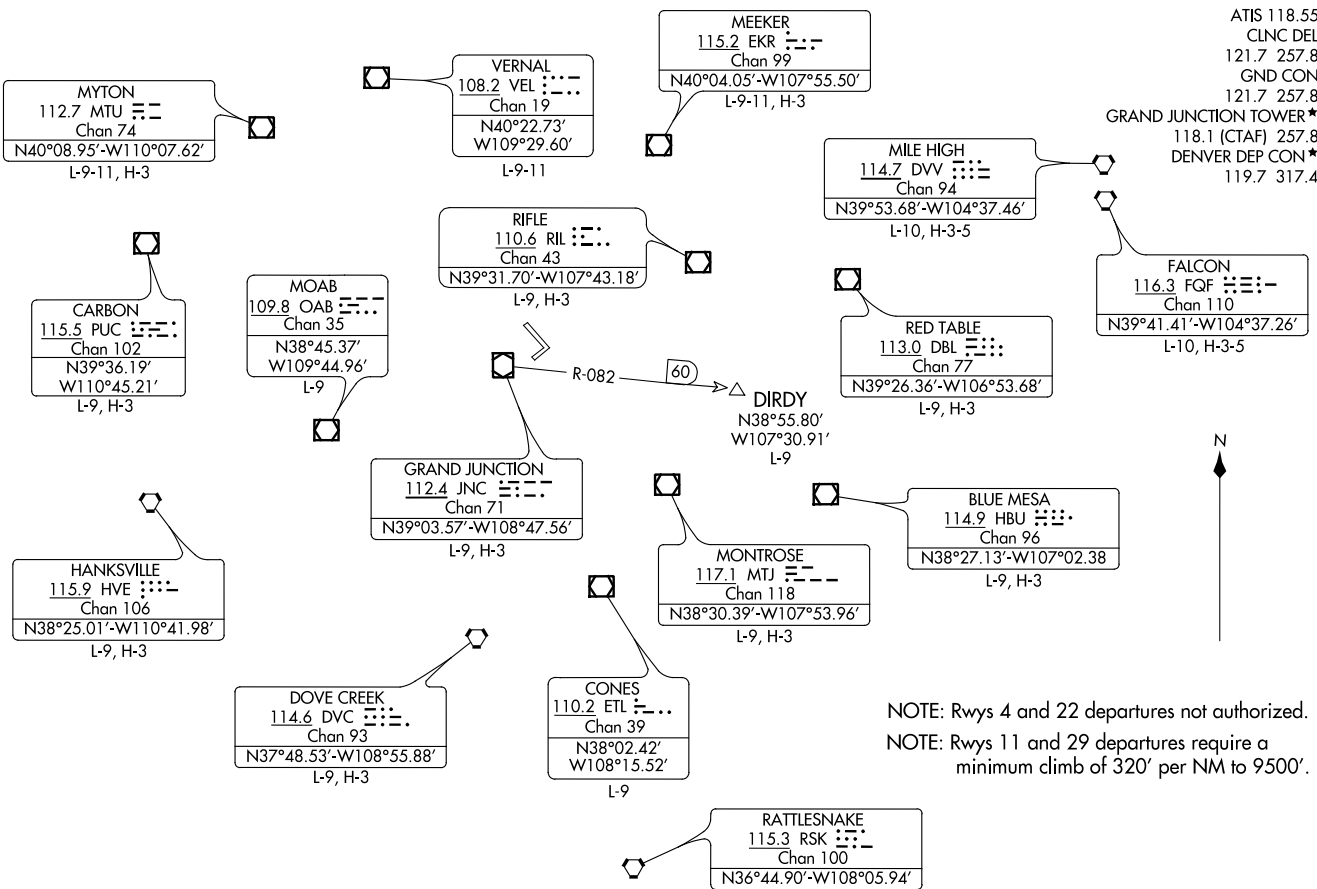
PACES TRANSITION (JNC7.PACES): From over JNC VOR/DME via JNC R-060 to PACES INT/JNC 25 DME.

SQUAT TRANSITION (JNC7.SQUAT): From over JNC VOR/DME via JNC R-045 to SQUAT INT/JNC 31 DME.

GRAND JUNCTION SEVEN DEPARTURE

SW-1, 26 MAR 2020 to 23 APR 2020

SW-1, 26 MAR 2020 to 23 APR 2020



(NARRATIVE ON FOLLOWING PAGE)

NOTE: Chart not to scale.



DEPARTURE ROUTE DESCRIPTION

Fly assigned heading for vectors to assigned fix/route. Maintain 14000 or assigned lower altitude. Expect filed altitude 10 minutes after departure.

LOST COMMUNICATIONS: If no transmissions are received within 1 minute after departure, Runway 11: Climbing right turn direct to JNC VOR/DME; Runway 29: Climb to 6000' then climbing left turn direct to JNC VOR/DME. Aircraft departing JNC R-221 clockwise JNC R-060, depart JNC VOR/DME on course. All other aircraft climb in JNC VOR/DME holding pattern (hold SW, left turns, 075° inbound) to cross JNC VOR/DME at or above: R-061 clockwise R-130 9500'; R-131 clockwise R-220 10500'.

SW-1, 26 MAR 2020 to 23 APR 2020

SW-1, 26 MAR 2020 to 23 APR 2020

(NOKX11.NOKXI) 16035

NOKXI ONE DEPARTURE (RNAV)

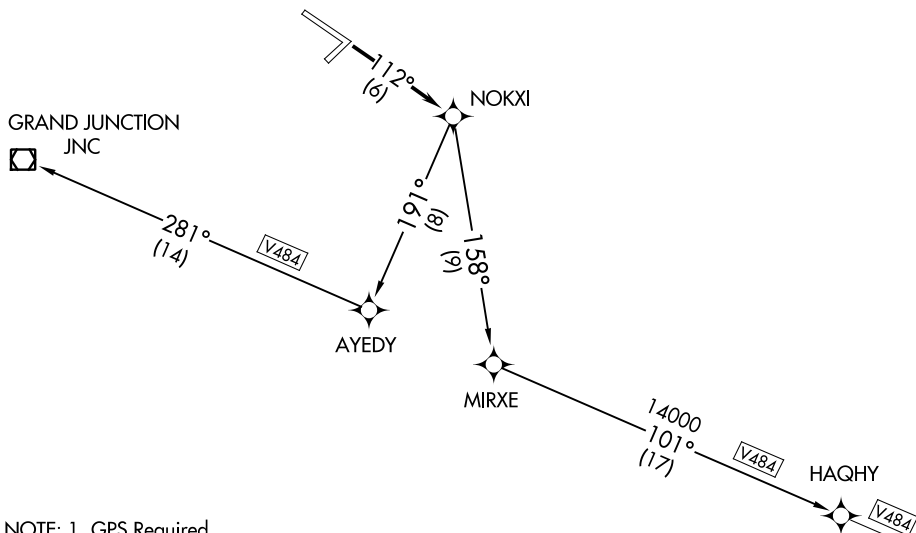
AL-634 (FAA)

GRAND JUNCTION RGNL (GJT)

GRAND JUNCTION, COLORADO

GRAND JUNCTION TOWER *
118.1 257.8

DENVER DEP CON *
119.7 317.4



NOTE: 1. GPS Required.
2. RNAV 1

TAKEOFF MINIMUMS:

Rwy 4, 22, 29: NA.

Rwy 11: GRAND JUNCTION TRANSITION: 2300-3 or standard with a minimum climb of 250' per NM from takeoff to 8000'. HAQHY TRANSITION: 5500-3 or standard with a minimum climb of 280' per NM from take-off to 11,000.

GRAND JUNCTION TRANSITION: Do not exceed 200K until AYEDY WP, cross JNC VOR/DME at MEA/MCA for direction of flight.

NOTE: Chart not to scale



DEPARTURE ROUTE DESCRIPTION

TAKEOFF RUNWAY 11: Climb via 112° course to NOKXI WP.

GRAND JUNCTION TRANSITION (NOKX11.JNC)

HAQHY TRANSITION (NOKX11.HAQHY)

NOKXI ONE DEPARTURE (RNAV)

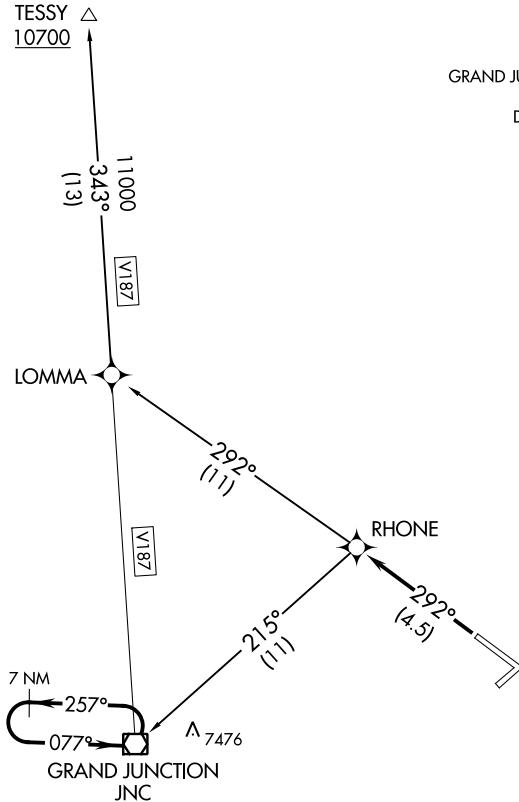
(NOKX11.NOKXI) 15JUN00

GRAND JUNCTION, COLORADO
GRAND JUNCTION RGNL (GJT)

SW-1, 26 MAR 2020 to 23 APR 2020

SW-1, 26 MAR 2020 to 23 APR 2020

ATIS 118.55
 GND CON 121.7 257.8
 GRAND JUNCTION TOWER * 118.1 257.8
 DENVER DEP CON * 119.7 317.4
 UNICOM 122.95



NOTE: GPS required.
 NOTE: RNAV 1

TAKEOFF MINIMUMS

Rwy 4, 11, 22: NA.
 Rwy 29: GRAND JUNCTION TRANSITION: 2700-2 or standard with a minimum climb of 280' per NM from take-off to 8000'
 TESSY TRANSITION: 2700-2 or standard with a minimum climb of 220' per NM from LOMMA WP to TESSY INT or 210' per NM from take-off to 10700'.



DEPARTURE ROUTE DESCRIPTION

TAKEOFF RUNWAY 29: Climb via 292° course to RHONE WP.

GRAND JUNCTION TRANSITION (RHONE2.JNC): Aircraft departing JNC VORTAC R-221 CW R-060 depart on course. All other aircraft climb in JNC VORTAC holding pattern to cross JNC VORTAC at or above: R-061 CW R-130 9500, R-131 CW R-220 10500, before proceeding en route.

TESSY TRANSITION (RHONE2.TESSY)