

WAAS CH 86502 W11A	APP CRS 107°	Rwy ldg TDZE Apt Elev	4001 145 145
--	------------------------	-----------------------------	---

RNAV (GPS) RWY 11

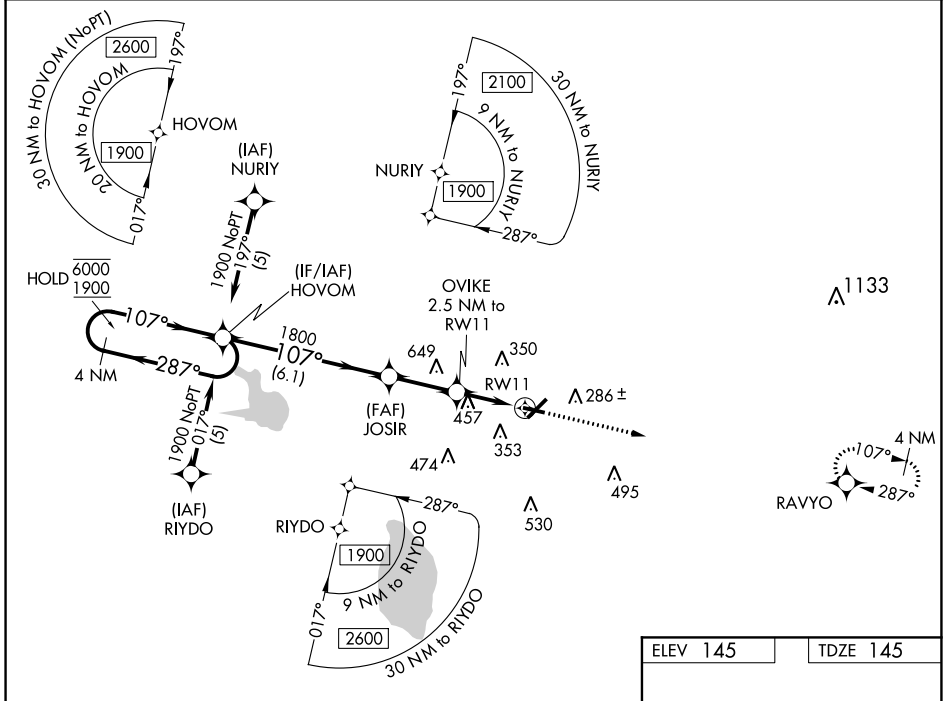
WINTER HAVEN RGNL (GIF)

RNP APCH-GPS

⚠ Rwy 11 helicopter visibility reduction below 1 SM NA. For uncompensated Baro-VNAV systems, LNAV/VNAV NA below -15°C or above 54°C. Straight-in and Circling Rwy 11 NA at night. When local altimeter setting not received, use Barlow altimeter setting and increase all DA/MDAs 20 feet. Baro-VNAV NA when using Barlow altimeter setting.

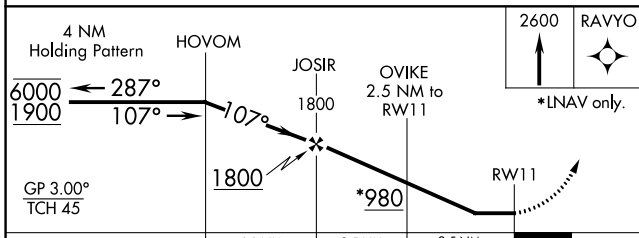
MISSED APPROACH:
Climb to 2600 direct RAVYO and hold.

ASOS 133.675	TAMPA APP CON 120.65 290.3	CLNC DEL (GCO) 121.725	UNICOM 123.05 (CTAF) 0
------------------------	--------------------------------------	----------------------------------	----------------------------------

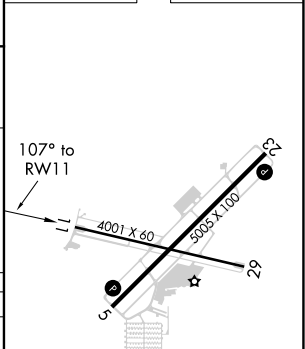


SE-3, 27 JAN 2022 to 24 FEB 2022

SE-3, 27 JAN 2022 to 24 FEB 2022



ELEV 145	TDZE 145
----------	----------



CATEGORY	A	B	C	D
LPV DA	395-1 250 (300-1)			
LNAV/VNAV DA	647-1¾ 502 (600-1¾)			
LNAV MDA	760-1 615 (700-1)	760-1¾ 615 (700-1¾)	760-2 615 (700-2)	760-2 615 (700-2)
CIRCLING	760-1¾ 615 (700-1¾)	820-2 675 (700-2)	960-2¾ 815 (900-2¾)	960-2¾ 815 (900-2¾)

REIL Rwy 5 and 23
REIL Rwy 11 and 29
MIRL Rwy 5-23 and 11-29

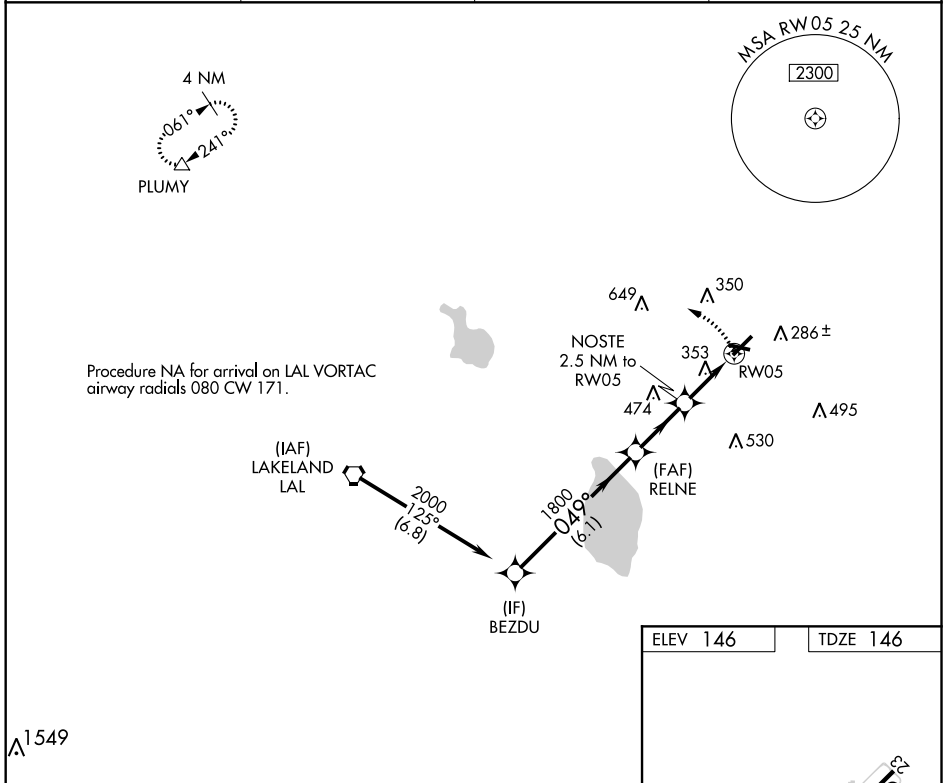
APP CRS	Rwy Idg	5005
049°	TDZE	146
	Apt Elev	146

RNAV (GPS) RWY 5

WINTER HAVEN RGNL (GIF)

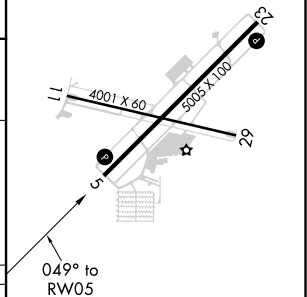
RNP APCH-GPS.		MISSED APPROACH: Climbing left turn to 2000 direct PLUMY and hold.	
<p>▼ Helicopter visibility reduction below 3/4 SM NA. When local altimeter setting not received, use Bartow altimeter setting and increase all MDA 20 feet, increase LNAV Cat C/D visibility 1/8 SM. VDP NA when using Bartow altimeter setting. Circling Rwy 11 NA at night.</p>			

ASOS 133.675	TAMPA APP CON 120.65 290.3	CLNC DEL (GCO) 121.725	UNICOM 123.05 (CTAF) ①
------------------------	--------------------------------------	----------------------------------	----------------------------------



ELEV 146	TDZE 146
----------	----------

BEZDU		RELNE		NOSTE		RW05	
2000		1800		980			
049°		3.04° TCH 50					
6.1 NM		2.5 NM		1 NM		1.5 NM	
CATEGORY	A	B	C	D			
LNAV MDA	660-1	514 (600-1)	660-1 ^{3/8}	514 (600-1 ^{3/8})			
CIRCLING	720-1	574 (600-1)	820-2 674 (700-2)	960-2 ^{3/4} 814 (900-2 ^{3/4})			



REIL Rwy 5 and 23
REIL Rwy 11 and 29 ①
MRL Rwy 5-23 and 11-29 ①

SE-3, 27 JAN 2022 to 24 FEB 2022

SE-3, 27 JAN 2022 to 24 FEB 2022

VORTAC LAL 116.0 Chan 107	APP CRS 071°	Rwy Idg TDZE Apt Elev	N/A N/A 145
---	------------------------	-----------------------------	--

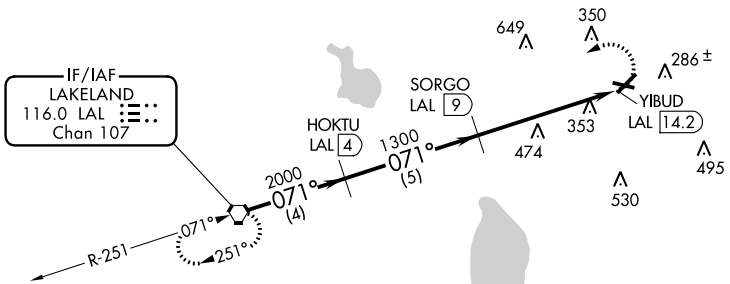
VOR-A
WINTER HAVEN RGNL (GIF)

DME required.

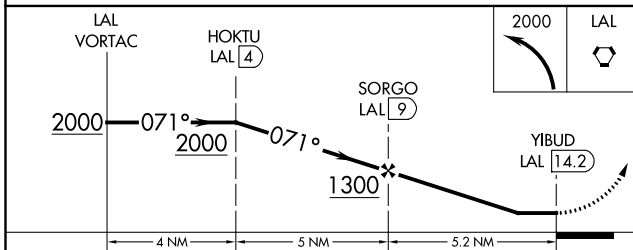
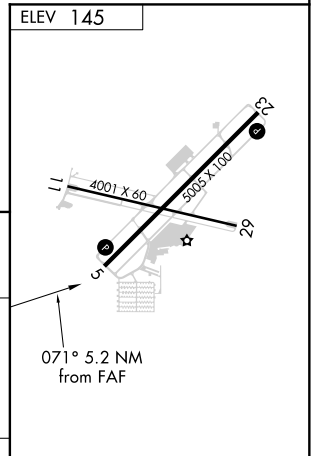
⚠ When local altimeter setting not received, use Bartow altimeter setting and increase all MDA 20 feet. Circling Rwy 11 NA at night.

MISSED APPROACH: Climbing left turn to 2000 direct LAL VORTAC and hold.

ASOS 133.675	TAMPA APP CON 120.65 290.3	CLNC DEL (GCO) 121.725	UNICOM 123.05 (CTAF) ①
------------------------	--------------------------------------	----------------------------------	----------------------------------



Procedure NA for arrivals on LAL VORTAC
airway radials 046 CW 139.



CATEGORY	A	B	C	D
CIRCLING	780-1 635 (700-1)		820-2 675 (700-2)	960-2¾ 815 (900-2¾)

REIL Rwy 5 and 23
REIL Rwy 11 and 29 ①
MRL Rwy 5-23 and 11-29 ①

SE-3, 27 JAN 2022 to 24 FEB 2022

SE-3, 27 JAN 2022 to 24 FEB 2022