

LOC/DME I-FYJ 109.55 Chan 32 (Y)	APP CRS 094°	Rwy Ldg TDZE Apt Elev	5000 14 20
---	------------------------	-----------------------------	---------------------------------------

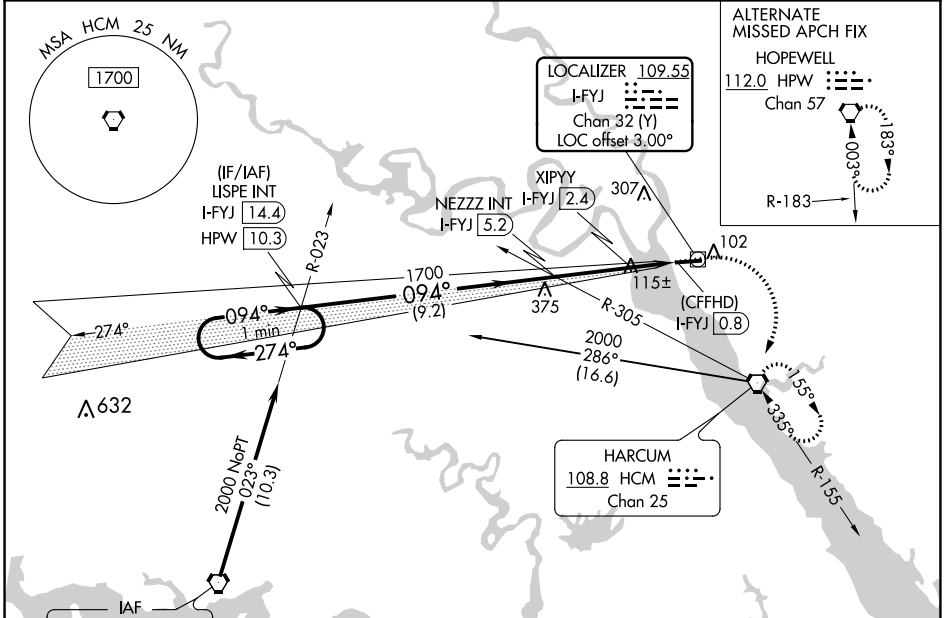
LOC RWY 10

MIDDLE PENINSULA RGNL (F'YJ)

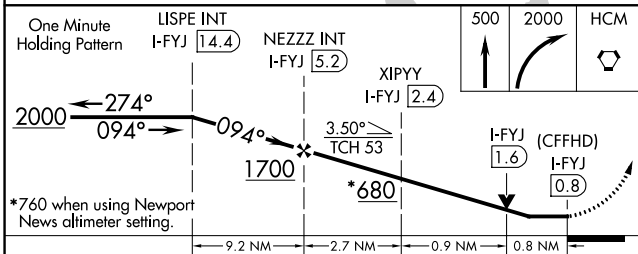
NA When local altimeter setting not received, use Newport News altimeter setting and increase all MDA 80 feet and increase S-10 Cat B and Circling Cat B visibility ¼ SM. VDP NA when using Newport News altimeter setting.

MISSED APPROACH: Climb to 500 then climbing right turn to 2000 direct HCM VORTAC and hold, continue climb-in-hold to 2000.

AWOS-3 132.825	POTOMAC APP CON 126.4 282.375	UNICOM 123.0 (CTAF) 0
--------------------------	---	---------------------------------



ELEV 20	TDZE 14
---------	---------



MIRL Rwy 10-28		REIL Rws 10 and 28	
FAF to MAP 4.4 NM			
Knots	60	90	120 150 180
Min:Sec	4:24	2:56	2:12 1:46 1:28

CATEGORY	A	B	C	D
S-10	680-1	666 (700-1)		NA
C CIRCLING	680-1	660 (700-1)		NA
XIPYY FIX MINIMUMS				
S-10	380-1	366 (400-1)		NA
C CIRCLING	480-1 460 (500-1)	620-1 600 (600-1)		NA

NE-3, 20 MAY 2021 to 17 JUN 2021

NE-3, 20 MAY 2021 to 17 JUN 2021

WAAS Ch 40317 W10A	APP CRS 097°	Rwy Idg TDZE Apt Elev	5000 14 20
--	------------------------	-----------------------------	---------------------------------------

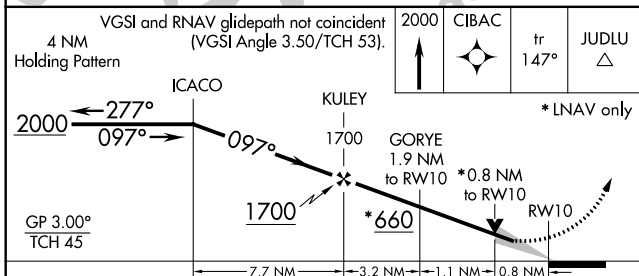
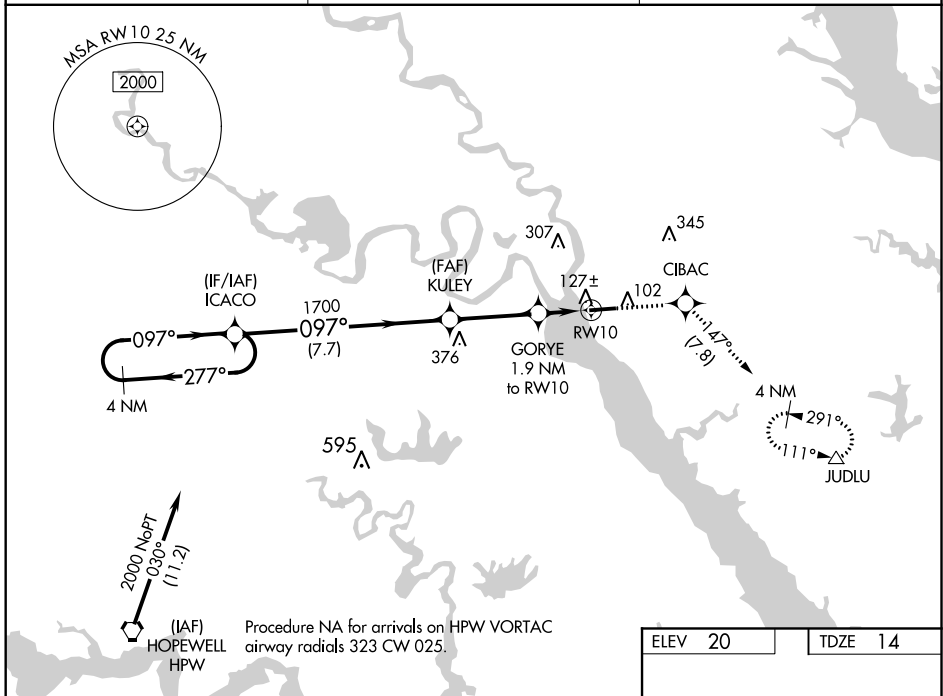
RNAV (GPS) RWY 10

MIDDLE PENINSULA RGNL (F'YJ)

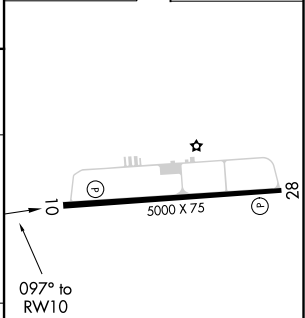
⚠ For uncompensated Baro-VNAV systems, LNAV/VNAV NA below -1.5°C (5°F) or above 54°C (130°F). Baro-VNAV and VDP NA when using Newport News altimeter setting. DME/DME RNP-0.3 NA. When local altimeter setting not received, use Newport News altimeter setting: increase LPV DA to 329 feet; increase LNAV/VNAV DA to 420 feet and Cats A/B visibility ¼ SM; increase all MDA 80 feet.

MISSED APPROACH: Climb to 2000 direct CIBAC and on track 147° to JUDLU and hold.

AWOS-3 132.825	POTOMAC APP CON 126.4 282.375	UNICOM 123.0 (CTAF) 0
--------------------------	---	---------------------------------



ELEV 20	TDZE 14
---------	---------



CATEGORY	A	B	C	D
LPV DA	264-1	250 (300-1)		NA
LNAV/VNAV DA	355-1¼	341 (400-1¼)		NA
LNAV MDA	380-1	366 (400-1)		NA
C CIRCLING	480-1 460 (500-1)	620-1 600 (600-1)		NA

MIRL Rwy 10-28 **0**
REIL Rwy 10 and 28 **0**

NE-3, 20 MAY 2021 to 17 JUN 2021

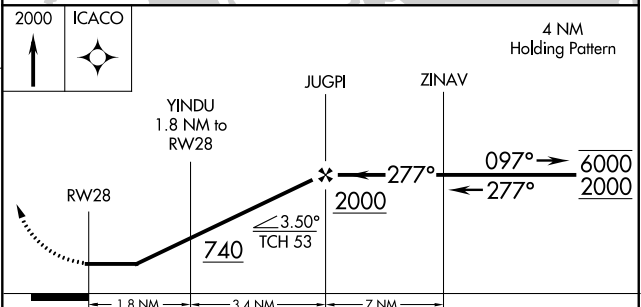
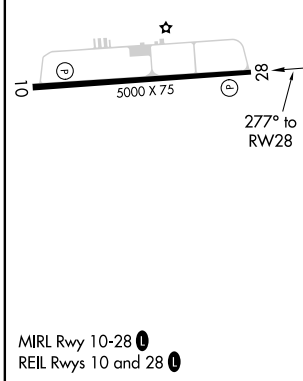
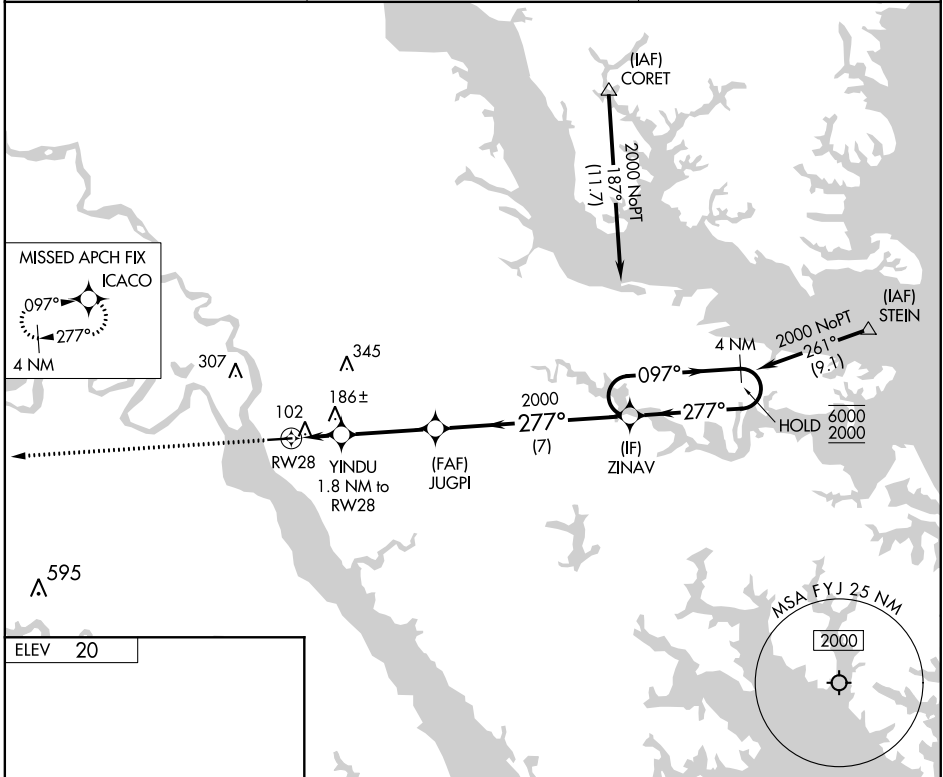
NE-3, 20 MAY 2021 to 17 JUN 2021

APP CRS 277°	Rwy Idg TDZE Apt Elev	N/A N/A 20
------------------------	-----------------------------	---------------------------------------

RNAV (GPS)-B

MIDDLE PENINSULA RGNL (F'YJ)

RNP APCH.		MISSED APPROACH: Climb to 2000 direct ICACO and hold.
AWOS-3 132.825	POTOMAC APP CON 126.4 282.375	UNICOM 123.0 (CTAF) 0



CATEGORY	A	B	C	D
CIRCLING	480-1 460 (500-1)	620-1 600 (600-1)	NA	

NE-3, 20 MAY 2021 to 17 JUN 2021

NE-3, 20 MAY 2021 to 17 JUN 2021

VORTAC HCM 108.8 Chan 25	APP CRS 337°	Rwy Idg TDZE Apt Elev	N/A N/A 20
--	------------------------	-----------------------------	---------------------------------------

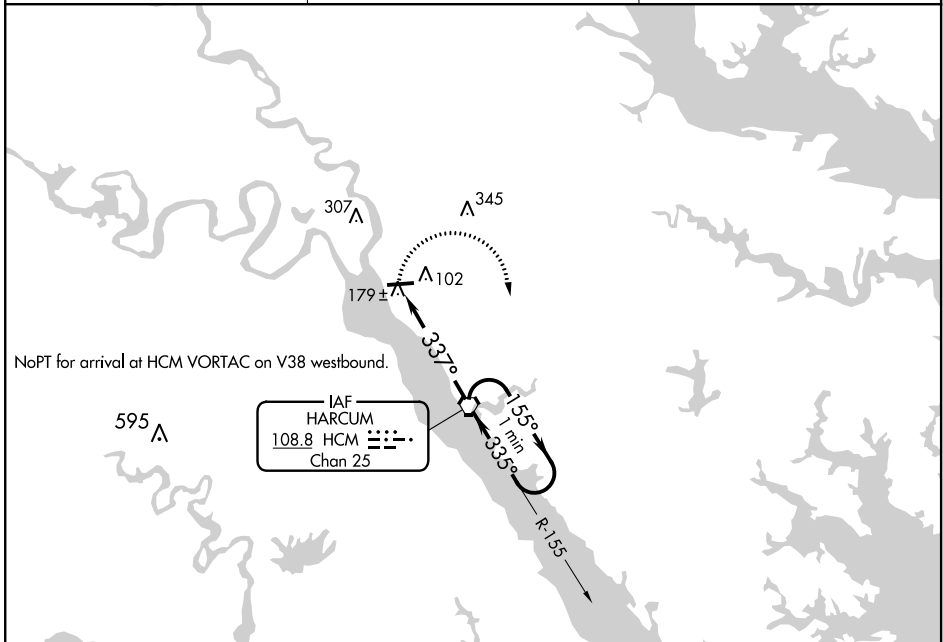
VOR-A

MIDDLE PENINSULA RGNL (F'YJ)

⚠ When local altimeter setting not received, use Newport News altimeter setting and increase all MDA 80 feet.

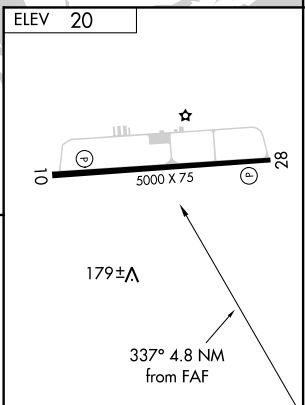
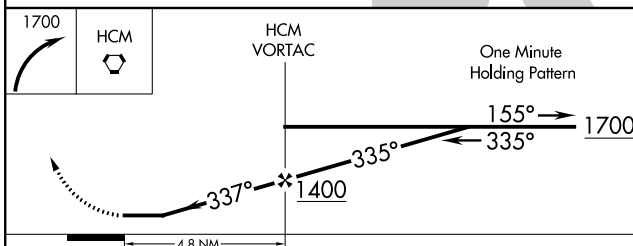
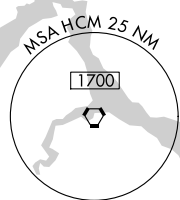
MISSED APPROACH: Climbing right turn to 1700 direct HCM VORTAC and hold.

AWOS-3 132.825	POTOMAC APP CON 126.4 282.375	UNICOM 123.0 (CTAF) 📞
--------------------------	---	--



NoPT for arrival at HCM VORTAC on V38 westbound.

IAF
HARCUM
108.8 HCM
Chan 25



MIRL Rwy 10-28 **📞**
REIL Rwys 10 and 28 **📞**

CATEGORY	A	B	C	D	FAF to MAP 4.8 NM					
	480-1 460 (500-1)	620-1 600 (600-1)	NA			Knots	60	90	120	150
📞 CIRCLING					Min:Sec	4:48	3:12	2:24	1:55	1:36

NE-3, 20 MAY 2021 to 17 JUN 2021

NE-3, 20 MAY 2021 to 17 JUN 2021