

WAAS CH <b>93723</b> <b>W01A</b>	APP CRS <b>008°</b>	Rwy Idg TDZE Apt Elev	<b>5000</b> <b>436</b> <b>436</b>
--	------------------------	-----------------------------	---

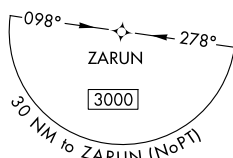
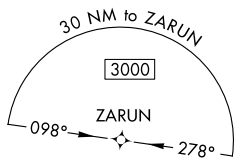
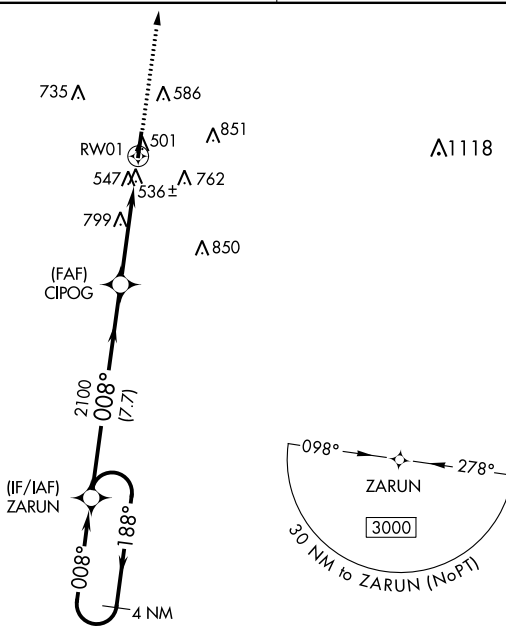
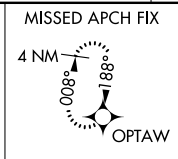
# RNAV (GPS) RWY 1

FAYETTE COUNTY (FYE)

**NA** Baro-VNAV NA when using Memphis Intl altimeter setting. For uncompensated Baro-VNAV systems, LNAV/VNAV NA below -15°C (5°F) or above 54°C (130°F). DME/DME RNP-0.3 NA. When local altimeter setting not received, use Memphis Intl altimeter setting and increase all DA 84 feet, all MDA 100 feet. Increase LPV all Cats visibility 1/8 mile, LNAV/VNAV all Cats 1/4 mile and LNAV Cat C 1/4 mile. Helicopter visibility reduction below 3/4 SM NA.

**MISSED APPROACH:**  
Climb to 3000 direct OPTAW and hold.

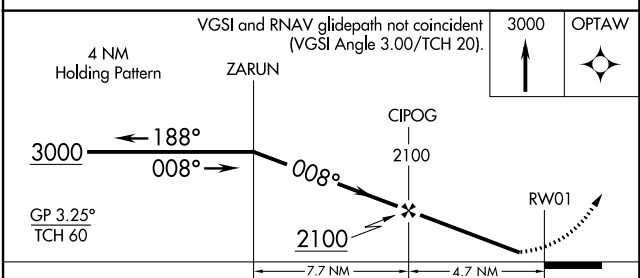
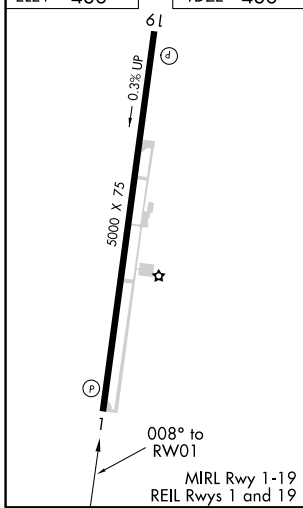
AWOS-3 <b>119.875</b>	MEMPHIS APP CON <b>125.8 338.3</b>	CTAF <b>122.9</b>
--------------------------	---------------------------------------	----------------------



SE-1, 04 JAN 2018 to 01 FEB 2018

SE-1, 04 JAN 2018 to 01 FEB 2018

ELEV <b>436</b>	TDZE <b>436</b>
-----------------	-----------------



CATEGORY	A	B	C	D
LPV DA		747-1	311 (400-1)	NA
LNAV/VNAV DA		809-1 1/8	373 (400-1 1/8)	NA
LNAV MDA	1060-1	624 (700-1)	1060-1 3/4 624 (700-1 1/4)	NA
CIRCLING	1060-1	624 (700-1)	1060-1 3/4 624 (700-1 1/4)	NA

WAAS CH <b>53624</b> <b>W19A</b>	APP CRS <b>188°</b>	Rwy Idg TDZE Apt Elev	<b>5000</b> <b>431</b> <b>436</b>
--	------------------------	-----------------------------	---

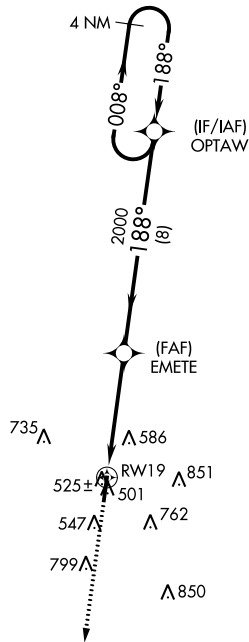
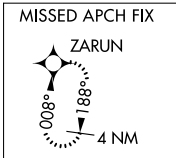
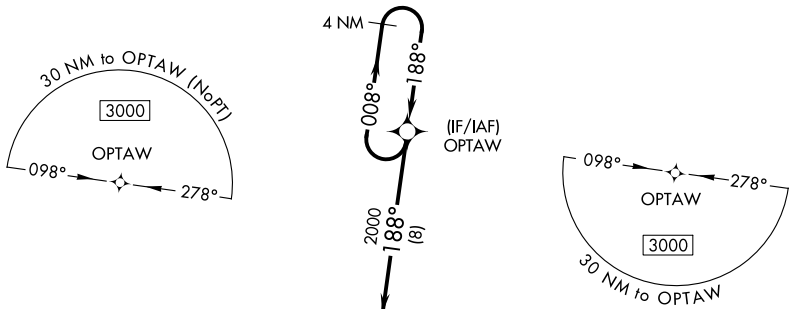
# RNAV (GPS) RWY 19

FAYETTE COUNTY (FYE)

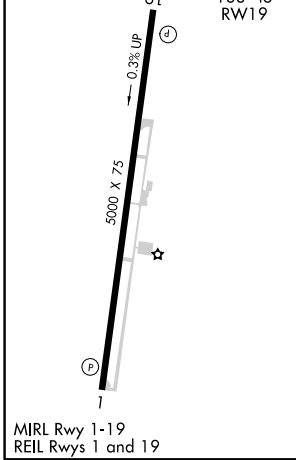
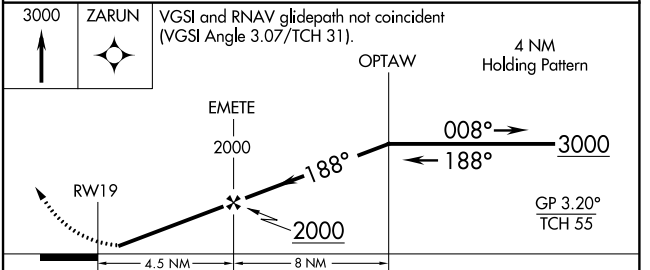
**NA** Baro-VNAV NA when using Memphis Intl altimeter setting. For uncompensated Baro-VNAV systems, LNAV/VNAV NA below -15°C (5°F) or above 54°C (130°F). DME/DME RNP-0.3 NA. When local altimeter setting not received, use Memphis Intl altimeter setting and increase all DA 84 feet, all MDA 100 feet. Increase LPV all Cats visibilities 1/8 mile, LNAV and Circling Cat C 3/8 mile. Helicopter visibility reduction below 3/4 SM NA.

**MISSED APPROACH:**  
Climb to 3000 direct ZARUN and hold.

AWOS-3 <b>119.875</b>	MEMPHIS APP CON <b>125.8 338.3</b>	CTAF <b>122.9</b>
--------------------------	---------------------------------------	----------------------



ELEV <b>436</b>	TDZE <b>431</b>
-----------------	-----------------



CATEGORY	A	B	C	D
LPV DA		721-1	290 (300-1)	NA
LNAV/VNAV DA		683-1	252 (300-1)	NA
LNAV MDA	880-1	449 (500-1)	880-1 3/8 449 (500-1 3/8)	NA
CIRCLING	900-1 464 (500-1)	920-1 484 (500-1)	920-1 1/2 484 (500-1 1/2)	NA

SE-1, 04 JAN 2018 to 01 FEB 2018

SE-1, 04 JAN 2018 to 01 FEB 2018