

WAAS CH <b>93723</b> <b>W01A</b>	APP CRS <b>008°</b>	Rwy Idg TDZE Apt Elev	<b>5000</b> <b>436</b> <b>436</b>
--	------------------------	-----------------------------	---

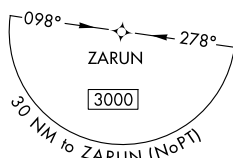
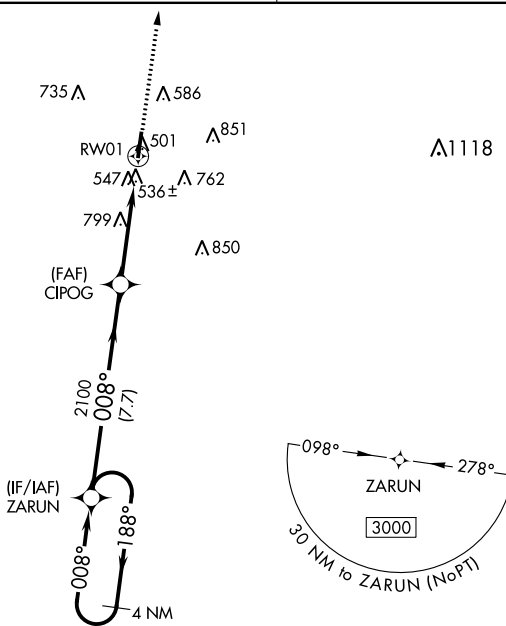
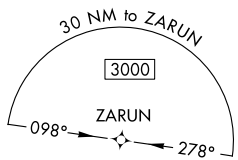
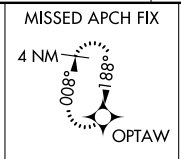
# RNAV (GPS) RWY 1

FAYETTE COUNTY (FYE)

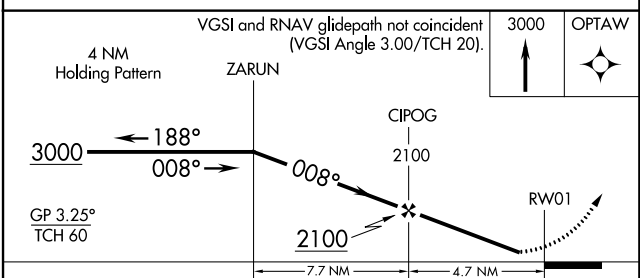
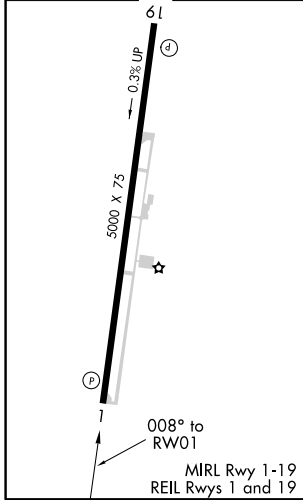
**NA** Baro-VNAV NA when using Memphis Intl altimeter setting. For uncompensated Baro-VNAV systems, LNAV/VNAV NA below -15°C (5°F) or above 54°C (130°F). DME/DME RNP-0.3 NA. When local altimeter setting not received, use Memphis Intl altimeter setting and increase all DA 84 feet, all MDA 100 feet. Increase LPV all Cats visibility 1/8 mile, LNAV/VNAV all Cats 1/4 mile and LNAV Cat C 1/4 mile. Helicopter visibility reduction below 3/4 SM NA.

**MISSED APPROACH:** Climb to 3000 direct OPTAW and hold.

AWOS-3 <b>119,875</b>	MEMPHIS APP CON <b>125.8 338.3</b>	CTAF <b>122.9</b>
--------------------------	---------------------------------------	----------------------



ELEV <b>436</b>	TDZE <b>436</b>
-----------------	-----------------



CATEGORY	A	B	C	D
LPV DA		747-1	311 (400-1)	NA
LNAV/VNAV DA		809-1 1/8	373 (400-1 1/8)	NA
LNAV MDA	1060-1	624 (700-1)	1060-1 3/4 624 (700-1 1/4)	NA
CIRCLING	1060-1	624 (700-1)	1060-1 3/4 624 (700-1 1/4)	NA

SE-1, 24 MAY 2018 to 21 JUN 2018

SE-1, 24 MAY 2018 to 21 JUN 2018

WAAS CH <b>53624</b> <b>W19A</b>	APP CRS <b>188°</b>	Rwy Idg TDZE Apt Elev	<b>5000</b> <b>431</b> <b>436</b>
--	------------------------	-----------------------------	---

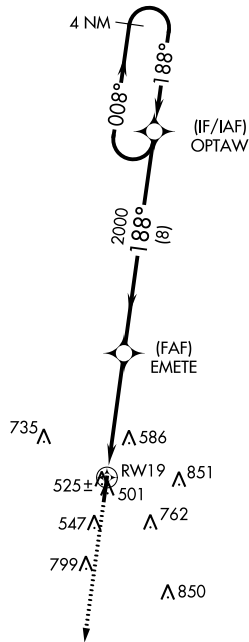
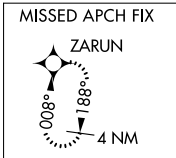
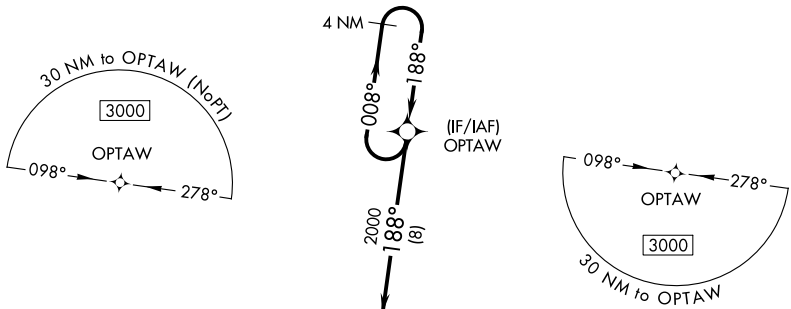
# RNAV (GPS) RWY 19

FAYETTE COUNTY (FYE)

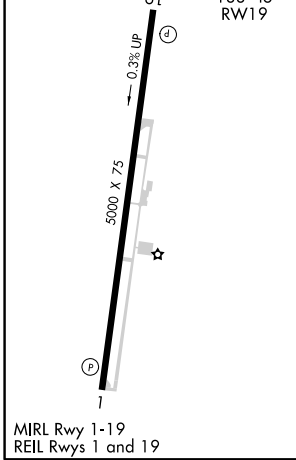
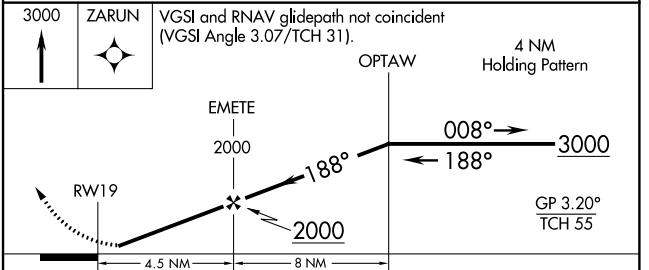
**NA** Baro-VNAV NA when using Memphis Intl altimeter setting. For uncompensated Baro-VNAV systems, LNAV/VNAV NA below -1.5°C (5°F) or above 54°C (130°F). DME/DME RNP-0.3 NA. When local altimeter setting not received, use Memphis Intl altimeter setting and increase all DA 84 feet, all MDA 100 feet. Increase LPV all Cats visibilities 1/8 mile, LNAV and Circling Cat C 1/2 mile. Helicopter visibility reduction below 3/4 SM NA.

**MISSED APPROACH:**  
Climb to 3000 direct ZARUN and hold.

AWOS-3 <b>119.875</b>	MEMPHIS APP CON <b>125.8 338.3</b>	CTAF <b>122.9</b>
--------------------------	---------------------------------------	----------------------



ELEV <b>436</b>	TDZE <b>431</b>
-----------------	-----------------



CATEGORY	A	B	C	D
LPV DA		721-1	290 (300-1)	NA
LNAV/VNAV DA		683-1	252 (300-1)	NA
LNAV MDA	880-1	449 (500-1)	880-1 3/8 449 (500-1 3/8)	NA
CIRCLING	900-1 464 (500-1)	920-1 484 (500-1)	920-1 1/2 484 (500-1 1/2)	NA

SE-1, 24 MAY 2018 to 21 JUN 2018

SE-1, 24 MAY 2018 to 21 JUN 2018

# TAKEOFF MINIMUMS, (OBSTACLE) DEPARTURE PROCEDURES, AND DIVERSE VECTOR AREA (RADAR VECTORS)

18088

## IFR TAKEOFF MINIMUMS AND (OBSTACLE) DEPARTURE PROCEDURES

### Civil Airports and Selected Military Airports

ALL USERS: Airports that have Departure Procedures (DPs) designed specifically to assist pilots in avoiding obstacles during the climb to the minimum enroute altitude, and/or airports that have civil IFR takeoff minimums other than standard, are listed below. Takeoff Minimums and Departure Procedures apply to all runways unless otherwise specified. An entry may also be listed that contains only Takeoff Obstacle Notes. Altitudes, unless otherwise indicated, are minimum altitudes in MSL.

DPs specifically designed for obstacle avoidance are referred to as Obstacle Departure Procedures (ODPs) and are textually described below, or published separately as a graphic procedure. If the ODP is published as a graphic procedure, its name will be listed below, and it can be found in either this volume (civil), or the applicable military volume, as appropriate. Users will recognize graphic obstacle DPs by the term "(OBSTACLE)" included in the procedure title; e.g., TETON TWO (OBSTACLE). If not specifically assigned an ODP, SID, or radar vector as part of an IFR clearance, an ODP may be required to be flown for obstacle clearance, even though not specifically stated in the IFR clearance. When doing so in this manner, ATC should be informed when the ODP being used contains a specified route to be flown, restrictions before turning, and/or altitude restrictions.

Some ODPs, which are established solely for obstacle avoidance, require a climb in visual conditions to cross the airport, a fix, or a NAVAID in a specified direction, at or above a specified altitude. These procedures are called Visual Climb Over Airport (VCOA). To ensure safe and efficient operations, the pilot must verbally request approval from ATC to fly the VCOA when requesting their IFR clearance.

At some locations where an ODP has been established, a diverse vector area (DVA) may be created to allow radar vectors to be used in lieu of an ODP. DVA information will state that headings will be as assigned by ATC and climb gradients, when applicable, will be published immediately following the specified departure procedure.

Graphic DPs designed by ATC to standardize traffic flows, ensure aircraft separation and enhance capacity are referred to as "Standard Instrument Departures (SIDs)". SIDs also provide obstacle clearance and are published under the appropriate airport section. ATC clearance must be received prior to flying a SID.

CIVIL USERS NOTE: Title 14 Code of Federal Regulations Part 91 prescribes standard takeoff rules and establishes takeoff minimums for certain operators as follows: (1) For aircraft, other than helicopters, having two engines or less – one statute mile visibility. (2) For aircraft having more than two engines – one-half statute mile visibility. (3) For helicopters – one-half statute mile visibility. These standard minima apply in the absence of any different minima listed below.

MILITARY USERS NOTE: Civil (nonstandard) takeoff minima are published below. For military takeoff minima, refer to appropriate service directives.

NAME	TAKEOFF MINIMUMS	NAME	TAKEOFF MINIMUMS
------	------------------	------	------------------

#### ASHLAND, KY

ASHLAND RGNL (DWU)  
TAKEOFF MINIMUMS AND (OBSTACLE)  
DEPARTURE PROCEDURES  
AMDT 5 11293 (FAA)

TAKEOFF MINIMUMS: **Rwy 10**, 600-2¼ or std. with a min. climb of 430' per NM to 1300.

DEPARTURE PROCEDURE: **Rwy 10**, climb heading 103° to 1300 before proceeding on course. **Rwy 28**, climb heading 283° to 1300 before turning right.

TAKEOFF OBSTACLE NOTES: **Rwy 10**, trees beginning 274' from DER, 381' left of centerline, up to 100' AGL/939' MSL. Trees beginning 292' from DER, 184' right of centerline, up to 100' AGL/625' MSL. Buildings beginning 451' from DER, 508' right of centerline, up to 30' AGL/582' MSL. Poles beginning 642' from DER, 383' right of centerline, up to 40' AGL/586' MSL. Vehicles on roadway 474' from DER, 451' right of centerline, up to 15' AGL/569' MSL. Towers beginning 2.3 NM from DER, 162' right of centerline, up to 440' AGL/1038' MSL. **Rwy 28**, trees beginning 468' from DER, 367' left of centerline, up to 100' AGL/621' MSL. Trees beginning 775' from DER, 37' right of centerline, up to 100' AGL/595' MSL.

#### ATHENS, TN

MCMINN COUNTY (MMI)  
TAKEOFF MINIMUMS AND (OBSTACLE)  
DEPARTURE PROCEDURES  
AMDT 1 10154 (FAA)

TAKEOFF MINIMUMS: **Rwy 2**, 400–2¼ or std. w/ min. climb of 230' per NM to 1800 or 1700 - 3 for climb in visual conditions. **Rwy 20**, std. w/ min. climb of 280' per NM to 4900 or 1700-3 for climb in visual conditions.

DEPARTURE PROCEDURE: **Rwy 2**, climb heading 022° to 2200 before turning right or for climb in visual conditions: cross McMinn County airport at or above 2400 before proceeding on course. **Rwy 20**, climb heading 202° to 1900 before turning left or for climb in visual conditions: cross McMinn County airport at or above 2400 before proceeding on course.

TAKEOFF OBSTACLE NOTES: **Rwy 2**, trees beginning 420' from DER, 444' right of centerline, up to 69' AGL/988' MSL. Trees beginning 742' from DER, 1464' left of centerline, up to 102' AGL/1061' MSL. **Rwy 20**, trees and terrain beginning 43' from DER, 166' right of centerline, up to 49' AGL/868' MSL. Trees beginning 283' from DER, 407' left of centerline, up to 45' AGL/864' MSL.

24 MAY 2018 to 21 JUN 2018

24 MAY 2018 to 21 JUN 2018

# TAKEOFF MINIMUMS, (OBSTACLE) DEPARTURE PROCEDURES, AND DIVERSE VECTOR AREA (RADAR VECTORS)

18088

SE-1

# TAKEOFF MINIMUMS, (OBSTACLE) DEPARTURE PROCEDURES, AND DIVERSE VECTOR AREA (RADAR VECTORS)

18088

## BARDSTOWN, KY

### SAMUELS FIELD (BRY)

TAKEOFF MINIMUMS AND (OBSTACLE)  
DEPARTURE PROCEDURES  
AMDT 2 18088 (FAA)

TAKEOFF OBSTACLE NOTES: **Rwy 3**, traverse way, fence beginning 3' from DER, 250' left of centerline, up to 674' MSL. Tree 332' from DER, 561' left of centerline, 66' AGL/694' MSL. Trees beginning 332' from DER, 394' left of centerline, up to 64' AGL/695' MSL. Trees beginning 362' from DER, 364' left of centerline, up to 63' AGL/706' MSL. Trees beginning 385' from DER, 367' left of centerline, up to 84' AGL/709' MSL. Trees beginning 387' from DER, 372' left of centerline, up to 86' AGL/718' MSL. Tree 437' from DER, 574' right of centerline, 72' AGL/702' MSL. Trees beginning 446' from DER, 319' left of centerline, up to 86' AGL/728' MSL. Trees beginning 470' from DER, 429' right of centerline, up to 85' AGL/711' MSL. Trees beginning 556' from DER, 417' right of centerline, up to 84' AGL/713' MSL. Trees beginning 569' from DER, 365' right of centerline, up to 103' AGL/720' MSL. Trees beginning 722' from DER, 417' right of centerline, up to 94' AGL/724' MSL. Trees beginning 749' from DER, 405' right of centerline, up to 95' AGL/729' MSL. Tree 2340' from DER, 372' left of centerline, 74' AGL/733' MSL. Tree 2359' from DER, 319' left of centerline, 78' AGL/737' MSL. Trees beginning 3127' from DER, 799' left of centerline, up to 92' AGL/752' MSL. Trees beginning 3373' from DER, 615' left of centerline, up to 100' AGL/758' MSL. **Rwy 21**, catenary 4' from DER, 422' left of centerline, 28' AGL/650' MSL. Terrain 42' from DER, 228' right of centerline, 639' MSL. Fence 90' from DER, 247' right of centerline, 6' AGL/642' MSL. Fence 107' from DER, 246' right of centerline, 8' AGL/643' MSL. Catenary, transmission line, tree beginning 122' from DER, 214' left of centerline, up to 35' AGL/657' MSL. Trees beginning 338' from DER, 347' right of centerline, up to 71' AGL/689' MSL. Trees beginning 421' from DER, 67' left of centerline, up to 61' AGL/660' MSL. Trees beginning 463' from DER, 30' right of centerline, up to 85' AGL/695' MSL. Trees beginning 575' from DER, 127' left of centerline, up to 78' AGL/674' MSL. Trees beginning 1025' from DER, 4' left of centerline, up to 73' AGL/684' MSL. Tree, pole beginning 1355' from DER, 36' left of centerline, up to 60' AGL/688' MSL. Tree 1604' from DER, 87' right of centerline, 79' AGL/698' MSL. Trees beginning 1621' from DER, 71' right of centerline, up to 76' AGL/700' MSL. Trees beginning 1651' from DER, 59' right of centerline, up to 82' AGL/712' MSL. Tree 1725' from DER, 391' left of centerline, 73' AGL/700' MSL. Trees beginning 1805' from DER, 93' left of centerline, up to 91' AGL/715' MSL. Trees beginning 2555' from DER, 94' left of centerline, up to 101' AGL/734' MSL. Trees beginning 2742' from DER, 65' right of centerline, up to 88' AGL/722' MSL.

## BOLIVAR, TN

### WILLIAM L. WHITEHURST FIELD (M08)

TAKEOFF MINIMUMS AND (OBSTACLE)  
DEPARTURE PROCEDURES  
TAKEOFF MINIMUMS: **Rwy 1**, 200-1. **Rwy 19**, 300-1.

## BOWLING GREEN, KY

### BOWLING GREEN-WARREN COUNTY RGNL (BWG)

TAKEOFF MINIMUMS AND (OBSTACLE)  
DEPARTURE PROCEDURES  
AMDT 2 10322 (FAA)

TAKEOFF MINIMUMS: **Rwy 3**, 300-2 or std. w/ a min. climb of 238' per NM to 900.

TAKEOFF OBSTACLE NOTES: **Rwy 3**, rising terrain and trees beginning 130' from DER, left and right of centerline, up to 100' AGL/615' MSL. Antenna and pole 1579' from DER, 354' left of centerline, up to 35' AGL/565' MSL. Towers beginning 1.3 NM from DER, 1429' left of centerline, up to 265' AGL/765' MSL. **Rwy 12**, fence beginning 197' from DER, left and right of centerline, up to 8' AGL/541' MSL. Vehicle on road beginning 243' from DER, left and right of centerline, up to 15' AGL/548' MSL. Trees beginning 279' from DER, 132' right of centerline, up to 60' AGL/610' MSL. Tree 857' from DER, 327' left of centerline, 100' AGL/649' MSL. **Rwy 21**, tree 113' from DER, 499' left of centerline, 70' AGL/630' MSL. Tower 1202' from DER, 401' left of centerline, 47' AGL/581' MSL. Tree 2510' from DER, 911' right of centerline, 100' AGL/649' MSL. Obstruction light on tank 4690' from DER, 1637' left of centerline, 150' AGL/691' MSL. **Rwy 30**, vehicle on road beginning 31' from DER, 209' left of centerline, up to 15' AGL/564' MSL. Pole 916' from DER, 407' left of centerline, 40' AGL/584' MSL. Building 1135' from DER, 618' left of centerline, 33' AGL/584' MSL. Tree 1689' from DER, 357' right of centerline, 100' AGL/649' MSL. Tree 1853' from DER, 271' left of centerline, 40' AGL/582' MSL.

## BRISTOL/JOHNSON/KINGSPOUR, TN TRI-CITIES (TRI)

TAKEOFF MINIMUMS AND (OBSTACLE)  
DEPARTURE PROCEDURES  
AMDT 7A 17313

DEPARTURE PROCEDURE: Use TRICITIES  
DEPARTURE.

## CAMDEN, TN

### BENTON COUNTY (0M4)

TAKEOFF MINIMUMS AND (OBSTACLE)  
DEPARTURE PROCEDURES  
AMDT 1 09239 (FAA)

DEPARTURE PROCEDURE: **Rwy 4**, climb heading 037° to 900 before turning left.

TAKEOFF OBSTACLE NOTES: **Rwy 4**, trees beginning 539' from DER, 25' right of centerline, up to 100' AGL/534' MSL. Trees beginning 1067' from DER, 57' left of centerline, up to 100' AGL/549' MSL. Utility poles beginning 951' from DER, 325' left of centerline, 40' AGL/501' MSL. **Rwy 22**, trees beginning 1158' from DER, 597' left of centerline, up to 100' AGL/619' MSL. Trees beginning 1753' from DER, 925' right of centerline, up to 100' AGL/549' MSL.

24 MAY 2018 to 21 JUN 2018

24 MAY 2018 to 21 JUN 2018

# TAKEOFF MINIMUMS, (OBSTACLE) DEPARTURE PROCEDURES, AND DIVERSE VECTOR AREA (RADAR VECTORS)

18088

SE-1

# TAKEOFF MINIMUMS, (OBSTACLE) DEPARTURE PROCEDURES, AND DIVERSE VECTOR AREA (RADAR VECTORS)

18088

## CAMPBELL AAF (KHOP),

FORT CAMPBELL, KY

TAKEOFF MINIMUMS AND (OBSTACLE)

DEPARTURE PROCEDURES

08129

TAKEOFF OBSTACLE NOTES: **Rwy 18**, Touchdown reflector 85' from DER, 109' left of centerline, 4' AGL/564' MSL. Touchdown reflector 104' from DER, 109' right of centerline, 4' AGL/563' MSL. **Rwy 23**, Tree line 1029' from DER, 541' left of centerline, 60' AGL/590' MSL. **Rwy 36**, Tree line 1199' from DER, 591' left of centerline, 60' AGL/607' MSL.

## CAMPBELLSVILLE, KY

TAYLOR COUNTY (AAS)

TAKEOFF MINIMUMS AND (OBSTACLE)

DEPARTURE PROCEDURES

ORIG 11237 (FAA)

TAKEOFF OBSTACLE NOTES: **Rwy 5**, trees and terrain beginning 30' from DER, 34' left and right of centerline, up to 100' AGL/1059' MSL. **Rwy 23**, trees and terrain beginning 70' from DER, 174' left and right of centerline, up to 100' AGL/999' MSL.

## CENTERVILLE, TN

CENTERVILLE MUNI (GHM)

TAKEOFF MINIMUMS AND (OBSTACLE)

DEPARTURE PROCEDURES

AMDT 1 15344 (FAA)

TAKEOFF OBSTACLE NOTES: **Rwy 2**, vehicle on road 8' from DER, 156' left of centerline, 17' AGL/770' MSL, up sloping ground 131' from DER, 383' left of centerline, up to 785 MSL. Building 1375' from DER, 621' right of centerline, 25' AGL/815' MSL. Building 440' from DER, 528' left of centerline, 25' AGL/810' MSL. Trees beginning 47' from DER, 433' right of centerline, up to 60' AGL/821' MSL. Trees beginning 451' from DER, 346' right of centerline, up to 76' AGL/839' MSL. Trees beginning 716' from DER, 328' right of centerline, up to 81' AGL/860' MSL. Trees beginning 726' from DER, 540' right of centerline, up to 67' AGL/860' MSL. Trees beginning 745' from DER, 413' left of centerline, up to 62' AGL/862' MSL. Trees beginning 1174' from DER, 577' right of centerline, up to 85' AGL/875' MSL. Trees beginning 1438' from DER, 844' right of centerline, up to 87' AGL/887' MSL. Trees beginning 1955' from DER, 869' right of centerline, up to 93' AGL/893' MSL. Trees beginning 861' from DER, left and right of centerline, up to 43' AGL/856' MSL. Power poles beginning 1390' from DER, 61' right of centerline, 28' AGL/808' MSL. **Rwy20**, power pole 37' from DER, 453' left of centerline, 35' AGL/793' MSL. Trees beginning 103' from DER, 508' left of centerline, up to 54' AGL/820' MSL. Vehicle on road 442' from DER, 56' right of centerline, 17' AGL/777' MSL. Vehicle on road 467' from DER, 127' left of centerline, 17' AGL/779' MSL. Power pole 436' from DER, 286' left of centerline, 50' AGL/811' MSL. Trees beginning 398' from DER, 402' left of centerline, up to 73' AGL/849' MSL. Trees beginning 524' from DER, 522' right of centerline, up to 70' AGL/833' MSL. Trees beginning 583' from DER, 321' right of centerline, up to 62' AGL/827' MSL. Trees beginning 608' from DER, 193' right of centerline, up to 57' AGL/818' MSL. Trees beginning 678' from DER, 567' right of centerline, up to 76' AGL/840' MSL. Tree beginning 694' from DER, 602' right of centerline, up to 86' AGL/850' MSL. Trees beginning 468' from DER, left and right of centerline, up to 44' AGL/839' MSL.

## CHATTANOOGA, TN

LOVELL FIELD (CHA)

TAKEOFF MINIMUMS AND (OBSTACLE)

DEPARTURE PROCEDURES

AMDT 11 10098 (FAA)

TAKEOFF MINIMUMS: **Rwy 15**, 300-2¼ or std. with a min. climb of 360' per NM to 1100. **Rwy 33**, 500-3 or std. with a min. climb of 330' per NM to 1300.

DEPARTURE PROCEDURE: **Rwy 2**, climb via heading 019° to 2400 before turning. **Rwy 15**, climb via heading 147° to 1400 before turning. **Rwy 20**, climb via heading 199° to 2200 before turning. **Rwy 33**, climbing right turn heading 020° to 2900 before proceeding on course.

TAKEOFF OBSTACLE NOTES: **Rwy 2**, train 868' from DER, 596' right of centerline, 26' AGL/695' MSL. Trees beginning 937' from DER, 284' right of centerline, up to 80' AGL/738' MSL. Trees beginning 1466' from DER, 283' left of centerline, up to 80' AGL/744' MSL. **Rwy 15**, trees beginning 343' from DER, 197' right of centerline, up to 91' AGL/770' MSL. Vehicles on roadway, 489' from DER, on centerline, 17' AGL/687' MSL. Trees beginning 537' from DER, 242' left of centerline, up to 97' AGL/767' MSL. Poles 1011' from DER, 292' right of centerline, up to 130' AGL/809' MSL. Tree 4960' from DER, 1054' left of centerline, up to 103' AGL/917' MSL. Poles beginning 1.01 NM from DER, 1012' left of centerline, up to 86' AGL/946' MSL. Trees beginning 1.18 NM from DER, 351' right of centerline, up to 92' AGL/935' MSL. Trees beginning 1.83 NM from DER, 1883' left of centerline, up to 110' AGL/952' MSL. **Rwy 20**, Tree 641' from DER, 538' left of centerline, 50' AGL/712' MSL. Trees beginning 2924' from DER, 910' right of centerline, up to 100' AGL/782' MSL. **Rwy 33**, trees beginning 236' from DER, 519' right of centerline, 50' AGL/719' MSL. Trees beginning 468' from DER, 264' left of centerline, 50' AGL/669' MSL. Trees beginning 478' from DER, 281' right of centerline, 60' AGL/717' MSL. Trees beginning 2424' from DER, 375' right of centerline, 60' AGL/787' MSL. Tree 4482' from DER, 262' right of centerline, 100' AGL/800' MSL. Tree 1.09 NM from DER, 1371' left of centerline, 100' AGL/845' MSL. Trees beginning 1.19 NM from DER, 3644' right of centerline, 100' AGL/947' MSL. Tree 1.53 NM from DER, 2884' right of centerline, up to 100' AGL/935' MSL. Tree 1.75 NM from DER, 2483' left of centerline, up to 100' AGL/972' MSL.

24 MAY 2018 to 21 JUN 2018

24 MAY 2018 to 21 JUN 2018

# TAKEOFF MINIMUMS, (OBSTACLE) DEPARTURE PROCEDURES, AND DIVERSE VECTOR AREA (RADAR VECTORS)

18088

SE-1

**TAKEOFF MINIMUMS, (OBSTACLE) DEPARTURE PROCEDURES, AND  
DIVERSE VECTOR AREA (RADAR VECTORS)**

18088

**CLARKSVILLE, TN****OUTLAW FIELD (CKV)****TAKEOFF MINIMUMS AND (OBSTACLE)  
DEPARTURE PROCEDURES****AMDT 2 06271 (FAA)**

**TAKEOFF MINIMUMS: Rwy 35**, 300-1 or std. w/min. climb of 240' per NM to 800. Alternatively, with standard takeoff minimums and a normal 200'/NM climb gradient, takeoff must occur no later than 1900' prior to DER.

**TAKEOFF OBSTACLE NOTES: Rwy 5**, multiple trees beginning 29' from DER, 135' right of centerline, up to 100' AGL/650' MSL. Multiple trees beginning 787' from DER, 225' left of centerline, up to 100' AGL/ 626' MSL. Road 41' from DER, 122' right of centerline, up to 15' AGL/541' MSL. Terrain 32' from DER, 414' right of centerline, 0' AGL/535' MSL. **Rwy 17**, multiple trees and poles beginning 14' from DER, 251' right of centerline, up to 100' AGL/621' MSL. Multiple trees beginning 174' from DER, 212' left of centerline, up to 59' AGL/608' MSL. **Rwy 23**, multiple trees beginning 184' from DER, 61' right of centerline, up to 100' AGL/593' MSL. Multiple trees beginning 912' from DER, 106' left of centerline, up to 100' AGL/590' MSL. Road 162' from DER, 7' right of centerline, up to 15' AGL/551' MSL. Cross on church 752' from DER, 237' left of centerline, 52' AGL/587' MSL. **Rwy 35**, multiple trees, poles, and buildings beginning 929' from DER, 249' left of centerline, up to 75' AGL/645' MSL. Multiple trees, poles and transmission towers beginning 959' from DER, 147' right of centerline, up to 100' AGL/695' MSL.

**CLEVELAND, TN****CLEVELAND RGNL JETPORT (RZR)****TAKEOFF MINIMUMS AND (OBSTACLE)  
DEPARTURE PROCEDURES****AMDT 1 14149 (FAA)**

**TAKEOFF MINIMUMS: Rwy 21**, 300-1¾ or std. w/min. climb of 260' per NM to 1200.

**DEPARTURE PROCEDURE: Rwy 3**, climb heading 034° to 2200 before turning right. **Rwy 21**, climb heading 214° to 2400 before proceeding on course.

**TAKEOFF OBSTACLE NOTES: Rwy 21**, trees beginning 2927' from DER, 114' left of centerline, up to 100' AGL/920' MSL. Trees beginning 1.12 NM from DER, 2087' left of centerline, up to 100' AGL/1021' MSL. Tower 1.16 NM from DER, 65' left of centerline, 196' AGL/1054' MSL. Tower 1.47 NM from DER, 880' right of centerline, 225' AGL/1075' MSL.

**COLUMBIA-MT. PLEASANT, TN****MAURY COUNTY (MRC)****TAKEOFF MINIMUMS AND (OBSTACLE)  
DEPARTURE PROCEDURES****AMDT 3 13346 (FAA)**

**TAKEOFF MINIMUMS: Rwy 17, 35**, NA - Environmental. **Rwy 6**, 300-1½, or std. w/min. climb of 293' per NM to 1100. **Rwy 24**, 400-2¼ or std. w/min. climb of 278' per NM to 1200.

**DEPARTURE PROCEDURE: Rwy 24**, climb heading 235° to 1200 before turning left.

**TAKEOFF OBSTACLE NOTES: Rwy 6**, trees beginning 1177' from DER, 591' left of centerline, up to 92' AGL/751' MSL. Trees beginning 1123' from DER, 732' right of centerline, up to 96' AGL/745' MSL. Poles 24' from DER, 356' left of centerline, 42' AGL/691' MSL. Trees beginning 2716' from DER, 921' left of centerline, up to 88' AGL/757' MSL. **Rwy 24**, trees beginning 1819' from DER, 190' right of centerline, up to 124' AGL/739' MSL. Trees beginning 1239' from DER, 700' left of centerline, up to 104' AGL/718' MSL. Trees beginning 1299' from DER, 217' left of centerline, up to 96' AGL/712' MSL. Pole 21' from DER, 487' right of centerline, 23' AGL/677' MSL. Trees beginning 1725' from DER, 10' left of centerline, up to 106' AGL/719' MSL. Trees beginning 2607' from DER, 324' left of centerline, up to 107' AGL/735' MSL.

**COPPERHILL, TN****MARTIN CAMPBELL FIELD (1A3)****TAKEOFF MINIMUMS AND (OBSTACLE)  
DEPARTURE PROCEDURES****ORIG 1 1237 (FAA)**

**TAKEOFF MINIMUMS: Rwy 2**, std. w/min. climb of 433' per NM to 3000, or 2400-3 for climb in visual conditions.

**Rwy 20**, std. w/min. climb of 402' per NM to 3900, or 2400-3 for climb in visual conditions.

**DEPARTURE PROCEDURE: Rwy 2**, climb heading 019° to 4000 before proceeding on course or for climb in visual conditions cross Martin Campbell Field at or above 4000 before proceeding on course. **Rwy 20**, climb heading 199° to 3900 before proceeding on course or for climb in visual conditions cross Martin Campbell Field at or above 4000 before proceeding on course.

**TAKEOFF OBSTACLE NOTES: Rwy 2**, trees beginning 28' from DER, 133' left of centerline, up to 100' AGL/2186' MSL. Trees beginning 104' from DER, 144' right of centerline, up to 100' AGL/1860' MSL. **Rwy 20**, trees beginning 1' from DER, 163' left of centerline, up to 100' AGL/1827' MSL. Terrain 119' from DER, 2' left of centerline, 1775' MSL. Trees beginning 4' from DER, 156' right of centerline, up to 100' AGL/1827' MSL.

24 MAY 2018 to 21 JUN 2018

24 MAY 2018 to 21 JUN 2018

**TAKEOFF MINIMUMS, (OBSTACLE) DEPARTURE PROCEDURES, AND  
DIVERSE VECTOR AREA (RADAR VECTORS)**

18088

SE-1

**TAKEOFF MINIMUMS, (OBSTACLE) DEPARTURE PROCEDURES, AND  
DIVERSE VECTOR AREA (RADAR VECTORS)**

18088

**COVINGTON, KY**  
CINCINNATI/NORTHERN KENTUCKY  
INTL (CVG)

TAKEOFF MINIMUMS AND (OBSTACLE)  
DEPARTURE PROCEDURES  
AMDT 1 10098 (FAA)

TAKEOFF OBSTACLE NOTES: **Rwy 9**, trees beginning 4562' from DER, 900' left of centerline, up to 94' AGL/1003' MSL. Trees 3385' from DER, 1117' right of centerline, up to 59' AGL/988' MSL. **Rwy 18C**, trees beginning 1882' from DER, 834' left of centerline, up to 75' AGL/974' MSL. Trees 3473' from DER, 904' right of centerline, up to 70' AGL/929' MSL. **Rwy 18R**, trees beginning 3221' from DER, 895' left of centerline, up to 85' AGL/964' MSL. **Rwy 36C**, trees beginning 956' from DER, 613' right of centerline, up to 94' AGL/963' MSL. **Rwy 36R**, light pole 1476' from DER, 813' left of centerline, 47' AGL/926' MSL. Trees 1602' from DER, 754' right of centerline, up to 59' AGL/938' MSL.

**COVINGTON, TN**  
COVINGTON MUNI (M04)

TAKEOFF MINIMUMS AND (OBSTACLE)  
DEPARTURE PROCEDURES  
ORIG-A 14093 (FAA)

TAKEOFF OBSTACLE NOTES: **Rwy 1**, vehicle on road 513' from DER, 13' right of centerline, up to 15' AGL/294' MSL. **Rwy 19**, fence beginning 150' from DER, 248' right of centerline, up to 2' AGL/284' MSL. Trees beginning 500' from DER, 60' left of centerline, up to 55' AGL/356' MSL. Building and trees beginning 1793' from DER, 304' right of centerline, up to 60' AGL/372' MSL.

**CROSSVILLE, TN**  
CROSSVILLE MEMORIAL-WHITSON  
FIELD (CSV)

TAKEOFF MINIMUMS AND (OBSTACLE)  
DEPARTURE PROCEDURES  
ORIG 03247 (FAA)

TAKEOFF OBSTACLE NOTES: **Rwy 8**, trees 31' from DER, 499' left of centerline, 60' AGL/1905' MSL. Trees 572' from DER, 499' left of centerline, 75' AGL/1889' MSL. Trees 8' from DER, 438' right of centerline, 30' AGL/1873' MSL. Bush 76' from DER, 213' right of centerline, 8' AGL/1872' MSL. **Rwy 26**, tree 43' from DER, 468' left of centerline, 26' AGL/1910' MSL. Numerous trees 94 to 576' from DER, 355 to 583' right of centerline, 40 to 70' AGL/1901 to 1927' MSL. Pole 141' from DER, 474' right of centerline, 50' AGL/1914' MSL. Tree 1083' from DER, 363' right of centerline, 74' AGL/1922' MSL. Tree 343' from DER, 538' left of centerline, 68' AGL/1939' MSL.

**CYNTHIANA, KY**  
CYNTHIANA-HARRISON COUNTY (018)  
TAKEOFF MINIMUMS AND (OBSTACLE)  
DEPARTURE PROCEDURES

ORIG 14317 (FAA)

TAKEOFF MINIMUMS: **Rwy 11**, 300-1½ or std. w/min. climb of 510' per NM to 1000. **Rwy 29**, 300-1¼ or std. w/ min. climb of 240' per NM to 1000.  
TAKEOFF OBSTACLE NOTES: **Rwy 11**, multiple trees beginning 25' from DER, 56' left of centerline, up to 108' AGL/819' MSL. Fence 942' from DER, 643' left of centerline, 17' AGL/767' MSL. Multiple trees beginning 1067' from DER, along and right of course, up to 125' AGL/908' MSL. Multiple trees beginning 1090' from DER, along and left of course, up to 114' AGL/900' MSL. Terrain beginning 1201' from DER, 1' left of centerline, up to 837' MSL. Multiple poles beginning 1265' from DER, 4' left of centerline, up to 67' AGL/879' MSL. Multiple buildings beginning 1642' from DER, 3' left of centerline, up to 19' AGL/832' MSL. Terrain beginning 1881' from DER, 4' right of centerline, up to 859' MSL. Multiple fences beginning 1907' from DER, 26' left of centerline, up to 15' AGL/838' MSL. Multiple fences beginning 2266' from DER, 22' right of centerline, up to 13' AGL/855' MSL. Multiple buildings beginning 2274' from DER, 7' right of centerline, up to 33' AGL/872' MSL. Multiple poles beginning 2331' from DER, 39' right of centerline, up to 70' AGL/897' MSL. Vehicles on road beginning 2356' from DER, left and right of centerline, up to 15' AGL/833' MSL. Antenna 2879' from DER, 753' right of centerline, 36' AGL/856' MSL. **Rwy 29**, runway end lights 11' from DER, 113' right of centerline, 3' AGL/722' MSL. Multiple trees beginning 37' from DER, 18' right of centerline, up to 85' AGL/856' MSL. Bushes beginning 82' from DER, 201' left of centerline, up to 11' AGL/728' MSL. Multiple buildings beginning 217' from DER, 272' right of centerline, up to 23' AGL/757' MSL. Railroad beginning 412' from DER, crossing left and right of centerline, up to 23' AGL/780' MSL. Multiple trees beginning 440' from DER, 12' left of centerline, up to 111' AGL/894' MSL. Multiple poles beginning 968' from DER, 153' left of centerline, up to 35' AGL/755' MSL. Flag pole 1409' from DER, 798' right of centerline, 51' AGL/781' MSL. Multiple poles beginning 1453' from DER, 73' right of centerline, up to 50' AGL/771' MSL. Multiple buildings beginning 4754' from DER, 342' left of centerline, up to 51' AGL/851' MSL.

**DANVILLE, KY**  
STUART POWELL FIELD (DVK)  
TAKEOFF MINIMUMS AND (OBSTACLE)  
DEPARTURE PROCEDURES  
AMDT 1 11293 (FAA)

TAKEOFF MINIMUMS: **Rwys 1, 19**, N/A - Obstacles.  
**Rwy 30**, 500-3 or std. w/ min. climb of 290' per NM to 1600.

DEPARTURE PROCEDURE: **Rwy 30**, Climb heading 305° to 1700 before turning left.

TAKEOFF OBSTACLE NOTES: **Rwy 12**, trees beginning 1938' from DER, 603' left of centerline, up to 100' AGL/1100' MSL. **Rwy 30**, trees and building beginning 8' from DER, 269' left of centerline, up to 100' AGL/1080' MSL. Trees and obstruction light DME, beginning 459' from DER, 114' right of centerline, up to 100' AGL/1105' MSL.

24 MAY 2018 to 21 JUN 2018

24 MAY 2018 to 21 JUN 2018

**TAKEOFF MINIMUMS, (OBSTACLE) DEPARTURE PROCEDURES, AND  
DIVERSE VECTOR AREA (RADAR VECTORS)**

18088

SE-1

# TAKEOFF MINIMUMS, (OBSTACLE) DEPARTURE PROCEDURES, AND DIVERSE VECTOR AREA (RADAR VECTORS)

18088

**DAYTON, TN****MARK ANTON (2A0)**

TAKEOFF MINIMUMS AND (OBSTACLE)

DEPARTURE PROCEDURES

AMDT 3 11237 (FAA)

TAKEOFF MINIMUMS: **Rwy 3**, 300-1¼ or std. w/min. climb of 205' per NM to 1000, or alternatively, with std. takeoff minimums and a normal 200' per NM climb gradient, takeoff must occur no later than 1200' prior to DER.

DEPARTURE PROCEDURE: **Rwy 3**, climb heading 033° to 2100 before turning left. **Rwy 21**, climb heading 213° to 1500 before turning right.

TAKEOFF OBSTACLE NOTES: **Rwy 3**, vehicles on roadway beginning 106' from DER, left and right of centerline, up to 15' AGL/736' MSL. Fence 85' from DER, 498' right of centerline, 15' AGL/726' MSL. Bushes and trees beginning 117' from DER, left and right of centerline, up to 100' AGL/878' MSL. **Rwy 21**, rising terrain and trees beginning 9' from DER, left and right of centerline, up to 100' AGL/821' MSL.

**DICKSON, TN****DICKSON MUNI (M02)**

TAKEOFF MINIMUMS AND (OBSTACLE)

DEPARTURE PROCEDURES

AMDT 2A 12292 (FAA)

TAKEOFF MINIMUMS: **Rwy 17**, 400-2 or std. w/min. climb of 362' per NM to 1400.

DEPARTURE PROCEDURE: **Rwy 17**, climb runway heading to 1400 before turning.

TAKEOFF OBSTACLE NOTES: **Rwy 17**, trees 1230' from DER, 809' right of centerline, up to 100' AGL/1019' MSL. Tower 9464' from DER, 2386' right of centerline, 306' AGL/1246' MSL. **Rwy 35**, trees beginning 85' from DER, left and right of centerline, up to 100' AGL/1039' MSL. Vehicle on road 203' from DER, 266' left of centerline, 15' AGL/920' MSL.

**DYERSBURG, TN****DYERSBURG RGNL (DYR)**

TAKEOFF MINIMUMS AND (OBSTACLE)

DEPARTURE PROCEDURES

AMDT 1 11125 (FAA)

TAKEOFF MINIMUMS: **Rwys 16, 34**, NA - obstacles. TAKEOFF OBSTACLE NOTES: **Rwy 4**, trees beginning 183' from DER, 411' left of centerline, up to 101' AGL/400' MSL. **Rwy 22**, trees beginning 1484' from DER, 771' left of centerline, up to 112' AGL/381' MSL. Trees beginning 1396' from DER, 420' right of centerline, up to 128' AGL/387' MSL.

**ELIZABETHTON, TN****ELIZABETHTON MUNI (0A9)**

TAKEOFF MINIMUMS AND (OBSTACLE)

DEPARTURE PROCEDURES

ORIG 07186 (FAA)

TAKEOFF MINIMUMS: **Rwy 6**, NA-obstacles. **Rwy 24**, 600-2 w/ min. climb of 380' per NM to 7000 or 3500-3 for climb in visual conditions.

DEPARTURE PROCEDURE: **Rwy 24**, climb heading 244° to 3300 before proceeding on course. For climb in visual conditions cross Elizabethton Muni Airport at or above 4900 before proceeding on course.

TAKEOFF OBSTACLE NOTES: **Rwy 24**, numerous trees beginning 1655' from DER, 931' right of centerline, up to 100' AGL/2099' MSL. Numerous trees 1.36 NM from DER, 2353' left of centerline, up to 100' AGL/2179' MSL. Power line 5898' from DER, 973' left of centerline, up to 200' AGL/1759' MSL. Power line 1.13 NM from DER, 584' right of centerline, up to 200' AGL/1849' MSL.

**ELIZABETHTOWN, KY****ADDINGTON FIELD (EKX)**

TAKEOFF MINIMUMS AND (OBSTACLE)

DEPARTURE PROCEDURES

AMDT 1 06159 (FAA)

DEPARTURE PROCEDURE: **Rwy 5**, climb via heading 050° to 1800 before proceeding on course.

TAKEOFF OBSTACLE NOTES: **Rwy 5**, multiple trees beginning 1404' from DER, 466' left of centerline, up to 96' AGL/835' MSL. **Rwy 23**, multiple trees and power lines beginning 7' from DER, 372' left of centerline, up to 100' AGL/899' MSL. Multiple trees and power lines beginning 2416' from DER, 25' right of centerline, up to 100' AGL/869' MSL.

**FALMOUTH, KY****GENE SNYDER (K62)**

TAKEOFF MINIMUMS AND (OBSTACLE)

DEPARTURE PROCEDURES

ORIG 07270 (FAA)

TAKEOFF MINIMUMS: **Rwy 3**, 300-1¼ or std. w/ a min. climb of 417' per NM to 1300.

TAKEOFF OBSTACLE NOTES: **Rwy 3**, tower 5831' from DER, 340' left of centerline, 106' AGL/1037' MSL. **Rwy 21**, trees beginning 300' from DER, left and right of centerline, up to 100' AGL/979' MSL.

**FAYETTEVILLE, TN****FAYETTEVILLE MUNI (FYM)**

TAKEOFF MINIMUMS AND (OBSTACLE)

DEPARTURE PROCEDURES

AMDT 1 13066 (FAA)

TAKEOFF OBSTACLE NOTES: **Rwy 2**, terrain 5' from DER, 495' right of centerline, 985' MSL. Vehicles on road beginning 534' from DER, left and right of centerline, up to 15' AGL/1004' MSL. Trees beginning 742' from DER, 26' left of centerline, up to 100' AGL/1109' MSL. Trees beginning 987' from DER, 468' right of centerline, up to 100' AGL/1089' MSL. **Rwy 20**, trees beginning 82' from DER, 451' right of centerline, up to 100' AGL/1059' MSL. Trees beginning 835' from DER, 420' left of centerline, up to 100' AGL/1059' MSL. Tree 1428' from DER, on centerline, 100' AGL/1014' MSL. Trees beginning 1719' from DER, 55' left of centerline, up to 100' AGL/1099' MSL.

24 MAY 2018 to 21 JUN 2018

24 MAY 2018 to 21 JUN 2018

# TAKEOFF MINIMUMS, (OBSTACLE) DEPARTURE PROCEDURES, AND DIVERSE VECTOR AREA (RADAR VECTORS)

18088

SE-1



**TAKEOFF MINIMUMS, (OBSTACLE) DEPARTURE PROCEDURES, AND DIVERSE VECTOR AREA (RADAR VECTORS)**

18088

**FLEMINGSBURG, KY**

FLEMING-MASON (FGX)  
TAKEOFF MINIMUMS AND (OBSTACLE)  
DEPARTURE PROCEDURES  
ORIG 09127 (FAA)

TAKEOFF OBSTACLE NOTES: **Rwy 7**, tree 53' from DER, 498' right of centerline, 50' AGL/929' MSL. **Rwy 25**, tree 126' from DER, 158' right of centerline, 34' AGL/914' MSL. Tree 525' from DER, 152' right of centerline, 41' AGL/921' MSL. Tree 505' from DER, 127' right of centerline, 38' AGL/918' MSL. Tree 587' from DER, 201' right of centerline, 40' AGL/920' MSL.

**FRANKFORT, KY**

CAPITAL CITY (FFT)  
TAKEOFF MINIMUMS AND (OBSTACLE)  
DEPARTURE PROCEDURES  
AMDT 3 13122 (FAA)

TAKEOFF OBSTACLE NOTES: **Rwy 7**, trees beginning 285' from DER, 76' right of centerline, up to 100' AGL/887' MSL. Pole 2549' from DER, 484' right of centerline, 34' AGL/855' MSL. Terrain beginning 25' from DER, left and right of centerline up to 837' MSL. Trees beginning 1638' from DER, 14' left of centerline, up to 100' AGL/903' MSL. Vehicle 946' from DER, 17' AGL/836' MSL. **Rwy 25**, trees beginning 199' from DER, 98' right of centerline, up to 100' AGL/892' MSL. Navaid and vehicle beginning 226' from DER, 256' right of centerline, up to 17' AGL/840' MSL. Terrain beginning 2' from DER, left and right of centerline, 850' MSL. Trees beginning 510' from DER, 69' left of centerline, up to 100' AGL/879' MSL. Poles beginning 198' from DER, 527' left of centerline, up to 38' AGL/852' MSL. Vehicle and building beginning 449' from DER, 434' left of centerline, up to 17' AGL/837' MSL.

**GALLATIN, TN**

SUMNER COUNTY RGNL (M33)  
TAKEOFF MINIMUMS AND (OBSTACLE)  
DEPARTURE PROCEDURES  
AMDT 4 15204 (FAA)

TAKEOFF MINIMUMS: **Rwy 35**, 300-1½ or std. w/min. climb of 305' per NM to 900.  
DEPARTURE PROCEDURES: **Rwy 35**, climb heading 353° to 1800 before turning left.  
TAKEOFF OBSTACLE NOTES: **Rwy 17**, trees beginning 99' from DER, left and right of centerline, up to 91' AGL/586' MSL. Pole 537' from DER, 605' left of centerline, 34' AGL/549' MSL. Trees beginning 940' from DER, left and right of centerline, up to 83' AGL/570' MSL. **Rwy 35**, TL towers and poles beginning 131' from DER, left and right of centerline, up to 25' AGL/624' MSL. Terrain beginning 171' from DER, 447' left of centerline, up to 592' MSL. Vehicles on road beginning 199' from DER, left and right of centerline, up to 17' AGL/605' MSL. Trees and poles beginning 923' from DER, left and right of centerline, up to 91' AGL/702' MSL. Buildings beginning 1023' from DER, left and right of centerline, up to 26' AGL/623' MSL. TL towers beginning 1311' from DER, 452' left of centerline, up to 97' AGL/702' MSL. Trees and poles beginning 3251' from DER, left and right of centerline, up to 96' AGL/718' MSL. TL towers beginning 4374' from DER, 428' left of centerline, up to 95' AGL/722' MSL.

**GEORGETOWN, KY**

GEORGETOWN-SCOTT COUNTY RGNL (27K)  
TAKEOFF MINIMUMS AND (OBSTACLE)  
DEPARTURE PROCEDURES  
ORIG-A 18088 (FAA)

TAKEOFF OBSTACLE NOTES: **Rwy 3**, Trees 3572' from DER, 162' left of centerline, 95' AGL/1042' MSL. **Rwy 21**, Vehicle on road 270' from DER, 51' left of centerline, 15' AGL/944' MSL.

**GLASGOW, KY**

GLASGOW MUNI (GLW)  
TAKEOFF MINIMUMS AND (OBSTACLE)  
DEPARTURE PROCEDURES  
AMDT 1 12180 (FAA)

TAKEOFF MINIMUMS: **Rwy 8**, 300-1½ or std. w/min. climb of 633' per NM to 1000. **Rwy 26**, 300-1 or std. w/min. climb of 297' per NM to 1000.  
DEPARTURE PROCEDURE: **Rwy 8**, climb heading 075° to 1300 before turning right.  
TAKEOFF OBSTACLE NOTES: **Rwy 8**, tree 2118' from DER, 1048' left of centerline, up to 100' AGL/889' MSL. Tree 2336' from DER, 909' left of centerline, up to 100' AGL/869' MSL. Terrain beginning 49' from DER, 9' left of centerline, up to 785' MSL. Terrain beginning 183' from DER, 69' right of centerline, up to 728' MSL. **Rwy 26**, multiple trees beginning 2098' from DER, left and right of centerline, up to 100' AGL/869' MSL.

**GODMAN AAF (KFTK)**

FORT KNOX, KY  
DEPARTURE PROCEDURE: . . . . . **Rwy 15**, 300-1. **Rwy 15, 18, 33, 36**, climb runway heading to 1200 before turning.

24 MAY 2018 to 21 JUN 2018

24 MAY 2018 to 21 JUN 2018

**TAKEOFF MINIMUMS, (OBSTACLE) DEPARTURE PROCEDURES, AND DIVERSE VECTOR AREA (RADAR VECTORS)**

18088

SE-1

# TAKEOFF MINIMUMS, (OBSTACLE) DEPARTURE PROCEDURES, AND DIVERSE VECTOR AREA (RADAR VECTORS)

18088

## GREENEVILLE, TN

GREENEVILLE-GREENE COUNTY MUNI  
(GCY)

TAKEOFF MINIMUMS AND (OBSTACLE)  
DEPARTURE PROCEDURES  
AMDT 4 14205 (FAA)

TAKEOFF MINIMUMS: **Rwy 5**, 300-2 w/min. climb of 250' per NM to 4100 or 2700-3 for climb in visual conditions. **Rwy 23**, 300-1 w/min. climb of 285' per NM to 4400 or std. w/min. climb of 320' to 4400 or 2700-3 for climb in visual conditions.

DEPARTURE PROCEDURE: **Rwy 5**, climb heading 054° to 4100 before turning right or for climb in visual conditions, cross Greenville-Greene County Muni airport at or above 4200 before proceeding on course. When executing VCOA, notify ATC prior to departure. **Rwy 23**, climb heading 234° to 4400 before turning left or for climb in visual conditions, cross Greenville Greene County Muni airport at or above 4200 before proceeding on course. When executing VCOA, notify ATC prior to departure.

TAKEOFF OBSTACLE NOTES: **Rwy 5**, rising terrain beginning 2' from DER, 16' right of centerline, up to 1637' MSL. Trees beginning 533' from DER, 430' right of centerline, up to 54' AGL/1666' MSL. Rising terrain and trees beginning 1347' from DER, 722' right of centerline, up to 146' AGL/1770' MSL. Trees beginning 3256' from DER, left and right of centerline, up to 150' AGL/1824' MSL. Trees beginning 7091' from DER, left and right of centerline, up to 128' AGL/1885' MSL. **Rwy 23**, trees beginning 110' from DER, 307' left of centerline, up to 83' AGL/1629' MSL. Trees beginning 353' from DER, 127' right of centerline, up to 30' AGL/1601' MSL. Trees beginning 2911' from DER, 1183' left of centerline, up to 129' AGL/1666' MSL. Trees beginning 4387' from DER, 1397' right of centerline, up to 111' AGL/1770' MSL.

## GREENVILLE, KY

MUHLNBURG COUNTY (M21)

TAKEOFF MINIMUMS AND (OBSTACLE)  
DEPARTURE PROCEDURES  
AMDT 2 12152 (FAA)

TAKEOFF MINIMUMS: **Rwy 6**, 300-1¾. **Rwy 24**, 400-3 or std. w/min. climb of 465' per NM to 1000.

TAKEOFF OBSTACLE NOTES: **Rwy 6**, terrain and trees beginning 246' from DER. 221' left of centerline, up to 100' AGL/539' MSL. Terrain and trees beginning 1089' from DER, 35' right of centerline, up to 100' AGL/559' MSL. Trees 1415' from DER, 195' right of centerline, up to 100' AGL/609' MSL. Trees 1.1 NM from DER, 2312' left of centerline, up to 100' AGL/689' MSL. Trees 1.4 NM from DER, 2564' left of centerline, up to 100' AGL/669' MSL. **Rwy 24**, trees beginning 518' from DER, 363' left of centerline, up to 100' AGL/519' MSL. Terrain and trees beginning 328' from DER, 502' right of centerline, up to 100' AGL/539' MSL. Trees 2659' from DER, 326' left of centerline, up to 100' AGL/569' MSL. Tower 2.4 NM from DER, 4098' left of centerline, 218' AGL/818' MSL.

## HARLAN, KY

TUCKER-GUTHRIE MEMORIAL (I35)

TAKEOFF MINIMUMS AND (OBSTACLE)  
DEPARTURE PROCEDURES  
ORIG 16203 (FAA)

TAKEOFF MINIMUMS: **Rwy 8**, std. w/min. climb of 470' per NM to 4200 or 2800-3 for climb in visual conditions.

**Rwy 26**, 1000-3 w/min. climb of 430' per NM to 3000 or 2800-3 for climb in visual conditions.

DEPARTURE PROCEDURE: **Rwy 8**, climb on heading 080° to 4200 before proceeding on course. **Rwy 26**, climb on heading 250° to 4200 before proceeding on course.

VCOA: **Rwy 8, 26**, obtain ATC approval for climb in visual conditions when requesting IFR clearance. Climb in visual conditions to cross Tucker-Guthrie memorial at or above 4200' before proceeding on course.

TAKEOFF OBSTACLE NOTES: **Rwy 8**, trees beginning 350' from DER, 97' right of centerline, up to 100' AGL/1619' MSL. Trees beginning 359' from DER, 126' right of centerline, up to 100' AGL/1739' MSL. Trees beginning 1105' from DER, 308' right of centerline, up to 100' AGL/1779' MSL. Trees beginning 1471' from DER, 369' right of centerline, up to 100' AGL/1819' MSL. Trees beginning 3951' from DER, 826' right of centerline, up to 100' AGL/1859' MSL. Trees beginning 1.9 NM from DER, 3003' right of centerline, up to 100' AGL/2099' MSL. Trees beginning 2.2 NM from DER, 2674' right of centerline, up to 100' AGL/2299' MSL. Trees beginning 2.5 NM from DER, 1549' right of centerline, up to 100' AGL/2139' MSL. **Rwy 26**, trees beginning 113' from DER, 220' left of centerline, up to 100' AGL/1539' MSL. Trees beginning 187' from DER, 147' right of centerline, up to 100' AGL/1619' MSL. Trees beginning 2112' from DER, 677' right of centerline, up to 100' AGL/1739' MSL. Trees beginning 2913' from DER, 944' right of centerline, up to 100' AGL/1819' MSL. Tower 1.5 NM from DER, 1294' left of centerline, 343' AGL/1802' MSL. Trees beginning 1.7 NM from DER, 3222' right of centerline, up to 100' AGL/2139' MSL.

## HARTFORD, KY

OHIO COUNTY (JQD)

TAKEOFF MINIMUMS AND (OBSTACLE)  
DEPARTURE PROCEDURES

AMDT 1A 13122 (FAA)

TAKEOFF MINIMUMS: **Rwy 3**, 500-3 or std. w/min. climb of 257' per NM to 1200.

TAKEOFF OBSTACLE NOTES: **Rwy 3**, trees beginning 388' from DER, 508' right of centerline, up to 100' AGL/669' MSL. Trees beginning 1741' from DER, 890' left of centerline, up to 100' AGL/669' MSL. Tower 2.5 NM from DER, 3516' right of centerline, 290' AGL/950' MSL. **Rwy 21**, trees beginning 79' from DER, 294' right of centerline, up to 100' AGL/585' MSL. Trees beginning 95' from DER, 279' left of centerline, up to 100' AGL/568' MSL.

24 MAY 2018 to 21 JUN 2018

24 MAY 2018 to 21 JUN 2018

# TAKEOFF MINIMUMS, (OBSTACLE) DEPARTURE PROCEDURES, AND DIVERSE VECTOR AREA (RADAR VECTORS)

18088

SE-1

**TAKEOFF MINIMUMS, (OBSTACLE) DEPARTURE PROCEDURES, AND  
DIVERSE VECTOR AREA (RADAR VECTORS)**

18088

**HAZARD, KY**

WENDELL H. FORD (CPF)

TAKEOFF MINIMUMS AND (OBSTACLE)  
DEPARTURE PROCEDURES  
AMDT 3 12096 (FAA)

TAKEOFF MINIMUMS: **Rwy 6**, 500-2¼. **Rwy 14**, 500-2¼ w/min. climb of 291' per NM to 2300 or 1000-3 for climb in visual conditions. **Rwy 24**, 500-2½. **Rwy 32**, 300-2¼ or std. w/min. climb of 363' per NM to 1700.

DEPARTURE PROCEDURE: **Rwy 6**, climb heading 065° to 1900 before proceeding on course. **Rwy 14**, climb heading 145° to 2000 before proceeding on course, or for climb in visual conditions, cross Wendell H. Ford airport at or above 2100 before proceeding on course. **Rwy 24**, climb heading 245° to 1900 before proceeding on course. **Rwy 32**, climb heading 325° to 1700 before proceeding on course.

TAKEOFF OBSTACLE NOTES: **Rwy 6**, trees beginning 1457' from DER, left and right of centerline, up to 100' AGL/1699' MSL. **Rwy 14**, rising terrain beginning 117' from DER, 125' right of centerline, up to 1435' MSL. Multiple pole, fence, bushes beginning 131' from DER, 415' right of centerline, up to 80' AGL/1477' MSL. Trees beginning 1284' from DER, left and right of centerline, up to 100' AGL/1659' MSL. **Rwy 24**, trees beginning 13' from DER, left and right of centerline, up to 100' AGL/1739' MSL. **Rwy 32**, multiple poles, buildings and antenna beginning 34' from DER, 471' left of centerline, up to 80' AGL/1279' MSL. Airplane on Rwy 6/24 155' from DER, 427' right of centerline, up to 25' AGL/1264' MSL. Multiple trees beginning 997' from DER, left and right of centerline, up to 100' AGL/1539' MSL.

**HENDERSON, KY**

HENDERSON CITY-COUNTY (EHR)

TAKEOFF MINIMUMS AND (OBSTACLE)  
DEPARTURE PROCEDURES  
AMDT 3 11013 (FAA)

DEPARTURE PROCEDURE: **Rwy 9**, climb heading 089° to 1500 before turning left.

TAKEOFF OBSTACLE NOTES: **Rwy 9**, vehicle on road 336' from DER, 365' left of centerline, 15' AGL/ 405' MSL. Poles beginning 422' from DER, 355' left of centerline, up to 36' AGL/ 421' MSL. Trees beginning 463' from DER, 523' left of centerline up to 88' AGL/ 473' MSL. Building and equipment on building 3604' from DER, 598' MSL left of centerline, up to 102' AGL/ 487' MSL. Elevator 3658' from DER, 1007' left of centerline, 137' AGL/ 527' MSL. **Rwy 27**, vehicle on road 198' from DER, 437' left of centerline, 15' AGL/ 399' MSL. Pole 1806' from DER, 401' right of centerline, 48' AGL/ 433' MSL. Trees beginning 2343' from DER, 552' right of centerline, up to 100' AGL/ 489' MSL. Trees beginning 2563' from DER, 374' left of centerline, up to 109' AGL/ 489' MSL.

**HOHENWALD, TN**

JOHN A. BAKER FIELD (0M3)

TAKEOFF MINIMUMS AND (OBSTACLE)  
DEPARTURE PROCEDURES  
ORIG 10070 (FAA)

TAKEOFF MINIMUMS: **Rwy 20**, 300-1¼ or std. w/ min. climb of 246' per NM to 1300.

TAKEOFF OBSTACLE NOTES: **Rwy 2**, vehicle on road, 16' from DER, 121' right of centerline, up to 17' AGL/996' MSL. Vehicles on road 119' from DER, left and right of centerline, up to 17' AGL/996' AGL. Trees beginning 812' from DER, left and right of centerline, up to 100' AGL/1099' MSL. **Rwy 20**, trees beginning 655' from DER, 544' right of centerline, up to 100' AGL/1059' MSL. Trees beginning 1682' from DER, 597' left of centerline, up to 100' AGL/1059' MSL. Power lines, 1.2 NM from DER, left and right of centerline, up to 169' AGL/1149' MSL.

**HOPKINSVILLE, KY**

HOPKINSVILLE-CHRISTIAN COUNTY

(HVC)

TAKEOFF MINIMUMS AND (OBSTACLE)  
DEPARTURE PROCEDURES  
AMDT 1 08353 (FAA)

TAKEOFF MINIMUMS: **Rwy 8**, 300-1 or std. w/ min. climb of 275' per NM to 800. **Rwy 26**, 300-1½ or std. w/ min. climb of 260' per NM to 1100.

DEPARTURE PROCEDURE: **Rwy 8**, climb heading 080° to 800 before proceeding on course. **Rwy 26**, climb heading 258° to 1100 before turning north.

TAKEOFF OBSTACLE NOTES: **Rwy 8**, trees beginning 2876' from DER, 97' right of centerline, up to 100' AGL/669' MSL. Power lines 3454' from DER, 852' left of centerline, 79' AGL/658' MSL. Trees beginning 3463' from DER, 1049' left of centerline, up to 100' AGL/739' MSL. **Rwy 26**, trees beginning 61' from DER, 2' left of centerline, up to 100' AGL/639' MSL. Trees beginning 758' from DER, 353' right of centerline, up to 100' AGL/629' MSL. Tower 2260' from DER, 582' left of centerline, 130' AGL/670' MSL. Elevator, 1.4 miles from DER, 1278' right of centerline, 201' AGL/780' MSL.

24 MAY 2018 to 21 JUN 2018

24 MAY 2018 to 21 JUN 2018

**TAKEOFF MINIMUMS, (OBSTACLE) DEPARTURE PROCEDURES, AND  
DIVERSE VECTOR AREA (RADAR VECTORS)**

18088

SE-1

# TAKEOFF MINIMUMS, (OBSTACLE) DEPARTURE PROCEDURES, AND DIVERSE VECTOR AREA (RADAR VECTORS)

18088

## HUMBOLDT, TN

### HUMBOLDT MUNI (M53)

#### TAKEOFF MINIMUMS AND (OBSTACLE) DEPARTURE PROCEDURES

AMDT 1 15344 (FAA)

TAKEOFF OBSTACLE NOTES: **Rwy 4**, airport light 11' from DER, 76' right of centerline, 2' AGL/422' MSL. Trees beginning 17' from DER, 218' right of centerline, up to 84' AGL/494' MSL. Trees beginning 66' from DER, 150' left of centerline, up to 57' AGL/476' MSL. Trees beginning 802' from DER, 323' left of centerline, up to 69' AGL/485' MSL. Trees beginning 984' from DER, 50' left of centerline, up to 96' AGL/503' MSL. Trees beginning 1080' from DER, 26' right of centerline, up to 91' AGL/505' MSL. **Rwy 22**, transmission tower and trees beginning 61' from DER, 234' right of centerline, up to 91' AGL/483' MSL. Pole and vehicles on road beginning 80' from DER, 245' left of centerline, up to 38' AGL/437' MSL. Trees beginning 442' from DER, 366' right of centerline, up to 82' AGL/481' MSL. Transmission tower and trees beginning 493' from DER, 127' left of centerline, up to 72' AGL/481' MSL. Trees beginning 1396' from DER, 1' left of centerline, up to 85' AGL/474' MSL. Trees beginning 1809' from DER, 264' right of centerline, up to 85' AGL/474' MSL.

## HUNTINGDON, TN

### CARROLL COUNTY (HZD)

#### TAKEOFF MINIMUMS AND (OBSTACLE) DEPARTURE PROCEDURES

AMDT 3 11013 (FAA)

TAKEOFF OBSTACLE NOTES: **Rwy 1**, trees beginning 33' from DER, 4' right of centerline, up to 102' AGL/612' MSL. Trees beginning 567' from DER, 88' left of centerline, up to 99' AGL/589' MSL. **Rwy 19**, trees beginning 1647' from DER, 561' left of centerline to 215' right of centerline, up to 100' AGL/599' MSL.

## JACKSBORO, TN

### CAMPBELL COUNTY (JAU)

#### TAKEOFF MINIMUMS AND (OBSTACLE) DEPARTURE PROCEDURES

AMDT 2 07186 (FAA)

TAKEOFF MINIMUMS: **Rwy 5**, std. w/ min. climb of 477' per NM to 3400, or 200-1 w/ min. climb of 308' per NM to 3400, or 1600-2½ for climb in visual conditions.

**Rwy 23**, NA-obstacles.

DEPARTURE PROCEDURE: **Rwy 5**, climb heading 049° to 3400 before proceeding on course or for climb in visual conditions: cross Campbell County Airport at or above 2600 then proceed on VXV R-336 to 3600 before proceeding on course. Do not exceed 210 KIAS until established on VXV R-336 southeast bound.

TAKEOFF OBSTACLE NOTES: **Rwy 5**, multiple trees beginning 369' from DER, 579' right of centerline, up to 100' AGL/1279' MSL. Multiple trees beginning 2672' from DER, 140' left of centerline, up to 100' AGL/1339' MSL.

## JACKSON, KY

### JULIAN CARROLL (JKL)

#### TAKEOFF MINIMUMS AND (OBSTACLE) DEPARTURE PROCEDURES

AMDT 2 17173 (FAA)

TAKEOFF OBSTACLE NOTES: **Rwy 1**, tree and vertical structure beginning 31' from DER, 368' right of centerline, up to 79' AGL/1426' MSL. Trees beginning 48' from DER, 33' left of centerline, up to 78' AGL/1426' MSL. Trees beginning 831' from DER, 504' right of centerline, up to 54' AGL/1431' MSL. Tree 1614' from DER, 712' right of centerline, 94' AGL/1436' MSL. **Rwy 19**, tree 79' from DER, 503' left of centerline, 111' AGL/1403' MSL. Tree, vertical structure and fence beginning 160' from DER, 334' right of centerline, up to 103' AGL/1415' MSL. Tree and bush beginning 170' from DER, 25' left of centerline, up to 95' AGL/1417' MSL. Tree, fence and vertical structure beginning 241' from DER, 335' right of centerline, up to 75' AGL/1432' MSL. Tree, fence and vertical structure beginning 320' from DER, 357' left of centerline, up to 106' AGL/1428' MSL. Tree 438' from DER, 537' left of centerline, 93' AGL/1434' MSL. Tree 567' from DER, 610' left of centerline, 80' AGL/1437' MSL.

## JACKSON, TN

### MCKELLAR / SIPES RGNL (MKL)

#### TAKEOFF MINIMUMS AND (OBSTACLE) DEPARTURE PROCEDURES

AMDT 1 09127 (FAA)

DEPARTURE PROCEDURE: **Rwy 2**, climb heading 023° to 1100 before turning right.

TAKEOFF OBSTACLE NOTES: **Rwy 2**, vehicles on roadway beginning 489' from DER, 594' left of centerline, up to 15' AGL/439' MSL. Trees beginning 782' from DER, 97' left of centerline, up to 100' AGL/491' MSL. Poles and trees beginning 880' from DER, 599' of centerline, up to 100' AGL/456' MSL. Antenna 2043' from DER, 947' left of centerline, 61' AGL/470' MSL. **Rwy 11**, trees beginning 787' from DER, 71' left of centerline, up to 77' AGL/476' MSL. Trees beginning 1080' from DER, 215' right of centerline, up to 100' AGL/509' MSL. **Rwy 20**, vehicles on roadway beginning 41' from DER, 221' right of centerline, up to 15' AGL/444' MSL. Trees beginning 2970' from DER, 877' left of centerline, up to 100' AGL/528' MSL. Trees beginning 2416' from DER, 1040' right of centerline, up to 100' AGL/532' MSL. Power lines beginning 1893' from DER, 972' right of centerline, 40' AGL/499' MSL. **Rwy 29**, light pole 40' from DER, 402' left of centerline, 70' AGL/449' MSL. Vehicles on roadway beginning 165' from DER, left and right of centerline, up to 17' AGL/434' MSL. Trees beginning 1362' from DER, 360' right of centerline, up to 100' AGL/486' MSL. Trees beginning 1738' from DER, 55' left of centerline, up to 100' AGL/499' MSL.

## JAMESTOWN, KY

### RUSSELL COUNTY (K24)

#### TAKEOFF MINIMUMS AND (OBSTACLE) DEPARTURE PROCEDURES

ORIG 08017 (FAA)

TAKEOFF OBSTACLE NOTES: **Rwy 17**, trees 2071' from DER, 234' right of centerline, 54' AGL/1012' MSL. **Rwy 35**, trees 2500' from DER, 99' left of centerline, 65' AGL/1076' MSL.

24 MAY 2018 to 21 JUN 2018

24 MAY 2018 to 21 JUN 2018

# TAKEOFF MINIMUMS, (OBSTACLE) DEPARTURE PROCEDURES, AND DIVERSE VECTOR AREA (RADAR VECTORS)

18088

SE-1

# TAKEOFF MINIMUMS, (OBSTACLE) DEPARTURE PROCEDURES, AND DIVERSE VECTOR AREA (RADAR VECTORS)

18088

## JAMESTOWN, TN

JAMESTOWN MUNI (2A1)

TAKEOFF MINIMUMS AND (OBSTACLE)

DEPARTURE PROCEDURES

ORIG 09267 (FAA)

TAKEOFF OBSTACLE NOTES: **Rwy 18**, trees beginning 1013' from DER, left and right of centerline, up to 100' AGL/1819' MSL. **Rwy 36**, trees beginning 1392' from DER, left and right of centerline, up to 100' AGL/1819' MSL.

## JASPER, TN

MARION COUNTY-BROWN FIELD (APT)

TAKEOFF MINIMUMS AND (OBSTACLE)

DEPARTURE PROCEDURES

AMDT 1 21321 (FAA)

TAKEOFF MINIMUMS: **Rwy 4**, std. w/min. climb of 460' per NM to 2600 or 2000-3 for climb in visual conditions.

DEPARTURE PROCEDURE: **Rwy 4**, for climb in visual conditions: cross Marion County-Brown Field at or above 2500 before proceeding on course. **Rwy 22**, climb heading 230° to 2300 before turning on course.

TAKEOFF OBSTACLE NOTES: **Rwy 4**, trees and bushes beginning 163' from DER, 162' left of centerline, up to 104' AGL/764' MSL. Trees beginning 1199' from DER, 33' right of centerline, up to 108' AGL/718' MSL. Trees beginning 1217' from DER, 20' left of centerline, up to 120' AGL/744' MSL. **Rwy 22**, trees beginning 129' from DER, 3' left of centerline, up to 75' AGL/725' MSL. Trees and bush beginning 150' from DER, 19' right of centerline, up to 42' AGL/694' MSL. Power lines beginning 662' from DER, left and right of centerline, up to 48' AGL/683' MSL. Trees beginning 2010' from DER, 9' right of centerline, up to 123' AGL/755' MSL. Trees beginning 2061' from DER, 22' left of centerline, up to 116' AGL/758' MSL.

## KNOXVILLE, TN

KNOXVILLE DOWNTOWN ISLAND (DKX)

TAKEOFF MINIMUMS AND (OBSTACLE)

DEPARTURE PROCEDURES

AMDT 5 10238 (FAA)

TAKEOFF MINIMUMS: **Rwy 8**, 400-2/4 or std. w/ min. climb of 395' per NM to 1400. **Rwy 26**, 500-2/4 w/ min. climb of 204' per NM to 1400 or 2600-3 for climb in visual conditions.

DEPARTURE PROCEDURE: **Rwy 8**, climb heading 085° to intercept VXV R-053 to 4100 before proceeding on course. **Rwy 26**, climb heading 245° to intercept VXV R-275 to 3100 before proceeding on course or for climb in visual conditions cross Knoxville Downtown Island Airport at or above 3300 before proceeding on course.

TAKEOFF OBSTACLE NOTES: **Rwy 8**, trees beginning 31' from DER, 142' left of centerline, up to 96' AGL/871' MSL. Trees beginning 2662' from DER, 856' right of centerline, up to 100' AGL/1219' MSL. **Rwy 26**, trees beginning 1792' from DER, 883' right of centerline, up to 57' AGL/1056' MSL. Trees beginning 4606' from DER, 1153' left of centerline, up to 100' AGL/1239' MSL. Trees and buildings 1.65 NM from DER, 1241' left of centerline, up to 100' AGL/1259' MSL. Trees and buildings beginning 1.67 NM from DER, 2666' right of centerline, up to 100' AGL/1328' MSL.

## KNOXVILLE, TN (CON'T)

MC GHEE TYSON (TYS)

TAKEOFF MINIMUMS AND (OBSTACLE)

DEPARTURE PROCEDURES

AMDT 8 16091 (FAA)

DEPARTURE PROCEDURE: **Rwy 5L/R**, Climb direct VXV VORTAC then on VXV VORTAC R-053 northeast bound to 4100 before proceeding on course. **Rwy 23L/R**, Climb on VXV VORTAC R-226 southwest bound to 4000 before proceeding on course.

TAKEOFF OBSTACLE NOTES: **Rwy 5L**, poles beginning 1735' from DER, 925' left of centerline, up to 66' AGL/1045' MSL. **Rwy 5R**, terrain 52' from DER, 489' left of centerline, 967' MSL. Poles beginning 94' from DER, 438' right of centerline, up to 45' AGL/976' MSL. **Rwy 23L**, catenaries beginning 3690' from DER, 521' left of centerline, up to 144' AGL/1040' MSL. Transmission line tower 3884' from DER, 1003' left of centerline, 137' AGL/1049' MSL.

## LAFAYETTE, TN

LAFAYETTE MUNI (3M7)

TAKEOFF MINIMUMS AND (OBSTACLE)

DEPARTURE PROCEDURES

ORIG 09099 (FAA)

TAKEOFF OBSTACLE NOTES: **Rwy 1**, road + vehicle 666' from DER, on centerline, 17' AGL/976' MSL. Tree 1120' from DER, 356' left of centerline, 51' AGL/992' MSL. **Rwy 19**, tree 2490' from DER, 509' right of centerline, 90' AGL/1039' MSL. Tree 2643' from DER, 359' right of centerline, 85' AGL/1060' MSL. Tree 2767' from DER, 406' right of centerline, 91' AGL/1078' MSL. Tree 3387' from DER, 220' right of centerline, 93' AGL/1092' MSL.

## LAWRENCEBURG, TN

LAWRENCEBURG-LAWRENCE COUNTY

(2M2)

TAKEOFF MINIMUMS AND (OBSTACLE)

DEPARTURE PROCEDURES

ORIG 09099 (FAA)

TAKEOFF OBSTACLE NOTES: **Rwy 17**, trees 10' from DER, 466' right of centerline, 100' AGL/1019' MSL. Vehicle on road 200' from DER, 526' left of centerline, 15' AGL/944' MSL. **Rwy 35**, trees 300' left of centerline, 100' AGL/1029' MSL. Trees, power lines and vehicle on road 1395' from DER, on centerline, up to 100' AGL/1059' MSL.

24 MAY 2018 to 21 JUN 2018

24 MAY 2018 to 21 JUN 2018

# TAKEOFF MINIMUMS, (OBSTACLE) DEPARTURE PROCEDURES, AND DIVERSE VECTOR AREA (RADAR VECTORS)

18088

SE-1

# TAKEOFF MINIMUMS, (OBSTACLE) DEPARTURE PROCEDURES, AND DIVERSE VECTOR AREA (RADAR VECTORS)

18088

## LEBANON, TN

### LEBANON MUNI (M54)

TAKEOFF MINIMUMS AND (OBSTACLE)  
DEPARTURE PROCEDURES  
AMDT 1 10210 (FAA)

TAKEOFF MINIMUMS: **Rwys 4,22**, NA-Obstacles.

**Rwy 19**, std. w/ min. climb of 285' per NM to 1500, or 1100-2½ for climb in visual conditions.

DEPARTURE PROCEDURE: **Rwy 19**, for climb in visual conditions cross Lebanon Muni airport at or above 1500 MSL before proceeding on course.

TAKEOFF OBSTACLE NOTES: **Rwy 1**, trees beginning 432' from DER, 313' right of centerline, up to 63' AGL/662' MSL. Road 348' from DER, 166' right of centerline, 15' AGL/568' MSL. Power pole 1174' from DER, 445' right of centerline, 38' AGL/597' MSL. Tree 2136' from DER, 8' left of centerline, 63' AGL/612' MSL. **Rwy 19**, trees beginning 1339' from DER, 342' right of centerline, up to 74' AGL/844' MSL. Road 334' from DER, 206' right of centerline, 15' AGL/607' MSL. Trees beginning 2085' from DER, 511' left of centerline, up to 68' AGL/749' MSL.

## LEWISBURG, TN

### ELLINGTON (LUG)

TAKEOFF MINIMUMS AND (OBSTACLE)  
DEPARTURE PROCEDURES  
AMDT 1 14177 (FAA)

TAKEOFF MINIMUMS: **Rwy 20**, 500-2¾ or std. w/min. climb of 260' per NM to 1300.

DEPARTURE PROCEDURE: **Rwy 20**, climb heading 201° to 1300 before turning right.

TAKEOFF OBSTACLE NOTES: **Rwy 2**, trees and navaid beginning 5' from DER, 496' right of centerline, up to 55' AGL/765' MSL. Navaid 8' from DER, 112' left of centerline, 10' AGL/710' MSL. Vehicles on road beginning 353' from DER, 594' right of centerline, up to 15' AGL/727' MSL. Trees beginning 405' from DER, 569' left of centerline, up to 43' AGL/753' MSL. Trees beginning 2071' from DER, 321' left of centerline, up to 89' AGL/789' MSL. Trees and tower beginning 2182' from DER, 117' right of centerline, up to 117' AGL/798' MSL. **Rwy 20**, trees and poles beginning 38' from DER, 418' left of centerline, up to 80' AGL/790' MSL. Sign, trees, poles, vehicles on road, windsock and buildings beginning 56' from DER, 246' right of centerline, up to 76' AGL/786' MSL. Trees beginning 1988' from DER, 701' left of centerline, up to 76' AGL/806' MSL. Trees beginning 1857' from DER, 466' right of centerline, up to 86' AGL/806' MSL.

## LEWISPORT, KY

### HANCOCK CO-RON LEWIS FIELD (KY8)

TAKEOFF MINIMUMS AND (OBSTACLE)  
DEPARTURE PROCEDURES  
ORIG 09351 (FAA)

TAKEOFF MINIMUMS: **Rwy 5**, 300-1¼ or std. w/ min. climb of 394' per NM to 700. **Rwy 23**, 400-1¼ or std. w/ a min. climb of 342' per NM to 900.

DEPARTURE PROCEDURE: Procedure NA at night.

TAKEOFF OBSTACLE NOTES: **Rwy 5**, trees beginning 206' from DER, 61' right of centerline, up to 100' AGL/599' MSL. **Rwy 23**, trees beginning 2778' from DER, 1230' right of centerline, up to 100' AGL/509' MSL. Tower 1.4 NM from DER, 1460' left of centerline, 300' AGL/770' MSL.

## LEXINGTON, KY

### BLUE GRASS (LEX)

TAKEOFF MINIMUMS AND (OBSTACLE)  
DEPARTURE PROCEDURES  
AMDT 7 10266 (FAA)

TAKEOFF OBSTACLE NOTES: **Rwy 4**, trees beginning 301' from DER, 502' left of centerline, up to 100' AGL/1039' MSL. Light 710' from DER, 657' right of centerline, 35' AGL/955' MSL. Trees beginning 898' from DER, 501' right of centerline, up to 70' AGL/1041' MSL. Trees beginning 1921' from DER, 520' left of centerline, up to 100' AGL/1042' MSL. **Rwy 9**, antenna on glideslope 685' from DER, 189' right of centerline, 34' AGL/1014' MSL. Trees beginning 1521' from DER, 905' left of centerline, up to 100' AGL/1039' MSL. **Rwy 22**, trees beginning 6' from DER, 494' right of centerline, up to 100' AGL/999' MSL. Trees beginning 374' from DER, 208' left of centerline, up to 100' AGL/1019' MSL. Pole 4382' from DER, 1383' left of centerline, 110' AGL/1080' MSL. **Rwy 27**, trees beginning 15' from DER, 453' left of centerline, up to 100' AGL/1059' MSL. Trees beginning 456' from DER, 438' right of centerline, up to 100' AGL/1049' MSL.

## LEXINGTON-PARSONS, TN

### BEECH RIVER RGNL (PVE)

TAKEOFF MINIMUMS AND (OBSTACLE)  
DEPARTURE PROCEDURES  
ORIG 07298 (FAA)

TAKEOFF OBSTACLE NOTES: **Rwy 1**, trees beginning 269' from DER, 179' right of centerline, up to 100' AGL/619' MSL. Trees beginning 258' from DER, 224' left of centerline, up to 100' AGL/599' MSL. **Rwy 19**, trees beginning 157' from DER, 259' right of centerline, up to 100' AGL/579' MSL. Trees beginning 227' from DER, 299' left of centerline, up to 100' AGL/549' MSL.

## LIVINGSTON, TN

### LIVINGSTON MUNI (8A3)

TAKEOFF MINIMUMS AND (OBSTACLE)  
DEPARTURE PROCEDURES  
AMDT 2 09295 (FAA)

DEPARTURE PROCEDURE: **Rwy 21**, climb heading 215° to 1900 before proceeding on course.

TAKEOFF OBSTACLE NOTES: **Rwy 3**, trees beginning from 173' from DER, 133' left of centerline, up to 100' AGL/1499' MSL. Trees beginning from 282' from DER, 180' right of centerline, up to 100' AGL/1439' MSL. **Rwy 21**, trees beginning from 60' from DER, 186' right of centerline, up to 100' AGL/1459' MSL.

24 MAY 2018 to 21 JUN 2018

24 MAY 2018 to 21 JUN 2018

# TAKEOFF MINIMUMS, (OBSTACLE) DEPARTURE PROCEDURES, AND DIVERSE VECTOR AREA (RADAR VECTORS)

18088

SE-1


**TAKEOFF MINIMUMS, (OBSTACLE) DEPARTURE PROCEDURES, AND**

  
**DIVERSE VECTOR AREA (RADAR VECTORS)**

18088

**LONDON, KY**

LONDON-CORBIN AIRPORT-MAGEE  
FIELD (LOZ)

TAKEOFF MINIMUMS AND (OBSTACLE)  
DEPARTURE PROCEDURES

AMDT 3A 13122 (FAA)

TAKEOFF MINIMUMS: **Rwy 6**, 500-2 or std. w/ min.  
climb of 449' per NM to 1900.

TAKEOFF OBSTACLE NOTES: **Rwy 6**, tree 53' from  
DER, 319' left of centerline, 40' AGL/1218' MSL. Pole  
127' from DER, 467' left of centerline, 40' AGL/1203'  
MSL. Pole 130' from DER, 336' left of centerline, 40'  
AGL/1207' MSL. Trees beginning 251' from DER, 336'  
left of centerline, up to 60' AGL/1221' MSL. Trees  
beginning 577' from DER, 337' right of centerline, up to  
60' AGL/1216' MSL. Trees beginning 608' from DER,  
62' left of centerline, up to 100' AGL/1256' MSL. Tree  
1300' from DER, 700' left of centerline, 100' AGL/1264'  
MSL. Tree 1418' from DER, 441' right of centerline, 80'  
AGL/1228' MSL. Trees beginning 1613' from DER,  
224' right of centerline, up to 100' AGL/1247' MSL.  
Trees beginning 1.3 NM from DER, 444' left of  
centerline, up to 100' AGL/1419' MSL. Trees beginning  
1.5 NM from DER, 716' left of centerline, up to 100'  
AGL/1616' MSL. Tower 1.5 NM from DER, 1371' left of  
centerline, 120' AGL/1659' MSL. Trees beginning 1.5  
NM from DER, 2356' right of centerline, up to 100'  
AGL/1476' MSL. Trees beginning 1.6 NM from DER,  
1505' right of centerline, up to 100' AGL/1644' MSL.  
**Rwy 24**, trees beginning 5' from DER, 312' left of  
centerline, up to 60' AGL/1258' MSL. Tree 153' from  
DER, 471' right of centerline, 60' AGL/1258' MSL.  
Power lines beginning 160' from DER, 384' left of  
centerline extending 263' from DER, 536' right of  
centerline, up to 40' AGL/1249' MSL. Trees beginning  
351' from DER, 391' left of centerline, up to 60'  
AGL/1273' MSL. Trees beginning 581' from DER, 502'  
right of centerline, up to 100' AGL/1288' MSL. Trees  
beginning 1122' from DER, 532' left of centerline, up to  
100' AGL/1279' MSL. Trees beginning 1155' from  
DER, 76' left of centerline, up to 100' AGL/1275' MSL.  
Trees beginning 1249' from DER, 75' right of  
centerline, up to 100' AGL/1263' MSL.

**LOUISVILLE, KY**

BOWMAN FIELD (LOU)

TAKEOFF MINIMUMS AND (OBSTACLE)  
DEPARTURE PROCEDURES

AMDT 4 10350 (FAA)

TAKEOFF MINIMUMS: **Rwy 33**, 300-1¼ or std. w/ min.  
climb of 205' per NM to 900, or alternatively, with  
standard takeoff minimums and a normal 200' per NM  
climb gradient, takeoff must occur no later than 1300'  
prior to DER.

TAKEOFF OBSTACLE NOTES: **Rwy 6**, trees beginning  
361' from DER, 143' left of centerline, up to 96' AGL/625'  
MSL. Trees beginning 372' from DER, 32' right of  
centerline, up to 90' AGL/619' MSL. **Rwy 15**, trees  
beginning 880' from DER, 112' left of centerline, up to 69'  
AGL/588' MSL. Vehicles on road and trees beginning  
153' from DER, 107' right of centerline, up to 85'  
AGL/594' MSL. **Rwy 24**, trees beginning 137' from  
DER, 77' left of centerline, up to 94' AGL/643' MSL.  
Vehicles on road and trees beginning 189' from DER, 4'  
right of centerline, up to 84' AGL/643' MSL. Tower 4828'  
from DER, 1728' right of centerline, 140' AGL/690' MSL.  
**Rwy 33**, trees beginning 198' from DER, 1' left of  
centerline, up to 53' AGL/602' MSL. Trees beginning 184'  
from DER, 264' right of centerline, up to 82' AGL/621'  
MSL. Antenna on stack 1.5 NM from DER, 1421' right of  
centerline, 221' AGL/770' MSL.

**LOUISVILLE INTL-STANDIFORD FIELD  
(SDF)**

TAKEOFF MINIMUMS AND (OBSTACLE)  
DEPARTURE PROCEDURES

AMDT 5 12208 (FAA)

TAKEOFF MINIMUMS: **Rwy 17L**, std. w/min. climb of 230'  
per NM to 1300. **Rwy 17R**, std. w/min. climb of 260' per  
NM to 1300.

TAKEOFF OBSTACLE NOTES: **Rwy 11**, tree 1561' from  
DER, 855' left of centerline, 76' AGL/556' MSL. Sign  
928' from DER, 705' left of centerline, 25' AGL/505' MSL.  
Tree 1466' from DER, 848' right of centerline, 72'  
AGL/552' MSL. **Rwy 17L**, light tower 622' from DER,  
643' right of centerline, 25' AGL/496' MSL. Obstruction  
light on DME 498' from DER, 299' right of centerline, 14'  
AGL/485' MSL. Multiple trees and lighted towers  
beginning 328' from DER, 302' left of centerline, up to 89'  
AGL/560' MSL. Sign 723' from DER, 637' left of  
centerline, 26' AGL/497' MSL. **Rwy 17R**, pole 748' from  
DER, 664' right of centerline, 24' AGL/505' MSL. Pole  
666' from DER, 336' left of centerline, 24' AGL/496' MSL.  
**Rwy 29**, tree 1257' from DER, 809' left of centerline,  
69' AGL/550' MSL. Stack 1213' from DER, 329' left of  
centerline, 37' AGL/518' MSL. Poles beginning 873' from  
DER, 223' left of centerline, up to 29' AGL/509' MSL.  
Trees beginning 1033' from DER, 73' right of centerline,  
73' AGL/571' MSL. Obstruction light on glideslope 474'  
from DER, 398' right of centerline, 49' AGL/526' MSL.  
Pole 1255' from DER, 760' right of centerline, 29'  
AGL/515' MSL. **Rwy 35L**, Poles beginning 686' from  
DER, 116' left of centerline, up to 38' AGL/541' MSL.  
Lighted tower 258' from DER, 261' left of centerline 44'  
AGL/500' MSL. Poles beginning 270' from DER, 230'  
right of centerline, up to 64' AGL/526' MSL. Trees  
beginning 1596' from DER, 260' right of centerline up to  
86' AGL/560' MSL. **Rwy 35R**, Multiple trees and poles  
beginning 542' from DER, 303' right of centerline up to  
88' AGL/580' MSL.

24 MAY 2018 to 21 JUN 2018

24 MAY 2018 to 21 JUN 2018


**TAKEOFF MINIMUMS, (OBSTACLE) DEPARTURE PROCEDURES, AND**

  
**DIVERSE VECTOR AREA (RADAR VECTORS)**

18088

SE-1


**TAKEOFF MINIMUMS, (OBSTACLE) DEPARTURE PROCEDURES, AND**

  
**DIVERSE VECTOR AREA (RADAR VECTORS)**

18088

**MADISONVILLE, KY**

MADISONVILLE RGNL (2I0)

TAKEOFF MINIMUMS AND (OBSTACLE)

DEPARTURE PROCEDURES

ORIG 08045 (FAA)

TAKEOFF OBSTACLE NOTES: **Rwy 5**, Vehicle on road 163' from DER, 525' right of centerline, 15' AGL/434' MSL. Vehicle on road 466' from DER, 597' left of centerline, 15' AGL/454' MSL. **Rwy 23**, Vehicle on road 563' from DER, 608' right of centerline, 15' AGL/464' MSL. Pole 910' from DER, 590' left of centerline, 98' AGL/537' MSL.

**MADISONVILLE, TN**

MONROE COUNTY (MNV)

TAKEOFF MINIMUMS AND (OBSTACLE)

DEPARTURE PROCEDURES

AMDT 3 03359 (FAA)

DEPARTURE PROCEDURE: **Rwy 5**, climb via runway heading and VXV VORTAC R-231 northeast bound to 3100' before turning. **Rwy 23**, climb via runway heading and VXV VORTAC R-231 southwest bound to 2700' before turning.

TAKEOFF OBSTACLE NOTES: **Rwy 5**, building 2340' from DER, 263' left of centerline, 88' AGL/1089' MSL.

**Rwy 23**, trees 1188' from DER, 211' left of centerline, 74' AGL/1105' MSL.

**MARION, KY**

MARION-CRITTENDEN COUNTY (5M9)

TAKEOFF MINIMUMS AND (OBSTACLE)

DEPARTURE PROCEDURES

AMDT 1 13066 (FAA)

TAKEOFF MINIMUMS: **Rwy 25**, 300-1½ or std. w/min. climb of 215' per NM to 900.

TAKEOFF OBSTACLE NOTES: **Rwy 7**, trees beginning 64' from DER, 281' left of centerline, up to 89' AGL/716' MSL. Fence post 93' from DER, 248' left of centerline, 6' AGL/632' MSL. Trees beginning 2656' from DER, left and right of centerline, up to 100' AGL/749' MSL. **Rwy 25**, trees beginning 123' from DER, 314' right of centerline, up to 52' AGL/701' MSL. Trees beginning 291' from DER, 303' left of centerline, up to 62' AGL/711' MSL. Pole 1150' from DER, 331' left of centerline, 35' AGL/686' MSL. Trees beginning 2034' from DER, left and right of centerline, up to 100' AGL/819' MSL.

**MAYFIELD, KY**

MAYFIELD GRAVES COUNTY (M25)

TAKEOFF MINIMUMS AND (OBSTACLE)

DEPARTURE PROCEDURES

AMDT 3 13178 (FAA)

TAKEOFF OBSTACLE NOTES: **Rwy 1**, poles and trees beginning 126' from DER, 324' right of centerline, up to 73' AGL/584' MSL. Vehicles on roadway beginning 466' from DER, 454' right of centerline, up to 15' AGL/550' MSL. Vertical structure 567' from DER, 467' right of centerline, 28' AGL/539' MSL. Trees beginning 795' from DER, 566' right of centerline, up to 84' AGL/595' MSL. Trees beginning 1508' from DER, left and right of centerline, up to 100' AGL/583' MSL. **Rwy 19**, rising terrain, vehicles on roadway and poles beginning 6' from DER, 105' right of centerline, up to 38' AGL/559' MSL. Vertical structure 384' from DER, 222' right of centerline, 10' AGL/531' MSL. Trees, poles and buildings beginning 441' from DER, 57' left of centerline, up to 58' AGL/569' MSL. Vertical structure 630' from DER, 88' right of centerline, 22' AGL/543' MSL. Trees, buildings and poles beginning 613' from DER, 2' right of centerline, up to 40' AGL/599' MSL. Vehicles on roadway beginning 630' from DER, 88' right of centerline, up to 15' AGL/543' MSL. Trees beginning 1589' from DER, 40' left of centerline, up to 100' AGL/639' MSL. Trees beginning 1663' from DER, 133' right of centerline, up to 86' AGL/614' MSL.

**MC MINNVILLE, TN**

WARREN COUNTY MEMORIAL (RNC)

TAKEOFF MINIMUMS AND (OBSTACLE)

DEPARTURE PROCEDURES

AMDT 2 18032 (FAA)

TAKEOFF OBSTACLE NOTES: **Rwy 23**, fence 198' from DER, 349' right of centerline, 11' AGL/1044' MSL. Tree, building beginning 246' from DER, 263' right of centerline, up to 16' AGL/1046' MSL. Tree 551' from DER, 641' left of centerline, 70' AGL/1117' MSL. Tree 904' from DER, 383' right of centerline, 70' AGL/1112' MSL. Tree, building, pole beginning 925' from DER, 340' left of centerline, up to 75' AGL/1130' MSL. Tree, pole, transmission line beginning 1218' from DER, 496' right of centerline, up to 90' AGL/1146' MSL. Tree, pole, transmission line, road beginning 1748' from DER, 113' right of centerline, up to 93' AGL/1169' MSL. Trees beginning 2289' from DER, 50' left of centerline, up to 105' AGL/1133' MSL. Tree, pole, transmission line, building beginning 2611' from DER, 223' left of centerline, up to 114' AGL/1139' MSL. Trees beginning 3101' from DER, 623' left of centerline, up to 125' AGL/1177' MSL.

24 MAY 2018 to 21 JUN 2018

24 MAY 2018 to 21 JUN 2018


**TAKEOFF MINIMUMS, (OBSTACLE) DEPARTURE PROCEDURES, AND**

  
**DIVERSE VECTOR AREA (RADAR VECTORS)**

18088

SE-1



# TAKEOFF MINIMUMS, (OBSTACLE) DEPARTURE PROCEDURES, AND DIVERSE VECTOR AREA (RADAR VECTORS)

18088

## MEMPHIS, TN

GENERAL DEWITT SPAIN (M01)  
TAKEOFF MINIMUMS AND (OBSTACLE)  
DEPARTURE PROCEDURES  
AMDT 4 12068 (FAA)

TAKEOFF MINIMUMS: **Rwy 17**, std. w/min. climb of 280' per NM to 1000, or 1100-2½ for climb in visual conditions.

DEPARTURE PROCEDURE: **Rwy 17**, climb heading 167° to 1000 before proceeding on course, or for climb in visual conditions, cross General Dewitt Spain Airport at or above 1200 before proceeding on course. **Rwy 35**, climb heading 347° to 1000 before turning right.

TAKEOFF OBSTACLE NOTES: **Rwy 17**, vehicles on roadway 354' from DER, 51' left and right of centerline, up to 15' AGL/239' MSL. Trees beginning 107' from DER, 491' left of centerline, up to 100' AGL/319' MSL. Tower 2.7 NM from DER, 3133' right of centerline, 465' AGL/735' MSL. **Rwy 35**, trees beginning 15' from DER, 388' right of centerline, up to 100' AGL/324' MSL. Trees beginning 1116' from DER, 17' left of centerline, up to 100' AGL/324' MSL. Rising terrain 2268' from DER, 592' left of centerline, 285' MSL.

## MEMPHIS, TN (CON'T)

MEMPHIS INTL (MEM)  
TAKEOFF MINIMUMS AND (OBSTACLE)  
DEPARTURE PROCEDURES  
AMDT 4A 17229 (FAA)

DEPARTURE PROCEDURE: **Rwy 36C**, climb heading 360° to 700 before turning left.

TAKEOFF OBSTACLE NOTES: **Rwy 9**, light pole 1497' from DER, 799' left of centerline, 43' AGL/342' MSL.

**Rwy 18R**, VORTAC and rod on pole beginning 3209' from DER, 1019' left of centerline, up to 43' AGL/412' MSL. Trees 3231' from DER, 1038' right of centerline, up to 87' AGL/406' MSL. **Rwy 27**, trees 4145' from DER, 1382' left of centerline, up to 112' AGL/361' MSL. **Rwy 36C**, light pole 1948' from DER, 928' right of centerline, 77' AGL/336' MSL.

## MIDDLESBORO, KY

MIDDLESBORO-BELL COUNTY (1A6)  
TAKEOFF MINIMUMS AND (OBSTACLE)  
DEPARTURE PROCEDURES  
ORIG 07186 (FAA)

TAKEOFF MINIMUMS: **Rwy 10**, std. w/ min. climb of 736' per NM to 3500, or 2500-3 for climb in visual conditions. **Rwy 28**, NA-obstacles.

DEPARTURE PROCEDURE: **Rwy 10**, climb via heading 103° to 3500 before proceeding on course. For climb in visual conditions: cross Middlesboro-Bell County Airport at or above 3500 before proceeding on course.

TAKEOFF OBSTACLE NOTES: **Rwy 10**, road and vehicle 264' from DER, on centerline, 17' AGL/1166' MSL. Trees 52' from DER, 223' right of centerline, 100' AGL/1249' MSL. Trees 617' from DER, 100' AGL/1249' MSL. Tower 5066' from DER, 1033' left of centerline, 198' AGL/1335' MSL. Trees 1 NM from DER, 1354' right of centerline, 100' AGL/1379' MSL. Trees 1.67 NM from DER, 1900' left of centerline, 100' AGL/1599' MSL. Numerous trees beginning 2 NM from DER, 3200' left and right of centerline, upsloping on Cumberland Mountain, up to 100' AGL/2499' MSL. 200' AAO 3.15 NM from DER, 1191' left of centerline, 200' AGL/2899' MSL.

## MILLINGTON, TN

CHARLES W BAKER (2M8)  
TAKEOFF MINIMUMS AND (OBSTACLE)  
DEPARTURE PROCEDURES  
AMDT 1 11237 (FAA)

DEPARTURE PROCEDURE: **Rwy 18**, climb heading 185° to 1500 before turning left.

TAKEOFF OBSTACLE NOTES: **Rwy 18**, trees beginning 164' from DER, 423' right of centerline, up to 100' AGL/329' MSL. Trees beginning 1292' from DER, 496' left of centerline, up to 100' AGL/379' MSL. Power line and poles beginning 2114' from DER, left to right of centerline, up to 105' AGL/331' MSL. **Rwy 36**, trees beginning 173' from DER, 500' right of centerline, up to 100' AGL/368' MSL. Trees beginning 2377' from DER, 19' left of centerline, up to 100' AGL/352' MSL.

## MILLINGTON RGNL JETPORT (NQA)

TAKEOFF MINIMUMS AND (OBSTACLE)  
DEPARTURE PROCEDURES  
ORIG-A 17117 (FAA)

TAKEOFF MINIMUMS: **Rwy 4**, 300-1¼ or standard w/ min. climb of 235' per NM to 600, or alternatively with standard takeoff minimums and a normal 200' per NM climb gradient, takeoff must occur no later than 1900 feet prior to DER.

TAKEOFF OBSTACLE NOTES: **Rwy 4**, tree 62' from DER, 339' left of centerline, 365' MSL. Trees beginning 79' from DER, 487' left of centerline, up to 382' MSL. Ground 97' from DER, 326' right of centerline, 323' MSL. Ground 290' from DER, 501' right of centerline, 328' MSL. Fence beginning 318' from DER, 488' right of centerline, up to 7' AGL/336' MSL. Tree 587' from DER, 591' right of centerline, 368' MSL. Tree 1967' from DER, 119' right of centerline, 370' MSL. Tree 2198' from DER, 319' right of centerline, 376' MSL. Tree 2242' from DER, 924' left of centerline, 409' MSL. Tree 2354' from DER, 865' right of centerline, 410' MSL. Trees beginning 2382' from DER, 910' right of centerline, up to 428' MSL. Trees beginning 2408' from DER, 952' left of centerline, up to 422' MSL. Trees beginning 2670' from DER, 1202' right of centerline, up to 431' MSL. Trees beginning 3274' from DER, 268' right of centerline, up to 444' MSL. Trees beginning 3664' from DER, 1121' left of centerline, up to 426' MSL. Tree 3867' from DER, 1021' left of centerline, 428' MSL. Trees beginning 3920' from DER, 802' left of centerline, up to 433' MSL. Trees beginning 4022' from DER, 254' left of centerline, up to 434' MSL. Trees beginning 4191' from DER, 132' left of centerline, up to 448' MSL. Trees beginning 4194' from DER, 105' right of centerline, up to 455' MSL. Trees beginning 4255' from DER, 19' left of centerline, up to 457' MSL. Trees beginning 4293' from DER, 81' right of centerline, up to 456' MSL. Trees beginning 4511' from DER, 357' right of centerline, up to 459' MSL. Trees beginning 4751' from DER, 585' right of centerline, up to 471' MSL. Tree 5332' from DER, 1693' left of centerline, 465' MSL. Trees beginning 5356' from DER, 1674' left of centerline, up to 470' MSL. Tree 5476' from DER, 1873' left of centerline, 484' MSL. Trees beginning 5606' from DER, 1797' left of centerline, up to 489' MSL. **Rwy 22**, ground 44' from DER, 484' left of centerline, 278' MSL. Tree 197' from DER, 497' left of centerline, 289' MSL. Trees beginning 1368' from DER, 291' right of centerline, up to 335' MSL. Trees beginning 3439' from DER, 1257' right of centerline, up to 371' MSL. Tree 3835' from DER, 670' right of centerline, 374' MSL.

24 MAY 2018 to 21 JUN 2018

24 MAY 2018 to 21 JUN 2018

# TAKEOFF MINIMUMS, (OBSTACLE) DEPARTURE PROCEDURES, AND DIVERSE VECTOR AREA (RADAR VECTORS)

18088

SE-1

# TAKEOFF MINIMUMS, (OBSTACLE) DEPARTURE PROCEDURES, AND DIVERSE VECTOR AREA (RADAR VECTORS)

18088

## MONTICELLO, KY

### WAYNE COUNTY (EKQ)

#### TAKEOFF MINIMUMS AND (OBSTACLE) DEPARTURE PROCEDURES

AMDT 2 12124 (FAA)

TAKEOFF MINIMUMS: **Rwy 3**, 300-1¼. **Rwy 21**, std. w/ min. climb of 275' per NM to 1900 or 1400-3 for climb in visual conditions.

DEPARTURE PROCEDURE: **Rwy 3**, climb heading 039° to 1700 before proceeding on course. **Rwy 21**, climb heading 219° to 2000 before proceeding on course or for climb in visual conditions, cross Wayne County airport at or above 2200 before proceeding on course. When executing VCOA, notify ATC prior to departure.

TAKEOFF OBSTACLE NOTES: **Rwy 3**, trees beginning 1292' from DER, 533' right of centerline, up to 100' AGL/1139' MSL. Trees beginning 1459' from DER, 16' left of centerline, up to 100' AGL/1179' MSL. Vehicles on roadway beginning 1402' from DER, 329' right of centerline, up to 17' AGL/1096' MSL. **Rwy 21**, vehicles on roadway beginning 570' from DER, 469' left of centerline, up to 17' AGL/996' MSL. Trees beginning 932' from DER, 285' right of centerline, up to 100' AGL/1059' MSL. Trees beginning 1254' from DER, 200' left of centerline, up to 100' AGL/1059' MSL.

## MOREHEAD, KY

### MOREHEAD - ROWAN COUNTY CLYDE

#### A. THOMAS RGNL (SYM)

#### TAKEOFF MINIMUMS AND (OBSTACLE) DEPARTURE PROCEDURES

AMDT 1 14261 (FAA)

TAKEOFF OBSTACLE NOTES: **Rwy 2**, trees 777' from DER, 494' left of centerline, up to 77' AGL/1096' MSL. Trees beginning 5041' from DER, 1228' right of centerline, 100' AGL/1139' MSL. **Rwy 20**, vehicles on roadway, beginning 7' from DER, left and right of centerline, up to 15' AGL/1054' MSL. Trees 432' from DER, 534' right of centerline, up to 75' AGL/1054' MSL. Trees 1595' from DER, 716' left of centerline, up to 71' AGL/1090' MSL. Trees beginning 3093' from DER, 954' right of centerline, up to 100' AGL/1159' MSL. Tree 5021' from DER, 1767' right of centerline, 100' AGL/1179' MSL.

## MORRISTOWN, TN

### MOORE-MURRELL (MOR)

#### TAKEOFF MINIMUMS AND (OBSTACLE) DEPARTURE PROCEDURES

AMDT 6 10210 (FAA)

TAKEOFF MINIMUMS: **Rwy 5**, std. w/ min. climb of 354' per NM to 2500 or 1000-2½ for climb in visual conditions.

DEPARTURE PROCEDURE: **Rwy 5**, for climb in visual conditions cross Moore-Murrell airport at or above 2200 then via XVV VORTAC R-060 inbound to 4000 before proceeding on course. **Rwy 23**, climb heading 233° and XVV VORTAC R-060 inbound to 4000 before proceeding on course.

TAKEOFF OBSTACLE NOTES: **Rwy 5**, pole 2187' from DER, 517' right of centerline, up to 16' AGL/1356' MSL. Vehicle on road 2019' from DER, 1018' left of centerline, up to 17' AGL/1337' MSL. Windssock 66' from DER, 189' left of centerline, up to 8' AGL/1282' MSL. Railroad at DER, 295' right of centerline, up to 15' AGL/1288' MSL. Trees beginning 1065' from DER, 464' left of centerline, up to 54' AGL/1414' MSL. Trees beginning 191' from DER, 274' right of centerline, up to 51' AGL/1311' MSL. **Rwy 23**, pole 1442' from DER, 451' right of centerline, up to 54' AGL/1367' MSL. Vehicle on road 23' from DER, 337' left of centerline, up to 17' AGL/1367' MSL. Vehicle on road 1246' from DER, 113' right of centerline, up to 17' AGL/1369' MSL. Trees beginning 1774' from DER, 753' right of centerline, up to 100' AGL/1460' MSL. Buildings 1583' from DER, 690' right of centerline, up to 30' AGL/1370' MSL.

## MOUNT STERLING, KY

### MOUNT STERLING-MONTGOMERY COUNTY (IOB)

#### TAKEOFF MINIMUMS AND (OBSTACLE) DEPARTURE PROCEDURES

AMDT 1 10098 (FAA)

TAKEOFF MINIMUMS: **Rwy 3**, 500-3 or std. with a min. climb of 225' per NM to 1600.

TAKEOFF OBSTACLE NOTES: **Rwy 3**, tower 2.6 NM from DER, 1674' right of centerline, 415' AGL/1425' MSL. Trees beginning 33' from DER, 494' left of centerline, up to 100' AGL/1029' MSL. Trees beginning 271' from DER, 568' right of centerline, up to 100' AGL/1019' MSL. **Rwy 21**, trees beginning at DER, 289' left of centerline, up to 100' AGL/1149' MSL. Trees beginning 301' from DER, 380' right of centerline, up to 100' AGL/1109' MSL.

## MOUNTAIN CITY, TN

### JOHNSON COUNTY (6A4)

#### TAKEOFF MINIMUMS AND (OBSTACLE) DEPARTURE PROCEDURES

ORIG 09211 (FAA)

TAKEOFF MINIMUMS: **Rwy 6**, 3400-3 for climb in visual conditions. **Rwy 24**, 1100-3 w/min. climb of 510' per NM to 5700, or 3400-3 for climb in visual conditions.

DEPARTURE PROCEDURE: **Rwy 6**, for climb in visual conditions (NA at night): cross Johnson County Airport at or above 5500 MSL before proceeding on course.

**Rwy 24**, for climb in visual conditions (NA at night): cross Johnson County airport at or above 5500 MSL before proceeding on course.

24 MAY 2018 to 21 JUN 2018

24 MAY 2018 to 21 JUN 2018

# TAKEOFF MINIMUMS, (OBSTACLE) DEPARTURE PROCEDURES, AND DIVERSE VECTOR AREA (RADAR VECTORS)

18088

SE-1

# TAKEOFF MINIMUMS, (OBSTACLE) DEPARTURE PROCEDURES, AND DIVERSE VECTOR AREA (RADAR VECTORS)

18088

## MURFREESBORO, TN

MURFREESBORO MUNI (MBT)  
TAKEOFF MINIMUMS AND (OBSTACLE)  
DEPARTURE PROCEDURES  
AMDT 4 18088 (FAA)

TAKEOFF MINIMUMS: **Rwy 18**, 400-2½', or std. w/ min. climb of 205' per NM to 1000.

DEPARTURE PROCEDURE: **Rwy 18**, climb heading 184° to 1300 before turning right.

TAKEOFF OBSTACLE NOTES: **Rwy 18**, trees and building beginning 194' from DER, 113' left of centerline, up to 661' MSL. Trees beginning 1487' from DER, 140' right and 1084' left of centerline, up to 688' MSL. Tower 1.9 NM from DER, 3202' right of centerline, 335' AGL/917' MSL. **Rwy 36**, trees beginning 357' from DER, 100' right of centerline, up to 654' MSL. Poles beginning 637' from DER, 488' left of centerline, up to 72' AGL/674' MSL.

## MURRAY, KY

KYLE-OAKLEY FIELD (CEY)  
TAKEOFF MINIMUMS AND (OBSTACLE)  
DEPARTURE PROCEDURES  
AMDT 4 11349 (FAA)

TAKEOFF OBSTACLE NOTES: **Rwy 5**, trees and pole beginning 665' from DER, 473' right of centerline, up to 100' AGL/679' MSL. Trees beginning 951' from DER, 346' left of centerline, up to 110' AGL/679' MSL. **Rwy 23**, tree 16' from DER, 407' right of centerline, 69' AGL/660' MSL. Trees beginning 144' from DER, 417' left of centerline, up to 85' AGL/689' MSL.

## NASHVILLE, TN

JOHN C TUNE (JWN)  
TAKEOFF MINIMUMS AND (OBSTACLE)  
DEPARTURE PROCEDURES  
AMDT 2 15288 (FAA)

TAKEOFF MINIMUMS: **Rwy 2**, std. w/min. climb of 207' per NM to 1500, or alternatively, with standard takeoff minimums and a normal 200' per NM climb gradient, departure must occur no later than 1900' prior to DER. DEPARTURE PROCEDURE: **Rwy 2**, climb heading 018° to 2300 before turning right. **Rwy 20**, climb heading 198° to 2400 before proceeding on course.

VCOA: **Rwy 2**, obtain ATC approval for climb in visual conditions when requesting IFR clearance. Climb in visual conditions to Cross John C Tune Airport at or above 2300 before proceeding on course.

TAKEOFF OBSTACLE NOTES: **Rwy 2**, rising terrain beginning 454' from DER, from 492' left of centerline to 233' right of centerline, up to 539' MSL. Trees beginning 838' from DER, from 633' right of centerline, up to 68' AGL/548' MSL. Trees beginning 1326' from DER, from 693' left of centerline, up to 56' AGL/556' MSL. Trees beginning 1607' from DER, from 627' left of centerline, up to 86' AGL/565' MSL. Trees beginning, 1918' from DER, from 554' left of centerline, up to 86' AGL/574' MSL. **Rwy 20**, runway end lights beginning 10' from DER, 10' right of centerline and 11' left of centerline, 3' AGL/459' MSL. Trees beginning 1145' from DER, from 490' left of centerline, up to 62' AGL/502' MSL. Trees beginning 1655' from DER, left and right of centerline, up to 88' AGL/508' MSL. Transmission towers beginning 2983' from DER, from 746' left of centerline, up to 144' AGL/550' MSL.

## NASHVILLE, TN (CON'T)

NASHVILLE INTL (BNA)  
TAKEOFF MINIMUMS AND (OBSTACLE)  
DEPARTURE PROCEDURES  
AMDT 8 12320 (FAA)

TAKEOFF MINIMUMS: **Rwy 31**, std. w/ min. climb of 240' per NM to 2600.

DEPARTURE PROCEDURE: **Rwy 20L**, climb heading 201° to 1400 before turning right. **Rwys 20C, 20R** climb heading 201° to 1800 before turning right.

TAKEOFF OBSTACLE NOTES: **Rwy 2L**, trees beginning 203' from DER, 489' right of centerline, up to 60' AGL/576' MSL. **Rwy 13**, blast fence obstruction light 335' from DER, 64' left of centerline, 6' AGL/595' MSL. Trees beginning 2852' from DER, 28' right of centerline, up to 60' AGL/685' MSL. Pole 3761' from DER, 726' right of centerline, 60' AGL/689' MSL. **Rwy 20C**, trees beginning 2089' from DER, 934' right of centerline, up to 60' AGL/623' MSL. **Rwy 20L**, trees beginning 1844' from DER, 720' left of centerline, up to 60' AGL/639' MSL. **Rwy 20R**, flagpole 1298' from DER, 777' right of centerline, 37' AGL/636' MSL. Building 2183' from DER, 1083' right of centerline, 91' AGL/680' MSL. **Rwy 31**, ground 2' from DER, 498' left of centerline, 541' MSL. LOC obstruction light 303' from DER, on centerline, 48' AGL/547' MSL. Blast fence obstruction light 382' from DER, 50' left of centerline, 30' AGL/569' MSL. Trees beginning 789' from DER, 331' right of centerline, up to 60' AGL/602' MSL. Pole 1012' from DER, 429' left of centerline, 29' AGL/578' MSL. Transmission tower 1882' from DER, 219' right of centerline, 61' AGL/610' MSL. Pole 2037' from DER, 422' right of centerline, 47' AGL/596' MSL. Transmission tower 2778' from DER, 83' left of centerline, 91' AGL/630' MSL.

## ONEIDA, TN

SCOTT MUNI (SCX)  
TAKEOFF MINIMUMS AND (OBSTACLE)  
DEPARTURE PROCEDURES  
ORIG 02276 (FAA)

TAKEOFF OBSTACLE NOTES: **Rwy 5**, tree 2800' from DER, 600' right of centerline, 69' AGL/1605' MSL. **Rwy 23**, pole 950' from DER, on centerline, 42' AGL/1575' MSL. Power line 2938' from DER, 450' right of centerline, 142' AGL/1660' MSL.

24 MAY 2018 to 21 JUN 2018

24 MAY 2018 to 21 JUN 2018

# TAKEOFF MINIMUMS, (OBSTACLE) DEPARTURE PROCEDURES, AND DIVERSE VECTOR AREA (RADAR VECTORS)

18088

SE-1

# TAKEOFF MINIMUMS, (OBSTACLE) DEPARTURE PROCEDURES, AND DIVERSE VECTOR AREA (RADAR VECTORS)

18088

## OWENSBORO, KY

OWENSBORO-DAVISS COUNTY RGNL  
(OWB)

TAKEOFF MINIMUMS AND (OBSTACLE)  
DEPARTURE PROCEDURES

AMDT 5A 18088 (FAA)

TAKEOFF MINIMUMS: **Rwy 36**, 400-2 or std. w/ min. climb of 330' per NM to 1000.

DEPARTURE PROCEDURE: **Rwy 36**, climb heading 002° to 1000 before proceeding on course.

TAKEOFF OBSTACLE NOTES: **Rwy 6**, antenna, windsock, poles, and buildings beginning 289' from DER, 163' left of centerline, up to 40' AGL/444' MSL. Trees beginning 1489' from DER, 429' right of centerline, up to 65' AGL/471' MSL. Steeple, poles, and trees beginning 1835' from DER, 204' left of centerline, up to 85' AGL/491' MSL. **Rwy 18**, rising terrain beginning 223' from DER, 555' right of centerline, up to 0' AGL/403' MSL. **Rwy 24**, trees beginning 1379' from DER, 81' right of centerline, up to 80' AGL/482' MSL. Trees beginning 2589' from DER, 964' left of centerline, up to 86' AGL/485' MSL. **Rwy 36**, tanks, trees, and buildings beginning 395' from DER, 496' left of centerline, up to 29' AGL/443' MSL. Trees beginning 478' from DER, 500' right of centerline, up to 25' AGL/439' MSL. Towers beginning 1.5 NM from DER, 2940' right of centerline, up to 406' AGL/805' MSL.

## PADUCAH, KY

BARKLEY RGNL (PAH)

TAKEOFF MINIMUMS AND (OBSTACLE)  
DEPARTURE PROCEDURES

AMDT 3 06271 (FAA)

TAKEOFF OBSTACLE NOTES: **Rwy 4**, multiple trees and bushes beginning 131' from DER, 13' left of centerline, up to 100' AGL/452' MSL. Multiple trees beginning 697' from DER, 19' right of centerline, up to 100' AGL/464' MSL. Pole 1301' from DER, 316' right of centerline, up to 17' AGL/415' MSL. **Rwy 14**, multiple trees beginning 858' from DER, 77' left of centerline, up to 100' AGL/487' MSL. Road 551' from DER, 144' left of centerline, 17' AGL/422' MSL. Tree 788' from DER, 13' right of centerline, up to 100' AGL/439' MSL. Terrain 13' from DER, 320' right of centerline, 0' AGL/404' MSL. **Rwy 22**, multiple terrain and trees beginning 128' from DER, 30' left of centerline, up to 100' AGL/507' MSL. Road 981' from DER, 692' right of centerline, 17' AGL/444' MSL. Terrain 76' from DER, 3' right of centerline, 0' AGL/420' MSL. Terrain 25' from DER, 388' right of centerline, 0' AGL/411' MSL. **Rwy 32**, multiple trees beginning 376' from DER, 173' right of centerline, up to 100' AGL/458' MSL. Multiple trees and terrain beginning 31' from DER, 42' left of centerline, up to 100' AGL/462' MSL.

## PARIS, TN

HENRY COUNTY (PHT)

TAKEOFF MINIMUMS AND (OBSTACLE)  
DEPARTURE PROCEDURES

ORIG 10070 (FAA)

TAKEOFF OBSTACLE NOTES: **Rwy 2**, vehicle on road 772' from DER, 93' right of centerline, up to 15' AGL/589' MSL. Trees beginning 1232' from DER, 258' left of centerline, up to 100' AGL/669' MSL. **Rwy 20**, tree 2808' from DER, 630' right of centerline, 80' AGL/651' MSL. Rising terrain beginning 274' from DER, 388' left of centerline, 604' MSL.

## PIKEVILLE, KY

PIKE COUNTY-HATCHER FIELD (PBX)

TAKEOFF MINIMUMS AND (OBSTACLE)  
DEPARTURE PROCEDURES

ORIG 09127 (FAA)

TAKEOFF MINIMUMS: **Rwy 9**, 300-1 or std. w/ min. climb of 453' per NM to 2300 or 1000-3 for climb in visual conditions.

DEPARTURE PROCEDURE: **Rwy 9**, for climb in visual conditions: cross Pike County-Hatcher Field airport at or above 2300 before proceeding on course.

TAKEOFF OBSTACLE NOTES: **Rwy 9**, tree 4788' from DER, 1173' right of centerline, 20' AGL/1739' MSL. Multiple trees beginning 2702' from DER, 654' left of centerline and 965' right of centerline, up to 20' AGL/1770' MSL.

## PINE KNOT, KY

MC CREARY COUNTY (18I)

TAKEOFF MINIMUMS AND (OBSTACLE)  
DEPARTURE PROCEDURES

ORIG 14317 (FAA)

DEPARTURE PROCEDURE: **Rwy 4**, climb heading 040° to 1900 before turning right. **Rwy 22**, climb heading 220° to 2000 before turning left.

TAKEOFF OBSTACLE NOTES: **Rwy 4**, trees beginning 73' from DER, 15' left of centerline, 218' right of centerline, up to 100' AGL/1439' MSL. **Rwy 22**, trees beginning 473' from DER, 189' left of centerline, 380' right of centerline, up to 100' AGL/1499' MSL.

## PORTLAND, TN

PORTLAND MUNI (1M5)

TAKEOFF MINIMUMS AND (OBSTACLE)  
DEPARTURE PROCEDURES

ORIG 07214 (FAA)

TAKEOFF OBSTACLE NOTES: **Rwy 1**, tree 501' from DER, 180' right of centerline, 100' AGL/839' MSL. Tree 1564' from DER, 507' left of centerline, 100' AGL/839' MSL. **Rwy 19**, multiple trees 673' from DER, 83' right of centerline, up to 100' AGL/919' MSL.

## PRESTONSBURG, KY

BIG SANDY RGNL (SJS)

TAKEOFF MINIMUMS AND (OBSTACLE)  
DEPARTURE PROCEDURES

AMDT 1A 13234 (FAA)

TAKEOFF OBSTACLE NOTES: **Rwy 21**, multiple trees and poles beginning 250' from DER, 11' right of centerline, up to 72' AGL/1272' MSL. Multiple trees and poles beginning 294' from DER, 35' left of centerline, up to 63' AGL/1283' MSL.

# TAKEOFF MINIMUMS, (OBSTACLE) DEPARTURE PROCEDURES, AND DIVERSE VECTOR AREA (RADAR VECTORS)

18088

SE-1

# TAKEOFF MINIMUMS, (OBSTACLE) DEPARTURE PROCEDURES, AND DIVERSE VECTOR AREA (RADAR VECTORS)

18088

## PRINCETON, KY

PRINCETON-CALDWELL COUNTY  
(2M0)

TAKEOFF MINIMUMS AND (OBSTACLE)  
DEPARTURE PROCEDURES

ORIG 13206 (FAA)

TAKEOFF MINIMUMS: **Rwy 5**, 300-1¼ or std. w/min. climb of 280' per NM to 900.

TAKEOFF OBSTACLE NOTES: **Rwy 5**, trees beginning 14' from DER, 434' right of centerline, up to 100' AGL/779' MSL. Trees beginning 314' from DER, 371' left of centerline, up to 58' AGL/577' MSL. **Rwy 23**, structures and terrain beginning 11' from DER, 198' right of centerline, up to 4' AGL/599' MSL. Structures and terrain beginning 40' from DER, 249' left of centerline, up to 4' AGL/593' MSL. Trees beginning 385' from DER, 48' right of centerline, up to 73' AGL/622' MSL. Trees beginning 421' from DER, 350' left of centerline, up to 68' AGL/647' MSL. Utility poles beginning 764' from DER, 176' right of centerline, up to 33' AGL/613' MSL.

## PULASKI, TN

ABERNATHY FIELD (GZS)

TAKEOFF MINIMUMS AND (OBSTACLE)  
DEPARTURE PROCEDURES

AMDT 4A 14149 (FAA)

TAKEOFF MINIMUMS: **Rwy 16**, 300-2¼ or std. w/ min. climb of 288' per NM to 1100. **Rwy 34**, 500-3 or std. w/min. climb of 461' per NM to 1300.

DEPARTURE PROCEDURE: **Rwy 16**, climb heading 156° to 1200 before proceeding on course.

TAKEOFF OBSTACLE NOTES: **Rwy 16**, ground and trees beginning 60' from DER, 159' right of centerline, up to 80' AGL/708' MSL. Trees beginning 374' from DER, 173' left of centerline, up to 80' AGL/681' MSL. Poles and conveyor beginning 937' from DER, 141' right of centerline, up to 75' AGL/705' MSL. Trees beginning 1170' from DER, 587' left of centerline, up to 80' AGL/694' MSL. Trees beginning 5236' from DER, 308' right of centerline, up to 80' AGL/778' MSL. **Rwy 34**, terrain and trees beginning 1' from DER, 189' left of centerline, up to 80' AGL/756' MSL. Trees beginning 1031' from DER, right and left of centerline, up to 80' AGL/1029' MSL.

## RICHMOND, KY

CENTRAL KENTUCKY RGNL (RGA)  
TAKEOFF MINIMUMS AND (OBSTACLE)  
DEPARTURE PROCEDURES

AMDT 1A 16203 (FAA)

DEPARTURE PROCEDURE: **Rwy 18**, climb heading 180° to 1900 before turning left.

TAKEOFF OBSTACLE NOTES: **Rwy 18**, trees beginning 19' from DER, 296' right of centerline, up to 1018' MSL. Tree 579' from DER, 563' left of centerline, 1038' MSL. Trees beginning 600' from DER, 479' left of centerline, 1048' MSL. Trees, beginning 824' from DER, 579' right of centerline, 1055' MSL. Trees, beginning 1637' from DER, 558' right of centerline, up to 1065' MSL. Tree 2293' from DER, 374' left of centerline, 1068' MSL. Tree 2355' from DER, 256' left of centerline, 1069' MSL. Trees, beginning 2422' from DER, 36' left of centerline, up to 1073' MSL. Trees, beginning 2443' from DER, 78' left of centerline, up to 1081' MSL. Tree 2468' from DER, 109' right of centerline, 1070' MSL. Tree 2605' from DER, 112' right of centerline, 1072' MSL. **Rwy 36**, fence beginning 5' from DER, 402' right of centerline, up to 968' MSL. Tree 21' from DER, 330' left of centerline, 978' MSL.

## ROCKWOOD, TN

ROCKWOOD MUNI (RKW)

TAKEOFF MINIMUMS AND (OBSTACLE)  
DEPARTURE PROCEDURES

AMDT 2 11349 (FAA)

DEPARTURE PROCEDURE: **Rwy 4**, climb heading 044° to 2500 before turning left. **Rwy 22**, climb heading 224° to 2600 before proceeding on course.

TAKEOFF OBSTACLE NOTES: **Rwy 4**, trees beginning 100' from DER, 234' right of centerline, up to 81' AGL/1646' MSL. Trees beginning 593' from DER, 557' left of centerline, up to 88' AGL/1649' MSL. **Rwy 22**, trees beginning 54' from DER, 101' left of centerline, up to 71' AGL/1676' MSL. Trees beginning 630' from DER, 136' right of centerline, up to 70' AGL/1691' MSL.

## ROGERSVILLE, TN

HAWKINS COUNTY (RVN)

TAKEOFF MINIMUMS AND (OBSTACLE)  
DEPARTURE PROCEDURES

AMDT 2A 14261 (FAA)

TAKEOFF MINIMUMS: **Rwy 7**, 400-2¼ or std. w/min. climb of 372' per NM to 1800. **Rwy 25**, 500-3 w/min. climb of 262' per NM to 2000 or 1700-3 for climb in visual conditions.

DEPARTURE PROCEDURE: **Rwy 7**, climb heading 068° to 3100 before proceeding on course. **Rwy 25**, climb heading 233° to 2800 before proceeding on course. For climb in visual conditions: cross Hawkins County Airport at or above 2800' MSL before proceeding on course.

TAKEOFF OBSTACLE NOTES: **Rwy 7**, terrain, house, driveways, and trees beginning 101' from DER, 26' left of centerline, up to 35' AGL/1354' MSL. Trees beginning 245' from DER, 194' right of centerline, up to 101' AGL/1340' MSL. Trees 1.1 NM from DER, 2338' left of centerline, up to 67' AGL/1566' MSL. Tower 2.2 NM from DER, 3130' left of centerline, 223' AGL/1589' MSL. **Rwy 25**, power line pole and trees beginning 76' from DER, 3' left of centerline, up to 87' AGL/1406' MSL. Terrain, fences, buildings, power lines, power line poles, and trees beginning 2' from DER, 133' right of centerline, up to 87' AGL/1406' MSL. Trees 2440' from DER, 1102' right of centerline, up to 99' AGL/1478' MSL. Trees 5831' from DER, 1642' right of centerline, up to 81' AGL/1600' MSL. Trees 2.5 NM from DER, 3446' right of centerline, up to 64' AGL/1713' MSL.

24 MAY 2018 to 21 JUN 2018

24 MAY 2018 to 21 JUN 2018

# TAKEOFF MINIMUMS, (OBSTACLE) DEPARTURE PROCEDURES, AND DIVERSE VECTOR AREA (RADAR VECTORS)

18088

SE-1

# TAKEOFF MINIMUMS, (OBSTACLE) DEPARTURE PROCEDURES, AND DIVERSE VECTOR AREA (RADAR VECTORS)

18088

## RUSSELLVILLE, KY

RUSSELLVILLE-LOGAN COUNTY (4M7)

TAKEOFF MINIMUMS AND (OBSTACLE)  
DEPARTURE PROCEDURES

AMDT 4 17341 (FAA)

TAKEOFF OBSTACLE NOTES: **Rwy 7**, tree, pole beginning 13' from DER, 242' left of centerline, up to 48' AGL/687' MSL. Tree 253' from DER, 347' right of centerline, 24' AGL/663' MSL. Trees beginning 303' from DER, 389' left of centerline, up to 84' AGL/721' MSL. Trees beginning 350' from DER, 346' right of centerline, up to 36' AGL/674' MSL. Tree 473' from DER, 309' left of centerline, 87' AGL/723' MSL. Trees beginning 1070' from DER, 432' left of centerline, up to 97' AGL/732' MSL. Tree 1418' from DER, 638' right of centerline, 61' AGL/693' MSL. Trees beginning 1438' from DER, 255' right of centerline, up to 86' AGL/718' MSL. Transmission line 2580' from DER, 493' right of centerline, 84' AGL/731' MSL. Catenary 2648' from DER, 2' right of centerline, 103' AGL/737' MSL. Catenary 2698' from DER, 376' left of centerline, 105' AGL/740' MSL. Transmission line 2752' from DER, 792' left of centerline, 101' AGL/742' MSL. Transmission line 2791' from DER, 791' left of centerline, 90' AGL/744' MSL. Tree 4099' from DER, 12' right of centerline, 101' AGL/762' MSL. **Rwy 25**, traverse way, terrain beginning 3' from DER, 332' right of centerline, up to 699' MSL. Pole 346' from DER, 532' right of centerline, 23' AGL/709' MSL.

## SABRE AAF (FORT CAMPBELL) (EOD),

CLARKSVILLE, TN

TAKEOFF MINIMUMS AND (OBSTACLE)  
DEPARTURE PROCEDURES

AMDT 1A, 16175

**Rwy 23**, Vehicle on road 134' from DER, 259' right of centerline, up to 15' AGL/604' MSL..

## SAVANNAH, TN

SAVANNAH-HARDIN COUNTY (SNH)

TAKEOFF MINIMUMS AND (OBSTACLE)  
DEPARTURE PROCEDURES

AMDT 3 09211 (FAA)

TAKEOFF MINIMUMS: **Rwy 19**, 400-2¼ or std. w/min. climb of 260' per NM to 1000.

TAKEOFF OBSTACLE NOTES: **Rwy 1**, trees beginning 1243' from DER, 101' right of centerline, up to 70' AGL/589' MSL. **Rwy 19**, trees beginning 973' from DER, left and right of centerline, up to 70' AGL/789' MSL.

## SELMER, TN

ROBERT SIBLEY (SZY)

TAKEOFF MINIMUMS AND (OBSTACLE)  
DEPARTURE PROCEDURES

ORIG 08269 (FAA)

TAKEOFF OBSTACLE NOTES: **Rwy 17**, terrain beginning 71' from DER, 154' right of centerline, up to 644' MSL. Trees beginning 104' from DER, 405' right of centerline, up to 76' AGL/695' MSL. Pole 1208' from DER, 810' right of centerline, 28' AGL/687' MSL. Pole 1857' from DER, 380' right of centerline, 45' AGL/664' MSL. **Rwy 35**, vehicles on roadway 107' from DER, on centerline, up to 15' AGL/622' MSL. Trees beginning 95' from DER, 206' right of centerline, up to 51' AGL/645' MSL.

## SEVIERVILLE, TN

GATLINBURG-PIGEON FORGE (GKT)

TAKEOFF MINIMUMS AND (OBSTACLE)  
DEPARTURE PROCEDURES

AMDT 4A 16147 (FAA)

TAKEOFF MINIMUMS: **Rwy 10**, std. w/min. climb of 320' per NM to 2900 or 900-2½ for climb in visual conditions. **Rwy 28**, 400-2¼ or std. w/min. climb of 210' per NM to 1500 or alternatively, with standard takeoff minimums and a normal 200' per NM climb gradient, takeoff must occur not later than 1200' prior to DER.

DEPARTURE PROCEDURE: **Rwy 10**, Climbing left turn on VXV VORTAC R-090 westbound to VXV VORTAC to 5000 before proceeding on course. For climb in visual conditions: cross Gatlinburg-Pigeon Forge airport westbound on VXV VORTAC R-102 at or above 1900 MSL to VXV VORTAC; continue climb to 5000 before proceeding on course. When executing VCOA, notify ATC prior to departure. **Rwy 28**, Climb on heading 282° and on VXV VORTAC R-102 to VXV VORTAC to 5000 before proceeding on course.

TAKEOFF OBSTACLE NOTES: **Rwy 10**, trees beginning 194' from DER, 378' right of centerline, up to 80' AGL/1123' MSL. Trees beginning 300' from DER, 350' left of centerline, up to 80' AGL/1123' MSL. Trees beginning 716' from DER, 255' left of centerline, up to 85' AGL/1131' MSL. Power line 941' from DER, 602' right of centerline, 55' AGL/1079' MSL. **Rwy 28**, trees beginning 184' from DER, 259' left of centerline, up to 45' AGL/1071' MSL. Trees beginning 949' from DER, 376' right of centerline, up to 45' AGL/1116' MSL. Tower 1119' from DER, 624' right of centerline, 78' AGL/1079' MSL. Tower 2.2 NM from DER, 2629' right of centerline, 175' AGL/1359' MSL.

## SHELBYVILLE, TN

BOMAR FIELD-SHELBYVILLE MUNI (SYI)

TAKEOFF MINIMUMS AND (OBSTACLE)  
DEPARTURE PROCEDURES

AMDT 1 08213 (FAA)

DEPARTURE PROCEDURE: **Rwy 18**, climb heading 180° to 1600 before turning left. **Rwy 36**, climb heading 345° to 1700 before turning right.

TAKEOFF OBSTACLE NOTES: **Rwy 18**, tree 81' from DER, 176' right of centerline, up to 100' AGL/890' MSL. Tree 86' from DER, 199' left of centerline, up to 100' AGL/880' MSL. **Rwy 36**, trees and terrain 505' from DER, 36' left of centerline, up to 7' AGL/806' MSL.

## SMITHVILLE, TN

SMITHVILLE MUNI (0A3)

TAKEOFF MINIMUMS AND (OBSTACLE)  
DEPARTURE PROCEDURES

ORIG 08157 (FAA)

TAKEOFF OBSTACLE NOTES: **Rwy 6**, trees and terrain beginning 76' from DER, 256' right of centerline, up to 100' AGL/1199' MSL. Trees beginning 733' from DER, 11' left of centerline up to 100' AGL/1119' MSL. **Rwy 24**, trees and terrain beginning 76' from DER, 8' left of centerline, up to 100' AGL/1119' MSL. Trees and terrain beginning 83' from DER, 162' right of centerline, up to 100' AGL/1179' MSL.

# TAKEOFF MINIMUMS, (OBSTACLE) DEPARTURE PROCEDURES, AND DIVERSE VECTOR AREA (RADAR VECTORS)

18088

SE-1

24 MAY 2018 to 21 JUN 2018

24 MAY 2018 to 21 JUN 2018

# TAKEOFF MINIMUMS, (OBSTACLE) DEPARTURE PROCEDURES, AND DIVERSE VECTOR AREA (RADAR VECTORS)

18088

## SMYRNA, TN

### SMYRNA (MQY)

#### TAKEOFF MINIMUMS AND (OBSTACLE) DEPARTURE PROCEDURES

AMDT 6 11293 (FAA)

TAKEOFF MINIMUMS: **Rwy 19**, 300-2 or std. w/min. climb of 205' per NM to 900, or alternatively, with standard takeoff minimums and a normal 200' per NM climb gradient. Takeoff must occur no later than 1300' prior to DER.

DEPARTURE PROCEDURE: **Rwy 1**, climb heading 006° to 1200 before turning northeast.

TAKEOFF OBSTACLE NOTES: **Rwy 1**, trees beginning 762' from DER, 79' right of centerline, up to 100' AGL/592' MSL. Trees beginning 1192' from DER, 194' left of centerline, up to 100' AGL/617' MSL. Vehicles on roadway 3918' from DER, 697' across centerline, up to 17' AGL/627' MSL. **Rwy 14**, trees beginning 1318' from DER, 808' left of centerline, up to 100' AGL/572' MSL. **Rwy 19**, vehicles on roadway 1493' from DER, crosses centerline, up to 17' AGL/566' MSL. Trees beginning 1547' from DER, 75' right of centerline, up to 100' AGL/608' MSL. Trees beginning 1647' from DER, 165' left of centerline, up to 100' AGL/659' MSL. Tower 1.7 NM from DER, 2316' right of centerline, 143' AGL/788' MSL. **Rwy 32**, trees beginning 69' from DER, 461' left of centerline, up to 100' AGL/635' MSL. Trees beginning 404' from DER, 64' right of centerline, up to 100' AGL/695' MSL.

## SOMERSET, KY

### LAKE CUMBERLAND RGNL (SME)

#### TAKEOFF MINIMUMS AND (OBSTACLE) DEPARTURE PROCEDURES

AMDT 4 12096 (FAA)

TAKEOFF MINIMUMS: **Rwy 5**, 500-2 or std. w/min. climb of 435' per NM to 1600. **Rwy 23**, 300-1¼ or std. w/min. climb of 375' per NM to 1300.

DEPARTURE PROCEDURE: **Rwy 5**, climb heading 048° to 2000 before proceeding on course. **Rwy 23**, climb heading 228° to 2000 before turning southbound.

TAKEOFF OBSTACLE NOTES: **Rwy 5**, power lines beginning 2350' from DER, on centerline, up to 100' AGL/1009' MSL. Trees beginning 5685' from DER, left and right of centerline, up to 100' AGL/1369' MSL. Tower 1.7 NM from DER, 500' right of centerline, 100' AGL/1300' MSL. **Rwy 23**, poles beginning 178' from DER, on centerline, up to 102' AGL/1111' MSL. Trees beginning 281' from DER, left and right of centerline, up to 81' AGL/1190' MSL. Buildings beginning 412' from DER, 336' right of centerline, up to 10' AGL/1089' MSL. Hills beginning 982' from DER, 102' left of centerline, up to 927' MSL. Signs beginning 1214' from DER, 45' right of centerline, 45' AGL/959' MSL. Antenna 2939' from DER, 54' left of centerline, 56' AGL/1005' MSL.

## SOMERVILLE, TN

### FAYETTE COUNTY (FYE)

#### TAKEOFF MINIMUMS AND (OBSTACLE) DEPARTURE PROCEDURES

AMDT 1 06271 (FAA)

TAKEOFF OBSTACLE NOTES: **Rwy 1**, multiple trees beginning 527' from DER, 343' right of centerline, up to 100' AGL/529' MSL. Multiple trees beginning 427' from DER, 8' left of centerline, up to 100' AGL/529' MSL. **Rwy 19**, multiple trees beginning 87' from DER, 306' right of centerline, up to 100' AGL/539' MSL. Multiple trees beginning 709' from DER, 455' left of centerline, up to 100' AGL/549' MSL.

## SPARTA, TN

### UPPER CUMBERLAND RGNL (SRB)

#### TAKEOFF MINIMUMS AND (OBSTACLE) DEPARTURE PROCEDURES

ORIG 09015 (FAA)

DEPARTURE PROCEDURE: **Rwy 4**, climb via heading 037° to 3400 before proceeding on course.

TAKEOFF OBSTACLE NOTES: **Rwy 4**, tree 56' from DER, 448' right of centerline, 100' AGL/1049' MSL. Tree 484' from DER, 574' right of centerline, 100' AGL/1056' MSL. **Rwy 22**, tree 1646' from DER, 775' left of centerline, 100' AGL/1069' MSL.

## SPRINGFIELD, KY

### LEBANON-SPRINGFIELD-GEORGE

#### HOERTER FIELD (612)

#### TAKEOFF MINIMUMS AND (OBSTACLE) DEPARTURE PROCEDURES

AMDT 3 16091 (FAA)

TAKEOFF OBSTACLE NOTES: **Rwy 11**, trees beginning 137' from DER, 506' right of centerline, up to 75' AGL/956' MSL. Trees beginning 217' from DER, 485' left of centerline, up to 90' AGL/897' MSL. Trees beginning 330' from DER, 21' left of centerline, up to 26' AGL/885' MSL. Trees beginning 764' from DER, 68' left of centerline, up to 80' AGL/891' MSL. **Rwy 29**, vehicle on road 2' from DER, 304' right of centerline, 14' AGL/824' MSL. Trees and pole beginning 402' from DER, 457' right of centerline, up to 43' AGL/860' MSL. Trees beginning 1283' from DER, 639' left of centerline, up to 44' AGL/852' MSL.

## SPRINGFIELD, TN

### SPRINGFIELD ROBERTSON COUNTY

#### (M91)

#### TAKEOFF MINIMUMS AND (OBSTACLE) DEPARTURE PROCEDURES

AMDT 1 12040 (FAA)

TAKEOFF OBSTACLE NOTES: **Rwy 4**, ground 129' from DER, 495' right of centerline, 715' MSL. Trees beginning 495' from DER, 209' right of centerline, up to 100' AGL/800' MSL. Trees beginning 863' from DER, 442' left of centerline, up to 100' AGL/784' MSL. Transmission poles beginning 1410' from DER, 229' left of centerline, up to 38' AGL/748' MSL.

**Rwy 22**, power lines beginning 530' from DER, 625' left of centerline, up to 100' AGL/819' MSL. Trees beginning 630' from DER, 520' left of centerline, up to 100' AGL/819' MSL.

# TAKEOFF MINIMUMS, (OBSTACLE) DEPARTURE PROCEDURES, AND DIVERSE VECTOR AREA (RADAR VECTORS)

18088

SE-1

# TAKEOFF MINIMUMS, (OBSTACLE) DEPARTURE PROCEDURES, AND DIVERSE VECTOR AREA (RADAR VECTORS)

18088

## STURGIS, KY

STURGIS MUNI (TWT)  
TAKEOFF MINIMUMS AND (OBSTACLE)  
DEPARTURE PROCEDURES  
AMDT 4 14093 (FAA)

TAKEOFF MINIMUMS: **Rwy 1**, 400-2¼ or std. w/ min. climb of 280' per NM to 800.

TAKEOFF OBSTACLE NOTES: **Rwy 1**, trees beginning 2114' from DER, 514' left of centerline, up to 100' AGL/689' MSL. **Rwy 19**, trees beginning 1248' from DER, 19' left of centerline, up to 94' AGL/454' MSL. Trees beginning 2144' from DER, 226' right of centerline, up to 100' AGL/509' MSL.

## TAZEWELL, TN

NEW TAZEWELL MUNI (3A2)  
TAKEOFF MINIMUMS AND (OBSTACLE)  
DEPARTURE PROCEDURES  
ORIG 14149 (FAA)

TAKEOFF MINIMUMS: **Rwy 7**, NA-Environmental and obstacles. **Rwy 25**, 300-1 w/min. climb of 480' per NM to 2700, or 1800-2½ for climb in visual conditions.

DEPARTURE PROCEDURE: **Rwy 25**, climb heading 250° to 2500 before proceeding on course.

VCOA: **Rwy 25**, obtain ATC approval for climb in visual conditions when requesting IFR clearance. Climb in visual conditions to cross New Tazewell Muni airport at or above 2800 before proceeding on course.

TAKEOFF OBSTACLE NOTES: **Rwy 25**, multiple trees and bushes beginning 12' from DER, 190' right and left of centerline, up to 100' AGL/1213' MSL. Fence 77' from DER, 246' right of centerline, 4' AGL/1185' MSL. Poles 302' from DER, 254' right of centerline, 29' AGL/1253' MSL. Building 691' from DER, 482' right of centerline, 16' AGL/1211' MSL. Multiple trees beginning 5703' from DER, 406' right of centerline, up to 100' AGL/1328' MSL.

## TOMPKINSVILLE, KY

TOMPKINSVILLE-MONROE COUNTY  
(TZV)  
TAKEOFF MINIMUMS AND (OBSTACLE)  
DEPARTURE PROCEDURES  
ORIG 09351 (FAA)

DEPARTURE PROCEDURE: **Rwy 22**, climb heading 218° to 2000 before proceeding on course.

TAKEOFF OBSTACLE NOTES: **Rwy 4**, trees beginning at DER, left and right of centerline, up to 100' AGL/1100' MSL. **Rwy 22**, pole 10' from DER, 114' right of centerline, 2' AGL/1016' MSL. Trees beginning at DER, left and right of centerline, up to 100' AGL/1132' MSL.

## TRENTON, TN

GIBSON COUNTY (TGC)  
TAKEOFF MINIMUMS AND (OBSTACLE)  
DEPARTURE PROCEDURES  
AMDT 1 87127 (FAA)

TAKEOFF MINIMUMS: **Rwy 1**, 400-1.

DEPARTURE PROCEDURE: **Rwys 1, 19**, climb runway heading to 1500 before turning east.

## TULLAHOMA, TN

TULLAHOMA RGNL/WM NORTHERN FIELD  
(THA)

TAKEOFF MINIMUMS AND (OBSTACLE)  
DEPARTURE PROCEDURES  
AMDT 1 11237 (FAA)

TAKEOFF MINIMUMS: **Rwys 9, 27**, NA - Environmental.

TAKEOFF OBSTACLE NOTES: **Rwy 6**, buildings beginning 36' from DER, 439' right of centerline, up to 28' AGL/1098' MSL. Rising terrain, beginning 41' from DER, 5' right of centerline, up to 1090' MSL. Fence 83' from DER, 393' right of centerline, up to 12' AGL/1082' MSL. Trees beginning 130' from DER, left and right of centerline, up to 100' AGL/1199' MSL. Light poles beginning 674' from DER, 311' left of centerline, up to 36' AGL/1096' MSL. **Rwy 18**, trees beginning 146' from DER, left and right of centerline, up to 100' AGL/1199' MSL. Buildings beginning 299' from DER, 217' right of centerline, up to 32' AGL/1102' MSL. **Rwy 24**, trees beginning 454' from DER, left and right of centerline, up to 100' AGL/1219' MSL. **Rwy 36**, trees beginning 24' from DER, left and right of centerline, up to 100' AGL/1229' MSL. Light pole 260' from DER, 498' left of centerline, 18' AGL/1088' MSL.

## UNION CITY, TN

EVERETT-STEWART RGNL (UCY)  
TAKEOFF MINIMUMS AND (OBSTACLE)  
DEPARTURE PROCEDURES  
AMDT 1 11237 (FAA)

TAKEOFF OBSTACLE NOTES: **Rwy 1**, obstruction light 9' from DER, 124' right of centerline, 2' AGL/310' MSL. Trees 1200' from DER, 734' left of centerline, up to 69' AGL/379' MSL. Tractor 112' from DER, 405' left of centerline, 12' AGL/321' MSL. **Rwy 19**, trees 1050' from DER, 61' left of centerline, up to 100' AGL/449' MSL. Trees 1452' from DER, 865' right of centerline, up to 100' AGL/459' MSL. Tractor 32' from DER, 81' left of centerline, 12' AGL/351' MSL.

## WAVERLY, TN

HUMPHREYS COUNTY (0M5)  
TAKEOFF MINIMUMS AND (OBSTACLE)  
DEPARTURE PROCEDURES  
ORIG 79221 (FAA)

TAKEOFF MINIMUMS: **Rwys 3, 21**, 200-1.

24 MAY 2018 to 21 JUN 2018

24 MAY 2018 to 21 JUN 2018

# TAKEOFF MINIMUMS, (OBSTACLE) DEPARTURE PROCEDURES, AND DIVERSE VECTOR AREA (RADAR VECTORS)

18088

SE-1




**TAKEOFF MINIMUMS, (OBSTACLE) DEPARTURE PROCEDURES, AND**

  
**DIVERSE VECTOR AREA (RADAR VECTORS)**

18088

**WILLIAMSBURG, KY**

WILLIAMSBURG-WHITLEY COUNTY

(BYL)

TAKEOFF MINIMUMS AND (OBSTACLE)  
DEPARTURE PROCEDURES

AMDT 1 12264 (FAA)

TAKEOFF MINIMUMS: **Rwy 2**, 300-1¼ or std. w/ a min. climb of 221' per NM to 1500. **Rwy 20**, std. w/ min. climb of 337' per NM to 2800, or 1400-3 for climb in visual conditions.

DEPARTURE PROCEDURE: **Rwy 2**, climb heading 023° to 2000 before turning East. **Rwy 20**, for climb in visual conditions cross Williamsburg-Whitley County Airport at or above 2400 MSL before proceeding on course. When executing VCOA, notify ATC prior to departure.

TAKEOFF OBSTACLE NOTES: **Rwy 2**, trees beginning 3563' from DER, left of centerline, up to 100' AGL/1353' MSL. Trees beginning 4285' from DER, right of centerline, up to 100' AGL/1355' MSL. Tree 1.1 NM from DER, 52' right of centerline, up to 76' AGL/1355' MSL. Tree 1.1 NM from DER, 195' left of centerline, up to 89' AGL/1348' MSL. **Rwy 20**, trees beginning 331' from DER, 331' left of centerline, up to 57' AGL/1217' MSL.

**WINCHESTER, TN**

WINCHESTER MUNI (BGF)

TAKEOFF MINIMUMS AND (OBSTACLE)  
DEPARTURE PROCEDURES

AMDT 2 14317 (FAA)

TAKEOFF MINIMUMS: **Rwy 18**, std. w/min. climb of 330' per NM to 2400, or 1500-3 for climb in visual conditions.

DEPARTURE PROCEDURE: **Rwy 18**, climb heading 185° to 2300 before turning left. **Rwy 36**, climb heading 005° to 2000 before turning right.

VCOA: **Rwy 18**, obtain ATC approval for climb in visual conditions when requesting IFR clearance. Climb in visual conditions to cross Winchester Muni airport at or above 2300 before proceeding on course.

TAKEOFF OBSTACLE NOTES: **Rwy 18**, trees beginning 174' from DER, 387' left of centerline, up to 81' AGL/1062' MSL. Vehicles on roadway beginning 388' from DER, left and right of centerline, up to 17' AGL/1006' MSL. Tower 726' from DER, 337' left of centerline, 31' AGL/1018' MSL. Trees beginning 1237' from DER, 539' right of centerline, up to 126' AGL/1057' MSL. Rising terrain beginning 3.4 NM from DER, left and right of centerline, up to 2119' MSL. **Rwy 36**, rising terrain and trees beginning 97' from DER, 293' left of centerline, up to 109' AGL/1100' MSL. Vehicles on roadway beginning 817' from DER, 659' left of centerline, up to 17' AGL/996' MSL. Trees beginning 2654' from DER, 75' right of centerline, up to 60' AGL/1052' MSL.

24 MAY 2018 to 21 JUN 2018

24 MAY 2018 to 21 JUN 2018


**TAKEOFF MINIMUMS, (OBSTACLE) DEPARTURE PROCEDURES, AND**

  
**DIVERSE VECTOR AREA (RADAR VECTORS)**

18088

SE-1