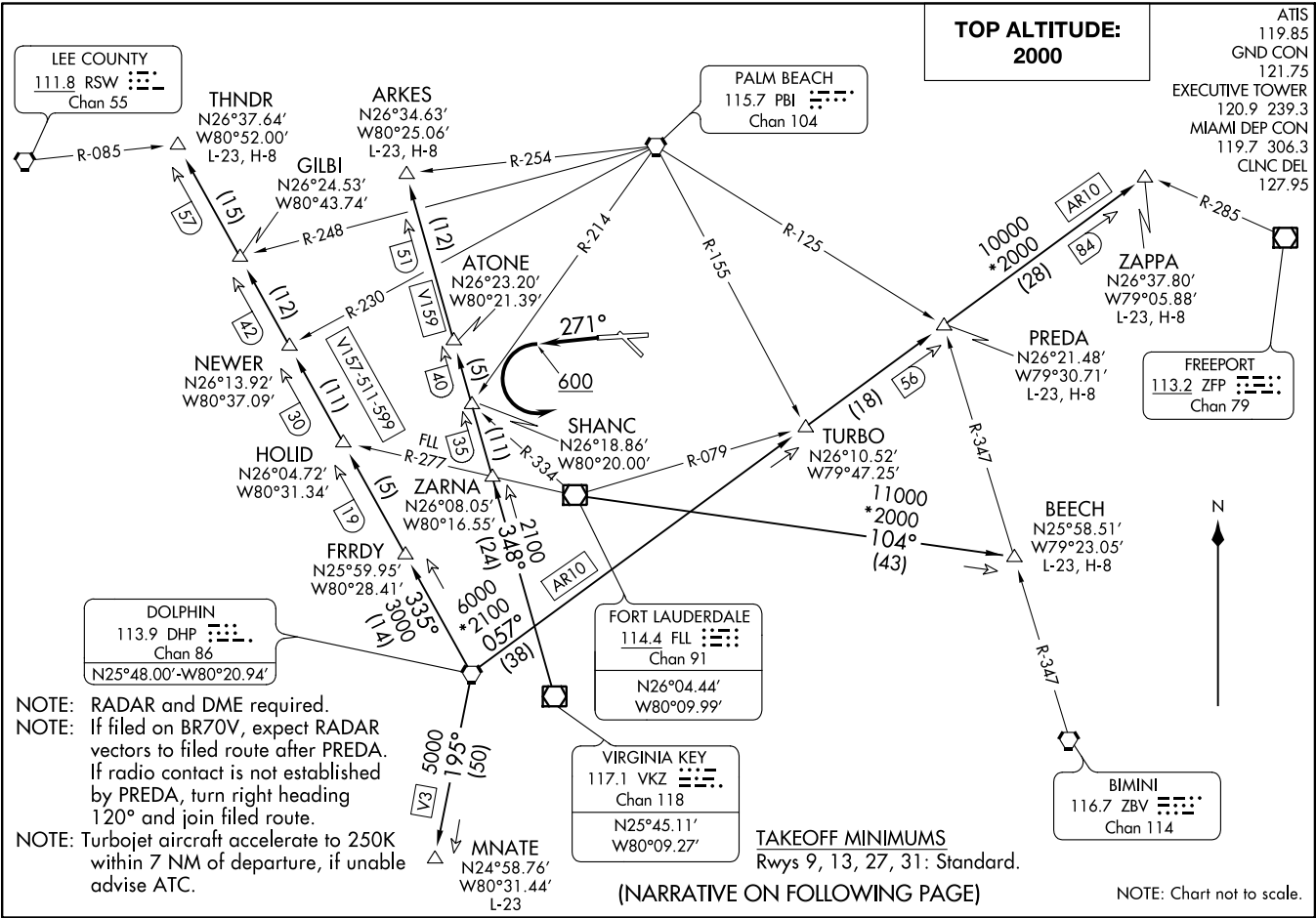


FORT LAUDERDALE SEVEN DEPARTURE  
(FL17.FIL) 30JAN20

FORT LAUDERDALE, FLORIDA  
FORT LAUDERDALE EXECUTIVE (FXXE)



NOTE: RADAR and DME required.  
 NOTE: If filed on BR70V, expect RADAR vectors to filed route after PREDa. If radio contact is not established by PREDa, turn right heading 120° and join filed route.  
 NOTE: Turbojet aircraft accelerate to 250K within 7 NM of departure, if unable advise ATC.

(NARRATIVE ON FOLLOWING PAGE)

(FL17.FIL) 20030  
 AL-5942 (FAA)  
 FORT LAUDERDALE EXECUTIVE (FXXE)  
 FORT LAUDERDALE, FLORIDA

ATIS 119.85  
 GND CON 121.75  
 EXECUTIVE TOWER 120.9 239.3  
 MIAMI DEP CON 119.7 306.3  
 CLNC DEL 127.95

**FREEPORT**  
 113.2 ZFP  
 Chan 79

**BIMINI**  
 116.7 ZBV  
 Chan 114

**FORT LAUDERDALE**  
 114.4 FL  
 Chan 91  
 N26°04.44'  
 W80°09.99'

**VIRGINIA KEY**  
 117.1 VKZ  
 Chan 118  
 N25°45.11'  
 W80°09.27'

**PALM BEACH**  
 115.7 PBI  
 Chan 104

**DOLPHIN**  
 113.9 DHP  
 Chan 86  
 N25°48.00'-W80°20.94'

**LEE COUNTY**  
 111.8 RSW  
 Chan 55

# FORT LAUDERDALE SEVEN DEPARTURE



## DEPARTURE ROUTE DESCRIPTION

TAKEOFF RWYS 9, 13, 31: Climb on assigned heading, thence. . . .

TAKEOFF RWY 27: Climb on heading 271° to 600 before turning left. Climb on assigned heading, thence. . . .

. . . .maintain 2000 or assigned higher altitude and expect RADAR vectors to appropriate transition. Expect further clearance to filed altitude ten (10) minutes after departure.

ARKES TRANSITION (FLL7.ARKES): From over VKZ VOR/DME on VKZ R-348 to ARKES INT.

BEECH TRANSITION (FLL7.BEECH): From over FLL VOR/DME on FLL R-104 to BEECH INT.

MNATE TRANSITION (FLL7.MNATE): From over DHP VORTAC on DHP R-195 to MNATE.

PREDA TRANSITION (FLL7.PREDA): From over DHP VORTAC on DHP R-057 to PREDA INT.

THNDR TRANSITION (FLL7.THNDR): From over DHP VORTAC on DHP R-335 to THNDR INT.

ZAPPA TRANSITION (FLL7.ZAPPA): From over DHP VORTAC on DHP R-057 to ZAPPA INT.

SE-3, 16 JUL 2020 to 13 AUG 2020

SE-3, 16 JUL 2020 to 13 AUG 2020