

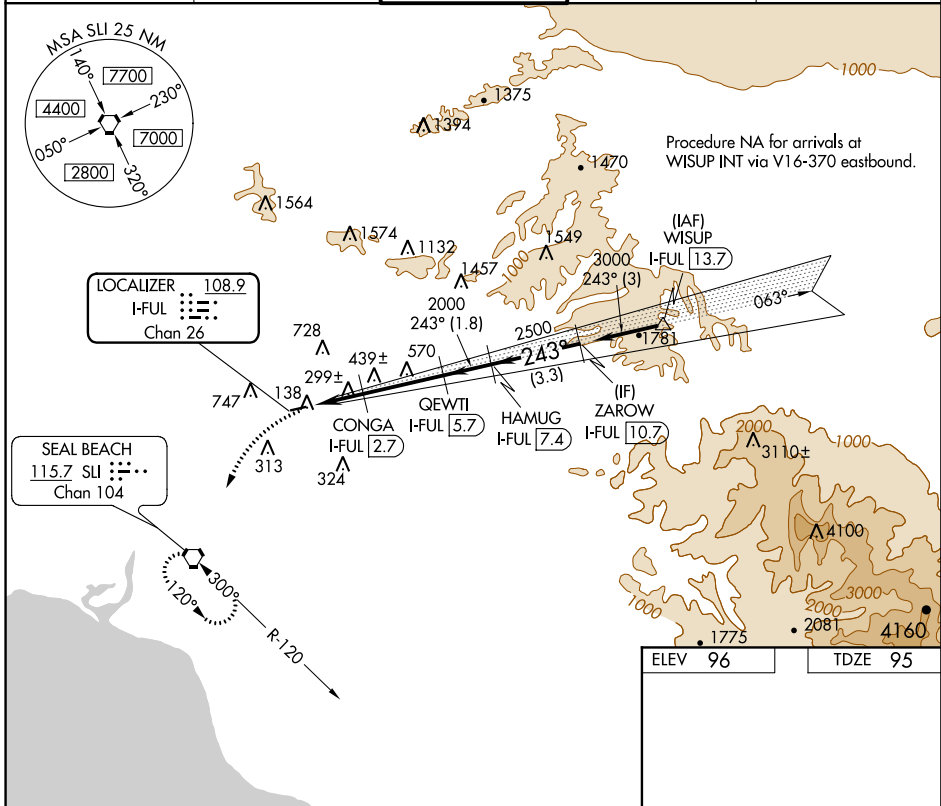
LOC/DME I-FUL <b>108.9</b> Chan 26	APP CRS <b>243°</b>	Rwy Idg <b>2868</b> TDZE <b>95</b> Apt Elev <b>96</b>
--	------------------------	---

# LOC/DME RWY 24

FULLERTON MUNI (F'UL)

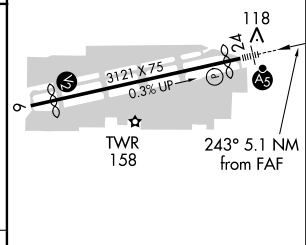
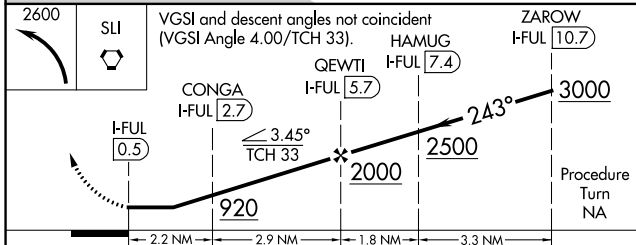
<p><b>▽</b> Inoperative table does not apply. <b>▲</b> Night landing: Rwy 6 NA. Helicopter visibility reduction below 1 SM NA.</p>	<p>MALSR</p>	<p>MISSED APPROACH: Climbing left turn to 2600 direct SU VORTAC and hold.</p>
--	--------------	---

<p>ATIS <b>125.05</b></p>	<p>SOCAL APP CON <b>125.35 316.125</b></p>	<p>FULLERTON TOWER★ <b>119.1 (CTAF)</b> </p>	<p>GND CON <b>121.8</b></p>	<p>UNICOM <b>122.95</b></p>
-------------------------------	--	--	---------------------------------	---------------------------------



SW-3, 29 MAR 2018 to 26 APR 2018

SW-3, 29 MAR 2018 to 26 APR 2018



CATEGORY	A	B	C	D
S-24	560-1	465 (500-1)		NA
CIRCLING	760-1 664 (700-1)	840-1¼ 744 (800-1¼)		NA

ELEV 96	TDZE 95
MIRL Rwy 6-24	REIL Rws 6 and 24

# RNAV (GPS) RWY 24

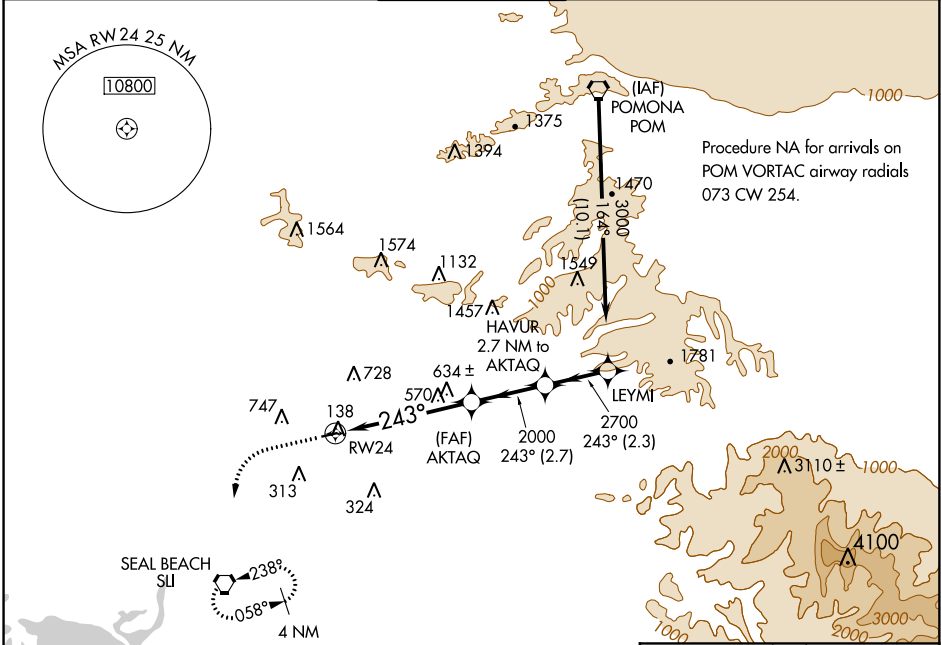
FULLERTON MUNI (F'UL)

APP CRS <b>243°</b>	Rwy Idg 2868
	TDZE 95
	Apt Elev 96

<p><b>▼</b> Inoperative table does not apply.</p> <p><b>▲ NA</b> DME/DME RNP-0.3 NA. Night landing: Rwy 6 NA Helicopter visibility reduction below 1 SM NA.</p>	<p><b>MALSR</b></p>
---	---------------------

**MISSED APPROACH:** Climb to 1300, then climbing left turn to 2600 direct SLI VORTAC and hold.

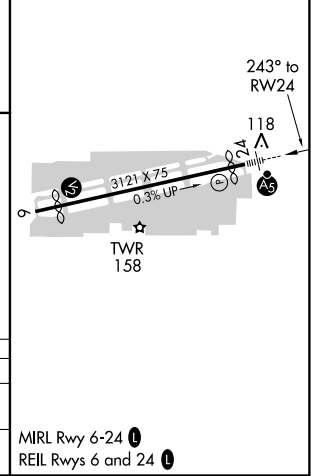
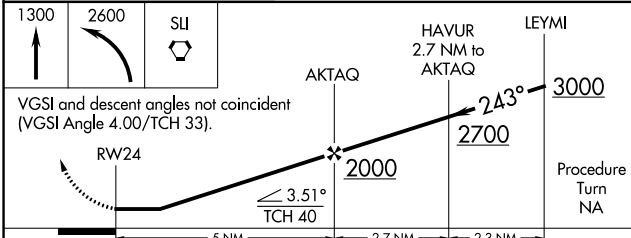
ATIS <b>125.05</b>	SOCAL APP CON <b>125.35 316.125</b>	<b>FULLERTON TOWER*</b> <b>119.1 (CTAF)</b>	GND CON <b>121.8</b>	UNICOM <b>122.95</b>
-----------------------	--	--	-------------------------	-------------------------



SW-3, 29 MAR 2018 to 26 APR 2018

SW-3, 29 MAR 2018 to 26 APR 2018

ELEV 96	TDZE 95
---------	---------



CATEGORY	A	B	C	D
LNAV MDA	900-1 805 (900-1)	900-1¼ 805 (900-1¼)		NA
CIRCLING	900-1 804 (900-1)	900-1¼ 804 (900-1¼)		NA

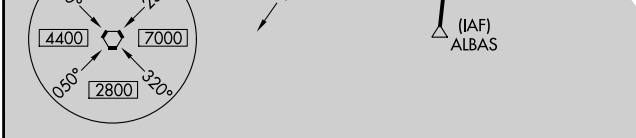
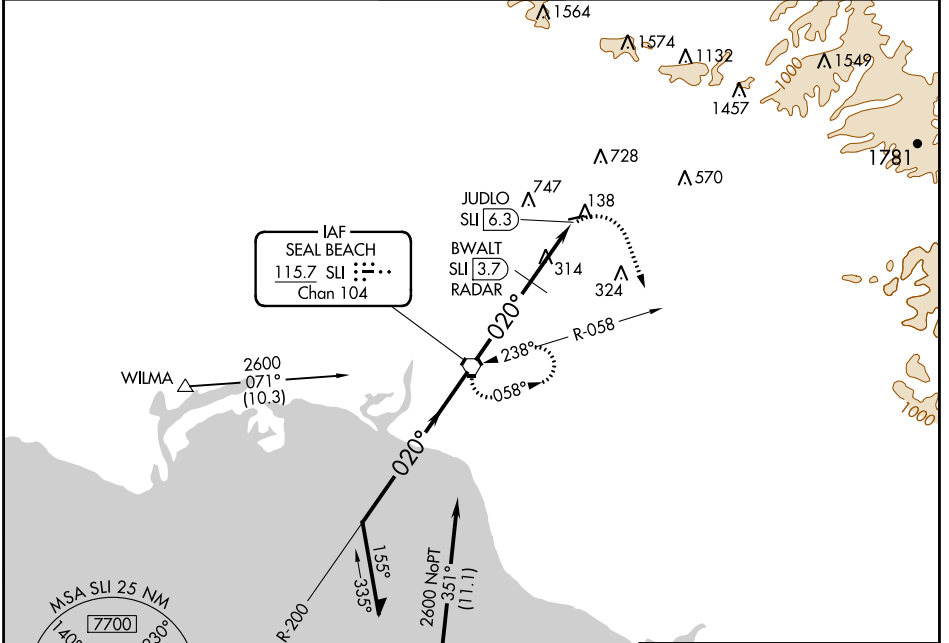
VORTAC SLI <b>115.7</b> Chan <b>104</b>	APP CRS <b>020°</b>	Rwy Idg TDZE Apt Elev	<b>N/A</b> <b>N/A</b> <b>96</b>
---	------------------------	-----------------------------	---------------------------------------

**VOR-A**  
FULLERTON MUNI (FUL)

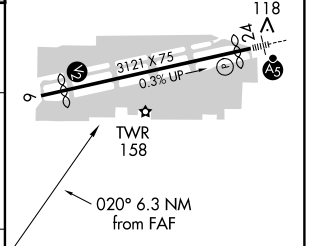
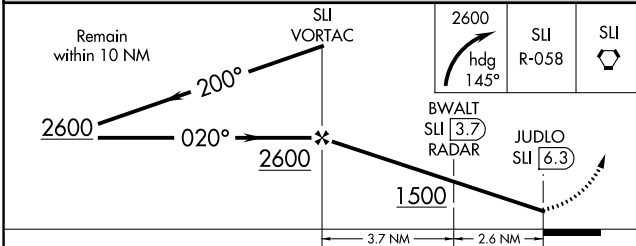
**▽** Maximum entry altitude 6000.  
**▲** Night landing: Rwy 6 NA.  
Helicopter visibility reduction below 1 SM NA.

MISSED APPROACH: Climbing right turn to 2600 via heading 145° and SLI R-058 to SLI VORTAC and hold.

ATIS <b>125.05</b>	SOCAL APP CON <b>125.35 316.125</b>	<b>FULLERTON TOWER*</b> <b>119.1 (CTAF)</b> <b>0</b>	GND CON <b>121.8</b>	UNICOM <b>122.95</b>
-----------------------	--	---	-------------------------	-------------------------



ELEV <b>96</b>
----------------



CATEGORY	A	B	C	D
CIRCLING	1500-1¼ 1404 (1500-1¼)	1500-1½ 1404 (1500-1½)	NA	NA
BWALT FIX MINIMUMS				
CIRCLING	760-1 664 (700-1)	840-1¼ 744 (800-1¼)	NA	NA

FAF to MAP 6.3 NM					
Knots	60	90	120	150	180
Min:Sec	6:18	4:12	3:09	2:31	2:06

SW-3, 29 MAR 2018 to 26 APR 2018

SW-3, 29 MAR 2018 to 26 APR 2018