

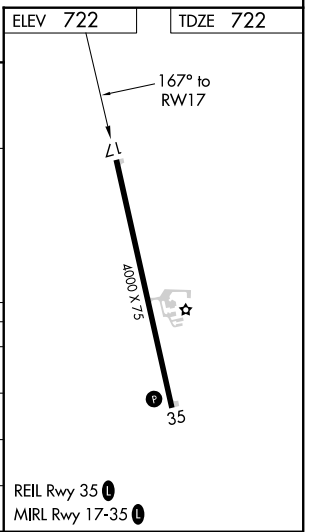
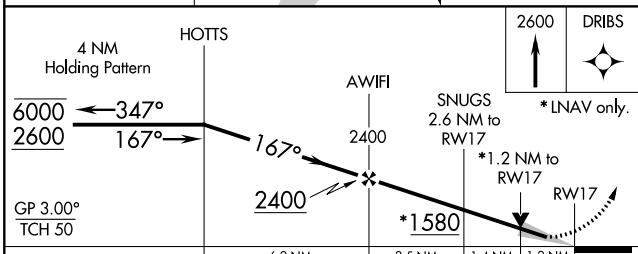
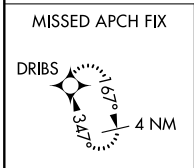
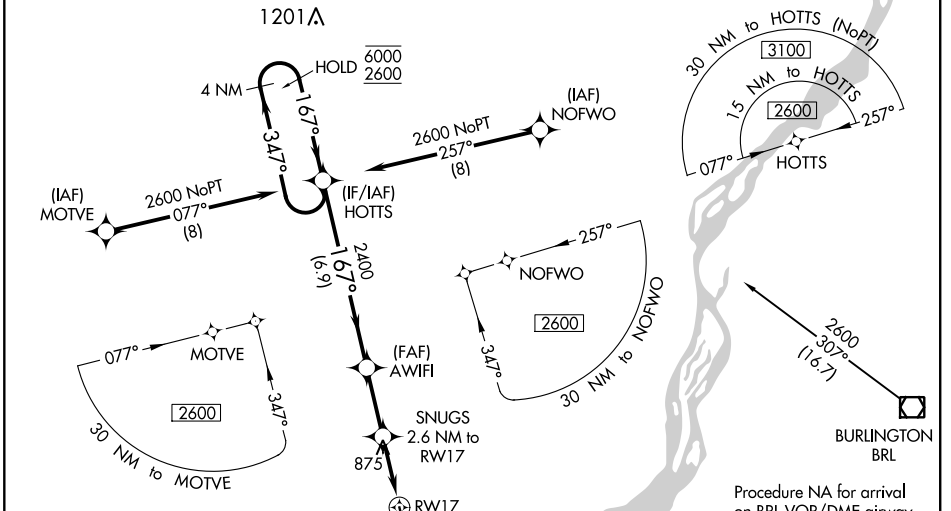
WAAS CH 82641 W17A	APP CRS 167°	Rwy Idg TDZE Apt Elev	4000 722 722
--	------------------------	-----------------------------	---

RNAV (GPS) RWY 17

FORT MADISON MUNI (F'SW)

RNP APCH.	MISSED APPROACH: Climb to 2600 direct DRIBS and hold.
<p>▼ For uncompensated Baro-VNAV systems, LNAV/VNAV NA below -16°C or above 54°C.</p>	

AWOS-3 120.925	CHICAGO CENTER 135.6 316.1	UNICOM 122.8 (CTAF) 0
--------------------------	--------------------------------------	---------------------------------



CATEGORY	A	B	C	D
LPV DA		972-1	250 (300-1)	
LNAV/VNAV DA		972-1	250 (300-1)	
LNAV MDA	1140-1	418 (500-1)	1140-1½	418 (500-1½)
C CIRCLING	1200-1	478 (500-1)	1220-1½	1500-2½
			498 (500-1½)	778 (800-2½)

NC-3, 03 DEC 2020 to 31 DEC 2020

NC-3, 03 DEC 2020 to 31 DEC 2020

REIL Rwy 35 0
MIRL Rwy 17-35 0

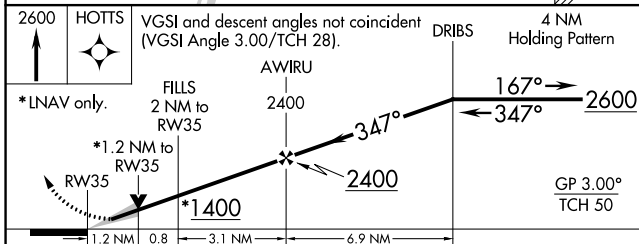
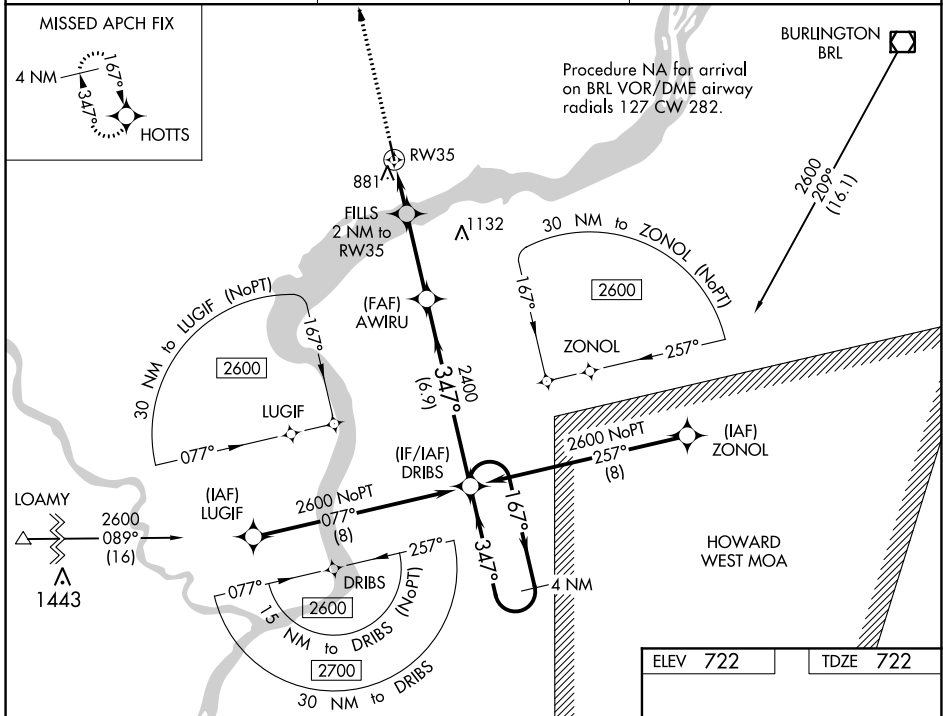
WAAS CH 70741 W35A	APP CRS 347°	Rwy Idg TDZE 722 Apt Elev 722	4000
--	------------------------	---	-------------

RNAV (GPS) RWY 35

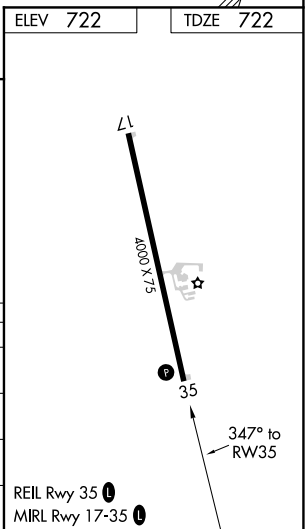
FORT MADISON MUNI (F'SW)

RNP APCH.	MISSED APPROACH: Climb to 2600 direct HOTTs and hold.
<p>▼ For uncompensated Baro-VNAV systems, LNAV/VNAV NA below -16°C (4°F) ▲ or above 54°C (130°F).</p>	

AWOS-3 120.925	CHICAGO CENTER 135.6 316.1	UNICOM 122.8 (CTAF) 0
--------------------------	--------------------------------------	---------------------------------



CATEGORY	A	B	C	D
LPV DA	972-1		250 (300-1)	
LNAV/VNAV DA	1158-1¼		436 (500-1¼)	
LNAV MDA	1140-1 418 (500-1)		1140-1½ 418 (500-1½)	
C CIRCLING	1200-1 478 (500-1)		1220-1½ 498 (500-1½) 1500-2½ 778 (800-2½)	



NC-3, 03 DEC 2020 to 31 DEC 2020

NC-3, 03 DEC 2020 to 31 DEC 2020

VOR/DME BRL 111.4 Chan 51	APP CRS 253°	Rwy Idg TDZE Apt Elev	N/A N/A 722
---	------------------------	-----------------------------	--

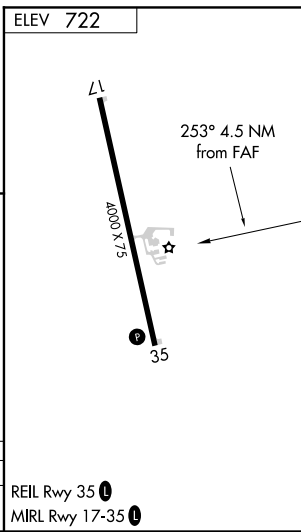
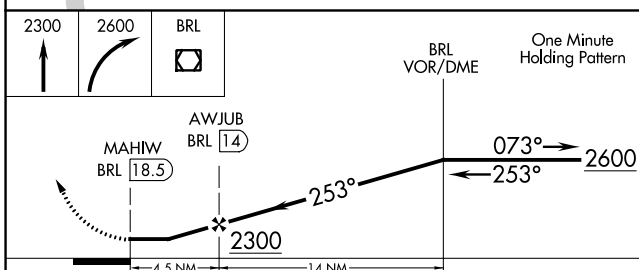
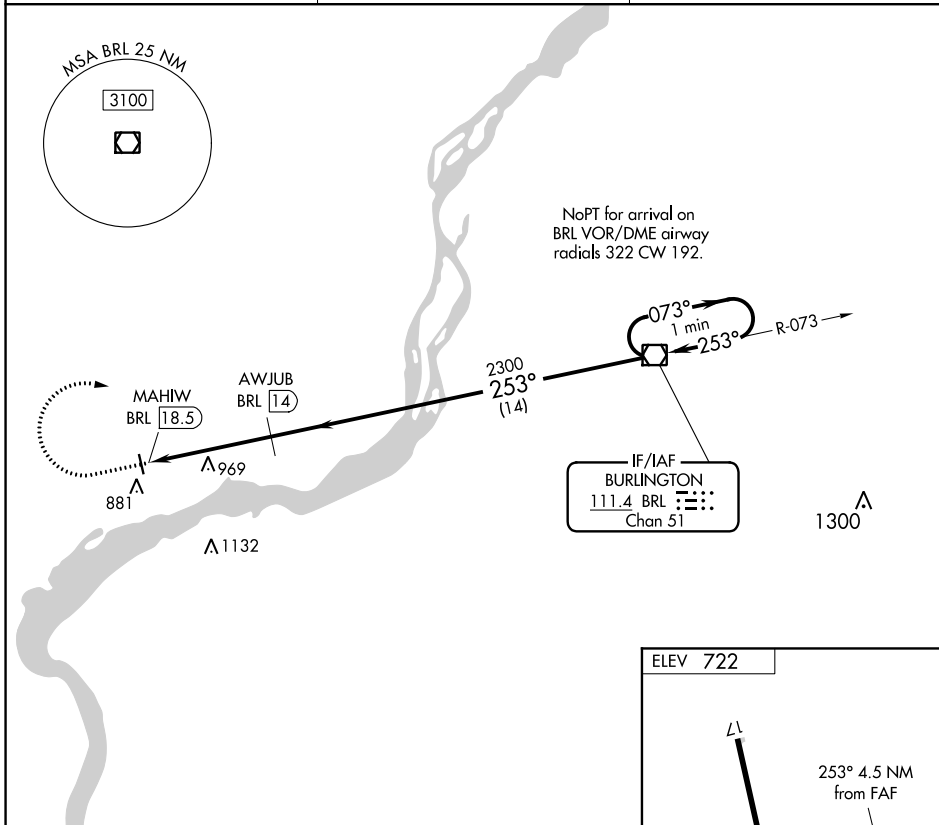
VOR/DME-A

FORT MADISON MUNI (F5W)

⚠ When local altimeter not received, use Burlington altimeter setting; increase all MDA 40 feet and Circling Cat D visibility ¼ SM. Visibility reduction by helicopters NA.

MISSED APPROACH: Climb to 2300 then climbing right turn to 2600 direct BRL VOR/DME and hold.

AWOS-3 120.925	CHICAGO CENTER 135.6 316.1	UNICOM 122.8 (CTAF) Ⓛ
--------------------------	--------------------------------------	--



CATEGORY	A	B	C	D
ⓐ CIRCLING	1220-1	498 (500-1)	1220-1½ 498 (500-1½)	1500-2½ 778 (800-2½)

REIL Rwy 35 **Ⓛ**
MRL Rwy 17-35 **Ⓛ**

NC-3, 03 DEC 2020 to 31 DEC 2020

NC-3, 03 DEC 2020 to 31 DEC 2020

INSTRUMENT APPROACH PROCEDURE CHARTS

A IFR ALTERNATE AIRPORT MINIMUMS

Standard alternate minimums for non-precision approaches and approaches with vertical guidance [NDB, VOR, LOC, TACAN, LDA, SDF, VOR/DME, ASR, RNAV (GPS) or RNAV (RNP)] are 800-2. Standard alternate minimums for precision approaches (ILS, PAR, or GLS) are 600-2. Airports within this geographical area that require alternate minimums other than standard or alternate minimums with restrictions are listed below. NA - means alternate minimums are not authorized due to unmonitored facility, absence of weather reporting service, or lack of adequate navigation coverage. Civil pilots see FAR 91. IFR Alternate Minimums: Ceiling and Visibility Minimums not applicable to USA/USN/USAF. Pilots must review the IFR Alternate Minimums Notes for alternate airfield suitability.

NAME ALTERNATE MINIMUMS
ALGONA, IA
 ALGONA MUNI (AXA).....**RNAV (GPS) Rwy 12**
VOR/DME -A
 NA when local weather not available.

AMES, IA
 AMES MUNI (AMW).....**ILS or LOC Rwy 1²³**
RNAV (GPS) Rwy 19¹
¹NA when local weather not available.
²NA when control tower closed.
³LOC, Category D, 1100-3.

ANKENY, IA
 ANKENY RGNL (IKV).....**RNAV (GPS) Rwy 18**
RNAV (GPS) Rwy 22
RNAV (GPS) Rwy 36
 Category D, 900-2³/₄.

ATLANTIC, IA
 ATLANTIC MUNI (AIO).....**RNAV (GPS) Rwy 2**
RNAV (GPS) Rwy 20
 NA when local weather not available.

AUDUBON, IA
 AUDUBON COUNTY (ADU).....**RNAV (GPS) Rwy 32**
 NA when local weather not available.

BOONE, IA
 BOONE MUNI (BNW).....**RNAV (GPS) Rwy 15**
RNAV (GPS) Rwy 33
 NA when local weather not available.

BRANSON, MO
 BRANSON (BBG).....**RNAV (GPS) Rwy 14¹**
RNAV (GPS) Rwy 32²
 NA when local weather not available.
¹Category C, 800-2¹/₄; Category D, 800-2¹/₂.
²Category D, 800-2¹/₄.

NAME ALTERNATE MINIMUMS
BURLINGTON, IA
 SOUTHEAST IOWA
 RGNL (BRL).....**RNAV (GPS) Rwy 12**
RNAV (GPS) Rwy 30
RNAV (GPS) Rwy 36
VOR Rwy 12
VOR Rwy 30
 NA when local weather not available.

CAMDENTON, MO
 CAMDENTON MEMORIAL-LAKE
 RGNL (OZS).....**RNAV (GPS) Rwy 15**
RNAV (GPS) Rwy 33
 NA when local weather not available.

CAPE GIRARDEAU, MO
 CAPE GIRARDEAU
 RGNL (CGI).....**ILS or LOC Rwy 10¹²**
LOC BC Rwy 28¹³
RNAV (GPS) Rwy 2³
RNAV (GPS) Rwy 10³
RNAV (GPS) Rwy 20³
RNAV (GPS) Rwy 28³
 NA when local weather not available.
¹NA when control tower closed.
²LOC, Category D, 800-2¹/₄.
³Category D, 800-2¹/₄.

CARROLL, IA
 ARTHUR
 N NEU (CIN).....**RNAV (GPS) Rwy 13**
RNAV (GPS) Rwy 31
 NA when local weather not available.

CEDAR RAPIDS, IA
 THE EASTERN
 IOWA (CID).....**ILS or LOC Rwy 9¹**
ILS or LOC Rwy 27²
RNAV (GPS) Rwy 9
RNAV (GPS) Rwy 27
 NA when local weather not available.
¹NA when control tower closed.
²ILS, NA when control tower closed.

03 DEC 2020 to 31 DEC 2020

03 DEC 2020 to 31 DEC 2020

NAME ALTERNATE MINIMUMS

CENTERVILLE, IA

CENTERVILLE
MUNI (TVK).....**RNAV (GPS) Rwy 16**
RNAV (GPS) Rwy 34
NA when local weather not available.

CHARITON, IA

CHARITON
MUNI (CNC).....**RNAV (GPS) Rwy 10**
RNAV (GPS) Rwy 17
NA when local weather not available.

CHARLES CITY, IA

NORTHEAST
IOWA RGNL (CCY).....**LOC Rwy 12**
RNAV (GPS) Rwy 12
RNAV (GPS) Rwy 30
NA when local weather not available.

CHEROKEE, IA

CHEROKEE COUNTY
RGNL (CKP).....**RNAV (GPS) Rwy 18**
Category C, 900-2½; Category D, 1000-3.

CLARINDA, IA

SCHENCK FIELD (ICL).....**RNAV (GPS) Rwy 2**
RNAV (GPS) Rwy 20
Category C, 800-2¼; Category D, 800-2½.

CLARION, IA

CLARION
MUNI (CAV).....**RNAV (GPS) Rwy 14**
RNAV (GPS) Rwy 32
NA when local weather not available.

CLINTON, IA

CLINTON MUNI (CWI).....**ILS or LOC Rwy 3**
RNAV (GPS) Rwy 3
RNAV (GPS) Rwy 14
RNAV (GPS) Rwy 21
RNAV (GPS) Rwy 32
NA when local weather not available.

CLINTON, MO

CLINTON
RGNL (GLY).....**RNAV (GPS) Rwy 4**
RNAV (GPS) Rwy 18
RNAV (GPS) Rwy 22
RNAV (GPS) Rwy 36
NA when local weather not available.

COLUMBIA, MO

COLUMBIA
RGNL (COU).....**ILS or LOC Rwy 2¹**
LOC BC Rwy 20¹
VOR Rwy 13²

¹NA when control tower closed.²Categories A, B, 1000-2; Categories C, D, 1000-3.

NAME ALTERNATE MINIMUMS

COUNCIL BLUFFS, IA

COUNCIL BLUFFS
MUNI (CBF).....**RNAV (GPS) Rwy 18**
RNAV (GPS) Rwy 36
VOR-A
NA when local weather not available.

CRESTON, IA

CRESTON MUNI (CSQ).....**RNAV (GPS) Rwy 16**
RNAV (GPS) Rwy 34
NA when local weather not available.

DAVENPORT, IA

DAVENPORT
MUNI (DVN).....**ILS or LOC Rwy 15**
RNAV (GPS) Rwy 3
RNAV (GPS) Rwy 15
RNAV (GPS) Rwy 21
RNAV (GPS) Rwy 33
VOR Rwy 3
VOR Rwy 21
NA when local weather not available.

DECORAH, IA

DECORAH MUNI (DEH).....**RNAV (GPS) Rwy 11**
RNAV (GPS) Rwy 29
NA when local weather not available.

DENISON, IA

DENISON MUNI (DNS).....**RNAV (GPS) Rwy 12**
RNAV (GPS) Rwy 30
NA when local weather not available.

DES MOINES, IA

DES MOINES
INTL (DSM).....**ILS or LOC Rwy 5¹**
ILS or LOC Rwy 13¹
ILS or LOC Rwy 31²
RNAV (GPS) Rwy 5¹
RNAV (GPS) Rwy 13¹
RNAV (GPS) Rwy 23¹
RNAV (GPS) Rwy 31¹
VOR Rwy 23³

¹Category D, 900-2½.²LOC, Category D, 900-2½; Category E, 900-2¾.³Category C, 800-2½; Category D, 900-2½.

NAME ALTERNATE MINIMUMS

DUBUQUE, IA

DUBUQUE
RGNL (DBQ).....**ILS or LOC Rwy 36¹²**
LOC Rwy 31¹³
RNAV (GPS) Rwy 13
RNAV (GPS) Rwy 18
RNAV (GPS) Rwy 31
RNAV (GPS) Rwy 36
VOR Rwy 13³
VOR Rwy 31⁴
VOR Rwy 36³

NA when local weather not available.

¹NA when control tower closed.

²LOC, Category D, 800-2¹/₄.

³Category D, 800-2¹/₄.

⁴Category, 800-2¹/₄; Category D, 800-2¹/₄.

ESTHERVILLE, IA

ESTHERVILLE
MUNI (EST).....**RNAV (GPS) Rwy 16**
RNAV (GPS) Rwy 34

NA when local weather not available.

FAIRFIELD, IA

FAIRFIELD MUNI (FFL).....**RNAV (GPS) Rwy 18**
RNAV (GPS) Rwy 36

NA when local weather not available.

FARMINGTON, MO

FARMINGTON
RGNL (FAM).....**RNAV (GPS) Rwy 2**
RNAV (GPS) Rwy 20

NA when local weather not available.

FOREST CITY, IA

FOREST CITY
MUNI (FXY).....**RNAV (GPS) Rwy 15**
RNAV (GPS) Rwy 33
VOR-A

NA when local weather not available.

FORT DODGE, IA

FORT DODGE
RGNL (FOD).....**RNAV (GPS) Rwy 6**
RNAV (GPS) Rwy 12
RNAV (GPS) Rwy 24
RNAV (GPS) Rwy 30
VOR Rwy 12
VOR/DME Rwy 30

NA when local weather not available.

NAME ALTERNATE MINIMUMS

FORT LEONARD WOOD, MO

WAYNESVILLE-ST ROBERT RGNL FORNEY
FIELD (TBN).....**ILS or LOC Rwy 15¹²**
RNAV (GPS) Rwy 15³
RNAV (GPS) Rwy 33³
VOR Rwy 15³⁴
VOR Rwy 33³⁴

¹ILS, NA when local weather not available.

²ILS, NA when control tower closed.

³NA when local weather not available.

⁴NA when control tower closed.

FORT MADISON, IA

FORT MADISON
MUNI (FSW).....**RNAV (GPS) Rwy 17¹**
RNAV (GPS) Rwy 35¹
VOR/DME-A²

¹Category D, 800-2¹/₄.

²NA when local weather not available.

GRINNELL, IA

GRINNELL RGNL (GGI).....**RNAV (GPS) Rwy 13**
RNAV (GPS) Rwy 31
VOR/DME Rwy 31

NA when local weather not available.

HARRISONVILLE, MO

LAWRENCE SMITH
MEMORIAL (LRY).....**RNAV (GPS) Rwy 17**
RNAV (GPS) Rwy 35

NA when local weather not available.

INDEPENDENCE, IA

JAMES H CONNELL FLD AT INDEPENDENCE
MUNI (IIB).....**RNAV (GPS) Rwy 18**
RNAV (GPS) Rwy 36

NA when local weather not available.

Category D, 1500-3.

IOWA CITY, IA

IOWA CITY
MUNI (IOW).....**RNAV (GPS) Rwy 25¹**
RNAV (GPS) Rwy 30¹
VOR-A

NA when local weather not available.

¹Category C, 800-2¹/₄; Category D, 800-2¹/₄.

IOWA FALLS, IA

IOWA FALLS
MUNI (IFA).....**RNAV (GPS) Rwy 13**
RNAV (GPS) Rwy 31

NA when local weather not available.

03 DEC 2020 to 31 DEC 2020

03 DEC 2020 to 31 DEC 2020

NAME ALTERNATE MINIMUMS

JEFFERSON CITY, MO

JEFFERSON CITY
MEMORIAL (JEF).....**ILS or LOC Rwy 30¹**
RNAV (GPS) Rwy 12²
RNAV (GPS) Rwy 30²

NA when local weather not available.
¹ILS, Categories A, B, 800-2; Category C, 800-2½;
Category D, 1100-3; LOC, Category C, 800-2½;
Category D, 1100-3.
²Category C, 800-2½; Category D, 1100-3.

JOPLIN, MO

JOPLIN
RGNL (JLN).....**ILS or LOC Rwy 18¹**
ILS or LOC/NDB Rwy 13^{2,3}
LOC BC Rwy 31²

¹NA when control tower closed.
²NA when tower closed.
³ILS, Category D, 700-2.

KAISER/LAKE OZARK, MO

LEE C. FINE
MEMORIAL (AIZ).....**RNAV (GPS) Rwy 4**
RNAV (GPS) Rwy 22
VOR Rwy 4

NA when local weather not available.

KANSAS CITY, MO

CHARLES B WHEELER
DOWNTOWN (MCK).....**ILS or LOC Rwy 3¹**
ILS or LOC Rwy 19²
RNAV (GPS) Rwy 3³
RNAV (GPS) Rwy 19⁴
RNAV (GPS) Rwy 21³

¹LOC, Categories A, B, 900-2;
Categories C, D, 900-2½.
²ILS, Categories A, B, C 800-2;
Category D, 800-2½; LOC, Category D, 800-2½.
³Category D, 800-2½.
⁴Category D, 900-3.

KANSAS CITY

INTL (MCI).....**ILS or LOC Rwy 1L**
ILS or LOC Rwy 19R

NA when control tower closed.

KEOKUK, IA

KEOKUK MUNI (EOK).....**NDB Rwy 14**
RNAV (GPS) Rwy 8
RNAV (GPS) Rwy 14
RNAV (GPS) Rwy 26
RNAV (GPS) Rwy 32

NA when local weather not available.

KNOXVILLE, IA

KNOXVILLE
MUNI (OXV).....**RNAV (GPS) Rwy 15**
RNAV (GPS) Rwy 33

NA when local weather not available.

NAME ALTERNATE MINIMUMS

LE MARS, IA

LE MARS MUNI (LRJ).....**RNAV (GPS) Rwy 18**
RNAV (GPS) Rwy 36

NA when local weather not available.

LEE'S SUMMIT, MO

LEE'S SUMMIT
MUNI (LXT).....**RNAV (GPS) Rwy 11**
RNAV (GPS) Rwy 18¹
RNAV (GPS) Rwy 29¹
RNAV (GPS) Rwy 36¹
VOR-A¹

Category C, 800-2½; Category D, 800-2½.
¹NA when local weather not available.

MALDEN, MO

MALDEN
RGNL (MAW).....**RNAV (GPS) Rwy 18**

NA when local weather not available.

MARSHALLTOWN, IA

MARSHALLTOWN
MUNI (MIW).....**RNAV (GPS) Rwy 13¹**
RNAV (GPS) Rwy 31¹
VOR Rwy 13
VOR Rwy 31

Category D, 900-2½.
¹NA when local weather not available.

MASON CITY, IA

MASON CITY
MUNI (MCW).....**ILS or LOC Rwy 36**
LOC BC Rwy 18
RNAV (GPS) Rwy 18
RNAV (GPS) Rwy 30
RNAV (GPS) Rwy 36
VOR Rwy 36

NA when local weather not available.

MAURICE, IA

SIOUX COUNTY
RGNL (SXK).....**RNAV (GPS) Rwy 17**
RNAV (GPS) Rwy 35

NA when local weather not available.
Category D, 800-2½.

MONETT, MO

MONETT RGNL (HFJ).....**RNAV (GPS) Rwy 18**
RNAV (GPS) Rwy 36

NA when local weather not available.

MONTICELLO, IA

MONTICELLO
RGNL (MXO).....**RNAV (GPS) Rwy 15**
RNAV (GPS) Rwy 33

NA when local weather not available.

03 DEC 2020 to 31 DEC 2020

03 DEC 2020 to 31 DEC 2020

NAME ALTERNATE MINIMUMS

MOUNT PLEASANT, IA

MOUNT PLEASANT
MUNI (MPZ).....RNAV (GPS) Rwy 15
RNAV (GPS) Rwy 33
NA when local weather not available.

MUSCATINE, IA

MUSCATINE
MUNI (MUT).....RNAV (GPS) Rwy 6¹²
RNAV (GPS) Rwy 12²
RNAV (GPS) Rwy 24³
RNAV (GPS) Rwy 30²

¹Categories A, B, C, D, 800-2½.²NA when local weather not available.³Category D, 1000-3.**NEOSHO, MO**

NEOSHO HUGH
ROBINSON (EOS).....RNAV (GPS) Rwy 1
RNAV (GPS) Rwy 19
NA when local weather not available.

NEWTON, IA

NEWTON MUNI-EARL JOHNSON
FIELD (TNU).....RNAV (GPS) Rwy 14
RNAV (GPS) Rwy 32
NA when local weather not available.

OSCEOLA, IA

OSCEOLA
MUNI (I75).....RNAV (GPS) Rwy 18
RNAV (GPS) Rwy 36
NA when local weather not available.

OSKALOOSA, IA

OSKALOOSA
MUNI (OOA).....RNAV (GPS) Rwy 13
RNAV (GPS) Rwy 31
NA when local weather not available.

OTTUMWA, IA

OTTUMWA
RGNL (OTM).....RNAV (GPS) Rwy 13
RNAV (GPS) Rwy 31
VOR/DME Rwy 13
NA when local weather not available.

PELLA, IA

PELLA MUNI (PEA).....RNAV (GPS) Rwy 16
RNAV (GPS) Rwy 34
NA when local weather not available.

PERRY, IA

PERRY MUNI (PRO).....RNAV (GPS) Rwy 14
RNAV (GPS) Rwy 32
NA when local weather not available.

NAME ALTERNATE MINIMUMS

PERRYVILLE, MO

PERRYVILLE
RGNL (PCD).....RNAV (GPS) Rwy 2¹²
RNAV (GPS) Rwy 20³
VOR-A³

¹NA when local weather not available.²Categories A, B, C, D, 900-3.³Category D, 800-2½.**RED OAK, IA**

RED OAK
MUNI (RDK).....RNAV (GPS) Rwy 17
NA when local weather not available.

ROLLA-VICHY, MO

ROLLA NATIONAL (VIH).....RNAV (GPS) Rwy 4
VOR Rwy 22
VOR/DME Rwy 4
NA when local weather not available.

ST. CHARLES, MO

ST CHARLES COUNTY
SMARTT (SET).....RNAV (GPS) Rwy 18
VOR Rwy 18
NA when local weather not available.

ST. JOSEPH, MO

ROSECRANS
MEMORIAL (STJ).....ILS or LOC Rwy 35¹²
LOC BC Rwy 17¹³
RNAV (GPS) Rwy 13⁴⁵
RNAV (GPS) Rwy 17⁴⁶
RNAV (GPS) Rwy 31³⁴
RNAV (GPS) Rwy 35⁴⁶
VOR or TACAN Rwy 17⁶
VOR or TACAN Rwy 35⁶

¹NA when control tower closed.²LOC, Category C, 800-2½; Category D, 900-2½; Category E, 1000-3.³Category C, 800-2½; Category D, 900-2½.⁴NA when local weather not available.⁵Category C, 800-2½; Category D, 900-2½.⁶Category C, 800-2½; Category D, 900-2½; Category E, 1000-3.**ST. LOUIS, MO**

SPIRIT OF
ST. LOUIS (SUS).....ILS or LOC Rwy 8R²³
ILS or LOC Rwy 26L²⁴
RNAV (GPS) Rwy 8L¹
RNAV (GPS) Rwy 8R¹⁵
RNAV (GPS) Rwy 26L¹⁶
RNAV (GPS) Rwy 26R¹

¹NA when local weather not available.²NA when control tower closed.³ILS, Categories A, B, C, 700-2; Category D, 700-2½. LOC, NA.⁴ILS, Categories A, B, C, 700-2; Category D, 700-2½. LOC, Category D, 800-2½.⁵Category D, 800-2½.⁶Category D, 900-3.

NAME ALTERNATE MINIMUMS

SEDALIA, MO

SEDALIA
RGNL (DMO).....**RNAV (GPS) Rwy 18**
RNAV (GPS) Rwy 36

NA when local weather not available.
Category D, 800-2¼.

SHELDON, IA

SHELDON
RGNL (SHL).....**RNAV (GPS) Rwy 15**
RNAV (GPS) Rwy 33

NA when local weather not available.

SHENANDOAH, IA

SHENANDOAH
MUNI (SDA).....**RNAV (GPS) Rwy 4**
VOR/DME Rwy 12

NA when local weather not available.

SIOUX CITY, IA

SIOUX GATEWAY/BRIGADIER GENERAL BUD
DAY FLD (SUX).....**ILS or LOC Rwy 13¹²**
ILS or LOC Rwy 31¹²
RNAV (GPS) Rwy 13³⁵
RNAV (GPS) Rwy 17⁴
RNAV (GPS) Rwy 31³⁵
RNAV (GPS) Rwy 35⁴

¹NA when control tower closed.
²LOC, Category D, 800-2¼; Category E, 1000-3.
³Category D, 800-2¼; Category E, 1000-3.
⁴Category D, 800-2¼.
⁵NA when local weather not available.

SPENCER, IA

SPENCER
MUNI (SPW).....**RNAV (GPS) Rwy 12¹**
RNAV (GPS) Rwy 18
RNAV (GPS) Rwy 30¹
RNAV (GPS) Rwy 36
VOR Rwy 30¹

NA when local weather not available.
¹Category C, 800-2¼, Category D, 800-2½.

SPRINGFIELD, MO

SPRINGFIELD-BRANSON
NATIONAL (SGF).....**ILS or LOC Rwy 2¹**
ILS or LOC Rwy 14⁴
RNAV (GPS) Rwy 2²
RNAV (GPS) Rwy 20²
RNAV (GPS) Rwy 32²
VOR/DME or TACAN Rwy 2³
VOR or TACAN Rwy 20³

¹ILS, Category D, 700-2, Category E, 900-3. LOC, Category E, 900-3.
²NA when local weather not available.
³Category E, 800-2¼.
⁴Category D, 700-2.

NAME ALTERNATE MINIMUMS

VINTON, IA

VINTON VETERANS MEMORIAL
AIRPARK (VTI).....**RNAV (GPS) Rwy 9**
RNAV (GPS) Rwy 27

NA when local weather not available.

WARRENSBURG, MO

SKYHAVEN (RCM).....**RNAV (GPS) Rwy 1**
RNAV (GPS) Rwy 19
VOR-A

NA when local weather not available.

WASHINGTON, IA

WASHINGTON
MUNI (AWG).....**RNAV (GPS) Rwy 13**
RNAV (GPS) Rwy 18
RNAV (GPS) Rwy 31
RNAV (GPS) Rwy 36
VOR Rwy 36

Category C, 800-2¼.

WASHINGTON, MO

WASHINGTON
RGNL (FYG).....**RNAV (GPS) Rwy 15**
RNAV (GPS) Rwy 33
VOR-A

Category C, 800-2¼.
NA when local weather not available.

WATERLOO, IA

WATERLOO
RGNL (ALO).....**ILS or LOC Rwy 12¹²**
LOC BC Rwy 30¹²
RNAV (GPS) Rwy 12³
RNAV (GPS) Rwy 18³
RNAV (GPS) Rwy 30³
RNAV (GPS) Rwy 36³
VOR Rwy 12³
VOR Rwy 18³⁴

¹NA when control tower closed.
²LOC, Category D, 800-2¼.
³Category D, 800-2¼.
⁴NA when local weather not available.

WEBSTER CITY, IA

WEBSTER CITY
MUNI (EBS).....**RNAV (GPS) Rwy 14**
RNAV (GPS) Rwy 32
VOR/DME Rwy 14

NA when local weather not available.

WEST PLAINS, MO

WEST PLAINS
RGNL (UNO).....**RNAV (GPS) Rwy 18**
RNAV (GPS) Rwy 36

NA when local weather not available.

03 DEC 2020 to 31 DEC 2020

03 DEC 2020 to 31 DEC 2020