

WAAS CH <b>78014</b> <b>W12A</b>	APP CRS <b>117°</b>	Rwy Idg <b>7508</b> TDZE <b>3002</b> Apt Elev <b>3011</b>
--	------------------------	---

# RNAV (GPS) RWY 12

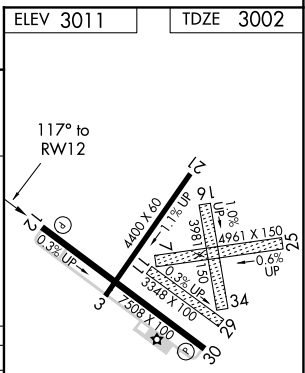
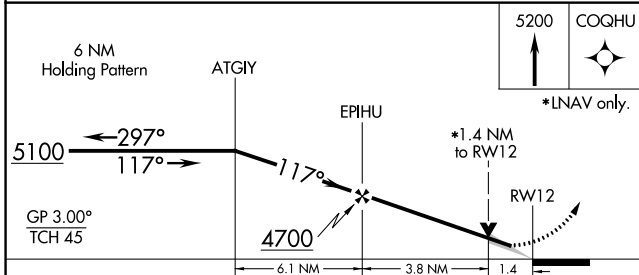
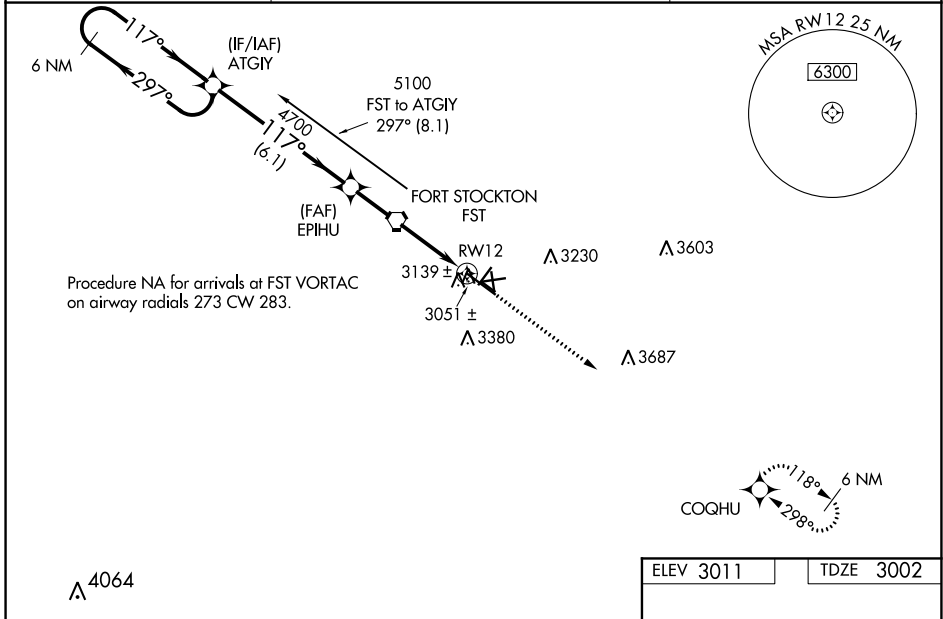
FORT STOCKTON-PECOS COUNTY (F'ST)

RNP APCH.

▼ For uncompensated Baro-VNAV systems, LNAV/VNAV NA below -21°C (-5°F) or above 43°C (109°F). When local altimeter setting not received, use Pecos altimeter setting and increase all DA 152 feet and all MDA 160 feet, increase LPV visibility ½ mile all Cats, LNAV/VNAV visibility ½ mile all Cats, LNAV Cat C/D visibility ½ mile, Circling Cat C visibility ¾ mile, Cat D visibility ½ mile. Baro-VNAV and VDP NA when using Pecos altimeter setting. Circling NA to Rwy 7-25, 11-29 and 16-34. Circling Rwy 3, 21, 30 NA at night.

MISSED APPROACH: Climb to 5200 direct COGHU and hold.

ASOS <b>118.525</b>	ALBUQUERQUE CENTER <b>135.875 292.15</b>	UNICOM <b>122.8 (CTAF) 0</b>
------------------------	---	---------------------------------



CATEGORY	A	B	C	D
LPV DA	3252-1 250 (300-1)			
LNAV/VNAV DA	3409-1½ 407 (400-1½)			
LNAV MDA	3480-1	478 (500-1)	3480-1¼ 478 (500-1¼)	3480-1½ 478 (500-1½)
CIRCLING	3540-1 529 (600-1)	3660-1 649 (700-1)	3740-2 729 (800-2)	3760-2½ 749 (800-2½)

SC-3, 08 SEP 2022 to 06 OCT 2022

SC-3, 08 SEP 2022 to 06 OCT 2022

APP CRS	Rwy Idg	<b>7508</b>
<b>298°</b>	TDZE	<b>3011</b>
	Apt Elev	<b>3011</b>

# RNAV (GPS) RWY 30

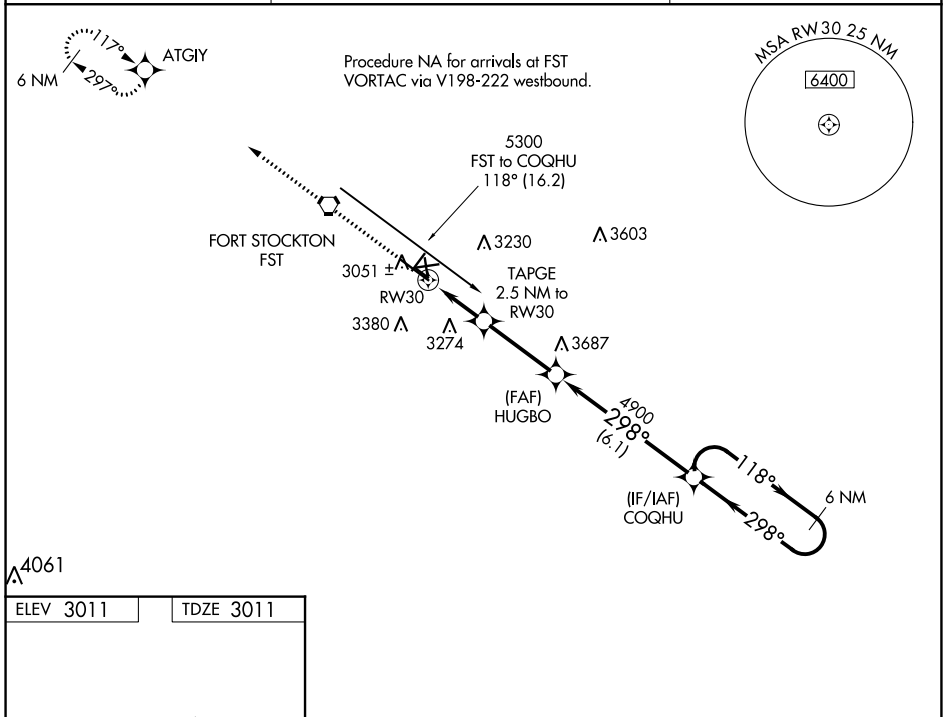
FORT STOCKTON-PECOS COUNTY (FST)

RNP APCH.

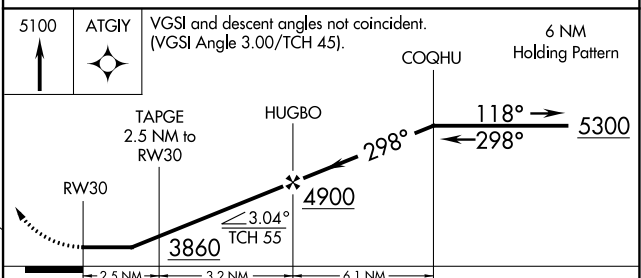
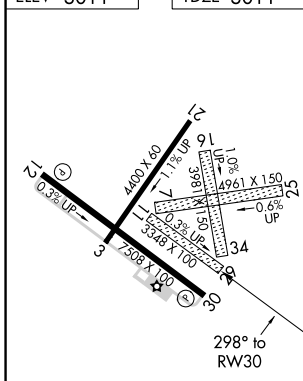
▼ Rwy 30 helicopter visibility reduction below 1 SM NA. When local altimeter setting not received, use Pecos altimeter setting and increase all MDA 160 feet, increase LNAV Cat C/D visibility ½ mile, Circling Cat C visibility ¾ mile, Cat D visibility ½ mile. Circling NA to Rwys 7-25, 11-29 and 16-34. Straight-in Rwy 30 NA at night, Circling Rwy 3, 21, 30 NA at night.

▲ MISSED APPROACH: Climb to 5100 direct ATGIY and hold.

ASOS <b>118.525</b>	ALBUQUERQUE CENTER <b>135.875 292.15</b>	UNICOM <b>122.8 (CTAF) 0</b>
------------------------	---	---------------------------------



ELEV <b>3011</b>	TDZE <b>3011</b>
------------------	------------------



CATEGORY	A	B	C	D
LNAV MDA	3500-1	489 (500-1)	3500-1¼ 489 (500-1¼)	3500-1½ 489 (500-1½)
CIRCLING	3540-1 529 (600-1)	3660-1 649 (700-1)	3740-2 729 (800-2)	3760-2½ 749 (800-2½)

SC-3, 08 SEP 2022 to 06 OCT 2022

SC-3, 08 SEP 2022 to 06 OCT 2022

VORTAC FST <b>116.9</b> Chan <b>116</b>	APP CRS <b>116°</b>	Rwy Idg TDZE Apt Elev <b>7508</b> <b>3002</b> <b>3011</b>
---	------------------------	--

# VOR RWY 12

FORT STOCKTON-PECOS COUNTY (FST)

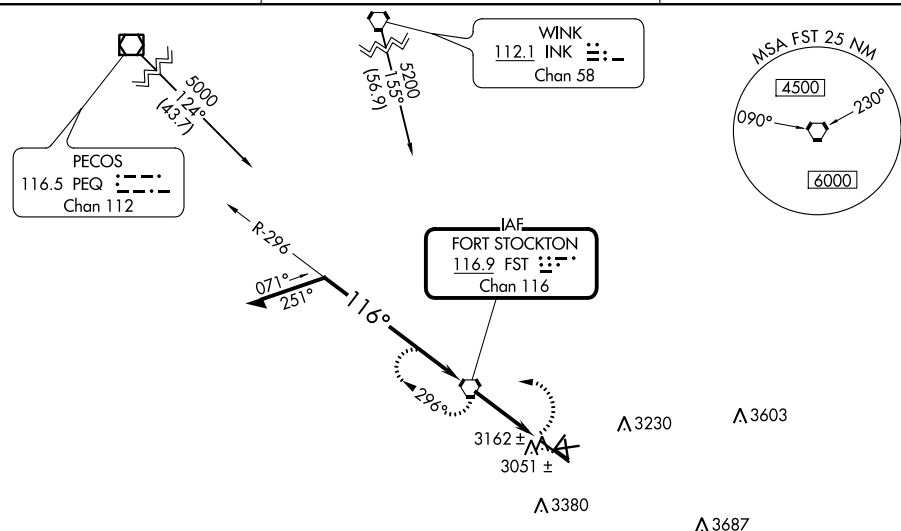
**⚠** Circling NA to Rwys 7-25, 11-29 and 16-34.  
**⚠** Circling Rwy 3, 21, 30 NA at night.

MISSED APPROACH: Climbing left turn to 5000 direct FST VORTAC and hold.

ASOS  
**118.525**

ALBUQUERQUE CENTER  
**135.875 292.15**

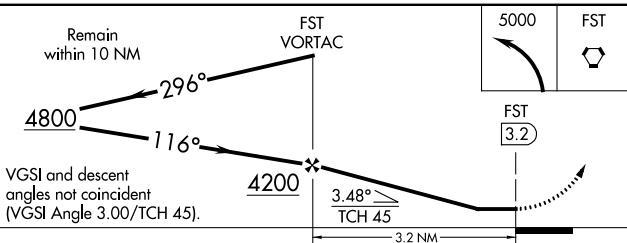
UNICOM  
**122.8** (CTAF) **0**



SC-3, 08 SEP 2022 to 06 OCT 2022

SC-3, 08 SEP 2022 to 06 OCT 2022

△ 4064



VGSI and descent angles not coincident (VGSI Angle 3.00/TCH 45).

