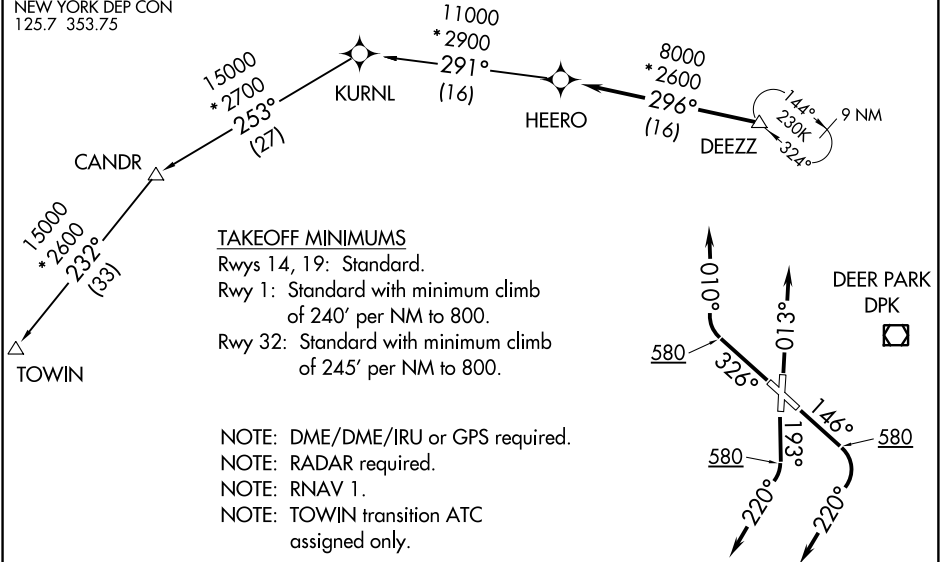


# DEZZ FOUR DEPARTURE (RNAV)

ATIS  
126.65  
CLNC DEL  
128.25  
GND CON  
121.6 269.6  
REPUBLIC TOWER \*  
118.8 279.65  
NEW YORK DEP CON  
125.7 353.75

**TOP ALTITUDE:  
3000**



## DEPARTURE ROUTE DESCRIPTION

TAKEOFF RWY 1: Climb heading 013°, thence . . . .

TAKEOFF RWY 14: Climb heading 146° to 580, then climbing right turn heading 220°, thence . . . .

TAKEOFF RWY 19: Climb heading 193° to 580, then climbing right turn heading 220°, thence . . . .

TAKEOFF RWY 32: Climb heading 326° to 580, then climbing right turn heading 010°, thence . . . .

. . . . expect vectors to DEZZ, then on track 296° to HEERO. Maintain 3000.  
Expect clearance to filed altitude/flight level within ten (10) minutes after departure.

CANDR TRANSITION (DEZZ4.CANDR)

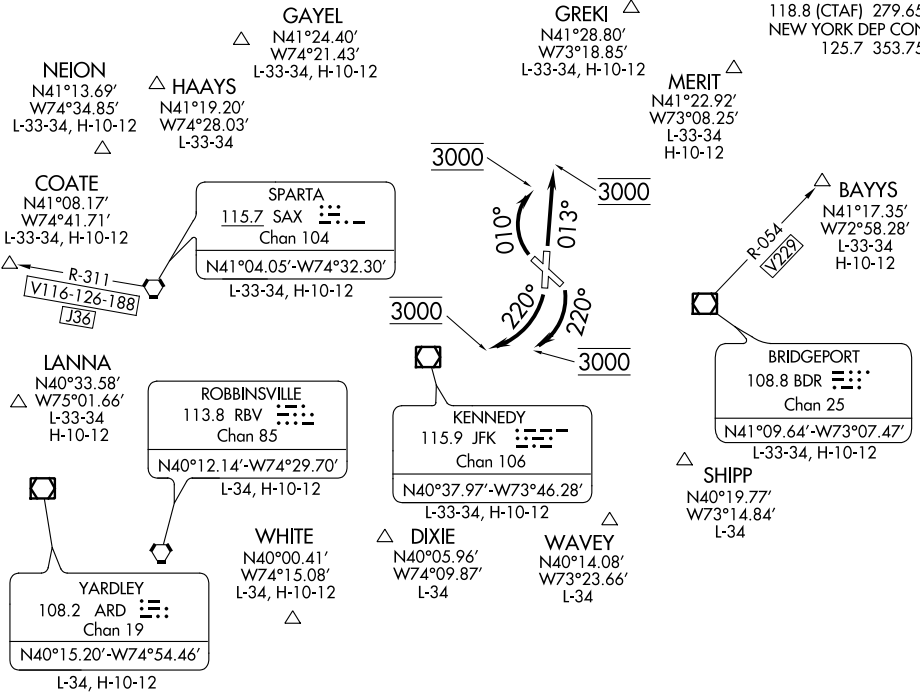
TOWIN TRANSITION (DEZZ4.TOWIN)

# FARMINGDALE FIVE DEPARTURE

REPUBLIC (FRG)  
FARMINGDALE, NEW YORK

**TOP ALTITUDE:  
3000**

ATIS 126.65  
CLNC DEL 128.25  
GND CON 121.6 269.6  
REPUBLIC TOWER \* 118.8 (CTAF) 279.65  
NEW YORK DEP CON 125.7 353.75



NE-2, 01 MAR 2018 to 29 MAR 2018

NE-2, 01 MAR 2018 to 29 MAR 2018

**TAKEOFF MINIMUMS:**

Rwys 14, 19: Standard.  
Rwy 1: 300-1¼ or standard with minimum climb of 220' per NM to 300, or alternatively, with standard takeoff minimums and a normal 200' per NM climb gradient, takeoff must occur no later than 1500' prior to DER.  
Rwy 32: 300-1¾ or standard with minimum climb of 215' per NM to 400, or alternatively, with standard takeoff minimums and a normal 200' per NM climb gradient, takeoff must occur no later than 1500' prior to DER.

NOTE: Chart not to scale.

## DEPARTURE ROUTE DESCRIPTION

**TAKEOFF RUNWAY 1:** Climb heading 013°, maintain 3000 feet, thence . . . .  
**TAKEOFF RUNWAYS 14 and 19:** Climbing right turn via heading 220°, maintain 3000 feet, thence. . . .  
**TAKEOFF RUNWAY 32:** Climbing right turn via heading 010°, maintain 3000 feet, thence . . . .  
. . . . on vectors to assigned route/fix. Expect clearance to filed altitude/flight level 10 minutes after departure.

**BAYYS DEPARTURES:** Expect vectors to BDR VOR/DME R-054 to BAYYS INT.  
**COATE DEPARTURES:** Expect vectors to SAX VORTAC/SAX R-311 to COATE INT.

# FARMINGDALE FIVE DEPARTURE

FARMINGDALE, NEW YORK  
REPUBLIC (FRG)