

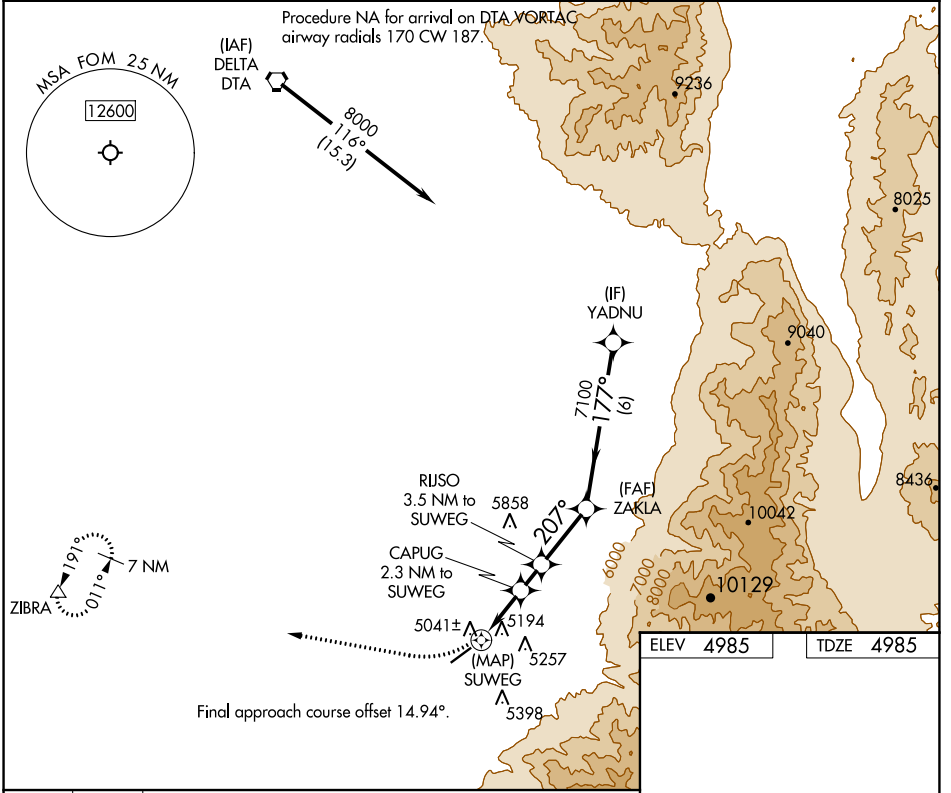
APP CRS	Rwy Idg	5040
207°	TDZE	4985
	Apt Elev	4985

RNAV (GPS) RWY 22

FILLMORE MUNI (FOM)

RNP APCH.	MISSED APPROACH: Climbing right turn to 9600 direct ZIBRA and hold, continue climb-in-hold to 9600.
	Rwy 22 helicopter visibility reduction below 3/4 SM NA.

AWOS-3 133.775	SALT LAKE CITY CENTER 125.575 379.275	UNICOM 122.8 (CTAF) 0
--------------------------	---	---------------------------------



9600	ZIBRA	VGSIs and descent angles not coincident (VGSi Angle 3.00/TCH 35).			
		ZAKLA			
		YADNU			
		8000			
		7100			
		6280			
		5900			
		5041±			
		5194			
		5257			
		5398			
		5040 X.75			
		1.4% UP			
		1.3 NM			
		1.2 NM			
		2.6 NM			
		6 NM			
CATEGORY	A	B	C	D	
RNAV MDA	5500-1	515 (600-1)	5500-1 3/8 515 (600-1 3/8)	NA	
CIRCLING	5620-1	635 (700-1)	6200-3 1215 (1300-3)	NA	

ELEV	4985	TDZE	4985
REIL Rws 4 and 22 0			
MIRL Rwy 4-22 0			

SW-4, 09 SEP 2021 to 07 OCT 2021

SW-4, 09 SEP 2021 to 07 OCT 2021

WAAS CH 42917 W04A	APP CRS 041°	Rwy Idg TDZE Apt Elev	5040 4957 4985
--	------------------------	-----------------------------	---

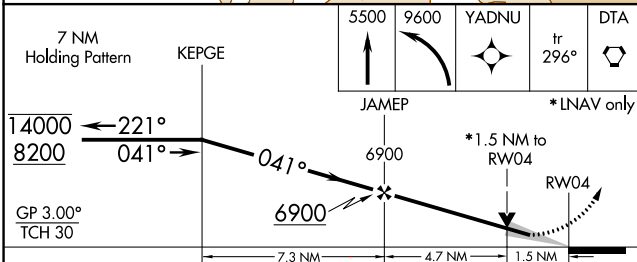
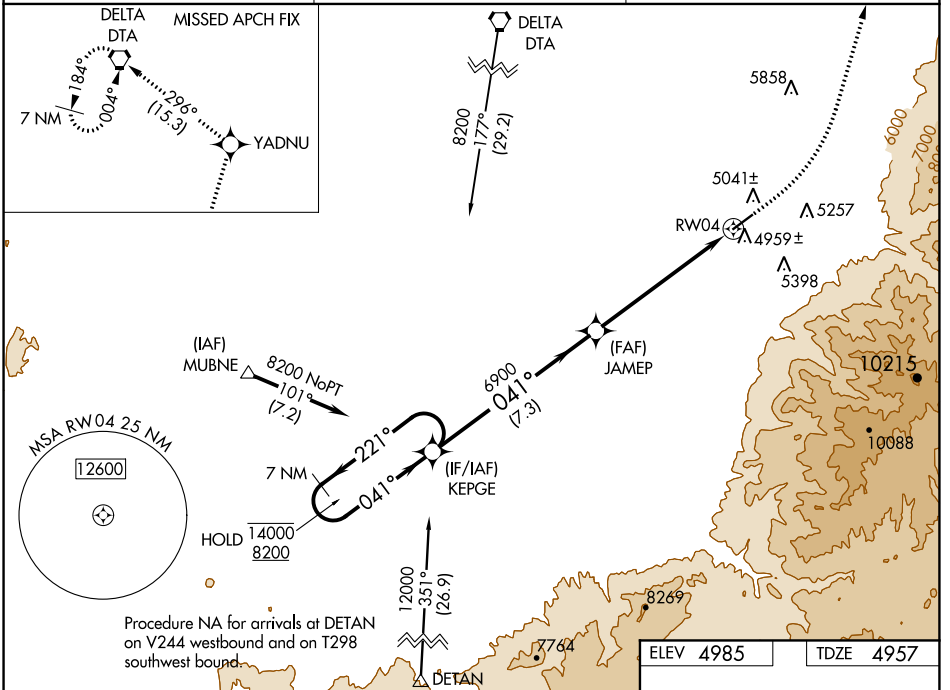
RNAV (GPS) RWY 4

FILLMORE MUNI (FOM)

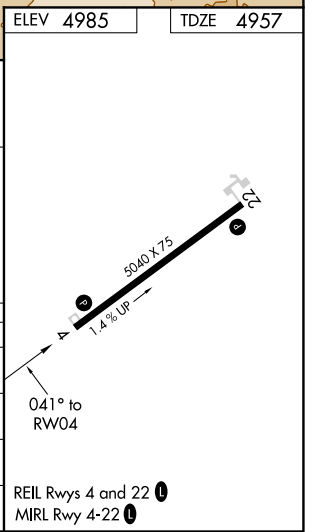
RNP APCH. MISSED APPROACH: Climb to 5500 then climbing left turn to 9600 direct YADNU and on track 296° to DTA VORTAC and hold.

▼ For uncompensated Baro-VNAV systems, procedure NA below -24°C or above 54°C.

AWOS-3 133.775	SALT LAKE CITY CENTER 125.575 379.275	UNICOM 122.8 (CTAF) 0
--------------------------	---	---------------------------------



CATEGORY	A	B	C	D
LPV DA	5214-1		257 (300-1)	NA
LNAV/VNAV DA	5315-1		358 (400-1)	NA
LNAV MDA	5420-1	463 (500-1)	5420-1½ 463 (500-1½)	NA
CIRCLING	5620-1	635 (700-1)	6200-3 1215 (1300-3)	NA



SW-4, 09 SEP 2021 to 07 OCT 2021

SW-4, 09 SEP 2021 to 07 OCT 2021