

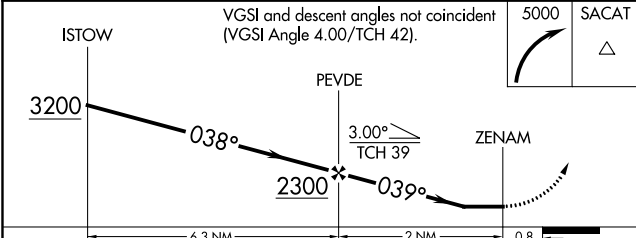
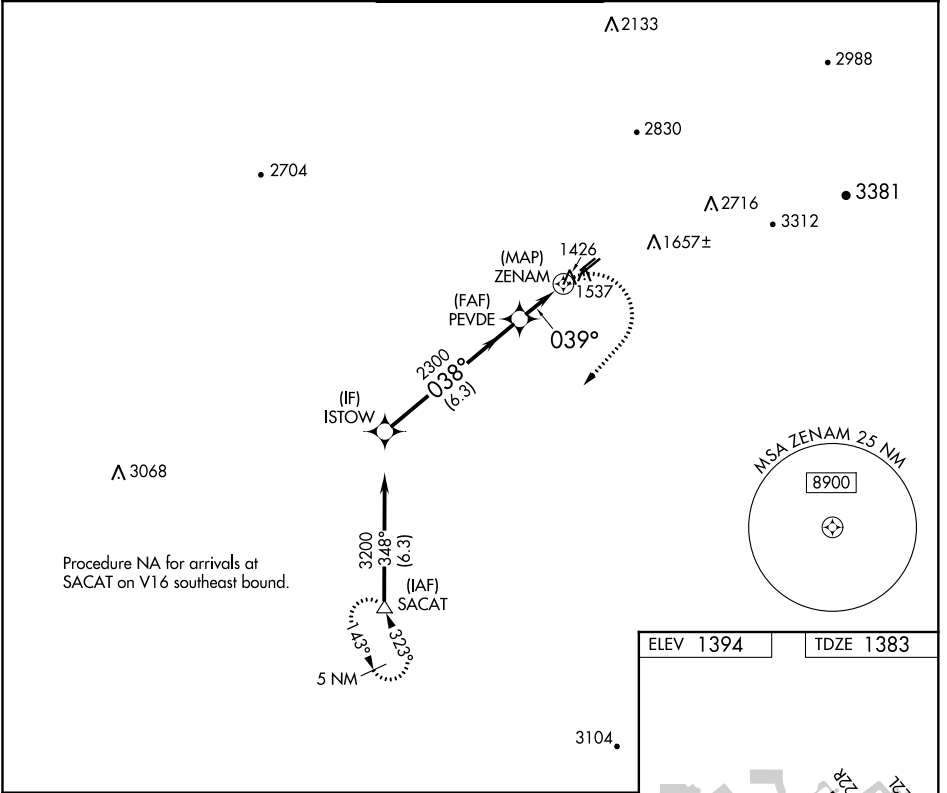
WAAS CH 56625 W04A	APP CRS 039°	Rwy Idg TDZE Apt Elev	3799 1383 1394
--	------------------------	-----------------------------	---

RNAV (GPS) RWY 4L

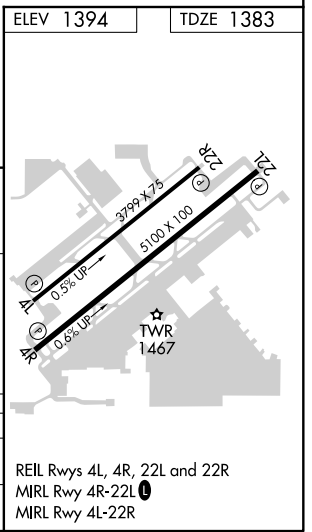
FALCON FLD (F'F'Z)

RNP APCH.		MISSED APPROACH: Climbing right turn to 5000 direct SACAT and hold, continue climb-in-hold to 5000.		
Rwy 4L helicopter visibility reduction below 1 SM NA.				

ATIS 118.25	PHOENIX APP CON 120.7 239.0	FALCON TOWER * 124.6 (CTAF) 0	GND CON 121.3	UNICOM 122.95
-----------------------	---------------------------------------	--	-------------------------	-------------------------



CATEGORY	A	B	C	D
LP MDA	1780-1	397 (400-1)	1780-1 1/8 397 (400-1 1/8)	NA
LNAV MDA	1800-1	417 (500-1)	1800-1 1/8 417 (500-1 1/8)	NA



SW-4, 11 AUG 2022 to 08 SEP 2022

SW-4, 11 AUG 2022 to 08 SEP 2022

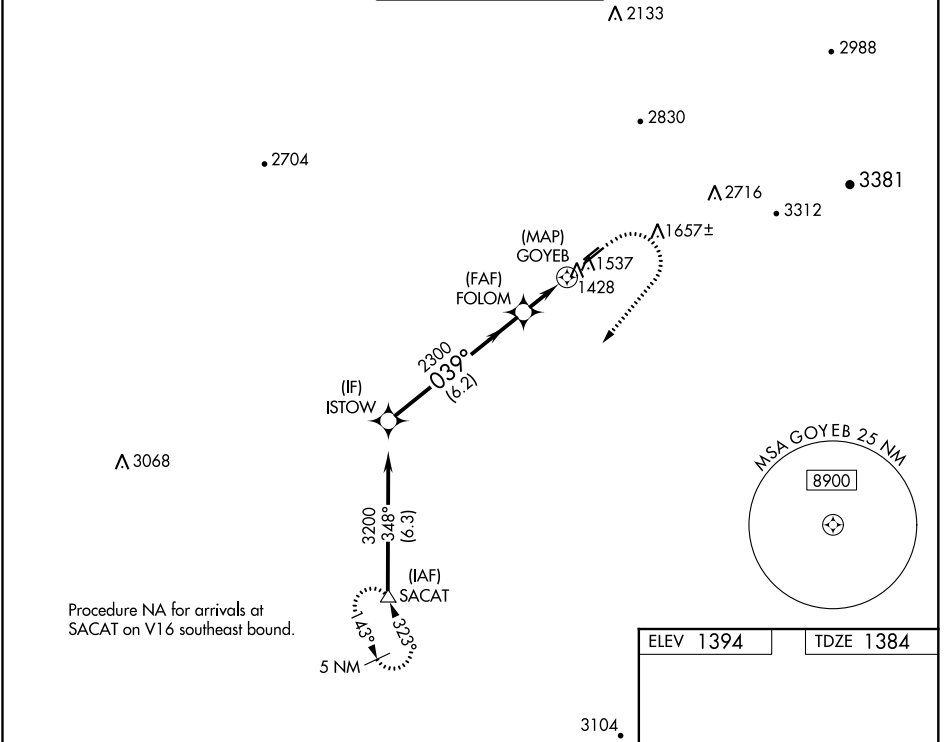
WAAS CH 90525 W04B	APP CRS 039°	Rwy Idg TDZE Apt Elev	5100 1384 1394
--	------------------------	-----------------------------	---

RNAV (GPS) RWY 4R

FALCON FLD (F'F'Z)

RNP APCH.	MISSED APPROACH: Climb to 1900 then climbing right turn to 5000 direct SACAT and hold, continue climb-in-hold to 5000.
-----------	--

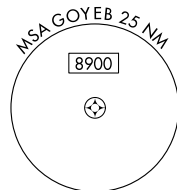
ATIS 118.25	PHOENIX APP CON 120.7 239.0	FALCON TOWER * 124.6 (CTAF) 0	GND CON 121.3	UNICOM 122.95
-----------------------	---------------------------------------	---	-------------------------	-------------------------



SW-4, 11 AUG 2022 to 08 SEP 2022

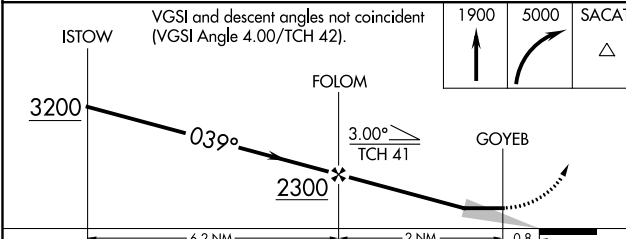
SW-4, 11 AUG 2022 to 08 SEP 2022

Procedure NA for arrivals at SACAT on V16 southeast bound.



ELEV 1394	TDZE 1384
-----------	-----------

REIL Rwy 4R, 4L, 22L and 22R
MIRL Rwy 4R-22L 0
MIRL Rwy 4L-22R



CATEGORY	A	B	C	D
LP MDA	1680-1 296 (300-1)			NA
LNAV MDA	1800-1	416 (500-1)	1800-1 1/8 416 (500-1 1/8)	NA
CIRCLING	1860-1 466 (500-1)	1980-1 586 (600-1)	2040-1 3/4 646 (700-1 3/4)	NA

APP CRS	Rwy Idg	N/A
122°	TDZE	N/A
	Apt Elev	1394

RNAV (GPS)-B

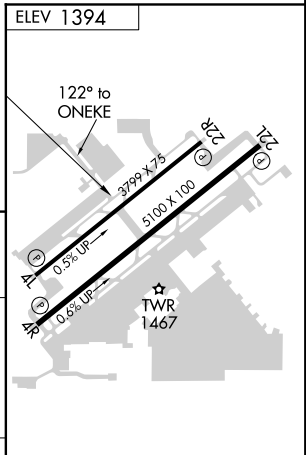
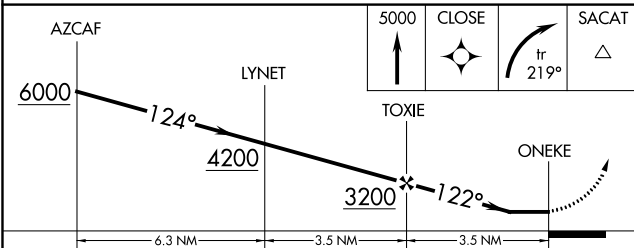
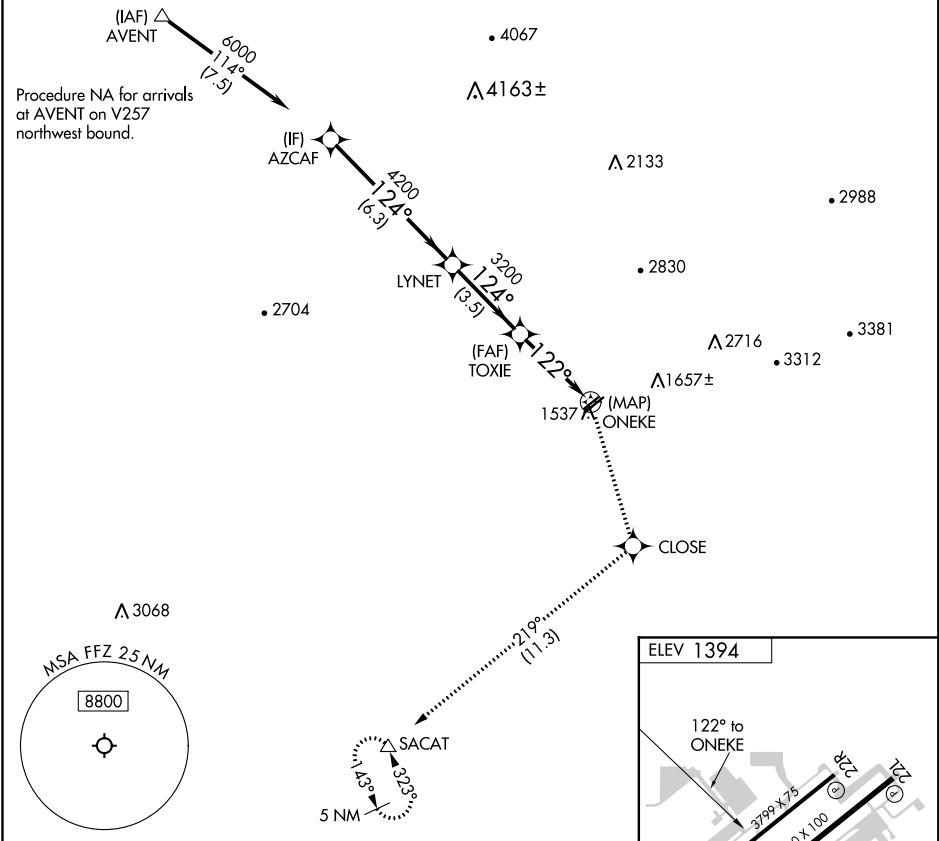
FALCON FLD (F'F'Z)

RNP APCH.

▼ Circling Rwy 22L, 22R NA at night. Circling NA for Cat C southeast of Rwy 4R-22L.

MISSED APPROACH: Climb to 5000 direct CLOSE and right turn on track 219° to SACAT and hold, continue climb-in-hold to 5000.

ATIS 118.25	PHOENIX APP CON 120.7 239.0	FALCON TOWER * 124.6 (CTAF) 0	GND CON 121.3	UNICOM 122.95
-----------------------	---------------------------------------	---	-------------------------	-------------------------



CATEGORY	A	B	C	D
C CIRCLING	1860-1 466 (500-1)	1980-1 586 (600-1)	2040-1¾ 646 (700-1¾)	NA

REIL Rwy 4R, 4L, 22L and 22R
MIRL Rwy 4R-22L **0**
MIRL Rwy 4L-22R

SW-4, 11 AUG 2022 to 08 SEP 2022

SW-4, 11 AUG 2022 to 08 SEP 2022