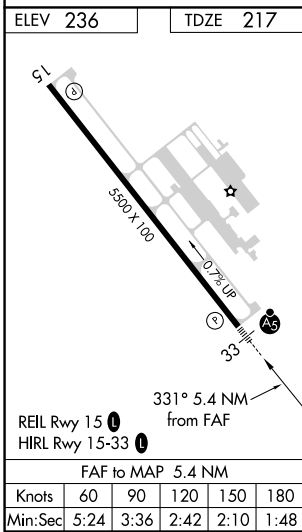
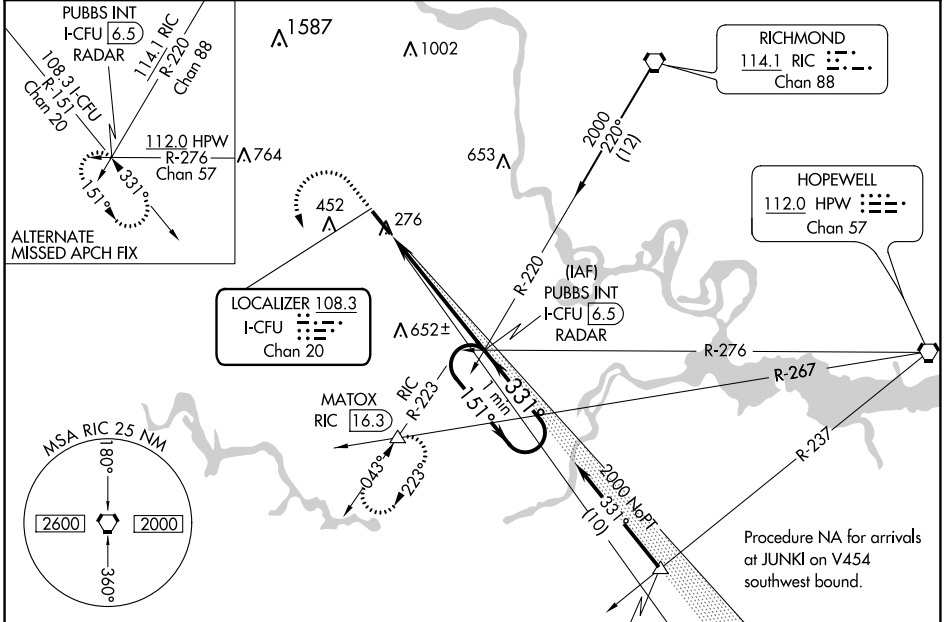


LOC/DME I-CFU <b>108.3</b> Chan 20	APP CRS <b>331°</b>	Rwy ldg 5500 TDZE 217 Apt Elev 236
--	------------------------	---

# ILS or LOC RWY 33

RICHMOND EXECUTIVE-CHESTERFIELD COUNTY (F'CI)

<p><b>▼</b> When local altimeter setting not received, use Richmond Intl altimeter setting and increase all DA 36 feet and all MDA 40 feet; increase S-LOC 33 Cat C and D visibility 1/8 mile. VDP NA with Richmond Intl altimeter setting.</p> <p><b>▲ NA</b></p>	<p><b>MALSR</b></p>	<p><b>MISSED APPROACH:</b> Climb to 800, then climbing left turn to 2000 via heading 148° and RIC VORTAC R-223 to MATOX INT/RIC 16.3 DME and hold.</p>	
<p>AWOS-3PT <b>128.625</b></p>	<p>POTOMAC APP CON <b>126.75 307.2</b></p>	<p>CLNC DEL <b>124.6</b></p>	<p>UNICOM <b>123.05 (CTAF) 0</b></p>



800	2000	RIC R-223	MATOX	PUBBS INT I-CFU [6.5] RADAR	One Minute Holding Pattern
hdg 148°					
*LOC only.	*I-CFU [1.1]	*I-CFU [2.4]			
	1.3 NM	4.1 NM			
CATEGORY	A	B	C	D	
S-ILS 33		417-1/2	200 (200-1/2)		
S-LOC 33	660-1/2	443 (500-1/2)	660-7/8	443 (500-7/8)	
CIRCLING	720-1	484 (500-1)	760-1/2	800-2	
			524 (600-1/2)	564 (600-2)	

GS 3.00°  
TCH 49

NE-3, 03 DEC 2020 to 31 DEC 2020

NE-3, 03 DEC 2020 to 31 DEC 2020

WAAS CH <b>63216</b> <b>W15A</b>	APP CRS <b>151°</b>	Rwy Idg TDZE Apt Elev	<b>5500</b> <b>236</b> <b>236</b>
--	------------------------	-----------------------------	---

# RNAV (GPS) RWY 15

RICHMOND EXECUTIVE-CHESTERFIELD COUNTY (F'CI)

RNP APCH.

**NA** For uncompensated Baro-VNAV systems, LNAV/VNAV NA below -15°C or above 54°C. When local altimeter setting not received, use Richmond Intl altimeter setting and increase all DA 36 feet, and all MDA 40 feet, increase LNAV/VNAV all Cats visibility 1/4 mile. VDP and Baro-VNAV NA when using Richmond Intl altimeter setting.

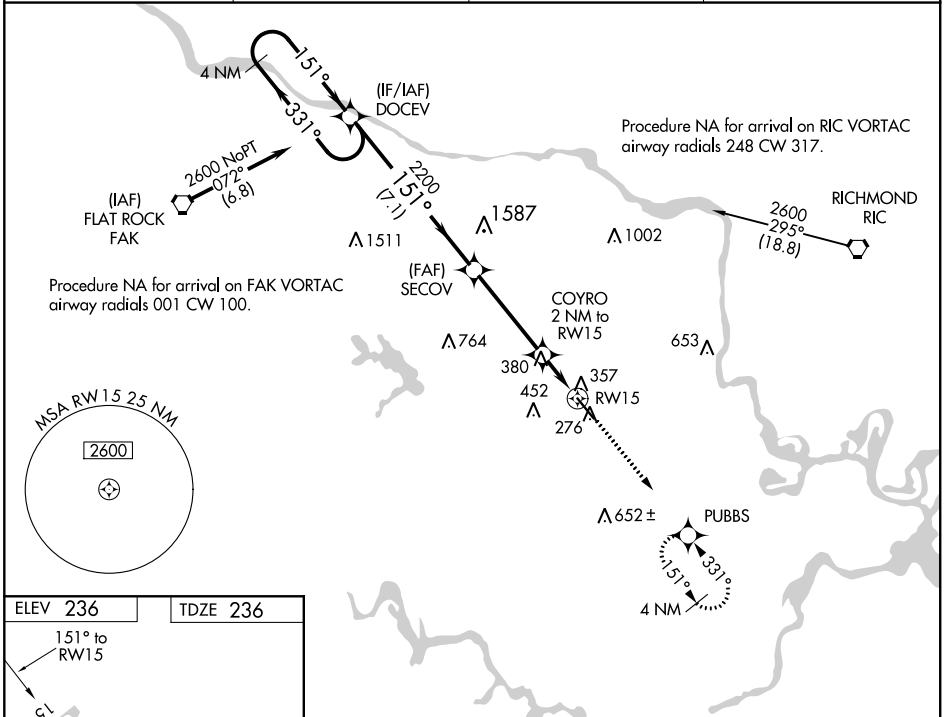
MISSED APPROACH: Climb to 2000 direct PUBBS and hold.

AWOS-3PT  
**128.625**

POTOMAC APP CON  
**126.75 307.2**

CLNC DEL  
**124.6**

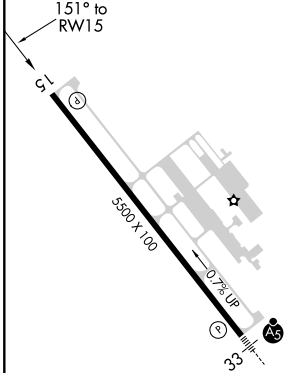
UNICOM  
**123.05 (CTAF)**



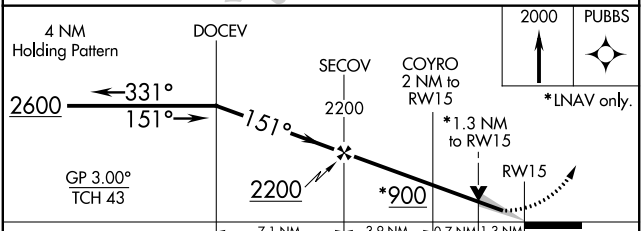
NE-3, 03 DEC 2020 to 31 DEC 2020

NE-3, 03 DEC 2020 to 31 DEC 2020

ELEV <b>236</b>	TDZE <b>236</b>
-----------------	-----------------



REIL Rwy 15 **1**  
HIRL Rwy 15-33 **1**



CATEGORY	A	B	C	D
LPV DA	486-1 250 (300-1)			
LNAV/VNAV DA	692-1½ 456 (500-1½)			
LNAV MDA	680-1 444 (500-1)	680-1⅜ 444 (500-1⅜)	680-1½ 444 (500-1½)	

WAAS CH <b>56221</b> <b>W33A</b>	APP CRS <b>331°</b>	Rwy Idg TDZE Apt Elev	<b>5500</b> <b>217</b> <b>236</b>
--	------------------------	-----------------------------	---

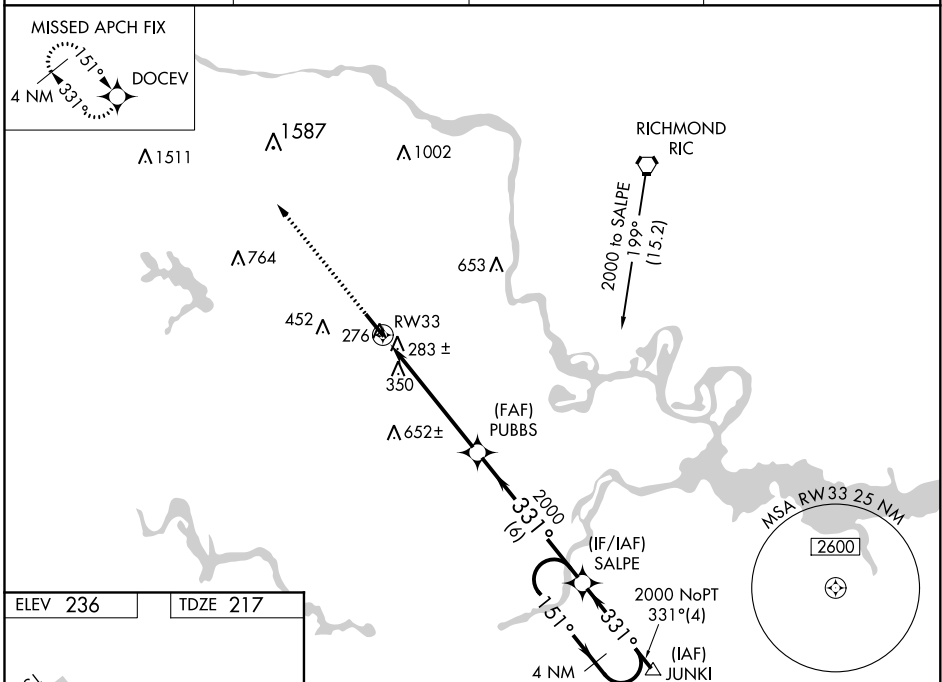
# RNAV (GPS) RWY 33

RICHMOND EXECUTIVE-CHESTERFIELD COUNTY (F'CI)

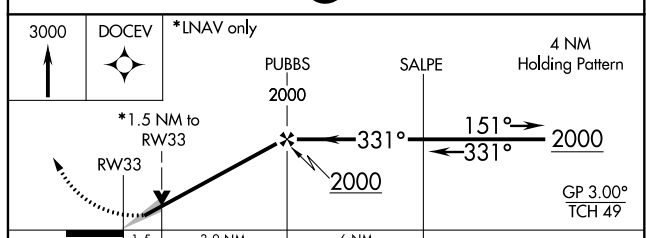
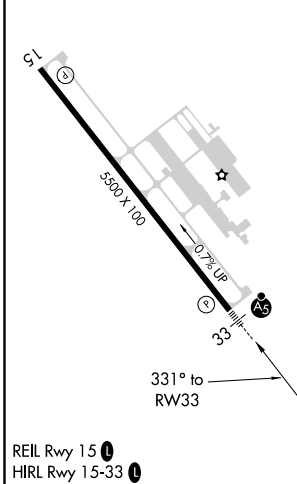
▼ For uncompensated Baro-VNAV systems, LNAV/VNAV NA below -15°C (5°F) or above 54°C (130°F). When local altimeter setting not received, use Richmond Intl altimeter setting and increase all DA 36 feet and all MDA 40 feet; increase LPV and LNAV/VNAV all Cats and LNAV Cats C/D and Circling Cat C visibility ½ mile. DME/DME RNP-0.3 NA. For inop MALSR, increase LPV all Cats visibility to 1 mile and LNAV Cat C/D to 1 ¾ mile. For inop MALSR when using Richmond Intl altimeter setting, increase LPV all Cats visibility to 1 ½ mile. Baro-VNAV and VDP NA when using Richmond Intl altimeter setting.

MALSR  
MISSED APPROACH:  
Climb to 3000 direct  
DOCEV and hold.

AWOS-3PT <b>128.625</b>	POTOMAC APP CON <b>126.75 307.2</b>	CLNC DEL <b>124.6</b>	UNICOM <b>123.05 (CTAF)</b>
----------------------------	--	--------------------------	--------------------------------



ELEV 236	TDZE 217
----------	----------



CATEGORY	A	B	C	D
LPV DA	510-½ 293 (300-½)			
LNAV/VNAV DA	598-⅞ 381 (400-⅞)			
LNAV MDA	720-½	503 (500-½)	720-1	503 (500-1)
CIRCLING	720-1	484 (500-1)	760-1½ 524 (600-1½)	800-2 564 (600-2)

# RNAV (GPS) RWY 33

NE-3, 03 DEC 2020 to 31 DEC 2020

NE-3, 03 DEC 2020 to 31 DEC 2020