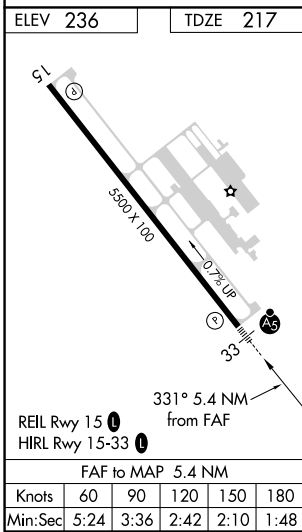
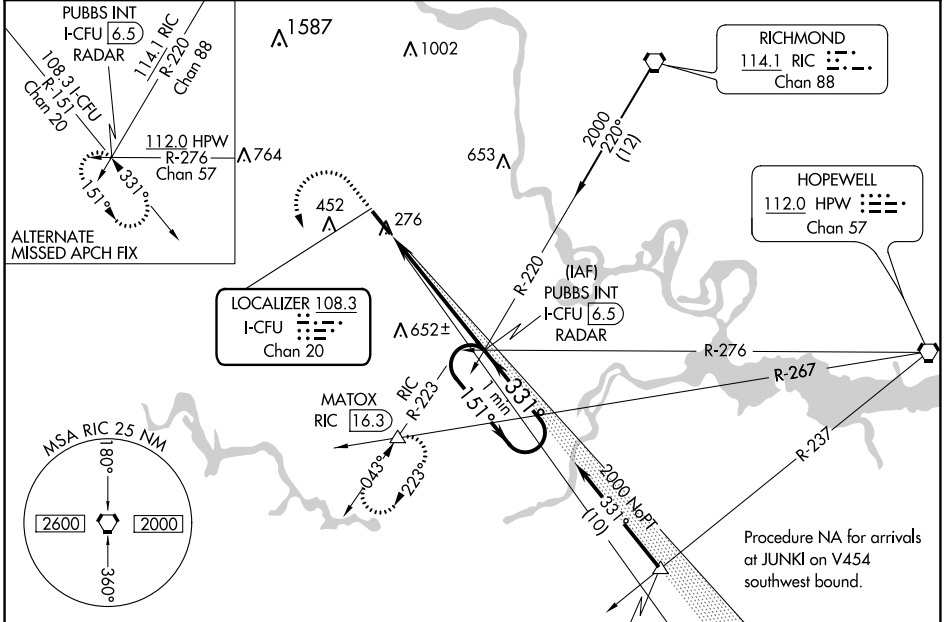


LOC/DME I-CFU 108.3 Chan 20	APP CRS 331°	Rwy ldg TDZE Apt Elev	5500 217 236
--	------------------------	-----------------------------	---

ILS or LOC RWY 33

RICHMOND EXECUTIVE-CHESTERFIELD COUNTY (F'CI)

<p>▼ When local altimeter setting not received, use Richmond Intl altimeter setting and increase all DA 36 feet and all MDA 40 feet; increase S-LOC 33 Cat C and D visibility 1/8 mile. VDP NA with Richmond Intl altimeter setting.</p> <p>▲ NA</p>	<p>MALSR</p>	<p>MISSED APPROACH: Climb to 800, then climbing left turn to 2000 via heading 148° and RIC VORTAC R-223 to MATOX INT/RIC 16.3 DME and hold.</p>	
<p>AWOS-3PT 128.625</p>	<p>POTOMAC APP CON 126.75 307.2</p>	<p>CLNC DEL 124.6</p>	<p>UNICOM 123.05 (CTAF) 0</p>



ELEV 236	TDZE 217
<p>800</p> <p>2000</p> <p>hdg 148°</p> <p>RIC R-223</p> <p>MATOX</p> <p>PUBBS INT I-CFU [6.5] RADAR</p> <p>One Minute Holding Pattern</p>	<p>151°</p> <p>331°</p> <p>2000</p> <p>2000</p> <p>GS 3.00°</p> <p>TCH 49</p>
*LOC only.	
*I-CFU [2.4]	
I-CFU [1.1]	
1.3 NM	
4.1 NM	
CATEGORY	A B C D
S-ILS 33	417-1/2 200 (200-1/2)
S-LOC 33	660-1/2 443 (500-1/2) 660-7/8 443 (500-7/8)
CIRCLING	720-1 484 (500-1) 760-1/2 800-2 524 (600-1/2) 564 (600-2)

NE-3, 03 DEC 2020 to 31 DEC 2020

NE-3, 03 DEC 2020 to 31 DEC 2020

WAAS CH 63216	APP CRS 151°	Rwy Idg 5500
W15A		TDZE 236
		Apt Elev 236

RNAV (GPS) RWY 15

RICHMOND EXECUTIVE-CHESTERFIELD COUNTY (F'CI)

RNP APCH.

NA For uncompensated Baro-VNAV systems, LNAV/VNAV NA below -15°C or above 54°C. When local altimeter setting not received, use Richmond Intl altimeter setting and increase all DA 36 feet, and all MDA 40 feet, increase LNAV/VNAV all Cats visibility 1/4 mile. VDP and Baro-VNAV NA when using Richmond Intl altimeter setting.

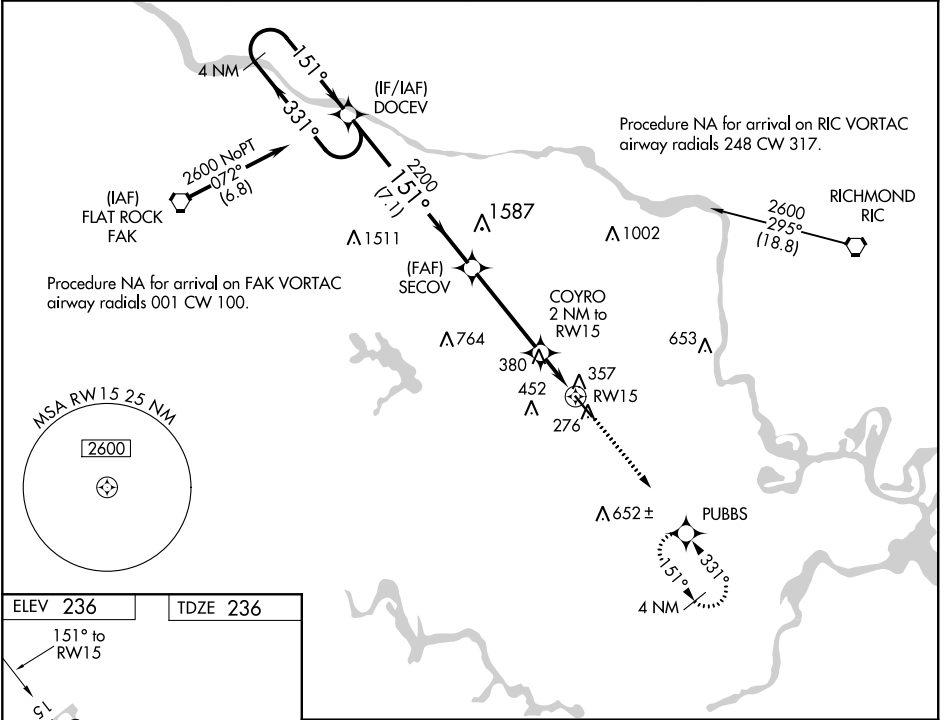
MISSED APPROACH: Climb to 2000 direct PUBBS and hold.

AWOS-3PT
128.625

POTOMAC APP CON
126.75 307.2

CLNC DEL
124.6

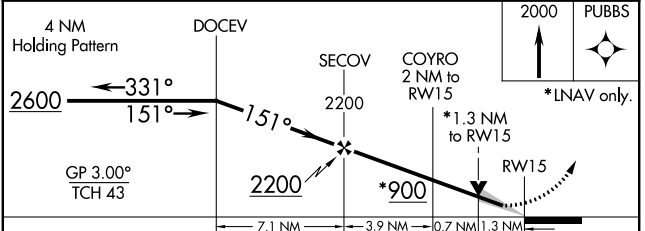
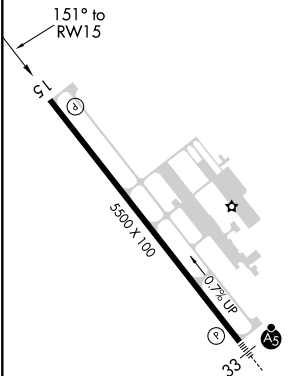
UNICOM
123.05 (CTAF)



NE-3, 03 DEC 2020 to 31 DEC 2020

NE-3, 03 DEC 2020 to 31 DEC 2020

ELEV 236	TDZE 236
-----------------	-----------------



CATEGORY	A	B	C	D
LPV DA	486-1 250 (300-1)			
LNAV/VNAV DA	692-1 1/2 456 (500-1 1/2)			
LNAV MDA	680-1 444 (500-1)	680-1 3/8 444 (500-1 3/8)	680-1 1/2 444 (500-1 1/2)	

REIL Rwy 15 **1**
HIRL Rwy 15-33 **1**

WAAS CH 56221 W33A	APP CRS 331°	Rwy Idg TDZE Apt Elev	5500 217 236
--	------------------------	-----------------------------	---

RNAV (GPS) RWY 33

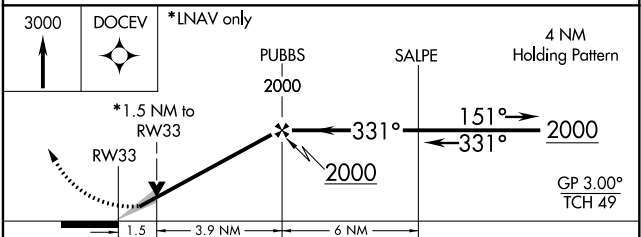
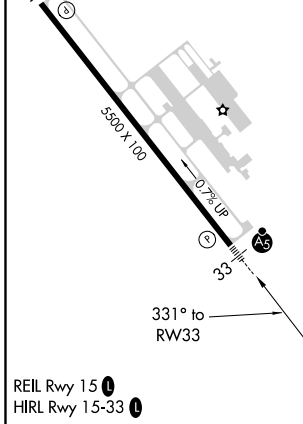
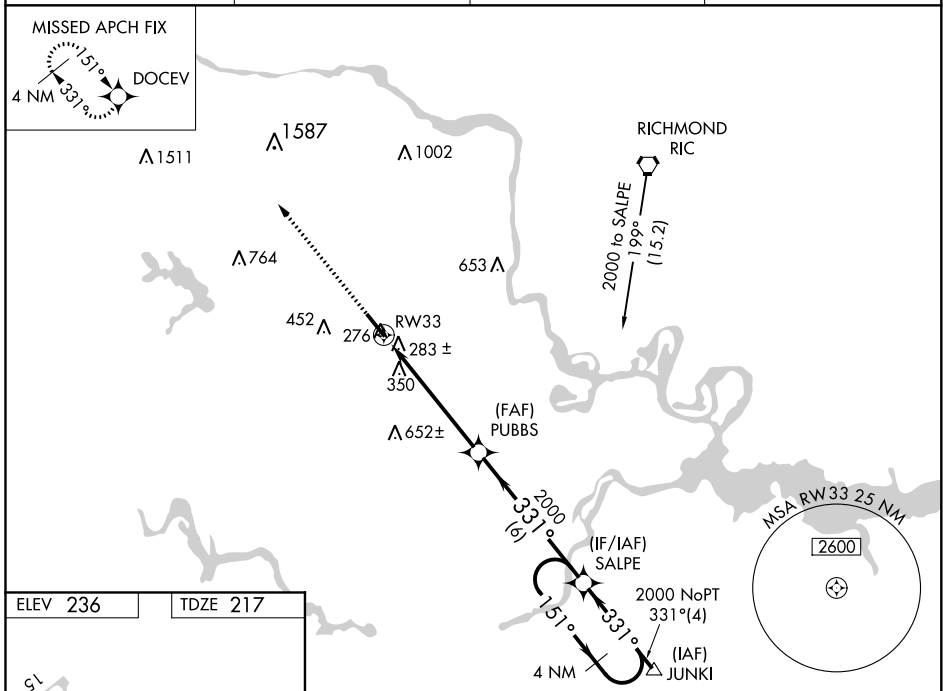
RICHMOND EXECUTIVE-CHESTERFIELD COUNTY (F'CI)

▼ For uncompensated Baro-VNAV systems, LNAV/VNAV NA below -15°C (5°F) or above 54°C (130°F). When local altimeter setting not received, use Richmond Intl altimeter setting and increase all DA 36 feet and all MDA 40 feet; increase LPV and LNAV/VNAV all Cats and LNAV Cats C/D and Circling Cat C visibility 1/8 mile. DME/DME RNP-0.3 NA. For inop MALSR, increase LPV all Cats visibility to 1 mile and LNAV Cat C/D to 1 3/8 mile. For inop MALSR when using Richmond Intl altimeter setting, increase LPV all Cats visibility to 1 1/8 mile. Baro-VNAV and VDP NA when using Richmond Intl altimeter setting.

⚠ NA

MALSR
MISSED APPROACH:
Climb to 3000 direct
DOCEV and hold.

AWOS-3PT 128.625	POTOMAC APP CON 126.75 307.2	CLNC DEL 124.6	UNICOM 123.05 (CTAF)
----------------------------	--	--------------------------	--------------------------------



CATEGORY	A	B	C	D
LPV DA	510-1/2 293 (300-1/2)			
LNAV/VNAV DA	598-7/8 381 (400-7/8)			
LNAV MDA	720-1/2	503 (500-1/2)	720-1	503 (500-1)
CIRCLING	720-1	484 (500-1)	760-1/2 524 (600-1/2)	800-2 564 (600-2)

RNAV (GPS) RWY 33

NE-3, 03 DEC 2020 to 31 DEC 2020

NE-3, 03 DEC 2020 to 31 DEC 2020