

# LOC RWY 21

EAGLE CREEK AIRPARK (EYE)

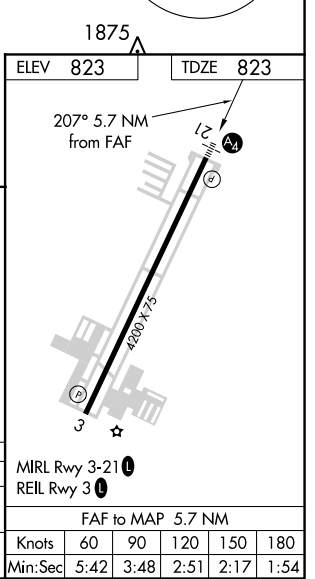
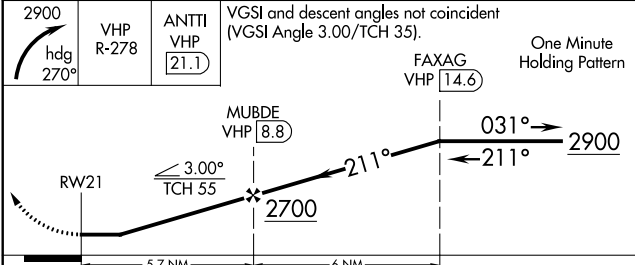
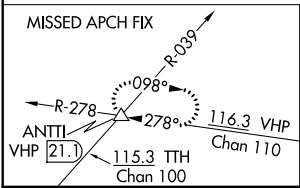
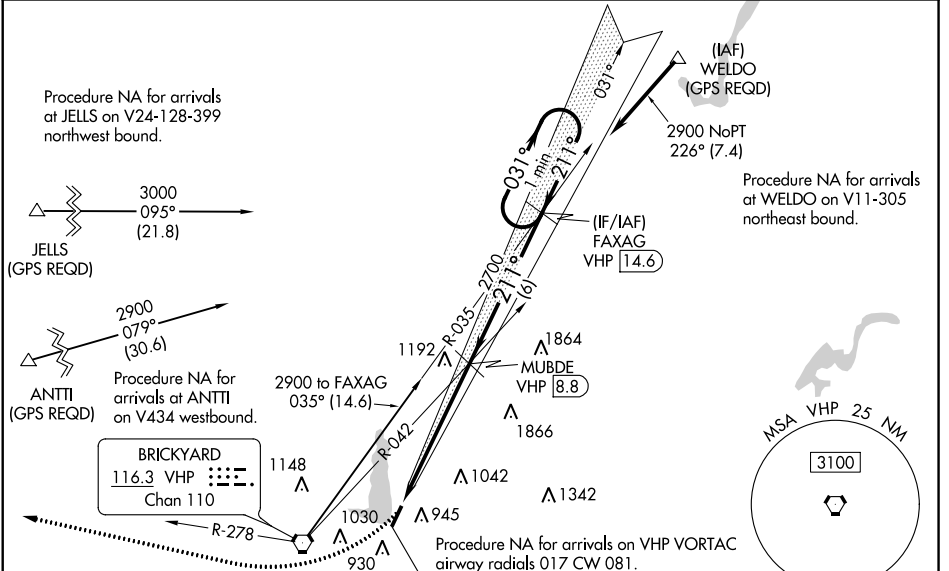
LOC I-EYE <b>111.5</b>	APP CRS <b>211°</b>	Rwy Idg <b>4200</b>
		TDZE <b>823</b>
		Apt Elev <b>823</b>

**NA** Helicopter visibility reduction below  $\frac{3}{4}$  SM NA. When local altimeter setting not received, use Indianapolis Intl altimeter setting and increase all MDA 20 feet. DME required. For inoperative MALs, increase Cat C visibility to  $1\frac{1}{2}$  mile.

**MALS**

**MISSED APPROACH:** Climbing right turn to 2900 on heading 270° and VHP R-278 to ANTTI INT/VHP 21.1 DME and hold.

ASOS <b>121.575</b>	INDIANAPOLIS APP CON <b>119.05 317.8</b>	CLNC DEL <b>128.6</b>	UNICOM <b>122.8 (CTAF) 0</b>
------------------------	---------------------------------------------	--------------------------	---------------------------------



CATEGORY	A	B	C	D
S-21	1340- $\frac{3}{4}$	517 (600- $\frac{3}{4}$ )	1340- $1\frac{1}{4}$ 517 (600- $1\frac{1}{4}$ )	NA
<b>C</b> CIRCLING	1340-1	517 (600-1)	1500-2 677 (700-2)	NA

EC-2: 29 MAR 2018 to 26 APR 2018

EC-2: 29 MAR 2018 to 26 APR 2018

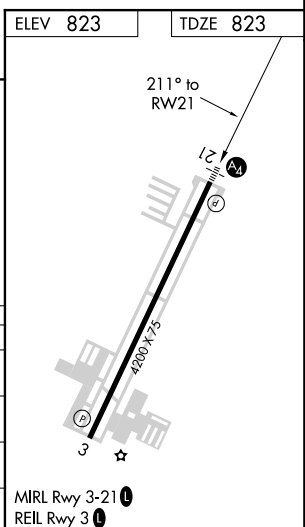
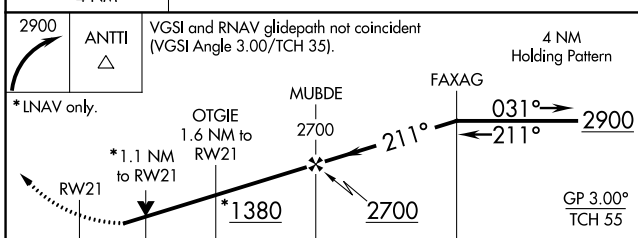
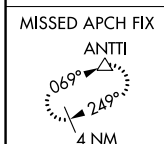
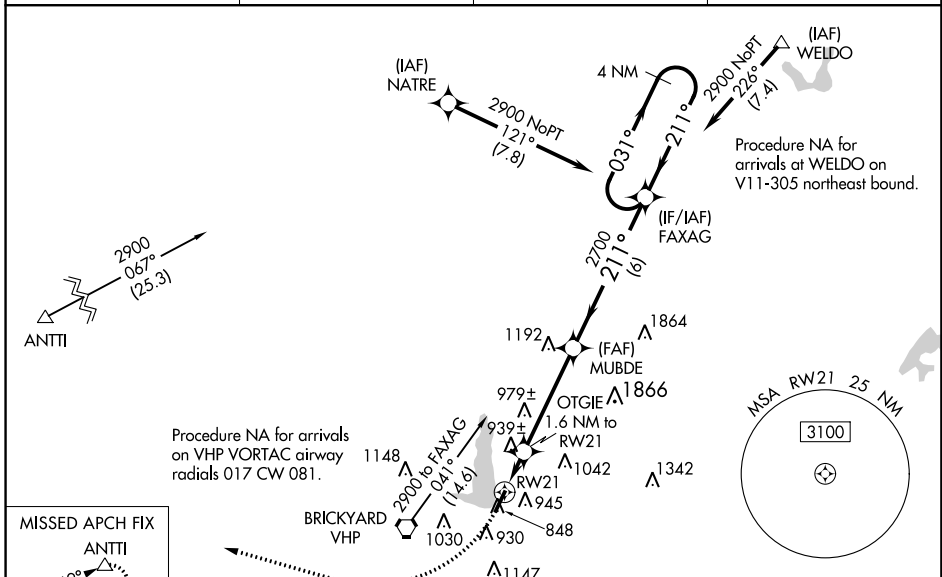
WAAS CH <b>82509</b> <b>W21A</b>	APP CRS <b>211°</b>	Rwy Idg TDZE Apr Elev	<b>4200</b> <b>823</b> <b>823</b>
----------------------------------------	------------------------	-----------------------------	-----------------------------------------

# RNAV (GPS) RWY 21

EAGLE CREEK AIRPARK (EYE)

<p><b>⚠</b> For uncompensated Baro-VNAV systems, LNAV/VNAV NA below 0°C (32°F) or above 54°C (130°F). DME/DME RNP-0.3 NA. For inoperative MAL S, increase LPV visibility all Cats to 7/8 mile. Inoperative table does not apply to LNAV/VNAV. Helicopter visibility reduction below 3/4 SM NA.</p>	<p>MALS</p>	<p>MISSED APPROACH: Climbing right turn to 2900 direct ANTTI and hold.</p>
	<p><b>⚠</b></p>	

ASOS <b>121.575</b>	INDIANAPOLIS APP CON <b>119.05 317.8</b>	CLNC DEL <b>128.6</b>	UNICOM <b>122.8 (CTAF)</b>
------------------------	---------------------------------------------	--------------------------	-------------------------------



CATEGORY	A	B	C	D
LPV DA	1091-3/4	268 (300-3/4)		NA
LNAV/VNAV DA	1076-3/4	253 (300-3/4)		NA
LNAV MDA	1200-3/4	377 (400-3/4)		NA
<b>C</b> CIRCLING	1300-1	477 (500-1)	1500-2 677 (700-2)	NA

EC-2, 29 MAR 2018 to 26 APR 2018

EC-2, 29 MAR 2018 to 26 APR 2018

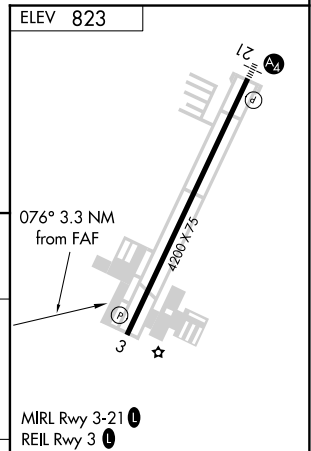
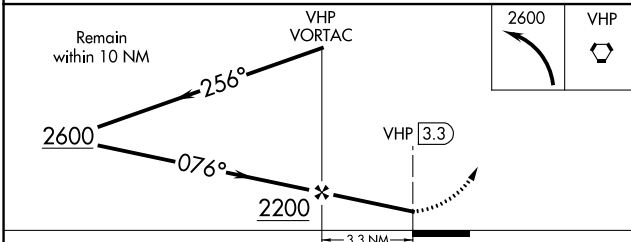
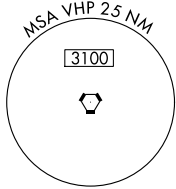
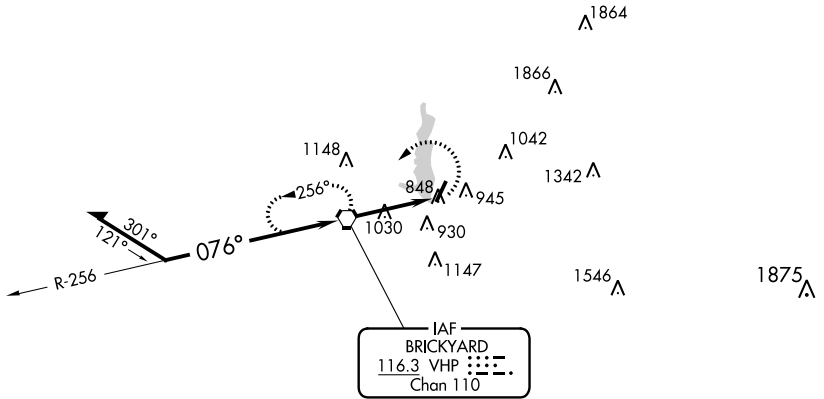
VORTAC VHP <b>116.3</b> Chan <b>110</b>	APP CRS <b>076°</b>	Rwy Idg TDZE Apt Elev <b>N/A</b> <b>N/A</b> <b>823</b>
-----------------------------------------------	------------------------	-----------------------------------------------------------------------

**VOR-A**  
EAGLE CREEK AIRPARK (EYE)

When local altimeter setting not received, use Indianapolis Intl altimeter setting and increase all MDA 20 feet.

MISSED APPROACH: Climbing left turn to 2600 direct VHP VORTAC and hold.

ASOS <b>121.575</b>	INDIANAPOLIS APP CON <b>119.05 317.8</b>	CLNC DEL <b>128.6</b>	UNICOM <b>122.8 (CTAF)</b>
------------------------	---------------------------------------------	--------------------------	-------------------------------



CATEGORY	A	B	C	D	FAF to MAP 3.3 NM					
CIRCLING	1300-1	477 (500-1)	1300-1½ 477 (500-1½)	NA	Knots	60	90	120	150	180
					Min:Sec	3:18	2:12	1:39	1:19	1:06

EC-2: 29 MAR 2018 to 26 APR 2018

EC-2: 29 MAR 2018 to 26 APR 2018