

**WIPOR THREE ARRIVAL (RNAV)**  
 (WIPOR.WIPOR3) 13NOV14

NEW BEDFORD RGNL  
 ATIS 126.85  
 THEODORE FRANCIS GREEN STATE  
 D-ATIS 124.2  
 PROVIDENCE APP CON ★  
 123.675 244.875

**ALBANY TRANSITION (ALB.WIPOR3):**  
**HANCOCK TRANSITION (HNK.WIPOR3):**  
**HINGZ TRANSITION (HINGZ.WIPOR3):**

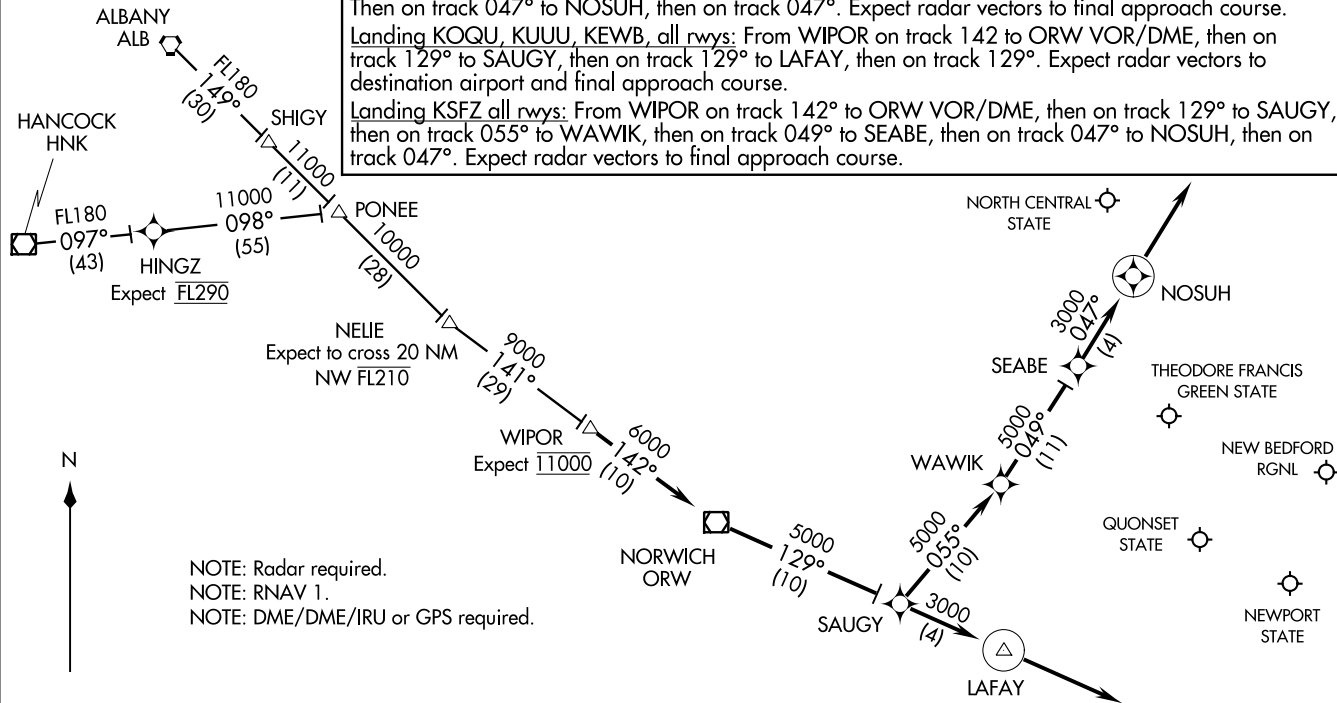
**ARRIVAL ROUTE DESCRIPTION**

From WIPOR on track 142° to ORW VOR/DME, then on track 129° to SAUGY.  
 Landing KPYD Rwy's 5, 34: From SAUGY on track 129° to LAFAY, then on track 129°.  
 Expect radar vectors to final approach course.  
 Landing KPYD Rwy's 16, 23: From SAUGY on track 055° to WAWIK, then on track 049° to SEABE.  
 Then on track 047° to NOSUH, then on track 047°. Expect radar vectors to final approach course.  
 Landing KOQU, KUUU, KEWB, all rwy's: From WIPOR on track 142° to ORW VOR/DME, then on track 129° to SAUGY, then on track 129° to LAFAY, then on track 129°. Expect radar vectors to destination airport and final approach course.  
 Landing KSFZ all rwy's: From WIPOR on track 142° to ORW VOR/DME, then on track 129° to SAUGY, then on track 055° to WAWIK, then on track 049° to SEABE, then on track 047° to NOSUH, then on track 047°. Expect radar vectors to final approach course.

**WIPOR THREE ARRIVAL (RNAV)**  
 (WIPOR.WIPOR3) 17173

AL-333 (FAA)

PROVIDENCE, RHODE ISLAND



NOTE: Radar required.  
 NOTE: RNAV 1.  
 NOTE: DME/DME/IRU or GPS required.

NOTE: Chart not to scale.

PROVIDENCE, RHODE ISLAND