

WAAS CH <b>77909</b>	APP CRS <b>W27A</b> 269°	Rwy Idg TDZE Apt Elev	<b>5503</b> <b>387</b> <b>387</b>
-------------------------	--------------------------------	-----------------------------	---

# RNAV (GPS) RWY 27

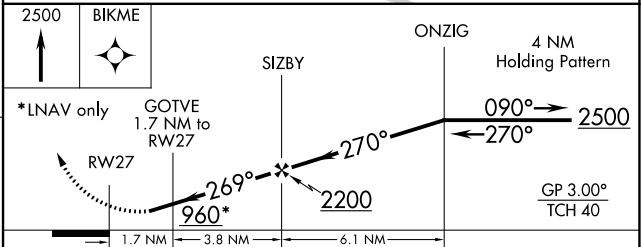
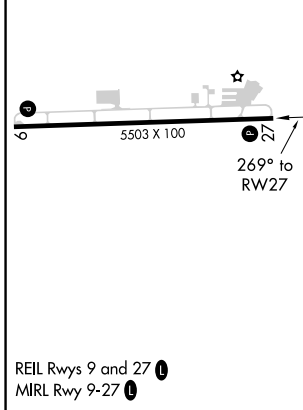
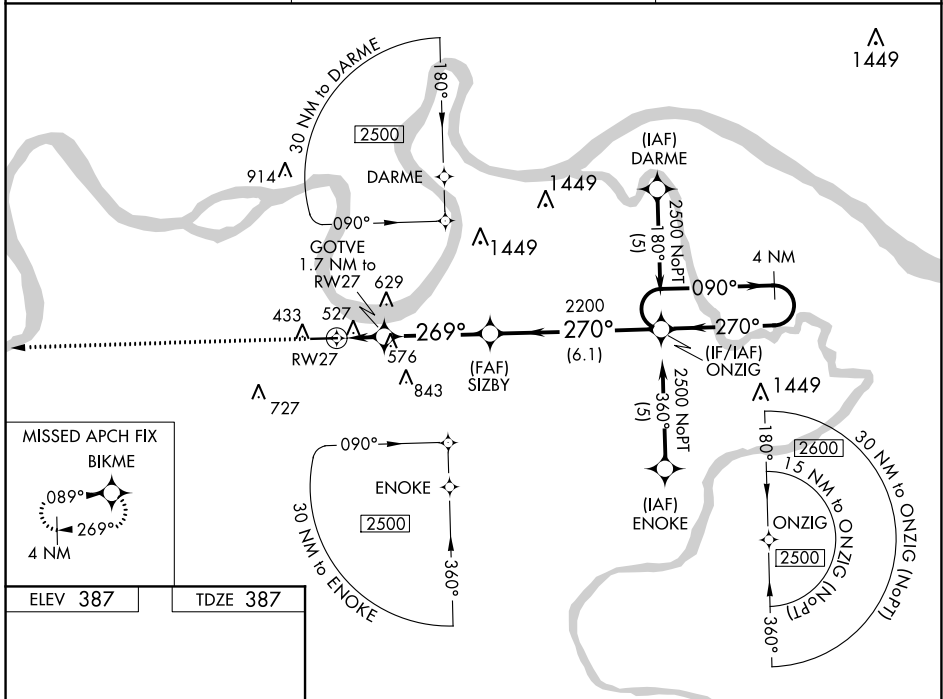
HENDERSON CITY-COUNTY (E.H.R.)

RNP APCH.

Baro-VNAV NA when using Evansville altimeter setting. For uncompensated Baro-VNAV systems, LNAV/VNAV NA below -15°C or above 48°C. Rwy 27 helicopter visibility reduction below ¾ SM NA. When local altimeter setting not received, use Evansville altimeter setting and increase all DA 41 feet and all MDA 60 feet and LPV all Cats, LNAV/VNAV all Cats and LNAV Cats C/D visibilities ¼ mile.

MISSED APPROACH: Climb to 2500 direct BIKME and hold.

AWOS-3PT <b>118.85</b>	EVANSVILLE APP CON ★ <b>124.025 257.8</b>	UNICOM <b>122.8</b> (CTAF) 0
---------------------------	--	---------------------------------



CATEGORY	A	B	C	D
LPV DA	733-1¼		346 (400-1¼)	
LNAV/VNAV DA	827-1½		440 (500-1½)	
LNAV MDA	840-1	453 (500-1)	840-1⅜ 453 (500-1⅜)	840-1½ 453 (500-1½)

SE-1, 22 APR 2021 to 20 MAY 2021

SE-1, 22 APR 2021 to 20 MAY 2021

# RNAV (GPS) RWY 9

HENDERSON CITY-COUNTY (E.H.R.)

WAAS CH <b>97709</b> W09A	APP CRS <b>089°</b>	Rwy Idg TDZE Apt Elev	<b>5503</b> <b>385</b> <b>387</b>
---------------------------------	------------------------	-----------------------------	---

RNP APCH.

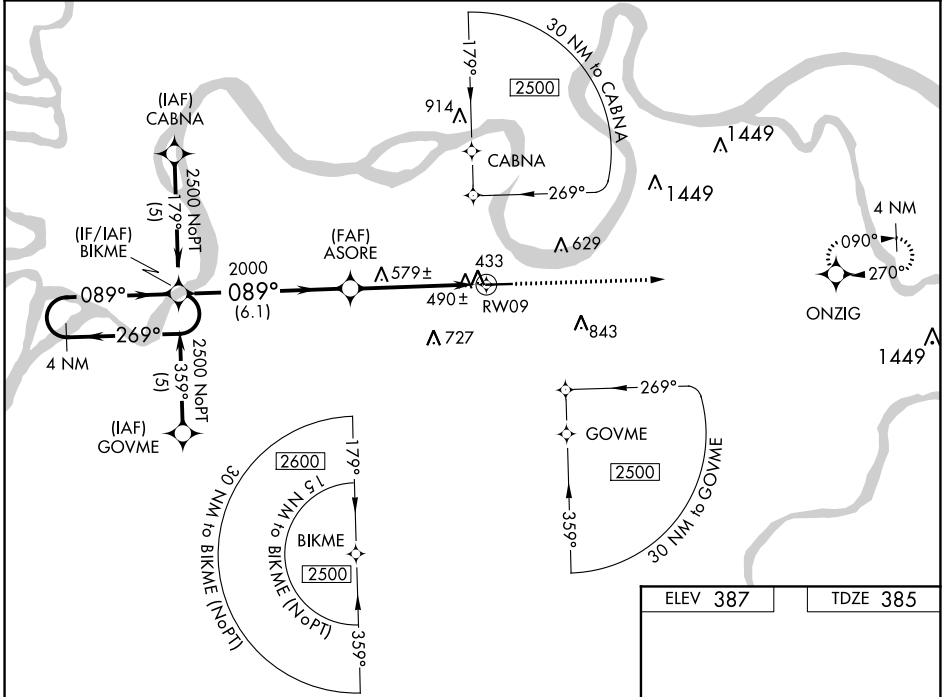
**⚠** For uncompensated Baro-VNAV systems, LNAV/VNAV NA below -15°C or above 48° C.  
**⚠** Rwy 9 helicopter visibility reduction below 3/4 SM NA. Baro-VNAV and VDP NA when using Evansville altimeter setting. When local altimeter setting not received, use Evansville climeter setting and increase all DA 41 feet and all MDA 60 feet and LPV all Cats, LNAV/VNAV all Cats and LNAV Cats C/D visibilities 1/4 mile.

MISSED APPROACH:  
Climb to 2500 direct  
ONZIG and hold.

AWOS-3PT  
**118.85**

EVANSVILLE APP CON \*  
**124.025 257.8**

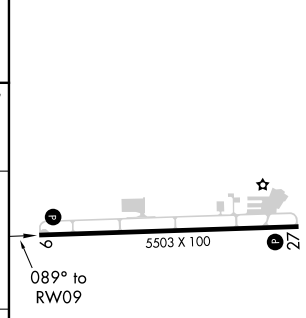
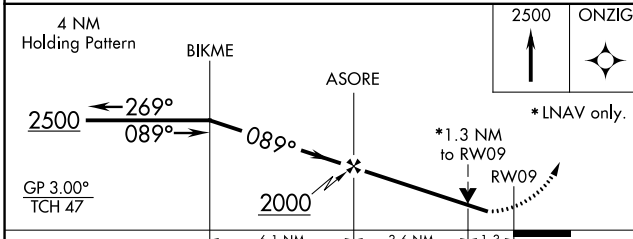
UNICOM  
**122.8** (CTAF) **0**



SE-1, 22 APR 2021 to 20 MAY 2021

SE-1, 22 APR 2021 to 20 MAY 2021

ELEV 387	TDZE 385
----------	----------



CATEGORY	A	B	C	D
LPV DA	694-1 309 (400-1)			
LNAV/VNAV DA	774-1 1/4 389 (400-1 1/4)			
LNAV MDA	840-1 455 (500-1)	840-1 3/8 455 (500-1 3/8)		840-1 1/2 455 (500-1 1/2)

REIL Rwy 9 and 27 **0**  
MIRL Rwy 9-27 **0**

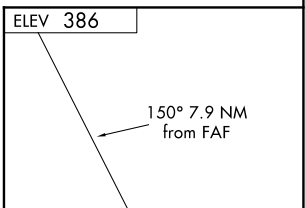
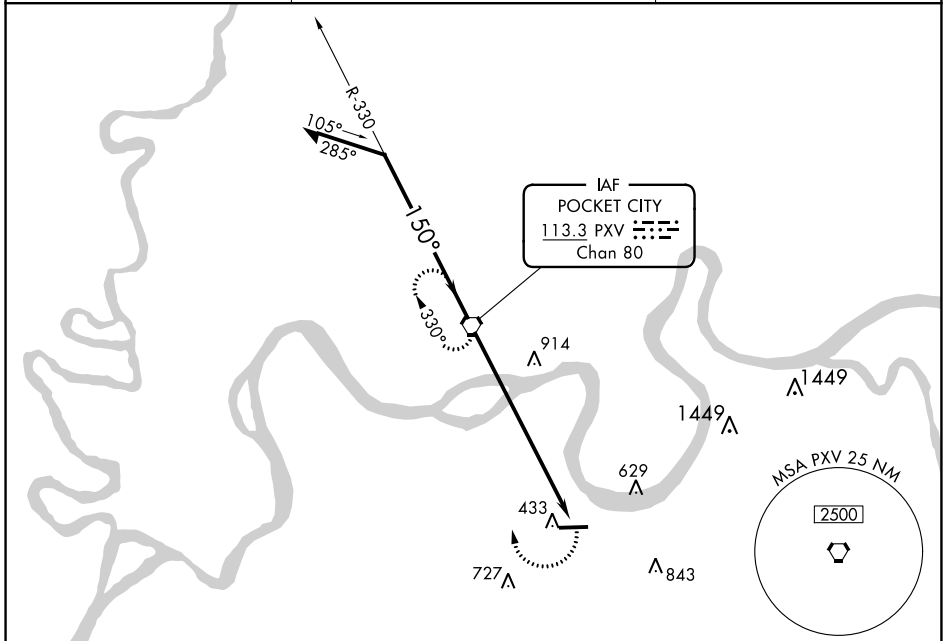
VORTAC PXV <b>113.3</b> Chan <b>80</b>	APP CRS <b>150°</b>	Rwy Idg TDZE Apt Elev	<b>N/A</b> <b>N/A</b> <b>386</b>
--	------------------------	-----------------------------	--

**VOR-A**

HENDERSON CITY-COUNTY (E.H.R.)

**▲** NA If local altimeter setting not received, use Evansville altimeter setting and increase all MDA's 80 feet. MISSED APPROACH: Climbing right turn to 2100 direct PXV VORTAC and hold.

AWOS-3PT <b>118.85</b>	EVANSVILLE APP CON ★ <b>124.025 257.8</b>	UNICOM <b>122.8</b> (CTAF) <b>0</b>
---------------------------	--	--



CATEGORY	A	B	C	D	FAF to MAP 7.9 NM					
	920-1 534 (600-1)		920-1½ 534 (600-1½)	940-2 554 (600-2)	Knots	60	90	120	150	180
CIRCLING					Min:Seq	7:54	5:16	3:57	3:10	2:38

HENDERSON, KENTUCKY	HENDERSON CITY-COUNTY (E.H.R.)
Amdt 10 23JAN03	<b>VOR-A</b>

SE-1, 22 APR 2021 to 20 MAY 2021

SE-1, 22 APR 2021 to 20 MAY 2021