

BEVVR ONE DEPARTURE (RNAV)
(BEVVR1.BEVVR) 19JUL18

EAGLE COUNTY RGNL (EGTE)
EAGLE COUNTY RGNL (EGTE)

DEPARTURE ROUTE DESCRIPTION

TAKEOFF RUNWAY 25: Begin a climbing left turn as soon as practicable but no later than DER heading 206° to 7100, then direct COPER, then on depicted route to cross APRES at or above 13100, thence. . . .

. . . .on (assigned) transition, maintain 15000. Expect filed altitude 10 minutes after departure.

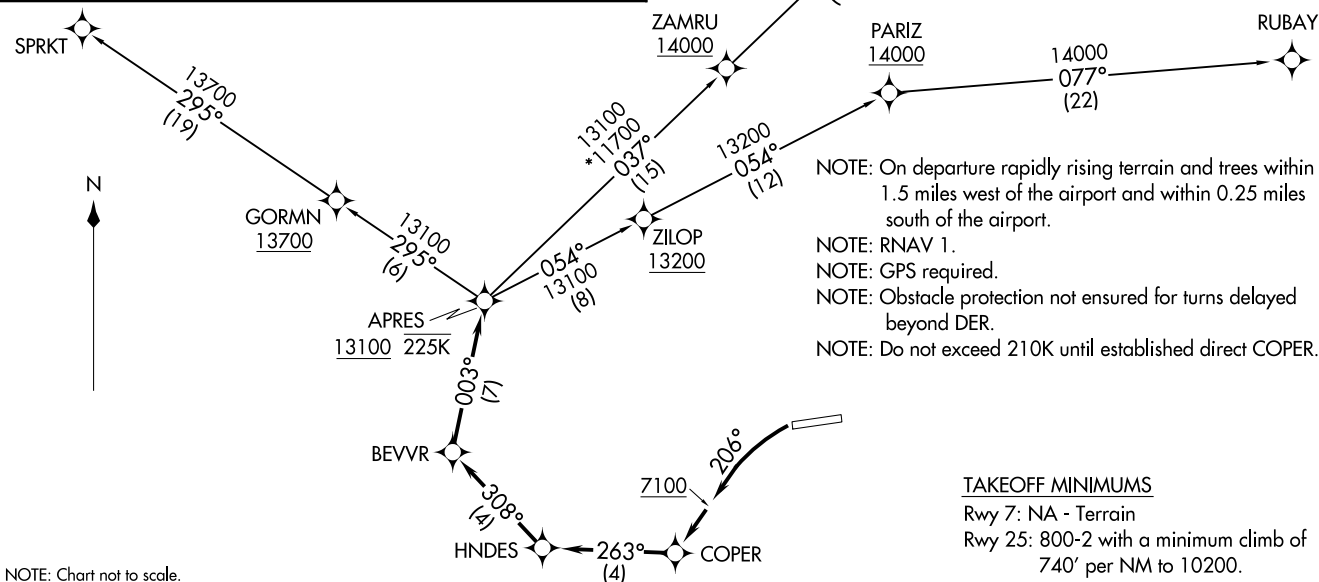
BELGN TRANSITION (BEVVR1.BELGN)

RUBAY TRANSITION (BEVVR1.RUBAY)

SPRKT TRANSITION (BEVVR1.SPRKT)

ATIS
135.575
CLNC DEL
124.75
DENVER CLNC DEL
124.75
(When tower closed)
GND CON
121.8
EAGLE TOWER*
119.8
DENVER CENTER
128.65 282.2

**TOP ALTITUDE:
15000**

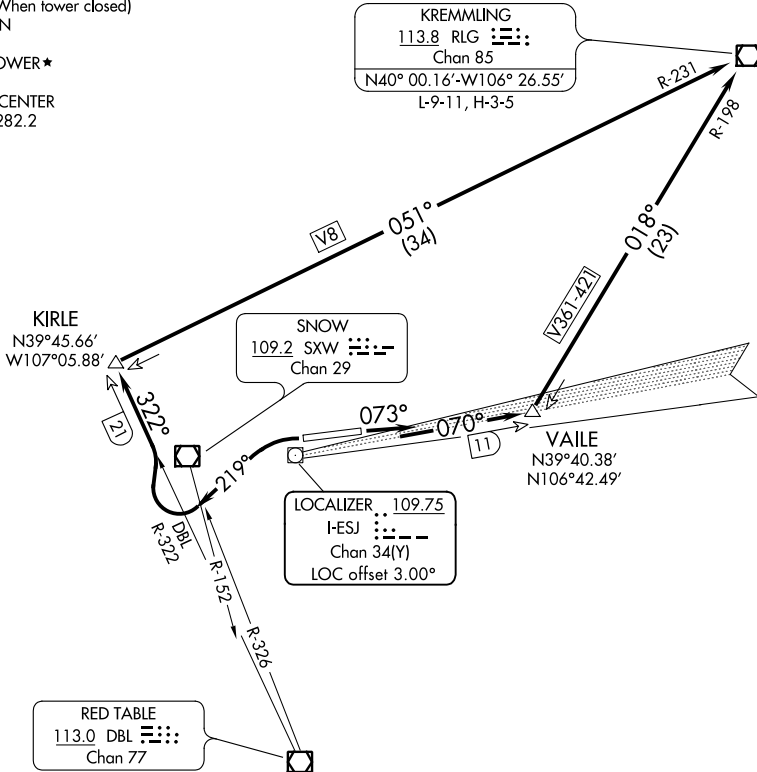


(BEVVR1.BEVVR) 18312
BEVVR ONE DEPARTURE (RNAV)

AL-6403 (FAA)

EAGLE COUNTY RGNL (EGTE)
EAGLE COUNTY RGNL (EGTE)

ATIS
 135.575
 CLNC DEL
 124.75
 DENVER CLNC DEL
 124.75 (When tower closed)
 GND CON
 121.8
 EAGLE TOWER ★
 119.8
 DENVER CENTER
 128.65 282.2



SW-1, 05 NOV 2020 to 03 DEC 2020

SW-1, 05 NOV 2020 to 03 DEC 2020

TAKEOFF MINIMUMS

Rwy 7: Standard with minimum climb of 580' per NM to 12000.
 Rwy 25: Standard with minimum climb of 815' per NM to 9200.

NOTE: Chart not to scale.



DEPARTURE ROUTE DESCRIPTION

TAKEOFF RUNWAY 7: Climb heading 073° and I-ESJ east course to VAILE INT/ESJ 11 DME then left turn on RLG R-198 to RLG VOR/DME.

TAKEOFF RUNWAY 25: Climbing left turn heading 219°, until crossing SXW R-152 or DBL R-326, then turn right on DBL R-322 to KIRLE INT/DBL 21 DME then turn right on RLG R-231 to RLG VOR/DME.

(EKR3.EKR) 18200


MEEKER THREE DEPARTURE

AL-6403 (FAA)


EAGLE COUNTY RGNL (E/G/E)
EAGLE, COLORADO


**TOP ALTITUDE:
15000**

ATIS 135.575
 CLNC DEL 124.75
 DENVER CLNC DEL 124.75
 124.75 (When tower closed)
 GND CON 121.8
 EAGLE TOWER* 119.8
 DENVER CENTER 128.65 282.2

R-097
 MEEKER
 115.2 EKR 
 Chan 99
 N40°04.05'-W107°55.50'
 L-9-11, H-3

MELVL
 N39°48.83'
 W107°07.90'
 15000

SNOW
 109.2 SXW 
 Chan 29

RED TABLE
 113.0 DBL 
 Chan 77

SW-1, 05 NOV 2020 to 03 DEC 2020

SW-1, 05 NOV 2020 to 03 DEC 2020

TAKEOFF MINIMUMS

Rwy 7: NA - ATC

Rwy 25: Standard with minimum climb of 815' per NM to 15000.

NOTE: Chart not to scale.



DEPARTURE ROUTE DESCRIPTION

TAKEOFF RUNWAY 25: Climbing left turn heading 219°, upon crossing SXW R-152 or DBL R-326 turn right via DBL R-322 to MELVL INT/DBL 25 DME then turn left via EKR R-097 to EKR VOR/DME. Cross MELVL at or above 15000, expect filed altitude 10 minutes after departure.

MEEKER THREE DEPARTURE

(EKR3.EKR) 19JUL18

EAGLE, COLORADO
EAGLE COUNTY RGNL (E/G/E)