

|  |                        |   |
|--|------------------------|---|
| LOC/DME I-EDE<br><b>110.95</b><br>Chan <b>46 (Y)</b> | APP CRS<br><b>190°</b> | Rwy Idg <b>6000</b><br>TDZE <b>20</b><br>Apt Elev <b>20</b> |
|--|------------------------|---|

# ILS or LOC RWY 19

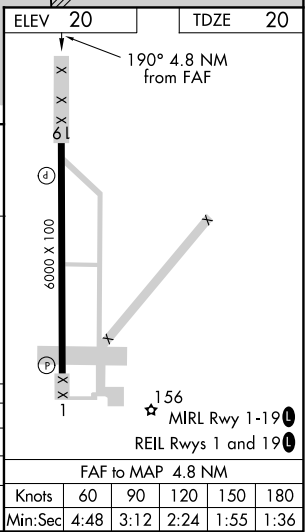
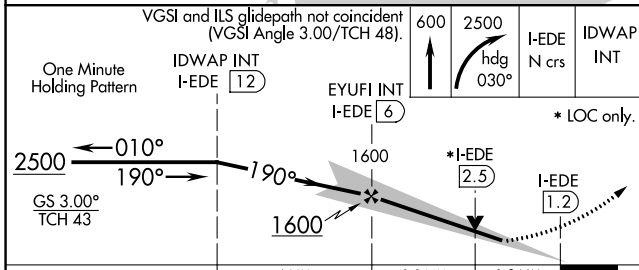
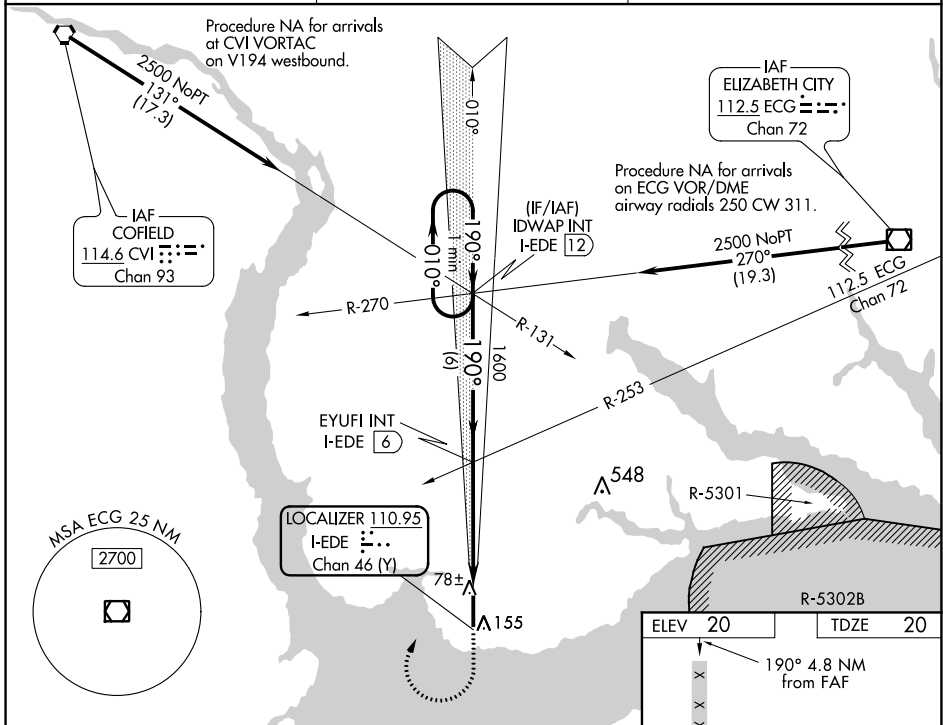
NORTHEASTERN RGNL (E/D/E)

DME or RADAR required for procedure entry.

▼ When local altimeter setting not received, use Elizabeth City altimeter setting and increase all DA 56 feet and all MDA 60 feet and increase S-ILS 19 all Cats and S-LOC 19 Cats C/D visibility 1/8 mile. VDP NA when using Elizabeth City altimeter setting.

MISSED APPROACH: Climb to 600 then climbing right turn to 2500 on heading 030° and I-EDE localizer N course to IDWAP INT/I-EDE 12 DME and hold.

|                          |   |                                 |
|--------------------------|---|---------------------------------|
| AWOS-3<br><b>118.275</b> | WASHINGTON CENTER<br><b>123.85 279.65</b> | UNICOM<br><b>123.0 (CTAF) 0</b> |
|--------------------------|---|---------------------------------|



| CATEGORY | A     | B           | C             | D                    |
|----------|-------|-------------|---------------|----------------------|
| S-ILS 19 |       | 220-3/4     | 200 (200-3/4) |                      |
| S-LOC 19 | 480-1 | 460 (500-1) | 480-1 3/8     | 460 (500-1 3/8)      |
| CIRCLING | 520-1 | 500 (500-1) | 520-1 1/2     | 580-2<br>560 (600-2) |

|                   |      |      |      |      |      |
|-------------------|------|------|------|------|------|
| FAF to MAP 4.8 NM |      |      |      |      |      |
| Knots             | 60   | 90   | 120  | 150  | 180  |
| Min:Sec           | 4:48 | 3:12 | 2:24 | 1:55 | 1:36 |

SE-2, 25 FEB 2021 to 25 MAR 2021

SE-2, 25 FEB 2021 to 25 MAR 2021

|             |          |             |
|-------------|----------|-------------|
| APP CRS     | Rwy Idg  | <b>6000</b> |
| <b>025°</b> | TDZE     | <b>20</b>   |
|             | Apt Elev | <b>20</b>   |

# RNAV (GPS) RWY 1

NORTHEASTERN RGNL (EDE)

RNP APCH.

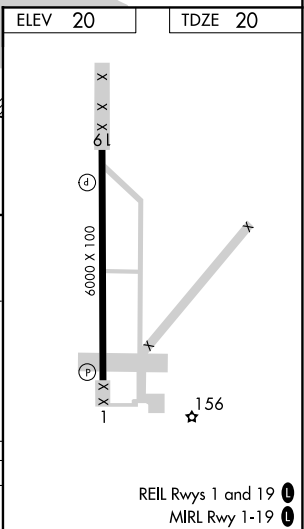
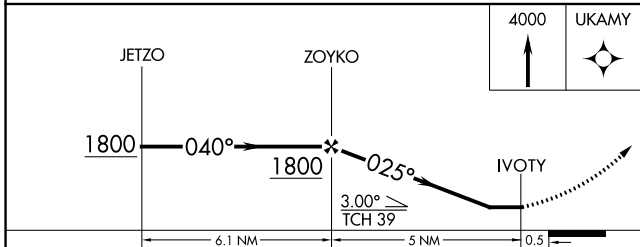
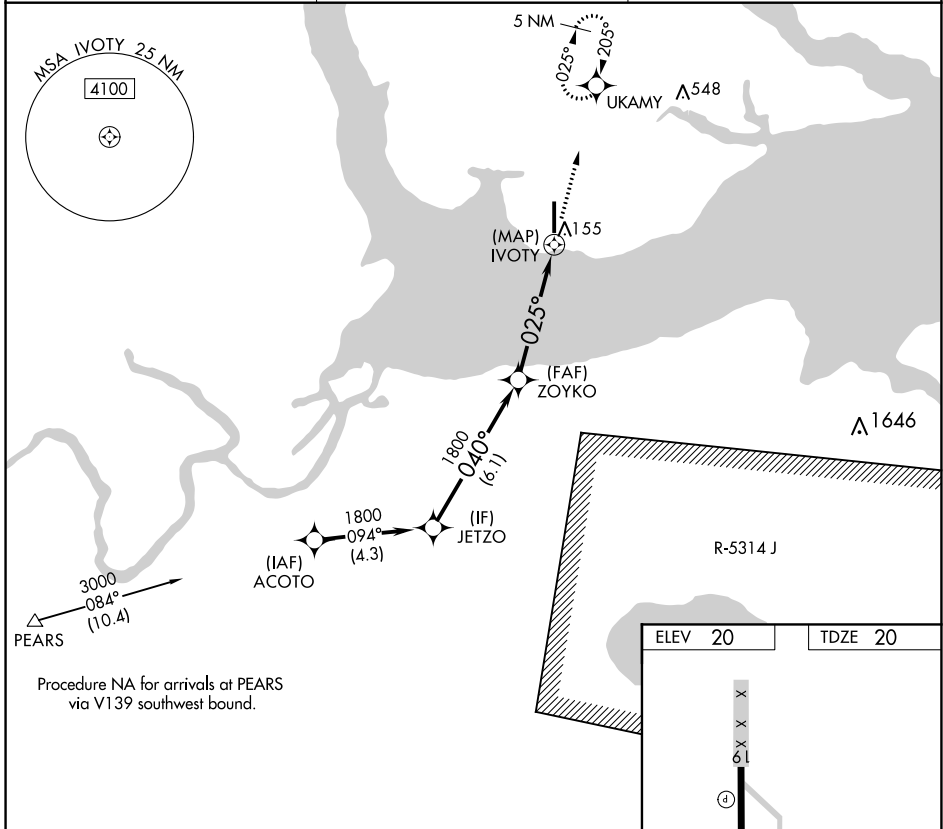
**▼** If local altimeter setting not received, use Elizabeth City altimeter setting and increase all MDAs 60 feet.  
**▲** Rwy 1 helicopter visibility reduction below 3/4 SM NA.

MISSED APPROACH: Climb to 4000 direct UKAMY and hold, continue climb-in-hold to 4000.

AWOS-3  
**118.275**

WASHINGTON CENTER  
**123.85 279.65**

UNICOM  
**123.0 (CTAF) 0**



| CATEGORY | A     | B           | C                      | D                      |
|----------|-------|-------------|------------------------|------------------------|
| LNAV MDA | 460-1 | 440 (500-1) | 460-1½<br>440 (500-1½) | 460-1½<br>440 (500-1½) |

REIL Rwys 1 and 19 **0**  
MIRL Rwy 1-19 **0**

SE-2, 25 FEB 2021 to 25 MAR 2021

SE-2, 25 FEB 2021 to 25 MAR 2021

|  |                        |                             |                                       |
|--|------------------------|-----------------------------|---------------------------------------|
| WAAS<br>CH <b>90503</b><br><b>W19A</b> | APP CRS<br><b>190°</b> | Rwy Idg<br>TDZE<br>Apt Elev | <b>6000</b><br><b>20</b><br><b>20</b> |
|--|------------------------|-----------------------------|---------------------------------------|

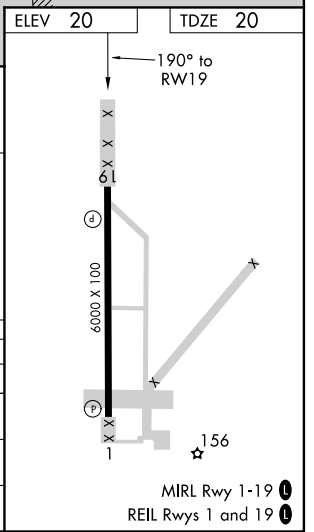
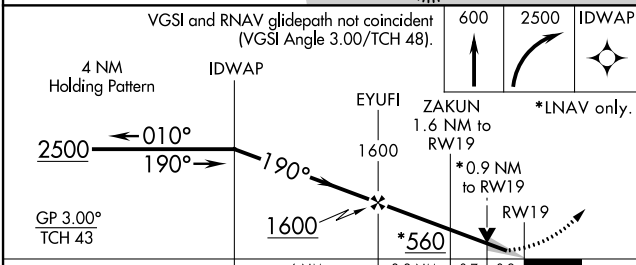
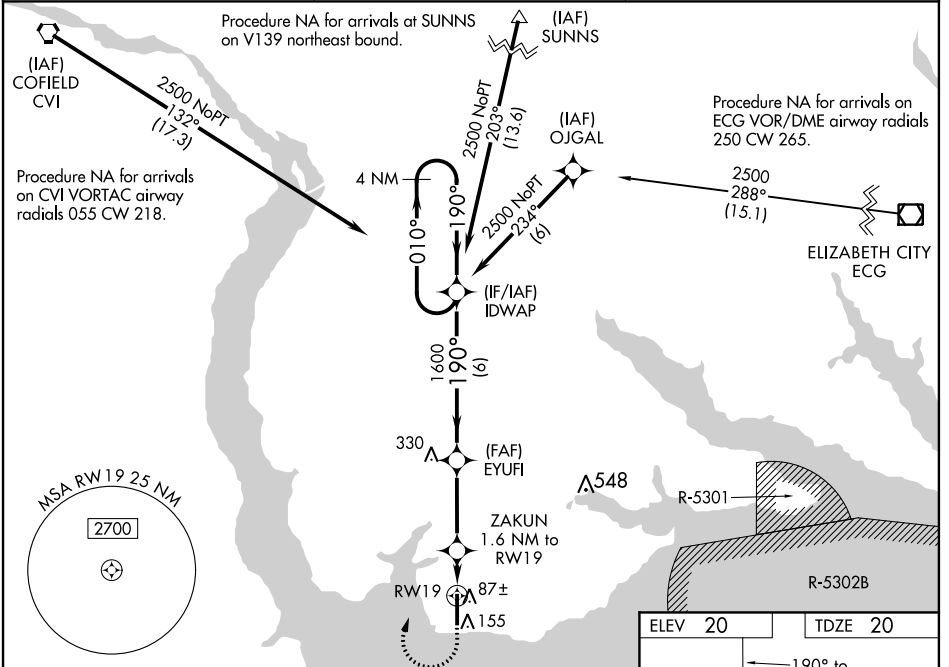
# RNAV (GPS) RWY 19

NORTHEASTERN RGNL (E/D/E)

**⚠** Baro-VNAV NA when using Elizabeth City altimeter setting. For uncompensated Baro-VNAV systems, LNAV/VNAV NA below -15°C (5°F) or above 43°C (109°F). When local altimeter setting not received, use Elizabeth City altimeter setting and increase LPV DA to 275 LNAV/VNAV DA to 325 and all MDA 60 feet, increase LPV all Cats and LNAV Cat C/D visibility 1/8 mile and LNAV/VNAV visibility all Cats 1/4 mile. DME/DME RNP-0.3 NA. VDP NA when using Elizabeth City altimeter setting.

**MISSED APPROACH:**  
Climb to 600 then right turn to 2500 direct IDWAP and hold.

|                          |   |                                 |
|--------------------------|---|---------------------------------|
| AWOS-3<br><b>118.275</b> | WASHINGTON CENTER<br><b>123.85 279.65</b> | UNICOM<br><b>123.0 (CTAF) 0</b> |
|--------------------------|---|---------------------------------|



| CATEGORY     | A     | B           | C                            | D                    |
|--------------|-------|-------------|------------------------------|----------------------|
| LPV DA       |       | 220-3/4     | 200 (200-3/4)                |                      |
| LNAV/VNAV DA |       | 270-3/4     | 250 (300-3/4)                |                      |
| LNAV MDA     |       | 340-1       | 320 (400-1)                  |                      |
| CIRCLING     | 520-1 | 500 (500-1) | 520-1 1/2<br>500 (500-1 1/2) | 580-2<br>560 (600-2) |

SE-2, 25 FEB 2021 to 25 MAR 2021

SE-2, 25 FEB 2021 to 25 MAR 2021