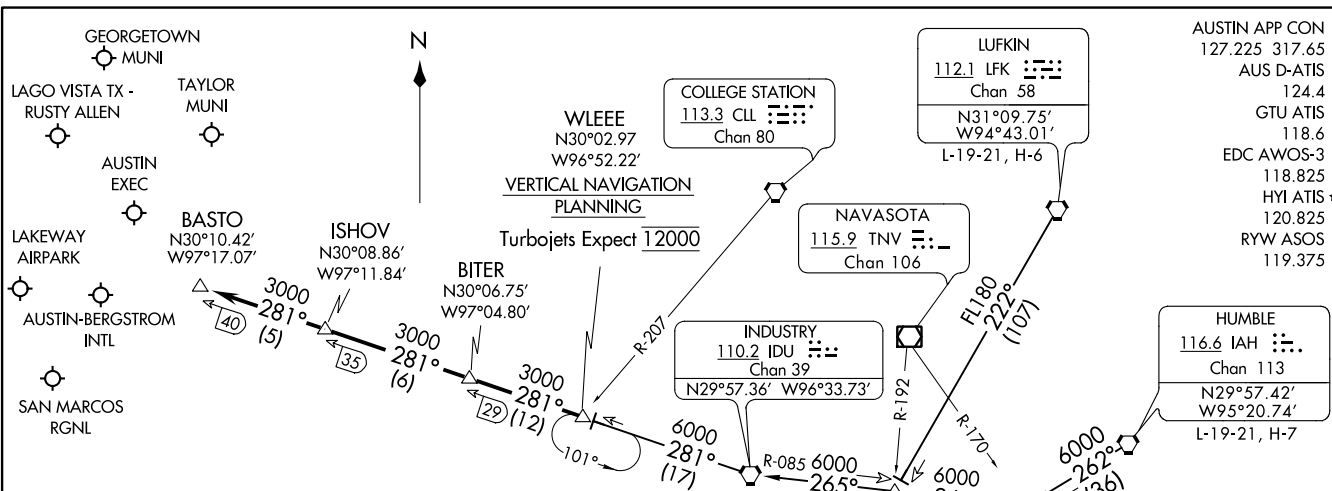


BITER NINE ARRIVAL
(WLEEE.BITER9) 25APR19



- AUSTIN APP CON 127.225 317.65
- AUS D-ATIS 124.4
- GTU ATIS 118.6
- EDC AWOS-3 118.825
- HYI ATIS ★ 120.825
- RYW ASOS 119.375

ARRIVAL ROUTE DESCRIPTION

HUMBLE TRANSITION (IAH.BITER9): From over IAH VORTAC on IAH R-262 to SHYNR INT, then on IDU R-085 to IDU VORTAC, then on IDU R-281 to WLEEE INT. Thence

INDUSTRY TRANSITION (IDU.BITER9): From over IDU VORTAC on IDU R-281 to WLEEE INT. Thence

LUFKIN TRANSITION (LFK.BITER9): From over LFK VORTAC on LFK R-222 to BOCK INT, then on IDU R-085 to IDU VORTAC, then on IDU R-281 to WLEEE INT. Thence

. . . . From over WLEEE on IDU R-281 to BITER, then on IDU R-281 to ISHOV, then on IDU R-281 to BASTO. Expect vectors to final approach course at or prior to BASTO.

- NOTE: RADAR required.
- NOTE: DME required.
- NOTE: DME/DME/IRU or GPS equipped aircraft must file the WLEEE (RNAV) or POTRR (RNAV) STAR.

NOTE: Chart not to scale.

AUSTIN, TEXAS

(WLEEE.BITER9) 21168
BITER NINE ARRIVAL

AL-556 (FAA)

AUSTIN, TEXAS

BLEWE FOUR ARRIVAL

AUSTIN, TEXAS

AUSTIN APP CON
 127.225 317.65
 AUS D-ATIS
 124.4
 EDC AWOS-3
 118.825
 HYI ATIS ★
 120.825
 RYW ASOS
 119.375

WACO
 115.3 ACT
 Chan 100
 N31°39.74'-W97°16.14'
 L-19, H-6

MAVERICK
 113.1 TTT
 Chan 78
 L-17, H-6

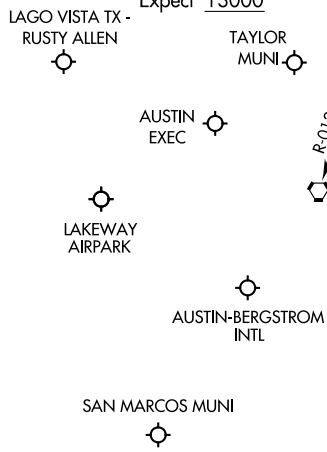
WINDU
 N31°31.83'
 W97°04.95'
 L-19, H-6-7

GOOCH SPRINGS
 112.5 AGJ
 Chan 72
 L-19, H-6

BLEWE
 N31°12.46'
 W97°12.54'

SEWZY
 N30°48.80'
 W97°21.74'
 VERTICAL NAVIGATION
 PLANNING
 Expect 13000

CENTEX
 112.8 CWK
 Chan 75
 N30°22.71'-W97°31.79'
 L-19-21, H-6



- NOTE: RADAR required.
- NOTE: DME required.
- NOTE: DME/DME/IRU or GPS equipped turbojet and turboprop aircraft must file the SEWZY (RNAV) or MSTLO (RNAV) STAR.

NOTE: Chart not to scale.

ARRIVAL ROUTE DESCRIPTION

WACO TRANSITION (ACT.BLEWE4): From over ACT VORTAC on ACT R-165 to BLEWE INT. Thence . . .

WINDU TRANSITION (WINDU.BLEWE4): From over WINDU INT on CWK R-012 to BLEWE INT. Thence . . .

. . . From over BLEWE on CWK R-012 to SEWZY, then on CWK R-012 to CWK VORTAC. Expect vectors to final approach course at or prior to CWK VORTAC.

SC-3, 12 AUG 2021 to 09 SEP 2021

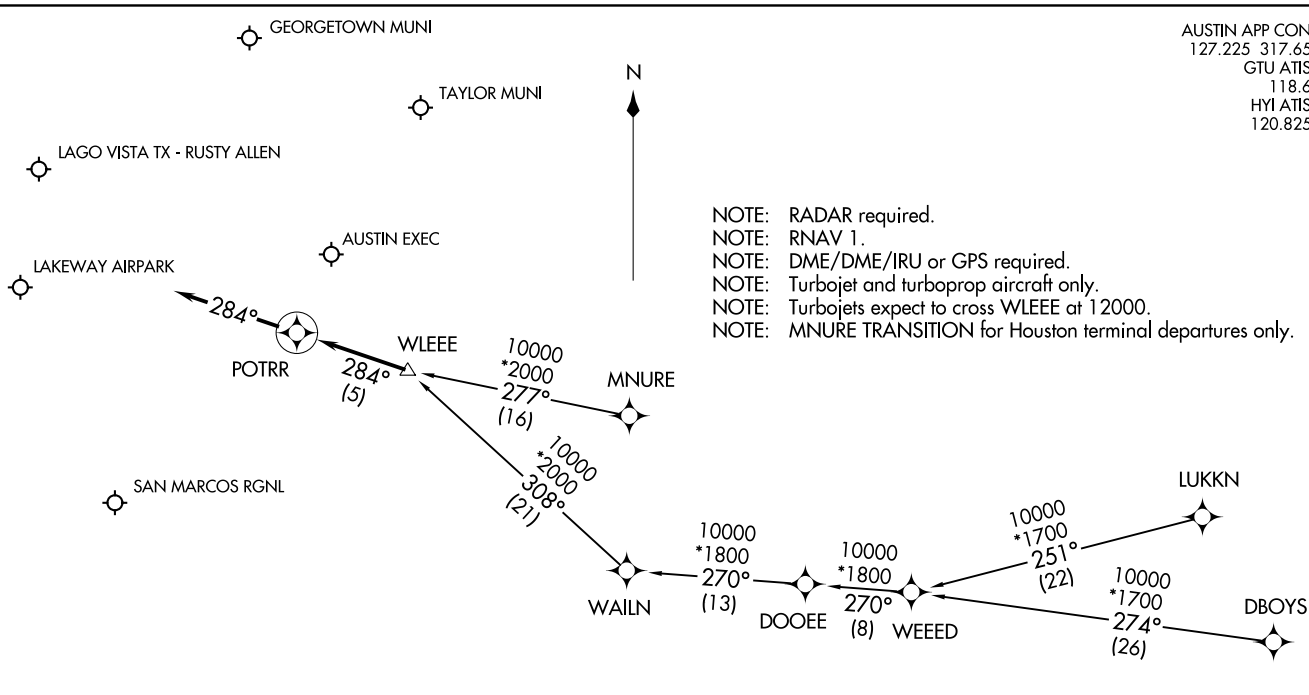
SC-3, 12 AUG 2021 to 09 SEP 2021

POTRR ONE ARRIVAL (RNAV)
(WLEEE.POTRR1) 07DEC17

(WLEEE.POTRR1) 21168
POTRR ONE ARRIVAL (RNAV)

AUSTIN APP CON
127.225 317.65
GTU ATIS
118.6
HYI ATIS★
120.825

- NOTE: RADAR required.
- NOTE: RNAV 1.
- NOTE: DME/DME/IRU or GPS required.
- NOTE: Turbojet and turboprop aircraft only.
- NOTE: Turbojets expect to cross WLEEE at 12000.
- NOTE: MNURE TRANSITION for Houston terminal departures only.



ARRIVAL ROUTE DESCRIPTION

- DBOYS TRANSITION (DBOYS.POTRR1)
- LUKKN TRANSITION (LUKKN.POTRR1)
- MNURE TRANSITION (MNURE.POTRR1)
- WEEED TRANSITION (WEEED.POTRR1)

LANDING ALL AIRPORTS: From WLEEE on track 284° to POTRR, then on track 284°. Expect RADAR vectors to final approach course.

AUSTIN, TEXAS

AUSTIN, TEXAS

AL-5891 (FAA)