

WAAS CH 63116 W13A	APP CRS 126°	Rwy Idg 5425 TDZE 620 Apt Elev 620
--	------------------------	---

RNAV (GPS) RWY 13

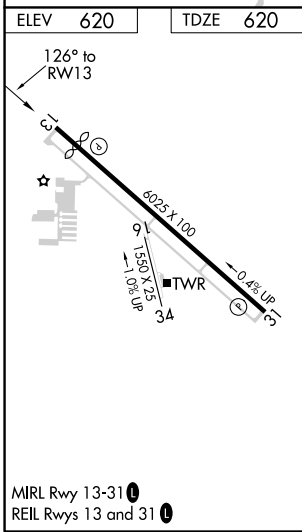
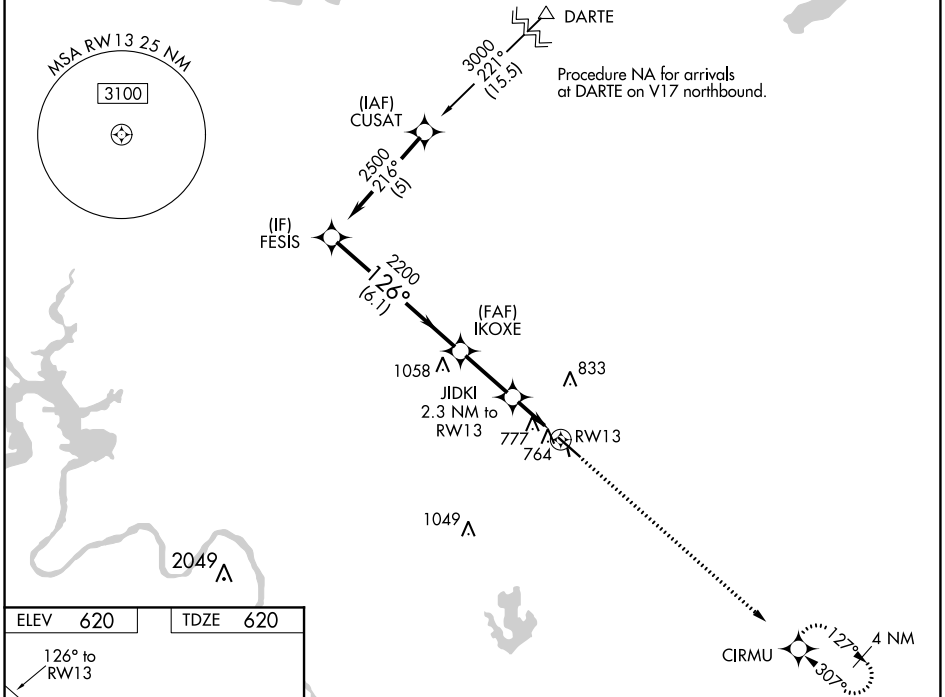
AUSTIN EXEC (EDC)

RNP APCH.

⚠ Baro-VNAV NA when using Austin-Bergstrom Intl altimeter setting. For uncompensated Baro-VNAV systems, LNAV/VNAV NA below -16°C (4°F) or above 47°C (116°F). Visibility reduction by helicopters NA. When local altimeter setting not received, use Austin-Bergstrom Intl altimeter setting: increase LPV DA to 912 feet, increase LNAV/VNAV DA to 1168 feet; increase all MDA 60 feet. VDP NA with Austin-Bergstrom Intl altimeter setting. Circling NA to Rwy 16 and 34.

MISSED APPROACH:
Climb to 2100 direct CIRMU and hold.

AWOS-3 118.825	AUSTIN APP CON 127.225 317.65	EXECUTIVE TOWER* 120.3 (CTAF) 0	GND CON 119.45	CLNC DEL 126.025 (When twr closed)	UNICOM 122.975
--------------------------	---	---	--------------------------	---	--------------------------



ELEV 620	TDZE 620			
<p>2100 CIRMU</p> <p>*LNAV only.</p>				
FESIS	IKOXE	JIDKI	RWY 13	
2500	2200	2.3 NM to RWY 13	*1.3 NM to RWY 13	
Procedure Turn NA				
GP 3.00°				
TCH 40				
<p>6.1 NM 2.5 NM 1 NM 1.3 NM</p>				
CATEGORY	A	B	C	D
LPV DA		870-1	250 (300-1)	
LNAV/VNAV DA		1126-1¾	506 (600-1¾)	
LNAV MDA	1080-1	460 (500-1)	1080-1⅓ 460 (500-1⅓)	1080-1½ 460 (500-1½)
C CIRCLING	1140-1 520 (600-1)	1160-1 540 (600-1)	1160-1½ 540 (600-1½)	1220-2 600 (600-2)

SC-3, 12 AUG 2021 to 09 SEP 2021

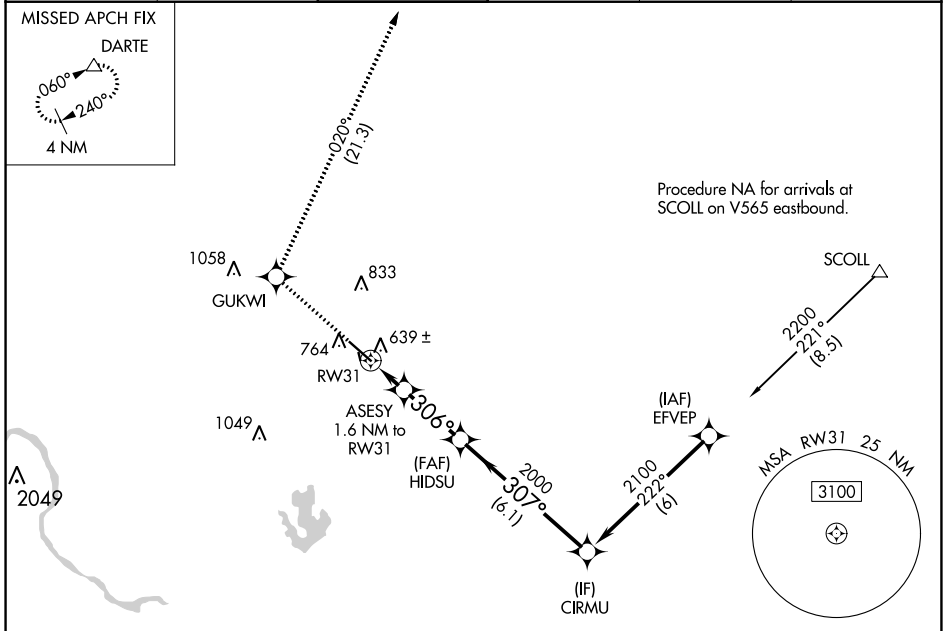
SC-3, 12 AUG 2021 to 09 SEP 2021

WAAS CH 45916 W31A	APP CRS 306°	Rwy Idg TDZE Apt Elev	6025 612 620
--	------------------------	-----------------------------	---

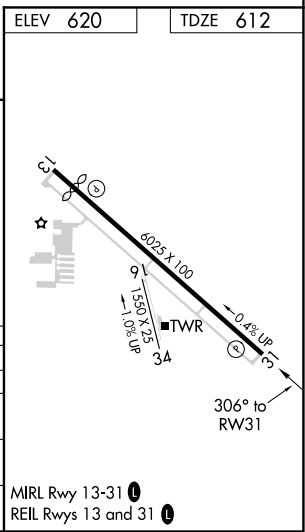
RNAV (GPS) RWY 31

AUSTIN EXEC (EDC)

RNP APCH.				MISSED APPROACH: Climb to 3500 direct GUKWI and on track 020° to DARTE and hold.	
<p>▼ Circling NA to Rwy 16 and 24. For uncompensated Baro-VNAV systems, LNAV/VNAV NA below -16°C or above 54°C.</p>					
AWOS-3 118.825	AUSTIN APP CON 127.225 317.65	EXECUTIVE TOWER★ 120.3 (CTAF) 0	GND CON 119.45	CLNC DEL 126.025 (when twr closed)	UNICOM 122.975



ELEV 620	TDZE 612			
3500	GUKWI	tr 020°	DARTE	CIRMU
*LNAV only.				
CATEGORY	A	B	C	D
LPV DA		812-3/4	200 (200-3/4)	
LNAV/VNAV DA		909-7/8	297 (300-7/8)	
LNAV MDA	900-1 288 (300-1)		900-7/8 288 (300-7/8)	
CIRCLING	1140-1 520 (600-1)	1160-1 540 (600-1)	1280-1 3/4 660 (700-1 3/4)	1280-2 660 (700-2)



SC-3, 12 AUG 2021 to 09 SEP 2021

SC-3, 12 AUG 2021 to 09 SEP 2021