

APP CRS <b>229°</b>	Rwy Idg TDZE Apt Elev	<b>3004</b> <b>394</b> <b>394</b>
------------------------	-----------------------------	---

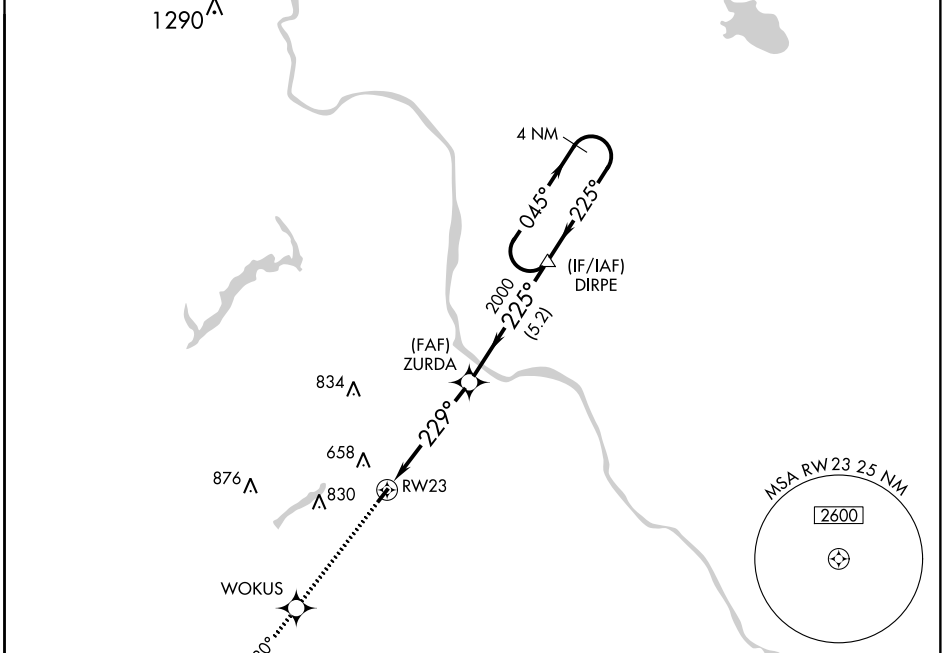
# RNAV (GPS) RWY 23

DOYLESTOWN (DYL)

**▽** DME/DME RNP-0.3 NA. When local altimeter setting not received, use Trenton altimeter setting and increase all MDA 60 feet. Rwy 23: helicopter visibility reduction below 1 SM NA.

**▲** MISSED APPROACH: Climb to 3000 direct WOKUS and via track 230° to AWISA and hold.

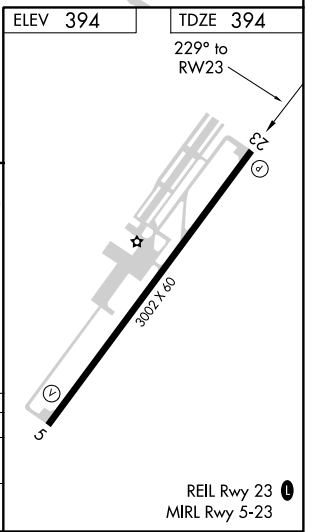
ASOS <b>118.875</b>	PHILADELPHIA APP CON <b>123.8 291.7</b>	CLNC DEL <b>118.55</b>	UNICOM <b>122.975 (CTAF) 0</b>
------------------------	--	---------------------------	-----------------------------------



NE-4, 03 DEC 2020 to 31 DEC 2020

NE-4, 03 DEC 2020 to 31 DEC 2020

3000	WOKUS	fr 230°	AWISA	VGSI and descent angles not coincident (VGSI Angle 3.00/TCH 20).	4 NM Holding Pattern
CATEGORY	A	B	C	D	
LNVA MDA	1040-1	646 (700-1)		NA	
CIRCLING	1040-1	646 (700-1)		NA	



# RNAV (GPS) RWY 5

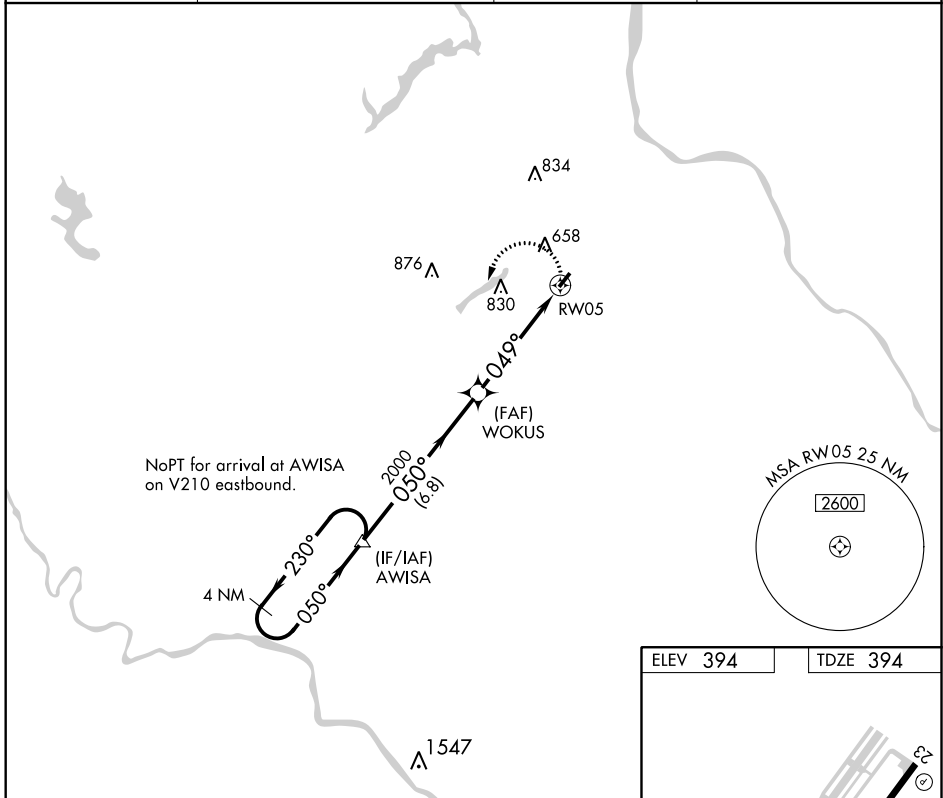
DOYLESTOWN (DYL)

APP CRS <b>049°</b>	Rwy Idg <b>3002</b>
	TDZE <b>394</b>
	Apt Elev <b>394</b>

**▼** DME/DME RNP-0.3 NA. Rwy 5: helicopter visibility reduction below  $\frac{3}{4}$  SM NA.  
**▲** When local altimeter setting not received, use Trenton altimeter setting and increase all MDA 60 feet.

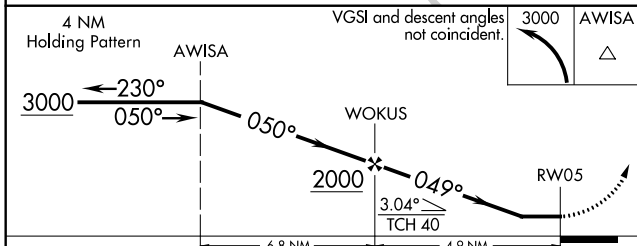
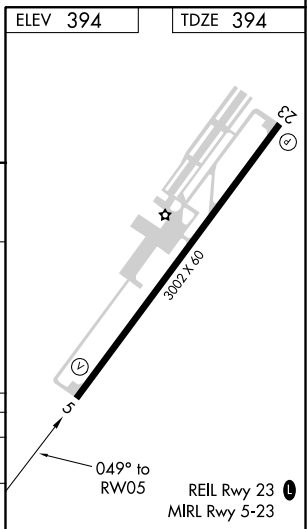
MISSED APPROACH: Climbing left turn to 3000 direct AWISA and hold.

ASOS <b>118.875</b>	PHILADELPHIA APP CON <b>123.8 291.7</b>	CLNC DEL <b>118.55</b>	UNICOM <b>122.975 (CTAF) 0</b>
------------------------	--	---------------------------	-----------------------------------



NE-4, 03 DEC 2020 to 31 DEC 2020

NE-4, 03 DEC 2020 to 31 DEC 2020



CATEGORY	A	B	C	D
LNVA MDA	880-1	486 (500-1)		NA
CIRCLING	960-1 566 (600-1)	1040-1 646 (700-1)		NA

VOR/DME SBJ <b>112.9</b> Chan <b>76</b>	APP CRS <b>240°</b>	Rwy Idg TDZE Apt Elev	<b>3002</b> <b>394</b> <b>394</b>
---	------------------------	-----------------------------	---

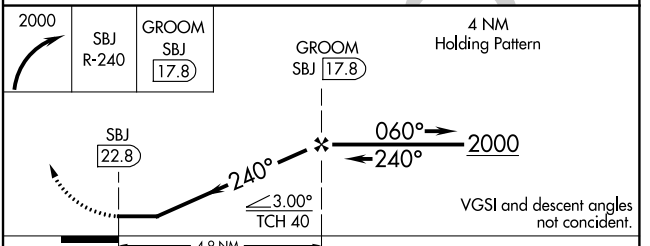
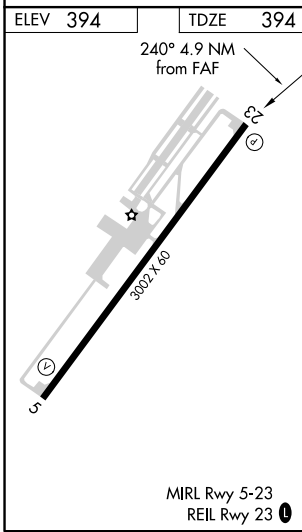
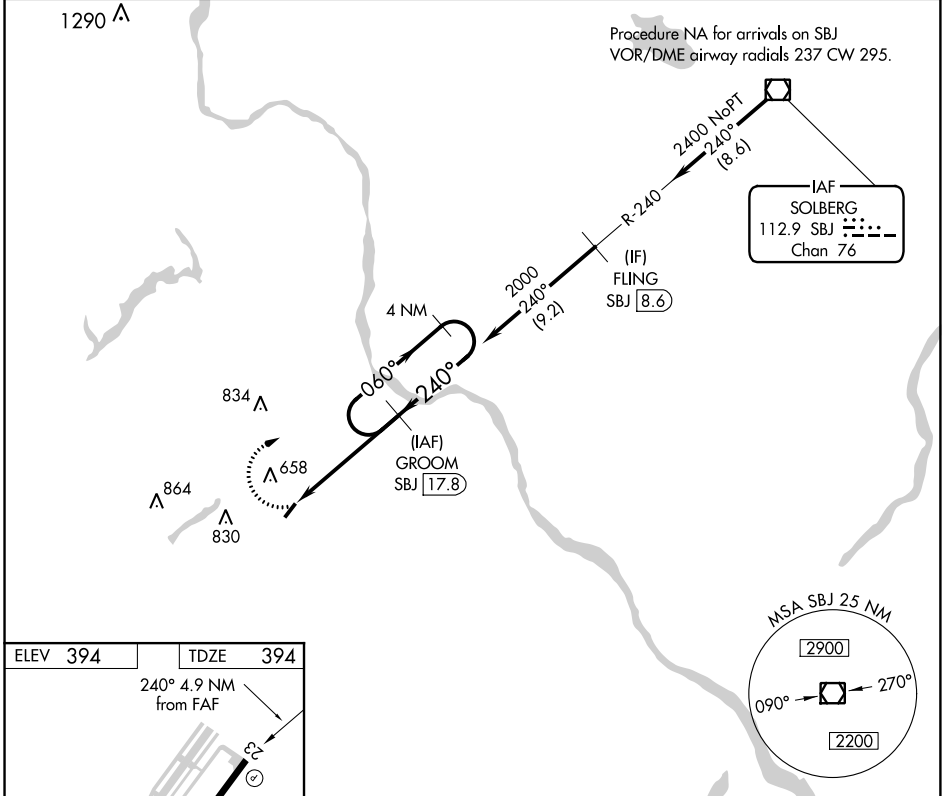
# VOR/DME RWY 23

DOYLESTOWN (DYL)

**⚠** When local altimeter setting not received, use Trenton altimeter setting and increase all MDA 60 feet and increase S-23 Cat B visibility ¼ mile. Rwy 23: helicopter visibility reduction below 1 SM NA.

**⚠** MISSED APPROACH: Climbing right turn to 2000 on SBJ R-240 to GROOM/17.8 DME and hold.

ASOS <b>118.875</b>	PHILADELPHIA APP CON <b>123.8 291.7</b>	CLNC DEL <b>118.55</b>	UNICOM <b>122.975</b> (CTAF) <b>0</b>
------------------------	--	---------------------------	--



CATEGORY	A	B	C	D
S-23	1100-1	706 (800-1)	NA	
<b>C</b> CIRCLING	1100-1 706 (800-1)	1100-1¼ 706 (800-1¼)	NA	

NE-4, 03 DEC 2020 to 31 DEC 2020

NE-4, 03 DEC 2020 to 31 DEC 2020

INSTRUMENT APPROACH PROCEDURE CHARTS

**A** IFR ALTERNATE AIRPORT MINIMUMS

Standard alternate minimums for non-precision approaches and approaches with vertical guidance [NDB, VOR, LOC, TACAN, LDA, SDF, VOR/DME, ASR, RNAV (GPS) or RNAV (RNP)] are 800-2. Standard alternate minimums for precision approaches (ILS, PAR, or GLS) are 600-2. Airports within this geographical area that require alternate minimums other than standard or alternate minimums with restrictions are listed below. NA - means alternate minimums are not authorized due to unmonitored facility, absence of weather reporting service, or lack of adequate navigation coverage. Civil pilots see FAR 91. IFR Alternate Minimums: Ceiling and Visibility Minimums not applicable to USA/USN/USAF. Pilots must review the IFR Alternate Minimums Notes for alternate airfield suitability.

NAME	ALTERNATE MINIMUMS
<b>ALLENTOWN, PA</b>	
LEHIGH VALLEY	
INTL (ABE).....	ILS or LOC Rwy 6 <sup>1</sup>
	ILS or LOC Rwy 13 <sup>2</sup>
	ILS or LOC/DME Rwy 24 <sup>1</sup>
	RNAV (GPS) Rwy 6 <sup>3</sup>
	RNAV (GPS) Rwy 13 <sup>3</sup>
	RNAV (GPS) Rwy 24 <sup>3</sup>
	RNAV (GPS) Rwy 31 <sup>3</sup>
	VOR-A <sup>3</sup>

NAME	ALTERNATE MINIMUMS
<b>BEDFORD, PA</b>	
BEDFORD	
COUNTY (HMZ).....	VOR-A <sup>2</sup>
	RNAV (GPS) Rwy 14 <sup>1</sup>

- <sup>1</sup>Categories A, B, 900-4; Category C, 1100-4; Category D, 1800-4.
- <sup>2</sup>Categories A, B, 1600-2; Category C, 1600-3; Category D, 1800-3.

**BLUEFIELD, WV**

MERCER	
COUNTY (BLF).....	ILS or LOC Rwy 23 <sup>1</sup>
	RNAV (GPS) Rwy 5 <sup>2</sup>
	RNAV (GPS) Rwy 23 <sup>3</sup>
	VOR Rwy 23 <sup>2</sup>

NA when local weather not available.

- <sup>1</sup>LOC, Category D, 800-2¼.
- <sup>2</sup>Category D, 800-2¼.
- <sup>3</sup>Category C, 800-2¼; Category D, 800-2¼.

**BRADFORD, PA**

BRADFORD	
RGNL (BFD).....	RNAV (GPS) Rwy 14
	RNAV (GPS) Rwy 32

NA when local weather not available.

**BUTLER, PA**

PITTSBURGH/BUTLER	
RGNL (BTP).....	ILS or LOC Rwy 8 <sup>1</sup>
	RNAV (GPS) Rwy 8 <sup>2</sup>
	RNAV (GPS) Rwy 26 <sup>2</sup>

- <sup>1</sup>ILS, Category C, 900-2¼; Category D, 900-2¼.
- LOC, Category C, 900-2¼; Category D, 900-2¼.
- <sup>2</sup>Category C, 900-2¼; Category D, 900-2¼.

**ALTOONA, PA**

ALTOONA-BLAIR	
COUNTY (AOO).....	ILS or LOC Rwy 21 <sup>1</sup>
	RNAV (GPS) Rwy 21 <sup>23</sup>
	RNAV (GPS) Y Rwy 3 <sup>23</sup>

- <sup>1</sup>ILS, Categories A, B, 800-2; Category C, 1300-3; Category D, 1400-3; LOC, Category C, 1300-3; Category D, 1400-3.

- <sup>2</sup>NA when local weather not available.
- <sup>3</sup>Category C, 1300-3; Category D, 1400-3.

**BEAVER FALLS, PA**

BEAVER	
COUNTY (BVI).....	LOC Rwy 10 <sup>1</sup>
	VOR Rwy 28 <sup>2</sup>

- <sup>1</sup>NA when control tower closed.
- <sup>2</sup>Categories A, B, 900-2; Categories C, D, 900-2¼.

**BECKLEY, WV**

RALEIGH COUNTY	
MEMORIAL (BKW).....	ILS or LOC Rwy 19 <sup>1</sup>
	RNAV (GPS) Rwy 1 <sup>2</sup>
	RNAV (GPS) Rwy 10 <sup>2</sup>
	RNAV (GPS) Rwy 19 <sup>2</sup>
	RNAV (GPS) Rwy 28 <sup>3</sup>
	VOR Rwy 10 <sup>2</sup>

- NA when local weather not available.
- <sup>1</sup>LOC, Category C, 900-2¼; Category D, 1000-3.
- <sup>2</sup>Category C, 900-2¼; Category D, 1000-3.
- <sup>3</sup>Categories A, B, 900-2; Category C, 900-2¼; Category D, 1000-3.

03 DEC 2020 to 31 DEC 2020

03 DEC 2020 to 31 DEC 2020

NAME ALTERNATE MINIMUMS

**CHARLESTON, WV**

YEAGER (CRW).....**ILS or LOC Rwy 5<sup>1</sup>**  
**RNAV (GPS) Y Rwy 5<sup>2</sup>**  
**RNAV (GPS) Y Rwy 23<sup>3</sup>**  
**VOR-A<sup>2</sup>**

<sup>1</sup>LOC, Category C, 900-2½; Category D, 1000-3.

<sup>2</sup>Category C, 900-2½; Category D, 1000-3.

<sup>3</sup>Category C, 900-2½; Category D, 900-2¾.

**CLARKSBURG, WV**

NORTH CENTRAL  
WEST VIRGINIA (CKB).....**ILS or LOC Rwy 21<sup>12</sup>**  
**RNAV (GPS) Rwy 3<sup>3</sup>**  
**RNAV (GPS) Rwy 21<sup>4</sup>**  
**VOR-A<sup>56</sup>**

<sup>1</sup>NA when control tower closed.

<sup>2</sup>LOC, Category B, 900-2; Categories C, D, 1100-3.

<sup>3</sup>Category B, 900-2; Categories C, D, 1100-3.

<sup>4</sup>Categories C, D, 1100-3.

<sup>5</sup>Category D, 900-2¾.

<sup>6</sup>NA when local weather not available.

**CLEARFIELD, PA**

CLEARFIELD-  
LAWRENCE (FIG).....**RNAV (GPS) Rwy 12<sup>12</sup>**  
**RNAV (GPS) Rwy 30<sup>3</sup>**

<sup>1</sup>NA when local weather not available.

<sup>2</sup>Category C, 800-2¼.

<sup>3</sup>Category D, 900-2¾.

**COATESVILLE, PA**

CHESTER COUNTY  
G O CARLSON (MQS).....**ILS or LOC Rwy 29**  
**RNAV (GPS) Rwy 11**  
**RNAV (GPS) Rwy 29**

NA when local weather not available.

**DOYLESTOWN, PA**

DOYLESTOWN (DYL).....**RNAV (GPS) Rwy 5**  
**RNAV (GPS) Rwy 23**  
**VOR/DME Rwy 23**

NA when local weather not available.

**DUBOIS, PA**

DUBOIS RGNL (DUJ).....**ILS or LOC Rwy 25**  
**RNAV (GPS) Rwy 7<sup>1</sup>**  
**RNAV (GPS) Rwy 25<sup>1</sup>**  
**VOR/DME Rwy 7**

NA when local weather not available.

<sup>1</sup>Category D, 900-2½.

NAME ALTERNATE MINIMUMS

**ELKINS, WV**

ELKINS-RANDOLPH COUNTY-JENNINGS  
RANDOLPH FIELD (EKN).....**LDA-C<sup>1</sup>**  
**RNAV (GPS) Rwy 5<sup>2</sup>**  
**RNAV (GPS) Rwy 23<sup>3</sup>**  
**RNAV (GPS)-A<sup>4</sup>**

NA when local weather not available.

<sup>1</sup>Categories A, B, 1200-2; Category C, 1800-3; Category D, 2100-3.

<sup>2</sup>Categories A, B, 1400-2; Category C, 1800-3; Category D, 2100-3.

<sup>3</sup>Categories A, B, 1200-2; Category C, 1800-3; Category D, 1200-3.

<sup>4</sup>Categories A, B, 1700-2; Category C, 1800-3.

**ERIE, PA**

ERIE INTL/TOM RIDGE  
FIELD (ERI).....**ILS or LOC Rwy 6<sup>1</sup>**  
**ILS or LOC Rwy 24<sup>1</sup>**  
**RNAV (GPS) Rwy 6**  
**RNAV (GPS) Rwy 24**

NA when local weather not available.

<sup>1</sup>NA when control tower closed.

**FRANKLIN, PA**

VENANGO  
RGNL (FKL).....**RNAV (GPS) Rwy 3**  
**VOR Rwy 21**

NA when local weather not available.

**HARRISBURG, PA**

CAPITAL CITY (CXY).....**ILS or LOC Rwy 8<sup>123</sup>**  
**RNAV (GPS) Rwy 8<sup>25</sup>**  
**RNAV (GPS) Rwy 26<sup>34</sup>**

<sup>1</sup>Categories A, 1000-2; Category B, 1400-2; Categories C, D, 1400-3.

<sup>2</sup>NA when control tower closed.

<sup>3</sup>NA when local weather not available.

<sup>4</sup>Category A, 1200-2, Category B, 1400-2; Categories C, D, 1400-3.

<sup>5</sup>Category A, 900-2; Category B, 1400-2; Categories C, D, 1400-3.

**HARRISBURG**

INTL (MDT).....**ILS or LOC Rwy 31<sup>1</sup>**  
**RNAV (GPS) Rwy 13<sup>2</sup>**  
**RNAV (GPS) Rwy 31<sup>3</sup>**  
**VOR Rwy 31<sup>2</sup>**

<sup>1</sup>LOC, Category D, 800-2¼.

<sup>2</sup>Categories A,B, 900-2; Category C, 900-2½; Category D, 900-2¾.

<sup>3</sup>Category C, 800-2¼; Category D, 800-2½.

**HAZLETON, PA**

HAZLETON RGNL (HZN).....**RNAV (GPS) Rwy 10**  
**RNAV (GPS) Rwy 28**  
Category C, 900-2½; Category D, 1000-3.

03 DEC 2020 to 31 DEC 2020

03 DEC 2020 to 31 DEC 2020

NAME ALTERNATE MINIMUMS

**HUNTINGTON, WV**

TRI-STATE/MILTON J FERGUSON  
FIELD (HTS).....**ILS or LOC Rwy 12<sup>1</sup>**  
**ILS or LOC Rwy 30<sup>1</sup>**  
**RNAV (GPS) Rwy 30<sup>2</sup>**

<sup>1</sup>LOC, Category D, 1000-3.  
<sup>2</sup>Category D, 1000-3.

**INDIANA, PA**

INDIANA COUNTY/JIMMY STEWART  
FIELD (IDI).....**RNAV (GPS) Rwy 11**  
**RNAV (GPS) Rwy 29**

NA when local weather not available.  
Categories C, D, 1300-3.

**JOHNSTOWN, PA**

JOHN MURTHA JOHNSTOWN-CAMBRIA  
COUNTY (JST).....**ILS or LOC Rwy 33<sup>123</sup>**  
**RNAV (GPS) Rwy 5<sup>4</sup>**  
**RNAV (GPS) Rwy 15<sup>4</sup>**  
**RNAV (GPS) Rwy 23<sup>4</sup>**  
**RNAV (GPS) Rwy 33<sup>4</sup>**  
**VOR Rwy 5<sup>24</sup>**  
**VOR Y Rwy 15<sup>25</sup>**  
**VOR Y Rwy 23<sup>4</sup>**  
**VOR Z Rwy 23<sup>4</sup>**

<sup>1</sup>NA when control tower closed.  
<sup>2</sup>NA when local weather not available.  
<sup>3</sup>LOC, Category D, 800-2½.  
<sup>4</sup>Category D, 800-2½.  
<sup>5</sup>Categories A, B, 1000-2;  
Categories C, D, 1000-3.

**LANCASTER, PA**

LANCASTER (LNS).....**ILS or LOC Rwy 8<sup>123</sup>**  
**RNAV (GPS) Rwy 8<sup>123</sup>**  
**RNAV (GPS) Rwy 13<sup>2</sup>**  
**RNAV (GPS) Rwy 26<sup>2</sup>**  
**RNAV (GPS) Rwy 31<sup>2</sup>**  
**VOR/DME Rwy 31<sup>24</sup>**  
**VOR/DME Rwy 8<sup>2</sup>**  
**VOR/DME Rwy 26<sup>24</sup>**  
**VOR Rwy 8<sup>25</sup>**  
**VOR Rwy 31<sup>4</sup>**

<sup>1</sup>NA when control tower closed.  
<sup>2</sup>NA when local weather not available.  
<sup>3</sup>ILS, Categories A, B, C, 700-2; Category D, 700-2½. LOC, Category D, 800-2½.  
<sup>4</sup>Category D, 800-2½.  
<sup>5</sup>Categories A, B, 1000-2; Categories C, D, 1000-3.

**LATROBE, PA**

ARNOLD PALMER  
RGNL (LBE).....**ILS or LOC Rwy 24<sup>12</sup>**  
**RNAV (GPS) Rwy 6<sup>3</sup>**  
**RNAV (GPS) Rwy 24<sup>3</sup>**

<sup>1</sup>NA when control tower closed.  
<sup>2</sup>LOC, Categories A, B, 1200-2; Categories C, D, 1200-3.  
<sup>3</sup>Category C, 900-2½; Category D, 900-2¾.

NAME ALTERNATE MINIMUMS

**LEHIGHTON, PA**

JAKE ARNER  
MEMORIAL (22N).....**RNAV (GPS) Rwy 8<sup>1</sup>**  
**RNAV (GPS) Rwy 26<sup>2</sup>**

<sup>1</sup>Categories A, B, 1100-2.  
<sup>2</sup>Categories A, B, 1000-2.

**LEWISBURG, WV**

GREENBRIER  
VALLEY (LWB).....**ILS or LOC Rwy 4<sup>12</sup>**  
**RNAV (GPS) Rwy 4<sup>13</sup>**  
**RNAV (GPS) Rwy 22<sup>4</sup>**

<sup>1</sup>NA when local weather not available.  
<sup>2</sup>LOC, Category C, 1000-3; Category D, 1400-3.  
<sup>3</sup>Category C, 1000-3; Category D, 1400-3.  
<sup>4</sup>Category C, 1000-3; Category D, 1300-3.

**LOGAN, WV**

LOGAN  
COUNTY (6L4).....**RNAV (GPS) Rwy 6<sup>1</sup>**  
**RNAV (GPS) Rwy 24**

Category C, 1100-3.  
<sup>1</sup>NA when local weather not available.

**MARTINSBURG, WV**

EASTERN WV RGNL/SHEPHERD  
FIELD (MRB).....**ILS or LOC Rwy 26<sup>12</sup>**  
**RNAV (GPS) Rwy 8<sup>3</sup>**  
**RNAV (GPS) Rwy 26<sup>14</sup>**  
**VOR-A<sup>13</sup>**

<sup>1</sup>NA when local weather not available.  
<sup>2</sup>ILS, LOC, Category D, 900-2¾;  
Category E, 1600-3.  
<sup>3</sup>Category D, 800-2½; Category E, 1600-3.  
<sup>4</sup>Category D, 900-2¾; Category E, 1600-3.

**MEADVILLE, PA**

PORT MEADVILLE (GKJ).....**LOC Rwy 25<sup>1</sup>**  
**RNAV (GPS) Rwy 7**  
**RNAV (GPS) Rwy 25**

Category B, 900-2; Category C, 900-2½;  
Category D, 900-2¾.  
<sup>1</sup>NA when local weather not available.

**MORGANTOWN, WV**

MORGANTOWN MUNI-WALTER L BILL  
HART FIELD (MGW).....**ILS or LOC Rwy 18<sup>12</sup>**  
**RNAV (GPS) Y Rwy 18<sup>34</sup>**  
**RNAV (GPS) Z Rwy 18<sup>34</sup>**  
**RNAV (GPS) Rwy 36<sup>4</sup>**

<sup>1</sup>NA when control tower closed.  
<sup>2</sup>LOC, Category C, 1000-2¾; Category D, 1400-3.  
<sup>3</sup>NA when local weather not available.  
<sup>4</sup>Category C, 1000-2¾; Category D, 1400-3.

20310

NAME ALTERNATE MINIMUMS

**MOUNT POCONO, PA**

POCONO MOUNTAINS  
MUNI (MPO).....RNAV (GPS) Rwy 5  
RNAV (GPS) Rwy 13  
RNAV (GPS) Rwy 31  
VOR/DME Rwy 13

NA when local weather not available.  
Category D, 800-2½.

**MUIR AAF (MUI)**

FORT INDIANTOWN GAP, PA.....NDB-A<sup>1</sup>  
RNAV (GPS)-B<sup>23</sup>  
COPTER NDB Y-289<sup>1</sup>  
COPTER NDB Z-289<sup>1</sup>  
COPTER RNAV (GPS) Rwy 25<sup>1</sup>

<sup>1</sup>NA when control tower closed.  
<sup>2</sup>NA when local weather not available.  
<sup>3</sup>Categories A, B, 1000-2; Category C, 1000-2¾.

**PARKERSBURG, WV**

MID-OHIO VALLEY  
RGNL (PKB).....RNAV (GPS) Rwy 3  
RNAV (GPS) Rwy 10  
RNAV (GPS) Rwy 21  
RNAV (GPS) Rwy 28

NA when local weather not available.

**PHILADELPHIA, PA**

NORTHEAST  
PHILADELPHIA (PNE).....ILS or LOC Rwy 24<sup>12</sup>  
LOC BC Rwy 6<sup>1</sup>  
RNAV (GPS) Rwy 6  
RNAV (GPS) Rwy 15  
RNAV (GPS) Rwy 24<sup>1</sup>  
RNAV (GPS) Rwy 33

NA when local weather not available.  
<sup>1</sup>NA when control tower closed.  
<sup>2</sup>ILS, Category D, 700-2.

PHILADELPHIA

INTL (PHL).....ILS or LOC Rwy 9L<sup>1</sup>  
ILS Z or LOC Z Rwy 9R<sup>2</sup>  
ILS Z or LOC Rwy 17<sup>3</sup>  
ILS or LOC Rwy 26<sup>3</sup>  
ILS or LOC Rwy 27L<sup>46</sup>  
RNAV (GPS) Rwy 27L<sup>5</sup>  
RNAV (GPS) Rwy 27R<sup>5</sup>  
RNAV (GPS) Rwy 35<sup>56</sup>  
RNAV (GPS) Y Rwy 9R<sup>5</sup>

<sup>1</sup>ILS, Categories A, B, 800-2; Category C, 800-2½; Category D, 800-2½. LOC, Category C, 800-2½; Category D, 800-2½.  
<sup>2</sup>ILS, Categories A, B, C, 800-2; Category D, 800-2½. LOC, Category D, 800-2½.  
<sup>3</sup>ILS, Categories A, B, C, 700-2.  
<sup>4</sup>LOC, Category D, 800-2½.  
<sup>5</sup>Category D, 800-2½.  
<sup>6</sup>NA when local weather not available.

NAME ALTERNATE MINIMUMS

**PHILADELPHIA, PA (CON'T)**

WINGS FIELD (LOM).....RNAV (GPS) Rwy 6  
RNAV (GPS) Rwy 24  
NA when local weather not available.

**PITTSBURGH, PA**

ALLEGHENY  
COUNTY (AGC).....ILS or LOC Rwy 10  
ILS, Category C, 800-2; Category D, 800-2½. LOC, Category D, 800-2½.

PITTSBURGH

INTL (PIT).....ILS or LOC Rwy 10L<sup>1</sup>  
ILS or LOC Rwy 10R<sup>2</sup>  
ILS or LOC Rwy 28L<sup>1</sup>  
ILS or LOC Rwy 28R<sup>1</sup>  
ILS or LOC Rwy 32<sup>1</sup>  
RNAV (GPS) Rwy 10L<sup>3</sup>  
RNAV (GPS) Rwy 14<sup>3</sup>  
RNAV (GPS) Y Rwy 10C<sup>3</sup>  
RNAV (GPS) Y Rwy 10R<sup>3</sup>  
RNAV (GPS) Y Rwy 28C<sup>3</sup>  
RNAV (GPS) Y Rwy 28L<sup>3</sup>  
RNAV (GPS) Y Rwy 28R<sup>3</sup>  
RNAV (GPS) Y Rwy 32<sup>3</sup>

<sup>1</sup>LOC, Category D, 800-2½, Category E, 800-2½.  
<sup>2</sup>ILS, Category C, 700-2; Category D, 700-2½.  
Category E, 700-2½. LOC, Category D, 800-2½, Category E, 800-2½.  
<sup>3</sup>Category D, 800-2½.

**POINT PLEASANT, WV**

MASON COUNTY (3I2).....RNAV (GPS) Rwy 7<sup>1</sup>  
RNAV (GPS) Rwy 25<sup>2</sup>

NA when local weather not available.  
<sup>1</sup>Categories A, B, 1300-2; Category C, D, 1300-3.  
<sup>2</sup>Category A, B, 1100-2; Category C, D, 1100-3.

**POTTSTOWN, PA**

HERITAGE FIELD (PTW).....LOC Rwy 28  
RNAV (GPS)-A  
RNAV (GPS) Rwy 28  
VOR/DME-A

NA when local weather not available.

**QUAKERTOWN, PA**

QUAKERTOWN (UKT).....RNAV (GPS) Rwy 11  
RNAV (GPS) Rwy 29

NA when local weather not available.

03 DEC 2020 to 31 DEC 2020

03 DEC 2020 to 31 DEC 2020

20310

M4

20310

NAME ALTERNATE MINIMUMS

**READING, PA**

READING RGNL/CARL A.  
SPAATZ FIELD (RDG).....**ILS or LOC Rwy 13<sup>13</sup>**  
**ILS or LOC Rwy 36<sup>13</sup>**  
**RNAV (GPS) Rwy 13<sup>2</sup>**  
**RNAV (GPS) Rwy 18<sup>2</sup>**  
**RNAV (GPS) Rwy 36<sup>2</sup>**

NA when local weather not available.  
<sup>1</sup>ILS, Categories A, B, C, 700-2; Category D, 800-2½. LOC, Category D, 800-2½.  
<sup>2</sup>Category D, 800-2½.  
<sup>3</sup>NA when control tower closed.

**ST MARYS, PA**

ST MARYS  
MUNI (OYM).....**RNAV (GPS) Rwy 10**  
NA when local weather not available.  
Category D, 900-2¼.

**SELINGROVE, PA**

PENN VALLEY (SEG).....**RNAV (GPS) Rwy 17<sup>1</sup>**  
**RNAV (GPS) Rwy 35<sup>2</sup>**  
**VOR-A<sup>3</sup>**

<sup>1</sup>Categories A, B, 1000-2; Category C, 1000-3; Category D, 1200-3.  
<sup>2</sup>Categories A, B, 1400-2; Categories C, D, 1400-3.  
<sup>3</sup>Categories A, B, 1000-2.

**SOMERSET, PA**

SOMERSET COUNTY (2G9).....**LOC Rwy 25**  
Categories C, D, 1300-3.

**STATE COLLEGE, PA**

UNIVERSITY  
PARK (UNV).....**ILS or LOC Rwy 24<sup>1</sup>**  
**RNAV (GPS) Rwy 6<sup>2</sup>**  
**RNAV (GPS) Rwy 24<sup>2</sup>**

<sup>1</sup>ILS, Category C, 800-2; Category D, 1400-3; LOC, Category D, 1400-3.  
<sup>2</sup>Category D, 1400-3.

**WASHINGTON, PA**

WASHINGTON  
COUNTY (AFJ).....**ILS OR LOC Rwy 27<sup>3</sup>**  
**RNAV (GPS) Rwy 9<sup>1</sup>**  
**RNAV (GPS) Rwy 27<sup>2</sup>**

NA when local weather not available.  
<sup>1</sup>Category D, 900-2¼.  
<sup>2</sup>Category C, 800-2½, Category D, 900-2¼.  
<sup>3</sup>ILS, Categories A, B, 800-2; Category C, 800-2½; Category D, 900-2¼. LOC, Category C, 800-2½; Category D 900-2¼.

NAME ALTERNATE MINIMUMS

**WELLSBORO, PA**

WELLSBORO  
JOHNSTON (N38).....**RNAV (GPS) Rwy 10<sup>1</sup>**  
**RNAV (GPS) Rwy 28<sup>2</sup>**  
**VOR-A<sup>34</sup>**

<sup>1</sup>Categories A, B, 900-2; Category C, 900-2½.  
<sup>2</sup>Category C, 900-2½.  
<sup>3</sup>Categories A, B, 1100-2; Category C, 1100-3.  
<sup>4</sup>NA when local weather not available.

**WHEELING, WV**

WHEELING OHIO  
COUNTY (HLG).....**ILS or LOC Rwy 3<sup>1</sup>**  
**RNAV (GPS) Rwy 3<sup>23</sup>**  
**RNAV (GPS) Rwy 16<sup>23</sup>**  
**RNAV (GPS) Rwy 21<sup>2</sup>**  
**RNAV (GPS) Rwy 34<sup>2</sup>**  
**VOR Rwy 21<sup>23</sup>**

<sup>1</sup>ILS, Categories A, B, 700-2; Category C, 800-2; Category D, 800-2¼; LOC, Category D, 800-2¼.  
<sup>2</sup>Category D, 800-2¼.  
<sup>3</sup>NA when local weather not available.

**WILKES-BARRE/SCRANTON, PA**

WILKES-BARRE/SCRANTON  
INTL (AVP).....**ILS or LOC Rwy 4<sup>1</sup>**  
**ILS or LOC Rwy 22<sup>2</sup>**  
**RNAV (GPS) Rwy 4<sup>2</sup>**  
**RNAV (GPS) Rwy 22<sup>3</sup>**

<sup>1</sup>ILS, LOC, Category A, 900-2; Category B, 1100-2; Category C, 1100-3; Category D, 1400-3.  
<sup>2</sup>LOC, Category A, 900-2; Category B, 1100-2; Category C, 1100-3; Category D, 1400-3.  
<sup>3</sup>Category A, 900-2; Category B, 1100-2; Category C, 1100-3; Category D, 1400-3.

**WILLIAMSPORT, PA**

WILLIAMSPORT  
RGNL (IPT).....**ILS or LOC Rwy 27<sup>12</sup>**  
**RNAV (GPS) Rwy 9<sup>3</sup>**  
**RNAV (GPS) Rwy 12<sup>4</sup>**  
**RNAV (GPS) Rwy 27<sup>5</sup>**  
**RNAV (GPS) Rwy 30<sup>6</sup>**

<sup>1</sup>NA when local control tower closed.  
<sup>2</sup>ILS, LOC, Categories A, B, 1000-2; Category C, 1400-3; Category D, 1600-3.  
<sup>3</sup>Categories A, B, 1600-2; Category C, 1600-3.  
<sup>4</sup>Category A, 900-2; Category B, 1000-2.  
<sup>5</sup>Categories A, B, 1800-2; Categories C, D, 1800-3;  
<sup>6</sup>Categories A, B, 1500-2.

**YORK, PA**

YORK (THV).....**RNAV (GPS) Rwy 17**  
**RNAV (GPS) Rwy 35**  
Category C, 800-2¼; Category D, 800-2½.

03 DEC 2020 to 31 DEC 2020

03 DEC 2020 to 31 DEC 2020

20310